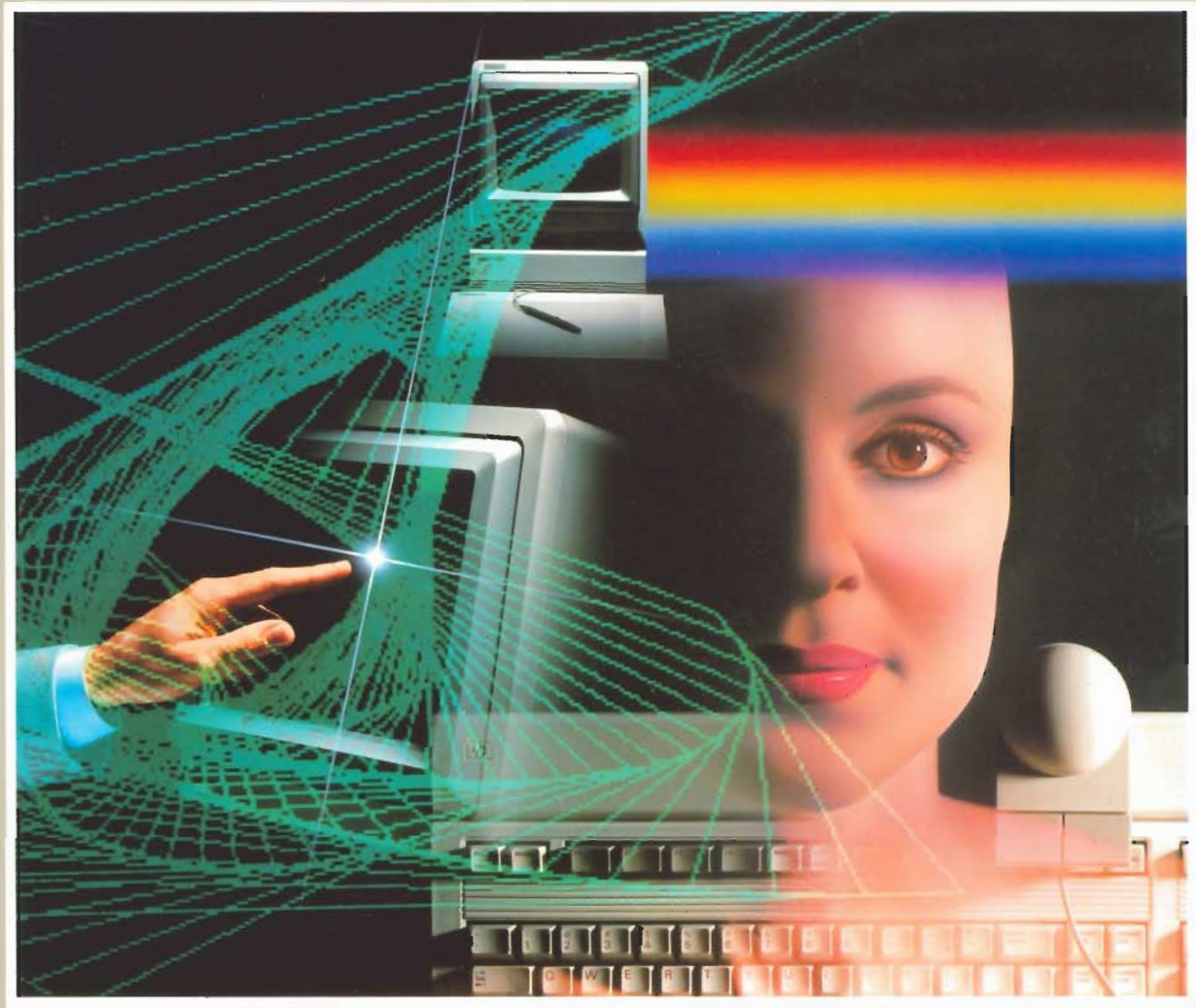


HEWLETT-PACKARD

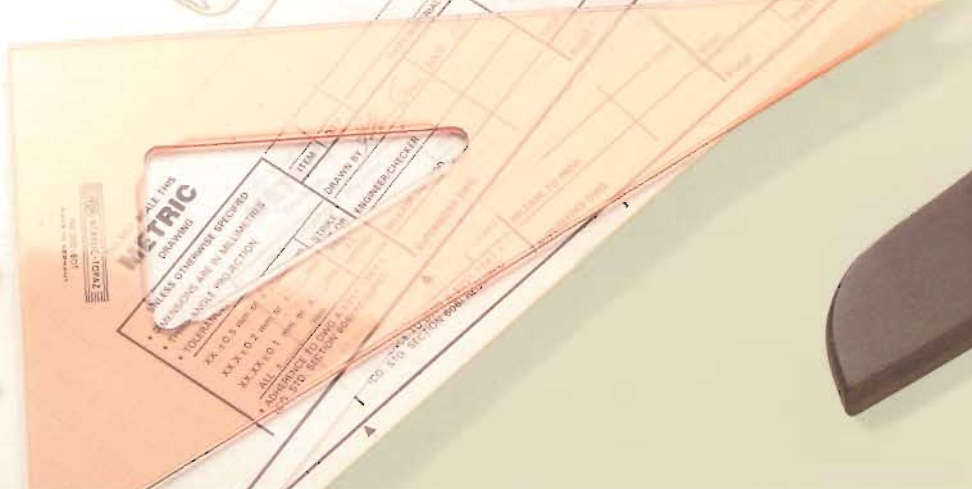
TERMINALS ■ MONITORS ■ ACCESSORIES



Created with You in Mind

HP Computer Museum
www.hpmuseum.net

For research and education purposes only.





To the people who spend the major part of their day in front of one, the terminal is the system. Naturally then, your terminal should provide a comfortable, friendly interface with the computer.

At Hewlett-Packard, we've designed our terminals, display monitors and accessories to work closely with you. Ergonomic features—well-defined characters, integral tilt and swivel, functional keyboard layouts—add to your comfort and increase your productivity.

Take a close look at our family of products. You can see why Hewlett-Packard is first choice for display products.



HP 2392A Display Terminal



The HP 2392A is a compact, low cost, block mode terminal designed for a wide range of applications—from data entry to program development. Features like integral tilt and swivel, 12-inch diagonal anti-glare screen, and a low-profile, adjustable keyboard help make your work more pleasant. With smooth scrolling, you can easily view up to 4 pages of text or data (up to 8 pages optional).

Screen menus containing user-selected or default settings simplify configuring the terminal. And the 2392A's eight screen-labeled function keys let you operate the terminal without having to learn any complex commands. You can also define the eight function keys for your own applications. Your definitions aren't lost when the terminal is turned off, since the settings are saved in nonvolatile memory.

Centronics is a registered trademark of Centronics Data Computer Corporation.

DEC is a registered trademark of Digital Equipment Corporation.

HP 2394A Data Entry Terminal



Data entry applications are made easier using forms mode and the standard line drawing set to emulate existing paper forms. High speed datacomm (up to 19,200 bits per second) shortens response time.

It is also easy for you to generate hardcopy, since the 2392A has an optional user-installable printer port. Choose between an RS232C serial or a Centronics®-type parallel interface module.

Besides being compatible with HP computers and software, the 2392A has a no-cost ANSI (American National Standards Institute) option so it can communicate with ANSI "speaking" computer systems too—like DEC® computers.

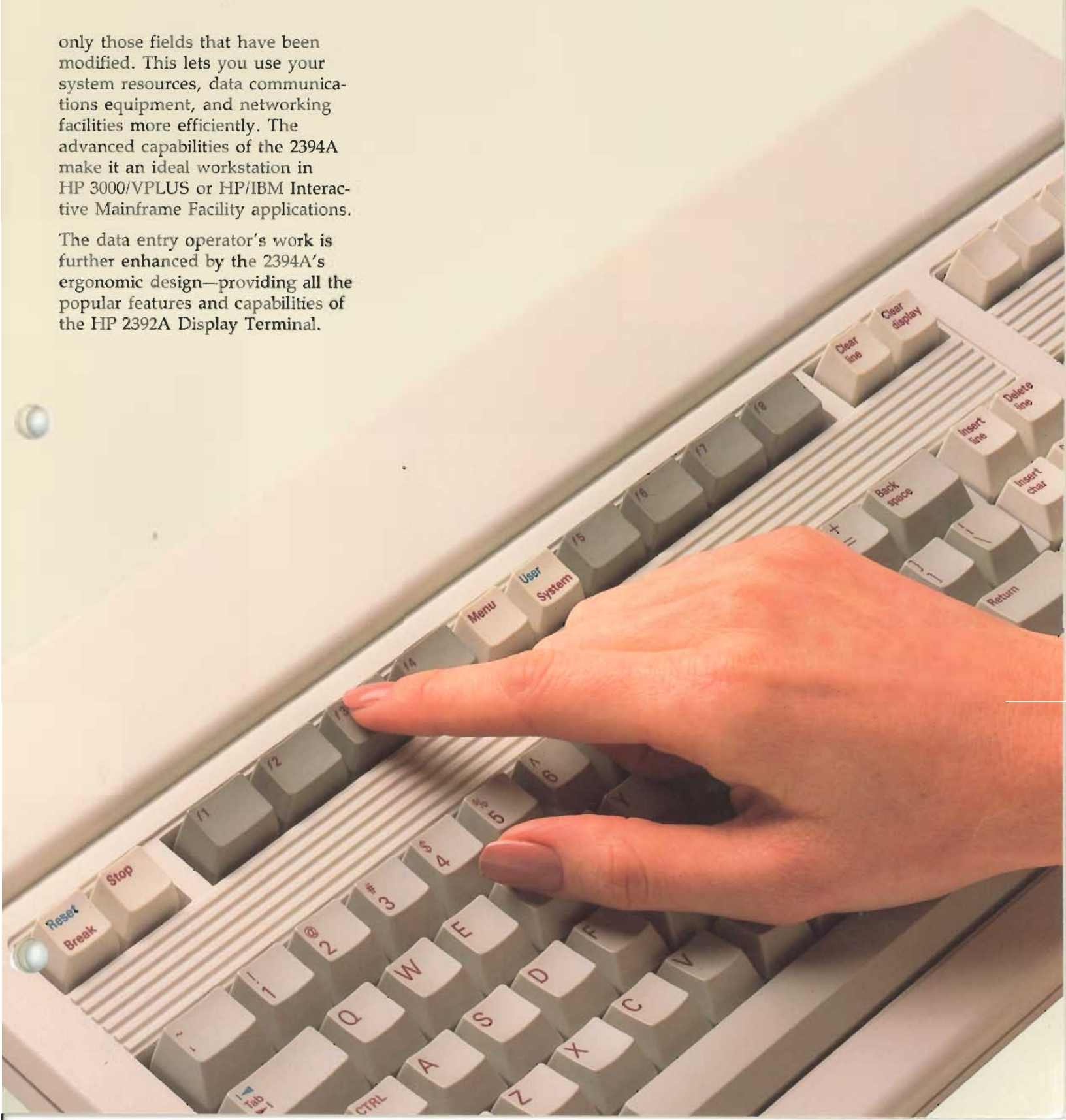
Traditional data entry applications involve repeated downloading of forms from the computer for data input. The HP 2394A Data Entry Terminal, however, offers a more innovative approach.

The 2394A stores forms locally in the terminal's memory to be displayed quickly—without system downloading. Local edit checks on the 2394A let you know immediately when an error is made, so you don't send mistakes to the system. And the 2394A's modified data tag feature reduces data communication traffic, transmitting to the system



only those fields that have been modified. This lets you use your system resources, data communications equipment, and networking facilities more efficiently. The advanced capabilities of the 2394A make it an ideal workstation in HP 3000/VPLUS or HP/IBM Interactive Mainframe Facility applications.

The data entry operator's work is further enhanced by the 2394A's ergonomic design—providing all the popular features and capabilities of the HP 2392A Display Terminal.



HP 2393A Graphics Terminal



The HP 2393A combines bit-mapped vector graphics on a monochrome raster display with comprehensive alphanumeric capabilities. You'll find it a versatile terminal in many applications.

The 2393A's unique HP-HIL (Human Interface Link) interface lets you connect multiple input devices—like HP Touch, Mouse, Graphics Tablet and Bar Code Reader. And with dual-mode resolution, you can choose either 512×390 or 640×400 for formatting screen graphics. You can take advantage of the many graphics primitives offered by the 2393A, including rubberband line for previewing lines before they are drawn, and polygonal area fill in your choice of patterns.

Precision Visuals, DI-3000 and GRAFMAKER are trademarks of Precision Visuals, Inc.

ISSCO, DISSPLA and TELL-A-GRAF are registered trademarks of Integrated Software Systems Corporation.

SAS/GRAPH is a trademark of SAS Institute, Inc.

PLOT 10 and TEKTRONIX are registered trademarks of Tektronix Inc.

TEMPLATE is a registered trademark of Megatek Corporation

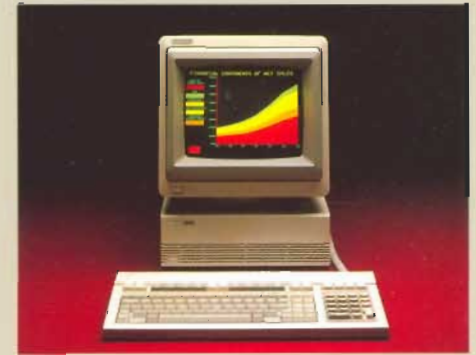
The 2393A also offers a range of output options, so you can connect it to printers, plotters, film recorders and large screen projectors.

Software support for the 2393A includes popular HP packages like DSG/3000, HP DRAW, HP EASYCHART, HP MAP, Graphics 1000/II and Graphics 9000. In addition, you can use the 2393A with many third-party software packages, including Precision Visuals™, DI-3000™ and GRAFMAKER™, ISSCO®'s DISSPLA® and TELL-A-GRAF®, SAS Institute's SAS/GRAPH™, TEMPLATE® from Megatek. The 2393A has ANSI X3.64 and TEKTRONIX® 4010/4014 compatibility too, so you can use it on a variety of computer systems.

In addition to full graphics, the 2393A has extensive alphanumeric features, such as: 12 pages of display memory; smooth vertical scrolling and horizontal scrolling for text up to 160 columns wide; math, line-drawing, bold and italic character sets.

The HP 2393A is one of the most flexible graphics terminals in its class, providing quality and reliability at a surprisingly affordable price.

HP 2397A Color Graphics Terminal



The HP 2397A offers a high quality color raster display with fast vector graphics. With all the new features and software support of the 2393A monochrome graphics terminal, the 2397A is ideally suited for both business and technical applications.

Eight basic colors can be displayed from a palette of 64 (more using dithering patterns), making user-defined colors easily accessible, including those that match HP plotter pens.

With polyline vectors and local polygonal area fill, you can create shapes, symbols and typefaces quickly and easily.

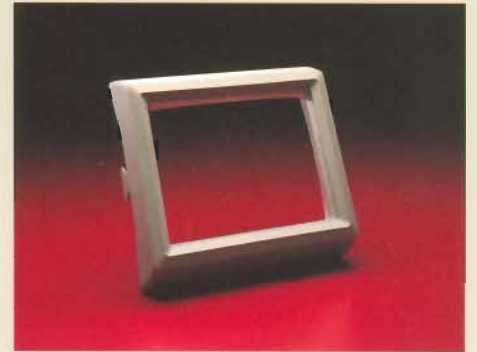
The 2397A also provides color alphanumerics. Up to eight color pairs (foreground/background) can be used on a per character basis to differentiate text and identify critical fields.

Also, the HP 2397A has the same extensive software support as the HP 2393A Monochrome Graphics Terminal.

You can choose from a variety of output devices for the 2397A. These include printers, plotters, large screen projectors, monitors and film recorders.



35723A
HP Touch Accessory



The 35723A HP Touch Accessory is a 12-inch, user-installable touchscreen bezel. When you add HP touch to your HP computer or terminal that supports the HP-HIL (Human Interface Link), you transform your ordinary screen into an interactive touchscreen. HP Touch gives you an easy and natural way of communicating with your computer.

HP Touch has a maximum resolution of 43 vertical by 57 horizontal, giving you 2451 touch points. You can define touch areas of varying shapes and sizes, giving you programming flexibility for a wide range of applications.

**35731
HP Monochrome Monitor**



The 35731 HP Monochrome Monitor is a 12-inch, high resolution monochrome video display unit used as an integral component of HP terminals, PCs and workstations.

The monitor features an easy-to-read green phosphor display, as well as compatibility with HP systems that use 512×390 or 640×400 resolutions. It supports the HP Touch Accessory via the HP-HIL interface.

Ergonomic features on the monitor include an anti-glare screen and built-in tilt and swivel for adjusting the screen viewing angle. The monitor also has front panel brightness and contrast controls to make display adjustments more convenient for you.

**35741
HP Color Monitor**



The 35741 HP Color Monitor provides a 12-inch RGB analog color video display with a 640×400 resolution (the actual image produced on the screen depends on the resolution of the computer system driving it). Like the 37531 Monochrome Monitor, the color monitor is used with many HP computer systems, terminals, PC's and workstations.

The color monitor features RGB P22 color phosphor, with analog video inputs capable of providing a continuous spectrum of colors. The HP-HIL interface provides support for the HP Touch Accessory.

With convenient front panel brightness and contrast controls, non-glare screen and integrated tilt and swivel, the color monitor offers state-of-the-art ergonomics. And its 0.31 mm dot pitch and excellent convergence allows you to display clean, sharp on-screen images in both graphics and alphanumeric.

**45850A
HP Touchscreen II
Terminal**



The 45850A HP Touchscreen II Terminal has built-in multi-function capabilities that allow it to be used with a host computer for word processing and graphics applications. In addition, the Touchscreen II can be used as a personal computer when you add a disk drive and appropriate software.

The ergonomic design of the Touchscreen II includes a 12-inch display, integrated tilt, smooth vertical scrolling, optional touchscreen capability, and a detached keyboard. A cable cover hides terminal cables from view, giving your desk a tidy appearance. The Touchscreen II terminal even has an onscreen time-of-day clock.

With the full range of input and output devices supported by the Touchscreen II, you can choose the ones that are most convenient for your applications. Furthermore, four accessory slots in the terminal allow expansion for accessories like an integral modem card.

HP 3081A Industrial Workstation Terminal

Bar Code Reader

Mouse

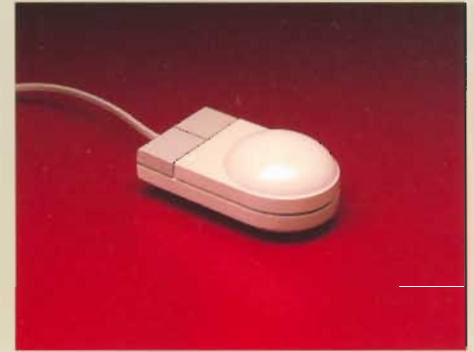


The 3081A is a compact terminal designed especially for data collection applications in factory environments. Its rugged plastic casing allows it to operate in many harsh environments.

You can connect the 3081A to a host system via an HP 92922A four-channel RS232C Adapter for point-to-point applications. The 92922A provides power and current loop to RS232C conversion for up to four 3081A terminals. You can also use a bar code reader as an input device on the 3081A.

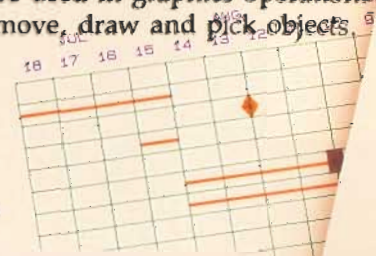


The bar code reader provides display terminal users with an alternative to the keyboard for data entry applications. It speeds up data entry and greatly improves accuracy. This makes it ideal for order entry applications, document tracking or material flow.

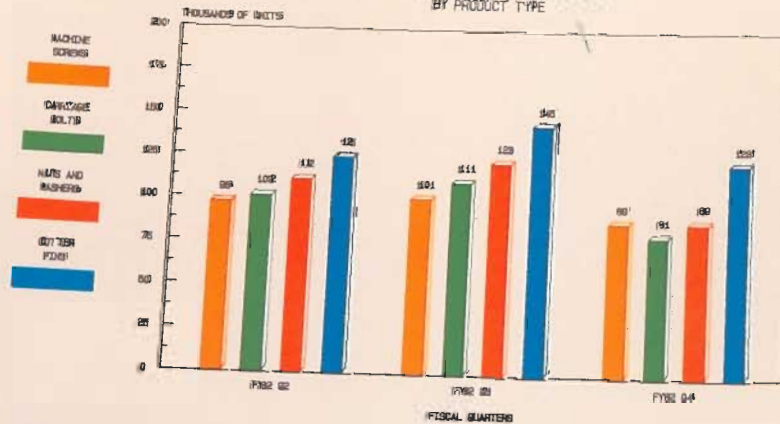


The HP Mouse simplifies the task of positioning the cursor on your display. It provides the same functions as cursor movement keys on the keyboard, but is faster and more convenient to use. As a handheld "pointing" device, the Mouse couples the motion of your hand to the movement of the cursor. It can be used in graphics operations to move, draw and pick objects.

TASK NO.	ITEM DESCRIPTION
***	IDENTIFY
1	DEFINE PRELIM. CONTENT
2	NOTIFY MARKETING
3	SELECT TEAM
***	DEVELOP
4	DEVELOP CONTENT/MEDIA SCRIPT



GROWTH PROJECTIONS
BY PRODUCT TYPE



Plotters

Printers

Terminals, Monitors and Accessories Created with You in Mind

- Please have an HP Sales Representative call. My phone number is ()
- Please send more information on the following terminals.
 - HP 2392A Display Terminal
 - HP 2394A Data Entry Terminal
 - HP 2393A Graphics Terminal
 - HP 2397A Color Graphics Terminal
 - 35723A HP Touch Accessory
 - 35731 HP Monochrome Monitor
 - 35741 HP Color Monitor
 - HP 45850A Touchscreen II Terminal
 - HP 3081A Industrial Workstation Terminal



HP plotters provide high quality, high resolution graphics hardcopy, making them ideal companions to HP graphics terminals. HP offers a range of plotters to meet every application from overhead transparencies for business presentation to complex drawings for engineering documentation.

HP printers, together with terminals, provide the most affordable way to get a hardcopy of text and graphics. HP's line of printers includes the Thinkjet for the cost-conscious user to the fast letter quality

Name _____

Job Title _____

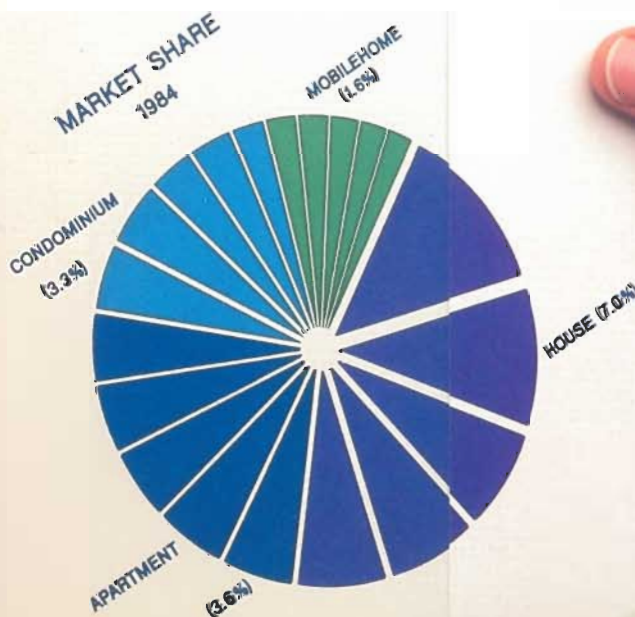
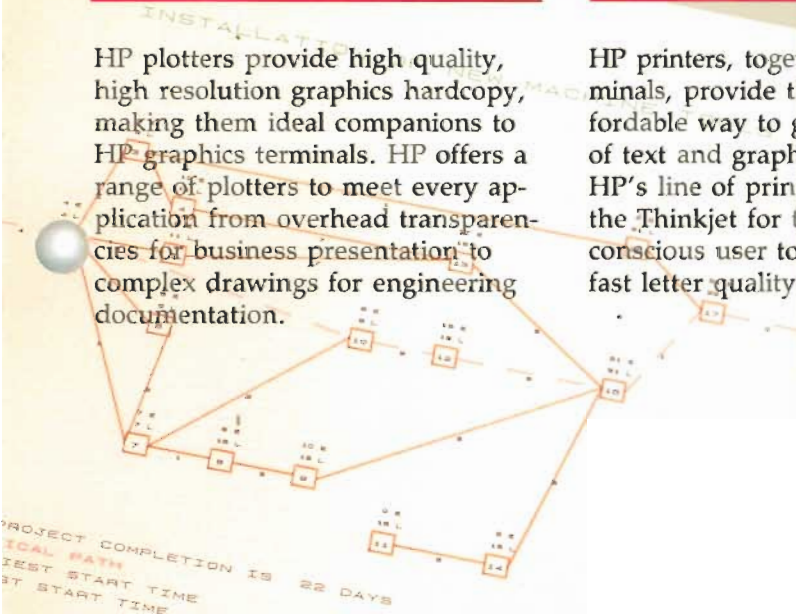
Company Name _____

Address _____

City _____

State _____

Zip _____



Features*	Alphanumeric		Graphics		Personal Computer
	2392A Display Terminal	2394A Data Entry Terminal	2393A Graphics Terminal	2397A Color Graphics Terminal	Touchscreen II Terminal
Display					
Size	12"	12"	12"	12"	12"
Format					
Columns	80	80	80-160	80-160	80
Lines	24	24	24	24	24
Softkey Labeling	25th, 26th	25th, 26th	25th, 26th	25th, 26th	25th, 26th
Status Line	Yes	Yes	Yes	Yes	Yes
Character Cell	9 x 14	9 x 14	8 x 14	8 x 14	8 x 14
Video Attributes ¹	UL,IV,B,HB,SV	UL,IV,B,HB,SV	UL,IV,B,HB,SV,DH,DW	UL,IV,B,HB2,DH,DW	UL,IV,B,HB,SV
Phosphor	G	G	G	Color	G
Graphics Resolution	—	—	512 x 390/640 x 400	512 x 390/640 x 400	512 x 390
Memory	Up to 4 pgs std Up to 8 pgs opt	Up to 8 pgs std	Up to 12 pgs std	Up to 12 pgs std	2 pgs
Field Attributes ²	P,UNP	P,UNP,T-O	P,UNP,T-O	P,UNP,T-O	P,UNP,T-O
Modify Data Tag	No	Yes	Yes	Yes	Yes
Smooth Scroll	Yes	Yes	Yes	Yes	Yes
Data Edit Checks	None	11 Checks	3 Checks	3 Checks	3 Checks
Keyboard					
Typewriter	Yes	Yes	Yes	Yes	Yes
Detached/Adjustable	Yes/Yes	Yes/Yes	Yes/Yes	Yes/Yes	Yes/Yes
Numeric Pad	Std	Std	Std	Std	Std
Cursor Keys	Yes	Yes	Yes	Yes	Yes
Editing Keys ³	IC,DC,IL,DL	IC,DC,IL,DL	IC,DC,IL,DL	IC,DC,IL,DL	IC,DC,IL,DL
Non-Volatile					
Softkeys	8	8	4	4	No
Data Communications					
Mode					
Character/Line	Yes	Yes	Yes	Yes	Yes
Block	Yes	Yes	Yes	Yes	Yes
Speed ⁴	110-19.2K Baud	110-19.2K Baud	110-19.2K Baud	110-19.2K Baud	110-19.2K Baud
Interface					
RS232	Std	Std	Std	Std	Std
RS422	Std	Std	Std	Std	Std
Current Loop	Opt	Opt	Opt	Opt	No
Video Output	No	No	Composite	RGB/Composite	No
Protocol-Enq/Ack					
XON/XOFF	Yes	Yes	Yes	Yes	Yes
Other Capabilities					
Forms Cache	No	Yes	No	No	No
ANSI Compatible	Yes	Yes	Yes	Yes	P.C. Config. †
IBM Compatible	No	No	No	No	P.C. Config. †
Tektronix Compatible	No	No	4010/4014	4010/4014	No
HPWord Support	No	No	No	No	Yes
Input Devices ⁵	B	B	B,M,T,TS	B,M,T,TS	B,TS
Character Sets					
Line Drawing	Std	Std	Std	Std	Std
Other ⁶	No	No	M,B,I	M,B,I	M
National Languages	Std	Std	Std	Std	Std
Hardcopy					
Printer Ports					
RS232	Opt	Opt	Opt	Opt	Std
HPiB	No	No	Opt	Opt	Std
Centronics	Opt	Opt	Opt	Opt	P.C. Config. †

* Features are subject to change without notice. For further details, refer to respective data sheet.

† When the Touchscreen II is configured as a Personal Computer the feature is available as a software package or hardware accessory

¹ UL=Underline; IV=Inverse Video; B=Blinking; HB=Halfbright; HB2=Halfbright Maps to Color Pair; SV=Security Video; DH=Double High; DW=Double Wide

² P=Protected; UNP=Unprotected; T-O=Transmit Only

³ IC=Insert Character; DC=Delete Character; IL=Insert Line; DL=Delete Line

⁴ Above 4800 may require handshaking

⁵ TS=Touch Screen; B=Barcode; M=Mouse; T=Tablet

⁶ M=Math; B=Bold; I=Italics

Corporate Headquarters:
Hewlett-Packard
3000 Hanover Street
Palo Alto, CA 94304 USA

European Headquarters:
Hewlett-Packard S.A.
7 rue du Bois-du-Lan
P.O. Box
CH-1217 MEYRIN 2
Geneva, Switzerland

International Headquarters:
Hewlett-Packard
3495 Deer Creek Rd.
Palo Alto, CA 94304 USA

