

---

# Setting You Free with AdvanceLink



*This manual has been written for  
use with your HP Touchscreen  
Personal Computer.*

**Manual Part No.  
45431-90004**

# Welcome to AdvanceLink

This book, *Setting You Free with AdvanceLink*, outlines some of the ways you can use AdvanceLink and shows you, step by step, three ways this powerful package can increase the communications flexibility of your HP Touchscreen Personal Computer.

AdvanceLink is a communications package—with several separate programs—that allows your Touchscreen PC to communicate with almost any computer, anywhere:

- with another personal computer like a second Touchscreen or an IBM PC™
- with a larger computer like an HP 3000, an HP 1000, or a computer made by VAX, IBM, or AMDAHL
- with the computer system of a public information service like CompuServe™, The Source™, or Dow Jones™ Information Service.

When you have taken a look at the components of AdvanceLink and performed the practice exercises in this book, you will understand the essential features of this communications package.

Then you will find that two other publications will help you explore the many capabilities of AdvanceLink:

- *Using AdvanceLink* is a reference guide to the programs, the commands, and the numerous functions of AdvanceLink.
- *The Quick Reference Guide* is a handy pocket guide to the commands and configurations you will use as you communicate with other computers.

There are three main programs on your discs that constitute the complete communications package of AdvanceLink:

- AdvLink—the main communications program, with easy-to-use, menu-driven file transfer and a flexible command language that allows you to customize and automate your data communications
- Create Remote—the command-file editor, with extensive on-screen help that makes it simple for you to install even the most complex logon or remote application in P.A.M., where it is available at the touch of a finger
- Monitor—the communications program for a second Touchscreen PC.

**HP Computer Museum**  
**[www.hpmuseum.net](http://www.hpmuseum.net)**

**For research and education purposes only.**

# Table of Contents

---

- 1** Introduction
- 5** Getting Started with AdvanceLink
- 6** Transferring Files with Another HP Touchscreen PC
- 12** Installing Automatic Logon with an HP 3000
- 18** Saving Information from CompuServe

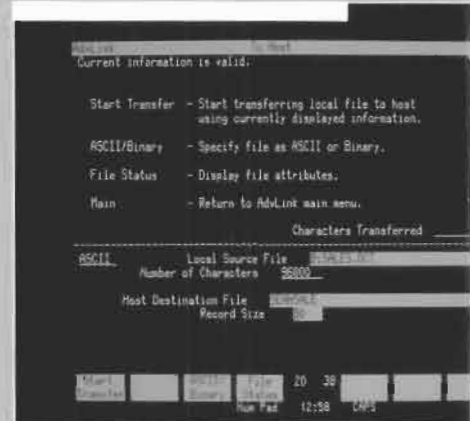
## Introducing AdvanceLink

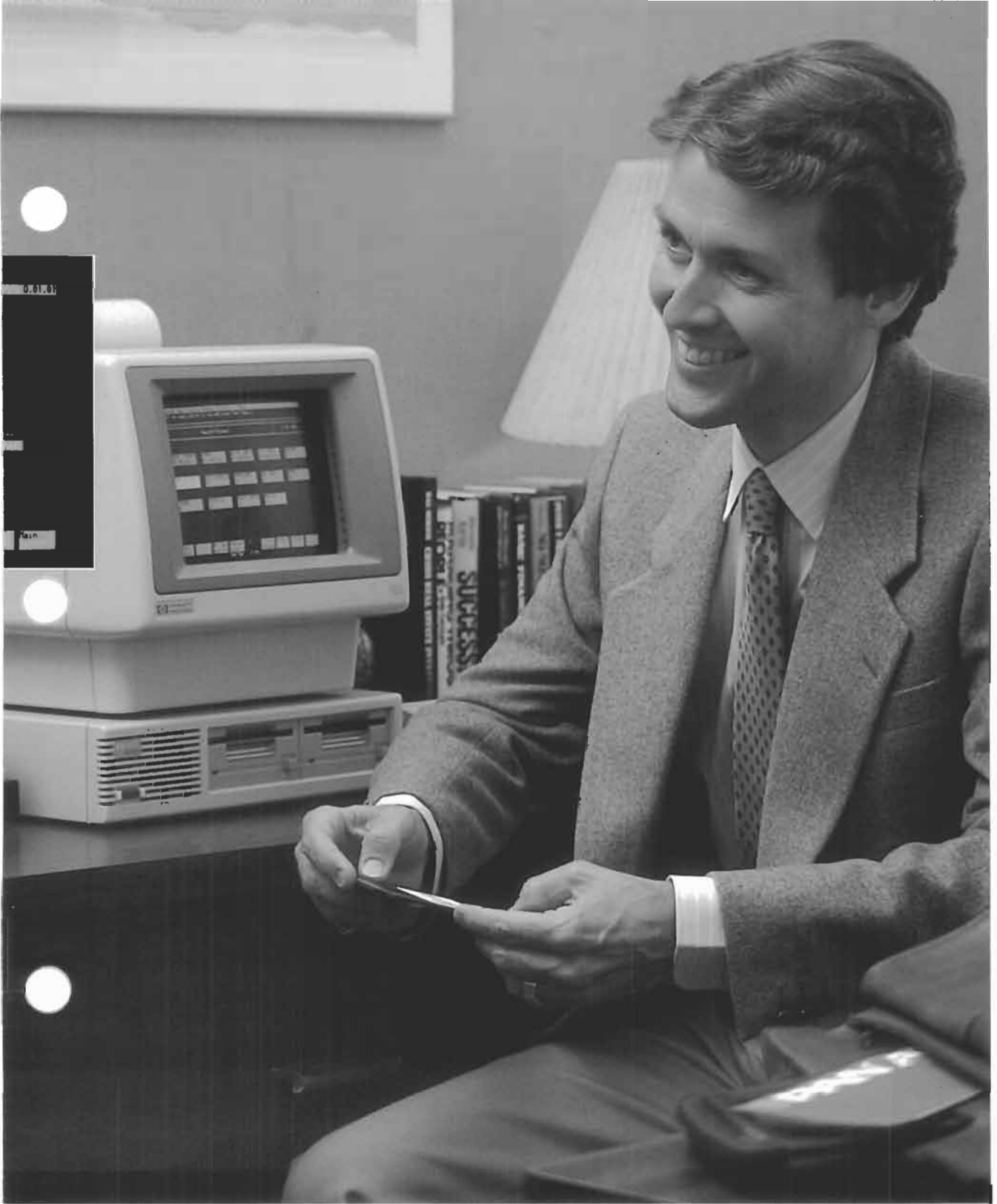
AdvanceLink is the tool that makes your computer much more powerful than one computer. Link your Touchscreen PC into another computer, and that computer—across the room or across the continent—is at your fingertip. That computer might be:

- the Touchscreen PC at your colleague's desk in another city
- the HP 3000 in your home office
- the data bases and communications facilities of CompuServe.

For example, with AdvanceLink you can set up a command file that:

- connects you—through a modem—to an HP 3000 in a distant city
- logs you on to that HP 3000
- transfers a file—a memo, for example, or a sales report—with complete error-checking
- logs you off
- performs all of these tasks when you simply touch a label on the P.A.M. Screen and start the application.





With another command file—also represented by a P.A.M. label—you can:

- log on to CompuServe
- check your electronic mail for any recent messages
- look at the Official Airline Guide® for the most convenient flight—or consult dozens of other helpful data bases.

AdvanceLink keeps your desk neat and organized, because you have so much information available at your screen—information without paper:

- memos
- reports
- stock prices
- news
- air schedules
- bibliographies
- electronic mail.

The information you need is on-line, at your Touchscreen PC, with AdvanceLink.









## Getting Started with AdvanceLink



AdvanceLink is a simple program to use, but it does require some care when you first set it up. You can use AdvanceLink to communicate with many different computers, and communicate easily. Each computer that you may want to communicate with, however, requires a slightly different set of instructions for you to follow in preparing the communications link.

So before you get started with AdvanceLink—if your Touchscreen PC is not already set up to communicate—read Chapters 2 and 3 in the reference guide, *Using AdvanceLink*. In that guide you will find all the instructions you need to prepare the link—the hardware, the software, and the cables—to communicate with the computer you want.

There are three exercises in this section. You can perform one, two, or all three of them—depending on what computers or services you may have available. The three exercises are:

1. Transferring files with another Touchscreen PC.
2. Installing automatic logon with an HP 3000.
3. Saving information from CompuServe.

## **Transferring Files with Another Touchscreen PC**

AdvanceLink makes it easy for you to transfer files with almost any other computer. You can send a sales report to the home office or receive a memo from a colleague.

And the file transfer is especially easy with another computer that runs Monitor: a second Touchscreen, an IBM PC, an HP 120, an HP 125, or an HP 3000.

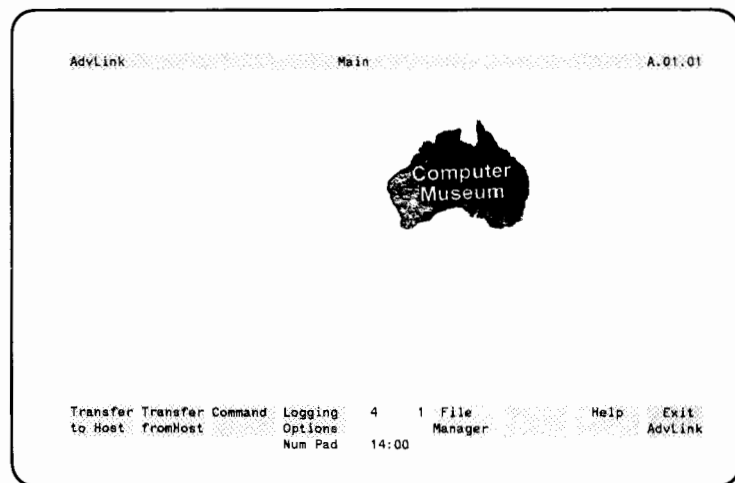
In this exercise, you will transfer a file from your Touchscreen to a second Touchscreen. If you do not have another Touchscreen PC available, read through these steps so that you will have some idea of how file transfer will work for your situation.

First see that both computers are set up in the same room, so you can see how the procedure works on both Touchscreens. Follow the instructions in Chapters 2 and 3 of *Using AdvanceLink* to set them up correctly with a hard-wired cable configuration, so they will communicate directly with each other.

**Then, at your Touchscreen PC:**

1. Turn on the computer and the disc drive, if they are not already on.
2. Start P.A.M., if it is not already running. Put a P.A.M. disc in Drive A and press **Shift** and **CTRL** and **Reset** simultaneously.
3. Remove the P.A.M. disc from Drive A and insert the AdvLink work disc.
4. Touch **Reread Discs**.
5. Touch the **AdvLink** label, so that it is highlighted.
6. Touch **Start Applic**.

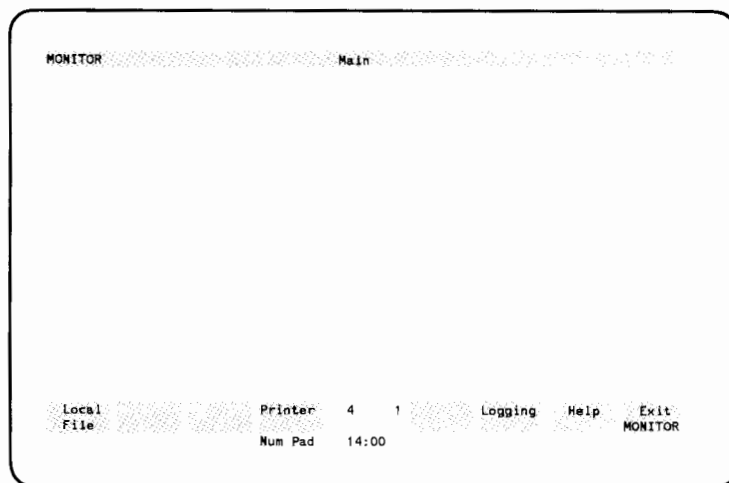
You will now see the AdvLink Main Screen:



**At the other Touchscreen PC:**

7. Turn on the computer and the disc drive, if they are not already on.
8. Start P.A.M., if it is not already running. Put a P.A.M. disc in Drive A and press **Shift** and **CTRL** and **Reset** simultaneously.
9. Remove the P.A.M. disc from Drive A and insert the Monitor work disc.
10. Touch **Reread Discs**.
11. Touch the **Monitor** label, so that it is highlighted.
12. Touch **Start Applic**.

You will now see the Monitor Main Screen:



**Now, back at your Touchscreen PC:**

- 13.** Press  several times. If the computers are communicating, you will see a period prompt appear from the other Touchscreen—one for each time you pressed .
- 14.** Insert in Drive B the disc that contains the file you want to transfer to the other computer. This file can be a text file, a program file—in fact, any kind of file.

**At the other Touchscreen PC:**

- 15.** Insert in Drive B a blank, formatted disc to receive the file as it is transferred.

**At your Touchscreen PC:**

- 16.** Touch . The other Touchscreen—the computer running Monitor—is referred to as the host computer.

Now the Transfer to Host Screen is displayed:

The screenshot shows a terminal window titled "AdvLink To Host A.01.01". The text inside the window is as follows:

```
AdvLink To Host A.01.01
Fill out this form.

Start Transfer - Start transferring local file to host
                using currently displayed information.
ASCII/Binary   - Specify file as ASCII or Binary.
File Status    - Display file attributes.
Main           - Return to AdvLink main menu.

                Characters Transferred _____

ASCII          Local Source File _____
                Number of Characters _____
Host Destination File _____
                Record Size      80

Start Transfer ASCII/ File 16 41 AdvLink
                Binary  Statue Main
                Num Pad 14:00
```

## **Installing Automatic Logon with an HP 3000**

With AdvanceLink, you can write command files that simplify repetitive tasks. Once you have written the command file and installed it in P.A.M., just a touch of your finger will cause all of the commands to be executed, in the order you wrote them.

The most frequent data-communications tasks you perform are logging on and logging off another computer, and starting a remote application on another computer. Create Remote makes it easy for you to write and install command files that perform those tasks.

In this exercise, you will write and use a command file that helps you to log on to an HP 3000 and then log off. If you do not have access to an HP 3000, read through these steps so you will have some idea of how command files will work for your situation.

First see that your Touchscreen PC is set up correctly for a hard-wired cable configuration at a port of the HP 3000. Follow the instructions in Chapters 2 and 3 and Appendix D of *Using AdvanceLink* to make sure that the computers are ready to communicate with each other.

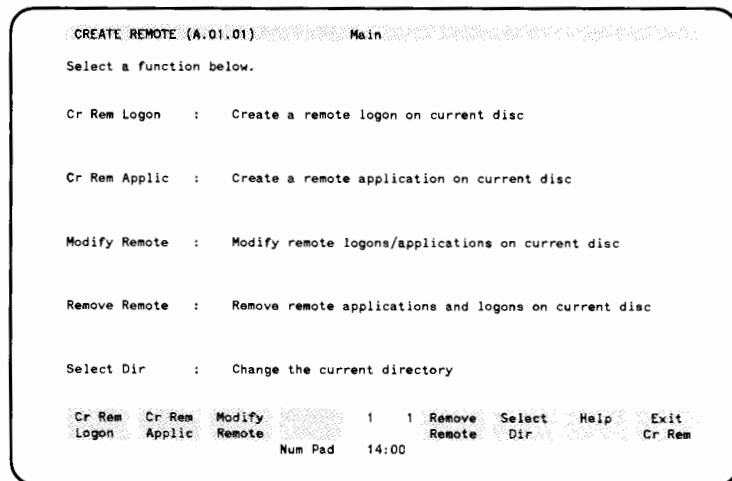
Also, check to see that the version of P.A.M. you are using is Version B, for example B.01.05. The version appears on your SYS\_MASTER disc label. If you have Version A, you can save an automatic logon file as an MS<sup>TM</sup>-DOS batch file.



### Then, at *your* Touchscreen PC:

1. Turn on the computer and the disc drive, if they are not already on.
2. Start P.A.M., if it is not already running. Put a P.A.M. disc in Drive A and press **Shift** and **CTRL** and **Reset** simultaneously.
3. Remove the P.A.M. disc from Drive A and insert the AdvLink work disc.
4. Insert the Create Remote work disc in Drive B.
5. Touch **Reread Discs**.
6. Touch the **Create Remote** label, so that it is highlighted.
7. Touch **Start Applic**.

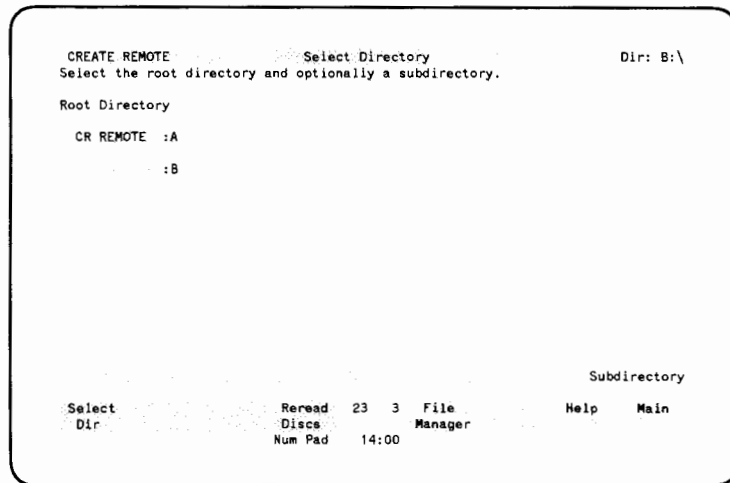
You will now see the Create Remote Main Screen:





8. Touch **Select Dir**.

Now you see the Select Directory Screen:



9. Touch **:A**, so that it is highlighted. This is the drive with the AdvLink disc in it.
10. Touch **Select Dir**, and you will see the Create Remote Main Screen again.

**11.** Touch `Cr Rem Logon`.

Now you see the Create Remote Logon Screen:

CREATE REMOTE Create Remote Logon Dir: B:\

Enter the logon/logoff procedure or press Next Logon to toggle through some defined logons. Press Help for more information.

Install or File Name

Password

Logon Procedure

Logoff Procedure

Exit ADVLINK

Install Save as Save as Next 6 1 File Undo Help Main  
Logon File Batch Logon Num Pad Manager 14:00

Press Next/Prev for more procedure strings.

**12.** Type HP3000 in the field labelled `Install or File Name` and press `Return` twice.

**13.** In the field labelled `Logon Procedure`, type the following lines, and press `Return` at the end of each line:

```
&TERMINATOR OFF  
      (blank line)  
&PAUSE 1  
      (blank line)  
&TERMINATOR "^Q"  
hello william.tell
```

Produce each "blank line" by pressing `Return` without typing anything, and substitute your own HP 3000 logon sequence for `hello william.tell`.

14. Press , so that the cursor is in the field labelled `Logoff Procedure`, then type on the four lines of that field:

```
(blank line)
bye
&PAUSE 5
&EXIT
```

—and press .

15. Touch `Install Logon`.
16. Touch `Main`.
17. Touch `Exit Cr Rem`.

Now you will see the P.A.M. Screen, and one of the labels will be your `HP3000` logon-logoff command file, newly installed on the AdvLink disc in Drive A.

18. Touch `HP3000`, so that it is highlighted.
19. Touch `Start Applic`.

Now you will see your Touchscreen PC automatically logging on to the HP 3000 by using AdvLink and the command file that you just installed. At this point you can perform whatever tasks you usually perform on the HP 3000. Then you can also use the installed command file to log off.

- 20.** If the AdvLink function key labels are not visible—starting with `Transfer to Host` at the left of your screen—press `Shift` and `User` simultaneously to display those labels.
- 21.** Touch `Exit AdvLink` to display the P.A.M. Screen again.
- 22.** Touch `HP3000` again.
- 23.** Touch `Start Applic.`

The “application” that starts this time is the logoff sequence, and you will see your Touchscreen PC logging off, then exiting from AdvLink. The P.A.M. Screen will again be visible.

Now you have a command file ready at any time to log on to the HP 3000 and then—if you are already logged on—to log off. And you can do all this at the touch of a finger.

## **Saving Information from CompuServe**

AdvanceLink makes it easy for you to save information that you receive from another computer. You can save whatever is transmitted to your Touchscreen PC by using the logging capabilities of AdvLink, and that information—an airline schedule, a piece of electronic mail, the history of a stock's price—is on your disc, ready for you to use when it is convenient for you.

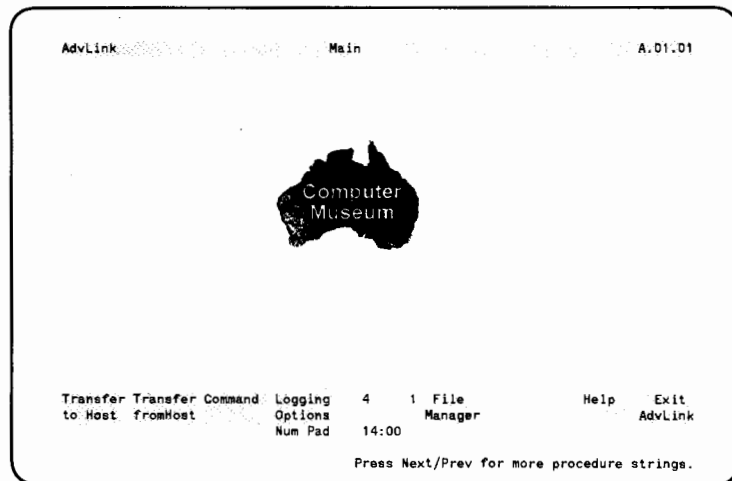
In this exercise, you will save the latest news bulletin from CompuServe. If you do not have a subscription to CompuServe, read through these steps so that you will have some idea of how logging—that is, saving information—to a disc file will work for your situation.

First see that your Touchscreen PC is set up with a modem and a telephone line. Follow the instructions in Chapters 2 and 12 of *Using AdvanceLink* to set up the cabling and the configuration for communication with CompuServe.

**Then, at *your* Touchscreen PC:**

1. Turn on the computer and the disc drive, if they are not already on.
2. Start P.A.M., if it is not already running. Put a P.A.M. disc in Drive A and press **[Shift]** and **[CTRL]** and **[Reset]** simultaneously.
3. Remove the P.A.M. disc from Drive A and insert the AdvLink work disc.
4. Insert a blank, formatted disc in Drive B. This is the disc you will save the information on.
5. Touch **Reread Discs**.
6. Touch the **AdvLink** label, so that it is highlighted.
7. Touch **Start Applic**.

You will now see the AdvLink Main Screen:



8. Touch `Logging Options` .
9. Touch `Local File` .
10. At the prompt `Enter local log file name (or RETURN):`, type `B:LOGFILE` and press `Return`.
11. Turn the modem on, if it is not already on.  
If you do not have a CompuServe Network telephone number available locally, you will probably want to gain access to the system through TYMNET®, TELENET®, or DataPac. Consult your CompuServe manual for the instructions in that case; they differ slightly from Steps 12 through 15.
12. Dial your local CompuServe Network telephone number; use the commands appropriate for your modem. For example, if you are using a Hayes Smartmodem™ in New York City, type `AT DT 758-4114` and press `Return`.
13. Press `CTRL` and the `C` key simultaneously.
14. At the prompt `USER ID:`, type your ID number—for example, `76003,5`—and press `Return`.
15. At the prompt `PASSWORD:`, type your password—for example, `BOAT*TOUCH`—and press `Return`.

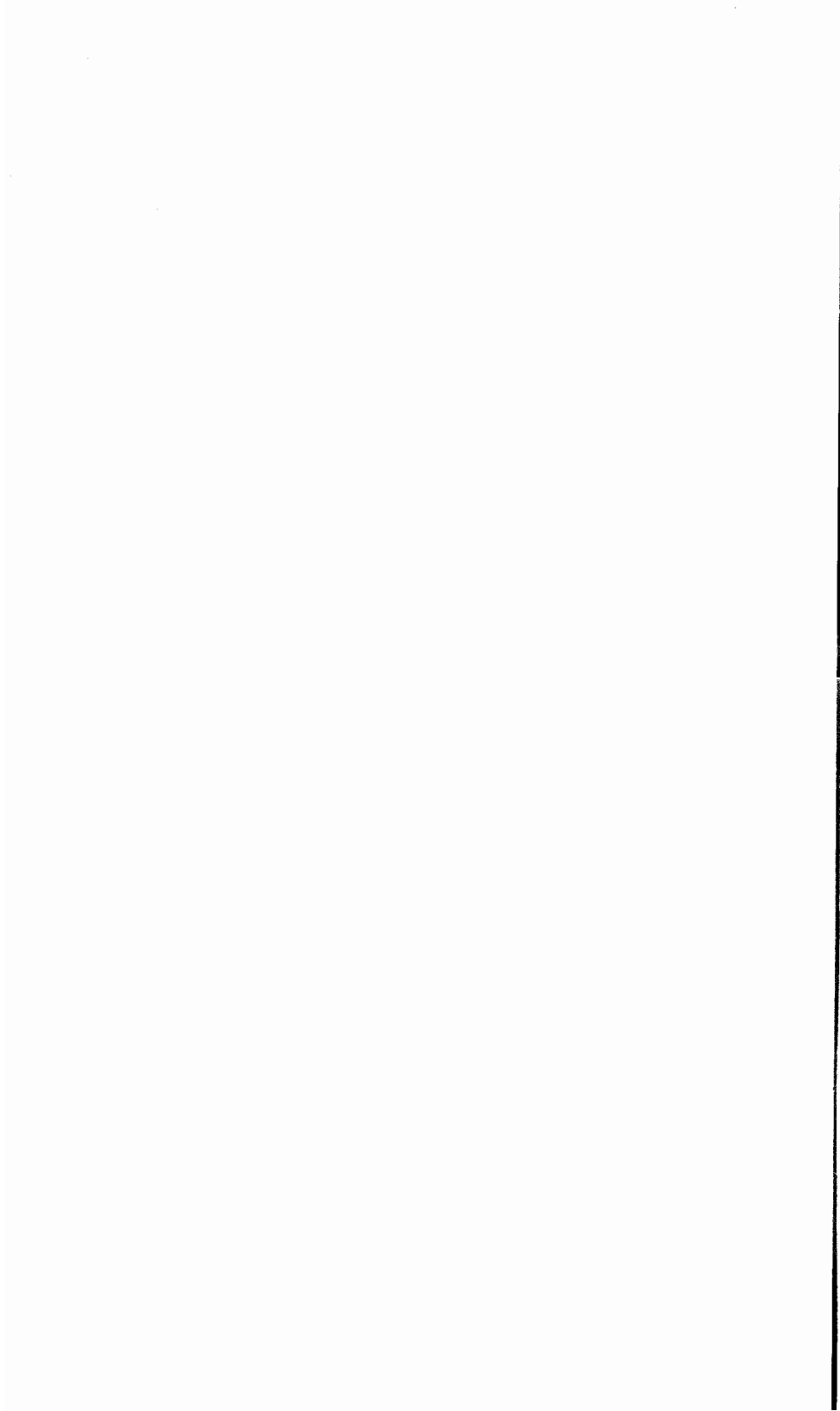
Now you are logged on to CompuServe and your logging file `LOGFILE` is keeping track of everything. (Notice that these similar terms refer to different things: *logging on* is "signing on," while *logging* is "keeping a record.")

- 16.** At the ! prompt, type GO APV. Now you see the AP Viewdata menu.
- 17.** Type 1 and press .
- 18.** Type 1 and press  again.

You see the latest news bulletin scroll across your screen. If you don't have time to read it now, you can return to it later by looking at the logging file you named LOGFILE.

You can continue to explore other parts of the CompuServe system, keeping a record of all the information you receive on LOGFILE.
- 19.** When you are finished, type OFF and press .
- 20.** Hang up your modem. If it is a Hayes Smart-modem, type +++, wait one second, then type AT H and press .
- 21.** Touch `AdvLink Main` .
- 22.** Touch `Exit AdvLink` .





## Setting You Free with AdvanceLink (45431-90004)

We welcome your evaluation of this manual. Your comments and suggestions will help us improve our publications. Please use and attach additional pages if necessary.

Please circle the following Yes or No:

- |   |     |    |
|---|-----|----|
| <input type="checkbox"/> Is this manual well organized?               | Yes | No |
| <input type="checkbox"/> Is the information technically accurate?     | Yes | No |
| <input type="checkbox"/> Are instructions complete?                   | Yes | No |
| <input type="checkbox"/> Are concepts and wording easy to understand? | Yes | No |
| <input type="checkbox"/> Are examples and pictures helpful?           | Yes | No |
| <input type="checkbox"/> Are there enough examples and pictures?      | Yes | No |

Comments: \_\_\_\_\_  
\_\_\_\_\_  
\_\_\_\_\_  
\_\_\_\_\_  
\_\_\_\_\_

Name: \_\_\_\_\_

Title: \_\_\_\_\_

Company: \_\_\_\_\_

Address: \_\_\_\_\_

City: \_\_\_\_\_

State: \_\_\_\_\_ Zip: \_\_\_\_\_

Please tear out and mail in.



Tape

Please do not staple

Tape

Fold here

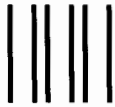


NO POSTAGE  
NECESSARY  
IF MAILED  
IN THE  
UNITED STATES

Hewlett-Packard Company  
Personal Software Division  
3410 Central Expressway  
Santa Clara, CA 95051, U.S.A.  
ATTN: Learning Products Center

POSTAGE WILL BE PAID BY ADDRESSEE

**BUSINESS REPLY MAIL**  
FIRST CLASS PERMIT NO. 1626 SANTA CLARA, CA



**Setting You Free with AdvanceLink (45431-90004)**

We welcome your evaluation of this manual. Your comments and suggestions will help us improve our publications. Please use and attach additional pages if necessary.

**Please circle the following Yes or No:**

- |   |     |    |
|---|-----|----|
| <input type="checkbox"/> Is this manual well organized?               | Yes | No |
| <input type="checkbox"/> Is the information technically accurate?     | Yes | No |
| <input type="checkbox"/> Are instructions complete?                   | Yes | No |
| <input type="checkbox"/> Are concepts and wording easy to understand? | Yes | No |
| <input type="checkbox"/> Are examples and pictures helpful?           | Yes | No |
| <input type="checkbox"/> Are there enough examples and pictures?      | Yes | No |

**Comments:** \_\_\_\_\_  
\_\_\_\_\_  
\_\_\_\_\_  
\_\_\_\_\_  
\_\_\_\_\_  
\_\_\_\_\_

Name: \_\_\_\_\_

Title: \_\_\_\_\_

Company: \_\_\_\_\_

Address: \_\_\_\_\_

City: \_\_\_\_\_

State: \_\_\_\_\_ Zip: \_\_\_\_\_

Please tear out and mail in.



Tape

Please do not staple

Tape

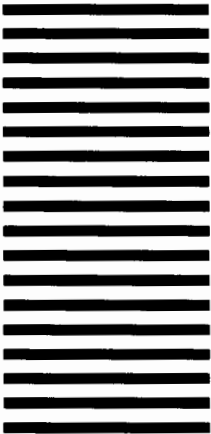
Fold here

ATTN: Learning Products Center

Hewlett-Packard Company  
Personal Software Division  
3410 Central Expressway  
Santa Clara, CA 95051, U.S.A.

POSTAGE WILL BE PAID BY ADDRESSEE

**BUSINESS REPLY MAIL**  
FIRST CLASS PERMIT NO. 1626 SANTA CLARA, CA



NO POSTAGE  
NECESSARY  
IF MAILED  
IN THE  
UNITED STATES





