

# DeskScan Iip Quick Reference Guide for Microsoft® Windows

## 1. HP ScanJet Iip User's Guide



**Chapter 1**  
Installation Instructions

**Chapter 2**  
Getting Started

**Chapter 3**  
Scanning Concepts

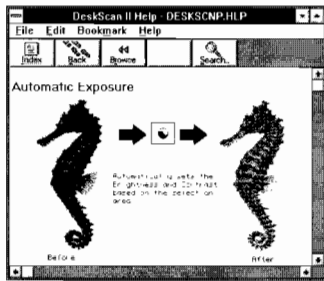
**Chapter 4**  
Automatic Document Feeder

**Chapter 5**  
Service Information

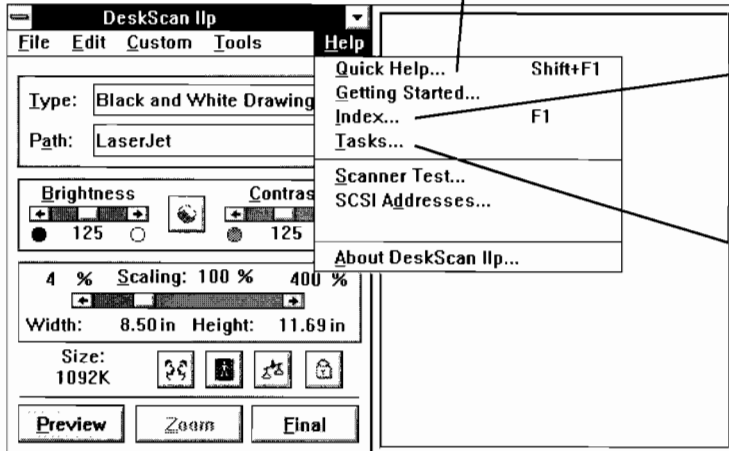


## 2. DeskScan Iip Online Help

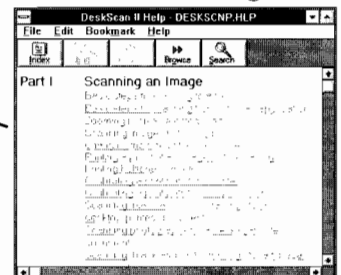
context sensitive  
reference information



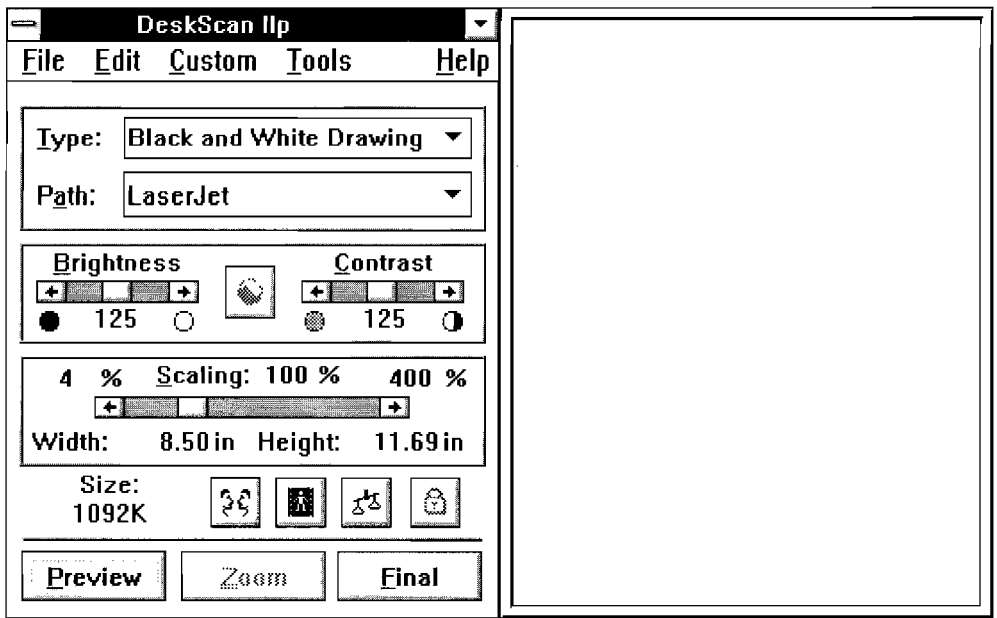
index of help topics



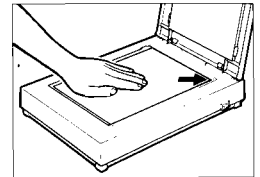
scanning tasks



# Quick Steps To Scanning



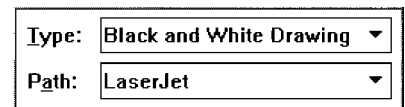
1. Place the image on the scanner's glass.



2. Click

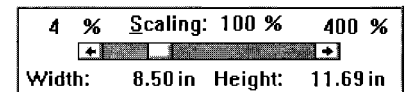


3. Select the image type



4. Select a path

5. Scale the image



6. Click



# Menus

File	
Save	Ctrl+S
Save As...	
Print	Ctrl+P
Printer Setup...	
Samples	
Exit	

**Save** - Saves the file

**Save As** - Saves and renames the file

**Print** - Prints a copy of the selected image area

**Page Setup** - Selects printing options

**Samples** - Prints selected image area in halftone patterns

**Exit** - Exits DeskScan IIp

Edit
Copy Ctrl+Ins

**Copy** - Copies image to clipboard

Custom
Image Type...
Print Path...
Image Size...
Preview Size...

**Image Type** - Creates specific image type and sharpening level

**Print Path** - Selects resolution and calibrates print path

**Image Size** - Creates custom image size and units of measure

**Preview Size** - Changes size, color or turns off Live Preview



**Automatic Exposure** - Automatically sets brightness and contrast.



**Mirror Image** - Flips image from left to right.



**Negative Image** - Converts image to photographic negative.



**Lock Image Size** - Locks image width and height.



**Non-Uniform Scaling** - Allows independent adjustment of width and height.

## Tools

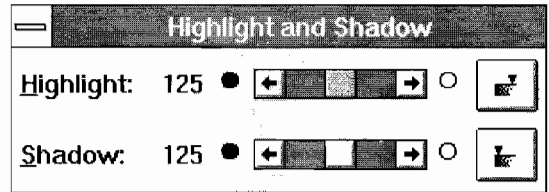
Both of these floating tools can be open at the same time.

### Highlight and Shadow

Independently adjust lightest and darkest areas of the image using slider bar or icon. To return to the default settings, set the Highlight and Shadow controls to 125.

## Tools

### Highlight and Shadow Emphasis



### Emphasis

Moving the three control points adjusts the middle tones in an image. Changes are lost when tool is closed.

