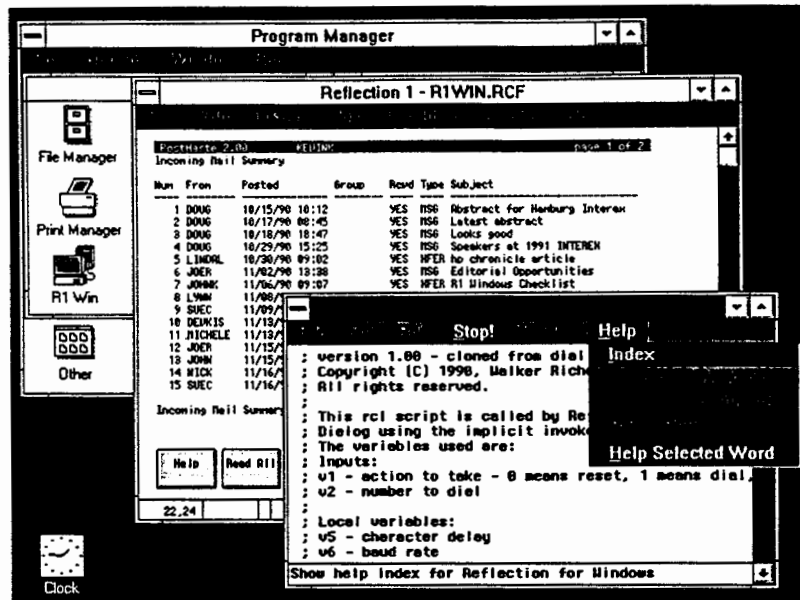


WINDOWS
3.0

HP 2392A TERMINAL EMULATION ON
THE WINDOWS 3.0 DESKTOP

REFLECTION¹



Reflection Series Software from Walker Richer & Quinn has always been the first choice for terminal emulation in the HP 3000 community. Now, the productivity-enhancing features of Reflection products for MS-DOS and the Macintosh are available for Microsoft's popular Windows 3.0. Like all Reflection products, Reflection 1 for Windows offers file transfer, background processing, command language, and more, in addition to flawless terminal emulation.

Reflection 1 for Windows takes full advantage of the Windows graphical user interface. When Reflection is running, your host session appears in a window that is subject to all the rules on the Windows desktop. You can resize, move, close, or shrink it to an icon. Move through your host session, pointing and clicking with a mouse on pull-down menu commands and in dialog boxes, or use your keyboard. Reduce the Reflection window and then copy and paste data from it into another application. Or, run multiple sessions side-by-side and move data among them. Reflection 1 uses Windows sophisticated memory management capabilities, so that every application you need can be running simultaneously on the desktop.



HP Computer Museum
www.hpmuseum.net

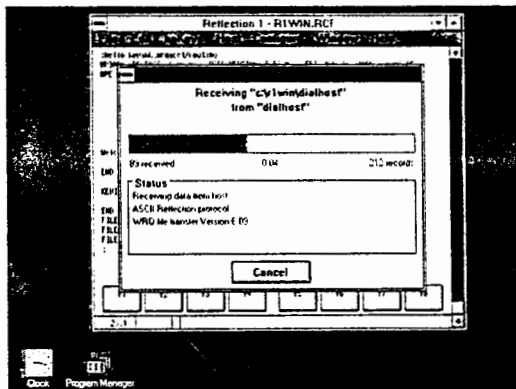
For research and education purposes only.

MULTITASKING

With Reflection 1, you get your host session and other PC applications at the same time. For example, to transfer a file to the host, just give Reflection the filename and destination; it takes care of everything while you work on a memo in your word processor or juggle numbers in your spreadsheet application. Shrink Reflection's file transfer session to an icon or reduce it to a small window to monitor its progress.

FILE TRANSFER

Reflection's proprietary file transfer protocol is fast, error-free, and supports all host file attributes. It sends both ASCII and binary files back and forth between the PC and HP, DEC, and UNIX hosts over any kind of connection — direct, modem, X.25, LAN, or multiplexer. KERMIT and XMODEM support is also included for sharing files with other computers, public data services, and bulletin boards. Host file transfer programs are included at no extra cost and are easy to upload from your PC.



Accurate file transfer to your host.

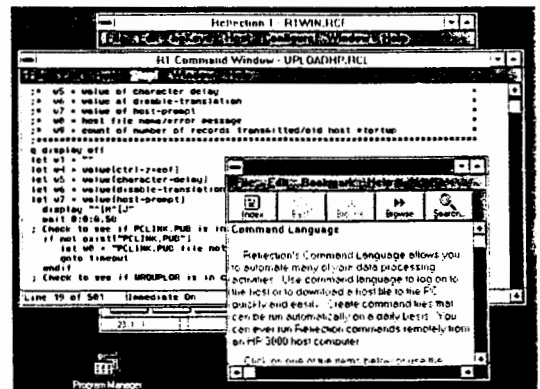
RESCALABLE WINDOWS AND FONTS

Resize the Reflection Terminal Window just like all the other windows on the desktop — all text and function key labels scale proportionately. When you maximize Reflection, the host session fills the entire screen.

COMMAND LANGUAGE

To help automate repetitive tasks, Reflection 1 includes a powerful command language with more than 140 BASIC-like commands. Use them to write a command file to speed you through complicated logon routines or to dispatch file transfers.

Reflection's Command Window accommodates multiple lines of text at a time. Zoom it to full screen to view and edit the command file you're writing. You can also keep the host session active in another window as you write a Reflection command file. Command language adds batch processing capability to the Windows 3.0 environment.



Create and edit command files in a window.

Another time-saving advantage of Reflection's command language is its command file compatibility with MS-DOS and Macintosh versions of Reflection — an important feature in multi-platform environments.

COPY AND PASTE

With Reflection 1 you can move information from the host to another application via the Clipboard. Just select, copy, and paste. The Copy Table command makes transferring host data to a spreadsheet neat and easy; text and numbers move via the Clipboard directly into cells on your spreadsheet.

PROTECTED MODE

Reflection 1 is structured so that it's the ideal multitasking partner for Windows 3.0. Running in protected mode, Reflection transcends the 1-megabyte memory limitation and uses all the memory that your PC has available. This allows a peaceful coexistence between Reflection and every other application running on the desktop.

Even large PC applications have room to work alongside Reflection. Windows 3.0 manages memory so that you get the productivity benefits of multitasking, and Reflection is engineered to work the way Windows does. (To take full advantage of protected mode multitasking, you should have at least 2 megabytes of RAM on your PC.)

ONLINE HELP

Reflection offers context-sensitive help on every menu, command, dialog box item, and terminal field. This powerful source of documentation also covers Reflection's command language in detail, providing command syntax and examples. Using Windows help format, it includes bookmarks and browsing capabilities. Keep the help icon on the desktop for quick reference throughout your terminal session.

AUTOMATIC DIALING

Reflection's Host menu includes a Dial command for setting up automatic modem dialing. You can store up to five numbers for speedy connections to a variety of hosts.

NETWORK INTERFACES

With Reflection 1, your network-linked PC functions as if directly connected to the host. Just select your network from the choices offered in the Configure Datacomm dialog box. Reflection delivers the same accurate terminal emulation and error-free file transfer over popular local and wide area networks, including those from Novell, 3Com, Ungermann-Bass, IBM, and Hewlett-Packard.

NETWORKS & MULTIPLE SESSIONS, TOO

If you work in an environment where more than one type of host computer contains the data you need, the Reflection Network Series' 3000 Connection will be of interest to you. An ideal networking partner for Reflection 1 for Windows, the 3000 Connection includes a TCP/IP stack, a Telnet layer, and an NS/VT layer, giving you access to almost any host on your network over Ethernet. In addition, the 3000 Connection provides concurrent access to any NDIS network operating system, including Novell, 3Com, and LAN Manager.

Working with Reflection 1, this flexible networking capability allows multiple HP 3000 and 9000 sessions, a UNIX session, and access to your PC applications — all at the same time. Moving among these sessions is as easy as moving the mouse and clicking where you want to work. No more quitting one session and rebooting to start another.

The 3000 Connection needs only one network interface card in the PC to give you multiple sessions. Reflection provides the interface for each session and is a terminal window to every host on your network.

PRODUCT SPECIFICATIONS

HP Terminal Emulation:

Terminal ID response: HP 2392A
Modes: Local, remote, block, format, modify line, modify all, display functions, memory lock, auto linefeed
Typeahead buffer
Unlimited configurations

Communications:

Connection: Direct, modem, or network
Baud rates: 300 through 57,600
Parity: Even, odd, 1's (mark), 0's (space), none
Enq/Ack pacing: On or off
Receive and transmit pacing: XON/XOFF, hardware, or none
Word length: 8 bits
Serial ports: 1-4

File Transfer:

Public protocols: KERMIT, XMODEM
WRQ proprietary protocol to: MPE, MPE XL, UNIX, ULTRIX, HPUX, VMS
Transfer methods: ASCII, binary, or labels

Command Language:

Over 140 commands to control PC and host interaction
Operators: String, Boolean, Integer
Control: IF, ELSE, ENDIF, FOR, GOTO, INVOKE, CHAIN, GOSUB
Structure: BASIC-like
Variables: Up to 800
Subroutines: Up to 5 levels
Execution: From the Command Window, desktop, file, or escape sequence

Display Control:

Columns: Up to 80
Display memory: 256K
Colors: Configurable from Windows Control Panel

Printer Support:

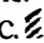
Local printing: Controlled by Windows 3.0 Print Manager
Other printing: To disk file, display, or remote system printer

Network Support:

Reflection Network Series' Telnet Connection and 3000 Connection from WRQ
LAN Manager and OfficeShare from Hewlett-Packard
Net/One from Ungermann-Bass
LAN Manager from 3Com
IBM LAN Asynchronous Connection Server
Novell networks with NACS, NASI, Network Products' ACS2, Eicon Technology's X.25 server, or NetWare for VMS
STARLAN from AT&T
Interrupt-14

Machine Requirements:

IBM AT, XT, PS/2, or compatible (not recommended for some 286 systems with a serial connection to the host)
Memory: 256K for Reflection and 640K for Windows
Software: Windows 3.0 and MS-DOS 3.1
Datacomm: Serial port or network connection
Mouse: Recommended but not required

**Walker Richer
& Quinn, Inc. **

2815 Eastlake Ave. E.
Seattle, WA 98102
(206) 324-0407
FAX: (206) 322-8151
European Office:
Zeestraat 55
2518 AA Den Haag
The Netherlands
+31.(0)70.356.09.63
FAX: +31.(0)70.356.12.-

S-DOS



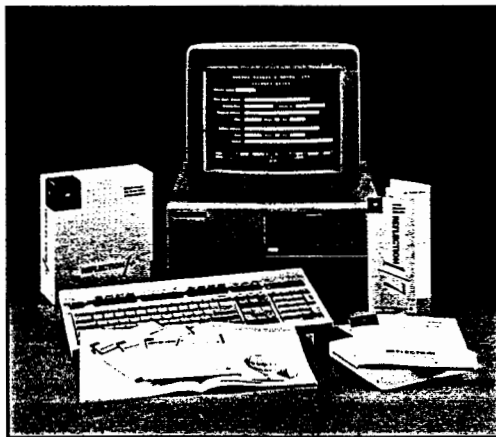
**REFLECTION 1 AND REFLECTION 7—
HEWLETT-PACKARD ALPHANUMERIC AND
COLOR GRAPHICS TERMINAL EMULATION**

REFLECTION¹

REFLECTION⁷

Reflection 1 and Reflection 7 from Walker Richer & Quinn continue to be the leading software choices to connect personal computers to HP 1000, 3000, and 9000 systems. People around the world rely on Reflection for accurate terminal emulation and advanced features.

ALPHANUMERIC EMULATION



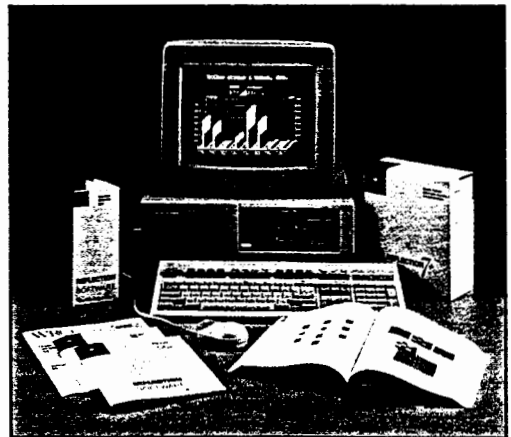
Reflection 1 runs applications designed for the HP 2392A and 700/92 terminals. It supports block and character mode operations and the forms caching, non-displaying terminator, and modified data tag capabilities of the HP 2394A and 700/94 terminals.

A full-featured VT102 emulator is also included. It's useful for working in a UNIX environment, with platforms that require an ANSI terminal, when on line to an IBM mainframe, or dialing into a public data network or mail system.

EMULATION EXTRAS

When you use a color display, Reflection lets you choose colors for your screen and user key labels and save them to a configuration file. You can type ahead into a keyboard buffer to avoid waiting for prompts from the host. Reflection provides horizontal scrolling to column 9999 and more display memory than a terminal.

COLOR GRAPHICS EMULATION



Reflection 7 faithfully emulates the HP 2627A, 2623A and Tektronix 4010 graphics terminals and provides all of the functionality of Reflection 1. All HP host graphics applications that use these terminals are fully supported.

GRAPHICS ENHANCEMENTS

Use color to enhance on-screen graphics. Select primary, secondary, boundary, and background colors and choose patterns for polygon fill. Eight sizes of graphics text, upright or slanted, can be shown in four directions and justified or centered. Color pairs are fully supported, too.

You can attach a plotter to any serial port in eavesdrop or pass-through mode. Bit mapped graphics printing allows local printing of the graphics display. Graphics images can be sent to the HP PaintJet, and other popular printers, in portrait or landscape mode.

The following features are common to both Reflection 1 and Reflection 7. These additional capabilities go beyond terminal emulation to give you greater power and productivity.

FILE TRANSFER

PC and host files can be easily exchanged using Reflection's error-free file transfer. Both ASCII and binary files can be shared between the PC and an HP 3000, Digital VAX/VMS, HP 9000, or any UNIX system. Reflection's proprietary protocol recognizes standard wildcard characters to speed up and simplify transferring multiple files.

TCP/IP network users enjoy the speed provided by the addition of FTP protocol support to Reflection and WRQ's TelnetManager.

Reflection also includes KERMIT and XMODEM support for sharing files with other computers, public data services, and bulletin boards.

MEMORY-SAVING EDGE

Reflection's latest version adds powerful new features, but requires less memory than previous versions. Configuration options let you adjust Reflection's size, freeing up RAM for other programs. Reflection can also address LIM expanded memory for additional memory savings. In its minimum configuration, Reflection 1 uses only 100K; Reflection 7 only 225K. When you're not using host graphics you can further reduce Reflection 7's memory to 110K.

Reflection also uses dynamic memory management with code overlays. Reflection only loads the instructions into memory that it needs to perform the task at hand. For example, file transfer code is only loaded into memory when you're doing a file transfer.

Occasionally you may find it necessary to exit Reflection in order to run a very large PC application. The new feature, *state save*, lets you remove Reflection from memory, then re-start it with your host session, terminal settings, user keys, and display memory just as you left them.

MULTITASKING

Use your PC with a local application while Reflection runs in background. Run a report or start a file transfer in Reflection, then hot-key to another PC application. Log on to your mail system and let Reflection monitor incoming messages in background. With Reflection the host is just a hot-key away.

HARDWARE SUPPORT

Reflection supports all the popular display hardware available today. It automatically selects fonts and display routines to make the most of your video adapter and monitor.

COMMAND LANGUAGE

Reflection includes a powerful command language to help you automate repetitive tasks. Over 140 commands control PC and host interaction. Command language programs can be written to dial modems, automate complicated logon routines, do file transfers, or schedule backups, all without user interaction. The most frequently used DOS commands — DIR, TYPE, CHDIR, RENAME, ERASE, COPY, and PRINT — create a convenient interface to DOS from within Reflection.

KEYBOARD REMAPPING

Customize your keyboard to match a familiar terminal layout or host application with Reflection's keyboard remapping. Override the default action for a particular key, or even map text strings to one keystroke. Different keyboard maps are stored in a configuration file and can be easily invoked.

INTERNATIONAL SUPPORT

Menus, labels, and error messages can be shown in French, German, Italian, or English. You can configure Reflection to respond correctly to European keyboards. Code page support is also included.

PLUS OPTION

The PLUS option adds these capabilities to Reflection 1 and Reflection 7.

Backup and Restore

Reflection's PLUS option makes it easy to protect your PC files. Just answer a series of questions, and Reflection will guide you through a PC file backup to an HP 3000, VAX/VMS, or UNIX-based host. An important file, a directory, or an entire hard disk can be stored in a single file on the host. Your backup can be scheduled to occur automatically or run in background.

Network Interfaces

You get accurate terminal emulation and error-free file transfer over local and wide area networks from Novell, 3Com, Ungermann-Bass, and others. Just toggle through the network choices in Reflection's datacomm configuration menu.

Reflection's server version includes a counter that tracks the number of simultaneous Reflection users on a network. When a PC running Reflection is shut off, the user count automatically decreases by one.

Reflection can be installed on an HP 3000 under HP's ResourceSharing. Ethernet and STARLAN versions of HP's OfficeShare Network are supported in non-PLUS versions of Reflection.

Application Program Interface

PLUS also includes Application Program Interface libraries and references. With API, PC programmers can write programs to control Reflection while Reflection runs in background. An API program can do anything that a Reflection user can do at the keyboard.

RELATED PRODUCTS FROM WRQ

We have a full line of connectivity products designed to integrate PCs and Macintosh computers into the Hewlett-Packard data processing environment.

Reflection 1 PLUS for the Macintosh

Turn your Macintosh into a versatile HP workstation with more power than the HP 2392A terminal it replaces. There's file transfer, command language, and backup and restore.

Reflection 3 PLUS for the Macintosh

Get accurate emulation of the HP 2393A graphics terminal in addition to the features of Reflection 1 PLUS for the Macintosh.

TelnetManager

With TelnetManager, your PC can be a virtual terminal over your TCP/IP network. You can maintain and manage multiple terminal sessions to one or more hosts on the network and enjoy speedy file transfers with FTP protocol support.

Dispatch

Based on WRQ's PPL technology, Dispatch works in a true client/server relationship with HP DeskManager. The majority of the work — creating, reading, printing, and storing mail — is done on the PC. Dispatch requires an HP 3000 connection only during mail transfers.

RSVP

Reflection's Spooled Virtual Printer lets you route print output to printers connected to the host. Work groups can share expensive laser or color printers using a Reflection connection.

DeskDirect

This office utility lets you send PC and Macintosh files to others in your organization via HP DeskManager.

PRODUCT SPECIFICATIONS

HP Terminal Emulation:

Terminal ID response options: HP 700/94, 2394A, 2624B, 700/92, 2392A, 2622A, 2626A

Modes: Local, remote, block, format, modify line, modify all, display functions, memory lock, auto linefeed, forms cache

Digital Terminal Emulation:

Device attributes: VT220, VT220x, VT102, VT100, VT100av, VT100p

Modes: Local, remote, modify line, display functions

Additional Reflection 7 Emulation:

Terminal ID response options: HP 2397A, 2627A, 2393A, 2623A, 150A, 2390A, Tektronix 4010

Communications:

Connection: Direct, modem, or network

Baud rates: 110 through 115,200

Parity: Even, odd, 1's(mark), 0's(space), none

End/Ack pacing: Yes or no

Receive and transmit pacing: XON/XOFF, hardware, or none

Word length: 7 or 8 bits

Serial ports: 1-4 (1-8 for PS/2)

File Transfer:

Public protocols: KERMIT, XMODEM, and FTP
(FTP requires TelnetManager)

Proprietary to: MPE, MPE XL, UNIX, ULTRIX, HPUX, VMS

Formats: ASCII, binary

Command Language:

Over 140 commands to control PC and host interaction

Operators: String, Boolean, integer

Control: IF, ELSE, ENDIF, FOR, GOTO, INVOKE, CHAIN, GOSUB

Structure: BASIC-like

Variables: Up to 800

Subroutines: Up to 5 levels

Execution: From the command line, disk file, escape sequence issued by the host, or by a remapped keystroke

Keyboard Remapping:

All keys are remappable

String length: Up to 127 characters

Supported keyboards: IBM PC, AT, Enhanced, HP Vectra

Expanded Memory:

Addresses up to 64K of LIM expanded memory

Display Control:

Columns: Up to 10,000

Display memory: Up to 500K

Colors: Configurable with color monitor

Language: English, German, Italian, and French menus and help screen

Supported 132-Column Adapters:

Manufacturers: ATI, STB, Ahead Systems, Tseng Labs, Everex, Genoa Systems, AST, Paradise, Orchid, HP VGA, Video 7
(Note: Compatibility with these adapters may change with manufacturers' revisions.)

Character Sets:

ASCII, ISO-7, Roman-8, line drawing

Printer Support:

Print to parallel, serial, disk, or device driver

Parallel ports: 1-4

Serial ports: 1-4 (1-8 for PS/2)

Device driver: Any

Compressed and expanded: All HP printers, IBM/Epson, IBM

Proprinter, Okidata, ANSI, Mannesmann-Tally, and Toshiba

Printer Control:

Buffer: Up to 254K

Print command: Disk file or any character string

Escape Xfer: Print display enhancements, configurable for any printer

Graphics Printing for Reflection 7:

Supported bit mapped graphics printers: HP LaserJet, HP PaintJet (color support), HP ThinkJet, HP DeskJet, Epson, IBM

Proprinter, Mannesmann-Tally, Okidata

Modes: Portrait or landscape

Graphics Plotting for Reflection 7:

Plot to disk, or in eavesdrop or pass-through mode

Plotters: All serial HPGL plotters, including HP ColorPro, 7550A, 7440A

Serial ports: 1-4 (1-8 for PS/2)

Machine Requirements:

IBM PC, AT, XT, PS/2 or compatible

Memory: 256K for Reflection 1; 384K for Reflection 7

Datacomm: Serial port or network connection

DOS: 2.0 or higher (3.0 or higher for the AT and PS/2)

Mouse: Supported but not required (Reflection 7 only)

PLUS OPTION

Backup & Restore:

Back up multiple PC files to one host container file

Runs in background and/or unattended

Options: By filename, directory, date or time; all files, new, or changed files

Network Support:

TelnetManager and R-LAT from Walker Richer & Quinn

AdvanceNet from Hewlett-Packard (also supported in non-PLUS versions)

Net/One from Ungermann-Bass

Networks supported by EtherTerm, TokenTerm, PCS/XNS, and PCS1 from 3Com

Novell networks with NACS, NASI, Network Products' ACS², Eicon Technology's X.25 server, or Netware for VMS

STARLAN from AT&T

IBM LAN Asynchronous Connection Server

RAF from Datability

LAT and CTERM from Digital

Application Program Interface:

Libraries: Turbo Pascal, Microsoft C, Microsoft Quick BASIC

**Walker Richer
& Quinn, Inc. **

2815 Eastlake Ave. E.
Seattle, WA 98102
(206) 324-0407
FAX: (206) 322-8151

European Office:
Zeestraat 55
2518 AA Den Haag
The Netherlands
+31.(0)70.356.09.63
FAX: +31.(0)70.356.12.44

Product specifications subject to change without notice.

© Walker Richer & Quinn, Inc. Reflection is a registered trademark of Walker Richer & Quinn, Inc.

Other brand and product names are trademarks of their respective holders.

1/91 10M 40-0014-000

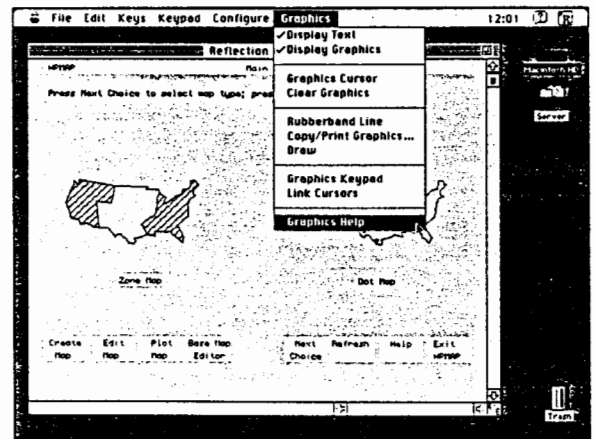
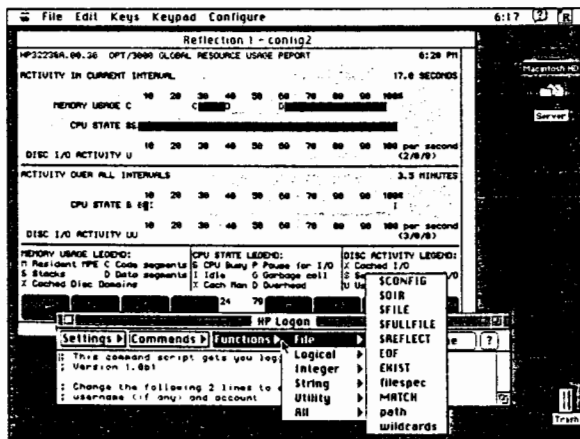
CINTOSH

HEWLETT-PACKARD TERMINAL EMULATION FOR THE MACINTOSH

REFLECTION 1+

REFLECTION 3+

Accurate HP terminal emulation and error-free file transfer are only the beginning with Reflection products for the Macintosh. Flexibility in host connections, including Apple's Macintosh Communications Toolbox, and a powerful command language provide a definitive edge. The friendly Macintosh user interface—and context-sensitive help—simplify the most complicated tasks.



TEXT EMULATION

Reflection 1 Plus gives your Macintosh easy access to HP host applications and data. Reflection 1 Plus delivers accurate terminal emulation of both HP 700/92 and 2392A terminals. HP 700/92 emulation lets you display either 80 or 132 columns on the screen. With either setting, you can dynamically select the font size appropriate for your display by resizing the Terminal Window.

Reflection provides choices for displaying information, too. You can show up to 200 lines of host data on your screen at once. You can even configure the amount of memory used as display memory, which lets you store up to 500 display pages of text to scroll through and review.

GRAPHICS EMULATION

Reflection 3 Plus supports all the text emulation features of Reflection 1 Plus and the graphics capabilities of the HP 2393A and 2623A terminals. With Reflection 3 Plus, you can easily copy and paste host graphics into Macintosh applications.

The latest version of Reflection 3 Plus features improved graphics registration. Reflection incorporates the characteristics of whichever graphics terminal it is emulating, adjusting for the differences in the way the HP 2393A and 2623A terminals overlay and display text and graphics.



The following benefits and features are common to both Reflection 1 Plus and Reflection 3 Plus:

REFLECTION ADVANTAGES

Linking your Macintosh to a Hewlett-Packard host computer gives you new ways to use information. Reflection not only lets your Macintosh function as a terminal, it also allows you to transfer files quickly and easily between your Macintosh and your minicomputer. Using host-based information in local applications expands your computing resources.

Of course, you get all the advantages of the Macintosh environment: point and click, pull-down menus, and copy and paste. Hewlett-Packard function keys are represented as Macintosh buttons. And because Reflection for the Macintosh runs with MultiFinder and System 7, you can keep your host session in the background, while you work with other applications in the foreground.

FLEXIBLE CONNECTIONS

Whether you're linked by a direct serial connection, over a network, or via a modem, connections to your host are simple and flexible. And now, Reflection for the Macintosh includes the Communications Toolbox, letting you connect to hosts over alternate data paths such as AppleTalk and Ethernet.

CONTEXT-SENSITIVE HELP

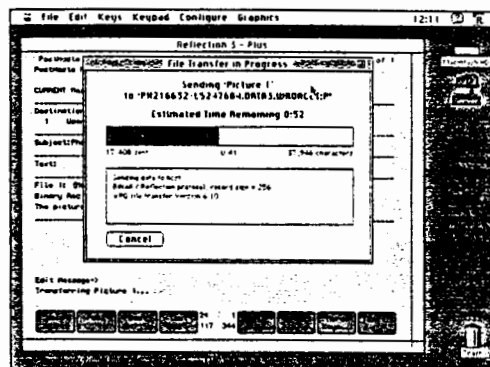
Just as with familiar Macintosh applications, context-sensitive help is always at hand with Reflection for the Macintosh. Help is available for all pull-down menu commands, dialog box options, and for command language SET parameters, functions, and operators.

FAST FILE TRANSFER

With Reflection's proprietary file transfer software, you can exchange files with HP, VAX, and UNIX systems. Just specify the host or local filename in a dialog box. Transfer files in ASCII, binary, MacBinary, and HP labels formats, error-free, using CRC-CCITT standards.

The host portion of Reflection's proprietary file transfer software is included free with each copy, and installation is a breeze—you just upload it once, and it's available for all Reflection users, including those on DOS and Windows platforms.

Reflection also includes KERMIT and XMODEM support for transferring files between other personal computers, mainframes, and public data services, along with support for tools that work with the Communications Toolbox.

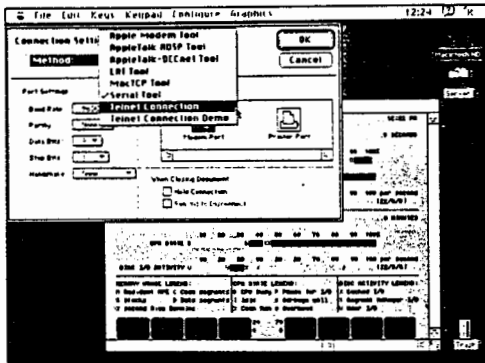


COMMUNICATIONS TOOLBOX

Apple's Communications Toolbox, an extension to the Macintosh operating system, simplifies the way you use communications programs such as Reflection. The Communications Toolbox defines a standard technical and user interface for various communications tools, allowing programs from different software vendors to function smoothly together.

Reflection's Macintosh terminal emulators support connection tools from Apple, WRQ, and third-party vendors for access to host computers that use different communications protocols. With every copy of Reflection, you receive the

Communications Toolbox, along with Apple's Serial Tool, Modem Tool, LAT Tool, and AppleTalk ADSP Tool. Also included is Apple's



MacTCP driver, letting you use Reflection and Telnet tools, such as WRQ's Telnet Connection, to access TCP/IP hosts over Ethernet or AppleTalk. (A demonstration copy of WRQ's Telnet Connection is provided with each copy of Reflection for the Macintosh.)

POWERFUL COMMAND LANGUAGE

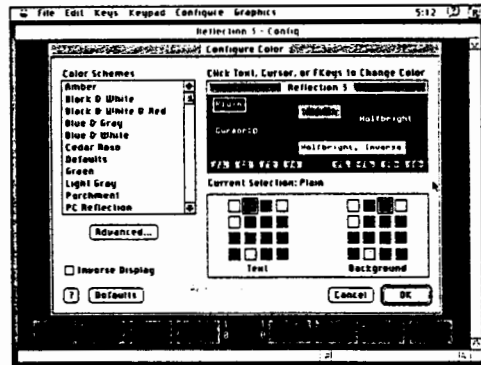
Reflection's simple but powerful command language boosts your productivity, helping you automate routine tasks. Access commands through Reflection's resizable Command Window, or write command files to dial modems, initiate logon sequences, transfer files, and much more, automatically. Most command files can be shared with DOS and Microsoft Windows Reflection users, since the language is compatible across all platforms.

Reflection's command language can also take advantage of the unique interface of the Macintosh operating system. You can use dialog boxes to prompt for information, and even create your own user menu in Reflection's menu bar. A variety of command utilities are also included to help you work more efficiently.

COLOR SUPPORT

Customize colors for your Terminal Window, HP text attributes, function keys, and cursor. Choices are virtually unlimited — choose

from up to 16 million different colors and a library of predefined color schemes. Of course, you can also select black and white. Your personal color combinations are quickly saved in the HP Color Schemes document and can be changed as often as you wish.



With Reflection 3 Plus, you can specify the foreground and background colors for host graphics, too.



SIMPLIFIED PRINTING

Printing is streamlined with Reflection for the Macintosh. You can choose whether to spool data before printing or let Reflection determine spooling, depending on the print job. You can also select the font and size of the printed output, using any font installed on your system, in sizes from 1 to 72 points. Printing can be initiated by the user or by the host.

RELATED PRODUCTS FROM WRQ

Reflection Series

The Reflection Series products provide easy integration of workplace personal computers, supporting DOS, Microsoft Windows, and Macintosh computer platforms. Under DOS, there are Reflection products for HP, VT, Tektronix, and IBM 3270 terminal emulation. For Microsoft Windows users, an HP emulator is currently available, and a VT emulator will be released in the fourth quarter of 1991. Both VT and HP emulators are available for Macintosh users. All Reflection products offer the same high

quality terminal emulation, background processing, file transfer, and command language, easing the transition among platforms.

Reflection Network Series

The Reflection Network Series, including products for both Macintosh and DOS Reflection terminal emulators, offers connectivity options to multiple hosts and LANs. WRQ's Telnet Connection for the Macintosh, a connection tool for Apple's Communications Toolbox, allows Macintosh users of Reflection to access TCP/IP hosts via Telnet protocols, while maintaining other Ethernet or LocalTalk connections. FTP file transfer is also included.

(Additional networking choices are available with the other tools and drivers provided with all Reflection for the Macintosh products.) Other options are available for PC LANs, enabling users to run multiple protocols concurrently, switching back and forth from host sessions to server applications without rebooting.

Reflection Office Connection Series

WRQ offers office connection products that range from PostHaste, a complete electronic mail system for the HP 3000, to MailMessenger, electronic mail gateway software, and DeskDirect, a file transfer utility that works within HP DeskManager.

PRODUCT SPECIFICATIONS

Terminal Features:

HP 700/92 and HP 2392A terminal emulation
Typeahead buffer
Unlimited configurations
Configurable display memory
80 or 132 columns
Modes: Block, format, character
Character sets: ASCII, ISO-7, Roman 8, line drawing

Additional Reflection 3 Plus Terminal Features:

HP 2393A and HP 2623A emulation
Rubberband line and polygon fill
Interactive mouse and graphics cursor status requests
Linked graphics and mouse cursors
Copy graphics to a printer, the Clipboard, or a MacPaint file

Communications:

Connections: Direct, modem, or Apple's Communications Toolbox
Baud rates: 300 through 56K
Parity: Even, odd, 1's (mark), 0's (space), none
Receive and transmit pacing: XON/XOFF, hardware, or none

Communications Toolbox Connections:

Ethernet cards or other hardware may be required for some communication tools
Tools included: Serial Tool, Modem Tool, AppleTalk ADSP Tool, LAT Tool, MacTCP driver
Telnet Connection from Walker Richer & Quinn
Third-party Telnet and other tools

File Transfer:

Proprietary: HP, VAX/VMS, and UNIX/ULTRIX/HP-UX hosts
Public: KERMIT, XMODEM
Formats: ASCII, binary, MacBinary, HP labels

Command Language:

A library of over 200 commands, settings, and functions
Compatible with DOS and Microsoft Windows versions of Reflection
Variables: 800
Subroutines: Unlimited
Structure: BASIC-like
Execution: From the Command Window, disk file, or desktop
Macintosh extensions: Dialog boxes, user menus
Help for all commands, settings, and functions

Printer Support:

Compatible with all standard printer drivers
Print in any font
HP modes: Log bottom, log top, record mode
Spooling: Intelligent, based on type of print job, or always

Machine Requirements:

Macintosh Plus or higher
Two 800K disk drives, or hard drive
Keyboard support: All Apple keyboards (Extended ADB preferred)
MultiFinder: Required for multitasking
System 7 compatible

Walker Richer & Quinn, Inc. :

2815 Eastlake Ave. E.
Seattle, WA 98102
(206) 324-0407
1-800-872-2829
FAX: (206) 322-8151

European Office:
Zeestraat 55
2518 AA Den Haag
The Netherlands
+31.(0)70.356.09.63
FAX: +31.(0)70.356.12.4-