

RTE-6/VM

Index to Operating System Manual



**HEWLETT
PACKARD**

PRINTING HISTORY

The Printing History below identifies the Edition of this Manual and any Updates that are included. Periodically, Update packages are distributed which contain replacement pages to be merged into the manual, including an updated copy of this Printing History page. Also, the update may contain write-in instructions.

Each reprinting of this manual will incorporate all past Updates, however, no new information will be added. Thus, the reprinted copy will be identical in content to prior printings of the same edition with its user-inserted update information. New editions of this manual will contain new information, as well as all Updates.

To determine what software manual edition and update is compatible with your current software revision code, refer to the appropriate Software Numbering Catalog, Software Product Catalog, or Diagnostic Configurator Manual.

First Edition Dec 1981

NOTICE

The information contained in this document is subject to change without notice.

HEWLETT-PACKARD MAKES NO WARRANTY OF ANY KIND WITH REGARD TO THIS MATERIAL, INCLUDING, BUT NOT LIMITED TO, THE IMPLIED WARRANTIES OF MERCHANTABILITY AND FITNESS FOR A PARTICULAR PURPOSE. Hewlett-Packard shall not be liable for errors contained herein or for incidental or consequential damages in connection with the furnishing, performance or use of this material.

Hewlett-Packard assumes no responsibility for the use or reliability of its software on equipment that is not furnished by Hewlett-Packard.

This document contains proprietary information which is protected by copyright. All rights are reserved. No part of this document may be photocopied, reproduced or translated to another program language without the prior written consent of Hewlett-Packard Company.

HP Computer Museum
www.hpmuseum.net

For research and education purposes only.

Preface

This document provides a cross reference index for the HP 92084A RTE-6/VM Operating System manuals. A documentation map is included to show the manuals needed by the systems users. Typically, these are new users, general system users (programmers, terminal operators, etc.), and the system manager. A quick reference guide is provided in the RTE-6/VM manual set.

Not all manual indices are included in this document. Only those most commonly used and that cross reference is required are provided. The cross reference index is intended to point you to the manual, or manuals, for a particular topic. You may then refer to the table of contents or index of that manual to find the topic of interest. Topics in this document are in the following form:

Topic, <Manual Mnemonic>-<Chapter or Appendix>

Samples: RMPAR, BSP-3, LDR-4, PRM-5, RLIB-4
RN command, TRM-3
:
ROTATE (system macro), MAC-K

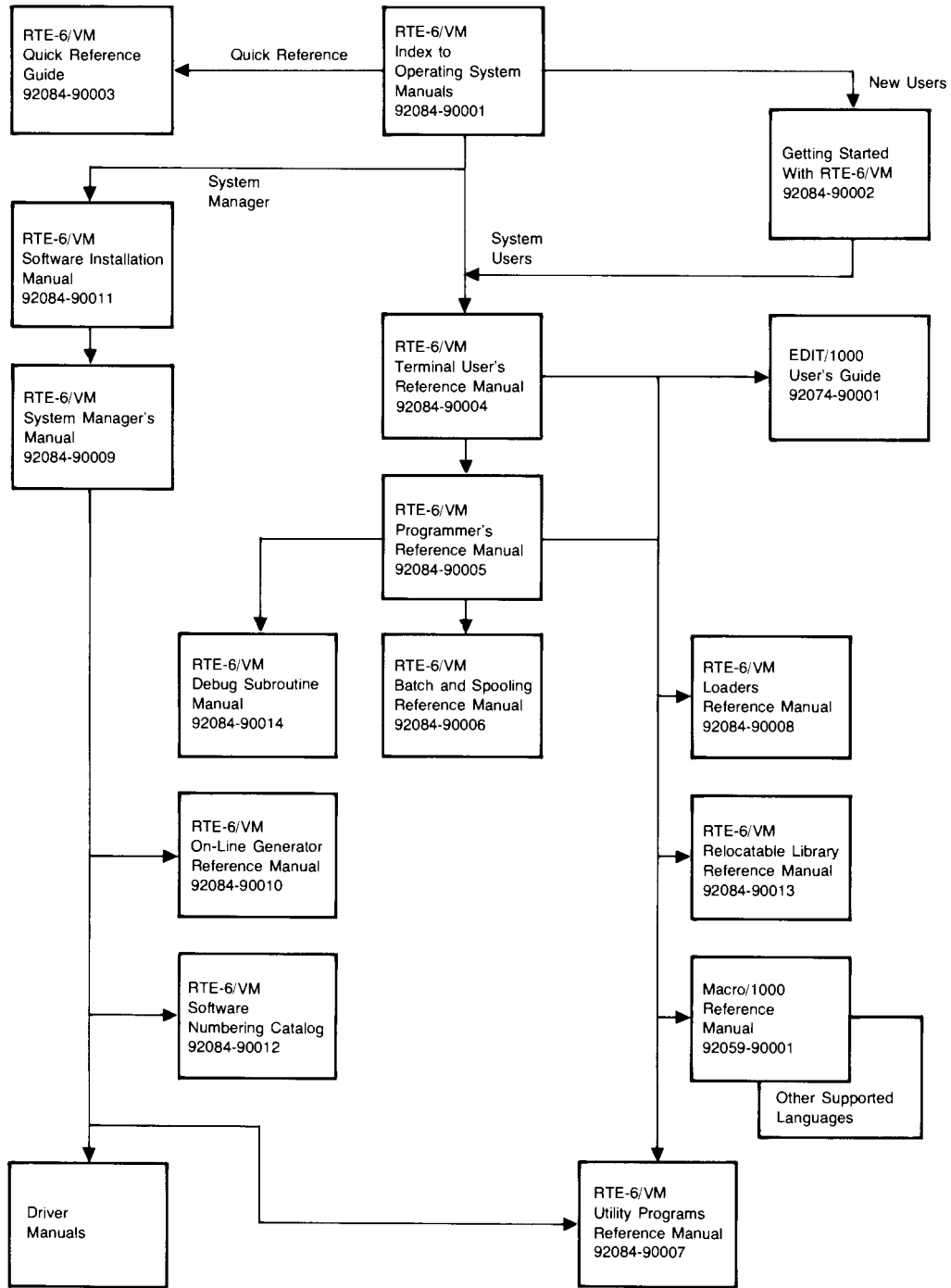
The abbreviations for manuals included in the cross reference index are as follows:

BSP	Batch and Spooling Reference Manual (92084-90006)
LDR	Loaders Reference Manual (92084-90008)
MAC	Macro/1000 Reference Manual (92059-90001)
PRM	Programmer's Reference Manual (92084-90006)
ONG	On-Line Generator Reference Manua (92084-90010)
RLIB	Relocatable Library Reference Manual (92084-90013)
SYSM	System Manager's Reference Manual (92084-90009)
TRM	Terminal User's Referenc Manual (92084-90004)
UTIL	Utility Programs Reference Manual (92084-90007)

A brief description of each of the RTE-6/VM manuals (except the driver and language manuals) is included here. This document contains the following sections:

Documentation Map
Manual Description
Cross Reference Index
Special Symbols
A
B
:
Z

RTE-6/VM Operating System Documentation Map



8100-1

Manual Description

Getting Started With RTE-6/VM
92084-90002

This manual is an introduction to the RTE-6/VM operating system with Session Monitor. It illustrates the ease with which you can do the following:

- * Communicate with the system
- * Create and modify files, using the screen Editor
- * Develop and run programs
- * Execute system commands (or run programs) from a procedure file

This manual should be used as a tutorial guide for the first time user.

RTE-6/VM Terminal User's Reference Manual
92084-90004
Manual MNEMONIC = TRM

This manual describes the scope, format, and utility programs available with the RTE-6/VM operating system. It is intended to be the primary reference source for those performing data entry, file manipulation, program development, and other interactive tasks.

RTE6/VM Programmer's Reference Manual
92084-90005
Manual Mnemonic = PRM

This manual describes the features provided by the RTE-6/VM operating system that allow the user to programmatically use system services and/or control system resources. Detailed descriptions of the calling sequences which invoke system action are included. Examples in FORTRAN-IV and Assembly are also provided.

RTE-6/VM Batch And Spooling Reference Manual
92084-90006
Manual Mnemonic =BSP

This manual describes the uses and requirements of the Batch Spool Monitor subsystem. It is a reference manual for those who wish to use the batch processing and spooling features.

RTE-6/VM Debug Subroutine Manual
92084-90014
Manual Mnemonic = DBG

This manual describes the DBUGR utility program. The DBUGR program is used for debugging programs run on the HP 1000 series computers.

RTE-6/VM Utility Programs Reference Manual
92084-90007
Manual Mnemonic = UTIL



This manual describes the utility programs available as part of the RTE-6/VM operating system. It includes the following utilities:

General System Utilities:	CLOAD	CMD	COMPL	GENIX
	HELP	KEYS	KYDMP	LGTAT
	MERGE	SCOM	WHZAT	
Record Reconfiguration:	OLDRE			
File Copy:	FC			
Cartridge Backup:	READT	WRITT		
On-Line, Off-Line Backup:	PCOPY	PRSTR	PSAVE	
Logical Interchange Format:	LIF			
Disc Formatting:	FORMC	FORMT		
On-Line Driver Replacement:	DRREL	DRRPL		

RTE-6/VM Software Installation Manual
92084-90011

This manual provides the installation procedures for the RTE-6/VM software in the HP 1000 Model 60/65 Computer Systems. It is to be used by the HP Customer Engineer and the System Manager to install the preconfigured primary system.

RTE-6/VM System Manager's Reference Manual
92084-90009
Manual Mnemonic = SYSM

This manual describes the planning, generating, and maintaining of the RTE-6/VM operating system. This manual is to be used in conjunction with the On-Line Generator Reference Manual to provide complete system generation information.

RTE-6/VM On-Line Generator Reference Manual
92084-90010
Manual Mnemonic = ONG

This manual describes in detail the procedures for generating a new RTE-6/VM operating system without shutting down the existing system. Complete examples of each phase and annotated worksheets are provided. It is intended for use by the System Manager and System Programmers who are involved in the design and maintenance of total system configurations.

RTE-6/VM Loaders Reference Manual
92084-90008
Manual Mnemonic = LDR

This manual describes the MLLDR and LOADR loaders and the program segmentation and loading tools, SGMTR, SXREF, and INDXR. It provides reference material for the experienced user as well as descriptive information about the loading process.

RTE-6/VM Relocatable Library Reference Manual
92084-90013
Manual Mnemonic = RLIB

This manual describes the subroutines contained in the following libraries: \$MLIB1, \$MLIB2, and \$6SYLB.

Macro/1000 Reference Manual
92059-90001
Manual Mnemonic = MAC

This manual describes the Macro/1000 Assembly Language for HP 1000 RTE-based operating systems.

EDIT/1000 User's Guide
92074-90001

This manual describes the screen editor program EDIT. It provides a functional description of EDIT, in Chapters 1 and 2. Reference information is also included in Chapter 3. Loading information is contained in Appendix A.

RTE-6/VM Quick Reference Guide
92084-90003

This manual provides a quick reference to RTE-6/VM commands, syntax of selected program commands, system tables, and error summary.

Special Symbols

! abort command, ONG-2
!BCK01, UTIL-6
!BCK02, UTIL-6
!BCK03, UTIL-6
! option, FC, UTIL-4

" " keyword identifier, GENIX, UTIL-2

of blank ID extensions, ONG-2
of blank long ID segments, ONG-2
of blank short ID segments, ONG-2
of I/O classes, ONG-2
of LU mappings, ONG-2
of resource numbers, ONG-2, ONG-3
#COS, RLIB-4
#EXP, RLIB-4
#LOG, RLIB-4
#SIN, RLIB-4

\$ALC, ONG-B
\$ASC6, ONG-B
\$EMA statement, PRM-4
\$EXP, RLIB-4
\$LOG, RLIB-4
\$LOGT, RLIB-4
\$SETP, RLIB-4
\$SQRT, RLIB-4
\$TAN, RLIB-4
\$TRN6, ONG-B

%ABS, RLIB-4
%AN, RLIB-4
%AND, RLIB-4
%ANH, RLIB-4
%BS, RLIB-4
%FIX, RLIB-4
%IGN, RLIB-4
%IN, RLIB-4
%INT, RLIB-4
%LOAT, RLIB-4
%LOG, RLIB-4
%LOGT, RLIB-4
%NT, RLIB-4
%OR, RLIB-4
%OS, RLIB-4
%OT, RLIB-4
%QRT, RLIB-4
%SIGN, RLIB-4
%SSW, RLIB-4
%TAN, RLIB-4
%WRIS, RLIB-4

%WRIT, RLIB-4
%XP, RLIB-4
&text continuation identifier, GENIX, UTIL-2
&.ERROR, MAC-J
&.PCOUNT, MAC-J
&.Q, MAC-5, MAC-J
&.REP, MAC-J
&.RS1, MAC-E, MAC-J
&.RS2, MAC-E, MAC-J

* command, ONG-2
**-command, TRM-3

, command delimiter, UTIL-1

..CCM, RLIB-2
..DCM, RLIB-2
..DLC, RLIB-2
..FCM, RLIB-2
..MAP, RLIB-4
..TCM, RLIB-2
.ABS, RLIB-2
.ATAN, RLIB-2
.ATN2, RLIB-2
.BLE, RLIB-2
.CADD, RLIB-2
.CDBL, RLIB-2
.CDIV, RLIB-2
.CFER, RLIB-2
.CHEB, RLIB-2
.CINT, RLIB-2
.CMPY, RLIB-2
.CMRS, RLIB-2
.CSUB, RLIB-2
.CTBL, RLIB-2
.CTOI, RLIB-2
.DADS, RLIB-3
.DCO, RLIB-3
.DCPX, RLIB-2
.DDE, RLIB-3
.DDI, RLIB-3
.DDS, RLIB-3
.DFER, RLIB-2
.DIN, RLIB-3
.DINT, RLIB-2
.DIS, RLIB-3
.DIV, RLIB-2
.DLD, RLIB-2
.DMP, RLIB-3
.DNG, RLIB-3
.DST, RLIB-2
.DTOD, RLIB-2
.DTOI, RLIB-2

.DTOR, RLIB-2
.EMIO subroutine, PRM-B
.ENTC, RLIB-4
.ENTR, RLIB-4
.ESEG Subroutine, PRM-B
.EXP, RLIB-2
.FDV, RLIB-2
.FIXD, RLIB-3
.FLTD, RLIB-3
.FLUN, RLIB-2
.FMP, RLIB-2
.FMUI, .FMUO, .FMUP, RLIB-4
.FMUR, RLIB-4
.FPWR, RLIB-2
.GOTO, RLIB-4
.ICPX, RLIB-2
.IDBL, RLIB-2
.IENT, RLIB-2
.ILB, RLIB-2
.IMAP subroutine, PRM-B
.IRES Subroutine, PRM-B
.ITBL, RLIB-2
.ITOI, RLIB-2
.JMAP subroutine, PRM-B
.JRES Subroutine, PRM-B
.LBP, .LBPR Subroutine, PRM-B
.LOG, RLIB-2
.LOGO, RLIB-2
.LPX, .LPXR Subroutine, PRM-B
.MAC., RLIB-2
.MANT, RLIB-2
.MAP, RLIB-4
.MOD, RLIB-2
.MPY, RLIB-2
.MXMN, RLIB-2
.NGL, RLIB-2
.OPSY, RLIB-4
.PACK, RLIB-2
.PCAD, RLIB-4
.PWR2, RLIB-2
.RCNG, RLIB-4
.RTOD, RLIB-2
.RTOI, RLIB-2
.RTOR, RLIB-2
.RTOT, RLIB-2
.SBT, RLIB-2
.SIGN, RLIB-2
.SNCS, RLIB-2,
.SQRT, RLIB-2
.TAN, RLIB-2
.TANH, RLIB-2
.TAPE, RLIB-4
.TCPX, RLIB-2

```

.TENT, RLIB-2
.TFTD, RLIB-3
.TFXD, RLIB-3
.TINT, RLIB-2
.TMTH, RLIB-2
.TPWR, RLIB-2
.TSCS, RLIB-2
.TTOI, RLIB-2
.TTOR, RLIB-2
.TTOT, RLIB-2
.XCOM, RLIB-2
.XDIV, RLIB-2
.XFER, RLIB-2
.XFTD, RLIB-3
.XFXD, RLIB-3
.XMPY, RLIB-2
.XPAK, RLIB-2
.YINT, RLIB-2

/ interactive prompt, UTIL-2
/ATLG, RLIB-4
/CMRT, RLIB-4
/COS, RLIB-4
/EXP, RLIB-4
/EXTH, RLIB-4
/LOG, RLIB-4
/LOGO, RLIB-4
/SIN, RLIB-4
/SQRT, RLIB-4
/TAN, RLIB-4
/TINT, RLIB-4

7261A card reader driver DVR15, SYSM-4
7900
    disc subchannel definition, UTIL-6
    subchannel initialization, SYSM-5
    switches, SYSM-5

9-track tape records, UTIL-6

:AND: (logical AND), MAC-4
:ASH:, MAC-4
:L: (length attribute), MAC-4
:LSH:, MAC-4
:MOD:, MAC-4
:NOT:, MAC-4
:OP:, MAC-5
:OR: (logical OR), MAC-4
:ROT:, MAC-4
:S: (substring attribute), MAC-4
:T: (type attribute), MAC-4
:UC: (upper case attribute), MAC-4

```

??, BSP-4
??-command, TRM-3

SGLD, LDR-9

[] optional parameters, UTIL-1

{}, namr list delimiters, FC, UTIL-4

A

AB
 (abort), LDR-5
 - abort job, BSP-2, BSP-4
 command, TRM-2
abnormal termination messages, SYSM-5
abort
 command (!), ONG-2
 executing batch job, TRM-2
 Group command, FC, UTIL-4
aborting,
 INDXR, LDR-6
 LOADR, LDR-4
 MLLDR, LDR-4
 SGMTR, LDR-6
 SXREF, LDR-6
ABREG subroutine, PRM-2
ABREG, RLIB-4
ABS,
 MAC-4, MAC-B, MAC-C
 RLIB-2
absolute
 assembly, MAC-E
 code, MAC-1
 expressions, MAC-2
 program, MAC-2, MAC-4
 record formats, PRM-I
 space, MAC-4
 tape format, PRM-I
 time mode, PRM-2
 value, MAC-4
AC command, TRM-3
account
 file, directory, SYSM-8
 file, header, SYSM-8
 file, TRM-2
 system maintaining, SYSM-8
 system planning, SYSM-3
 system, SYSM-3
ACCTS
 commands, SYSM-8
 program operation, SYSM-8

ACCTS,
 error message, SYSM-8
 general commands, SYSM-8
 help file entries, SYSM-8
 running, SYSM-7
 use of, SYSM-3
active
 program status summary, UTIL-2
 session table, SYSM-8
actual macro parameters, MAC-5
ADA, MAC-3, MAC-B, MAC-C
ADB, MAC-3, MAC-B, MAC-C
ADD (system macro), MAC-K
adding new accounts, SYSM-8
addition, MAC-2
address
 and symbol definition, MAC-B
 definition instructions, MAC-4, MAC-B
 pointers, DBG-2
 range, DBG-5
 search, effective, DBG-5
 translation, PRM-F
address/unit/platter specification, SYSM-5
address:unit:volume specification, SYSM-5
ADX, MAC-3, MAC-B, MAC-C
ADY, MAC-3, MAC-B, MAC-C
AELSE, MAC-4, MAC-B, MAC-C
AELSEIF, MAC-4, MAC-B, MAC-C
AENDIF, MAC-4, MAC-B, MAC-C
AENDWHILE, MAC-4, MAC-B, MAC-C
AG command, TRM-4
AG command, FC, UTIL-4
AIF, MAC-4, MAC-B, MAC-C
AIMAG, RLIB-2
AINT, RLIB-2
AL option, WHZAT, UTIL-2
ALF, MAC-3, MAC-B, MAC-C
alias, MAC-4
ALLOC instruction translation, UTIL-3
ALLOC, MAC-4, MAC-B, MAC-C
allocate
 cartridge, TRM-3
 class number, CLRQ, PRM-5
ALLOCATE, LDR-4
ALOG, RLIB-2
ALOGT, RLIB-2
alphanumeric
 ASCII printout, DBG-2
 mode, DBG-2
ALR, MAC-3, MAC-B, MAC-C
ALS, MAC-3, MAC-B, MAC-C
alter-skip group, MAC-3, MAC-B
AMOD, RLIB-2

AN command, TRM-3
 AND, MAC-3, MAC-B, MAC-C
 APOSN FMP call, PRM-3
 appending files, MERGE, UTIL-2
 arithmetic
 negation, MAC-4
 operators, MAC-2, MAC-4
 ARS, MAC-3, MAC-B, MAC-C
 AS
 (assign), LDR-5
 command, TRM-4
 ASC, MAC-4, MAC-B, MAC-C
 ASCII
 characters, MAC-4
 CRN, abbreviated form, FC, UTIL-4
 headers, structure, UTIL-6
 parse subroutine, \$PARS, RLIB-5
 parse subroutine, PARSE, RLIB-5
 ASHIFT (system macro), MAC-K
 ASL, MAC-3, MAC-B, MAC-C
 ASMB assembly language, MAC-1
 ASR, MAC-3, MAC-B, MAC-C
 assembler
 control instructions, MAC-4, MAC-B
 instructions (see pseudo ops), MAC-1, MAC-4
 assembly listing control instructions, MAC-4
 Assembly, LDR-9
 assembly-time
 arrays, MAC-4
 Variable Declaration, MAC-B
 variable, local, MAC-4
 variables (ATVs), MAC-1, MAC-2, MAC-4
 variables, global, MAC-4
 assign
 partition, TRM-4
 program partitions, ONG-2, ONG-3
 assigning
 a symbol to an address just printed, DBG-2
 shareable EMA partitions, SYSM-10
 assignment, priority, BSP-2
 asterisk, MAC-2
 ATAN, RLIB-2
 ATAN2, RLIB-2
 attributes, BSP-2
 autoboot, SYSM-5
 autoboot specification, SYSM-5
 automatic
 buffering, PRM-1
 output buffering, SYSM-4, TRM-4
 track switching, PRM-2
 auxiliary
 cartridges, changing, SYSM-6
 disc, ONG-3

disc subchannel, ONG-2, ONG-3
system cartridges, PRM-3
system subchannel, used, SYSM-3
AWHILE, MAC-4, MAC-B, MAC-C

B

B option, FC, UTIL-4
background
COMMON, ONG-B, PRM-1
partitions, TRM-1
program, LDR-2, TRM-1
programs summary, UTIL-2
backing
Store file, LDR-2, PRM-4
backslash, MAC-2
backup, disc, TRM-1
backward compatibility, MAC-1, MAC-L
bad
pages, excluding, SYSM-10
track information, SYSM-5
tracks, TRM-3
base page, LDR-4
base
page address, high, SYSM-B
page and logical memory, PRM-F
page fence, MAC-3
page link overflow, LDR-6, LDR-8
page links, LDR-2, LDR-4, LDR-6, LDR-7, LDR-E, PRM-1, UTIL-9
page mapping and organization, ONG-B
page relocatable space, MAC-1, MAC-4
BASIC/1000D, PRM-1
batch
and spooling FMGR errors, BSP-A
checking, BSP-3
device, job entered from, BSP-20
environment, BSP-2
input checking flag, BSP-3
job, BSP-1, BSP-2
job processing, TRM-1
job, abort execution, TRM-2
mode, SYSM-5
processing, BSP-1, BSP-2
setup, BSP-2
spooling, BSP-2
batch-spool
error codes, BSP-A
system components, BSP-1
BF, backspace tape, UTIL-6

BG
 - see Background program
 common, ONG-2
 disc-residents, ONG-2
 memory lock, ONG-2, ONG-3
 binary
 codes, MAC-D
 to ASCII conversion subroutines, RLIB-5
 bit
 bucket, TRM-4
 processing, MAC-3
 BL command, TRM-4
 blank
 COMMON, see COMMON
 ID segments, ONG-3
 sign, DBG-A
 BLF, MAC-3, MAC-B, MAC-C
 block
 data subprogram, LDR-6
 mode operation of DBUGR, DBG-D
 block, TRM-3
 blocks remaining, ONG-2
 BLR, MAC-3, MAC-B, MAC-C
 BLS, MAC-3, MAC-B, MAC-C
 body of the macro definition, MAC-5
 boot
 extension execution, SYSM-6
 extensions, ONG-2
 file namr, ONG-2, ONG-3
 loaders and boot extension, SYSM-6
 boot-up
 and reconfiguration halts, SYSM-10
 procedures, standard, SYSM-6
 bootstrap loader, SYSM-6
 BR command, TRM-4
 break
 command (BR), ONG-2
 flag, TRM-4
 mode processors, SYSM-3
 break-mode
 command summary, TRM-2 TRM-4
 command, FL, TRM-4
 command, HE, TRM-4
 command, processing, TRM-4
 command, structure, TRM-4
 command, TRM-4
 errors, TRM-A
 prompt, TRM-2 TRM-4
 breakpoint MLLDR, setting, DBG-6
 breakpoint, LDR-2
 breakpoints and program control, DBG-C
 breakpoints, through path switches, DBG-6
 Brief status-display format option, FC, UTIL-4

brother node, LDR-3
 BRS, MAC-3, MAC-B, MAC-C
 BSS, MAC-4, MAC-B, MAC-C
 buffer
 conversion subroutine, RLIB-5
 flag, clear, BSP-3
 flag, set, BSP-3
 limits, ONG-2, ONG-3, TRM-4
 passage, father/son, PRM-2
 buffered
 and unbuffered input/output, TRM-4
 output, ONG-2
 buffering an I/O controller, TRM-4
 buffering,
 automatic, PRM-1
 I/O, PRM-1
 buffers,
 packing (DCB), PRM-3
 user, PRM-3
 BYT, MAC-4, MAC-B, MAC-C
 byte
 processing, MAC-2, MAC-4, MAC-4

C

C option, FC, UTIL-4
 CA command, TRM-3
 CABS, RLIB-2
 calculate globals, TRM-3
 CALL
 (system macro), MAC-K
 subroutine operations, MAC-K
 callable
 subroutines, FORTRAN 4X, RLIB-A
 subroutines, FORTRAN 77, RLIB-A
 subroutines, Pascal, RLIB-A
 calling
 FORMC, UTIL-8
 FORMT, UTIL-8
 library subroutines, RLIB-1
 macros, MAC-5
 PCOPY interactively, UTIL-6
 PRSTR interactively, UTIL-6
 PSAVE interactively, UTIL-6
 RE interactively, UTIL-6
 READT, UTIL-5
 SA interactively, UTIL-6
 WRITT, UTIL-5
 capability, BSP-2
 capability
 level, TRM-2
 level for privileged GASP commands, BSP-5

cartridge, TRM-3
 cartridge
 allocation, FC, UTIL-4
 backup utility programs, UTIL-5
 directory, PRM-3, TRM-3
 directory format, PRM-G, SYSM-D, TRM-C
 list, TRM-3
 List commands, FC, UTIL-4
 lock option, FC, UTIL-4
 open option, FC, UTIL-4
 pool, spare, SYSM-3, SYSM-8
 Reference Number (CRN), PRM-3, TRM-3
 save, UTIL-5
 types, TRM-3
 cartridges initialization, PRM-3, TRM-3
 cartridges,
 access, SYSM-3, TRM-3
 allocate, TRM-3
 auxiliary system, PRM-3
 changing requirements, SYSM-3
 disc, PRM-1
 dismount, TRM-3
 dismounting considerations, SYSM-3
 exchange, SYSM-5
 global, PRM-3
 group, PRM-3, SYSM-3, TRM-2, TRM-3
 in the session environment, PRM-3
 management, SYSM-3
 mount, TRM-3
 mounting considerations, SYSM-3
 non-session, PRM-3, SYSM-2, SYSM-3
 organization, PRM-3, TRM-3
 ownership, TRM-2
 pack, TRM-3
 pool, PRM-1, TRM-3
 private, PRM-1, PRM-3, SYSM-3, TRM-2 TRM-3
 removable, TRM-3
 requirements worksheet, SYSM-3
 size requirements, SYSM-3
 special purpose, SYSM-3
 system, PRM1, PRM-3, SYSM-3, TRM-2, TRM-3
 system global requirements, SYSM-3
 user removable disc media, SYSM-3
 user traded, SYSM-3
 CAX, MAC-3, MAC-B, MAC-C
 CAY, MAC-3, MAC-B, MAC-C
 CBS, MAC-3, MAC-B, MAC-C
 CBT, MAC-3, MAC-B, MAC-C
 CBX, MAC-3, MAC-B, MAC-C
 CBY, MAC-3, MAC-B, MAC-C
 CCA, MAC-3, MAC-B, MAC-C
 CCB, MAC-3, MAC-B, MAC-C
 CCE, MAC-3, MAC-B, MAC-C



CEXP, RLIB-2
 CF, name comment file, FC, UTIL-4
 CGLOBAL, MAC-4, MAC-B, MAC-C
 change
 BG common, ONG-2, ONG-3
 driver part, ONG-2, ONG-3
 ents, ONG-2
 list device, TRM-3
 log device, TRM-3
 purge to save, BSP-3
 record position, BSP-3
 RT common, ONG-2, ONG-3
 save to purge, BSP-3
 changing
 auxiliary cartridges, SYSM-6
 partition definitions, SYSM-10
 program partition assignments, SYSM-10
 the radix of numeric printout, DBG-2
 characteristics
 of program types, LDR-2
 of spool file, BSP-2
 circular
 call chain - see also recursion
 call chain, LDR-3
 scheduling, TRM-1
 CJ - change job status, BSP-4
 CL
 command, FC, UTIL-4
 command, TRM-3
 CLA, MAC-3, MAC-C
 CLAL Command, FC, UTIL-4
 class
 Control, EXEC 19, PRM-2
 Get, EXEC 21, PRM-2
 I/O, ONG-2, PRM-1
 I/O applications, PRM-5
 I/O EXEC calls, PRM-2
 I/O flush - CLRQ, PRM-5
 I/O multiple terminals, PRM-5
 I/O operation, PRM-2
 I/O requests, PRM-2
 I/O terms, class number, PRM-2
 I/O terms, class request, PRM-2
 I/O terms, class, PRM-2
 I/O terms, completed class queue, PRM-2
 I/O terms, pending class requests, PRM-2
 number allocation - CLRQ, PRM-5
 number allocation CLRQ subroutine, PRM-2
 number, PRM-2 ,
 ownership, PRM-5 ,
 Read, EXEC 17, PRM-2
 Write, EXEC 18, PRM-2
 Write/Read, EXEC 20, PRM-2

class, PRM-2
CLB, MAC-3, MAC-B, MAC-C
CLC, MAC-3, MAC-B, MAC-C
CLCC, MAC-B, MAC-C
CLE, MAC-3, MAC-B, MAC-B, MAC-C
clear
 buffer flag, BSP-3
 destination disc option, FC, UTIL-4
 flag indicator, MAC-L
 or set memory, DBG-5
CLEARBIT (system macro), MAC-K
CLF, MAC-3, MAC-B, MAC-C
CLO, MAC-3, MAC-B, MAC-C
CLOAD, PRM-1, TRM-1, UTIL-2
CLOCAL, MAC-4, MAC-B, MAC-C
CLOG, RLIB-2
close
 and queue for outspooling, BSP-3
 FMP call, PRM-3
CLRIO, RLIB-4
CLRQ subroutine - Class I/O Management, PRM-5
CLRQ,
 class management parameters, RLIB-5
 class management request, RLIB-5
CLSVM subroutine, PRM-4
CMA, MAC-3, MAC-B, MAC-C
CMB, MAC-3, MAC-B, MAC-C
CMD, PRM-1, SYSM-6, UTIL-2
CME, MAC-3, MAC-B, MAC-C
CMPLX, RLIB-2
CMW, MAC-3, MAC-B, MAC-C
CN command, TRM-3
CO
 command examples, UTIL-4
 command, disc-to-disc copy, LIF, UTIL-7
 command, TRM-3
code input, LDR-9
COL, MAC-4, MAC-B, MAC-C
colon prompt, BSP-2
COM, MAC-C, MAC-L
command
 capability table, SYSM-E
 file, LDR-3, LDR-4, LDR-6
 file, sample, LDR-3, LDR-6, LDR-D
 file, shortening, LDR-6
 file, syntax checking (SXREF), LDR-6
 file, writing, LDR-3
 file listing (SXREF), LDR-6
 out-of-sequence errors, UTIL-4
 set summary, UTIL-4
 stacking, TRM-3
 string passage, PRM-J
 structure, TRM-3

- summary function, UTIL-4
- summary, LDR-4
- syntax, parameter errors, UTIL-4
- syntax, UTIL-1
- command, capability levels, TRM-2
- commands
 - and command file, MLS programs, LDR-4
 - and command file, non-segmented programs, LDR-4
- commands,
 - INDXR, LDR-6
 - MLLDR and LOADR, LDR-5, LDR-9
- comment
 - (*), LDR-5
 - field, MAC-1, MAC-2
 - file record length, FC, UTIL-4
- comments
 - command, ONG-2
 - in macro definitions, MAC-5
- comments, command, TRM-3
- common
 - applications, SYSM-3
 - files, SYSM-3
 - peripherals, SYSM-3
 - relocatable space, MAC-1, MAC-4
- COMMON,
 - areas, PRM-1
 - background, PRM-1
 - blank, LDR-2
 - block types and sizes (SGMTR), LDR-6
 - EMA, LDR-F
 - improper use of, LDR-8
 - initialization, LDR-3
 - labeled, LDR-6, PRM-4
 - local, LDR-2, PRM-1
 - named SAVE, LDR-4
 - named, LDR-4
 - ordinary, LDR-6
 - parameters, PRM-3
 - real-time, PRM-1
 - requirements for SGMTR, LDR-6
 - reverse, LDR-2
 - SAVE, LDR-F
 - summary of types, LDR-F
 - system, LDR-2
 - type and size mismatches, LDR-6
 - unlabeled, LDR-2
- comparison operators, MAC-4
- compilation considerations, LDR-8
- compile
 - and load utility CLOAD, UTIL-2
 - utility, COMPL, UTIL-2
- COMPL, KPRM-1, TRM-1, UTIL-2
- completed class queue, PRM-2 , PRM-2

completion
 message, LDR-4, LDR-9
 of GASP initialization, BSP-5
 concatenating files MERGE, UTIL-2
 concatenation, MAC-4
 conditional
 assembly, MAC-1, MAC-4, MAC-B, MAC-B
 breakpoint, DBG-6
 skip, TRM-3
 configuration,
 destination I/O, SYSM-5
 destination, SYSM-5
 device inputs, SYSM-4
 discs, SYSM-A
 configuration commands, FC, UTIL-4
 configuration table, PRM-H, TRM-C, SYSM-3, SYSM-8, SYSM-C
 configurator
 error messages, SYSM-10
 halts and error messages, SYSM-10
 program, SYSM-10
 scheduling from bootstrap loader, SYSM-10
 scheduling from disc loader ROM, SYSM-10
 CONJG, RLIB-2
 constant definition instructions, MAC-4, MAC-B
 contents of memory, DBG-3
 control
 characters, GENIX, UTIL-2
 statement override, UTIL-2
 statement, MAC-1, MAC-5, MAC-E, MAC-L
 terminal, TRM-3
 controller select code, ONG-2, ONG-3
 controls, DBG-1, DBG-6
 change the contents of memory, DBG-3
 examine memory and set the location counter, DBG-3
 memory/location changes, DBG-3
 temporarily change to the print mode, DBG-3
 conventions followed in the text, DBG-1
 CONWD parameter, BSP-2
 COpy
 command options, UTIL-4
 command, FC, UTIL-4
 disc files between cartridges, TRM-3
 operation, speeding up, TRM-3
 operation, terminating, TRM-3
 status messages, FC, UTIL-4
 COS see .SNCS, RLIB-2
 CPA, MAC-3, MAC-B, MAC-C
 CPB, MAC-3, MAC-B, MAC-C
 CR command, TRM-3
 CREAT call, PRM-3

create
 a disc file, TRM-3
 a non-disc file, TRM-3
 keyset, UTIL-2
 creating
 a dummy driver, UTIL-9
 macro libraries, MAC-5
 the MLS tree, LDR-3
 CRETS call, PRM-3
 CREVM subroutine, PRM-4
 cross
 reference table, MAC-1
 referencer, see SXREF
 CS
 change spool status, BSP-2, BSP-4
 command, TRM-3
 CS80
 cartridge tape handling, UTIL-6
 disc configuration, SYSM-4
 disc driver, DVM33, SYSM-4
 disc maintenance utility FORMC, UTIL-8
 disc subchannel definition, UTIL-6
 disc, SYSM-5
 pushbutton format, UTIL-6
 switch, SYSM-5
 CSET, MAC-4, MAC-B, MAC-C
 CSNCS, RLIB-2
 CSQRT, RLIB-2
 CT command, TRM-3
 CTD,
 block, UTIL-8
 cartridge save, UTIL-6
 disc cache, UTIL-8
 tape records, UTIL-6
 CTD tape maintenance utility FORMC, UTIL-8
 CTRL/D, BSP-2
 current
 node, LDR-3, LDR-4
 page links, LDR-2, LDR-3, LDR-4, LDR-E
 time subroutine FTIME, RLIB-5
 CXA, MAC-3, MAC-B, MAC-C
 CXB, MAC-3, MAC-B, MAC-C
 CYA, MAC-3, MAC-B, MAC-C
 CYB, MAC-3, MAC-B, MAC-C
 cylinder, TRM-3

D

D option, FC, UTIL-4
 D.RTR, BSP-3, PRM-3
 DA - deallocate spooling, BSP-4
 DABS, RLIB-2

data
 block, UTIL-A
 considerations, LDR-3
 Control Block (DCB), PRM-3, PRM-G, TRM-3
 instruction translation, UTIL-3
 reference, LDR-6, LDR-8, LDR-9
 structures, UTIL-6
 transfer, PRM-3
 verification, on-line physical backup, UTIL-6
 DATAN, RLIB-2
 DATN2, RLIB-2
 DBL instruction translation, UTIL-3
 DBL, MAC-2, MAC-3, MAC-4, MAC-B, MAC-C
 DBLE, RLIB-2
 DBR, MAC-2, MAC-3, MAC-4, MAC-B, MAC-C
 DBUGR, PRM-1, TRM-1
 DBUGR,
 at a glance, DBG-C
 loading and using, DBG-1
 size, DBG-1
 DC command, TRM-3
 DCB and directory formats, SYSM-D
 DCOS, RLIB-2
 DCPC (dual channel port controller), PRM-1
 DD, list driver configuration command, UTIL-9
 DDEF, MAC-2, MAC-4, MAC-B, MAC-C
 DDINT, RLIB-2
 DE command, FC, UTIL-4
 DE, list EQT entries command, UTIL-9
 deadlock situations, UTIL-2
 deadly embrace, PRM-5
 DEBUG instruction translation, UTIL-3
 debugger, LDR-1, LDR-3
 force load, LDR-4
 interface with MLLDR, LDR-2
 DEC, MAC-4, MAC-B, MAC-C
 decimal
 addition and subtraction, DBG-A
 constants, MAC-4
 integer, MAC-4
 to octal conversion, DBG-A
 declaring
 a shareable EMA, PRM-4
 extended memory area (EMA), PRM-4
 MAC-assemblytime variables, MAC-4
 VMA array, PRM-4
 DEF, MAC-2, MAC-4, MAC-B, MAC-C

default
 command, FC, UTIL-4
 macro parameters, MAC-5
 defining
 ICD track map table, SYSM-A
 MAC disc track map table, SYSM-A
 symbolic addresses in DBUGR, DBG-2
 deleting
 permanent programs, LDR-2
 symbols from the symbol table, DBG-2
 deletion, commands, LDR-2
 demand-paged virtual memory, TRM-1
 depth, LDR-3
 descriptions of system macros, MAC-K
 destination
 disc handling, UTIL-4
 file, MAC-E
 LU, BSP-5
 destination,
 I/O configuration, SYSM-5
 system, SYSM-5
 determining user requirements, SYSM-2
 Device
 Reference Table (DRT), BSP-2, ONG-2, ONG-3, PRM-2 , PRM-E
 time-out, PRM-1, TRM-4
 device, ONG-2
 devices,
 and interface cards, SYSM-4
 configuration inputs, SYSM-4
 control, SYSM-9
 DEX, MAC-4, MAC-B, MAC-C
 DEXP, RLIB-2
 DEY, MAC-4, MAC-B, MAC-C
 DI (display undefined externals), LDR-5
 DI, list Interrupt Table command, UTIL-9
 DIM, RLIB-2
 directories, TRM-3
 directory
 entry, type 0 files, PRM-G
 formats, SYSM-D
 List command, FC, UTIL-4
 list, TRM-3
 disc
 - see also cartridges, SYSM-3
 allocation error messages, PRM-A
 backup utilities, TRM-1
 backup utilities, compatibility, UTIL-6
 cartridge - see cartridges, SYSM-3
 cartridge organization, TRM-3
 cartridges, PRM-1
 configuration, CS80, SYSM-4
 configuration, HP 7905, SYSM-4
 configuration, HP 7906 (H), SYSM-4

configuration, HP 7920 (H), SYSM-4
configuration, HP 7925 (H), SYSM-4
configuration, HP 9895, SYSM-4
configuration, SYSM-4
data I/O errors, UTIL-4
data verification, UTIL-6
definition record, UTIL-6
driver DVA32, SYSM-4
driver DVM33, SYSM-4
driver DVR32, SYSM-4
driver DVR33, SYSM-4
drives, compatibility, UTIL-6
errors, PRM-3, TRM-3
file directory, PRM-G
file location, TRM-3
file record formats, I-11
formatting utilities, UTIL-8
formatting, FORMC, UTIL-8
limit, SYSM-3, SYSM-8
loader ROM, SYSM-6
LU specification, SYSM-5
nodes, LDR-3, LDR-6, LDR-7, LDR-8
parity error (track error), PRM-A
parity errors, SYSM-A
planning, SYSM-3, SYSM-4
read verification, FC, UTIL-4
read/write subroutine BINRY, RLIB-5
select code specification, SYSM-5
structure planning, SYSM-4
unit protect switch, UTIL-6
write verification, FC, UTIL-4
disc-caching, UTIL-6
disc-resident
 nodes, and memory-resident nodes, mixed, LDR-3
 programs, TRM-1
disc-resident, programs, ONG-B
disc-to-disc copy (CO), UTIL-6
disc-to-tape copy verify errors, FC, UTIL-4
discs, preformatted, UTIL-8
dismount cartridge, TRM-3
DISP6, ONG-B
dispatching errors, PRM-A
dispatching, PRM-1
display
 command, ONG-2
 messages, TRM-3
 parameters, TRM-3
 session LU information, TRM-3 TRM-4
 undefs,tr, ONG-2
 virtual memory size, TRM-4
 working set size, TRM-4
displaying account information, SYSM-8
disposition flags, BSP-3

DISPX, ONG-B
DIV, MAC-3, MAC-B, MAC-C
DJ - display job status, BSP-4
DJP, MAC-3, MAC-B, MAC-C
DJS, MAC-3, MAC-B, MAC-C
DL - directory list command, LIF, UTIL-7
DL command, FC, UTIL-4
DL command, TRM-3
DLD, MAC-3, MAC-B, MAC-C
DLOG, RLIB-2
DLOGT, RLIB-2
DM error, PRM-A
DMOD, RLIB-2
DN command, TRM-4
down an I/O controller or device, TRM-4
DP command, TRM-3
DPOLY, RLIB-2
drive protect switch, UTIL-6
driver
 installation, UTIL-9
 mapping table (DMT), PRM-E
 partition number, UTIL-9
 partition overflow, ONG-3
 partition, PRM-1
 partitions, ONG-B
 relocation utility (DRREL), UTIL-9
 replacement utility (DRRPL), UTIL-9
 timeout, UTIL-8
drivers,
 creating dummy, UTIL-9
 finding space for, UTIL-9
 overlying existing, UTIL-9
DRREL
 on-line driver replacement utility, PRM-1
 command summary list format, UTIL-9
 driver relocation utility, UTIL-9
DRT (Device Reference Table), UTIL-8
DS - display spools, BSP-4
DSIGN, RLIB-2
DSIN, RLIB-2
DSQRT, RLIB-2
DST, MAC-3, MAC-B, MAC-C
DSX, MAC-3, MAC-B, MAC-C
DSY, MAC-3, MAC-B, MAC-C
DS[AL:], BSP-4
DTAN, RLIB-2
DTANH, RLIB-2
DU command, TRM-3
dual channel port controller (DCPC), PRM-1
dumping tables and patches, DBG-4
dumping, DBG-C

Duplicate

- file replace option, FC, UTIL-4
- program name, LDR-4
- duplication of modules, LDR-3, LDR-6, LDR-8
- DVA12, line printer driver, SYSM-4
- DVA13, TV interface driver, SYSM-4
- DVA32, disc driver, SYSM-4
- DVA37, HP-IB interface driver, SYSM-4
- DVB12, line printer driver, SYSM-4
- DVM33, disc driver, SYSM-4
- DVR01, paper tape reader driver, SYSM-4
- DVR02, paper tape punch driver, SYSM-4
- DVR12 (12B), BSP-3
- DVR12, line printer driver, SYSM-4
- DVR23, magnetic tape driver, SYSM-4
- DVR32,
 - disc driver, SYSM-4
 - lock/unlock function call, SYSM-A
- DVR33, disc driver, SYSM-4
- DVS43, BSP-1
- dynamic
 - buffer area - see also SZ command
 - buffer area, LDR-2, LDR-7, LDR-8
 - mapping system, MAC-3, PRM-1
 - mapping system instructions, MAC-3, MAC-B
 - mapping violations, PRM-A



E

- E option, FC, UTIL-4
- EAPOS FMP call, PRM-3
- EB - see Extended Background
- EC (echo commands to list output), LDR-4, LDR-5
- EC, echo command, FC, UTIL-4
- echo command default, FC, UTIL-4
- echo, ONG-2, ONG-3
- ECLOS FMP call, PRM-3
- ECREA call, PRM-3
- EG command, FC, UTIL-4
- EIOSZ subroutine, PRM-4
- ELA, MAC-3, MAC-B, MAC-C
- ELB, MAC-3, MAC-B, MAC-C
- Eliminate extents option, FC, UTIL-4
- ELOCF FMP call, PRM-3
- ELSE (system macro), MAC-K
- ELSEIF (system macro), MAC-K
- EMA
 - and memory structure, PRM-4
 - instruction translation, UTIL-3
 - programming, MAC-4
 - relocatable space, MAC-1, MAC-2, MAC-4

EMA, LDR-7, LDR-F, MAC-4, MAC-C, MAC-L, PRM-4
 (See Extended Memory Area), TRM-1
 and Shareable EMA, LDR-2
 labeled COMMON, LDR-6
 size, LDR-2
 EMAST subroutine, PRM-4
 empty module, LDR-4
 EN command, TRM-2
 EN, EX, or /E (end of command input), LDR-5
 enable
 system console to be session terminal, TRM-2
 terminals, TRM-3
 End
 Group command, FC, UTIL-4
 instruction translation, UTIL-3
 of data, BSP-2
 of partition, LDR-7
 of program, LDR-7
 record, LDR-3, LDR-6
 statement, LDR-3, LDR-6
 END, MAC-1, MAC-4, MAC-B, MAC-C
 end-of-file mark, TRM-3
 end-of-file processing, BSP-2
 ENDIF (system macro), MAC-K
 ENDMAC, MAC-5, MAC-B, MAC-C
 ENDREP, MAC-4, MAC-B, MAC-C
 ENT, MAC-4, MAC-B, MAC-C
 ENT
 instruction translation, UTIL-3
 record, LDR-6
 enter outspool destination LU, BSP-5
 ENTIE, RLIB-2
 ENTIX, RLIB-2
 ENTRY
 (system macro), MAC-K
 point, FORTRAN, LDR-6
 point, LDR-3
 point, MACRO, LDR-6
 point, main, LDR-6
 point, non-main, LDR-6
 point, Pascal, LDR-6
 subroutine operations, MAC-K
 EPOSN FMP call, PRM-3
 EQ command, TRM-4
 EQLU, RLIB-5
 EQT entry, BSP-2
 EQU, MAC-4, MAC-B, MAC-C
 equality search, DBG-5
 Equipment Table (EQT), BSP-2, PRM-1, PRM-2, PRM-E, TRM-4
 Equipment Table (EQT) Entry, assignments, ONG-3, SYSM-4
 ER0.R, RLIB-4
 ERA, MAC-3, MAC-B, MAC-C
 ERB, MAC-3, MAC-B, MAC-C

EREAD FMP call, PRM-3
 ERRO, RLIB-4
 error
 checking LIF, level, UTIL-7
 checking LIF, override, UTIL-7
 code IO22, BSP-3
 conditions, SWTCH, SYSM-5
 handling, ONG-3
 messages, ACCTS and LGON, SYSM-8
 messages, configurator, SYSM-10
 messages, DBG-B
 messages, MAC-A
 messages, UTIL-2, UTIL-5, UTIL-6, UTIL-7, UTIL-8, UTIL-9
 messages, TRM-A
 reporting, MAC-1, MAC-B
 reporting, ONG-2
 errors
 affecting single file, UTIL-4
 requiring operator action/response, UTIL-4
 that cause rejection of current source tape volume, UTIL-4
 that terminate current command, FC, UTIL-4
 that terminate FC, UTIL-4
 errors,
 base page link overflow, LDR-6
 disc allocation, PRM-A
 dispatching, PRM-A
 duplicate program name, LDR-4
 EXEC other, PRM-A
 executive halt, PRM-A
 executive, PRM-A
 expected order of commands, LDR-5, LDR-6
 I/O call, PRM-A
 I/O format, PRM-A
 INDXR, LDR-A
 LOADR, LDR-A
 memory overflow, LDR-6, LDR-7
 MLLDR, LDR-A
 multilevel segmentation, LDR-4
 offpath reference, LDR-6, LDR-8
 other, LDR-4
 parity, PRM-A
 path overflow, LDR-6
 program management, PRM-A
 reporting, LDR-4
 routing, PRM-A
 runtime, LDR-8
 SGMTR, LDR-A
 soft parity, PRM-A
 summary of SGMTR, LDR-6
 summary of SXREF, LDR-6
 SXREF, LDR-A
 syntax checking mode (SXREF), LDR-6
 VMA/EMA, PRM-4

waiting for resources, LDR-4
 warnings, LDR-4, LDR-7
 evaluate user base, SYSM-1
 evaluation of expressions, MAC-4
 EWRT FMP call, PRM-3
 EX - terminate GASP, BSP-4
 EX command, TRM-3
 EX errors, PRM-A
 examine
 memory, DBG-3
 or modify buffer limit, TRM-4
 example
 generation, ONG-1
 of a macro, MAC-5
 excluding bad pages, SYSM-10
 EXEC 6, ONG-B
 EXEC 8, LDR-2, LDR-9
 EXEC
 call, error messages, PRM-A
 call, error returns, PRM-2
 call, EXEC 1 - standard I/O read, PRM-2
 call, EXEC 2 - standard I/O write, PRM-2
 call, EXEC 3 - I/O control call, PRM-2
 call, EXEC 4 - local disc track allocation, PRM-2
 call, EXEC 5 - local disc track release, PRM-2
 call, EXEC 6 - program completion, PRM-2
 call, EXEC 7 - program suspend, PRM-2
 call, EXEC 8 - program segment load, PRM-2
 call, EXEC 9 - immediate schedule with wait, PRM-2
 call, EXEC 10 - immediate schedule without wait, PRM-2
 call, EXEC 11 - time request, PRM-2
 call, EXEC 12 - program time scheduling, PRM-2
 call, EXEC 13 - I/O status, PRM-2
 call, EXEC 14 - string passage, PRM-2
 call, EXEC 15 - global disc track allocation, PRM-2
 call, EXEC 16 - global disc track release, PRM-2
 call, EXEC 17 - class read, PRM-2
 call, EXEC 18 - class write, PRM-2
 call, EXEC 19 - class I/O control, PRM-2
 call, EXEC 20 - class write/read, PRM-2
 call, EXEC 21 - class get, PRM-2
 call, EXEC 22 - program swapping control, PRM-2
 call, EXEC 23 - queue schedule with wait, PRM-2
 call, EXEC 24 - queue schedule without wait, PRM-2
 call, EXEC 25 - partition status, PRM-2
 call, EXEC 26 - memory size, PRM-2
 call, PRM-2, BSP-3
 description conventions, PRM-2
 errors, other, PRM-A
 processor, PRM-2
 execute RTE system command, TRM-3
 executing the On-Line Generator, ONG-3

executive
 communication, PRM-1 , PRM-2
 halt errors, PRM-A
 EXIT
 (system macro), MAC-K
 subroutine operations, MAC-K
 EXP, RLIB-2
 expressions using MAC-assemblytime variables, MAC-4
 expressions, DBG-1, MAC-2
 EXT instruction translation, UTIL-3
 EXT, MAC-4, MAC-B, MAC-C
 extended
 arithmetic instruction, MAC-3
 arithmetic unit, MAC-B
 background map, ONG-B
 Background program, LDR-2, LDR-3
 background programs summary, UTIL-2
 code space, LDR-F
 instruction group, MAC-B
 Memory Area (EMA) size, TRM-4
 Memory Area (EMA), declaring, PRM-4
 Memory Area (EMA), I/O transfers, PRM-4
 Memory Area (EMA), local, TRM-1
 Memory Area (EMA), PRM-4
 Memory Area (EMA), programming, PRM-4
 Memory Area (EMA), shareable EMA, PRM-4
 Memory Area (EMA), shareable, TRM-1
 Memory Area (EMA), size, PRM-4
 precision constants, MAC-4
 relocatable records, MAC-1
 extent, TRM-3
 extents, file, TRM-3
 EXTN, BSP-1

F

F option, FC, UTIL-4
 FAD, MAC-3, MAC-B, MAC-C
 FADSB, RLIB-2
 fast FORTRAN processor, RLIB-1
 father program, PRM-2
 father-son relationship, UTIL-2
 father/son buffer passage, PRM-2
 fault, LDR-3, LDR-4
 node, LDR-2
 overhead, LDR-2
 FC - file backup utility, PRM-1
 FC, file copy utility, UTIL-4
 FCONT FMP call, PRM-3
 FDV, MAC-3, MAC-C
 features, BSP-1
 FF, forward space tape, UTIL-6

FIELD (system macro), MAC-K
file

- access, PRM-3
- access considerations, SYSM-3
- append, UTIL-2
- backup utility (FC), TRM-1, UTIL-4
- concatenate, UTIL-2
- copy, TRM-3
- Copy utility, FC, UTIL-4
- create, TRM-3
- definition FMP calls, PRM-3
- descriptor legality checking, LIF, UTIL-7
- descriptor, PRM-3, PRM-G, SYSM-C, TRM-3
- extents, PRM-3
- fixed-length, TRM-3
- keyed text, UTIL-2
- list file contents, TRM-3
- management, PRM-3
- management, error messages, TRM-A
- Management Package (FMP), PRM-1, PRM-3, TRM-1, TRM-3
- management system, BSP-1, PRM-1, SYSM-4
- manager (FMGR), PRM-1, PRM-3, TRM-2, TRM-3, TRM-D
- manager (FMGR), scheduling programmatically, PRM-J
- Manager error codes, TRM-3
- Manager parameters syntax rules, TRM-3
- Manager privileged commands, TRM-3
- Manager prompt, TRM-2 TRM-4
- manipulation utilities, MERGE, SCOM, UTIL-2
- names, PRM-3
- non-disc files, TRM-3
- non-update mode, PRM-3
- passage, PRM-J
- positioning, PRM-3
- protection, PRM-3
- ranges, FC, UTIL-4
- record format, TRM-3
- security, PRM-3, TRM-3
- scratch, PRM-3
- system conventions, SYSM-6
- sequential, PRM-3
- size, TRM-3
- transfer data and create files, TRM-3
- transfer data to existing file, TRM-3
- transfer, UTIL-2
- truncation, PRM-3
- types, PRM-1, PRM-3, TRM-3
- unit save tape, UTIL-6
- updates, PRM-3
- variable length, TRM-3
- filename specification, SYSM-5
- filesave, SYSM-5
- filesave, specification, SYSM-5
- fill number, UTIL-A

firmware configuration, SYSM-4
 FIX, MAC-3, MAC-B, MAC-C
 FIXDR, RLIB-3
 FL command, TRM-4
 flexible
 disc, formatting, sparing, UTIL-A
 disc, verification, UTIL-8
 FLOAT, RLIB-2
 floating
 point instructions, MAC-3
 point library, RLIB-1
 floating-point
 instructions, MAC-B
 numbers, MAC-4
 FLT, MAC-3, MAC-B, MAC-C
 FLTDR, RLIB-3
 flush
 class request, PRM-5
 terminal buffer, TRM-4
 FM (format), LDR-5
 FMGR
 command table, SYSM-E
 commands, BSP-1, BSP-2, BSP-3, TRM-2 TRM-3
 error codes, BSP-A
 error Help function, FC, UTIL-4
 error messages, TRM-A
 errors, batch and spooling, BSP-A
 initialization, SYSM-6
 FMP
 call parameters, PRM-3
 calls, BSP-3, PRM-3
 disc files, ONG-1
 error, PRM-3
 Tracks, PRM-3
 FMP, MAC-3, MAC-B, MAC-C
 FO (force load), LDR-5
 FO, format command, UTIL-8
 force
 command, LDR-4
 load, LDR-3, LDR-4
 formal macro parameters, MAC-5
 format a flexible disc (FO), UTIL-8
 format of routines, RLIB-1
 formats, BSP-2
 formatting, UTIL-A
 FORMAT utility, UTIL-8
 FORTRAN
 4X, subroutines callable by, RLIB-A
 77, subroutines callable by, RLIB-A
 FORTRAN, LDR-3, LDR-6, LDR-8, LDR-9, LDR-F, PRM-1 , PRM-2
 FORTRAN statement translation, UTIL-3
 FSB, MAC-3, MAC-B, MAC-C
 FSTAT FMP call, PRM-3

FSV, MAC-B
FTIME, RLIB-5
Full status-display format option, FC, UTIL-4
function
 codes, PRM-2 , PRM-3
 keys, display, UTIL-2
Function-key Manipulation utilities, UTIL-2

G

G globals, TRM-3
GASP
 CS command, BSP-2
 DJ command, BSP-2
 DS command, BSP-2
 error codes, BSP-A
 error explanation, BSP-4
 initialization, BSP-5
 operator commands, BSP-1
GASP, BSP-1, BSP-4, BSP-5
GEN, MAC-4, MAC-B, MAC-C
GEN errors, 17, 19, 20 49, 59, 69, ONG-2
GEN instruction translation, UTIL-3
general flow, RLIB-5
generating
 a new system, ONG-1
 microcode instructions, MAC-E
 old records, MAC-E
 your system, SYSM-4
generation
 error codes, ONG-A
 listing, sample, ONG-70
 listing, sample, ONG-F
 planning, ONG-2
 vs. on-line loading, SYSM-4
Generator
 command, !(abort), ONG-2
 command, BR (break), ONG-2
 comments command, ONG-2
 control instructions, MAC-4
 relocation guidelines, ONG-B
 requirements, ONG-1
 responses, prepare, SYSM-4
 scratch file, ONG-3
 waiting for tracks, ONG-3
 waiting on list LU lock, ONG-3
GENIX - help utility, PRM-1, UTIL-2
get
 SCB error mnemonic, RLIB-5
 session capability, RLIB-5
GETAD, RLIB-4
GETST subroutine, PRM-5

GETST, RLIB-5
 global
 cartridges, PRM-3
 assembly-time variable, MAC-4
 parameters, TRM-3
 tracks, PRM-2
 globals definition, FC, UTIL-4
 GO command, TRM-4
 GR command, FC, UTIL-4
 group
 accounts, SYSM-3
 accounts, definitions, SYSM-7
 and user, account entries, SYSM-8
 and user, cartridge requirements, SYSM-3
 cartridges, PRM-1, PRM-3, TRM-2, TRM-3
 cartridge requirements, SYSM-3
 GTERR, RLIB-5
 GTSCB, RLIB-5

H

halt
 errors, executive, PRM-A
 instruction, MAC-3, MAC-B, MAC-B
 halts, configurator, SYSM-10
 hard
 disc, verification, UTIL-8
 parity errors, PRM-A
 hardware considerations, PRM-1
 HE - Help, LIF, UTIL-7
 HE command, TRM-3 TRM-4
 heading, MAC-4
 HED, MAC-4, MAC-B, MAC-C
 HELLO file, TRM-2 TRM-2
 HELP - help utility, PRM-1
 HELP
 file, TRM-3 TRM-4
 function, TRM-3, TRM-4, UTIL-6
 function, FC, UTIL-4
 operation in session environment, SYSM-6
 utility, SYSM-6
 utilities, TRM-1, UTIL-2
 HI file (MTM), SYSM-6
 high
 base page address, SYSM-B
 main address, SYSM-B
 HLT, MAC-3, MAC-B, MAC-C
 HLTC, MAC-B, MAC-C

host
configuration, SYSM-5
system, SYSM-5
HP
7905 disc configuration, SYSM-4
7906 (H) disc configuration, SYSM-4
7920 (H) disc configuration, SYSM-4
7925 (H) disc configuration, SYSM-4
9895 disc configuration, SYSM-4
subsystem usage, ONG-2
HP-IB interface driver DVA37, SYSM-4

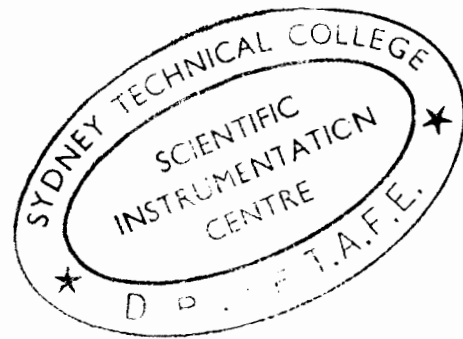
I

I option, FC, UTIL-4
I/O
and swapping, PRM-2
buffered, TRM-4
buffering, PRM-1
call error codes, PRM-A
classes, ONG-3
configuration planning, SYSM-4
control call - EXEC 3, PRM-2
controller, PRM-1, TRM-4
controller, time-out, PRM-1
device status, TRM-4
device, PRM-1
error message format, PRM-A
error messages, TRM-A
EXEC calls, BSP-3, PRM-1
EXEC calls, class I/O, PRM-2
EXEC calls, standard I/O, PRM-2
function code, BSP-2
processing, PRM-1
re-entrant, TRM-4
reconfiguration steps, SYSM-10
request linkage, TRM-4
select codes, PRM-1, TRM-4
status - EXEC 13, PRM-2
structure planning, SYSM-4
Tables and Processing, PRM-E
to disc files, BSP-2
transfers to/from the VMA/EMA, PRM-4
unbuffered, TRM-4
without wait, PRM-2
IABS, RLIB-2
IAND, RLIB-2
IBUF call, PRM-3
IBUFR format, BSP-3
IBUFR, BSP-3
ICAPS, RLIB-5

ICD
 disc, SYSM-5
 disc address and unit numbers, SYSM-A
 disc driver, DVA32, SYSM-4
 disc interface, track configuration, SYSM-A
 disc sectors, SYSM-A
 disc spare tracks, SYSM-4
 disc subchannel definition, UTIL-6
 disc subchannels, SYSM-A
 disc surface organization, SYSM-4, SYSM-A
 disc tracks, SYSM-A
 switch, SYSM-5
 ICD and MAC subchannel initialization, SYSM-5
 ICR call, PRM-3
 ID
 extension, PRM-4, ONG-3
 segment extensions, PRM-C, SYSM-B, TRM-C
 segment program, SYSM-B
 segment, LDR-2, LDR-9, PRM-1, PRM-2, PRM-4, PRM-5,
 TRM-3, TRM-4, TRM-C
 segment, requirements for program loading, LDR-2
 segments, short, PRM-C
 IDCB call, PRM-3
 IDCBS call, PRM-3
 IDCBZ call, PRM-3
 IDGET, RLIB-5
 IDIM, RLIB-2
 IDINT, RLIB-2
 IERR call, PRM-3
 IF (system macro), MAC-K
 IF command, TRM-3
 IFBRK system subroutine, TRM-4
 IFBRK, RLIB-5
 IFIX, RLIB-2
 IFN, MAC-C, MAC-L
 IFTTY, RLIB-5
 IFX, MAC-L
 IFZ, MAC-C
 IGET, RLIB-4
 IGLOBAL, MAC-4, MAC-B, MAC-C
 Ignore data errors option, FC, UTIL-4
 Ignore specified lines, UTIL-2
 ILOCAL, MAC-4, MAC-B, MAC-C
 immediate schedule, with or without wait, PRM-2
 implementation notes, MAC-I
 implied RUN command, TRM-3
 IN, command, TRM-3
 IN, initialize an LU, UTIL-8
 IN,session query, RLIB-5
 INA, MAC-3, MAC-B, MAC-C
 INAM call, PRM-3
 INB, MAC-3, MAC-B, MAC-C
 INCLUDE statement, MAC-1, MAC-4, MAC-5, MAC-B, MAC-C

inclusive OR, DBG-A
 IND.E, RLIB-4
 index
 register instructions, MAC-3, MAC-B
 to Gasp operator commands, BSP-4
 indirect
 address subroutine, RLIB-5
 addressing indicator, MAC-2, MAC-3
 indirection addressing indicator, MAC-L
 INDXR
 (relocatable library utility), TRM-1
 indexed relocatable library utility, PRM-1
 INDXR, LDR-6
 INDXR, error messages, LDR-A
 inequality search, DBG-5
 information messages and warnings, FC, UTIL-4
 inhibit automatic program renaming, TRM-3
 init, SYSM-5
 initial offset mode, PRM-2
 initialize cartridge, TRM-3
 initialization
 dialogue, SYSM-7
 of cartridges, PRM-3
 phase, ONG-2, ONG-3
 initialization, ONG-2
 initialize an LU (IN), UTIL-8
 initialized virtual memory, PRM-4
 initializing and sparing a hard disc, UTIL-A
 INP (input device), PRM-J
 input
 command file, PRSTR, UTIL-6
 file format GENIX, UTIL-2
 input/output instructions, MAC-3, MAC-B
 input/output, overflow and halt, MAC-B
 inspool
 files, BSP-1
 program (JOB), BSP-1
 inspooling, BSP-1
 installation, SYSM-4
 instruction replacements, MAC-3
 INT, RLIB-2
 integer
 comparison, MAC-4
 numbers, MAC-4
 interactive
 editor commands, TRM-2
 editor, TRM-1
 LU query, RLIB-5
 operator commands, TRM-2
 scheduling of FMGR, TRM-D
 spooling, BSP-2
 interface cards, SYSM-4
 interleaving (fill number), UTIL-A

interleaving, UTIL-8
interrupt table, ONG-2, ONG-3
interrupt,
 handling with microcode, PRM-E
 handling without microcode, PRM-E
 privileged, PRM-1
 processing, PRM-1
 table, PRM-E
interrupting LU query, RLIB-5
interval timer, TRM-4
introducing the libraries, RLIB-1
IO, display I/O information, UTIL-6
IOR, MAC-3, MAC-B, MAC-C, RLIB-2
ISC call, PRM-3
ISET, MAC-4, MAC-B, MAC-C
ISIGN, RLIB-2
ISLU, BSP-3
ISMP, BSP-3
ISSR, RLIB-4
ISSW, RLIB-4
ISX, MAC-3, MAC-B, MAC-C
ISY, MAC-3, MAC-B, MAC-C
ISZ, MAC-3, MAC-B, MAC-C
IT command, TRM-4
IXOR, RLIB-2



J

JLY, MAC-3, MAC-B, MAC-C
JMP, MAC-3, MAC-B, MAC-C
JO, initiate job for spooling, BSP-2
JOB, BSP-1, BSP-2, BSP-4
JOBFIL, BSP-2, UTIL-2
JOBFIL, file, BSP-2
jobs,
 batch, TRM-1
 maximum number of active and pending, BSP-5
JPY, MAC-3, MAC-B, MAC-C
JRS, MAC-3, MAC-B, MAC-C
JSB, MAC-3, MAC-B, MAC-C

K

K option, FC, UTIL-4
Keep tape on-line option, FC, UTIL-4
key, GENIX, UTIL-2
KEYS - soft key program, PRM-1, TRM-1, UTIL-2
keyset, create, list, modify, UTIL-2
KS - kill outspool, BSP-4
KYDMP - soft key program, PRM-1, TRM-1, UTIL-2

L

L option, FC, UTIL-4
label field, MAC-2, MAC-5
labeled
 COMMON - see COMMON
 common block, PRM-4
LAE, MAC-3, MAC-B, MAC-C
language
 considerations, LDR-3, LDR-8
 support, PRM-1
language,
 BASIC/1000D, PRM-1
 FORTRAN, PRM-1
 Macro/1000, PRM-1
 Micro-Assembler, PRM-1
 Pascal/1000, PRM-1
large
 background program map, ONG-B
 Background program, LDR-2
 background programs summary, UTIL-2
LAX, MAC-3, MAC-B, MAC-C
LAY, MAC-3, MAC-B, MAC-C
LB - see Large Background program
LBE, MAC-3, MAC-B, MAC-C
LBT, MAC-3, MAC-B, MAC-C
LBX, MAC-3, MAC-B, MAC-C
LBY, MAC-3, MAC-B, MAC-C
LC command, FC, UTIL-4
LDA, MAC-3, MAC-B, MAC-C
LDB, MAC-3, MAC-B, MAC-C
LDX, MAC-3, MAC-B, MAC-C
LDY, MAC-3, MAC-B, MAC-C
LE option, LDR-4
leaf node, LDR-3
length attribute, MAC-4
LFA, MAC-3, MAC-B, MAC-C
LFB, MAC-3, MAC-B, MAC-C
LG command, TRM-B
LGOFF, SYSM-3
LGON error message, SYSM-8
LGON help file entries, SYSM-8
LGTAT, TRM-1, PRM-1, PRM-2, UTIL-2
LH command, FC, UTIL-4
LI (user library file), LDR-3, LDR-5
LI command, TRM-3
LIA, MAC-3, MAC-B, MAC-C
LIAC, MAC-B, MAC-C
LIB, MAC-3, MAC-B, MAC-C
LIBC, MAC-B, MAC-C
libraries, SYSM-4
libraries, introduction, RLIB-1
LIF utility, UTIL-7

LIMEM, RLIB-5
 limitations, DBG-1
 line
 printer driver, DVA12, SYSM-4
 printer driver, DVBl2, SYSM-4
 printer driver, DVr12, SYSM-4
 linear scheduling, TRM-1
 linkage type, LDR-5
 linkage word, TRM-4
 linked list technique, TRM-4
 linking,
 base page, LDR-2
 current page, LDR-2
 mixed, LDR-2
 overview, LDR-E
 reported in completion message, LDR-4, LDR-9
 LINKS IN command, ONG-2
 LINKS IN CURRENT command, ONG-B
 List
 Comment file command, FC, UTIL-4
 device, LL, UTIL-4
 device, TRM-3
 directory: DL, UTIL-4
 file, MAC-E
 file contents, TRM-3
 file namr, ONG-2
 header, TRM-4
 Header file command, FC, UTIL-4
 keyset, UTIL-2
 output, LDR-5, output, MAC-1, MAC-E
 LIST, MAC-4, MAC-B, MAC-C
 listing commands, FC, UTIL-4
 listing control instructions, MAC-1, MAC-4, MAC-B
 LIT, MAC-2, MAC-4, MAC-B, MAC-C
 literals, MAC-2, MAC-4
 LITF, MAC-2, MAC-4, MAC-B, MAC-C
 LKEMA - lock a shareable EMA partition, PRM-4
 LKEMA, lock shareable EMA partition, RLIB-5
 LL command, TRM-3
 LL, list device, FC, UTIL-4
 LO (set relocation base), LDR-5
 LO command, TRM-3
 load point, LDR-4
 load-and-go area, TRM-B
 load-on-call, LDR-1, LDR-2, LDR-3
 loader (LOADR, MLLDR), PRM-1, TRM-1
 loader
 and generation control instructions, MAC-B
 control instructions, MAC-4
 loading
 and using DBUGR, DBG-1
 FORMT, UTIL-8
 from a logical unit, LDR-4, LDR-9



- large programs, LDR-6, LDR-8
- the on-line UTILities, UTIL-6
- loadmap,
 - default, LDR-4
 - EC option, LDR-4, LDR-8
 - LE option, LDR-4
 - sample, LDR-4
- LOADR - relocating loader, PRM-1, LDR-5, LDR-9
 - code input, LDR-9
 - command file #FC6, FC, UTIL-4
 - command input, LDR-9
 - commands, LDR-9
 - completion message, LDR-9
 - converting to multilevel segmentation, LDR-9
 - default options, UTIL-2
 - errors, LDR-A
 - functions, LDR-1, LDR-2
 - memory layout, LDR-9
 - operation, LDR-9
 - runstring, LDR-9
- LOC - see load-on-call
- local
 - assembly-time variable, MAC-4
 - COMMON, PRM-1
 - data, LDR-6, LDR-8
 - SAVE area, LDR-4
 - tracks, PRM-2
- location
 - counter changes, DBG-3
 - examination, DBG-C
 - of spool files, BSP-5
- LOCF FMP call, PRM-3
- Lock
 - cartridge, UTIL-6
 - cartridge option, FC, UTIL-4
 - disc, UTIL-6
- LOD, MAC-4, MAC-B, MAC-C, UTIL-3
- log device, TRM-3
- log-off
 - procedures, TRM-2
 - processor, SYSM-3
- log-on
 - procedures, TRM-2
 - processor, SYSM-3
- logical
 - address space, LDR-1 (see also longest path and memory maps)
 - memory, PRM-1, PRM-4
 - memory and base page, PRM-F
 - memory organization, ONG-B
 - negation, MAC-4
 - operators, MAC-4
 - product reviewed, DBG-5
 - source area, TRM-3 TRM-B

- unit, BSP-5, LDR-4, TRM-3
- unit (LU), display information, TRM-3
- unit (LU), down, TRM-4
- unit (LU), lock applications and resource numbers, PRM-5
- unit (LU), lock error codes, PRM-A
- unit (LU), lock subroutine LURQ, PRM-5
- unit (LU), lock, PRM-1 , PRM-5
- unit (LU), LU mapping, TRM-3
- unit (LU), numbers, PRM-1
- unit (LU), session, PRM-1
- unit (LU), session, TRM-2 TRM-3
- unit (LU), system, PRM-1
- unit (LU), system, TRM-2 TRM-3
- unit (LU), TRM-3 TRM-4
- unit assignment, BSP-2, SYSM-4
- unit lock subroutine LURQ, RLIB-5
- LOGLU, RLIB-5
- LOGON program, BSP-2
- LOGON, SYSM-3
- longest path, LDR-2, LDR-3, LDR-4
- loss of unidentified files on copy from tape, FC, UTIL-4
- LS (see logical source area), TRM-B
- LS command, TRM-B,
- LSHIFT (system macro), MAC-K
- LSL, MAC-3, MAC-B, MAC-C
- LSR, MAC-3, MAC-B, MAC-C
- LST, MAC-C, MAC-L
- LU
 - command, TRM-4
 - mappings, ONG-3
 - query, RLIB-5
 - saves, UTIL-6
- LURQ subroutine, PRM-5
- LUs and EQTs status summary, UTIL-2
- LUSES, RLIB-5
- LUTRU, RLIB-5

M

- M (memory node), LDR-3, LDR-5
- MAC
 - disc, SYSM-5
 - disc driver, DVR32, SYSM-4
 - disc sectors, SYSM-A
 - disc spare tracks, SYSM-4
 - disc subchannel definition, UTIL-6
 - disc subchannel initialization, SYSM-5
 - disc subchannels, SYSM-A
 - disc surface organization, SYSM-4, SYSM-A
 - disc tracks, SYSM-A
 - disc unit number, SYSM-A
 - switch, SYSM-5

machine instructions, MAC-1, MAC-2, MAC-3, MAC-B
 MACLIB statement, MAC-4, MAC-5, MAC-B, MAC-C
 Macro
 Assembler operations, MAC-E
 body, MAC-5
 call statement, MAC-1, MAC-5
 control statement, MAC-E
 definition, MAC-1, MAC-2, MAC-5, MAC-B
 ENDMAC statement, MAC-5
 example, MAC-K
 libraries, MAC-5
 name statement, MAC-5
 parameters, MAC-4, MAC-5
 statement, MAC-5, MAC-B, MAC-C
 Macro, LDR-6
 Macro/1000, PRM-1, PRM-2
 Macro/1000 OLDRE restrictions, UTIL-3
 magic symbols, DBG-6
 magnetic tape driver DVR23, SYSM-4
 MAGTP, RLIB-4
 mailbox I/O, PRM-2
 main
 entry point, LDR-6
 programs, LDR-2
 maintaining
 the account system, SYSM-8
 the system, SYSM-1
 MANAGER.SYS, SYSM-3
 MAP
 command, ONG-2
 examination special mode, DBG-3
 LINKS command, ONG-B
 registers, DBG-C
 Mapping Segment (MSEG), PRM-4
 mark, DBG-1
 mark \Q, DBG-A
 master
 mode, momentarily in, DBG-2
 security code, PRM-3, TRM-2 TRM-3
 security code, FC, UTIL-4
 mathematical subroutines, RLIB-2, RLIB-6
 MAX
 (system macro), MAC-K
 number of jobs, job file disc, BSP-5
 maximum
 number active and pending spool files, BSP-5
 number of partitions, ONG-2
 pathlength and tree size, LDR-3
 MBF, MAC-3, MAC-B, MAC-C
 MBI, MAC-3, MAC-B, MAC-C
 MBT, MAC-3, MAC-B, MAC-C
 MBW, MAC-3, MAC-B, MAC-C
 MC command, TRM-3

MD, driver configuration listing, UTIL-9
 ME command, TRM-3
 ME, EQT listing, UTIL-9
 meeting changing cartridge requirements, SYSM-3
 MEM status special mode, DBG-3
 memory
 allocation, LDR-1, LDR-2, LDR-7
 allocation, base page to root, LDR-7
 allocation, LOADR, LDR-9
 allocation, NAM record, LDR-2
 allocation, program nodes, LDR-7
 allocation, program nodes, memory and disc nodes, LDR-7
 allocation, program nodes, memory-resident only, LDR-7
 allocation, program nodes, root node only, LDR-7
 allocation, program types, LDR-2
 allocation, VMA/EMA area, LDR-7
 allocation, VMA/EMA page table, LDR-7
 allocation table entry, PRM-F
 and I/O reconfiguration, SYSM-10
 change controls, DBG-3
 counter changes, DBG-3
 lock, PRM-2
 management and related tables, PRM-F
 management, PRM-1
 maps, LDR-7, LDR-9, LDR-C
 maps, PRM-1
 nodes, LDR-6
 overflow, LDR-6, LDR-7, LDR-8
 overhead - see overhead
 protect fence, MAC-3, PRM-1
 protect violations, PRM-A
 protection, ONG-B, PRM-1
 reconfiguration procedures, SYSM-10
 reference instructions, MAC-3, MAC-B
 search, DBG-5
 search and clear, DBG-C
 size, ONG-2, ONG-3
 size - EXEC 26, PRM-2
 spaces, MAC-4
 usage criteria, LDR-3
 memory, contents, DBG-3
 memory-based operating system, UTIL-6
 memory-image
 form, PRM-3
 format, LDR-2
 memory-resident
 access table area II, ONG-2, ONG-3
 and disc-resident nodes, mixed, LDR-3
 base page, ONG-B
 library, ONG-2, ONG-B, PRM-1
 library modules, ONG-B
 map, ONG-B
 program area, ONG-B

programs summary, UTIL-2
 programs, ONG-B, PRM-1
 MERGE (merge utility), TRM-1, PRM-1, LDR-6, UTIL-2
 merged and indexed files, LDR-6
 MESSAGE
 (system macro), MAC-K
 continuation, GENIX, UTIL-2
 files, PRM-3, TRM-3
 processor interface, RLIB-5
 messages
 during assembly, MAC-E
 logged by FC, UTIL-4
 to system console, TRM-3 TRM-4
 MI, Interrupt Table listing, UTIL-9
 MIA, MAC-3, MAC-B, MAC-C
 MIAC, MAC-B, MAC-C
 MIB, MAC-3, MAC-B, MAC-C
 MIBC, MAC-B, MAC-C
 MIC, MAC-C, MAC-L
 Micro-Assembler, PRM-1
 microcode
 replacement values, ONG-2
 replacements, MAC-1, MAC-4
 microcoded subroutines, RLIB-1
 microcoding capabilities, MAC-1
 MIN (system macro), MAC-K
 minus sign, DBG-A
 mixed linking, LDR-2, LDR-4, LDR-6
 MLLDR
 breakpoint, setting, DBG-6
 command file utilities (SGMTR, SXREF), TRM-1
 MLLDR,
 errors, LDR-A
 interface with debugger, LDR-2
 modes of operation, LDR-4
 operation overview, LDR-1
 processing sample trace, LDR-3
 runstring operation, LDR-4
 MLS
 commands, LDR-3
 programs, LDR-4
 tree, LDR-3
 MLS-LOC loader (MLLDR), PRM-1, TRM-1
 MLSDB (interactive debugger), TRM-1
 MMAP subroutine, PRM-B
 MNOTE, MAC-4
 MOD, RLIB-2
 mode control, DBG-2, DBG-3, DBG-C
 modify
 keyset, UTIL-2
 partition priority aging, TRM-4
 program page requirements, ONG-2, ONG-3
 Session Switch Table (SST), TRM-3

- spool options, TRM-3
 - virtual memory size, TRM-4
 - working set size, TRM-4
- module, LDR-3
- mother partitions, PRM-1, PRM-2, PRM-4, TRM-1
- mount cartridge, TRM-3
- MP error, PRM-A
- MPY, MAC-3, MAC-B, MAC-C
- MR command, TRM-B
- MS (multiple search), LDR-3, LDR-5
- MS command, TRM-B
- MSEG size, LDR-4, LDR-7, MAC-4, MAC-B, MAC-C, TRM-4
- MTM
 - break-mode prompt, TRM-4
 - services, TRM-2
- multi-terminal
 - environment, ONG-2
 - Monitor (MTM), SYSM-1, SYSM-4, TRM-2
- multi-user interface, selecting, SYSM-1
- multilevel
 - segmentation (MLS), PRM-1, LDR-2, SYSM-B
 - segmentation, converting to, LDR-9
 - segmentation, data reference, LDR-3
 - segmentation, duplication of modules, LDR-3
 - segmentation, errors, LDR-4
 - segmentation, load-on-call, LDR-2
 - segmentation, maximum pathlength, LDR-3
 - segmentation, maximum tree size, LDR-3
 - segmentation, overview, LDR-3
 - segmentation, reducing path size, LDR-8
 - segmentation, restrictions on duplicating modules, LDR-3
 - segmentation, restrictions, LDR-3, LDR-6
 - segmentation, structure, LDR-3
 - segmentation, terminology, LDR-3
 - segmentation, tree structure, LDR-3
 - segmentation, writing the command file, LDR-3
- multiple
 - 12821A Interface Card operation, SYSM-A
 - 13037B/C controller operation, SYSM-A
 - CPU disc systems, SYSM-4
 - CPU operation with 13037 controller, SYSM-A
 - disc controllers, SYSM-4
 - modules, MAC-1, MAC-4
 - saves, UTIL-5
- multiple-volume tape sets, UTIL-6
- multiplication, MAC-2
- multipoint terminal, TRM-2
- multiprogramming
 - and timeslicing, PRM-1
 - with timeslicing, TRM-1
- MVW, MAC-3, MAC-B, MAC-C
- MWF, MAC-3, MAC-B, MAC-C
- MWI, MAC-3, MAC-B, MAC-C

MWW, MAC-3, MAC-B, MAC-C
MXMND, RLIB-2
MXMNI, RLIB-2
MXMNR, RLIB-2

N

NA (user library name), LDR-3, LDR-5
NAM
 instruction translation, UTIL-3
 record, LDR-2, LDR-6
 statement, LDR-3, MAC-1, MAC-4, MAC-B, MAC-C
 type 5, LDR-9
name comment file, CF, UTIL-4
NAMF FMP call, PRM-3
namr, TRM-3, RLIB-4
negate operator, MAC-4
nesting of macro definitions, MAC-5
new record identifier field, UTIL-3
NO parameter, BSP-2
no-abort option, PRM-2
no-allocate option, LDR-6
no-operation instruction, MAC-3, MAC-B
no-suspend I/O option, PRM-2
node, LDR-3
node
 fault, LDR-2, LDR-3, LDR-4
 numbers, LDR-3
 tree, LDR-3
non-disc devices, PRM-3, TRM-3
non-disc files, TRM-3
non-extended relocatable records, MAC-1
non-fatal tape read errors, FC, UTIL-4
non-main modules, LDR-6
non-segmented programs, LDR-4
non-sequentially extended type 1 and 2 files, TRM-3
non-session
 and non-MTM systems, SYSM-4
 cartridge, PRM-3, TRM-2, TRM-3
 cartridge allocation and access, TRM-3
 cartridge requirements, SYSM-3
 environment, READT, UTIL-5
 mode, TRM-2
 terminals in session environment, TRM-2
non-spooling option, GENIX, UTIL-2
non-translatable record, OLDRE, UTIL-3
non-update mode, PRM-3
NOP, MAC-3, MAC-B, MAC-C
normal
 completion, PRM-2
 termination messages, SYSM-5
NS parameter, BSP-2

null
 cartridge field, FC, UTIL-4
 security code, FC, UTIL-4
number
 of blocks on device, ONG-2
 of spool files, BSP-5
 systems, ONG-3
numeric
 mode, DBG-2
 terms, MAC-2

O

O option, FC, UTIL-4
OCT, MAC-4, MAC-B, MAC-C
octal
 addition and subtraction, DBG-A
 constants, MAC-4
 to decimal conversion, DBG-A
OF command, TRM-3 TRM-4
off-line physical backup utility, UTIL-6
offpath reference, LDR-3, LDR-6, LDR-8
old
 literal constructs, MAC-L
 pseudo ops, MAC-L
OLDRE, MAC-1, MAC-E, UTIL-3
ON command, TRM-4
on-line
 driver replacement utility (DRREL, DRRPL), TRM-1
 generator (RT6GN), TRM-1
 Generator description, ONG-1
 Generator dialogue, ONG-2
 Generator error codes, ONG-A
 Generator operating system,, ONG-B
 loading of Macro/1000, MAC-E
 loading vs. generation, SYSM-4
 physical backup UTILlities, UTIL-6
 utilities, UTIL-6
OP
 (opcode), LDR-5
 command, TRM-2
opcode field, MAC-2
Open
 cartridge option, FC, UTIL-4
 flag word, SYSM-B, TRM-C
OPENF FMP calls, PRM-3
operand field, MAC-2
operating
 environment, RTE-6/VM, TRM-2, UTIL-1
 system, ONG-1, ONG-B, PRM-3, SYSM-4
 system code partitions, PRM-1
 system features, TRM-1

- with session monitor, TRM-2
- without session monitor, TRM-2
- operator
 - commands, ONG-2
 - precedence, MAC-2
 - suspend command, TRM-4
- operators, DBG-1
- OPNVM subroutine, PRM-4
- optional libraries, SYSM-4
- ORB, MAC-C, MAC-L
- ORG, MAC-4, MAC-B, MAC-C
- ORR, MAC-4, MAC-B, MAC-C, MAC-L
- OTA, MAC-3, MAC-B, MAC-C
- OTAC, MAC-B
- OTB, MAC-3, MAC-B, MAC-C
- OTBC, MAC-B, MAC-C
- other conversions, DBG-A
- outlu, BSP-2

- output
 - file namr, ONG-2
 - modes, DBG-2
 - spooling, BSP-1
- outspool
 - errors, BSP-2, BSP-A
 - files, BSP-1
 - logical unit assignment, BSP-2
 - priority, BSP-2
 - session logical unit, BSP-3
 - status, BSP-2
- outspooling, close and queue, BSP-3
- overflow bit, MAC-3, MAC-B
- overhead,
 - debugger, LDR-6
 - EMA, LDR-6
 - fault, LDR-2
 - links, LDR-8
 - memory, LDR-7
 - multilevel segmentation, LDR-7
 - profile option, LDR-6, LDR-7
 - virtual memory, LDR-8
 - VMA, LDR-6
- overlaid FMP files, SYSM-5
- overlying an existing driver, UTIL-9
- OVF, RLIB-4

P

- P globals, TRM-3
- P option, FC, UTIL-4
- PA command, TRM-3
- PA option, WHZAT, UTIL-2

PAA, MAC-3, MAC-B, MAC-C
 PAB, MAC-3, MAC-B, MAC-C
 pack cartridge, TRM-3
 page
 alignment, LDR-3, LDR-5, LDR-6, LDR-7, LDR-8
 Fault, PRM-4
 Table (PTE), PRM-4
 pages remaining, ONG-2
 paper tape punch drivers, SYSM-4
 parameter
 input, ONG-2
 input phase, ONG-2, ONG-3
 passage applications, PRM-5
 string recovery, PRM-5
 syntax rules, TRM-3
 parameters, ONG-2
 parameters, common, PRM-3
 parity errors, PRM-A
 parity errors, disc, SYSM-A
 part YY, ONG-2

 partition
 assignments, changing program, SYSM-10
 assignments, program, SYSM-10
 definition phase, ONG-2, ONG-3
 definitions, changing, SYSM-10
 drivers, ONG-2
 management, SYSM-9
 REQUIRED, LDR-4, LDR-6, LDR-7
 resident drivers, ONG-B
 status - EXEC 25, PRM-2
 status summary, UTIL-2
 partition, LDR-5
 partitions,
 assignment, TRM-4
 background, PRM-1
 background, TRM-1
 considerations, PRM-4
 define, ONG-2
 mother, PRM-1, PRM-4, TRM-1
 priority, TRM-4
 real-time, PRM-1, TRM-1
 reserved, TRM-4
 shareable EMA, PRM-1, PRM-4, TRM-1
 subpartitions, PRM-4
 Pascal statement translation, OLDRE, UTIL-3
 Pascal, LDR-3, LDR-6, LDR-8, LDR-9
 Pascal, subroutines callable by, RLIB-A
 Pascal/1000, PRM-1, PRM-2, PRM-2
 passage,
 command string, PRM-J
 file, PRM-J
 string - EXEC 14, PRM-2

passing
 command string, TRM-3 TRM-4
 procedures as parameters, LDR-6
 password, TRM-2
 path, LDR-3
 path
 numbers, LDR-2, LDR-3
 overflow, LDR-6, LDR-8
 size, LDR-6
 switches, DBG-6
 pathlength and tree size, maximum, LDR-3
 PAU.E, RLIB-4
 pause and send message, TRM-3
 PAUSE, RLIB-4
 PBA, MAC-B, MAC-C
 PBB, MAC-3, MAC-B, MAC-C
 PBS, MAC-3
 PCOPY - physical backup utility, PRM-1
 PCOPY, UTIL-6
 pending
 class request, PRM-2
 spool files, BSP-5
 performance considerations, FC, UTIL-4
 peripheral
 resource usage, SYSM-2
 subchannels, SYSM-4

 permanent
 loads, LDR-4
 programs, LDR-1, LDR-4, TRM-3
 program usage, ONG-2
 PERR6, ONG-B
 PF (profile), LDR-5
 physical
 backup utilities, UTIL-6
 memory, PRM-1, PRM-4
 memory organization, ONG-B
 read or write, PRM-3
 tracks reserved for spares, UTIL-8
 PK command, TRM-3
 PL option, WHZAT, UTIL-2
 planning
 introduction, ONG-2
 the account structure, SYSM-3
 plus sign, DBG-A
 PNAME, RLIB-4
 pool cartridges, PRM-1, TRM-3, SYSM-3
 port maps, PRM-1
 positioning files, PRM-3
 POSNT FMP call, PRM-3
 POST FMP call, PRM-3
 postamble, data block, UTIL-A
 potential offpath references - see offpath reference

power fail, PRM-1
 power fail/auto restart, PRM-E, SYSM-4
 PR command, TRM-4
 preamble, data block, UTIL-A
 preliminary command file, LDR-3, LDR-6, LDR-8
 preorder, LDR-3, LDR-4, LDR-6
 print
 mode, temporarily change, DBG-3
 momentarily in master mode, DBG-2
 time, TRM-4
 printout as numeric constants, DBG-2
 printout as symbolic instructions, DBG-2
 priority assignment, BSP-2
 priority, program, PRM-1
 private cartridges, PRM-1, PRM-3, TRM-2, TRM-3, SYSM-3
 privilege interrupt select code, ONG-2 , ONG-3
 privileged
 commands, TRM-3, TRM-4
 fence, PRM-1
 GASP commands, BSP-5
 interrupts, PRM-1
 subroutine structure, RLIB-1
 privileged, RLIB-1
 PRMPT, SYSM-3
 PRMPT program, TRM-4
 procedure files, BSP-2, PRM-3, TRM-3
 processing of system and break-mode commands, TRM-4
 profile
 option, LDR-1, LDR-2, LDR-4, LDR-7
 output, LDR-4

 program
 addition, commands, LDR-2
 completion - EXEC 6, PRM-2
 GASP, BSP-4
 ID segment, PRM-C, SYSM-B, TRM-C
 input phase, ONG-2, ONG-3
 JOB, BSP-2
 linkage instructions, MAC-4, MAC-B
 load and verify, DBG-C
 load, DBG-4, LDR-2, ONG-2
 location counter, MAC-1, MAC-2, MAC-4
 management error codes, PRM-A
 managment EXEC calls, PRM-2
 page requirements FORMT, UTIL-8
 partitions, ONG-B
 partition assignments, SYSM-10
 related tables, PRM-D
 relocatable space, MAC-1, MAC-4
 relocation, MAC-1
 relocation and linking, LDR-1, LDR-2
 scheduling - EXEC 9,10,23, and 24, PRM-2
 segment load - EXEC 8, PRM-2

segment summary, UTIL-2
 size, LDR-2
 size command, TRM-4
 state lists, TRM-4
 states, PRM-D, TRM-4, UTIL-2
 status, TRM-4
 status summary, UTIL-2
 suspend - EXEC 7, PRM-2
 suspension messages, UTIL-2
 swapping control - EXEC 22, PRM-2
 termination, LDR-2
 time scheduling, PRM-2
 types, LDR-2, LDR-3, LDR-4, MAC-4, PRM-1, PRM-2, PRM-D, TRM-1
 program-to-program communication, PRM-5
 programmatic scheduling, return parameters for, LDR-4
 programming aids, MAC-1
 programs,
 background, TRM-1
 disc-resident, TRM-1
 execution, TRM-3 TRM-4
 father and son, PRM-2
 operator suspend, TRM-4
 partitions, PRM-1, TRM-1, TRM-4
 permanent, TRM-3
 priority, PRM-1, TRM-4
 real-time, TRM-1
 reschedule, TRM-1
 schedule at interval time, TRM-4
 scheduling, TRM-1 TRM-4
 segmentation, PRM-1, TRM-1
 swapping, PRM-2
 temporary, TRM-3
 terminate with OF command, TRM-3 TRM-4
 types, LDR-2, LDR-3, LDR-4, MAC-4, PRM-1, PRM-2, PRM-D, TRM-1
 protect switch disc drive, UTIL-6
 PRSTR - physical backup utility, PRM-1, UTIL-6
 PRTM subroutine, PRM-5, RLIB-5
 PRTN subroutine, PRM-5, RLIB-5
 PSAVE - physical backup utility, PRM-1, TUIL^6
 pseudo operations, MAC-2, MAC-4, MAC-B
 PSTVM subroutine, PRM-4
 PTAPE, RLIB-4
 PTERR, RLIB-5
 PU command, TRM-3
 purge
 file, TRM-3
 FMP call, PRM-3
 source-file option, FC, UTIL-4
 type 6 files, SYSM-5
 purging accounts, SYSM-8
 PURVM subroutine, PRM-4
 pushbutton save/restore data verification, UTIL-6

Q

QU command, TRM-4
queue depth, BSP-5
queue for outpooling, BSP-3
queue schedule, with or without wait, PRM-2

R

R\$PN\$, SYSM-3, TRM-4
RAL, MAC-3, MAC-B, MAC-C
RAM, MAC-C, MAC-L
random file access, PRM-3
RAR, MAC-3, MAC-B, MAC-C
RBL, MAC-3, MAC-B, MAC-C
RBR, MAC-3, MAC-B, MAC-C
RE (relocate), LDR-3, LDR-5
RE error, PRM-A
RE off-line restore, calling interactively, UTIL-6
RE reformat a disc, FORMT, UTIL-8
re-entrant I/O, PRM-1, TRM-4
read
 call - EXEC 1, PRM-2
 verification, UTIL-6
READF FMP call, PRM-3
READT (restore disc utility), PRM-1, TRM-1, UTIL-5
real time disc usage, SYSM-A
REAL, RLIB-2
real-time
 and background map, ONG-B
 clock, TRM-4
 COMMON, ONG-B, ONG-B
 partition, TRM-1
 program, LDR-2, TRM-1, UTIL-2
reconfiguration process, off-line backup utilities, UTIL-6
reconfiguration, SYSM-10
record, PRM-3, TRM-3
record formats, PRM-I, TRM-3
record position, BSP-3
recover
 parameter string, PRM-5, RLIB-5
 unused space option, FC, UTIL-4
recursion, MAC-5
recursion and offpath references, LDR-3, LDR-6
redefinition of opcodes, MAC-5
reducing
 links, LDR-8
 load time, LDR-6, LDR-8
 path size, LDR-8
reentrant
 I/O processing, ONG-2

I/O subroutine REIO, RLIB-5
 subroutine processing, ONG-2
 subroutine structure, RLIB-1
 referencing devices off-line, UTIL-6
 reformat
 a disc (RE), UTIL-8
 current time, RLIB-5
 register
 reference, alter/skip group, MAC-3, MAC-B
 reference, shift/rotate group, MAC-3, MAC-B
 register reference instructions, MAC-3, MAC-B
 registers,
 map, DBG-C
 special, DBG-C
 REIO, BSP-3
 release
 disc tracks, TRM-4
 reserved partition, TRM-4
 tracks, TRM-3
 RELOC, MAC-1, MAC-4, MAC-B, MAC-C
 relocatable
 assembly, MAC-E
 code, LDR-1, MAC-1
 expressions, MAC-2
 indexer, see INDXR
 program, MAC-4
 record formats, MAC-1, PRM-I
 spaces, MAC-1
 relocate command, LDR-5, ONG-2
 relocating loader (LOADR), LDR-9, TRM-1
 relocation
 base, LDR-2, LDR-3
 commands, LDR-2
 removable cartridges, TRM-3
 rename file, TRM-3
 REP, MAC-C, MAC-L
 REPEAT, MAC-4, MAC-B, MAC-C
 replace duplicate files option, FC, UTIL-4
 replacement
 driver specification, UTIL-9
 formats, MAC-3
 replacing permanent programs, LDR-2
 request error explanation, TRM-3
 required partition size, LDR-2
 requirements for program loading, LDR-2
 reschedule program, TRM-4
 RESOLVE (system macro), MAC-K
 resource
 management, PRM-1, TRM-1
 management subroutine RNRQ, PRM-5, RLIB-5
 numbers (RN), PRM-1, PRM-5
 response preparation, ONG-2
 responses and comments, ONG-3

restart session FMGR, TRM-4
restore
 disc cartridge, READT, UTIL-5
 program, TRM-3 TRM-3
 tape file (RE), UTIL-6
restrictions, DBG-6
retrieve record position, BSP-3
return
 parameter subroutines, PRM-5
 parameters for programmatic scheduling, LDR-4
reverse COMMON - see COMMON
RMPAR - Retrieve Parameters, BSP-3, LDR-4, PRM-5, RLIB-4
RN command, TRM-3
RNRQ, PRM-5, RLIB-5
root node, LDR-3, LDR-7
ROTATE (system macro), MAC-K
rotating base page, LDR-4
routines
 callable from FORTRAN, RLIB-1
 callable from Pascal, RLIB-1
routines, format of, RLIB-1
RP command, TRM-3
RPL, MAC-4, MAC-B, MAC-C
RPL instruction translation, UTIL-3
RPL's, LDR-6
RQ error, PRM-A
RRL, MAC-3, MAC-B, MAC-C
RRR, MAC-3, MAC-B, MAC-C
RS
 - restart spool, BSP-4
 command, TRM-4
RSA, MAC-3, MAC-B, MAC-C
RSB, MAC-3, MAC-B, MAC-C
RSS, MAC-3, MAC-B, MAC-C
RT
 - see Real-Time
 command, TRM-3 TRM-4
 disc-residents, ONG-2
 memory lock, ONG-2, ONG-3
RT6GN - on-line generator, PRM-1
RTCOM, ONG-B
RTE
 general description, TRM-1
 On-Line Generator, ONG-1
RTE-6/VM
 memory organization, ONG-B
 system disc layout, TRM-C, SYSM-B
 system generation example, ONG-3
RTEMA, ONG-B
RTERR, ONG-B
RTIME, ONG-B
RTIOQ, ONG-B
RU command, TRM-3 TRM-4

RU command, implied, TRM-3
run
 program, TRM-3 TRM-4
 string parameters, MAC-E
runstring
 mode, FORMC, UTIL-8
 parameters, SGMTR, LDR-6
RVA, MAC-3, MAC-B, MAC-C
RVB, MAC-3, MAC-B, MAC-C
RW, rewind tape, physical backup utility, UTIL-6
RWDF FMP call, PRM-3

S

S Globals, TRM-3
S option, FC, UTIL-4
SA (save), LDR-5
SA command, TRM-B
SA, calling interactively, UTIL-6
SAE, MAC-3, MAC-B, MAC-C
SAM extension reconfiguration, SYSM-10
sample
 answer file, ONG-E
 calling sequence and node tree, LDR-3
 command file, LDR-3
 generation, ONG-3
 program loadmaps, LDR-4
 program SGMTR output, LDR-D
 program source code, LDR-D
 program SXREF output, LDR-D
 trace of MLLDR processing, LDR-3
 worksheet conventions, SYSM-4
save
 definition record, UTIL-6
 disc to tape (SA), UTIL-6
 program, TRM-3
 relocatable space, MAC-1, MAC-4
 to purge, change, BSP-3
SAVE,
 area, LDR-4, LDR-7
 labeled COMMON, LDR-6
 loader command, LDR-5
 variable, LDR-6
saving resources termination, LDR-2
saving-resources completion, PRM-2
SAX, MAC-3, MAC-B, MAC-C
SAY, MAC-3, MAC-B, MAC-C
SBE, MAC-3, MAC-B, MAC-C
SBS, MAC-3, MAC-B, MAC-C
SBT, MAC-3, MAC-B, MAC-C
SBX, MAC-3, MAC-B, MAC-C
SBY, MAC-3, MAC-B, MAC-C

SC, scratch area definition, FC, UTIL-4
 SCB, SYSM-3, SYSM-C
 SCHED6, ONG-B
 schedule
 a program, TRM-4
 call error codes, PRM-A
 scheduled list, PRM-1
 scheduling
 configurator, SYSM-10
 FMGR interactively, TRM-D
 FMGR programmatically, PRM-J
 SCOM programmatically, UTIL-2
 string passage, ONG-2
 scheduling,
 circular, TRM-1
 linear, TRM-1
 PRM-1
 SCOM (file comparison utility), PRM-1, TRM-1, UTIL-2
 scratch
 area definition: SC, UTIL-4
 files, PRM-3
 SD - shut down spooling, BSP-4
 SE (search), LDR-3, LDR-5
 SE command, TRM-3
 search
 commands, LDR-4, LDR-5, LDR-9
 mask, DBG-5
 processing, LDR-3, LDR-4, LDR-5, LDR-6, LDR-9
 sector, TRM-3, UTIL-A
 sector/track value differences, READT, UTIL-5
 security code, PRM-3, TRM-3
 SEGLD, LDR-2, LDR-9, RLIB-5
 segmentation
 and loading tools, LDR-2, LDR-6
 in previous operating systems, LDR-2
 multi-level, PRM-1
 options, LDR-6
 programmatically, PRM-1, PRM-2
 restrictions, LDR-3, LDR-6
 utility SGMTR, LDR-6
 segmented programs, TRM-3
 select
 code assignments, SYSM-4
 codes, I/O, PRM-1, UTIL-9
 selective assembly, MAC-E
 self time scheduling, PRM-2
 semicolon, BSP-2
 send
 message to list device, TRM-3
 message to session user, TRM-3
 message to system console, RLIB-5, TRM-3
 sequential files, PRM-3
 serially reusable termination, LDR-2

serially reusable completion, PRM-2
 session
 account file, SYSM-3
 account planning, SYSM-3
 cartridge allocation and access, TRM-3
 concept, SYSM-3
 Control Block (SCB), BSP-2, PRM-1, PRM-H, TRM-2, TRM-3, TRM-C,
 SYSM-3, SYSM-C
 environment, SYSM-3
 file management system, SYSM-3
 identification number, TRM-2
 log-on/log-off processors, SYSM-3
 LU, BSP-3, PRM-1
 LU allocation worksheet, SYSM-7
 LU definition, SYSM-7
 mode, TRM-2
 Monitor, PRM-1, PRM-3, TRM-1, TRM-2, SYSM-1, SYSM-4
 monitor account file, SYSM-8
 monitor components, SYSM-3
 monitor system control, SYSM-8
 Monitor, cartridge structure, TRM-1
 operating system, SYSM-3
 or batch environment, BSP-2
 Switch Table (SST), BSP-2, BSP-3, BSP-4, PRM-1, PRM-H, TRM-1,
 TRM-2, TRM-3, TRM-4, TRM-C, SYSM-3, SYSM-C
 word (32), SYSM-B, TRM-C
 session-related data structure, TRM-2
 SESSN, RLIB-5
 set
 break flag, TRM-4
 global parameters, TRM-3
 or clear memory, DBG-5
 real-time clock, TRM-4
 the location counter, DBG-3
 SETBIT (system macro), MAC-K
 setting
 a breakpoint MLLDR, DBG-6
 tape device off-line, FC, UTIL-4
 setup
 buffer, BSP-3
 spool file for I/O device, TRM-3
 with SPOP, BSP-3
 severity code, BSP-2, TRM-3
 SEZ, MAC-3, MAC-B, MAC-C
 SFB, MAC-3, MAC-B, MAC-C
 SFC, MAC-3, MAC-B, MAC-C
 SFS, MAC-3, MAC-B, MAC-C
 SGMTR
 - MLLDR command file utility, PRM-1, LDR-3, LDR-6, LDR-8
 error messages, LDR-A
 sample output, LDR-D

SH
 (shareable EMA), LDR-5
 loader command, PRM-4
shareable
 EMA partition table, SYSM-E
 EMA partitions, ONG-2, ONG-3, PRM-1, PRM-2, PRM-4, TRM-1, TRM-4
 EMA, LDR-1, LDR-2, LDR-4
 EMA programs, ONG-2
shared
 base page, LDR-4
 logical address space, LDR-3
shift-rotate group, MAC-3, MAC-B
short
 ID handler, SYSM-6
 ID segments, ONG-3, PRM-C, TRM-C, SYSM-B
shortening the command file, LDR-6
SIGN, RLIB-2
SIN, RLIB-2
single-level segmentation, LDR-1, LDR-9
Single-volume copy option, FC, UTIL-4
SIO Record Format, PRM-I
size of spool files, BSP-5
SJP, MAC-3, MAC-B, MAC-C
SJS, MAC-3, MAC-B, MAC-C
Skip option, FC, UTIL-4
SKP, MAC-4, MAC-B, MAC-C
SL
 (search user libraries), LDR-3, LDR-5
 command, TRM-3 TRM-4
 hold attribute, BSP-2
SL, spool setup and outspool control, BSP-2
SLA, MAC-3, MAC-B, MAC-C
SLB, MAC-3, MAC-B, MAC-C
SM
 command, TRM-3
 option, WHZAT, UTIL-2
SMP
 calls, BSP-3
 error messages, BSP-A
 program calls, BSP-1
SMP, BSP-1, BSP-2
SNGL, RLIB-2
SNGM, RLIB-2
SOC, MAC-3, MAC-B, MAC-C
SOCC, MAC-B, MAC-C
soft
 key command set dump, UTIL-2
 key programming, UTIL-2
 parity errors, PRM-A
softkey command set, modifying an existing, UTIL-2
software
 components and resource requirements, SYSM-4
 replacements, MAC-3

- son
 - node, LDR-3
 - program, PRM-2
 - SOS, MAC-3, MAC-B, MAC-C
 - SOSC, MAC-B, MAC-C
 - source
 - file, MAC-1, MAC-E
 - record formats, PRM-I
 - statements, MAC-2
 - source, destination parameter considerations, FC, UTIL-4
 - SP command, TRM-3
 - SP, spare command, FORMT, UTIL-8
 - spare
 - cartridge pool, SYSM-3, SYSM-8, TRM-3
 - tracks, SYSM-4
 - sparing, UTIL-A
 - SPC, MAC-4, MAC-B, MAC-C
 - special
 - purpose cartridges, SYSM-3
 - register modification and examination, DBG-3
 - registers, DBG-C
 - speeding up the COPY operation, TRM-3
 - SPLCON, BSP-2, BSP-3, BSP-5
 - SPOL01-SPOL80, BSP-2, BSP-3
 - SPOLnn, BSP-2
 - spool
 - call example, BSP-3
 - control, BSP-3
 - control file, BSP-2
 - driver (DVS43), BSP-2
 - EQT's, BSP-3, BSP-5
 - files, BSP-1, BSP-2, BSP-5
 - files buffering, BSP-3
 - files manipulation, BSP-4
 - files state diagram, BSP-4
 - header format, BSP-2
 - I/O abort errors, BSP-A
 - logical units, BSP-2
 - LU, BSP-2
 - monitor, TRM-1
 - monitor program (SMP), BSP-2
 - options, change, BSP-3
 - POOL FILES, BSP-2, BSP-5
 - positioning, BSP-3
 - setup, BSP-2, BSP-3
 - system, BSP-1
 - system initialization, SYSM-6
 - system manipulation, BSP-4
 - spooling
 - batch job, BSP-2
 - CS command, TRM-3
 - interactively, BSP-2
 - program, BSP-2

S globals, TRM-3
 SL command, TRM-3
 spool files, TRM-3
 spool LU, TRM-3
 system, BSP-1, PRM-1, SYSM-4
 SPOPN, BSP-2, BSP-3
 SPOPN, call, BSP-3
 SPOUT, BSP-1, BSP-2, BSP-3
 SQRT, RLIB-2
 SREAD, RLIB-4
 SS command, TRM-4
 SSA, MAC-3, MAC-B, MAC-C
 SSB, MAC-3, MAC-B, MAC-C
 SSM, MAC-3, MAC-B, MAC-C
 SST, SYSM-3, SYSM-C
 ST command, TRM-3 TRM-4
 STA, MAC-3, MAC-B, MAC-C
 stacking, command, TRM-3
 stand-alone on-line UTILlities, generating, UTIL-6
 standard
 boot-up procedures, SYSM-6
 I/O EXEC calls, PRM-2
 I/O request flow, PRM-E
 spool file, BSP-2
 system logical units, BSP-2
 statement
 continuation, MAC-2
 length, MAC-2
 status
 EXEC calls, PRM-2
 interrogation, SCOM, UTIL-2
 utility (WHZAT), UTIL-2
 STB, MAC-3, MAC-B, MAC-C
 STC, MAC-3, MAC-B, MAC-C
 STCC, MAC-B, MAC-C
 STF, MAC-3, MAC-B, MAC-C
 STO, MAC-3, MAC-B, MAC-C
 STOP (system macro), MAC-K
 storage allocation, MAC-4, MAC-B
 string
 comparison, MAC-4
 passage - EXEC l4, PRM-2
 STX, MAC-3, MAC-B, MAC-C
 STY, MAC-3, MAC-B, MAC-C
 SU - start up spooling, BSP-4
 subchannel
 definition, UTIL-6
 initialization, SYSM-5
 numbering, SYSM-4
 size, SYSM-4
 xx assigned, ONG-2
 subchannel, PRM-1, TRM-4
 SUBHEAD, MAC-4, MAC-B, MAC-C



subheading, MAC-4
subpartitions, PRM-4, ONG-2
subroutine ABREF, PRM-2
subroutine LKEMA, PRM-4
subroutine operations, MAC-K
subroutine ULEMA, PRM-4
subroutines, LDR-2, LDR-3
subroutines,
 Double Integer, RLIB-3
 return parameter, PRM-5
 system library, PRM-5
 VMA/EMA, PRM-4
 VMA/EMA mapping management, PRM-B
substring attribute, MAC-4
subsystem global area (SSGA), ONG-2, ONG-B, PRM-1
SUBTRACT (system macro), MAC-K
subtraction, MAC-2
SUP, MAC-4, MAC-B, MAC-C
suspend program - EXEC 7, PRM-2
SV
 - severity level definition, LIF, UTIL-7
 command, TRM-3
swap delay, ONG-2, ONG-3
swapping
 control - EXEC 22, PRM-2
 programs, PRM-2
swapping, mother partition, PRM-4
SWP, MAC-3, MAC-B, MAC-C
SWTCH program, ONG-1, SYSM-5
SXB, MAC-3
SXREF
 - MLLDR command file utility, PRM-1
 error messages, LDR-A
SXREF, LDR-6, LDR-D
SY
 (system library name), LDR-3, LDR-5
 command, TRM-3
SYA, MAC-3, MAC-B, MAC-C
SYB, MAC-3, MAC-B, MAC-C
SYCON, RLIB-5
symbol, DBG-1
symbol
 definition instructions, MAC-4, MAC-B
 manipulation, DBG-C
 table, DBG-2, MAC-1, MAC-E
symbolic
 addresses in DBUGR, DBG-2
 addressing, MAC-1
 mode, DBG-2
 terms, MAC-2
syntax checking mode (SXREF), LDR-6
system
 and break-mode commands, TRM-4

and break-mode error messages, TRM-A
 and program loading phase, ONG-2, ONG-3
 applications, SYSM-2
 assembly-time variables, MAC-J
 Available Memory (SAM), BSP-2, BSP-5, ONG-2, ONG-B, PRM-1,
 PRM-2, TRM-4

 backup, SYSM-4
 base page, ONG-B, PRM-1
 boundaries phase, ONG-2, ONG-3
 BReak command, response to, UTIL-8
 cartridge directory, PRM-3
 cartridges, PRM-1, PRM-3, TRM-2, TRM-3
 cartridges, auxiliary, TRM-3
 command errors, TRM-A
 commands, TRM-4
 communication area, PRM-C, SYSM-B
 console as session terminal, SYSM-9
 console operation, TRM-2
 console, commands, TRM-2 TRM-4
 disc layout, RTE-6/VM, PRM-C, SYSM-B
 disc model, ONG-2
 Driver Area (SDA), ONG-B
 driver area, PRM-1
 generation, SYSM-1
 generation overview, SYSM-4
 generation response preparation, SYSM-4
 global cartridge requirements, SYSM-3
 initialization, SYSM-1
 installation, SYSM-1
 libraries, PRM-1, PRM-3, SYSM-4
 library subroutines, PRM-5
 loading, ONG-2
 LU, PRM-1
 macro library, MAC-K
 macros descriptions, MAC-K
 maintaining, SYSM-1
 management overview, SYSM-1
 Manager, PRM-3
 map, ONG-B, PRM-1
 modules, ONG-2, ONG-B
 planning, SYSM-1
 prompt, TRM-4
 protection, SYSM-6
 scratch tracks, PRM-3, TRM-3
 security, TRM-3
 subchannel, ONG-2, ONG-3
 subchannel definition, SYSM-5
 subchannel, SYSM-4
 tests, SYSM-6
 track allocation, SYSM-6
 utilities, SYSM-4
 utility programs, TRM-1
 system/auxiliary subchannels, SYSM-4

SZ

(size), LDR-5
command, TRM-4
SZA, MAC-3, MAC-B, MAC-C
SZB, MAC-B, MAC-C

T

T option, FC, UTIL-4
T5IDM, LDR-9, SYSM-6
table
 area I, ONG-B, PRM-1
 area II, ONG-2, ONG-B, PRM-1
 generation phase, ONG-2, ONG-3
tables, program related, PRM-D
tables
 and directories, TRM-C
 and patches, dumping, DBG-4
TAN, RLIB-2
TANH, RLIB-2
tape
 data verification, UTIL-6
 device lock, unlock, FC, UTIL-4
 format, FC, UTIL-4
 formatting., UTIL-8
 handling, FC, UTIL-4
 positioning, UTIL-6
 protection, FC, UTIL-4
 read verification, FC, UTIL-4
 verification, DBG-4, UTIL-5
 write verification, FC, UTIL-4
Tape-length-required display option, FC, UTIL-4
target
 disc LU, SYSM-5
 select code, SYSM-5
TATMP, map track assignment table in user's map, RLIB-5
TBG select code, ONG-2, ONG-3
TBS, MAC-3, MAC-B, MAC-C
TE command, TRM-3 TRM-4
temporarily change to the print mode, DBG-3
temporary
 data block (TDB), TRM-4
 program, LDR-1, LDR-4, TRM-3
 program storage, TRM-B
 program usage, ONG-2
terminal
 control, TRM-3
 driver DVR00, SYSM-4
 driver DVR05, SYSM-4
terminate
 program, TRM-3 TRM-4
 session, TRM-3

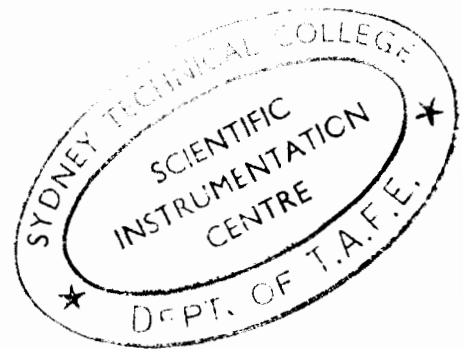
terminating the COPY operation, TRM-3
 terminating,
 saving-resources completion, PRM-2
 serially-reusable, PRM-2
 termination messages, abnormal, SYSM-5
 termination,
 command input, LDR-5
 normal, PRM-2
 program, LDR-2
 test RLIB-breakflag subroutine IFBRK, RLIB-5
 TESTBIT (system macro), MAC-K
 TEXT
 (system macro), MAC-K
 and message, text definition, MAC-K
 files, UTIL-2
 TI
 command, TRM-4
 error, PRM-A
 TI, title command, FC, UTIL-4
 time
 list, TRM-1 TRM-4
 quantum, PRM-1
 request - EXEC 11, PRM-2
 scheduling, PRM-2, TRM-1
 slicing, SYSM-9
 time-out device, TRM-4
 timeslice
 quantum, TRM-4
 word, TRM-C
 timeslicing, TRM-1 TRM-4
 timeslicing and multiprogramming, PRM-1
 title command, TI, UTIL-4
 title, maximum length, FC, UTIL-4
 TL - set run time limit, BSP-2
 TM command, TRM-4
 TIVAL, RLIB-5
 TO command, TRM-4
 TR
 (transfer), LDR-5
 command, TRM-3
 command, FC, UTIL-4
 error, PRM-A
 track
 allocation - EXEC 4 or 15, PRM-2
 assignment summary, UTIL-2
 Assignment Table (TAT), PRM-2
 assignment table log utility, UTIL-2
 configuration for 12821A ICD disc interface, SYSM-A
 configuration for MAC disc, SYSM-A
 configuration, SYSM-A
 information, bad, SYSM-5
 management EXEC calls, PRM-2
 map redefinition, UTIL-6

- map table defining CS80, SYSM-A
- map table defining ICD, SYSM-A
- map table defining MAC disc, SYSM-A
- release - EXEC code 5 or 16, PRM-2
- switching, automatic, PRM-2
- tracks, TRM-3
- tracks,
 - global, PRM-2
 - local, PRM-2
- transfer
 - address, LDR-6
 - command (TR), ONG-1, ONG-2
 - control, TRM-3
 - data and create file, TRM-3
 - data to existing file, TRM-3
 - of control, subroutines, LDR-3
 - to input LU (TR), UTIL-6
- translation results, UTIL-3
- trap cells, PRM-E
- tree
 - size and pathlength, maximum, LDR-3
 - structure, sample, LDR-3
- TRMLU, RLIB-5
- TV interface driver DVA13, SYSM-4
- TYPE
 - (system macro), MAC-K, MAC-K
 - 0 file directory entry, PRM-G
 - 0 to type 7 files, PRM-3, TRM-3
 - 2 program, LDR-2
 - 3 program, LDR-2
 - 4 background disc-resident programs, ONG-B
 - 4 program, LDR-2
 - 5 file, LDR-1
 - 5 module, LDR-9
 - 6 file usage, ONG-2
 - 6 file, LDR-2, LDR-9
 - 6 files specification, SYSM-5
 - 6 files, SYSM-5
 - 6 program, LDR-2
 - 8 and greater files, TRM-3
 - and STOP, communication with RTE, MAC-K
 - attribute, MAC-4
- types
 - greater than 7, user-defined data format, PRM-3
 - of transfers, SYSM-5

U

- U option, FC, UTIL-4
- UJP, MAC-3, MAC-B, MAC-C
- UJS, MAC-3, MAC-B, MAC-C
- UL command, TRM-4

ULEMA, unlock shareable EMA partition, PRM-4, RLIB-5
 unary operators, MAC-2, MAC-4
 unbuffered input/output, TRM-4
 undefined external reference, LDR-3, LDR-4, LDR-5, LDR-6
 unit
 save tape files, UTIL-6
 save, UTIL-6
 UNL, MAC-C, MAC-L
 unlabeled COMMON - see COMMON
 unlock EMA partition, TRM-4
 unnumbered error messages, BSP-A
 UNS, MAC-4, MAC-B, MAC-C
 Unused space recovery option, FC, UTIL-4
 UP
 - UP outspool device, BSP-4
 command, TRM-4
 update
 mode, PRM-3
 open, PRM-3
 SCB error mnemonic, RLIB-5
 upper-case attribute, MAC-4
 UR command, TRM-4
 USA, MAC-3, MAC-B, MAC-C
 usage of AWHILE, MAC-4
 USB, MAC-3, MAC-B, MAC-C
 user
 accounts, SYSM-3
 accounts definitions, SYSM-7
 buffer, PRM-3, TRM-3
 cartridge requirements, SYSM-3
 category, SYSM-2
 map, PRM-1
 message file, TRM-2 TRM-3
 names, SYSM-1
 parameter, BSP-2
 partitions, number of, ONG-1
 partitions, PRM-1
 user/group ID map, SYSM-8
 using
 AIF and AELSEIF, MAC-4
 DBUGR to do simple arithmetic, DBG-A
 FMGR globals, FC, UTIL-4
 globals in transfer files, FC, UTIL-4
 macro libraries, MAC-5
 the spool system, BSP-2
 utilities, LDR-6
 utility
 installation procedures, SYSM-6
 program CLOAD, PRM-1, TRM-1, UTIL-2
 program COMPL, TRM-1, UTIL-2
 program CMD, PRM-1, UTIL-2
 program DBUGR, TRM-1
 program DRREL, TRM-1, UTIL-9



program DRRPL, TRM-1, UTIL-9
 program EDIT/1000, PRM-1 (EDIT/1000 User's Guide)
 program FC, TRM-1, UTIL-4
 program GENIX, PRM-1, UTIL-2
 program HELP, PRM-1, UTIL-2
 program INDXR, TRM-1
 program KEYS, TRM-1, UTIL-2
 program KYDMP, TRM-1, UTIL-2
 program LGTAT, TRM-1, UTIL-2
 program LOADR, TRM-1
 program MERGE, TRM-1, UTIL-2
 program MLLDR, PRM-1
 program MLSDB, TRM-1
 program PCOPY, PRM-1, UTIL-6
 program PRSTR, PRM-1, UTIL-6
 program PSAVE, PRM-1, UTIL-6
 program READT, PRM-1, UTIL-5
 program RT6GN, TRM-1
 program SCOM, TRM-1, UTIL-2
 program SGMTR, TRM-1
 program SXREF, TRM-1
 program WHZAT, TRM-1, TRM-3, TRM-4, UTIL-2
 program WRITT/READT, TRM-1, UTIL-5
 subroutine structure, RLIB-1

V

V option, FC, UTIL-4
 VE command, FORMT, UTIL-8
 VE, verify a disc, UTIL-8
 verification
 of restore, UTIL-6
 of saves, UTIL-6
 Verify data option, FC, UTIL-4
 verify, tape, DBG-4
 Virtual Memory Area (VMA), LDR-1, LDR-2, LDR-4, LDR-5,
 LDR-7, LDR-8, PRM-4
 virtual
 memory, backing store file, PRM-4
 memory, declaring VMA array, PRM-4
 memory, I/O transfers, PRM-4
 memory, initialized, PRM-4
 memory, mapping segments (MSEG,VSEG), PRM-4
 memory, page fault, PRM-4
 memory, page table, PRM-4
 memory, programming, PRM-4
 memory, size, PRM-4
 memory, working set, PRM-4
 memory description, TRM-1
 Virtual Memory Mapping Segment (VSEG), PRM-4

VMA
- see virtual memory
subroutines, PRM-4
VMA/EMA
errors, PRM-4 , PRM-A, PRM-B
programming, PRM-4
volume, UTIL-8
VS
(VMA size), LDR-5
command, TRM-4

W

wait state messages, program, UTIL-2
waiting
for disc space, LDR-4
for list device, LDR-4
for resources, LDR-4
warning
and information reporting, LDR-4
WRQ-PGS, LDR-7
warnings (LOADR and MLLDR), LDR-4, LDR-A
WELCOM file, SYSM-6
WEXT, MAC-B
WH command, TRM-3 TRM-4
what the system Macros do, MAC-K
WHZAT - system status program, PRM-1, TRM-1, TRM-3, TRM-4, UTIL-2
wildcard characters, FC, UTIL-4
word, byte and bit-processing, MAC-B
word-processing, MAC-3, MAC-B
work file, MAC-E
working set, LDR-2, LDR-4, LDR-7, PRM-4,
worksheet, cartridge requirements, SYSM-3
write
call - EXEC 2, PRM-2
tape utility (WRITT), UTIL-5
verification, UTIL-6
write-protect switch, LDR-2
WRITF FMP call, PRM-3
writing macro definitions, MAC-5
WRITT (save disc utility), TRM-1, UTIL-5
WS
(working set size), LDR-5
command, TRM-4

X

XADSB, RLIB-2
XAX, MAC-3, MAC-B, MAC-C
XAY, MAC-3, MAC-B, MAC-C
XBX, MAC-3, MAC-B, MAC-C

XBY, MAC-3, MAC-B, MAC-C
XCA, MAC-3, MAC-B, MAC-C
XCB, MAC-3, MAC-B, MAC-C
XDBL instruction translation, UTIL-3
XE,
 entered from batch device, BSP-2
 entered interactively, BSP-2
 job input control, BSP-2
 specify input from a device, BSP-2
XEND instruction translation, UTIL-3
XENT instruction translation, UTIL-3
XEXT instruction translation, UTIL-3
XIF, MAC-C, MAC-L
XLA, MAC-3, MAC-B, MAC-C
XLB, MAC-3, MAC-B, MAC-C
XMA, MAC-3, MAC-B, MAC-C
XMB, MAC-3, MAC-B, MAC-C
XMM, MAC-3, MAC-B, MAC-C
XMS, MAC-3, MAC-B, MAC-C
XNAM instruction translation, UTIL-3
XOR, MAC-3, MAC-B, MAC-C
XPOLY, RLIB-2
XSA, MAC-3, MAC-B, MAC-C
XSB, MAC-3, MAC-B, MAC-C

