

---

# HP Peak-96 Information Manager User's Guide



---

Manual Part No.  
G1210-90100

Edition 1, October 1990  
Printed in USA

**HP Computer Museum**  
**[www.hpmuseum.net](http://www.hpmuseum.net)**

**For research and education purposes only.**

# Printing History

---

The information contained in this document may be revised without notice.

*Hewlett-Packard makes no warranty of any kind with regard to this material, including but not limited to, the implied warranties of merchantability and fitness for a particular purpose.* Hewlett-Packard shall not be liable for errors contained herein or for incidental or consequential damages in connection with the furnishing, performance, or use of this material.

No part of this document may be photocopied or reproduced, or translated to another program language without the prior written consent of Hewlett-Packard Company.

First edition—November 1990  
Printed in USA

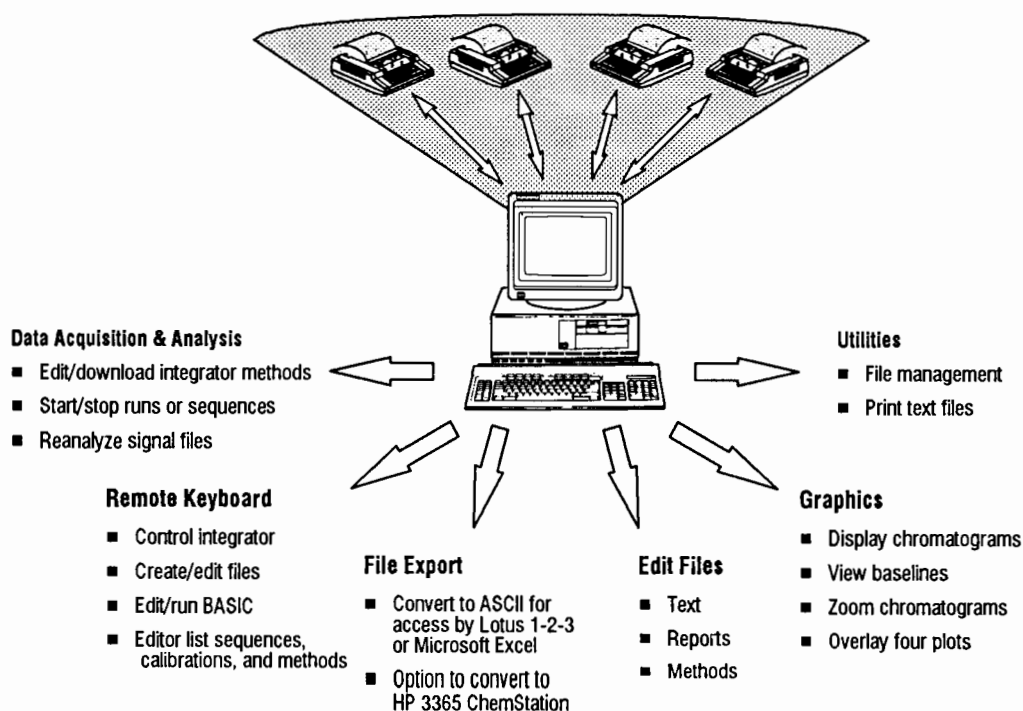
MS-DOS® and Microsoft® are registered trademarks of the Microsoft Corporation.  
IBM®-AT is a registered trademark of International Business Machines.  
Logitech™ is a trademark of Logitech.  
DigiCHANNEL MC/8™ and DigiCHANNEL MC/4™ are trademarks of DigiBoard Incorporated.

# Overview

The primary function of HP Peak-96 is to transfer files easily and automatically from the integrator to a PC. Files then may be manipulated by either the integrator or the PC within HP Peak-96.

Viewed from the integrator, HP Peak-96 is a passive program that allows the integrator user(s) to transfer files automatically or manually to the PC. All normal integrator functions remain in effect while files are being transferred to the PC for archival.

Viewed from the PC, HP Peak-96 is a foreground/background software package that allows simultaneous background file transfers to and from up to four HP 3396 and HP 3393 family of integrators. There are six main functional areas within HP Peak-96 software:



# Using this Guide

---

Everything you need is in this binder; software disks are located in plastic pockets in the rear of this binder along with the licensing agreement. Keyboard overlays and a quick reference card are included in the pockets of this binder.

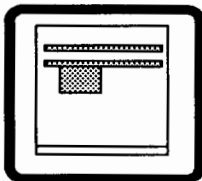
- Chapter 1 contains a 15-minute tutorial on how to use HP Peak-96.
- Chapters 2, 3, and 5 explain how to use the PC-oriented features of HP Peak-96. Chapter 4 shows < how to do familiar integrator tasks from the PC.
- Installation instructions are in Appendix A. Appendix B contains more in-depth information for the experienced HP Peak-96 user.
- Refer to chapter 6 if you encounter any problems.

# Contents

---

## Chapter 1:

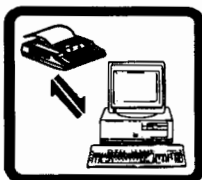
### Getting Started



This short tutorial explains the most common things you will want to do with HP Peak-96. Installation instructions are located in Appendix A.

## Chapter 2:

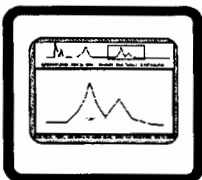
### Getting Data to the PC



This chapter shows you how to get data from your integrator to the PC, how to select and transfer methods, and how to start and stop a run or sequence. It also shows how to set up a method to store data at the PC and where it is stored.

## Chapter 3:

### Examining Data at the PC



This chapter shows you how to display reports and chromatograms and how to export data to ChemStation and ASCII formats.

## Chapter 4:

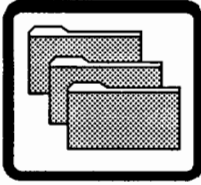
### Operating the Integrator from the PC



This chapter contains a list of integrator tasks and commands and how to do these remotely from the PC.

**Chapter 5:**

**Managing Files at the PC**



This chapter shows you how to manage integrator files at the PC.

**Chapter 6:**

**In Case of Difficulty**



This chapter shows you how to get out of trouble with a list of symptoms and how to correct them.

**Appendix A:**

**Installing HP Peak-96**



This chapter shows you how to install the HP Peak-96 hardware and software.

**Appendix B:**

**Reference Information**

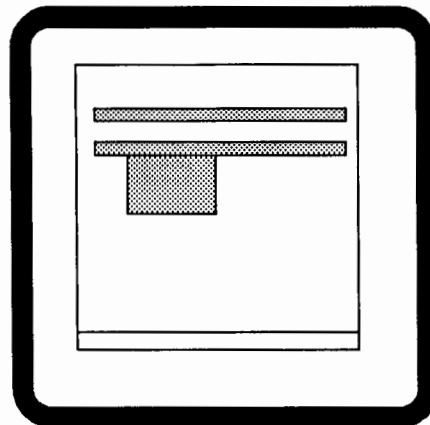


This chapter contains reference information useful for the experienced HP Peak-96 user.

**Index**

# Getting Started

---



Installation instructions are located in Appendix A.

## In this chapter....

- A Short Tutorial ..... 1-2





---

## A Short Tutorial

This tutorial takes 20 minutes to complete and introduces you to HP Peak-96. You will learn how to:

- maneuver in the program.
- get online HELP.
- use the three program screens and leave the program.

Begin the tutorial at the top level of the main screen. If you have not yet installed HP Peak-96 follow the installation instructions in Appendix A and then come back to this tutorial. If HP Peak-96 is already installed, then follow the instructions below to get to the main screen.

### Starting HP Peak-96

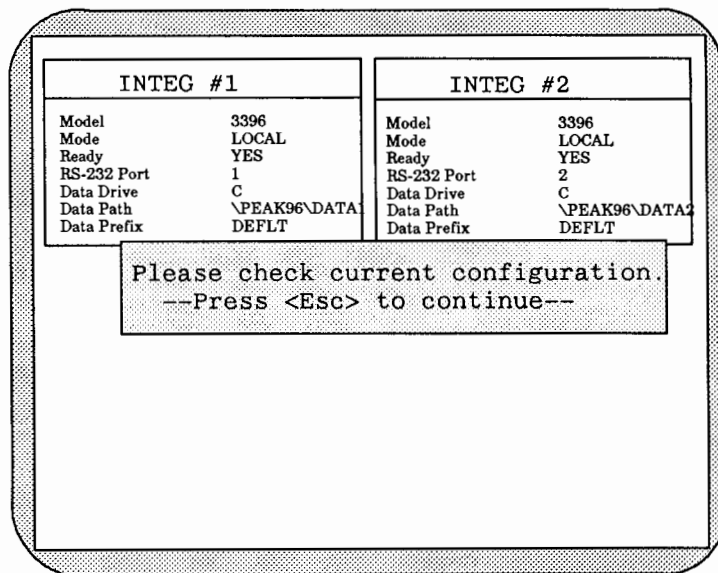
1. **Go to the directory where HP Peak-96 is installed.**

When no directory is specified during installation, the program is assigned to a directory called PEAK.

2. **Type PEAK96 and press [ENTER].**

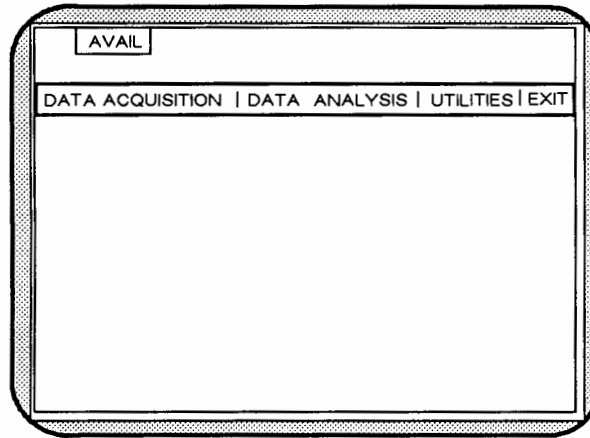
### Example

```
C:\PEAK>PEAK96
```

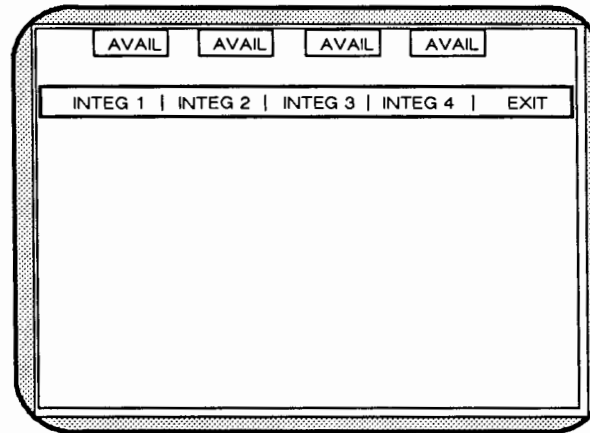


**3. Press [Esc] at the configuration screen to get to the main screen.**

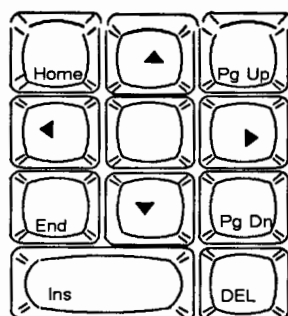
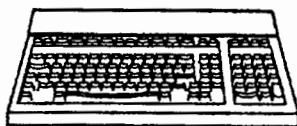
This is the main screen for one integrator.



This is the main screen for multiple integrators.

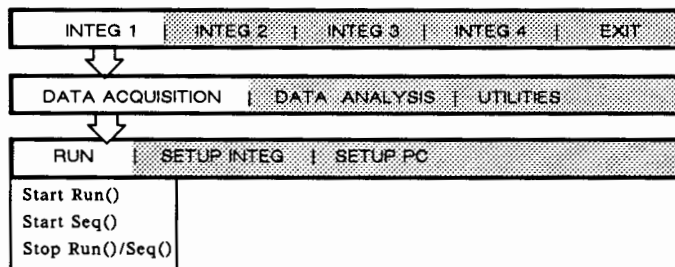


## Using the Keyboard

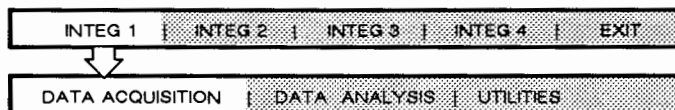


1. Use the arrow keys (or the tab key) to highlight the box for the integrator you wish to control.  
This step is not necessary if you are operating only one integrator.
2. Press [ENTER] to select that integrator.
3. Use the arrow keys to move to the desired area. Press [ENTER] to select that area.  
You can also type the letters marked in yellow to move to a desired area.
4. Press [Esc] to move back to a previous menu bar.

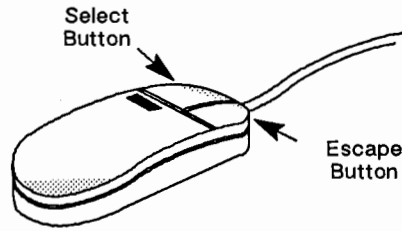
### Example



Press [Esc] twice to return to DATA ACQUISITION.



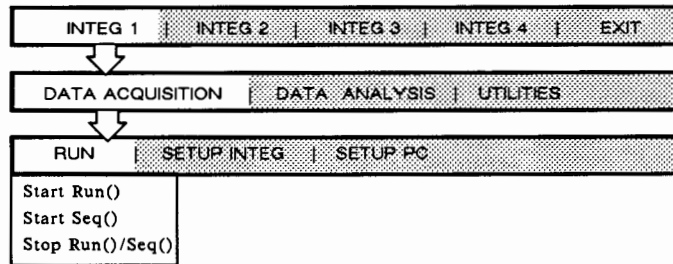
## Using the Mouse



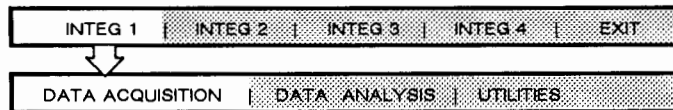
You can use the mouse to move around the menus.

1. **Move the mouse to highlight the integrator you wish to control.** This step is not necessary if you are operating only one integrator.
2. **Click the mouse button on the left to select the integrator.**
3. **Move the mouse to the area you wish to work in. Click the left-hand mouse button to select that area.**
4. **Press the right-hand mouse button to move back to a previous menu bar.**

### Example



Click the right mouse button twice to return to DATA ACQUISITION.

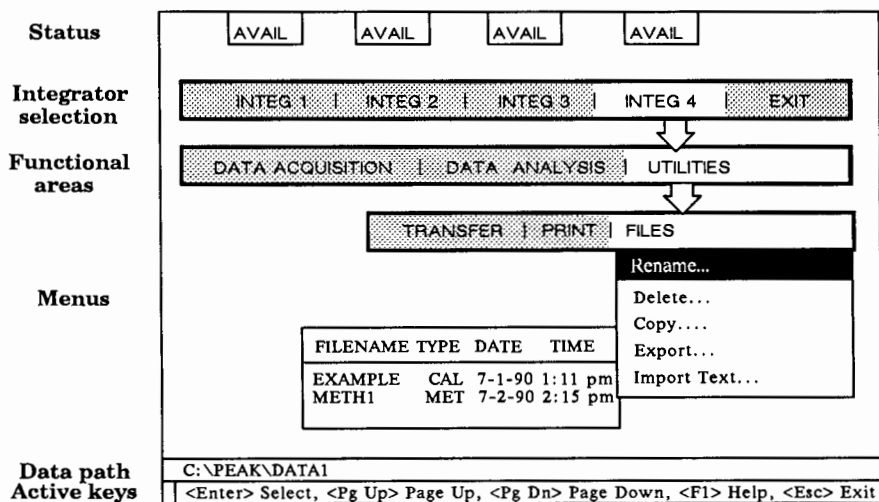


You have just learned how to maneuver in HP Peak-96. The next pages will familiarize you with getting online HELP, and the main menu, remote keyboard, and display chromatogram screens.

## Becoming Familiar with the Main Screen

From the HP Peak-96 main screen you can

- acquire data.
- analyze data.
- print text and files.
- do file transactions.
- access the remote and display screens.



1. **Select the appropriate integrator by highlighting it and pressing the left mouse button or the [ENTER] key.**

This step is not necessary if you are operating only one integrator.

2. **Select UTILITIES.**
3. **Select FILES.**
4. **Select Rename....**
5. **Press [Esc] (or the right-hand mouse button) to leave the file directory and discontinue the file renaming process.**

This procedure allows you to see a complete listing of files associated with the specified integrator.

## Status

AVAIL

The PC and integrator are available and/or the PC is occupied with a main menu activity.

BUSY

Some main menu functions are available.

UNAVAIL

The integrator is unavailable; only the current activity can proceed.

## Functional Areas

DATA ACQUISITION allows you to start and stop runs and sequences, set up the integrator method, and change the data drive and the data path name on the PC.

DATA ANALYSIS allows you to display chromatograms, reports, and text, and to reintegrate data files.

UTILITIES allows you to do file operations like transfer, rename, copy, etc, to toggle the integrator mode between local and remote, to display and use the integrator keyboard on the PC screen, to print text files and reports, and to display the current integrator status.

## Menus

Parentheses () next to a menu item indicates that an action will immediately follow when it is selected. When three dots appear after an item..., another menu will be displayed when it is selected.

Select items on the menu with the mouse or with the arrow and **[ENTER]** keys. The active key line at the bottom of the screen indicates what keys are valid in a particular menu.

## Data Path

The data path shows the current disk drive and directory for the selected integrator and is displayed when a file directory is accessed.

## Active Keys

The bottom line on the screen will show which keys are currently active.

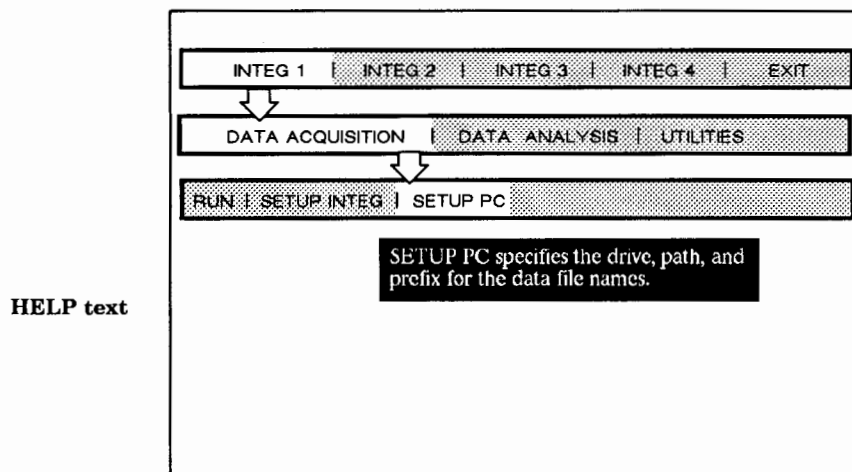
## Using the Function Keys

The keyboard overlay should be installed on your keyboard. (See installation instructions in Appendix A.) The function key side of the overlay shows you what function keys are active with the main screen.

Key	Function	What the Key Does
F1	HELP	Shows online information about main screen functions.
Alt F4	Reset Integ	Resets integrator at any time.
F5	Mark	Marks multiple files for file operations or data display.
Alt F6	Log File	Displays the current log file of PC/integrator activity.
F7	Cancel	Cancels editing changes made to text file.
F9	Insert	Toggles between insert and overwrite mode while editing text.
Alt F10	Exit	Terminates HP Peak-96 program from main screen.

## Getting Online HELP

HELP is available when you press F1 from most locations on the main screen.



1. Press [F1] at the point where you would like more information.
2. Press [Esc] to return to the main menu.

**Note:** No online HELP is available in the remote keyboard or while displaying a chromatogram.

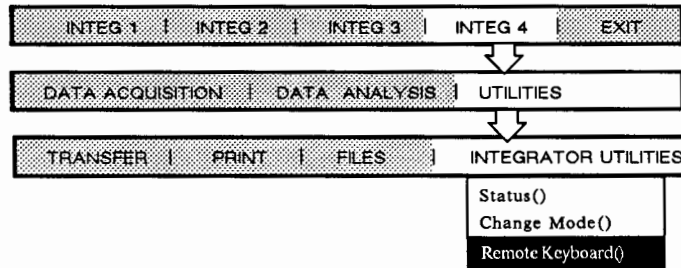


## Becoming Familiar with the Remote Keyboard Screen

The remote keyboard on the PC emulates the keyboard of the integrator. Most things you can do on the integrator keyboard you can do on the remote keyboard at the PC except for:

- starting a run or sequence
- specifying the H: disk.

The mouse and online HELP are not functional at the remote keyboard.



1. **Select the integrator you wish to use.**
2. **Select UTILITIES.**
3. **Select Remote Keyboard().**
4. **Use the [SHIFT] and function keys to select the integrator keys you want.**

Integrator keys are represented by function keys and by a few miscellaneous keys on the PC keyboard. Use the [SHIFT] key to reach to the keys indicated above the function key number. The integrator keys are also indicated on the remote keyboard overlay. Use the alphanumeric keys on the PC the way you would use them on the integrator.

Prep F1 List	Edit F2 Del	Store F3 Zero	IoAd F4 aTT 2 <sup>*</sup>	seQ F5 Cht sp	Meth F6 ar reJ	calIB F7 tHrsh	Report F8 pk Wd	area% F9 eXt()	Op() F10 Intg()

In addition, several other keys are active on the remote keyboard—these are listed at the bottom of the screen. See the illustration on the next page.

## Example

1. Press [F1], press [SHIFT] and hold while pressing [F6], and then press [ENTER] to list the current method.

The capitalized keys are accelerators and may be used in place of the function keys. Press [Alt] and the appropriate letter to get to the desired key.

Function keys  
defined for  
integrator

Prep	Edit	Store	loAd	seQ	Meth	calIB	Report	area%	Op()
F1	F2	F3	F4	F5	F6	F7	F8	F9	F10
List	Del	Zero	aTT 2^	Cht sp	ar røJ	tHrsh	pk Wd	eXt()	Intg()

Integrator chart

```
*LIST METH

RUN PARAMETERS
ZERO      = 0
ATT 2^    = 0
CHT SP    = 1.0
AR REJ    = 0
THRSH     = 0
PK WD     = 0.04

TIMETABLE EVENTS
EMPTY

CALIBRATION
NO CALIB TBL

INTEGRATION PLOT TYPE ..... FILTERED
Presentation plot ..... NO
```

Active keys

```
<^> Break, <|> Time, <[> Plot, <|> Stop, <Esc> Exit, <Tab> Integrator ESC
```

2. Press [Pg Dn] to see the entire method listing.

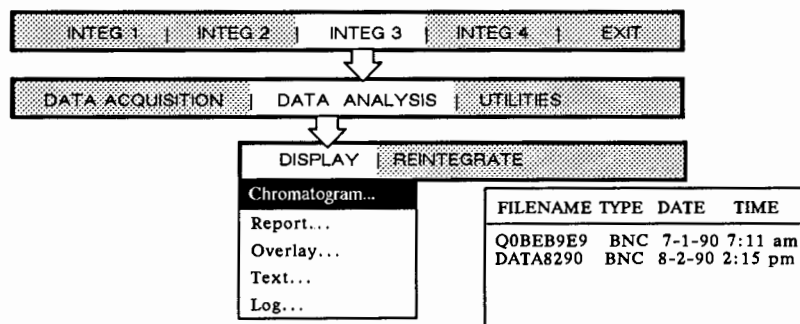
When the listing is longer than the available space on the screen, nothing more will be displayed until [ENTER] or [Pg Dn] are pressed. You can use [Pg Dn] only when the last line of the screen has characters on it. The [Pg Up] function does not work in the remote keyboard.

3. Press [Esc] to return to the main menu.

Do not try to exit the program directly from the remote keyboard.

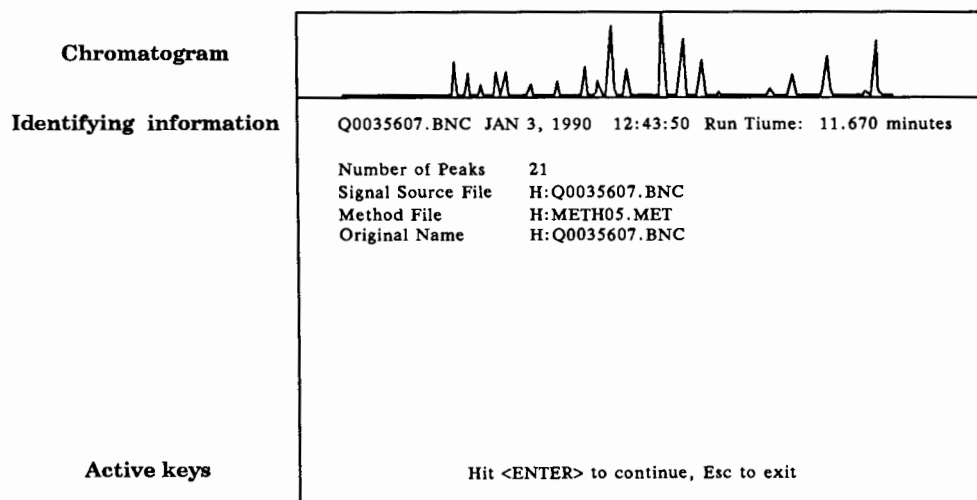
## Becoming Familiar with the Chromatogram Display Screen

Chromatograms may be displayed on your PC screen. See chapter 3 for more ways to use the display function.



1. Press [Esc] to return to the next level up on the main menu.
2. Select DATA ANALYSIS and DISPLAY.
3. Highlight one of the example data files and press [ENTER].

HP Peak-96 prints the name of the data file that is being displayed along with the date and time the data was collected and the total length of the run.



## Leaving HP Peak-96

INTEG 1	INTEG 2	INTEG 3	INTEG 4	EXIT
---------	---------	---------	---------	------

Where do you want to go?
Exit to DOS
Return to Peak96
Switch to another program

1. Use cursor control keys to highlight EXIT on the top level screen and press [ENTER].
2. Highlight the place you want to exit to and press [ENTER].

Exit to DOS takes you back to the DOS command line. If you change your mind about leaving, highlight the Return to Peak96 entry.

Pressing [Alt] [F10] allows you to exit the program from the main screen. Do not use the [CTRL] [BREAK] keys at the integrator to exit the program.

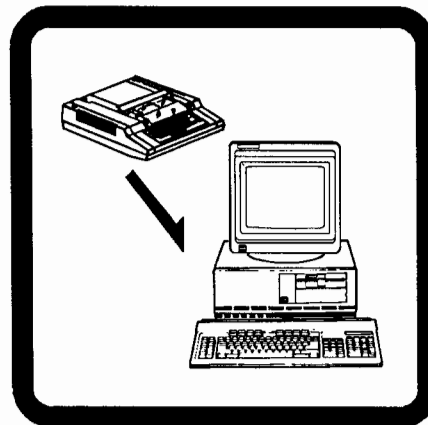
See Appendix B for information about how to set up HP Peak-96 to switch automatically to another program.





## Getting Data to the PC

---



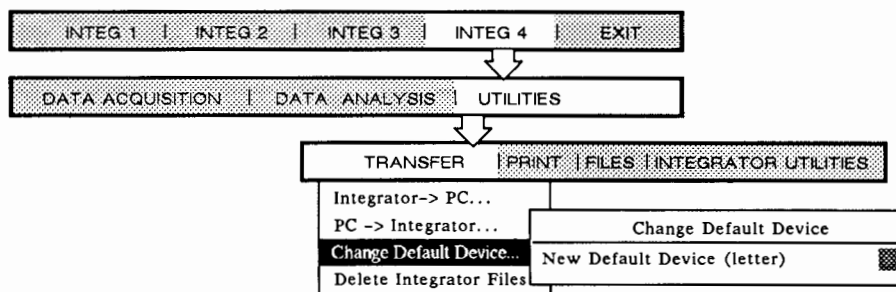
**If you are unfamiliar with how to maneuver in the program, follow the tutorial in chapter 1 before attempting to do the tasks in this chapter.**

### **In this chapter....**

- Transferring Files from the Integrator to the PC ..... 2-2
- Getting Ready for Your First Run ..... 2-4
- Starting a Run from the PC ..... 2-9
- Getting Ready for Your First Sequence ..... 2-10
- Starting a Sequence from the PC ..... 2-12

## Transferring Files from the Integrator to the PC

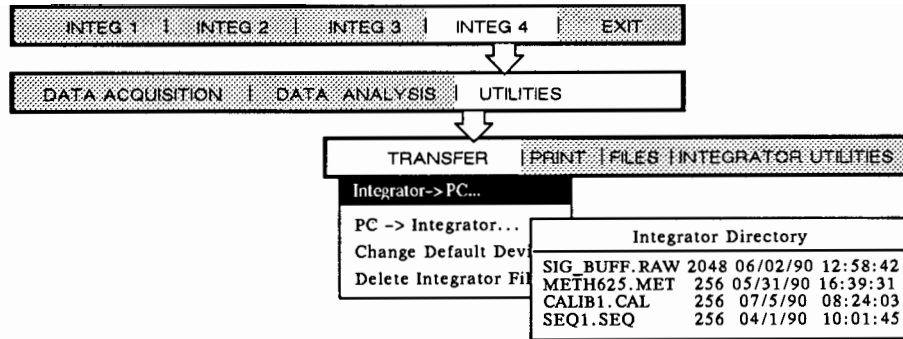
After installing HP Peak-96 you will want to move all necessary files from the integrator or disk drives onto the PC.



1. Use the arrow keys or the mouse to select the integrator.
2. Select UTILITIES.
3. Select TRANSFER.
4. Select Change Default Device....
5. Type the letter representing the disk drive you want to transfer files *from*. Press [ENTER] and then [Esc].

M represents the onboard memory of the selected integrator. All letters that represent external disk drives are valid except for E, G, H, I, O, and Q. Use the space bar to delete an incorrect entry.

If you are using an HP 3396 Series II, you can use the file manager program at the integrator to move files from the integrator to the PC.



**6. Select Integrator -> PC....**

The directory for the specified disk will appear on the screen.

**7. Use the arrow and [ENTER] keys or mouse to select the file you wish to transfer.**

The file you choose will now appear in the default PC directory for the specified integrator. (It also remains at the integrator.) To check that the file is now stored at the PC, select PC -> Integrator.... The directory for the PC will appear on the screen, and you may need to page down to find the file you just transferred. The current data path is printed at the bottom of the screen.

Remember that the disk specifier of the files you have transferred has changed. When transferred from an external disk drive to the PC, A:METH01.MET will become H:METH01.MET. (H: files cannot be specified in dialogs at the remote keyboard.)

See Appendix B for information about setting the default data path.

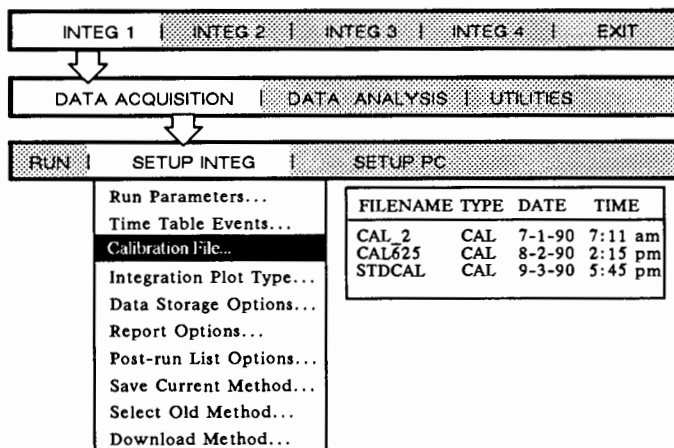


## Getting Ready for Your First Run

Before you start your first run:

- Transfer the appropriate method and calibration files to the PC.  
See the previous section for instructions for transferring files from the integrator to the PC.
- Select the method and calibration you will use.
- Check system readiness.

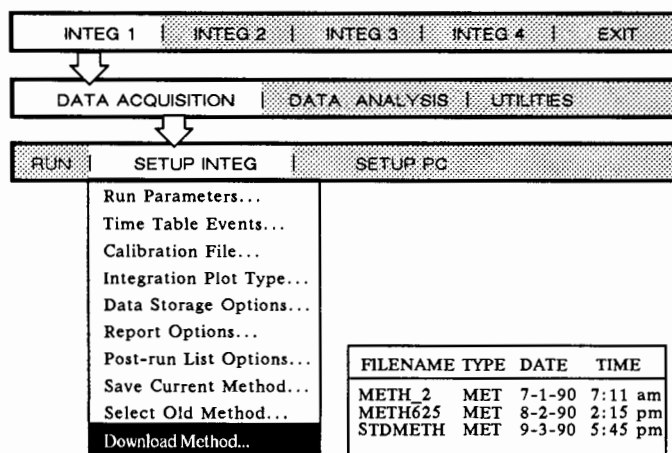
### Selecting a Calibration at the PC



1. **Select** DATA ACQUISITION **and then** SETUP INTEG.
2. **Select** Calibration File....
3. **Select the calibration file you wish to send to the integrator.**
4. **Select** Download Method....

The calibration you select before downloading the method will also be sent to the integrator.

## Selecting a Method at the PC



1. **Select** DATA ACQUISITION **and then** SETUP INTEG.
2. **Select** Download Method....
3. **Select the method file you wish to send to the integrator.**

Use HP Peak-96 to store methods for use with your integrators. Whatever method is in the active workspace of the integrator at the start of the run is the method the integrator will use. If you are not sure what method is currently in the active workspace, use the remote keyboard to list it.

Methods created on the PC do not include calibrations. If the method does not include a calibration, you may also want to select a calibration file before you download the method.

## Editing a Method at the PC

You can edit an existing method from the SETUP INTEG menu on the main screen or from the remote keyboard. Editing a method from the remote keyboard directly affects the method in the active workspace of the integrator. Methods that are edited at the PC must be saved and downloaded to the integrator before they can be used in a run or sequence. Save any methods you have edited before selecting a new integrator.

1. **Select DATA ACQUISITION and then SETUP INTEG.**

FILENAME	TYPE	DATE	TIME
METH_2	MET	7-1-90	7:11 am
METH625	MET	8-2-90	2:15 pm
STDMETH	MET	9-3-90	5:45 pm

2. **Select Select Old Method....**

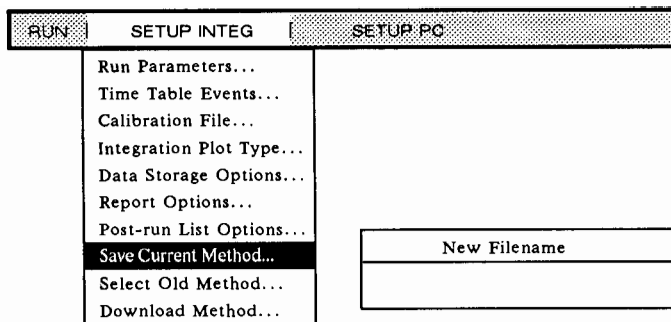
3. **Highlight the appropriate file in the method directory.**

The selected method is now accessible from the SETUP INTEG menu.

Run Parameters	
ZERO LEVEL <-6 to 100>	0
ATTENUATION <-8 to 36>	0
CHT SP <0 to 30.0> cm/min	1.0
AREA REJECTION <0 to 2E9>	0
THRESHOLD <-6 to 28>	0
PEAK WIDTH <.01 to 2.5>	0.04

4. **Make any editing changes using the SETUP INTEG menu.**

You can select a calibration file to be downloaded with this method by selecting Calibration File... and choosing from the files in the calibration directory.



5. **Select Save Current Method... to save the updated version of the method. Supply an eight-character name with .MET file extension to name the new version of the method.**

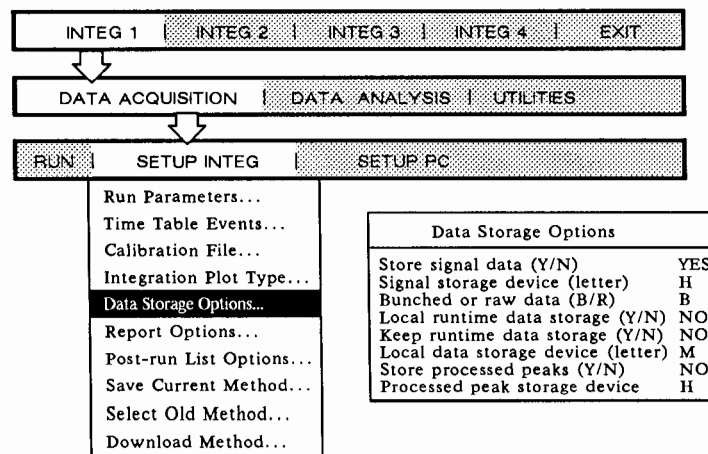
If you do not supply a new name, HP Peak-96 will ask you if you want to overwrite the current file with the new parameters.

### Example: Storing Data and Reports at the PC

You will probably want to store the data and report files from your runs and sequences at the PC. To do this you must edit the method you are using.

1. **Select DATA ACQUISITION and then SETUP INTEG.**
2. **Select Select Old Method....**
3. **Select the appropriate file in method directory.**

The selected method is now accessible from the SETUP INTEG menu.



4. **Select Data Storage Options....**
5. **Change Signal storage device to H to store data at the PC. Press [Esc] to return to SETUP INTEG menu.**

RUN	SETUP INTEG	SETUP PC
Run Parameters...		
Time Table Events...		
Calibration File...		
Integration Plot Type...		
Data Storage Options...		
Report Options...		
<b>Print &amp; Post-run List Options...</b>		
Save Current Method...		
Select Old Method...		
Download Method...		

Print & Post-Run List Options	
Large Font	YES
Store post-run report (Y/N)	YES
Post-run report storage device (letter)	H
List run parameters (Y/N)	NO
List time table (Y/N)	NO
List calibration table (Y/N)	NO
List remote method (Y/N)	NO
Form feed before report (Y/N)	NO
Form feed after report (Y/N)	NO
Skip perforations in report (Y/N)	NO
Skip perforations in plot (Y/N)	NO

6. **Select Print & Post-run List Options....**
7. **Change Store post-run report to YES.**
8. **Change the Post-run report storage device to H to store reports at the PC. Press [Esc] to return to SETUP INTEG menu.**
9. **Select Save Current Method... to save the updated version of the method. Supply up to eight characters and the .MET file extension to name the new version of the method.**

New Filename

If you do not supply a new name HP Peak-96 will ask you if you want to overwrite the current file with the new parameters.

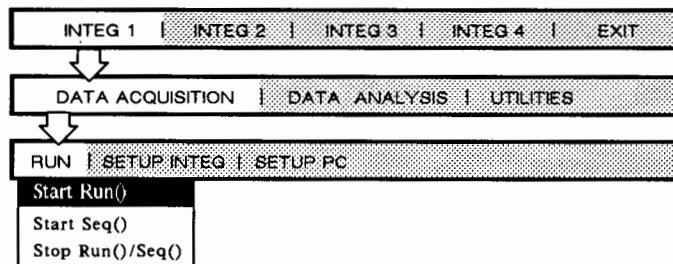
## Checking System Readiness

1. **Select UTILITIES and INTEGRATOR UTILITIES to access the remote keyboard.**
2. **Type READY in the remote keyboard to check system readiness.**

---

## Starting a Run from the PC

Chromatographic runs can be started from a menu in the main screen. If you are not sure if you are ready to start a run see “Getting Ready for Your First Run” earlier in this chapter before actually starting a run from the PC.



1. **Select the appropriate integrator.**
2. **Select DATA ACQUISITION and then RUN.**
3. **Select Start Run() to start the run.**

If you have not selected storage to the PC for data and reports, the PC will caution you and ask if you wish to proceed. See the section entitled “Storing Data and Reports at the PC” for more information.

## Stopping a Run

A run can be stopped through a timetable in the method and from the PC screen.

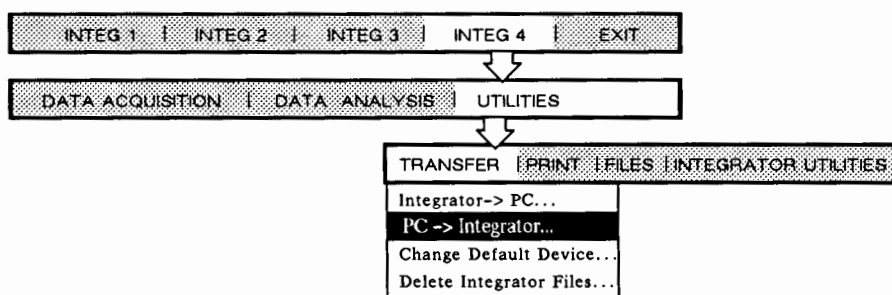
1. **Select the appropriate integrator.**
2. **Select DATA ACQUISITION and then RUN.**
3. **Select Stop Run/Seq() to stop the run.**

# Getting Ready for Your First Sequence

Before you start a sequence:

- Select the sequence you will use. Edit an existing sequence or prepare a new one on the remote keyboard, if necessary.
- Download the appropriate method(s) to the integrator.
- Reset the current run number to match the first run if the sequence is run number indexed.
- Check system readiness.

## Selecting a Sequence



1. **Transfer the sequence file you want to use from the PC to the integrator's active workspace.**
2. **Go to the remote keyboard via UTILITIES and INTEGRATOR UTILITIES.**
3. **Press [F1] and then hold the [SHIFT] key while pressing [F5] to list the sequence parameters from the remote keyboard.**

Check all methods specified in sequences to be sure disk is still correct. If all method files have been transferred from disk to PC, the A: method name will be wrong. H: method names cannot be specified in a sequence started at the PC.

4. **Edit the sequence from the remote keyboard.**

If the method specified in the sequence is stored at the PC, remove the method specification from the sequence and download the method to the integrator. See instructions for how to edit a sequence on the next page.

## Editing a Sequence at the PC

1. **Transfer the sequence file you want to use from the PC to the integrator's active workspace.**
2. **Go to the remote keyboard.**
3. **Press [SHIFT ] [F2] and then [SHIFT] [F5] to edit the sequence.**

### Example

Prep	Edit	Store	loAd	seQ	Meth	caliB	Report	area%	Op()
F1	F2	F3	F4	F5	F6	F7	F8	F9	F10
List	Del	Zero	aTT 2`	Cht sp	ar reJ	tHrsh	pk Wd	eXt()	Intg()

```
* EDIT SEQ
1 = ALS INFORMATION
2 = EQUILIBRATION TIME DELAY
3 = METHOD FILE SPECIFICATION
4 = SAMPLE INFORMATION TABLE
```

```
SECTION TO BE EDITED:
```

## Downloading a Method

See "Selecting a Method" earlier in this chapter.

## Resetting the Run Number

1. **Go to the remote keyboard.**
2. **Type SET RUNNUM and the first run number if the sequence is run number indexed.**

### Example

Prep	Edit	Store	loAd	seQ	Meth	caliB	Report	area%	Op()
F1	F2	F3	F4	F5	F6	F7	F8	F9	F10
List	Del	Zero	aTT 2`	Cht sp	ar reJ	tHrsh	pk Wd	eXt()	Intg()

```
*SET RUNNUM 1
```

```
*
```

## Checking System Readiness

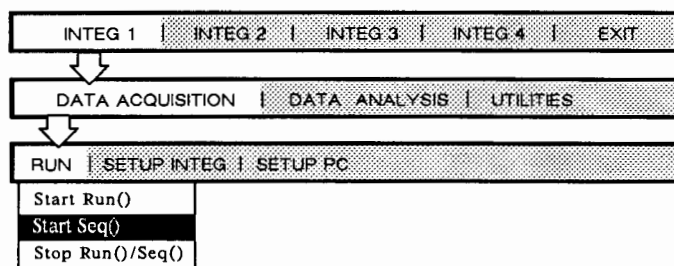
Type READY in the remote keyboard to check system readiness.



---

## Starting a Sequence from the PC

See the previous section, "Getting Ready for Your First Sequence," before actually starting a sequence from the PC.



1. **Select the appropriate integrator.**
2. **Select DATA ACQUISITION and then RUN.**
3. **Select Start Seq() to start the sequence.**

A method specified in the sequence started at the PC must reside at the integrator or on an external disk. When Start Seq() starts a chain of sequences, all the methods specified must be available at the integrator or on an external disk other than the PC.

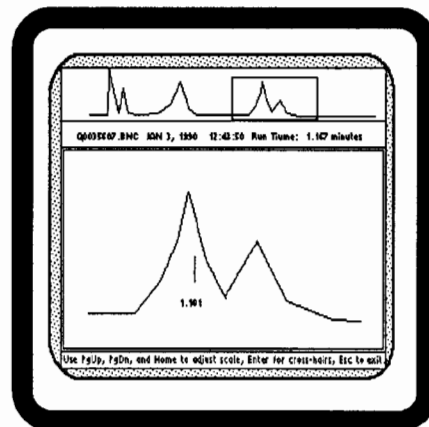
## Stopping a Sequence

A sequence can be stopped from the main screen if you want to terminate it before it is finished.

1. **Select the appropriate integrator.**
2. **Select DATA ACQUISITION and then RUN.**
3. **Select Stop Run/Seq.**

## Examining Data at the PC

---

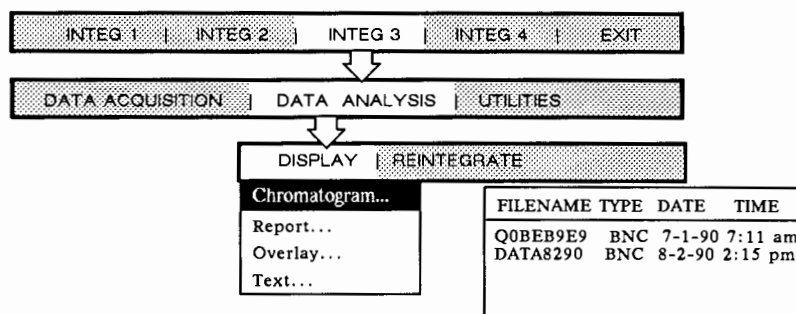


### In this chapter....

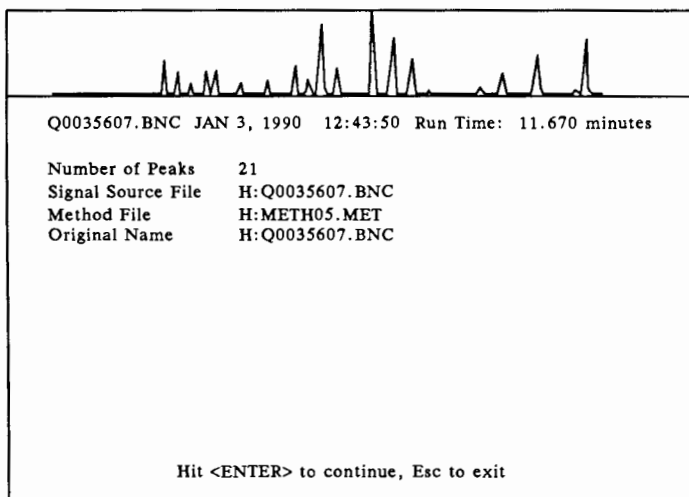
- Displaying a Chromatogram ..... 3-2
- Comparing Chromatograms ..... 3-6
- Displaying a Report or Text File ..... 3-8
- Editing a Report or Text File ..... 3-9
- Printing Reports and Text ..... 3-10
- Converting Data for Export to Other Programs ..... 3-11

# Displaying a Chromatogram

Use the mouse and the arrow keys to display previously collected data on the PC screen.

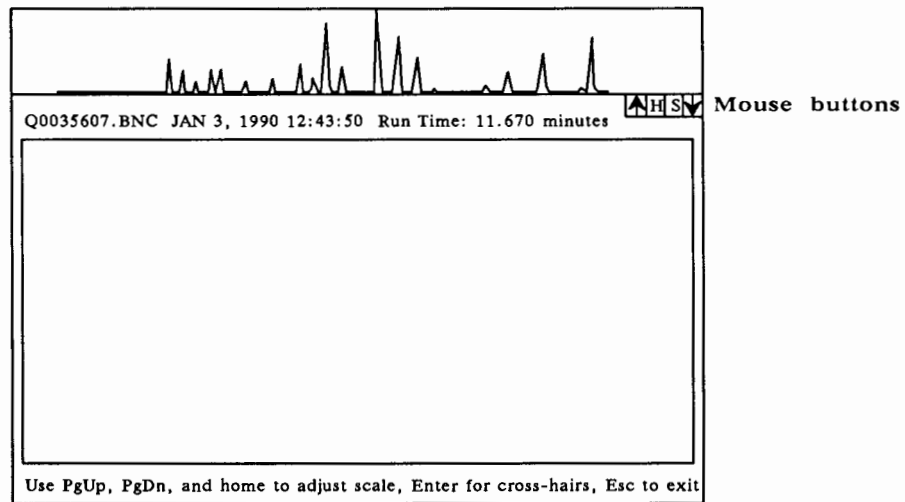


1. **Select the appropriate integrator.**
2. **Select DATA ANALYSIS and then DISPLAY.**
3. **Select Chromatogram....**  
A directory of all data files available for the selected integrator will appear.
4. **Highlight the data file you want to display and press [ENTER].**



The PC displays the chromatogram in blue. The baseline and start/stop tick marks are shown in red when a .PRO or .PRA file is available. The tops of peaks are also indicated in red. Identifying information about the data file is listed below the chromatogram.

5. Press [ENTER] to continue.



- ▲ Expands vertical scale.
- H Home returns to original, default scale.
- S Select portion to fill top display.
- ▼ Reduces vertical scale.

Use the [Pg Up] and [Pg Dn] keys (or select the up and down arrows with the mouse located just below the chromatogram on the right-hand side of the screen) to see detail on the chromatogram. The [Home] key will return the chromatogram to its original size.

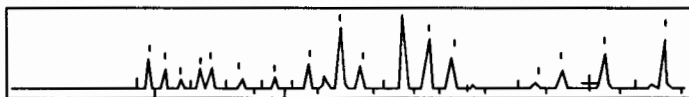
The next two pages describe how to enlarge and zoom in on the displayed chromatogram.

## Enlarging a Chromatogram

Once you have a chromatogram on the screen, you can enlarge all or any part of it using the arrow keys or the mouse.

1. Press [ENTER] to access the bottom of the screen.
2. Press [ENTER] again to get the "cross-hair." Use the mouse or arrow keys to position it at the lower left-hand corner of the portion of the chromatogram you wish to enlarge.

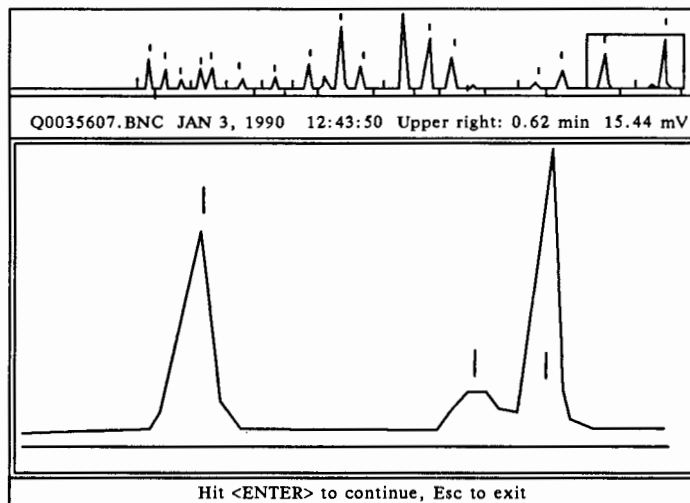
The exact position of the cross-hair is printed below the chromatogram.



Q0035607.BNC JAN 3, 1990 12:43:50 + at: 9.49 min 0.98 mV

3. Press [ENTER] again to get a box. Use the arrow keys or drag the mouse with the left-hand button held down to define the height and width of the box so that it encloses the section of the chromatogram you wish to enlarge.
4. Press [ENTER] or release the left mouse button when the box covers the area you wish to enlarge.

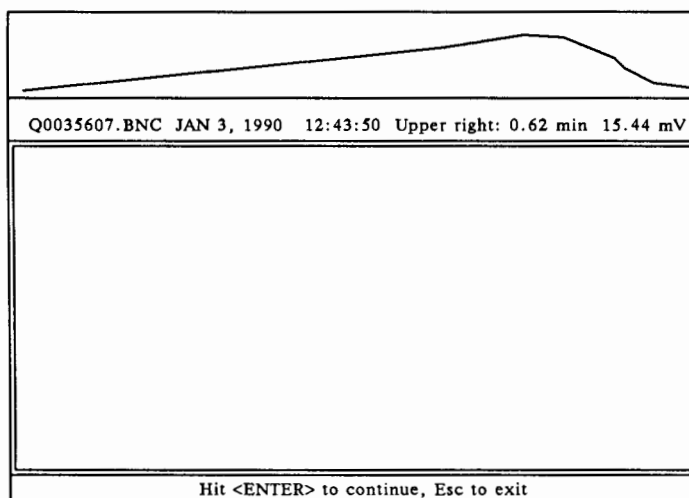
The portion of the chromatogram inside the box will be enlarged and displayed on the screen below. Peak retention times are printed near the top of the peak. The retention time in minutes and height in mV of the upper right-hand corner of the box is printed on the line between the two chromatograms along with the date, time, and file name for the data.



## Zooming In

You can zoom in on a displayed chromatogram, enlarging it as long as there are enough data points to do so. You must follow the steps 1 through 5 below when you wish to compare several chromatograms over the same time period. See "Comparing Chromatograms" on the next page.

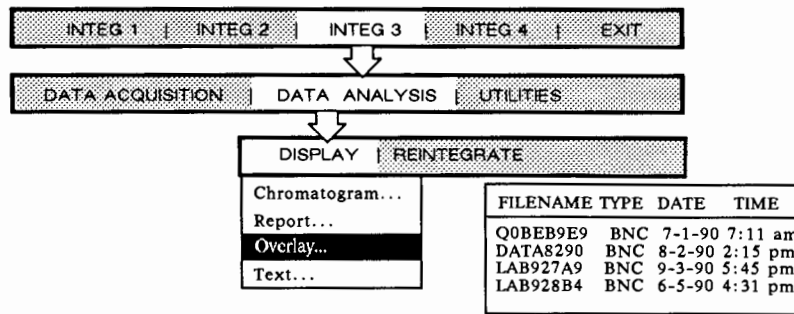
1. **Follow steps 1 through 4 for "Displaying a Chromatogram."**
2. **Follow steps 1 and 2 for "Enlarging a Chromatogram."**
3. **Press [ENTER] to get the cross-hairs. Press the [END] key on your PC.**
4. **Use the mouse or arrow keys to define the height and width of the box so that it encloses the section of the chromatogram you wish to enlarge (and compare).**
5. **Press [ENTER] again to see the enlarged portion of the chromatogram on the top of your screen.**



If you want to further enlarge this section, press [ENTER] to get the cross-hair back. Position the cross-hair and press [ENTER] again for the box. Size the box and press [ENTER] again. The enlarged image will appear again at the top of the screen. Pressing [END] again while the cross-hair is on the screen will toggle the enlarged chromatogram back to the bottom of the screen. The screen and keys will now operate as described on the preceding page.

6. **Press [HOME] to redisplay the original chromatogram.**

# Comparing Chromatograms



1. **To select a chromatogram or a portion of a chromatogram as your standard for comparison, follow steps 1 through 5 on the previous page for zooming in on a chromatogram.**

The last chromatogram that has been zoomed in on is always used as the standard for comparison.

2. **Press [Esc].**

3. **Select Overlay....**

A directory of all the data files available for the selected integrator will appear.

4. **Press [F5] to select the data files you want to overlay. Press [ENTER].**

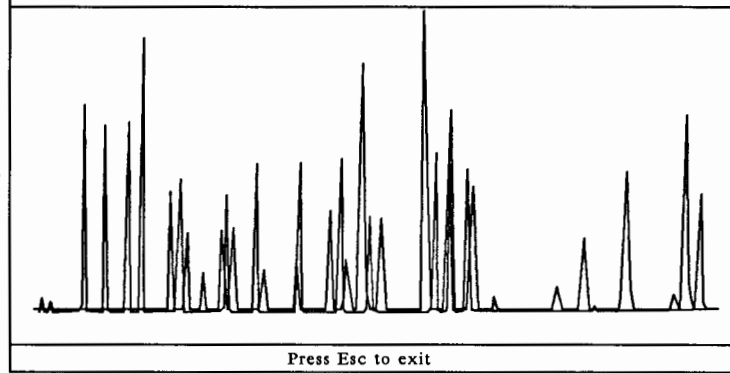
You may choose as many as four chromatograms from the directory. Mark the chromatogram you selected as your standard if you wish to display it.

If no chromatogram was displayed before attempting to overlay chromatograms, HP Peak-96 will use the file closest to the top of the alphabetical directory listing as the standard.

Data files

Fixed Scale Overlay:	start(min)	end(min)	min signal(mV)	max signal(mV)
Q0BEB9E9.BNC	0.00	11.67	-2.12	19.12
DATA8290.BNC	0.00	11.67	-2.12	19.12

Chromatograms



The chromatograms will be displayed in the order they are listed in the directory. Each chromatogram is shown in a color that corresponds to the color of the data file name listed above.

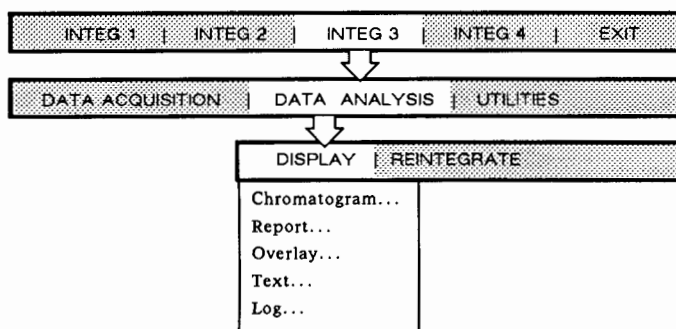
A Scale Mismatch error indicates that no peaks were found in the specified section of a data file.





---

## Displaying a Report or Text File



**1. Select the appropriate integrator.**

**2. Select DATA ANALYSIS and then DISPLAY.**

**3. Select Report... or Text....**

A directory of all the report or text files available for the selected integrator will be shown.

**4. Highlight the appropriate report or text file and press [ENTER] to display it.**

The report or text file will now appear on the screen. Use the [Pg Up] and [Pg Dn] keys to view the entire file. While text is displayed it is possible to edit it.

---

## Editing a Report or Text File

You may edit a report or text file while it is displayed.

1. **Make your changes to the text file. Pressing [F9] allows you to insert text. Pressing [F9] again returns you to overwrite mode.**

You may only change a total of 640 characters in a report or text file.

2. **Press [Esc] when you are finished editing.**

Save Changes
No
Yes

3. **Save or cancel the changes you have made.**

If you choose to save the changes you will be asked for a filename.

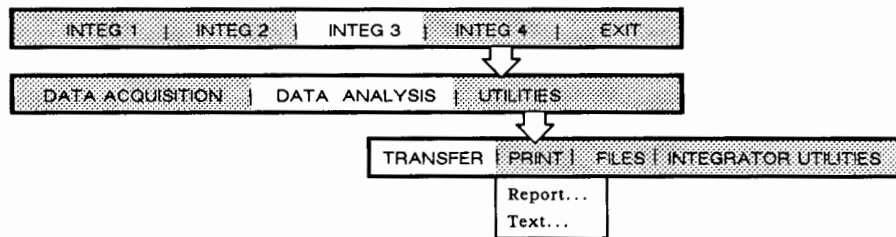
The current filename will be displayed.

Text Filename:TEST12.RPT
--------------------------

If you do not enter a new name for the file, the changes will be made to the original file. Entering a new name for the file (up to eight characters beginning with a letter and a three-character file extension) allows you to keep both versions of the report or text file.

---

## Printing Reports and Text



1. **Select the appropriate integrator.**

2. **Select UTILITIES and then PRINT.**

3. **Select Report... or Text....**

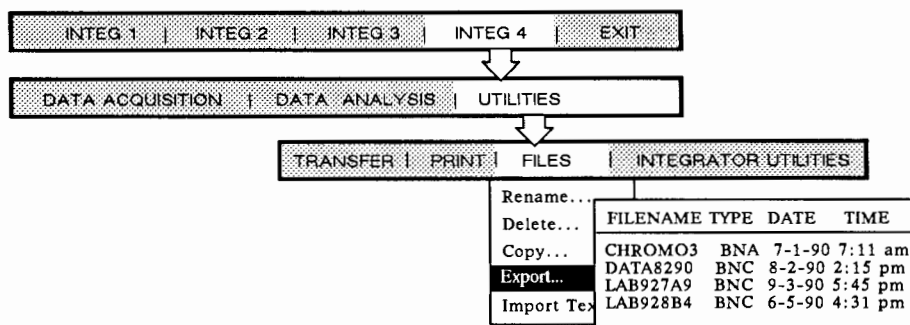
A directory of all the report or text files available for the selected integrator will be displayed.

4. **Highlight the appropriate report or text file and press [ENTER] to print it.**

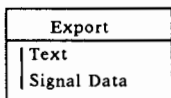
The selected integrator will now print the report or text file you have chosen. You can stop printing at any time by pressing [Alt] [Q].

# Converting Data for Export to Other Programs

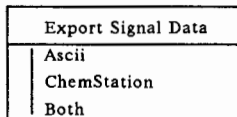
Data from analyses can be converted to ASCII and exported to other software packages such as Lotus 1-2-3®, MS Excel®, etc for further examination. In addition, data can be converted to HP 3365 ChemStation format for further analysis.



1. **Select the appropriate integrator.**
2. **Select UTILITIES and then FILES.**
3. **Select Export....**



4. **Select Signal Data.**



5. **Select the type of data format to which you want to convert.**

A directory of all the data files available for the selected integrator will appear.

6. **Select the data file you want to convert.**

## 7. Select a destination directory and file for the converted format.

Destination File or Dir

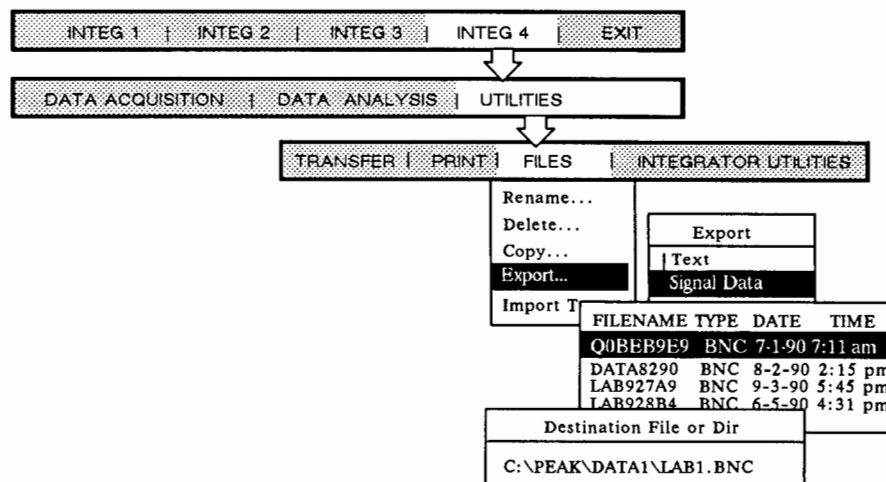
If you selected Both above, two files will be created with the same name but with different file extensions. The file extension .ASC indicates an ASCII file. HP ChemStation files have a .D extension.

While conversion of data and creation of the new file is in progress, you can continue other operations at the PC.

To check that the new file exists, get a listing of the files in the current directory by pressing Copy... Select the <PARENT> directory until you find the directory you sent the file to. Then select the directory and search for the file. Use the [Esc] key to keep from making an unwanted copy of the file.

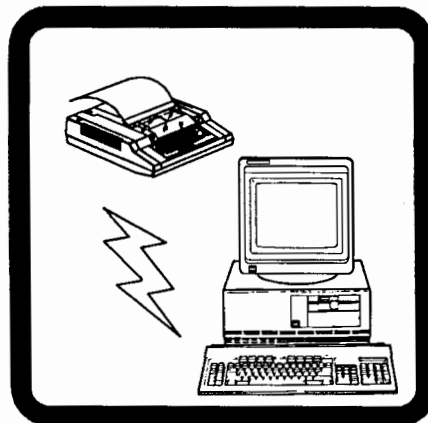
See chapter 5 for more information about using the file system.

### Example



# Operating the Integrator from the PC

---



**In this chapter....**

Integrator tasks and commands are arranged alphabetically.



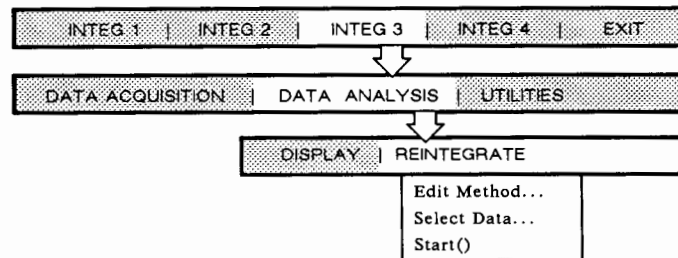
You can use the PC to do most tasks that you do directly at the integrator. Some integrator functions are accessible from the main menus. Other integrator functions may be performed only from the remote keyboard.

Use the remote keyboard to access all dialogs on the integrator. In addition, methods may be edited by menus under SETUP INTEG.

**Note:** Certain restrictions apply to the usage of the PC to control the integrator. For example, runs or sequences may not be started from the remote keyboard and the PC cannot be used as an external BASIC terminal.

## ANALYZE

Use the main menu to reintegrate data.



**Note:** The ANALYZE command is not available from the remote keyboard.

### Example

1. **Select the appropriate integrator.**
2. **Select DATA ANALYSIS and then REINTEGRATE.**
3. **Select Edit Method... to edit and/or download the appropriate method to the integrator.**
4. **Select Select Data... to select a data file.**
5. **Select Start to begin the reintegration.**

## application programs

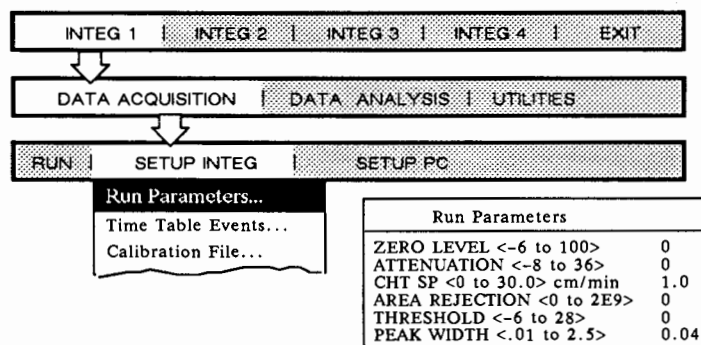
Application or BASIC programs assigned to the numeric keys on the integrator are not necessarily accessible from HP Peak-96. When you press a numeric key from the remote keyboard to initiate an HP 3396 Series II application program, the program banner will indicate if the program is not accessible from HP Peak-96. Press [ENTER] twice to exit these programs from HP Peak-96.

## AREA %

Press [SHIFT] [F9] to access the [AREA %] key from the remote keyboard.

## area rejection

Change the area rejection amount from the SETUP INTEG menu by selecting Run Parameters....



You can time program area rejection using the Time Table Events... menu. See Integration functions in this chapter for a diagram. You can also access the [AR REJ] key from the remote keyboard by pressing [F6].

## ASSIGN

Type ASSIGN at the asterisk from the remote keyboard.

## attenuation

Change the attenuation from the SETUP INTEG menu by selecting Run Parameters...; see the diagram above. You can time program attenuation using the Time Table Events... menu. See Integration functions in this chapter for a diagram.

You can also access the [ATT 2 ^] key from the remote keyboard.



## **BASIC programs**

Use the remote keyboard to write BASIC programs. Type BA at the \* prompt to get into the BASIC mode. Press **[ENTER]** twice to exit from BASIC. Exit from BASIC before pressing **[Esc]** to exit from the remote keyboard. External BASIC (BX mode) is not available from HP Peak-96. See your integrator's BASIC manuals for more information about how to use BASIC.

## **calibrations**

Use the remote keyboard to access the EDIT, DELETE, and PREP CALIB dialogs.

## **chart speed**

Change the chart speed from the SETUP INTEG menu by selecting Run Parameters...; see the diagram on the previous page. You can time program chart speed using the Time Table Events... menu. See integration functions in this chapter for a diagram.

You can also access the **[CHT SP]** key from the remote keyboard by pressing **[F5]**.

## **COPY**

Type COPY at the asterisk from the remote keyboard. You cannot specify H: to copy files from the integrator. You can use the file manager program at the HP 3396 Series II Integrator to send files from the integrator to the PC.

## **CREATE**

Type CREATE at the asterisk from the remote keyboard.

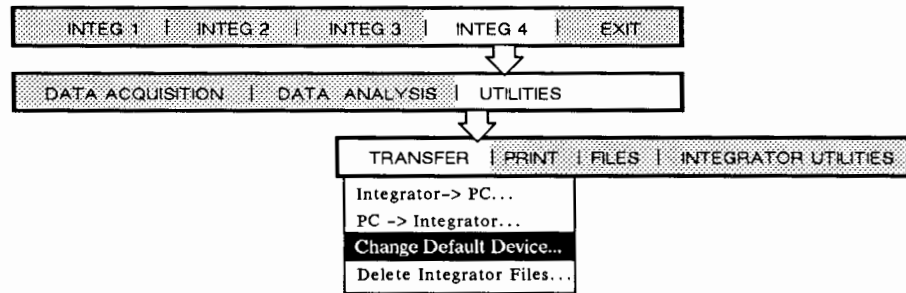
## **[CTRL] [BREAK]**

Do not use the **[CTRL] [BREAK]** keys on the integrator while it is connected to HP Peak-96 unless you are troubleshooting the system. See chapter 6.

## **DATE**

Type DATE at the asterisk from the remote keyboard.

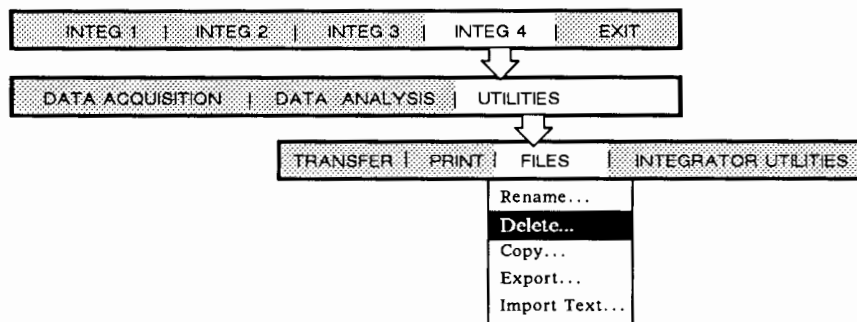
## default disk



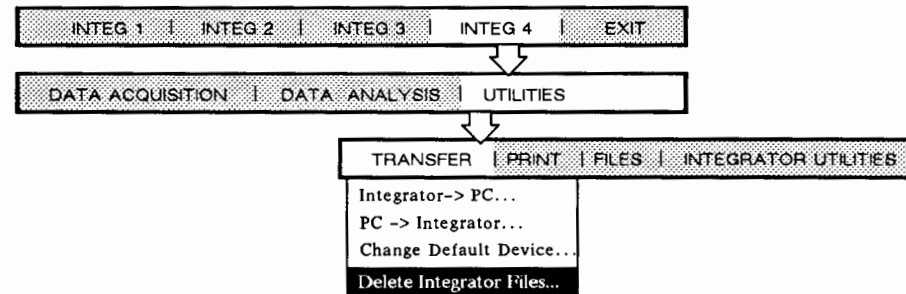
Enter the letter of the device you wish to make the default device. The PC host (H:) cannot be defined as the default device from HP Peak-96.

## deleting...

Any file stored at the PC may be deleted.



Any file stored at the integrator may be deleted from the PC.



## DIRECTORY

Directory for....	How to get it
All files	Select UTILITIES, FILES, and Copy...
Calibrations	Select DATA ACQUISITION, SETUP INTEG, and Calibration File...
Methods	Select DATA ACQUISITION, SETUP INTEG, and Select Old Method...
Reports	Select DATA ANALYSIS, DISPLAY, and Report...
Sequences	Select UTILITIES, FILES, and Copy...
Text	Select UTILITIES, FILES, and Export Text...

You can also access the DIRECTORY command from the remote keyboard.

**Note:** DIRECTOR H: cannot be accessed.

## Editing...

Editing....	How to do it
Calibrations	Use remote keyboard.
Methods	Use SETUP INTEG menu from DATA ACQUISITION.
Reports	Use DISPLAY Report... from DATA ANALYSIS.
Sequences	Use remote keyboard.
Text	Use DISPLAY Text... from DATA ANALYSIS.

## external events

Access external events from the remote keyboard for the appropriate integrator.

## FORMAT

You may format disks from the remote keyboard for the appropriate integrator.

## HELP

Press [F1] from the main menu. See chapter 1 for more information.

## IDENTIFIER

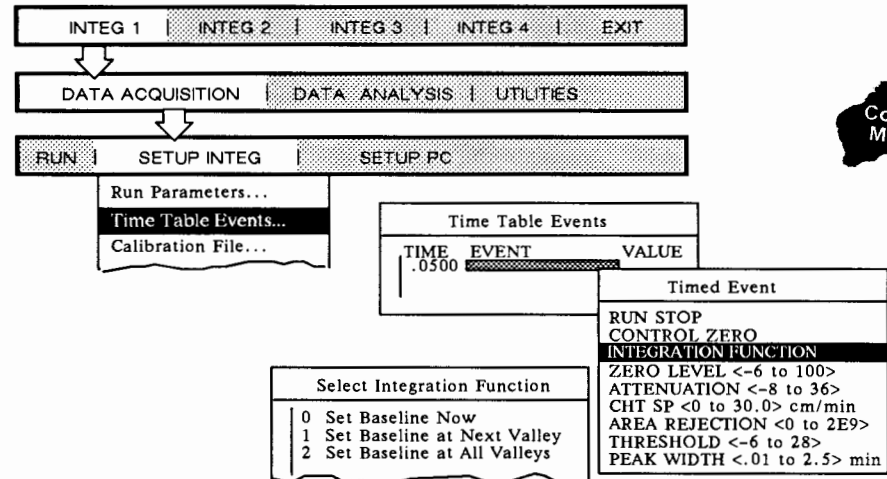
Type ID at the asterisk from the remote keyboard.

## INET\_CONFIGURATION

Type INET\_CONFIG at the asterisk from the remote keyboard.

## integration functions

Integration functions cannot be accessed from the PC during a run. Use the Time Table Events... menu to time program integration functions into a run.



Press **[ENTER]** while **EVENT** is highlighted in the Time Table Events menu. Selecting **INTEGRATION FUNCTION** from the Timed Event menu will allow you to choose from the list of 14 integration functions.

## listing...

Listing....	How to do it
Calibrations	Use remote keyboard.
Methods	Use remote keyboard.
Reports	Use DISPLAY Report... from DATA ANALYSIS.
Sequences	Use remote keyboard.
Text	Use DISPLAY Text... from DATA ANALYSIS.

## LOAD

Use the main menu screen to load methods and calibrations stored on the PC.

Run Parameters...  
Time Table Events...  
**Calibration File...**  
Integration Plot Type...  
Data Storage Options...  
Report Options...  
Post-run List Options...  
Save Current Method...  
Select Old Method...  
Download Method...

FILENAME	TYPE	DATE	TIME
CAL_2	CAL	7-1-90	7:11 am
CAL625	CAL	8-2-90	2:15 pm
STDCAL	CAL	9-3-90	5:45 pm

After selecting a calibration, select Download Method... to load the desired method and calibration into the active workspace of the integrator.

Run Parameters...  
Time Table Events...  
Calibration File...  
Integration Plot Type...  
Data Storage Options...  
Report Options...  
Post-run List Options...  
Save Current Method...  
Select Old Method...  
**Download Method...**

FILENAME	TYPE	DATE	TIME
METH_2	MET	7-1-90	7:11 am
METH625	MET	8-2-90	2:15 pm
STDMETH	MET	9-3-90	5:45 pm

Use Transfer PC -> Integrator... to load files from the PC to the integrator.

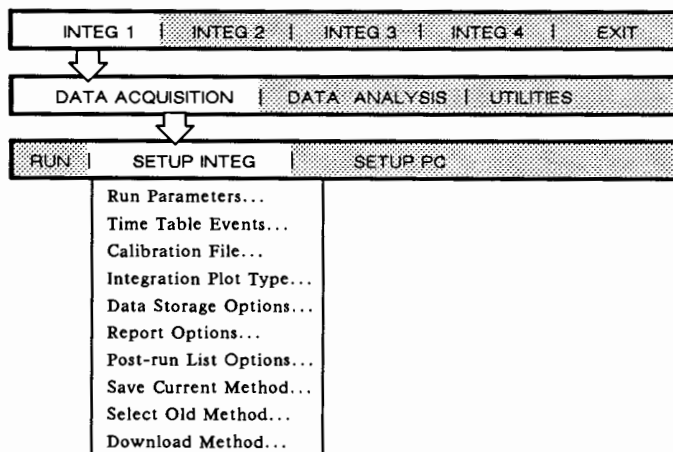
Use the remote keyboard to LOAD a sequence from an external disk (not H:) to the integrator.

## LOCK

The LOCK command is not available at the PC.

## methods

Methods can be edited and created from the main menu.



You must press the backspace key or type new values to correct mistakes when editing method parameters. The [Esc] key accepts the current values and/or exits from the parameter field.

When editing or creating a new method from this menu, you must select Save Current Method... and give the new method a name. Once you have saved your current method, you can select it using Select Old Method... and send it to the integrator via Download Method... for use in the next run.

You may also use the remote keyboard to access the EDIT, DELETE, and PREP METH dialogs. Method files can be renamed, copied, and deleted through the FILES menu.

Run parameters may not be accessed during a run from the PC.

## NOTEPAD

The NOTEPAD command is not available at the PC.

## option dialogs

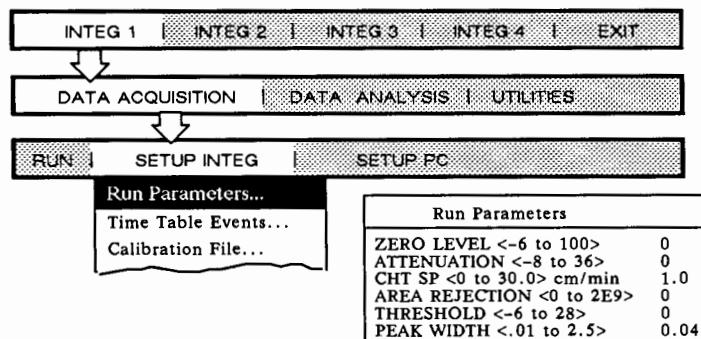
All option dialogs are accessible from the remote keyboard. Options 1, 2, 4, and 5 are available from the SETUP INTEG menu under Integration Plot Type, Data Storage Options, and Report Options. Print & Post-run List Options... are available with the HP 3396 Series II.

## PACK

The PACK command is available from the remote keyboard. If the pack operation is lengthy, the remote keyboard session will close allowing you to access other parts of the program. The pack operation will continue at the integrator.

## peak width

You can change the peak width from the SETUP INTEG menu by selecting Run Parameters....



## plot

Access the [PLOT] key from the remote keyboard using the [ key. Stop plotting with the | key.

## preparing...

Methods are prepared from the main menu. Calibrations and sequences are prepared from the remote keyboard.

## programming

See time programming or BASIC programs.

## PURGE

The PURGE command is available from the remote keyboard.

## READY

The READY command is available from the remote keyboard. You can also check instrument status by selecting UTILITIES, INTEGRATOR UTILITIES, and Status().

## RECONFIGURE

The RECONFIGURE command is available from the remote keyboard.

Pressing [Alt] and [F4] simultaneously reconfigures the currently selected integrator.

## reintegration

See ANALYZE.

## RENAME

The RENAME command is available from the remote keyboard.

## reports

You may display, edit, and print reports stored on the PC. See chapter 3 for details.

## sequences

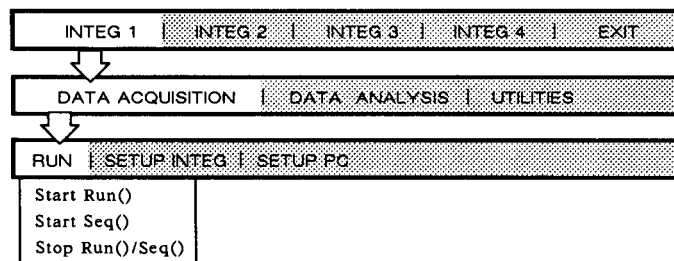
Use the remote keyboard to access EDIT, DELETE, and PREP SEQ dialogs.

## SET

The SET command is available from the remote keyboard. Use SET to reset the run number from the PC.

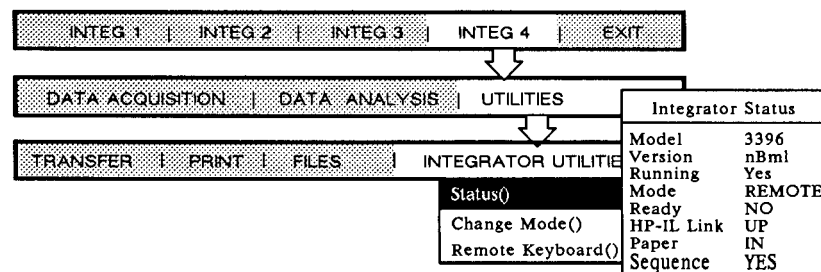
## start run/sequence

Runs and sequences are started from the main menu. Before starting a run or sequence be sure that the appropriate method(s) have been downloaded to the integrator. Starting a run or sequence is not available from the remote keyboard.



## status

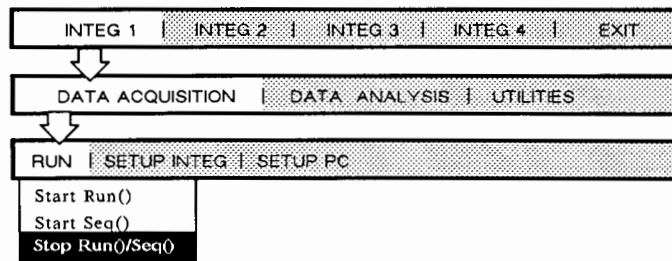
You can check the current status of an integrator during a run.





## stop run/sequence

Runs and sequences are stopped from the main menu. Methods that contain a timetable stop will end a run or sequence automatically.



## STORE

Files are stored according to their type.

Storing....	How to do it
Calibrations	Use remote keyboard.
Methods	Select Save Current Method... from SETUP INTEG.
Reports	Use DISPLAY Report... from DATA ANALYSIS.
Sequences	Use remote keyboard.
Text	Use DISPLAY Text... from DATA ANALYSIS.

## SYSTEM

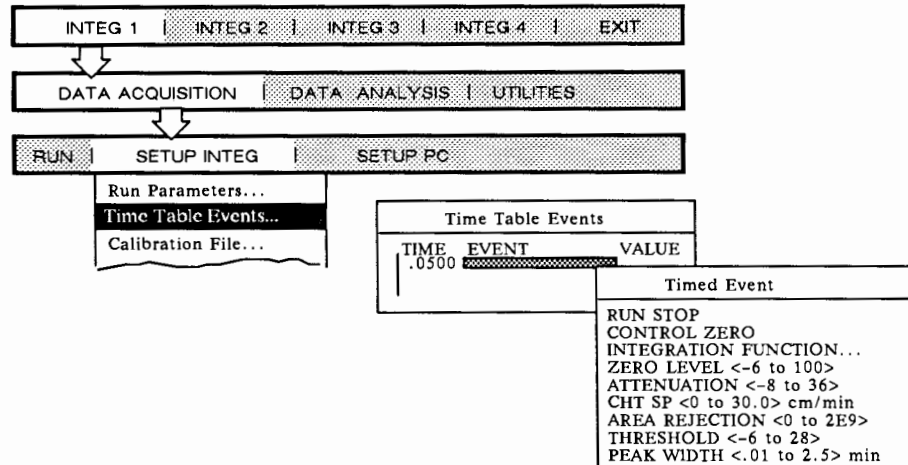
The SYSTEM command is available from the remote keyboard.

## TIME

Access the [TIME] key from the remote keyboard using the ] key. The TIME command is also available from the remote keyboard.

## time programming

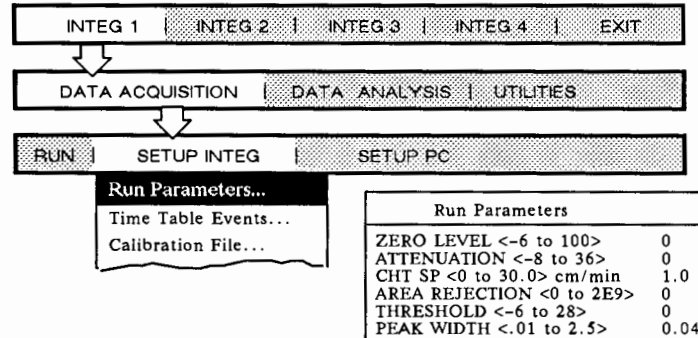
Use the Time Table Events in the SETUP INTEG from the main menu.



Enter a time in the Time Table Events menu and press [ENTER]. Press [ENTER] while EVENT is highlighted. Select an event from the Timed Event menu. Enter an appropriate value. (A value of zero will be entered as a place holder for stop time and control zero.) Use the [Del] key to delete entries. See integration functions for related information.

## threshold

You can change the threshold from the SETUP INTEG menu by selecting Run Parameters.... Threshold cannot be changed during a run from the PC.



**UNLOCK**

The UNLOCK command is not available at the PC.

**XADDRESS**

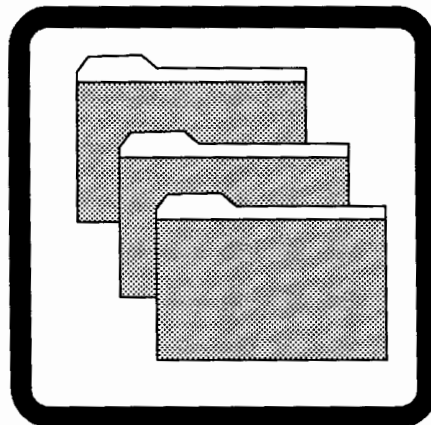
The XADDRESS command is available from the remote keyboard.

**zero**

You can change the zero from the SETUP INTEG menu by selecting Run Parameters...; see the diagram above. Zero cannot be changed during a run from the PC.

# Managing Files at the PC

---

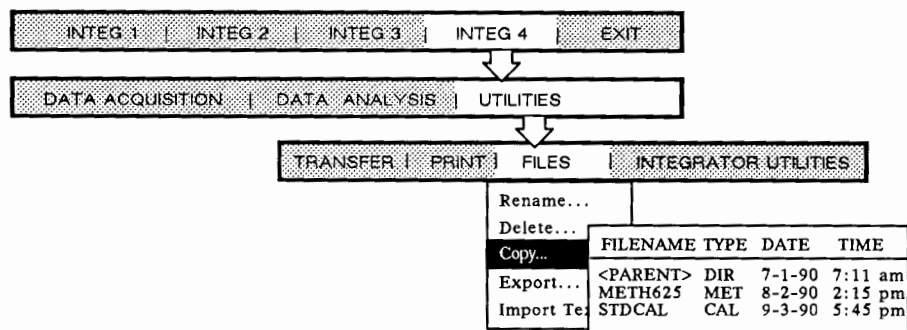


## In this chapter....

- Copying Files ..... 5-2
- Deleting Files ..... 5-4
- Renaming Files ..... 5-6
- Transferring Files from the PC to the Integrator ..... 5-7
- Managing Text Files ..... 5-8

# Copying Files

Any file may be copied from HP Peak-96. The <PARENT> directory entry allows you to move around in all the directories to find the file you want to copy.



1. **Select the appropriate integrator.**
2. **Select UTILITIES and then FILES.**
3. **Select Copy....**

A directory of all files available in the current directory will be displayed in alphabetical order. The <PARENT> directory at the top of the list allows you to access files in other directories.

4. **Select the file(s) you wish to copy. Press [ENTER].**

Use [F5] to mark more than one file. Press the [Insert] key on the PC to get the Copy Wildcard box. This box allows you to use asterisks to copy groups of files. As many as 50 files may be copied at one time.

Destination File or Directory

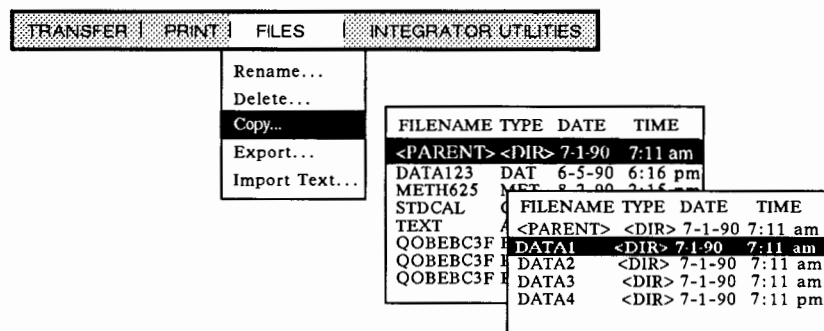
5. **Type a new filename or the name of the directory in which you want the file(s) to appear.**

When a new file name is specified, the copied file will appear in the same directory with the original file. When a new (already existing) directory is specified, the copied file(s) will appear under the same name(s) in the specified directory. Make sure that the data prefix is set to DEFLT when copying files. See Appendix B for more information about the data prefix.

## Example

You want to copy all the data files in the DATA1 directory to a new directory.

1. Follow steps 1 through 3 above.



2. Select the <PARENT> directory to move up one level of directories.
3. Select the DATA1 directory and press [Ins] to get the copy wildcard box.
4. Use the asterisk to copy more than one file at a time.

Copy Wildcard
*.BNC

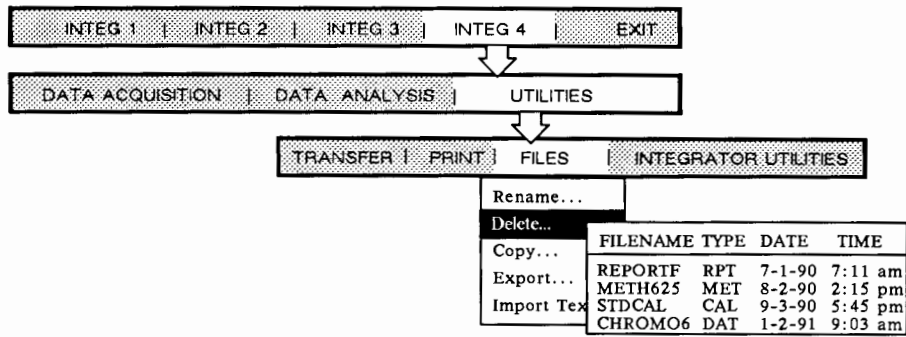
In this example all the .BNC files will be copied.

5. Type a destination directory name for the copies.

Destination Directory
C:\PEAK96\ARCHIVE1

PEAK96 and ARCHIVE1 are already existing directories on the system. Create new directories in DOS before attempting to copy files to them.

# Deleting Files



1. **Select the appropriate integrator.**

2. **Select UTILITIES and then FILES.**

3. **Select Delete....**

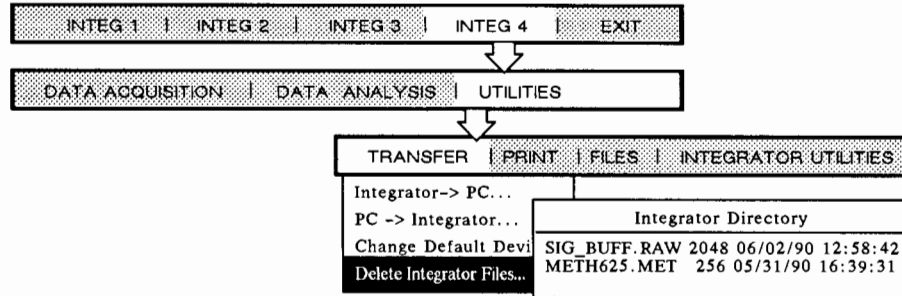
A listing of all files available in the current directory will be displayed in alphabetical order.

4. **Select the file(s) you wish to delete. Press [ENTER].**

Use [F5] to mark more than one file. Press the [Insert] key on the PC to get the Delete Wildcard box. This box allows you to use asterisks to delete groups of files. As many as 50 files may be deleted at one time.

Delete Wildcard

## Deleting Integrator Files



1. **Select the appropriate integrator.**
2. **Select UTILITIES and then TRANSFER.**
3. **Select Delete Integrator Files....**

A listing of all files available in the integrator directory will be displayed in chronological order.

4. **Select the file(s) you wish to delete. Press [ENTER].**

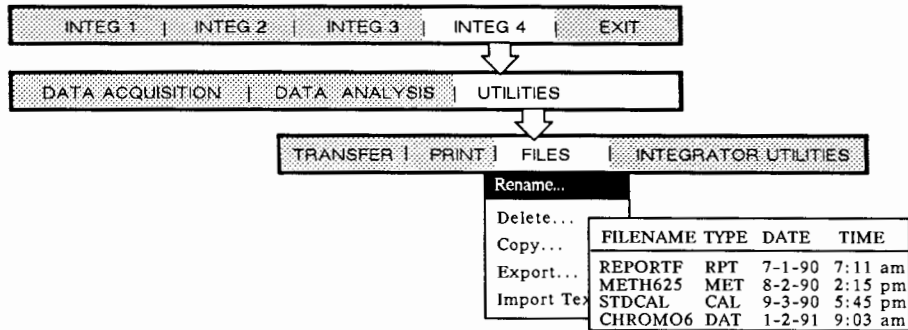
Use [F5] to mark more than one file. Press the [Insert] key on the PC to get the Delete Wildcard box. This box allows you to use asterisks to delete groups of files. As many as 50 files may be deleted at one time.

Delete Wildcard



# Renaming Files

You can rename any file in the current directory from HP Peak-96.



1. **Select the appropriate integrator.**
2. **Select UTILITIES and then FILES.**
3. **Select Rename....**

A directory of all files available in the current directory will be displayed in alphabetical order.

4. **Select the file you wish to rename.**

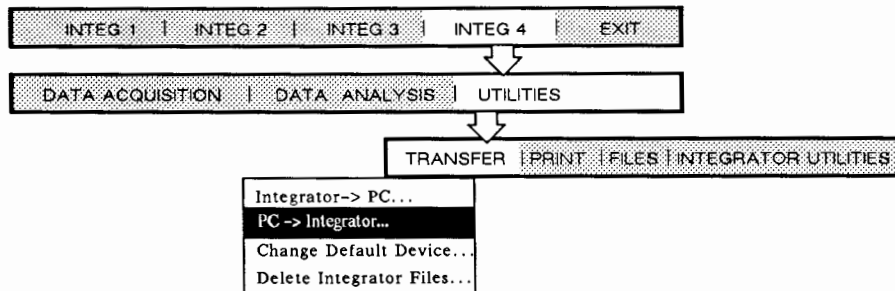
New Filename

5. **Type in a new name for the file. You may use eight or less characters for the name and a three-character file extension.**

Be sure to specify a correct file extension so that you can recognize the file type in the future. Be sure that data file names begin with a letter to allow them to be reintegrated. The renamed file will appear in its new alphabetical place in the file directory.

# Transferring Files from the PC to the Integrator

See chapter 1 for how to transfer files to the PC from the integrator. Files may be transferred back to the integrator in a similar way.



1. **Select the integrator you wish to transfer files to.**
2. **Select UTILITIES.**
3. **Select TRANSFER.**
4. **Select PC -> Integrator....**
5. **Use the arrow keys to select the file you wish to transfer. Press [ENTER].**

The file you choose will now appear in the integrator directory. To check this, select Integrator -> PC.... The directory for the integrator will appear on the screen and you can page down to find the file you just transferred. The current data path is printed at the bottom of the screen.

The data prefix does not alter file names when files are transferred from the PC to the integrator.

Press **[Alt] [Q]** to stop a file transfer from the PC to the integrator before it is complete.

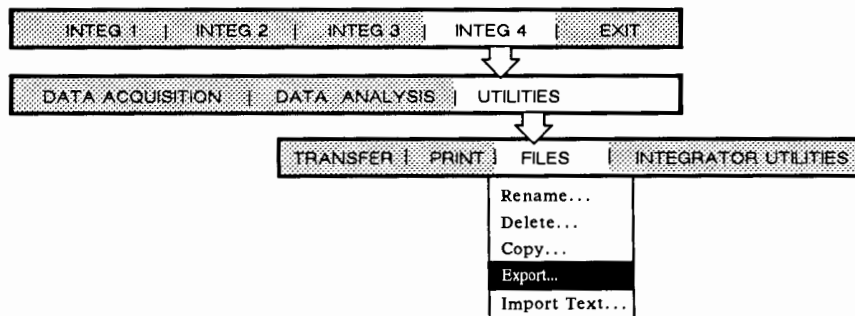
**Note:** Text files not created in HP Peak-96 or at an associated integrator require conversion before being transferred from the PC to the integrator. See the next page for information about transferring text files.

# Managing Text Files

You can use HP Peak-96 to edit, store, print, and transfer text files between the integrator and the PC.

## Exporting Text Files from HP Peak-96

Text files must be converted to standard ASCII format to move from HP Peak 96 to another program.



1. **Select the appropriate integrator.**
2. **Select UTILITIES and then FILES.**
3. **Select Export....**

Export
<b>Text</b>
Signal Data

FILENAME	TYPE	DATE	TIME
<PARENT>	<DIR>	7-1-90	7:11 am
DATA123	RPT	6-5-90	6:16 pm
EXAMPLE	TXT	8-2-90	2:15 pm
QOBEC3F	RPT	5-9-90	4:15 pm

4. **Select Text.**
5. **Select one or more files to export. Press [ENTER].**

Use [F5] to mark more than one file. Press the [Insert] key on the PC to get the Export Wildcard box. This box allows you to use asterisks to export groups of files. As many as 50 files may be exported at one time.

Destination File or Directory
C:\PEAK

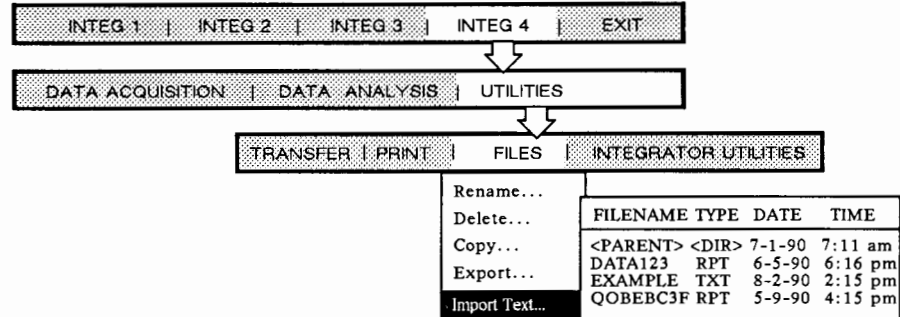
6. **Select a destination directory and file name for the converted files.**

See the section in chapter 3 entitled "Converting Data for Export to Other Programs" for exporting data files.

# Importing Text Files to HP Peak-96

Importing text files means moving them from other programs to Peak-96 so that you can display or edit them or print them on the integrator.

**Note:** The HP 3393A cannot print text files with lines longer than 40 characters.



1. **Select the appropriate integrator.**
2. **Select UTILITIES and then FILES.**
3. **Select Import Text....**

FILENAME	TYPE	DATE	TIME
<PARENT>	<DIR>	7-01-90	7:11 am
EMPTY	TXT	5-16-90	1:45 pm
EXAMPLE	TXT	8-2-90	2:15 pm
QOBEC3F	RPT	5-9-90	4:15 pm

4. **Select one or more files to import. Press [ENTER].**

The < PARENT > directories allow you to change levels and pick from any directory on your PC.

Use [F5] to mark more than one file. Press the [Insert] key on the PC to get the Import Wildcard box. This box allows you to use asterisks to import groups of files. As many as 50 files may be imported at one time.

See chapter 3 for information about displaying, editing, and printing text and report files.



## In Case of Difficulty

---



### In this chapter....

- How to Get Help ..... 6-2
- Problem Symptoms ..... 6-3
  - PC Locks Up ..... 6-3
  - Integrator Doesn't Respond to PC ..... 6-4
  - Display Chromatogram Function Doesn't Work Properly . 6-5
  - Communication Difficulties between PC and Integrator .. 6-6
  - Data Files Not Renamed ..... 6-7
  - All Files Renamed (Not Just Data Files) ..... 6-7
  - Cannot Access Integrator Directory ..... 6-8
  - How to Access the Log File ..... 6-9

---

## How to Get Help

1. **Find your problem description in this chapter.**
2. **Follow the suggested actions in the order they are presented. Make a note of any pertinent error messages or log file transactions.**
3. **If you are unable to resolve the problem, call HP Service.**  
In the USA send in your software registration card to receive your toll-free phone number for the Analytical Response Center.

---

# Problem Symptoms

## PC Locks Up

Possible Causes:

- Defective file
- Software defect

Suggested Actions:

1. **Record any messages displayed on the PC screen.**
2. **Reset the PC by pressing [Ctrl] [Alt] and [Del] simultaneously.**
3. **If the PC is not reset by step 2, then turn power to the PC off and on again. Restart HP Peak-96 by typing PEAK96 at the appropriate directory prompt.**

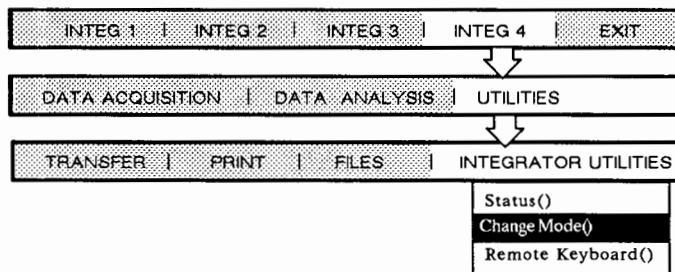


## Integrator Doesn't Respond to PC

### Possible Causes:

- Integrator in remote mode
- Communications between integrator and PC in an undetermined state

### Suggested Actions:



1. **Go to Change Mode() and select to change integrator back to local mode.**
2. **Press [Alt] [F4] to reset integrator.**
3. **If step 2 does not reset the integrator, press [CTRL] [BREAK] on the integrator that does not respond to the PC.**

You may have to exit and restart HP Peak-96 by typing PEAK96 at the appropriate directory prompt.

4. **Turn integrator power off and then on again.**

You may have to exit and restart HP Peak-96 by typing PEAK96 at the appropriate directory prompt.

## Display Chromatogram Function Doesn't Work Properly

### Possible Causes:

- No processed peak file
- Improperly installed hardware
- Defective file

### Suggested Actions:

**1. If you don't have a processed peak file, edit the method to store processed peaks, and reintegrate the file. Then display the chromatogram.**

**2. Check hardware installation. See Appendix A for installation instructions.**

For large files, you may need a numeric coprocessor to display chromatograms in a reasonable amount of time.

**3. Check the current log file. See instructions at the end of this chapter.**

The log file may give you more information about the problem.

## Communication Difficulties between PC and Integrator

### Possible Causes:

- Integrator left in undetermined state
- Improperly installed hardware
- Defective file

### Suggested Actions:

- 1. Press [Alt] [F4] to reset integrator.**
- 2. Check hardware installation. See Appendix A for installation instructions.**  
Ensure that IRQ4 is uniquely assigned to COM1, and IRQ3 is uniquely assigned to COM2.
- 3. Check installation of bus mouse.**  
Interrupt-control conflicts typically occur on systems that have more than two serial ports, a serial mouse, or modem option. Ensure that interrupts do not conflict.
- 4. Check current log file. See instructions at the end of this chapter.**  
The log file may give you more information about the problem.

## Data Files Not Renamed

Possible Causes:

- Data prefix reset to DEFLT

Suggested Actions:

1. **Reset data prefix at SETUP PC. See Appendix B for instructions.**

PC will go back to DEFLT setting when integrators are added to the system.

## All Files Renamed (Not Just Data Files)

Possible Causes:

- Data prefix not reset to DEFLT

Suggested Actions:

1. **Reset data prefix to DEFLT at SETUP PC. See Appendix B for instructions.**

The data prefix is used for all files transmitted to HP Peak-96 from the integrator, not just data files. Data prefix must be set to DEFLT to retain original names when transferring files from the integrator to the PC.

## Cannot Access Integrator Directory

### Possible Causes:

- Default device not set properly

### Suggested Actions:

- 1. Reset default disk. See chapter 4 for instructions.**

There is no way to list the current default device at the PC. You must enter the letter of the appropriate device to be sure that it is set properly.

## How to Access the Log File

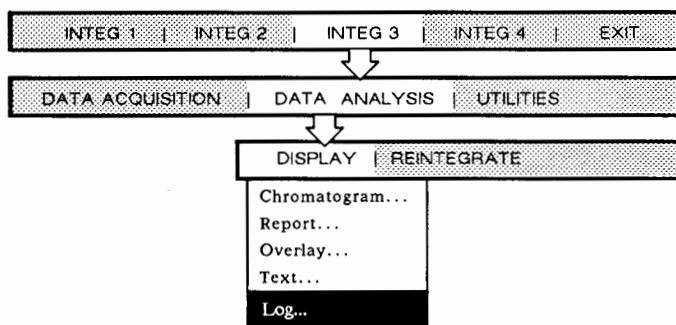
The log file keeps track of all the transactions between the PC and the integrator and whether they were successful. It may be useful in understanding unexpected activity. To access the file of transactions since you last looked:

- 1. Press [Alt] [F6] while the main menu is displayed.**

You cannot access the log file while displaying a chromatogram or from the remote keyboard. A list of all the transactions that have taken place since the last time you checked the log file will be displayed.

- 2. Press [Esc] to return to the main menu.**

After you display the current log file, it will no longer be the current file but will be stored and named with today's date. You may view these old log files from the main menu.



- 1. Select appropriate integrator.**

- 2. Select DATA ANALYSIS and then DISPLAY.**

- 3. Select Log...**

A directory of all the log files for the selected integrator will be displayed.

- 4. Highlight the appropriate log file and press [ENTER] to display it.**

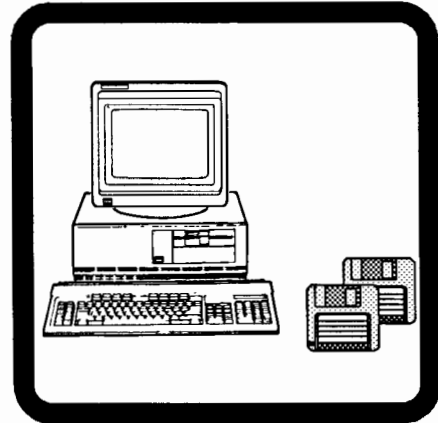
The log file will now appear on the screen. Use the [Pg Up] and [Pg Dn] keys to view the entire file. Log files accumulate and are available for display.



# Appendix A

## Installing HP Peak-96

---



### In this chapter....

- How to Use These Instructions ..... A-2
- Pre-Installation Checklist ..... A-3
- Installing Your HP Vectra with One Integrator ..... A-4
- Installing Your IBM-AT PC with One Integrator ..... A-6
- Installing Your HP Vectra with Multiple Integrators .... A-8
- Installing Your IBM-AT PC with Multiple Integrators ... A-10
- Post-Installation Checklist ..... A-13
- Cables ..... A-14
- Installing the Software ..... A-15
- In Case of Difficulty ..... A-18



---

## How to Use These Instructions

Instructions for installing HP Peak-96 are included in chronological order, but some sections may be skipped depending on your configuration.

1. Use the pre-installation checklist on the next page to determine that you are ready to install HP Peak-96.
2. Install the hardware using the the section that matches your particular configuration.
  - If you have an HP Vectra and one integrator, see page A-4.
  - If you have an HP Vectra and more than one integrator, see page A-8.
  - If you have an IBM-AT or other compatible PC and one integrator, see page A-6.
  - If you have an IBM PC or other compatible PC and more than one integrator, see page A-10.
3. Use the post-installation checklist on page A-13 to check your installation of the hardware.
4. Install the software using the instructions on page A-15.

---

## Pre-Installation Checklist

- Do you have an EGA or VGA color/monochrome monitor?
- Do you have a version of MS-DOS® between 3.0 and 3.3 inclusive?
- Do you have a 20-Mbyte hard disk drive?
- Do you have at least 640 Kbytes of conventional RAM?
- If you are installing more than one integrator, do you have a serial port and RS-232-C cables for each one?
- Do you have a numeric coprocessor?  
(Recommended but not required.)

### Tools you will need...

- 1/8-inch flathead screwdriver
- Any tools necessary to install your PC

---

# Installing the HP Vectra with One Integrator

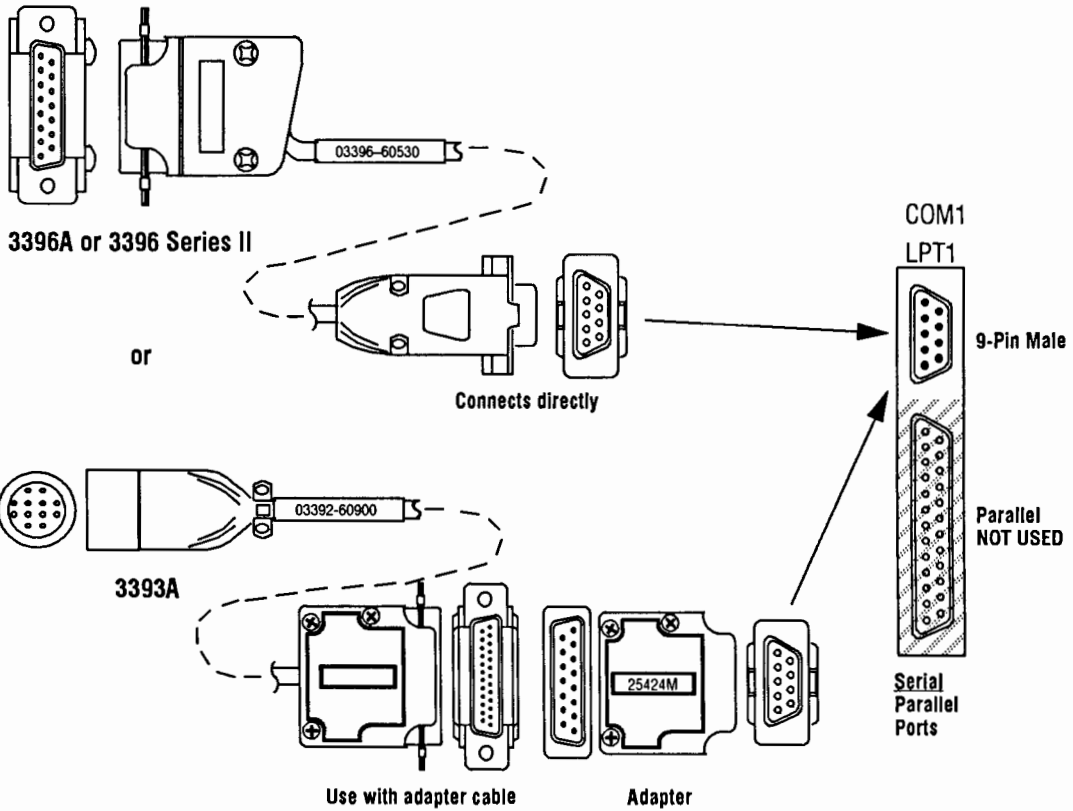
## Hardware Required

- RS-232-C cable and extension cable if integrator will be located more than 25 feet from the PC
- HP Vectra (CS not recommended)
- HP 3393A, HP 3396A, or HP 3396 Series II Integrator with baud rate set to 9600 (factory default)
- PC Keyboard overlay (located in the inside front pocket of this manual)
- Compatible Microsoft® or Logitech™ mouse (optional)

## Installing the Hardware

1. **Arrange the hardware.**  
Standard cable length is 25 feet.
2. **Install the PC and mouse (optional).**  
See relevant HP Vectra and mouse manuals.
3. **Install the integrator.**  
Follow installation instructions in the appropriate manual.
4. **Connect the RS-232-C cable between the Vectra serial port and the integrator's *computer* (RS-232-C) port.**  
The 03396-60530 cable connects directly from the integrator to the 9-pin male connector on the PC. All other cables need adapters. Use an RS-232-C extension cable if necessary.
5. **Install the appropriate keyboard overlay on your PC keyboard.**  
DATA1 is the directory automatically assigned to COM1, and COM1 is automatically assigned to a single integrator.

# Example—One Integrator



---

# Installing the IBM-AT Compatible PC with One Integrator

## Hardware Required

- RS-232-C cable and extension cable if integrator will be located more than 25 feet from the PC
- IBM-AT® or compatible PC
- HP 3393A, HP 3396A, or HP 3396 Series II Integrator with baud rate set to 9600 (factory default)
- Compatible monitor: CGA, EGA or VGA Monochrome, or EGA or VGA 16-color
- PC Keyboard overlay (located in the inside front pocket of this manual)
- Compatible Microsoft® or Logitech™ mouse (optional)

## Installing the Hardware

**1. Arrange the hardware.**

Standard cable length is 25 feet.

**2. Install the integrator.**

Follow instructions in the appropriate manual.

**3. Install the PC and mouse (optional).**

See the installation instructions for your PC and mouse.

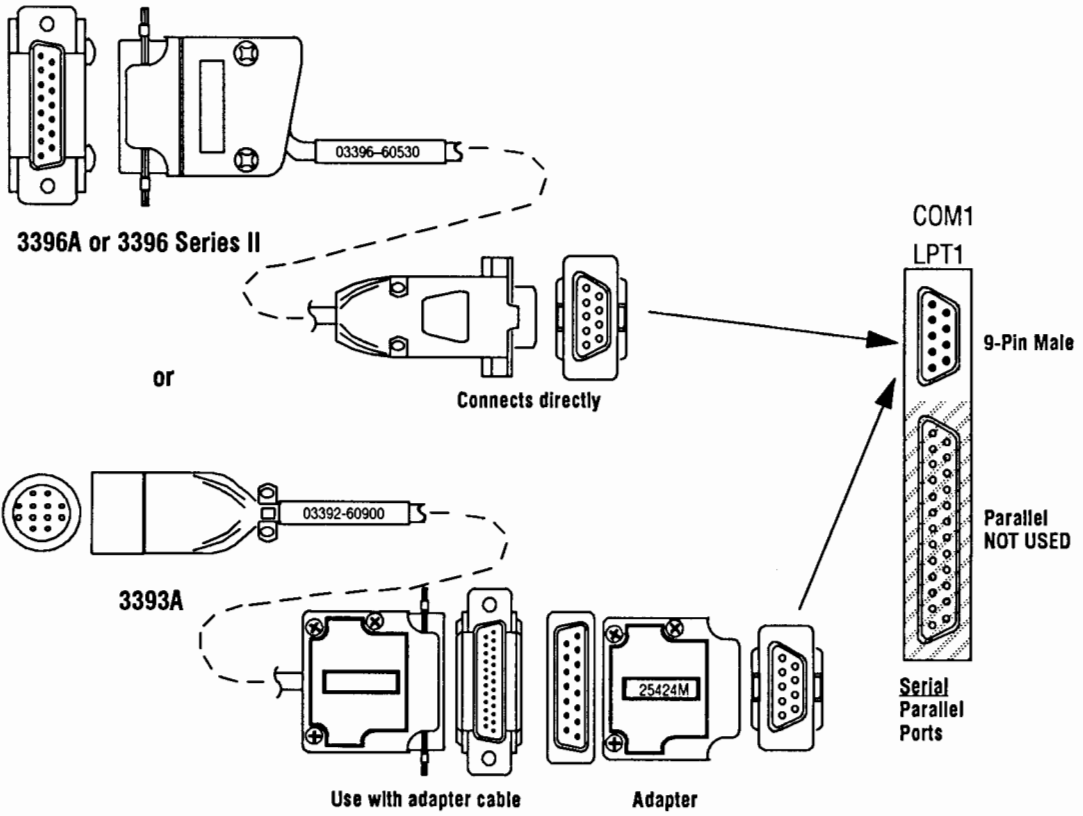
**4. Connect the RS-232-C cable between the IBM-compatible PC's serial port and the integrator's *computer* (RS-232-C) port.**

The 03396-60530 cable connects directly from the integrator to the 9-pin male connector on the PC. All other cables need adapters. Use an RS-232-C extension cable if necessary.

**5. Install the appropriate keyboard overlay on your PC keyboard.**

DATA1 is the directory automatically assigned to COM1, and COM1 is automatically assigned to a single integrator.

# Example—One Integrator



---

# Installing the HP Vectra with Multiple Integrators

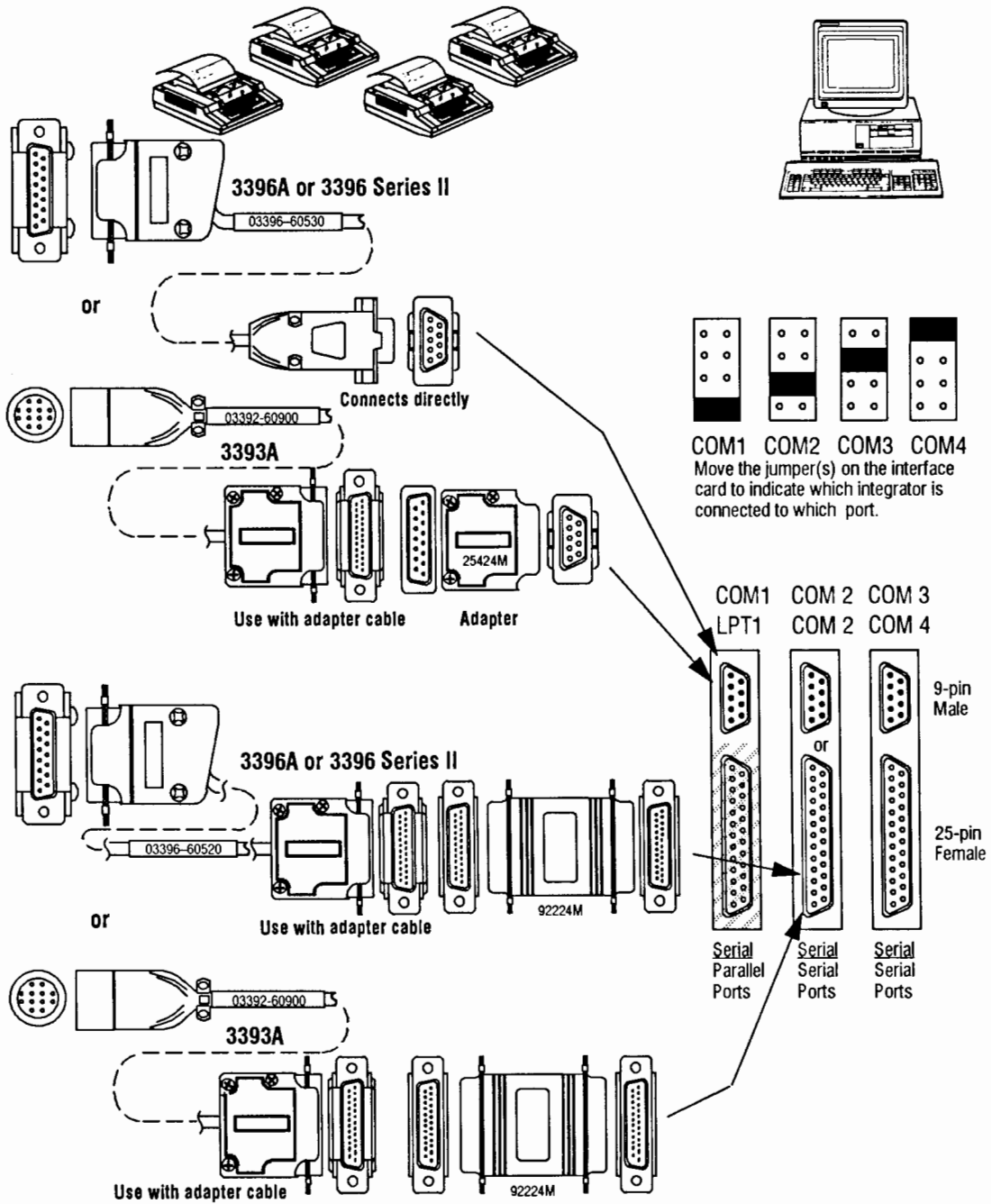
## Hardware Required

- One serial port for each additional integrator up to four.  
You will need an HP 24540B (serial/parallel interface card) or HP 24541B (dual serial interface card).
- HP Vectra (CS not recommended)
- Any combination of HP 3393A, HP 3396A, or HP 3396 Series II Integrators with the baud rates set to 9600 (factory default)
- RS-232-C cables for each integrator
- PC Keyboard overlay (located in the inside front pocket of this manual)
- Compatible Microsoft® or Logitech™ mouse (optional)

## Installing the Hardware

- 1. Arrange the hardware.**  
Standard cable length is 25 feet.
- 2. Install the HP Vectra and mouse (optional).**  
See the HP Vectra and mouse installation instructions.
- 3. Install the serial/parallel and or dual serial interface card(s).**  
Follow the installation instructions for the appropriate interface card(s).  
When addressing the cards, the integrator connected to COM1 will be INTEG1, COM2 will be INTEG2, etc. Only one integrator may be connected in the first dual serial port, because both slots are defined as COM2.
- 4. Install the integrators.**  
Follow instructions in the appropriate manual.
- 5. Connect an RS-232-C cable between each integrator *computer* (RS-232-C) port and an HP Vectra serial port.**  
  
An adapter is needed with the 03396-60520 or 03392-60900 cables.
- 6. Label the integrators with the appropriate COM number.**  
DATA1 through DATA4 are assigned to the corresponding integrators in COM ports 1 through 4.
- 7. Install the appropriate keyboard overlay on your PC keyboard.**

# Example—Two to Four Integrators





---

# Installing the IBM-AT Compatible PC with Multiple Integrators

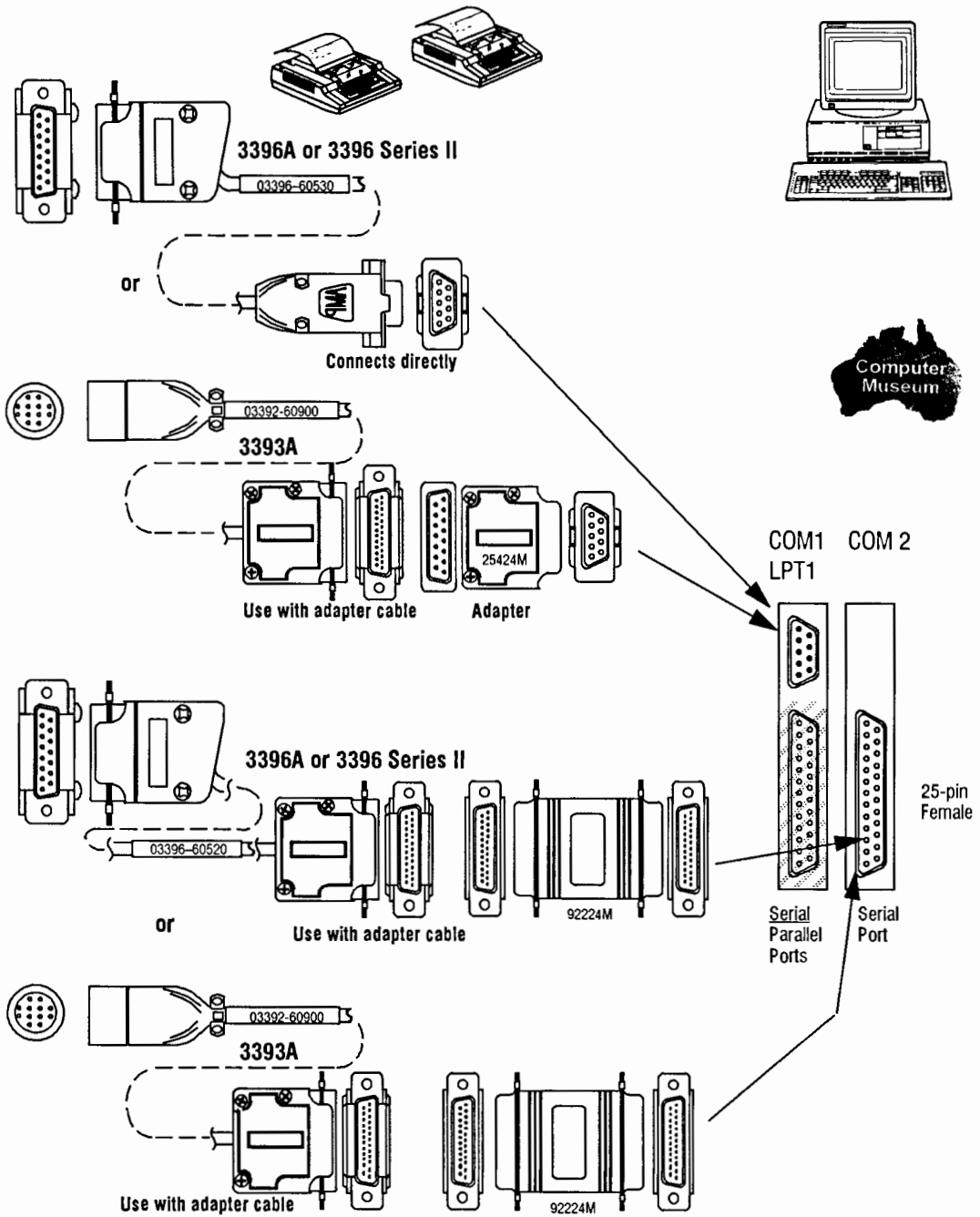
## Hardware Required

- One serial port for each integrator up to two. Digiboard's DigiCHANNEL MC/4™ is recommended for more than two integrators.
- Any combination of HP 3393A, HP 3396A, or HP 3396 Series II Integrators with the baud rates set to 9600 (factory default)
- RS-232-C cables for each integrator
- Compatible monitor: EGA, VGA Monochrome, or EGA, VGA 16-color
- PC Keyboard overlay (located in the inside front pocket of this manual).
- Compatible Microsoft® or Logitech™ mouse (optional)

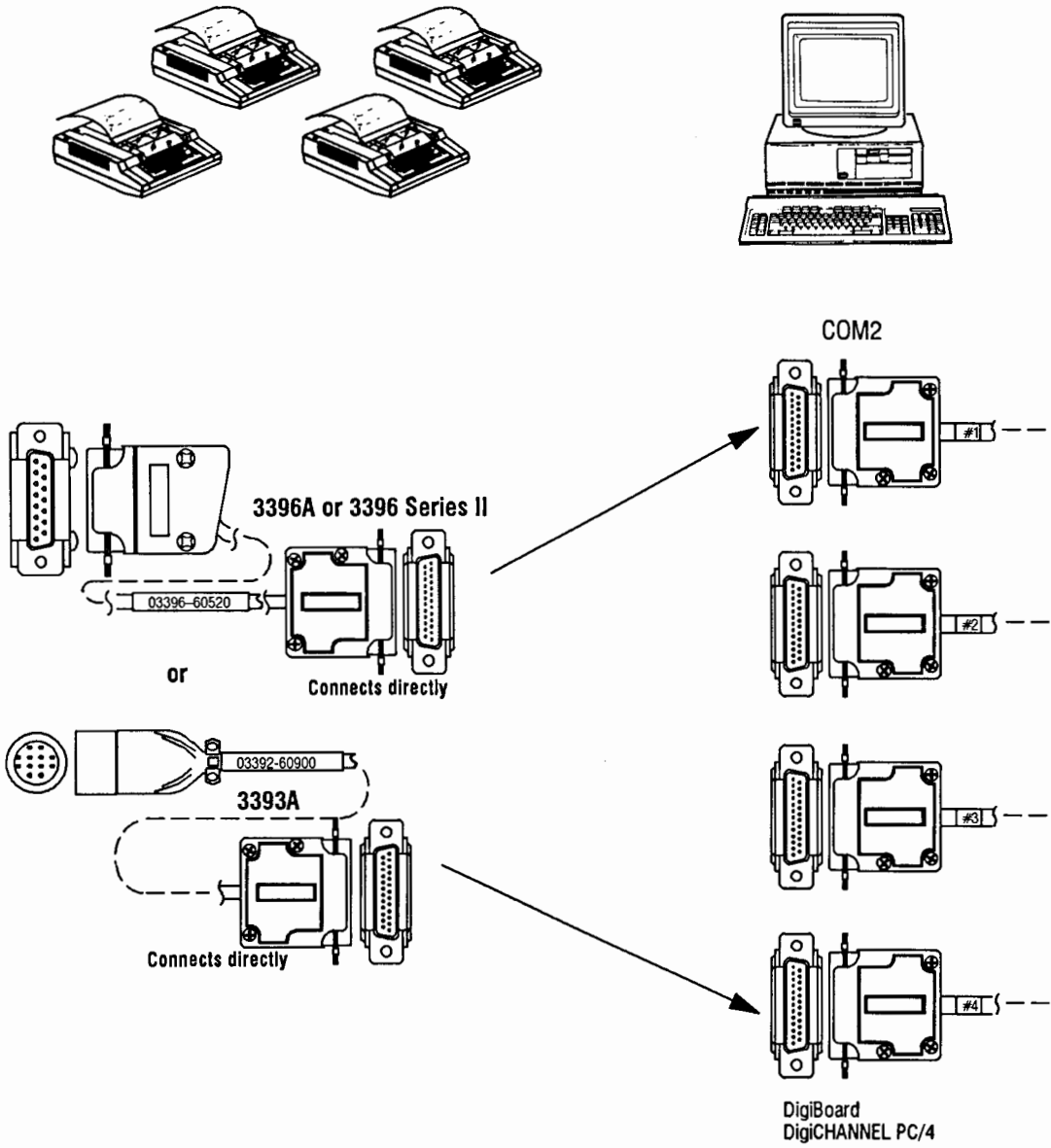
## Installing the Hardware

1. **Arrange the hardware.**  
Standard cable length is 25 feet.
2. **Install the PC and mouse (optional).**  
See the installation instructions for your PC and mouse.
3. **Install the multiplexer card.**  
Follow the installation instructions accompanying the multiplexer card. The DigiCHANNEL multiplexer must be addressed as COM2 in the PC; this is the default address as shipped from Digiboard.
4. **Install the integrators.**  
Follow instructions in the appropriate manual.
5. **Connect an RS-232-C cable between each integrator *computer* (RS-232-C) port and the PC serial port.**  
An adapter is needed with the 03396-60520 and 03392-60900 cables.
6. **Label the integrators with the appropriate COM number.**  
DATA1 through DATA4 are assigned to the corresponding integrators on COM ports 1 through 4 or on DigiCHANNEL cables 1 through 4.
7. **Install the appropriate keyboard overlay on your PC keyboard.**

# Example—Two Integrators



# Example—Three or Four Integrators


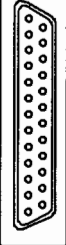

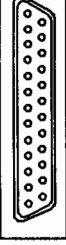


---

## Post-Installation Checklist (Hardware)

- Are all cables securely connected?
- If you have more than one integrator, are they marked with their appropriate COM numbers?

# Cables

HP Vectra PC	HP 3396	HP 3393	
<b>Parallel/Serial Card</b>			
	9-Pin Male	03396-60530	03392-60900 and 25424M
	Parallel	NOT USED	
<b>Dual Serial Card</b>			
	9-Pin Male	03396-60530	03392-60900 and 25424M
	25-Pin Female	03396-60520 and 92224M	03392-60900 and 92224M



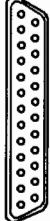
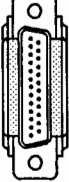
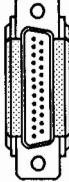
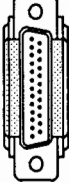
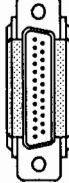
**NOTE**

**1. HP Vectras**

HP Vectras come standard with one serial and one parallel port. Extra serial ports can be added by installing an HP 24540B (one serial and one parallel port) and/or an HP 24541B (two serial ports) up to a maximum of four serial ports. The HP-IL mouse is *not* supported.

**2. All other PCs**

PCs normally support the use of only two RS-232-C serial ports. In cases where more than two integrators will be connected to a non-Vectra PC, or where RS-232-C ports are otherwise limited, we suggest the use of a multiplexer

IBM-AT Compatible	HP 3396	HP 3393	
	9-Pin Male	03396-60530	03392-60900 and 25424M
	25-Pin Male	03396-60520	03392-60900
	25-Pin Female	03396-60520 and 92224M	03392-60900 and 92224M
<b>DigiBoard DigiCHANNEL MC/4</b>			
	25-Pin Male	03396-60520	03392-60900
			
	25-Pin Male	03396-60520	03392-60900
			

board. HP Peak-96 has been tested with DigiBoard's DigiCHANNEL MC/4 four-port multichannel board. This product is available from and supported by: DigiBoard Inc, 6751 Oxford St, St. Louis Park, MN 55426. Phone (612) 922-8055.

---

# Installing the Software

## Software Requirements

- MS-DOS® Version 3.0 to 3.3
- 640 Kbytes of available RAM
- Three 5.25-inch disks *or* two 3.5-inch disks  
(located at the back of this binder)

## Installing the Software

1. **Place DISK 1 (either a 3.5-inch or 5.25-inch disk) into the flexible disk drive.**
2. **Type A: (or B:).**
3. **Type install.**
4. **Follow the instructions as you are guided through the installation.**

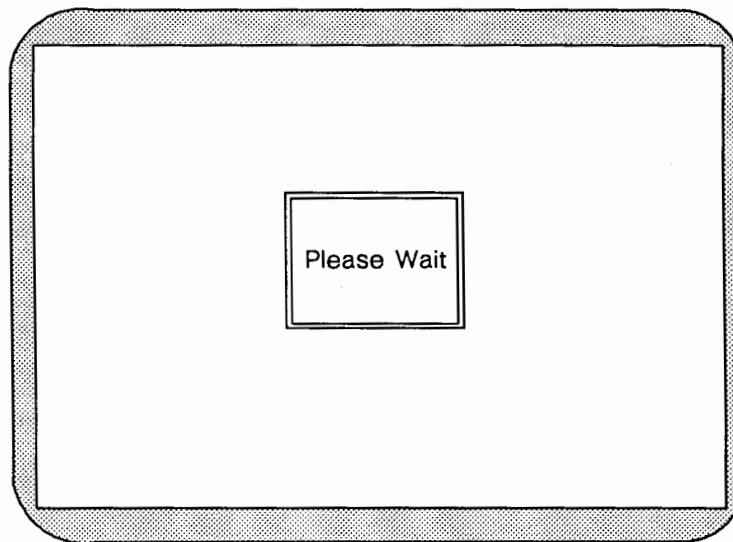
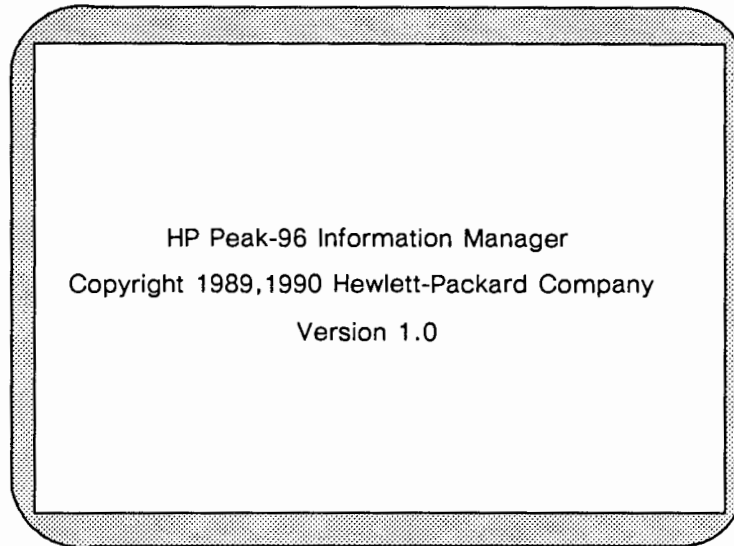
This installation program checks the hardware, the amount of memory available, and for the appropriate version of MS-DOS®, before installation. The program will prompt you for any information it needs and will indicate when to install the other disks.

5. **After installation is complete, start the program by pressing the [ENTER] key.**

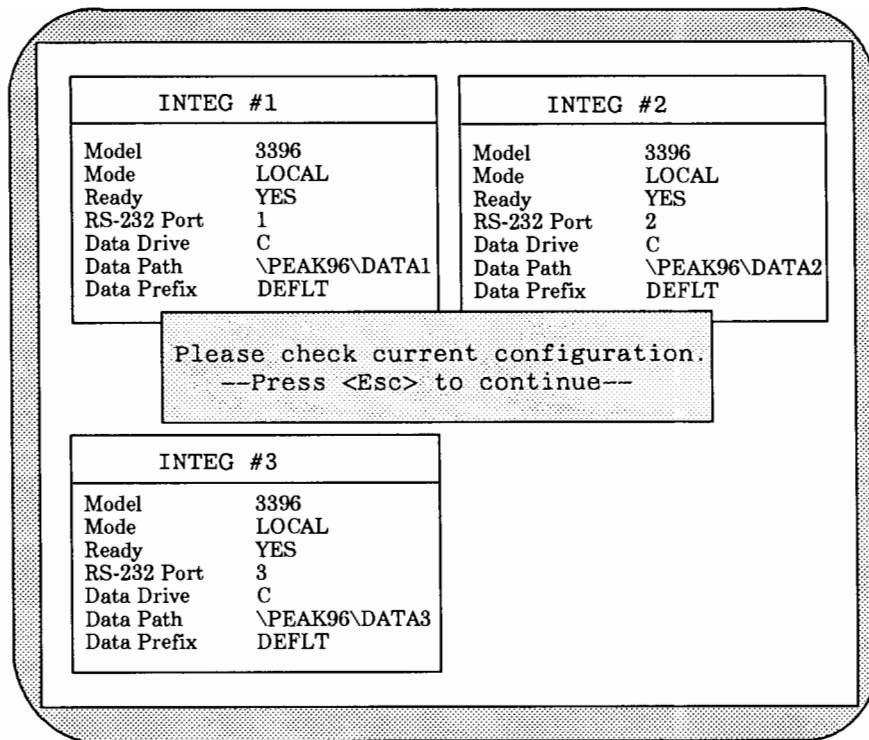
You will see the following message:

The HP Peak-96 program will now begin execution.

**Press any key to continue....**



*Instructions continue on next page...*



**6. Check the configuration to make sure it is correct. Press [Esc] at this point to reach the main screen.**

The PC automatically sets the date and time on the integrator.

While running HP Peak-96, you can check an integrator's configuration and status by selecting UTILITIES, INTEGRATOR UTILITIES, and then STATUS.

Do not disconnect and reconnect integrators while HP Peak-96 is running. Exit from the program, rearrange the integrators, and then restart the program. See chapter 1 for instructions on how to restart the program and for a short tutorial on using HP Peak-96.



---

## In Case of Difficulty

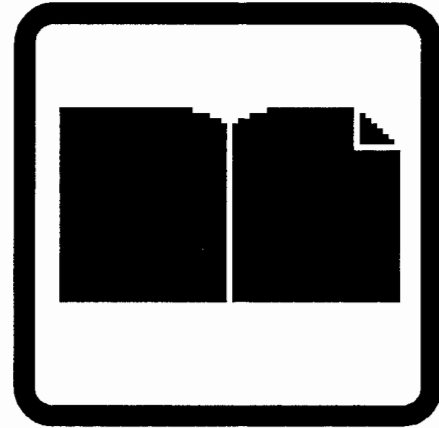
If you have difficulty installing HP Peak-96:

- Check the pre-installation checklist at the beginning of this Appendix.
- Check the post-installation checklist at the end of the hardware installation instructions.
- Call HP Service. In the U.S.A. send in your software registration card to receive your toll-free phone number for the Analytical Response Center.

# Appendix B

## Reference Information

---



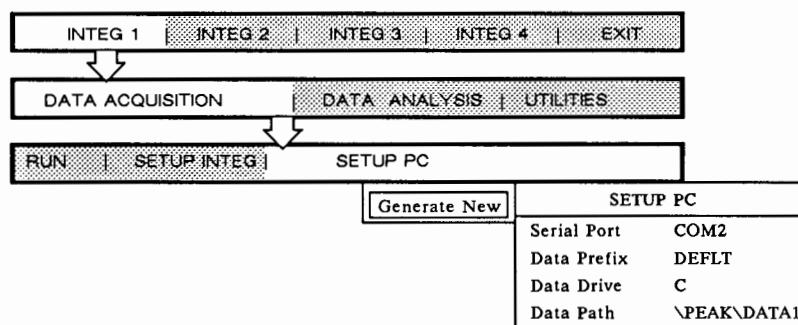
**This section contains information useful for the experienced user.**

### **In this chapter....**

- Understanding the PC Configuration ..... B-2
- Switching to Another Program ..... B-6
- Understanding Foreground/Background Operation ..... B-8

# Understanding the PC Configuration

The current serial port, data path, data drive, and data prefix are listed in the SETUP PC menu. Changing any of the default values changes the PC's configuration. If you exit from the program, HP Peak-96 will remember its last configuration upon reentry.



## Serial Port

The serial port cannot be changed from the SETUP PC menu. You must rewire the system before installing HP Peak-96 to change the COM port listing for any integrator. See Appendix A for installation instructions.

## Data Prefix

The data prefix provides an alternate way to name data files. The data prefix consists of five characters beginning with a *letter*. The current run number (up to three digits) is appended to the data prefix.

Changing the data prefix every day allows you to use the date to identify files. If more than 999 runs are started before the data prefix or run number are changed, the run number will cycle back to 1. **Note:** All files being transferred from the integrator to HP Peak-96 will be renamed with the data prefix.

If another integrator is added to the system, all data prefixes will automatically be set back to DEFLT. The data prefix should be set to DEFLT when the integrator is running a renaming program or doing reintegrations.

## Example

A data file using the DEFLT data prefix might have the name:  
Q0FB144D.BNC.

If you change the data prefix to JUN26 before the run to indicate that this file has been generated on June 26, the file name will now show up in the directory as:

JUN263.BNC

The 3 is appended to the data prefix to indicate the third run of the day.

## Data Drive

The data drive is the hard drive on which you have installed HP Peak-96. All files will be assigned to this drive unless it is changed. You cannot change the data drive in a wildcard box; you must use the SETUP PC menu.

You can display data directly from a flexible disk if you rename the data drive and path to match the pathway to the flexible disk file.

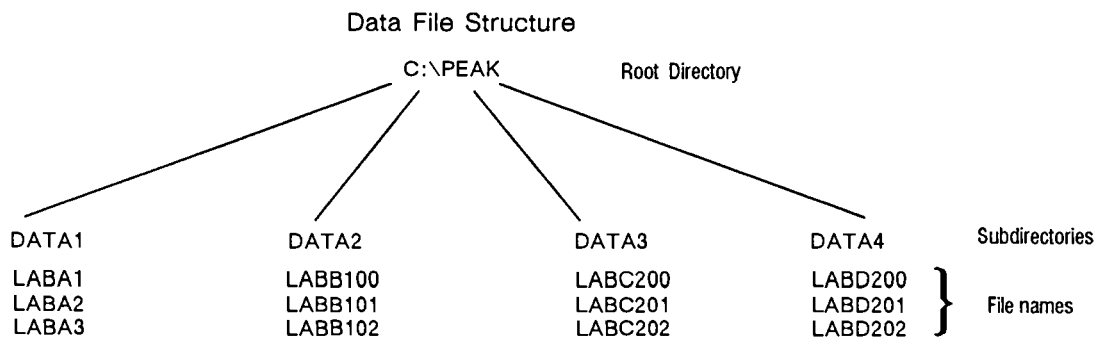
## Data Path

The data path is determined at installation but may be changed from the SETUP PC menu. To change the name of the current directory, exit from the program and manipulate the files and directories in DOS. The minimal data path is \ .

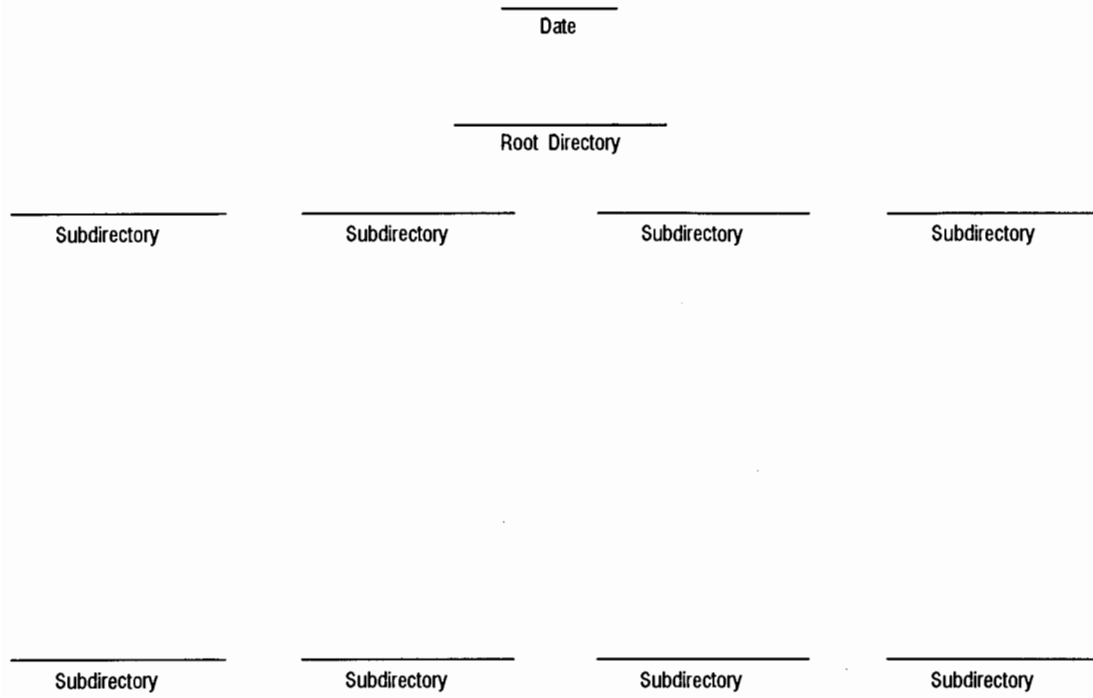
If you have problems with the data path, you can exit the program and type `peak96 new` at the appropriate directory prompt to reset the system to its original data path.

Keep track of your file structure using the form on the next page. Follow the example file structure below.

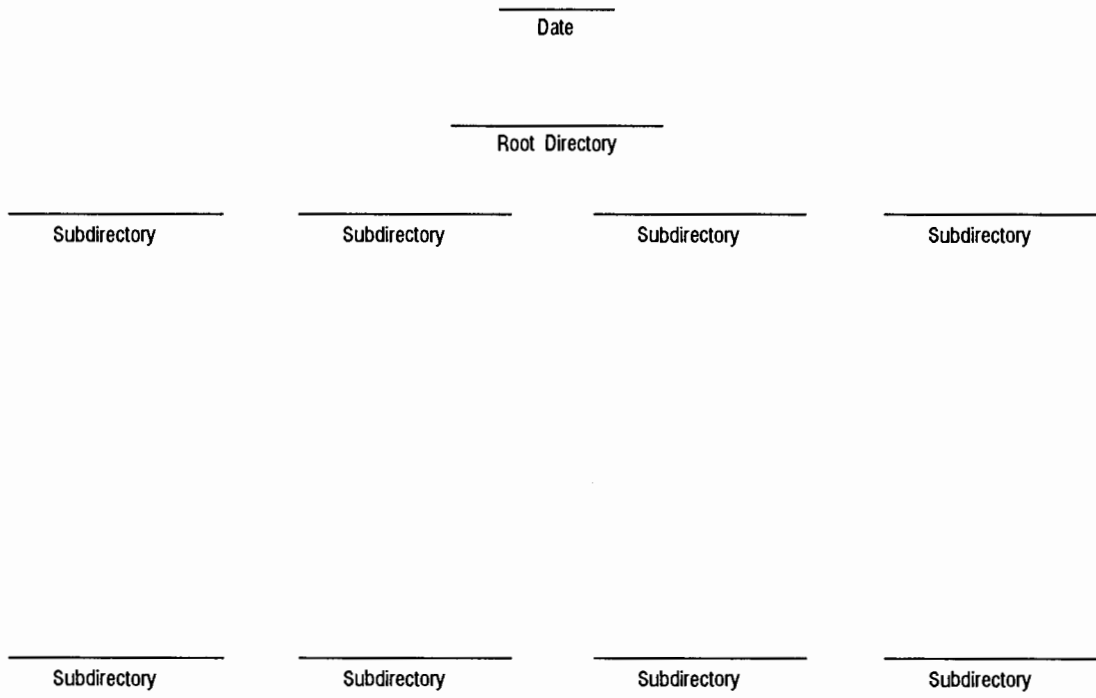
## Example



# Data File Structure



## Data File Structure

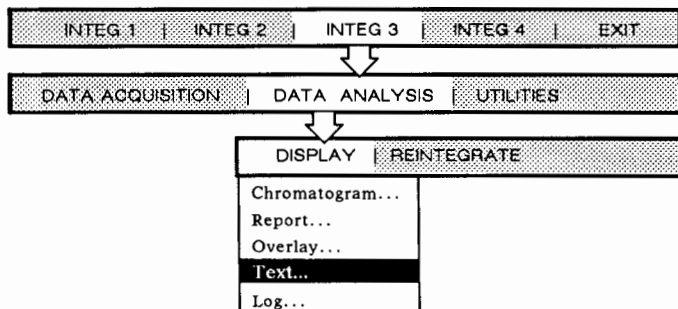


---

## Switching to Another Program

The EXIT menu allows you to switch directly to another program when exiting from HP Peak-96 if a one line .PGM file exists. A number of .PGM files can be created so that you can choose from up to 12 different programs when exiting from HP Peak-96.

To create a .PGM file:



1. **Display the text file called EMPTY.TXT.**  
See instructions for displaying text files in chapter 3.
2. **Create a one-line program that specifies the data drive, data path, and executable filename of the program you want to switch to.**  
You must specify the complete path from the disk to the program. A comma separates each parameter and ends the line. Do not use spaces.

### Example

```
C:\WINDOWS,EXCEL.EXE,
```

You may also add up to nine command line arguments to be passed to the program. Each argument is listed after the executable file name and separated by commas.

```
C:\WINDOWS,EXCEL.EXE,OPTION1,OPTION2,
```

**3. Press [Esc] when your program is complete.**

All leading or trailing spaces must be eliminated from the file.

Save Changes
No
Yes

**4. Save your changes to the file with a .PGM extension.**

Text Filename: EXCEL.PGM
--------------------------

**5. Copy the new .PGM file to the subdirectory that is one level up from where you created it.**

Go to UTILITIES, FILES, and then COPY. For more information about copying files, see chapter 5.

To switch to another program:

**6. Go to EXIT on the main menu.**

INTEG 1   INTEG 2   INTEG 3   INTEG 4   EXIT
Where do you want to go?
Exit to DOS
Return to Peak96
Switch to another program

**7. Select Switch to another program.**

The names of all .PGM files will be displayed.

Switch to:
EXCEL
WINDOWS

**8. Highlight the program you wish to switch to and press [ENTER].**

HP Peak-96 will immediately exit to the specified program.



---

## Understanding Foreground/Background Operation

While the PC is communicating with an integrator, background activity is taking place. The PC displays the words BUSY or UNAVAIL at the top of its screen.

When BUSY is displayed on the screen, file conversations are active, but most local HP Peak-96 functions may be accessed. For example, while a run is in progress, you can edit a method, copy a file, or display a chromatogram or report that is stored on the PC.

When UNAVAIL is displayed on the screen, no other functions are accessible. For example, in remote keyboard no other activity can be initiated.

Foreground activity involves only the PC. When the PC is occupied with or available for foreground activities, AVAIL is displayed on the PC screen. AVAIL indicates that no file conversations are active between the integrator and the PC.

Background operation allows you to operate entirely from an HP 3393A or HP 3396 Integrator. In this mode, HP Peak-96 will act as a fileserver for your integrators. Use the H: disk specifier to indicate the PC.

# Index

## A

ANALYZE command, 4-2  
application programs, 4-3  
AREA % command, 4-3  
area rejection, 4-3  
ASSIGN command, 4-3  
attenuation, 4-3

## B

background operation, B-8  
BASIC programs, writing, 4-4

## C

cables, A-14  
calibration  
  integrator task, 4-4  
  listing, 4-7  
  selecting at PC, 2-4  
chart speed, 4-4  
checking system readiness, 2-8  
chromatogram display screen, introduction to, 1-12  
chromatograms  
  comparing, 3-6  
  displaying, 1-12, 3-2, 3-6  
  enlarging, 3-4  
  overlying, 3-6  
  problems displaying, 6-5  
  transferring, 2-2  
  zooming in, 3-5

## commands

ANALYZE, 4-2  
AREA %, 4-3  
ASSIGN, 4-3  
BA, 4-4  
CREATE, 4-4  
DATE, 4-4  
DIRECTORY, 4-6  
FORMAT, 4-6  
HELP, 4-6  
IDENTIFIER, 4-7  
INET\_CONFIGURATION, 4-7  
LOAD, 4-8  
LOCK, 4-8  
NOTEPAD, 4-9  
PACK, 4-10  
PURGE, 4-10  
READY, 4-10  
RECONFIGURE, 4-10  
RENAME, 4-11  
STORE, 4-12  
SYSTEM, 4-12  
TIME, 4-12  
UNLOCK, 4-14  
XADDRESS, 4-14

configuration of PC, B-2

converting data for export, 3-11

## copying files

  at integrator, 4-4  
  at PC, 5-2  
  from integrator to PC, 2-2  
  from PC to integrator, 5-7  
  text for import, 5-9

CREATE command, 4-4

[CTRL] [BREAK], 4-4



## D

data  
  converting for export, 3-11  
  files not renamed, 6-7  
  storing at PC, 2-7

data drive, B-3

data structures  
  data drive, B-3  
  data path, B-3  
  data prefix, B-2  
  serial port, B-2

DATE command, 4-4

default device (disk), 4-5

deleting, 4-5

directory  
  all files, 4-6  
  calibrations, 4-6  
  cannot access, 6-8  
  methods, 4-6  
  reports, 4-6  
  sequences, 4-6  
  text, 4-6

DIRECTORY command, 4-6

disk drive  
  default, 4-5  
  for data, B-3

displaying  
  chromatograms, 3-6  
  reports, 3-8  
  text files, 3-8

## E

editing, 4-6  
  calibrations, 4-6  
  methods, 2-6, 4-6  
  reports, 3-9, 4-6  
  sequences, 4-6  
  text, 4-6  
  text files, 3-9  
enlarging chromatograms, 3-5  
exiting from HP Peak-96, 1-13  
external events, 4-6

## F

files  
  accessing log, 6-9  
  copying, 5-2  
  deleting, 5-4  
  renamed by mistake, 6-7  
  renaming, 5-6  
  text files  
    exporting, 5-8  
    importing, 5-9  
    managing, 5-8  
    transferring, 5-7  
floppy disk, accessing files on, B-3  
foreground operation, B-8  
FORMAT command, 4-6  
function keys, description, 1-8

## H

help, online, 1-9  
help, contacting HP service, 6-2  
HELP command, 4-6  
HP Peak-96  
  installing, A-15  
  introduction to, 1-2  
HP Vectra  
  installing with multiple integrators, A-8  
  installing with one integrator, A-4

# I

IBM-AT, installation, A-6  
IDENTIFIER command, 4-7  
INET\_CONFIGURATION command, 4-7  
installation  
  checklists, A-3, A-13  
  for multiple integrators, A-8, A-10  
  for one integrator, A-4, A-6  
  with HP Vectra, A-8  
  with IBM-AT compatible PC, A-6, A-10  
installing, with HP Vectra, A-4  
integration functions, accessing, 4-7  
integrator  
  communication difficulties, 6-6  
  deleting files, 5-5  
integrator tasks, 4-14  
  application programs, using, 4-3  
  BASIC programming, 4-4  
  changing default disk, 4-5  
  deleting calibrations, 4-4  
  deleting methods, 4-9  
  deleting sequences, 4-11  
  deleting..., 4-5  
  displaying reports, 4-11  
  editing, 4-6  
  editing calibrations, 4-4  
  editing methods, 4-9  
  editing reports, 4-11  
  editing sequences, 4-11  
  external events, programming, 4-6  
  integration functions, setting, 4-7  
  listing, 4-7  
  listing status, 4-11  
  option dialogs, using, 4-9  
  plotting, 4-10  
  preparing, 4-10  
  preparing calibrations, 4-4  
  preparing methods, 4-9  
  printing reports, 4-11  
  printing sequences, 4-11  
  setting area rejection, 4-3  
  setting attenuation, 4-3  
  setting chart speed, 4-4  
  setting peak width, 4-10

integrator tasks, (continued)  
  starting runs and sequences, 4-11  
  stopping runs and sequences, 4-12  
  threshold, 4-13  
  time programming, 4-13

# K

keyboard, using, 1-4  
keys, active, 1-7

# L

listing  
  calibrations, 4-7  
  methods, 4-7  
  reports, 4-7  
  sequences, 4-7  
  text, 4-7  
LOAD command, 4-8  
LOCK command, 4-8  
log file, 6-9

# M

main screen  
  data path, 1-7  
  function keys, 1-8  
  functional areas, 1-7  
  introduction to, 1-6  
  menus, 1-7  
  status, 1-7  
methods  
  creating, 4-9  
  downloading, 2-11  
  editing, 4-9  
  editing at PC, 2-6  
  listing, 4-7  
  selecting at PC, 2-5  
mouse, using, 1-5  
moving files to the PC, 2-2

## N

NOTEPAD command, 4-9

## O

online help, 1-9

option dialogs, 4-9

overlying chromatograms, 3-6

## P

PACK command, 4-10

page down, log file, 6-9

page down, how to use, 1-11

path, for data, B-3

PC

- calibration, 2-4

- communication difficulties, 6-6

- locks up, 6-3

- methods, 2-5, 2-6

- sequences, 2-10, 2-11, 2-12

- starting a run from, 2-9

- storing data and reports, 2-7

- transferring files, 2-2

peak width, 4-10

plot, 4-10

port, serial, B-2

post-installation, checklist, A-13

pre-installation

- checklist, A-3

- tools needed, A-3

prefix, data, B-2

preparing, 4-10

printing

- reports, 3-10

- text files, 3-10

problems

- all files renamed, 6-7

- cannot access integrator directory, 6-8

- communication difficulties, 6-6

- data files not renamed, 6-7

- display chromatogram function not working, 6-5

- integrator doesn't respond to PC, 6-4

- PC locks up, 6-3

programming, 4-10

PURGE command, 4-10

## R

READY command, 4-10

RECONFIGURE command, 4-10

remote keyboard screen, introduction to, 1-10, 4-2

RENAME command, 4-11

reintegration, 4-2

reports

- displaying, 3-8

- editing, 3-9

- listing, 4-7

- printing, 3-10

- storing at PC, 2-7

resetting the run number, 2-11

run

- preparing to begin a, 2-4, 2-10

- starting from PC, 2-9

- stopping a, 2-9

run number, resetting, 2-11

## S

SET command, 4-11

selecting

- calibration, 2-4
- method, 2-5

sequences

- editing, 2-11
- integrator tasks, 4-11
- listing, 4-7
- selecting, 2-10
- starting from PC, 2-12
- stopping, 2-12

software

- installing, A-15
- requirements, A-15

start run/sequence, 4-11

starting

- run, from PC, 2-9
- run, preparation, 2-4
- sequence from PC, 2-12

starting a run, preparation for, 2-10

Starting the program, 1-2

status

- listing integration, 4-11
- listing PC, B-2

stop run/sequence, 4-12

stopping

- runs, 2-9
- sequences, 2-12

STORE command, 4-12

storing

- data at PC, 2-7
- reports at PC, 2-7

switching to another program, B-6

SYSTEM command, 4-12

## T

text files

- displaying, 3-8
- editing, 3-9
- printing, 3-10

threshold, 4-13

TIME command, 4-12

time programming, 4-13

tools, needed for installation, A-3

transferring files, to PC, 2-2

## U

UNLOCK command, 4-14

## V

Vectra. *See* HP Vectra

## X

XADDRESS command, 4-14

## Z

zero, 4-14

zooming chromatograms, 3-5

