

What's New In The 2000 CD InfoBase

1. If you are a first time buyer of the CD InfoBase, please see the enclosed 1999 instruction manual. Installation is quick and easy. Here's what's new:
2. 1999 issues of *HP Palmtop Paper* can be found by clicking "The HP Palmtop Paper" on the main menu.
3. 1999 *ON DISK* software descriptions and locations can be found by clicking "HP Palmtop Paper ON DISK" on the main menu.
4. There is LOTS of new software and an in depth Lotus tutorial that you can read about and find by clicking "Software Bonanza."
5. A Web (HTML) version of 1991-1999 issues can be found on the main CD InfoBase CD in subdirectory \ptphtml. To start load file \ptphtml\index.htm into your web browser. Note that 200LX web browser, HV, can be found at \ONDISK\98-DISK\98MAYJUN\HV\HV.EXE
6. Year 2000 Gutenberg electronic books and documents are found in \gutenberg on the main CD. Previous years Gutenberg text is found on the '99 Project Gutenberg Bonus CD. For a listing of books and documents click on "Project Gutenberg E-text."
7. If you are upgrading, you can run this version by inserting the main CD and clicking on the existing icon. If you store CD InfoBase files on your hard drive, copy the files from the \CD directory to the directory on your hard drive where you store CD InfoBase files (probably C:\PTPBASE).

2-CD
Deluxe
Edition

The HP Palmtop Paper's **1999 CD InfoBase**

- 49 issues of The HP Palmtop Paper (1991-1998) and Bonus Issues all in an easy to read hypertext format.
- HP 100/200LX User's Guide also in hypertext format.
- All the freeware and shareware from the 45 issues of The HP Palmtop Paper ON DISK and Bonus issues plus all 5 PowerDisks (1991-1997).
- Complete MicroREF DOS and Lotus 1-2-3 manuals.
- 100/200/700LX Developer's Guide plus PAL and HP EXM Software.

NEW For 1999

- PC In Your Pocket: Information When You Need It—the complete text and pictures from the Book now in HTML format. Read it on your Palmtop with Hypertext Viewer (HV).
- The Developer's Guide now in HTML format so it can be read from your Palmtop.
- Software Bonanza: including several formerly commercial programs such as Lotus Agenda and Magellan, WordPerfect's DataPerfect, PC-File, Accounting Pro for DOS plus over 100 DOS shareware and freeware programs that will let your Palmtop do everything from Palmtop Publishing to Statistics to playing games.

BONUS CD

We have filled an entire CD with as many e-texts as possible by special arrangement with the folks at Project Gutenberg. Copy to your Palmtop and view in Vertical Reader (VR100) or Memo.

Thaddeus Computing, 110 North Court, Fairfield, Iowa 52556
515-472-6330 800-373-6114 Fax: 515-472-1879

2-CD DELUXE EDITION

THE
**HP Palmtop
Paper's** **1998**
CD InfoBase

The HP Palmtop Paper
and Bonus Issues in an
easy-reading hypertext
format

HP 200LX User's Guide
(for 100/200LX users)

DOS and Lotus 1-2-3
MicroREF Manuals

All the freeware and shareware
from The HP Palmtop Paper
On Disk and Bonus Issues
plus PowerDisks

HP 100/200LX Developer's
Guide plus PAL &
HP EXM Software

Over 1000 Project
Gutenberg E-Text files
on a BONUS CD

Notices:

***The HP Palmtop Paper's* 1998 CD INFOBASE**

Copyright © 1998

Thaddeus Computing, INC

110 North Court

Fairfield, Iowa 52556 USA

All rights reserved.

Neither this documentation nor the software may be copied, photocopied, reproduced, translated, or reduced to any electronic medium or machine-readable form, in whole or in part, without the prior written consent of Thaddeus Computing.

Other products available from Thaddeus Computing

Thaddeus Computing provides a wide array of portable computing-related knowledge products including *The HP Palmtop Paper* (print and disk versions), and *Handheld PC Magazine*, serving Windows® CE-based handheld PC users.

In addition, Thaddeus Computing has introduced **Thaddeus Palmtops!** We sell upgraded DoubleSpeed 8 Meg new and like-new palmtops; upgrade customer palmtops to DoubleSpeed and 8 Meg; and sell an assortment of palmtop accessories like cables, adaptors, PC cards and Connectivity Packs.

For more information about Thaddeus Computing products and services, please write, fax, or call one of the numbers below.

800-373-6114

515-472-6330

Fax: 515-472-1879

Double-CD Deluxe Edition

The HP Palmtop Paper's

1998 CD INFOBASE

Table of Contents

Installation	2
Navigating.....	3
Other Features.....	9
Also on the CD	12
Troubleshooting	15

Note: The following convention is used throughout this document: Menu commands are written in series separated by a pipe character "|". For instance, **File|Preferences|Searches** instructs the user to select **File** from the main menu; **Preferences** from the pull-down menu that appears; and **Searches** from the next list of options that appear.

Installation

Installation of the **CD InfoBase** can be done automatically or manually.

NOTE: If you already have a previous version of the CD InfoBase installed, you should be able to run this version from the existing icon. If that fails, proceed with a complete installation.

Automatic Installation

1. From Windows, run D:\INSTALL where D is the letter of your CD drive (**File|Run D:\INSTALL**). This process will install about 1.5 megabytes of data to your local drive and create a program group in Program Manager with the **CD InfoBase** icon in it.
2. Activate the **CD InfoBase** icon to run *The HP Palmtop Paper's CD InfoBase*.

Manual Installation

Run Install as in item 1 above and follow the directions for a manual installation. (Manual.txt contains these instructions and can be found in the root directory of the CD, and in C:\PTPBASE after automatic installation.)

Navigating

Overview of CD InfoBase Layout

Here are a few concepts about the design and layout of the **CD InfoBase** that you should be familiar with:

Topics

Topics are the main building blocks of the **CD InfoBase**. A topic is a subsection of a document (i.e., *The HP Palmtop Paper* May/June 1993). It may be as short as a single Quick Tip in a *Palmtop Paper*, or as long as an entire chapter in the **HP 200LX User's Guide**. No matter where you are in HyperReader! (the program the **CD InfoBase** uses), you are in a topic.

Generally, the Table of Contents for any given document is the first topic. You may move forward or backward sequentially through topics using the **[Next]** and **[Prev]** icons. If you know a specific topic's Topic Number (the Current Topic Number is found by selecting **Navigate|Goto...** from within that topic), you may go directly to it using the **Goto...** command in the **Navigate** menu.

Topic Numbers also play a role in printing. (See **Printing**)

Documents

The idea of Documents can be a little confusing in the **CD InfoBase** because the term refers to two different concepts.

1. Document As File: In the **CD InfoBase**, every file that you can open and view in HyperReader! is a document. For instance, each individual issue of *The HP Palmtop Paper* is a document. The specific title of the document you are currently in (i.e., May/June 1994) appears at the very top of the screen.

Note: In *The HP 100/200LX Developer's Guide*, every chapter is a document (separate file) whereas the entire *HP 200LX User's Guide* is one single document (file).

2. Document As File Group: This pertains to the Find functions. When you open the Find dialog box by clicking the **Find** icon, pressing Ctrl-F, or choosing **Find** from the **Search** menu, you will see a Document box with all items checked. These "Documents" do not refer to individual documents as described above, but rather, groups of documents combined by category. For instance, PTP95 refers to all 1995 issues of *The HP Palmtop Paper*. The Find dialog box is the only place where Documents are combined into groups.

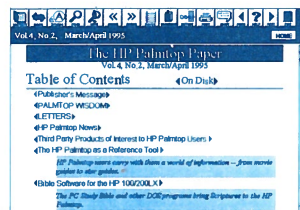
Getting Around

There are many ways to navigate in HyperReader!. Briefly, they include:

Following Hotlinks:

Any word or title enclosed in half diamonds are links that will take you to the area indicated by the text. You may click on them or situate the cursor between them and press Enter or F1.

Full diamonds appear at the top of *The HP Palmtop Paper On Disk* Tables of Content, and will return you to the Table of Content for that particular printed issue.



The text between half diamonds is "hot".

Other hotlinks include icons and buttons like the six large blue buttons at the bottom of the opening screen.

[Next] & [Prev] Icons

These will take you forward or backward sequentially through the topics of a document. If the **[Prev]** icon fails, press Alt-r and try again.

[Contents] Icon & HOME Button

The **[Contents]** icon will always take you back to the first topic in the document you are currently in, generally the Table of Contents for that document.

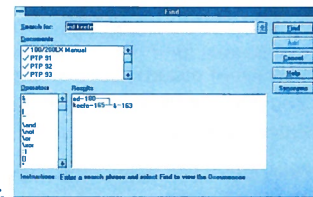
The **HOME** button will take you back to the Opening Screen.

[Bookmark] Icon

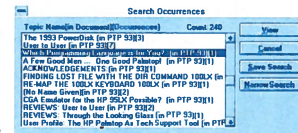
You may leave bookmarks anywhere in the **CD InfoBase** to allow speedy return.

[Find] Icon

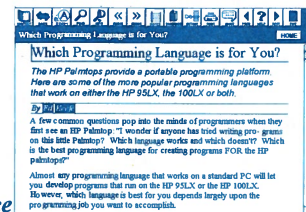
Find is one of the most powerful functions of HyperReader!. After clicking on the **[Find]** icon (or choosing **Find** on the **Search** menu, or pressing Ctrl-F) you will see a dialog box with an area for typing in your search query (see figure 1 below). When you have typed in the word or phrase you would like to search for, click on **Find** or press Enter.



1. Find dialog box.



2. Search Occurrences



3. Selected Occurrence

The next box you see is a list of Search Occurrences (see figure 2 above). Each listing is the name of the topic in which an occurrence appears, (as shown below; Reviews: IC Cards) the general category of publication in which it appears (PTP93 refers to an issue of *The HP Palmtop Paper* from 1993) and the number of occurrences in that topic (2).

Reviews: IC Cards [PTP93] [2]

This list of occurrences is designed to help you further narrow your search. You may double-click on an item to go to it, or simply highlight it and press Enter. This will take you to the actual occurrence (see figure 3 above).

Once you have gone to the location of a Search Occurrence, you may travel forward or backward through the list of occurrences, without returning to the Search Occurrences box, by clicking on the [Search>>] or [Search<<] icons. You may see the list of occurrences again by clicking on the [Hits] icon.

Whenever you go to the Find dialog box, you may click the down-arrow (to the right of the **Search For:** box) to see a list of previous search queries from which you may choose. (Search queries are saved in the HRW.INI file in C:\PTPBASE.)

You may also narrow your search by unchecking documents in which you are not interested. If you're looking for a reference you remember from a 1994 or 1995 issue of *The HP Palmtop Paper*, you may uncheck all but **PTP94** and **PTP95** to speed the search and avoid irrelevant Hits. (By default, all items are checked every time you open the Find dialog box. The default cannot be changed.)

Also appearing in the Find dialog box is a list of Boolean search operators from which you may choose. For more information on using Boolean search, see the "Boolean Search Instructions" under "Other" in the Main Table of Contents (accessed by clicking the [Contents] icon from the Opening Screens).

Further Search options are available by changing the settings in **File|Preferences|Searches**. More information on Find is available in the on-line Help feature.

Escape & Right Mouse

Escape and Right Mouse are the same. They allow you to back up along your own trail.

[History] Icon

Clicking on the [History] icon will display a box showing where you've been and how long you've been there. You may return directly to any of these locations by double-clicking on its listing or by highlighting it and pressing Enter.

Other Features

Export Text (Ctrl-E)

To export the text of an article in *The HP Palmtop Paper* (or any other topics in the **CD InfoBase**) to an ASCII file on a disk drive on your PC, choose **File|Export Text**. You will then be asked to provide a name for the file, as well as a location for the file to be written to. You may choose **Options** from the **Export Filename** dialog box, such as Send Hard Returns, use WordPerfect formatting, or apply header info.

Text is exported from one topic at a time. If you would like to save multiple topics to the same file, select the same filename as the first when exporting subsequent topics, and select **Append**.

If you don't wish to export the text from the entire topic, simply highlight the portion of text you wish to export and perform the same **Export Text** procedure as above.

Copy & Paste

Another option for capturing text from the **CD InfoBase** is to simply Copy & Paste using normal Windows conventions.

1. Highlight the text you want to Copy using either the mouse or keyboard commands.
2. Press Ctrl-C or choose **Copy** from the **Edit** menu.
3. To copy additional text to the text you've already copied to the Clipboard, you can use the **Append w/Copy** (Ctrl-F7) command.
4. Once you have compiled the text you want into the Clipboard, you can enter a word processing program and use **Paste** (Ctrl-V in Windows programs) to insert the text.

Print

There are two ways of printing:

1. Use the **[Print]** icon to print the current topic.

Or

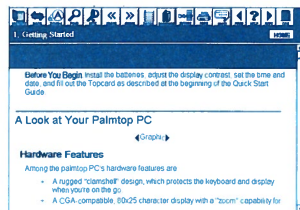
2. Use **File|Print** if you want to select a group of topics to print together. You may also print a series of topics by entering the correct topic numbers in the Print dialog box. The first topic number that appears is that of the topic you are currently in. To determine the topic number of the last topic in the series you wish to print, go to that topic and find the **Current Topic Number** by selecting **Goto...** from the **Navigate** menu. Then cancel and return to the first topic in the series you wish to print, select **Print** from the **File** menu, and enter the topic number of the last topic to print in the **To:** box.

Also, the **Print** command under the **File** menu allows you to highlight specific paragraphs and print them separately. Any paragraph that is highlighted even partially will print in its entirety. (The **[Print]** icon will print the entire topic, not just highlighted text.)

Also on the CD

Graphics

Graphic links appear throughout the **CD InfoBase**. They are usually red text between half diamonds. Occasionally you will also see large or complex tables as graphics. All of the graphics are scanned at screen resolution of 75dpi so that all users will be able to use them. Unfortunately, that means that the graphics are not always as crisp as could be desired.



Screen with graphic link.

If a graphic appears with scroll bars along the bottom and right side, you may use these to move around in the image. Images with scroll bars can also be zoomed in on by using your left mouse button to draw a square around the area you wish to zoom. Graphics without scroll bars cannot be zoomed.



Graphic link activated.

Software/Freeware/Shareware

All the software from *The HP Palmtop Paper On Disk* 1991-1997, as well as the **Power Disks**, the **Best Tips** disks, the **PAL** software (Palmtop Applications Library v 1.6), and the **HPEXMTLS** software is provided on the CD. Most of these have Tables of Contents complete with brief abstracts about the software for you to peruse. For instance, *The HP Palmtop Paper On Disk* November/December 1997 Table of Contents can be accessed from the Table of Contents for the printed version of that issue.

All software has been decompressed. All decompressed programs are in subdirectories named for the programs. These subdirectories, in turn, are in subdirectories named for the specific issue in which they appear. For instance, the program Remkey, originally provided on *The HP Palmtop Paper On Disk* Jan/Feb 1994, would be found at D:\ONDISK\94-DISK\94JANFEB\REMKEY*.*, where D is the drive letter of your CD drive.

You may copy files to your hard drive using Windows File Manager or the DOS copy command. In File Manager, highlight the files you just transferred and go to **File|Properties** to turn off the read-only attribute.

Some items, like the **PAL** software, are broken down into further subdirectories.

Shareware programs are provided for you to use on a trial basis. If you like a shareware program and decide to use it, you are required to pay the author of

the program a shareware fee. The specifics of each shareware agreement are included in each shareware program subdirectory.

BONUS CD: Project Gutenberg E-Text Files

We have included over 1,000 e-text files on the **Bonus CD**. These are public domain items (no copyright or copyright expired) such as *The Wizard of Oz*, and documents such as the NAFTA treaty.

These can be found in subdirectories of the Bonus CD. Each subdirectory has an index of contents that you can view in a word processor (*.txt) or web browser (*.htm) on your PC.

You can download files to your palmtop for viewing in Vertical Reader (on the Bonus CD), Memo, or other word processing program, or print them or read them on your PC.

NOTE: If you wish to view these files by double-clicking on them from Windows in File Manager, you may have to choose Associate under the File menu and change the program Windows uses for text (*.txt) files to Write or some other word processor. The default setting is Notepad, which is unable to handle files larger than approximately 50k.

Troubleshooting

Many minor problems can be easily fixed by closing unnecessary applications to allow HyperReader! more room to operate. Exiting and re-entering the program may also help in certain situations.

If you have changed configuration settings and are unable to reset them properly, simply reinstall the program, choosing the installation option to **Install All Files**. If this fails, delete the entire C:\PTPBASE directory and all of its contents from File Manager, and then reinstall.

Work-around if automated installation fails

1. Make a directory on your hard drive called PTPBASE, i.e., C:\PTPBASE.
2. In DOS, File Manager or Explorer, copy all files from the root directory of the CD into the newly created PTPBASE directory. There should be 27.
3. Run the file HRW.EXE from the PTPBASE directory. When the program runs, you will see a blank screen.
4. Click on the File menu. Choose Preferences., then Directories.
5. Change the first three directory options (Documents, Pictures and Text Files) to D:\CD (where D is the letter of your CD-ROM drive).
6. Change the fourth directory (Local Files) to C:\PTPBASE (or whatever drive and directory you used in Step 1 above).

7. Click on OK. Exit the program. Restart the program. It should now run normally.

**Blurred or distorted text on screen or [PREV] Icon doesn't work.
Redraw Screen**

Use alt-R to redraw the screen.

More Info

On-line Help is always available by clicking the **[Help]** icon or choosing one of the Help commands under the **Help** menu.

A link to **Boolean Search Instructions** can be found by clicking "Other" in the Main Table of Contents.

The fastest, most enjoyable way to become familiar and fluent with the **CD InfoBase** is to use it. Explore the Menu functions and the icons to see what functions are available and how they work. HyperReader! is a rich and powerful program that is both flexible and exceedingly user-friendly.

Enjoy!

The HP Palmtop Paper's ***1998 CD InfoBase*** ***2-CD Deluxe Edition***

- 42 issues of The HP Palmtop Paper and Bonus Issues in an easy-reading hypertext format (1991-97)
- HP 200LX User's Guide (for 100/200LX users)
- All the freeware and shareware from 39 issues of The HP Palmtop Paper On Disk and Bonus Issues plus all 5 PowerDisks (1991-97)
- Complete MicroREF DOS and 1-2-3 manuals
- HP 100/200LX Developer's Guide plus PAL & HP EXM Software
- Detailed Advertiser Information

PLUS: BONUS CD!

We also included over 1000 e-text books and documents ranging from Cicero's Orations to Clinton's inaugural address, from Black Beauty to Dracula. All ready for you to download to your Palmtop (read in Vertical Reader [VR100] or Memo) or PC and read or print.

Thaddeus Computing, 110 North Court, Fairfield, Iowa 52556
515-472-6330 800-373-6114 Fax: 515-472-1879