

# HP OpenView Switch/PAD Manager

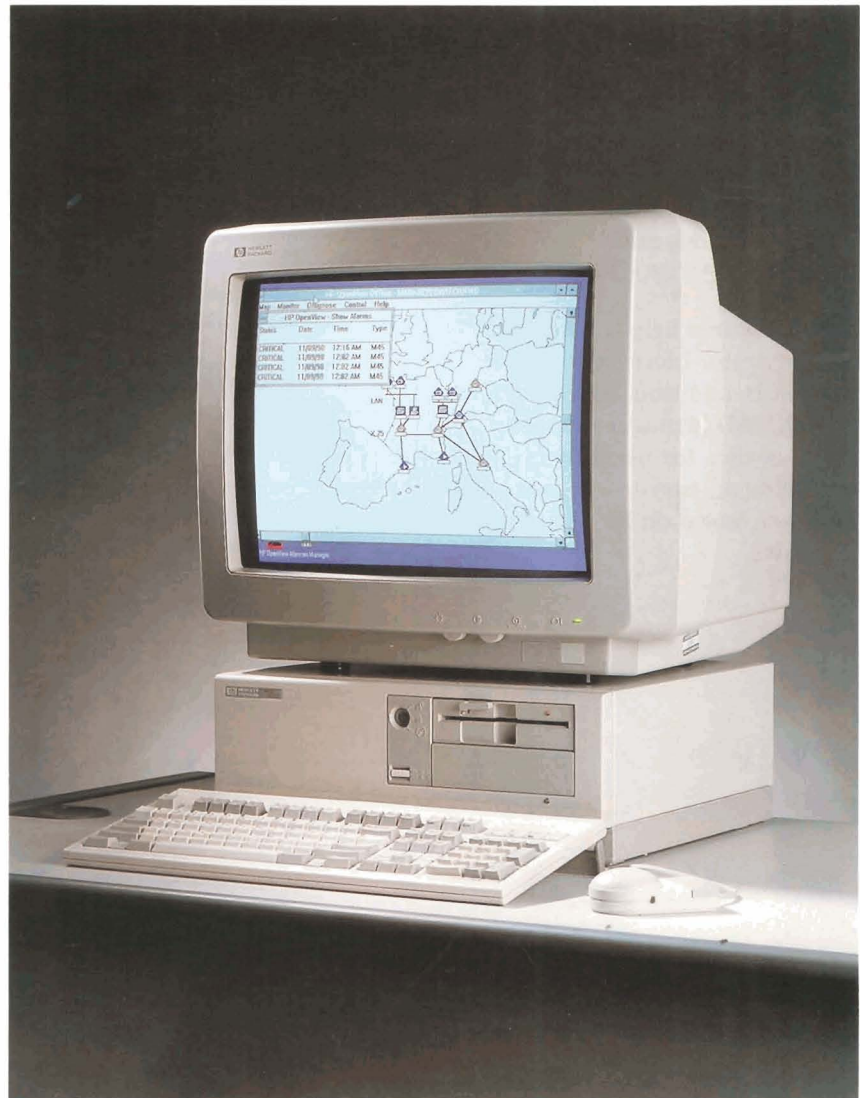
## Technical Data

**Product Numbers**  
**32054B # 104/204/205/206**  
**J2017A # 204/205/206**

The HP OpenView Switch/PAD Manager, based on the HP OpenView Windows Workstation, is a centralized network management tool for local and remote management of Model 45 switching nodes and/or HP 2334A/HP 2335A PADs.

### Features and Benefits

- **Central control and monitoring** of Model 45 switching nodes and HP 2334A/HP 2335A PADs to ensure low-cost and centralized operations.
- **User-friendly HP OpenView** graphical interface with color-coded alarms to easily configure and monitor the network.
- **Complete coexistence** with HP OpenView DTC Manager Release 6.0 to manage multiple devices from a single PC platform.
- **Real-time status monitoring** and logging of events allowing problem recognition and prevention.
- **Remote diagnostic capabilities** for quick and efficient problem solving.



**HP Computer Museum**  
**[www.hpmuseum.net](http://www.hpmuseum.net)**

**For research and education purposes only.**

## Functional Description

The HP OpenView Switch/PAD Manager is connected to the network via a local asynchronous connection to a Model 45 switching node or an HP 2334A/HP 2335A PAD. It can then be used to manage a network of up to 50 M45 switching nodes and/or up to 100 HP 2334A/HP 2335A PADs.

With the HP OpenView Switch/PAD Manager, based on the HP OpenView workstation, system managers or network administrators can centrally monitor the status of the entire network. In addition, the Switch/PAD Manager provides quick centralized access for the configuration and control of M45 switching nodes and HP 2334A/HP 2335A PADs.

These features help the network administrator increase network uptime. In addition, HP OpenView Switch/PAD Manager reduces learning time for users by providing an easy-to-use graphical interface based on HP OpenView Windows.

## Network Management Functions

The HP OpenView Switch/PAD Manager allows the network administrator to perform the following tasks:

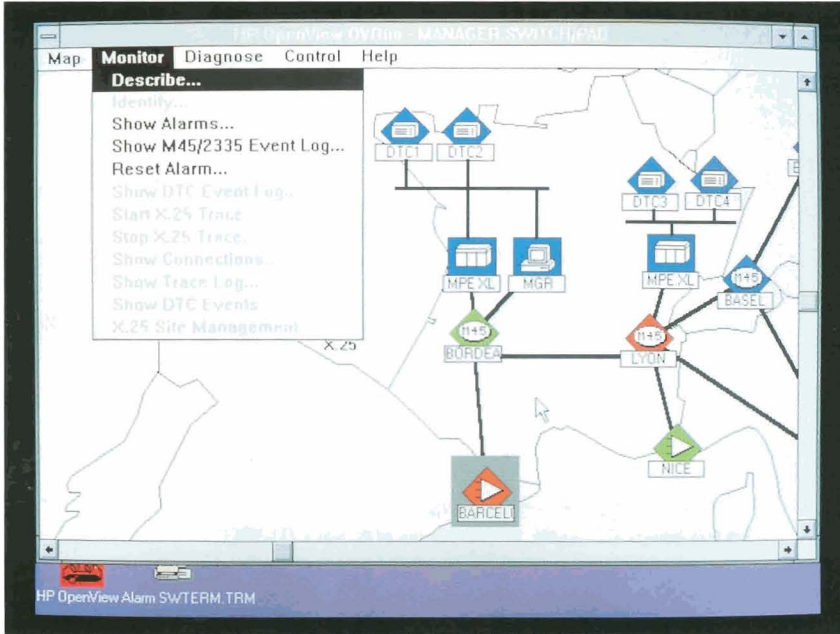
- **Network fault management:** real-time alarm detection on an HP OpenView map and event reporting to preset severity levels. Status of the Model 45 switching nodes and HP 2334A/HP 2335A PADs network is provided through a set of pre-defined standard HP OpenView icons. Four different colors are used to reflect the status of each component according to the level of alarm severity.

- **Network diagnostic capabilities:** once a problem has been detected on the map, the HP OpenView Switch/PAD Manager allows the network administrator to display the content of event logfiles. The search capabilities can then be used to view all the events relating to a particular device, or within a particular timeframe.
- **Network control functions:** the HP OpenView Switch/PAD Manager, using an automatic connection to any device on the network, provides access to the full management functionality of these devices. This includes configuring any X.25 device on the network and a first level of diagnostics.

Detailed Functions	Model 45 Switch	2334A/2335A PAD
ALARMS	Automatic alarms generation <ul style="list-style-type: none"> <li>• Link X.25 fail</li> <li>• Node restart</li> <li>• Alarm congestion</li> <li>• ...</li> </ul>	No alarm generation
MONITORING	Heartbeat from Model 45	Polling from Switch/PAD Manager PC
STATUS DISPLAY	Nodes displayed on the map Node color changes Color-coded event notification	
EVENTS	Event logfile displayed Event search capabilities On-line printing	
DEVICE ACCESS	Automatic logon to Model 45 and HP 2334A/2335A PAD Manual logon to any X.25 device	

## Network Operator Interface

The HP OpenView Switch/PAD Manager uses the standard HP OpenView user interface environment with a graphical network map, pull-down menu-based commands, standard dialog boxes and context-sensitive Online Help.



## Coexistence with HP OpenView DTC Manager 6.0

The integration of both HP OpenView DTC Manager and Switch/PAD Manager applications brings the following advantages to customers:

**# 1 Cut operation costs:** coexistence of management applications on the same platform under the HP OpenView umbrella drastically cuts the cost of required equipment and decreases operation overhead.

**# 2 One family of products integrated under HP OpenView:** whenever HP 3000/9000 users are managing their DTCs, and need switch or PAD equipment, they can buy it from HP instead of from another vendor, as HP provides you with a seamless integration of these devices under the same manager.

## Functional Specifications

### General Specifications

- HP Vectra QS/16S M46 running at 16 MHz (with 40 MB Hard Disc Drive and 5.25" Flexible Disc Drive)
- 2 MB additional memory
- VGA color monitor (board and monitor)
- ThinkJet printer + cable
- Dual serial card
- 3 serial cables
- HP mouse
- Security lock
- MS-DOS version 4.01 or later
- MS-Windows version 3.0 or later
- HP OpenView version A.04.00 or later
- Switch/PAD Manager software A.01.00 or later

### Environmental Conditions

- Operating temperature: 41 to 104°F (5 to 40°C)
- Non-operating temperature: -40 to 158°F (-20 to 70°C)
- Humidity: 15% to 80% (non condensing)
- Operating altitude: 15,000 ft. (4.6 km)
- Non-operating altitude: 50,000 ft. (15.2 km)

### Regulatory Compliance

- FCC Class B
- FTZ 1046/84 Level B
- SABS approval
- VCCI approval

### Safety Approvals

- UL listed
- CSA, TUV certified
- Nemko, FEI pending
- IEC 380/435 compliance

---

## Ordering Information

### Ordering the HP OpenView Workstation Hardware and Software.

32054B            HP OpenView Windows Workstation. The HP OpenView Windows Workstation is a specially configured HP Vectra, with PC software already installed.  
It includes 2 MB additional memory, ThinkJet printer cable, HP mouse, Security lock, MS-DOS version 4.01, MS-Windows version 3.0, HP OpenView version A.04.00.

Opt ABA → ABZ    (MUST ORDER) – Localisation options include: HP Vectra QS/16S M46 running at 16 MHz (with 40 MB Hard Disc Drive and 5.25" Flexible Disc Drive), VGA color monitor, ThinkJet printer.

Opt 104            (MUST ORDER) – Switch/PAD Manager connection (Dual serial card, 3 serial cables).

Opt 204 (\*)        Switch/PAD Manager software (media product).  
User License for 1 – 4 M45 Nodes  
or HP 2334A/2335A PADs network only.

or

Opt 205            Switch/PAD Manager software (media product).  
User License for 5 – 10 M45 Nodes.

or

Opt 206            Switch/PAD Manager software (media product).  
User License for over 10 M45 Nodes.

---

(\*) Only one of these software options may be ordered, depending on the size of Model 45 network.

---

*NOTE! If the Model 45 collecting node connected to the HP OpenView Switch/PAD Manager PC doesn't have a monitor J2007A (i.e. a terminal or a loopback connector), an additional dual serial link card 24541B needs to be ordered for the Model 45 switch.*

---



---

All brand and product names are trademarks or registered trademarks  
of their respective companies.

---

**Technical information in this  
document is subject to change  
without notice.**

**Copyright © 1991  
Hewlett-Packard Company**

**Printed in France - 01/91  
5954-7268 EN**

---