

HP OpenView Hub Manager

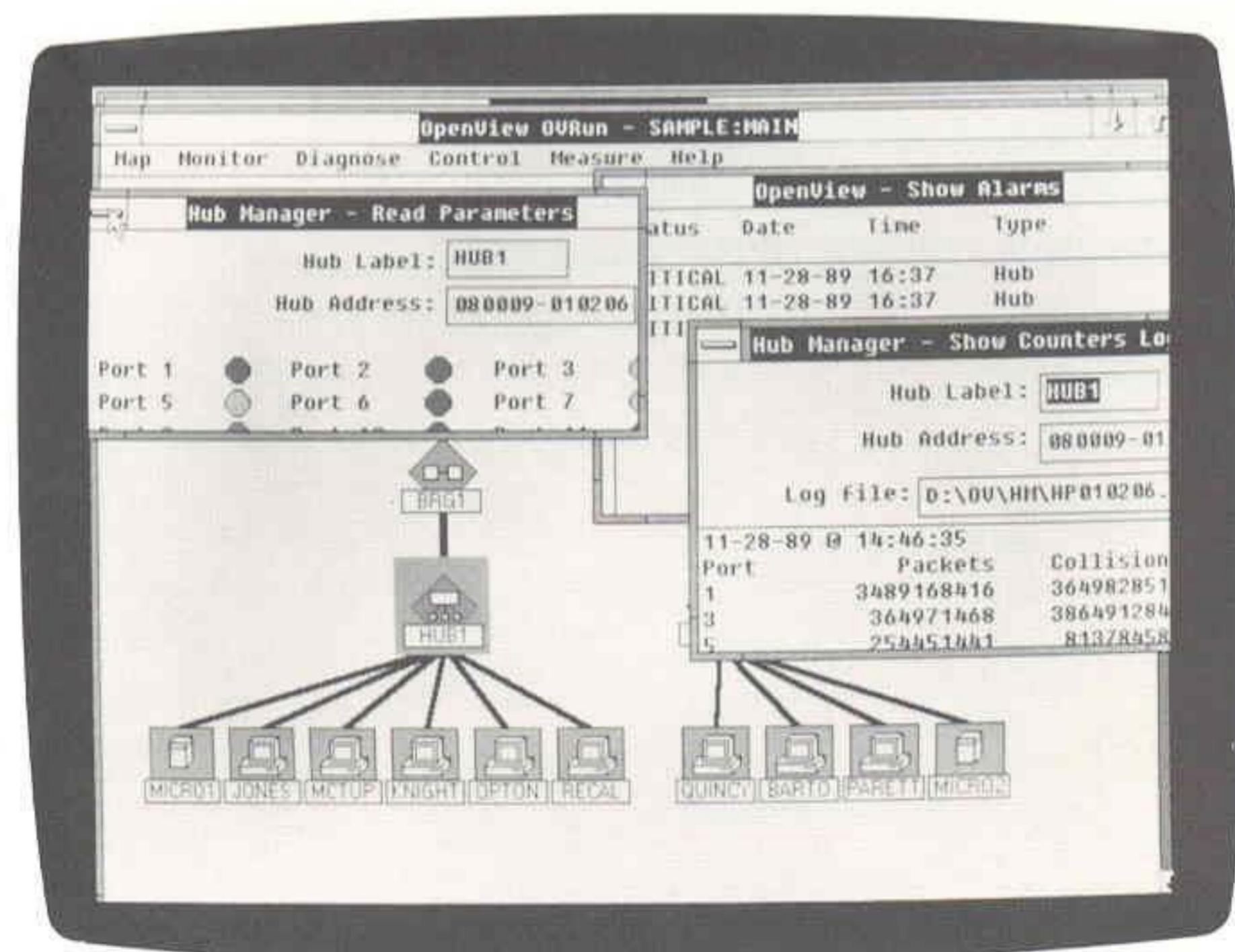
Product Number HP 28686A

In larger 10BASE-T networks where multiple hubs are required to support numerous end-nodes, managing the configuration and control of these hubs can require a great deal of costly administrative effort. As part of HP's comprehensive family of network management tools, the HP 28686A OpenView Hub Manager simplifies your network management task with a graphical Windows-based environment to centrally monitor and control the HP 28688A EtherTwist Hub Plus in a local or extended IEEE 802.3 or Ethernet environment. HP OpenView Hub Manager is a software package for DOS PCs that monitors network traffic conditions, helps identify and diagnose network problems, enhances network security, and increases network reliability by controlling hubs and individual links.

Features:

- Easy to use graphical interface with a "management at a glance" network map
- A single HP OpenView workstation configures and monitors all hubs within the extended LAN, simplifying the task of network management
- Identification, configuration verification and operational status monitoring of the HP EtherTwist Hub Plus
- Partitioning of ports to restrict access and isolate problems
- Upload and download feature to back up or duplicate hub configurations

10Base-T



- Collection and logging of network performance and fault data on individual ports and hubs
- Automatic notification of network alarm conditions
- Early detection of network problems, such as faults and traffic congestion
- Adjustable alarm thresholds on traffic and collision levels for ports and hubs
- Polling function that quickly locates hubs anywhere on the LAN
- Diagnostic tests and control of hubs including: link tests, reset and self-test
- Extensive help screens with easy to use keyword indexing

Makes Large, Complex, Twisted-Pair Networks Easy to Manage

Based on the Simple Network Management Protocol (SNMP), HP OpenView Hub Manager can manage all HP EtherTwist Hub Pluses in a local or extended LAN environment (An extended LAN is defined as a network connected by repeaters and bridges).

HP OpenView Hub Manager runs on a DOS PC. Using the network map feature, hubs can be easily labeled and identified. Pulldown menus allow quick access to a variety of hub management features, including configuration, monitoring, control, performance measurement, and problem identification.

Optimizes Your Network Performance

HP OpenView Hub Manager provides access to hub functions that allows each HP EtherTwist Hub Plus to be optimized for operation within a particular network environment. Hub functions that can be configured from the hub manager include: Enable/Disable of ports to restrict access to the LAN, and Enable/Disable of link integrity signal for hub connections to HP StarLAN 10 nodes that don't implement "link beat." Password access to each hub prevents unauthorized personnel from changing configuration parameters.

Information About The State of Your Network At Your Fingertips

Each hub port automatically collects a variety of information regarding the state of the hub and the nodes attached to it. Statistics gathered and logged on each port and hub include the number of packets transmitted and the number of collisions. This information can be retrieved from the hub upon request or automatically logged to a file at predetermined intervals to permit performance tracking.

Maximizes Network Reliability

The HP EtherTwist Hub Plus will automatically notify HP OpenView Hub Manager of error or alarm conditions on the network to alert the network operator. Alarms include segmentation of ports, loss of "link beat" signal, and excessive traffic and collisions. Thresholds may be set for traffic and collision alarm levels. Logging of network error conditions to a disk file is done automatically with the date and time of the event.

To help diagnose or correct network errors, HP OpenView Hub Manager can perform link tests to other network nodes, instruct the hub to perform a self-test, perform two levels of reset, and selectively enable or disable hub ports. This diagnostic capability allows the network administrator to pinpoint network segments and nodes under error conditions and to isolate problem network components.

HP Wire Test and Cabling

HP EtherTwist local area networks use twisted-pair cable. Two pairs of 22, 24, or 26 AWG unshielded twisted-pair cable are required for each connection. Shielded twisted-pair cable may also be used. HP WireTest Service is available to qualify cabling for a Type 10BASE-T network. Contact your local HP Sales and Support Center or HP Authorized LAN Dealer for information and availability of this service.

Product Requirements

HP OpenView Hub Manager requires a properly configured PC station consisting of the following hardware and software.

Hardware

A DOS PC platform that supports MicroSoft Windows (Intel 80286, 80386 or 80486 processor) with the following:

- 20-Mbyte or larger hard disk
- Expanded memory (2MB)
- Mouse
- EGA or VGA display
- One of the following HP network links: HP 27245A EtherTwist PC Link, HP 27246A Micro Channel Link, or HP ThinLAN Link.

The following personal computers have been tested and approved for use with HP OpenView Hub Manager:

- HP Vectras (ES/12, RS/20C, RS/25C)
- IBM (AT, PS/2 Models 30, 40, 50, 80)
- Compaq (286 and 386S).

Software

- MS-DOS 3.0 or later
- MicroSoft Windows Versions 2.1 and above (not including 3.X).
- HP OfficeShare Transport software B.00.00 (or later), included with HP network links (see hardware requirements above)

Installation Policy

HP OpenView Hub Manager is designed to be customer installable. Therefore, customers who would like to have Hub Manager installed by HP must contract this installation service from their local sales office or Authorized HP LAN dealer.



Technical information in this document
is subject to change without notice.

Copyright © 1990 Hewlett-Packard
Company

Printed in USA 1/90
5953-5047