

# HP NewWave

## Technical data

### What is HP NewWave?

HP NewWave is a personal computer software environment which works with Microsoft Windows/286 and MS-DOS.

HP NewWave makes it possible to use an industry-standard PC to

easily complete and automate tasks by integrating applications in a standard graphical environment.

HP NewWave's open architecture makes it possible to combine applications to build fully integrated networked solutions.

### Easy to use environment for integrating applications and automating tasks

### Benefits of HP NewWave

#### Easy to learn and easy to use

A consistent and predictable graphical user interface, computer-based training, and on-line help make HP NewWave truly easy to learn and use.

#### Integration

With its object management technology, HP NewWave allows users to link and combine information such as text, numerical data, and graphics from multiple applications.

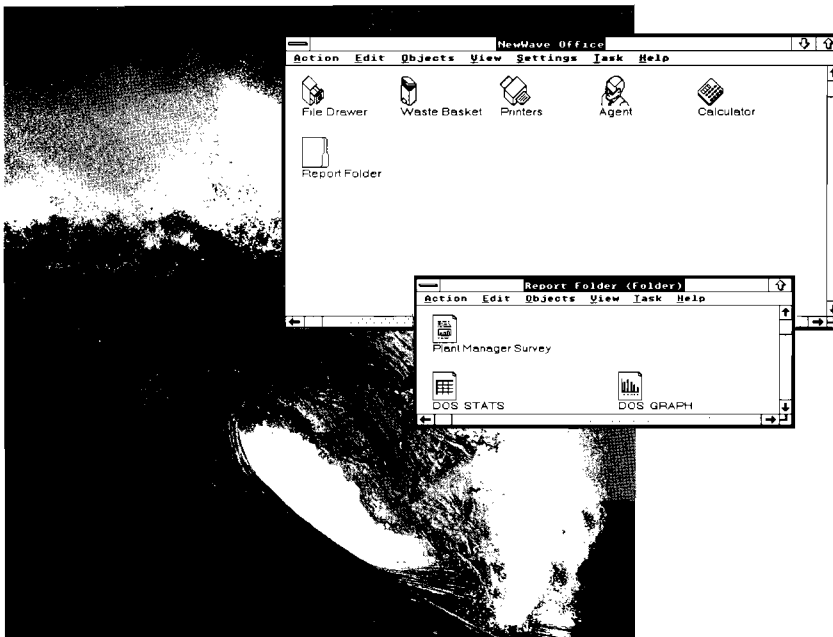
#### Task automation

With the HP NewWave Agent, HP NewWave can automatically record and perform any task such as the generation of standard monthly reports.

#### Protected investment

HP NewWave runs on industry-standard hardware and software. Users can continue to use MS-DOS and Microsoft Windows software in the HP NewWave environment. HP NewWave is a logical extension to the personal computer products used today.

Figure 1. The HP NewWave Office and an open folder.



**HP Computer Museum**  
**[www.hpmuseum.net](http://www.hpmuseum.net)**

**For research and education purposes only.**

**HP NewWave features**

**HP NewWave Office**

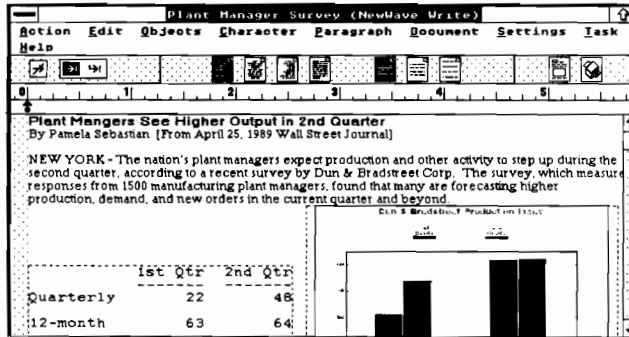
The NewWave Office window is the first thing a user sees when starting HP NewWave. It is modeled after a real office and contains a file drawer, waste basket, and other tools. It is the starting point for all tasks. Users can create, file, copy, delete, and rename objects from the NewWave Office window.

**Object Management Facility**

The Object Management Facility (OMF) is one of the key technology contributions of HP NewWave. The OMF performs these important services for the user:

- The OMF links data to applications to create an object. An object is data bound together with the application necessary to work with the data. In HP NewWave, these objects are represented as icons.
- The OMF makes it easy to create and revise objects in compound documents. If an object in a document, such as a spreadsheet, needs revision, the user can select the spreadsheet with a mouse and the OMF will automatically run the spreadsheet application and bring up the data file.
- The OMF allows a user to show the same information in multiple places on the personal computer.

**Figure 2. HP NewWave makes it easy to create and revise compound documents.**



**HP NewWave Agent**

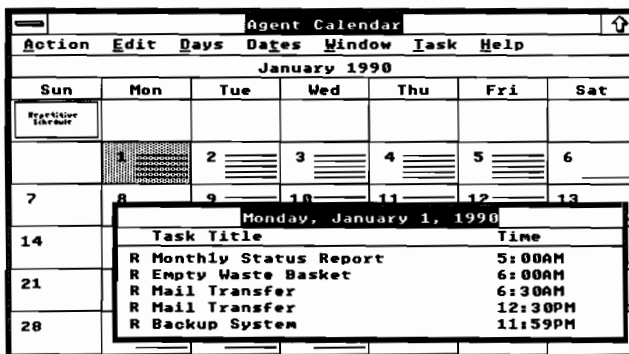
In the first release of HP NewWave, the Agent can automate Information Access and AdvanceLink tasks by executing command files which have been written for these products.

In the second release of HP NewWave, the Agent can record tasks in one or more applications for later playback. Playback can be triggered manually or can be scheduled to happen at any

time on any day, or even scheduled to happen repetitively.

Agent tasks can be edited. Most users will use only the record and playback functions of the HP NewWave Agent. However, MIS departments can use this sophisticated Agent facility and task language to create advanced Agent tasks which can be given to users and run on individual personal computers.

**Figure 3. The HP NewWave Agent calendar lets you schedule Agent tasks to be performed on any day and time.**



For example, an Agent task could start a database access application, download information from a remote source into a spreadsheet, generate a graph of the data, combine the graph with a document, and mail the document.

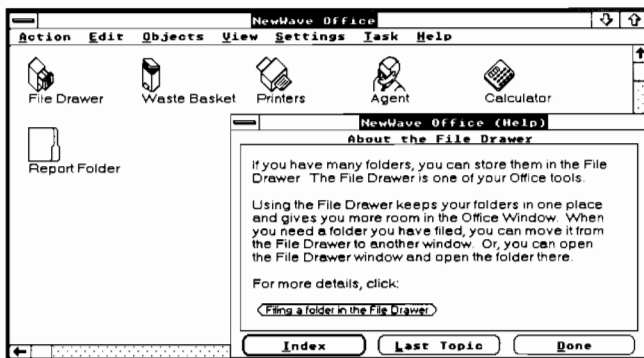
#### Text Note

Text Note is a simple text-only notepad utility. It includes cut, copy, paste, word wrap, insert/delete functions, and uses the ASCII file format. Text Notes can be mailed on HP DeskManager without need for file conversion.

#### Icon-level Encapsulation

Icon-level encapsulation gives customers even more of the advantages offered by HP NewWave. Unlike the DOS Programs Menu, new data files created by an Icon-level encapsulated application will appear as icons in the NewWave Office. Encapsulated objects can be filed, mailed, opened, copied, and deleted like other HP NewWave objects.

Figure 4. HP NewWave Help is available for all aspects of the system.



#### Help

A complete, on-line help facility is available for all aspects of the system including HP NewWave applications. In addition to the indexed list of help topics, a context sensitive, point-to-the-screen help mode is available at any time. The help messages are linked together so users can jump to related topics instantly. Users can move the help window while viewing their work.

#### Computer based training

Learning is enhanced through a fully interactive and animated computer based training facility. These training lessons are based on the actual HP NewWave software and are a complete substitute for classroom training.

#### Encapsulation

Through a process called encapsulation, HP NewWave customers can continue to use MS-DOS and Microsoft Windows software while taking advantage of many of the features of HP NewWave. Two levels of encapsulation are available: DOS Programs menu and Icon-level encapsulation.

#### DOS Programs menu

The DOS Programs menu gives customers access to their MS-DOS or Microsoft Windows applications through a list of application titles. These titles appear *without* icons in a menu called "DOS Programs" available directly from the NewWave Office. HP NewWave provides a pre-configured list of applications. Most users can easily add to the list by following the instructions and help provided in the environment.

HP NewWave includes a method to automatically encapsulate many popular software applications to this level. A Bridge Builder object allows users with knowledge of MS-DOS and Microsoft Windows to create their own Icon-level encapsulations.

### Applications make it happen

The HP NewWave environment is a powerful foundation for improved customer productivity, but the environment itself does not give customers the tools they need. Application software is the key to bringing the HP NewWave system together.

Just as Microsoft Windows requires applications to be useful, HP NewWave requires applications to make it complete. Rather than taking a proprietary approach, HP has responded to customer needs by preserving the value of the vast library of MS-DOS and Microsoft Windows applications. Encapsulation allows customers to continue to use existing software while taking advantage of many of the features of HP NewWave.

While encapsulation protects customers' current software investment, the full power of HP NewWave is realized with HP NewWave aware applications. HP has written two HP NewWave applications: HP NewWave Write and HP NewWave Mail. HP NewWave Write is included with the HP NewWave environment.

### HP NewWave Write

HP NewWave Write is a WYSIWYG word processor that is fully integrated with the HP NewWave environment.

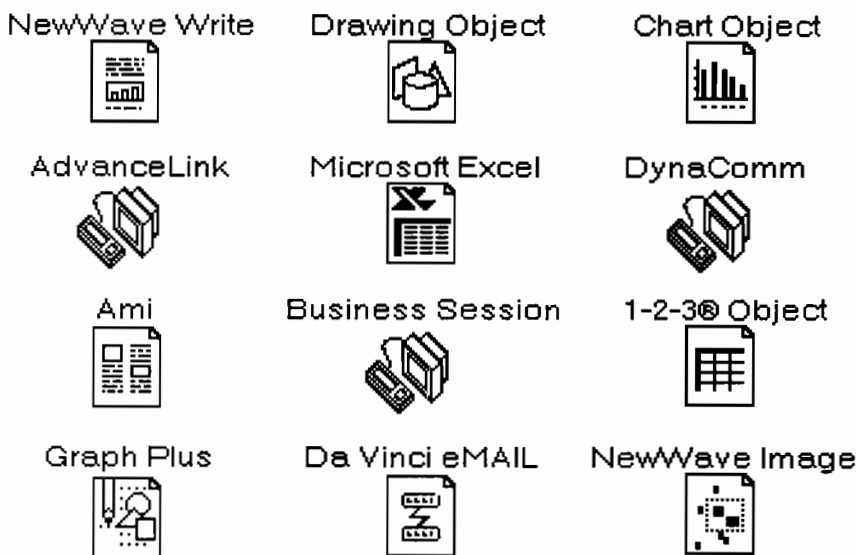
HP NewWave Write offers many advanced features including full object integration, a spelling checker, auto-pagination, page preview, autosave, and ASCII, Executive MemoMaker, and DCA conversion.

### HP NewWave Mail

HP NewWave Mail is available separately for customers who want to link HP NewWave with HP DeskManager.

Most HP NewWave applications will be developed by independent software developers. HP offers an HP NewWave Developer Kit that provides the tools necessary to develop HP NewWave applications.

Figure 5. Tailor the environment with your choice of applications. Here are some examples.



## Minimum system requirements

The following personal computer configuration is required to run HP NewWave:

- HP, IBM and Compaq 80286- or 80386-based PC or 100% compatible
- 80286-based PC: 640K base memory (256K base + 384K backfill), 3 Mb of LIM 4.0 EMS memory, LIM 4.0 EMS Memory Card which provides backfilling
- 80386-based PC: 4 Mb total memory, XMS compatible LIM 4.0 EMS memory manager
- 1.2 Mb 5¼-inch disk drive or 720K 3½-inch disk drive
- 40 Mb hard disk
- EGA or VGA monitor and card
- Microsoft Windows supported mouse
- MS-DOS 3.2 or higher
- Microsoft Windows/286 2.11



HP NewWave supports all the peripherals that are supported by MS Windows/286 2.11

## Ordering information

Product	Product Number
HP NewWave	D1704A
- 3½ inch, Dpt. AAB	
- 5¼ inch, Dpt. AA9	
HP NewWave Technical Reference Set	D1730A
HP NewWave Support Pack (Europe only)	D1705A
HP NewWave Developer Kit	D1714A
HP NewWave Developer Assist Service	D1728A
HP NewWave Developer Premier Assist Service	D1729A

For more information, call your local HP sales office listed in your telephone directory or an HP regional office listed below for the location of your nearest sales office.

**United States:**

Hewlett-Packard Company  
4 Choke Cherry Road  
Rockville, MD 20850  
(301) 670-4300

Hewlett-Packard Company  
5201 Tollview Drive  
Rolling Meadows, IL 60008  
(312) 255-9800

Hewlett-Packard Company  
5161 Lankershim Blvd.  
No. Hollywood, CA 91601  
(818) 505-5600

Hewlett-Packard Company  
2015 South Park Place  
Atlanta, GA 30339  
(404) 955-1500

**Canada:**

Hewlett-Packard Ltd.  
6877 Goreway Drive  
Mississauga, Ontario L4V1M8  
(416) 678-9430

**Japan:**

Yokogawa-Hewlett-Packard Ltd.  
15-7, Nishi Shinjuku 4-Chome  
Shinjuku-ku, Tokyo 160  
(03) 5371 1351

**Latin America:**

Hewlett-Packard  
Latin American Region Headquarters  
Monte Pelvoux No. 111  
Lomas de Chapultepec  
11000 Mexico, D.F. Mexico  
(525) 202-0155

**Australia/New Zealand:**

Hewlett-Packard Australia Ltd.  
31-41 Joseph Street  
Blackburn, Victoria 3130  
Melbourne, Australia  
(03) 895 2895

**Far East:**

Hewlett-Packard Asia Ltd.  
22/F Bond Centre  
West Tower  
89 Queensway  
Central, Hong Kong  
(5) 8487777

In Europe, please call your local HP sales office or representative:

**Austria, COMECON-countries and Yugoslavia:**

(0222) 2500 0

**Belgium and Luxembourg:**

(02) 761 34 11

**Denmark:**

(02) 81 66 40

**Finland:**

(0) 88 721

**France:**

(1) 60 77 42 52

**Germany:**

(06172) 16 0

**Greece:**

(01) 68 28 11

**Iceland:**

(01) 671 000

**Ireland:**

(01) 88 33 99

**Italy:**

(02) 92 36 91

**Netherlands:**

(020) 547 6669

**Norway:**

(02) 24 60 90

**Spain:**

900 123 123

**Sweden:**

(08) 750 20 00

**Switzerland:**

(057) 31 21 11 (Head Office)  
(022) 780 41 11 (Suisse Romande)  
(046) 05 15 05 (Customer  
Information Center)

**UK:**

(0734) 777 828

**Middle East and Africa:**

Geneva, Switzerland  
41/22 780 7111

**European Headquarters:**

Hewlett-Packard S.A.  
150, Route du Nant d'Avril  
1217 Meyrin 2  
Geneva, Switzerland  
41/22 780 8111

Technical information in this document is subject to change without notice.

**© Copyright**

**Hewlett-Packard Company 1990**  
All Rights Reserved. Reproduction, adaptation, or translation without prior written permission is prohibited except as allowed under the copyright laws.

Microsoft, MS-DOS, and Windows are U.S. registered trademarks of Microsoft Corporation.

Printed in USA M0190  
5952-1565