

Installing Your Series 300 Workstation Hardware

Your Workstation's Configuration

Your Series 300 Workstation hardware includes a:

- System Processing Unit (SPU) with keyboard
- Monitor
- Keyboard and mouse
- HP 7958S or HP 7959S Disk Drive with software already loaded, including:
 - HP-UX 6.5 Operating System.
 - HP 98887A X Windows environment to get you started with your workstation.

CAUTION

Your disk drive already has HP-UX loaded. Do not initialize your disk.

You'll find your workstation's *Computer Information* sheet packaged with your SPU. It has useful information for your records. Please read it soon and follow its instructions.

Installation Procedures

These hardware installation picture guides will help you properly install your workstation hardware. Three picture guide sections (listed below) sequentially show you how to install your workstation.

1. Install your computer

Refer to the installation picture guide titled *Follow these steps to install your workstation*. You'll find it in your SPU box. You should use it to install your:

- System Processing Unit (SPU)
- Keyboard
- Monitor

2. Install your mouse and disk drive

Refer to the attached installation picture guide, the section titled *Follow these steps to install your disk drive* to install your:

- HP Mouse
- Disk drive

Do not initialize your disk drive. HP-UX has been loaded onto your disk.

3. Boot HP-UX and login

CAUTION

Do not initialize your disk drive. HP-UX has been loaded onto your disk.

Refer to the last installation picture guide section titled *Follow these steps to boot HP-UX and use X Windows environment* to:

- Automatically boot HP-UX.
- Automatically load your X Windows environment to login.
- Login and use your X Windows environment to learn about your workstation.

If you're not familiar with the X Windows environment, you may want to refer to *A Beginner's Guide to the X Window System*.

LAN Connections

If you'll be connecting your workstation to a LAN (Local Area Network), contact your System Administrator. Your system (includes your workstation and others) may need to be shut down while connecting your workstation to the LAN.

You should refer to the *LAN Installation Manual* for instructions.

Backing Up Your Disk

Your workstation does not include a separate media with HP-UX and X Windows. After you have installed your workstation hardware, checked its operation and connected it to a LAN, you should contact your System Administrator regarding backing up your new disk drive.

Installing Other Peripherals

Refer to your *Series 300 Installation Reference* or *Peripheral Installation Guide* to install other peripherals.

Follow these steps to install your disk drive:

1

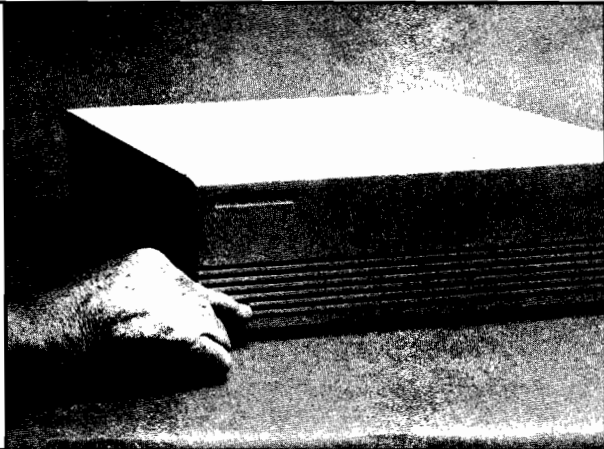
First, refer to your workstation's picture guide and install your:

- SPU
- Keyboard
- Monitor



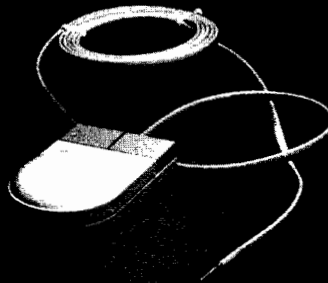
2

Turn OFF your SPU.



3

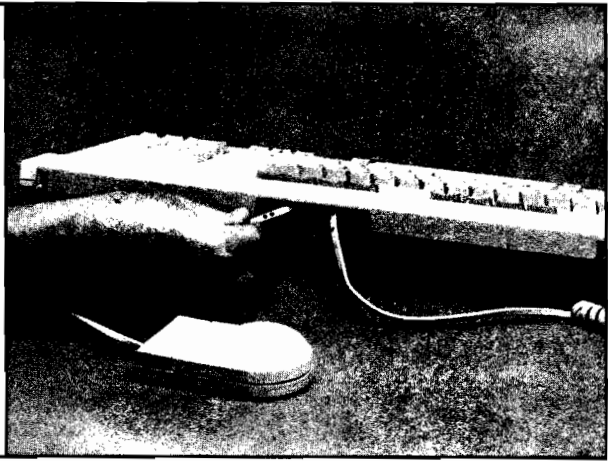
Find your mouse.



If you have any problems or questions, refer to your *Disk Drive* manual.

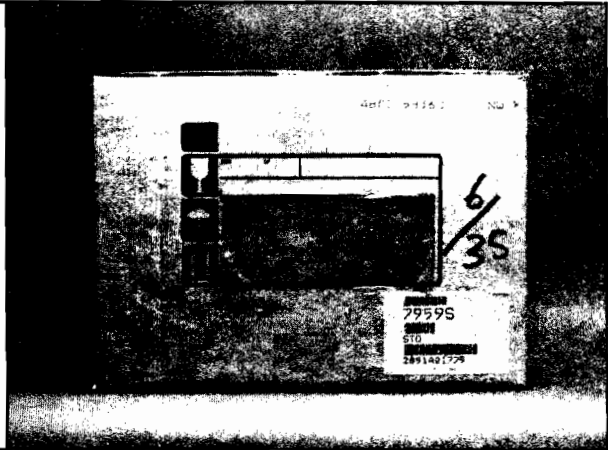
4

Connect the mouse to your keyboard.



5

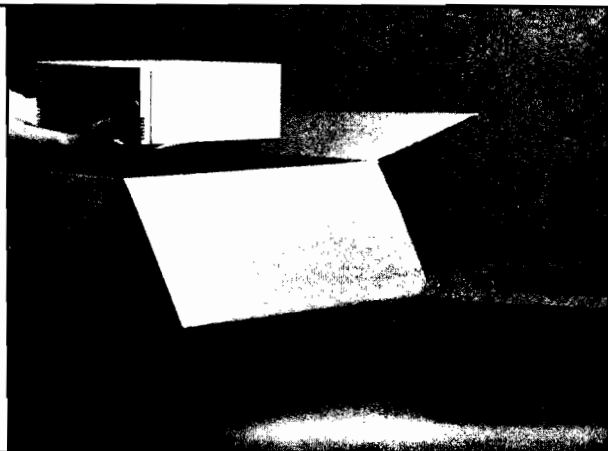
Find your disc drive.



6

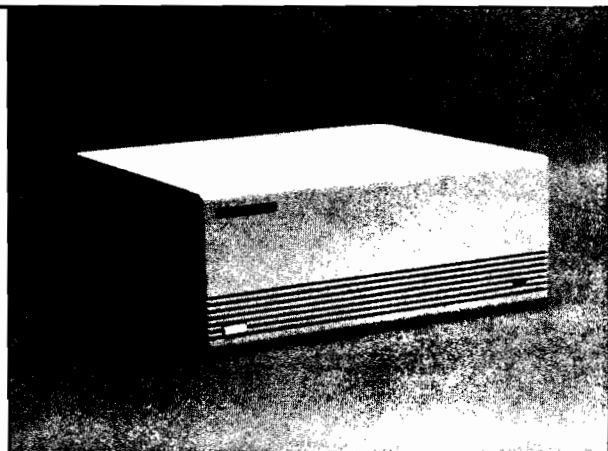
Unpack your disc drive.

Caution: Do not initialize your disk.
Your disk has HP-UX installed.



7

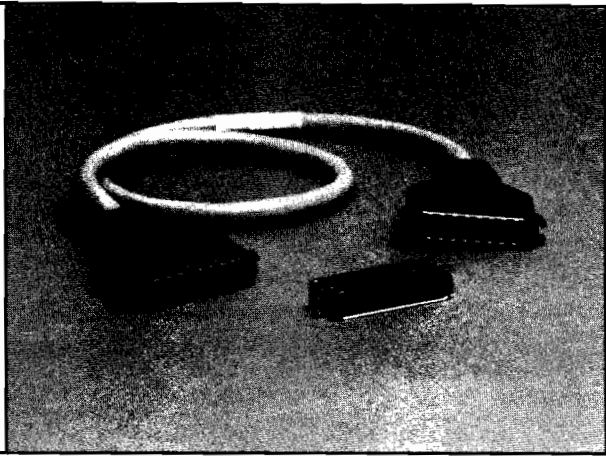
Place your disc drive where it will be used.



If you have any problems or questions, refer to your *Disk Drive* manual.

8

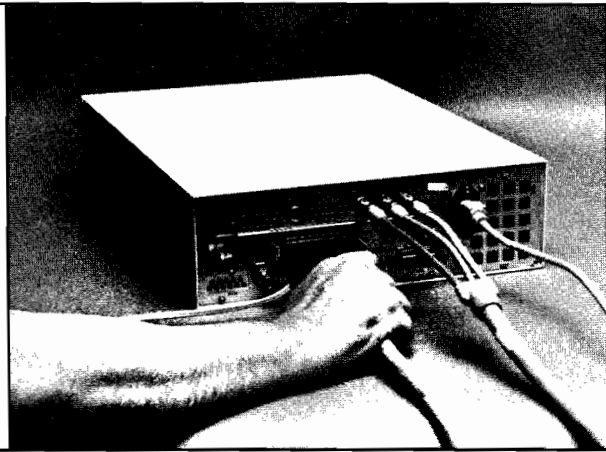
Find your SCSI interface cable and SCSI terminator.



9

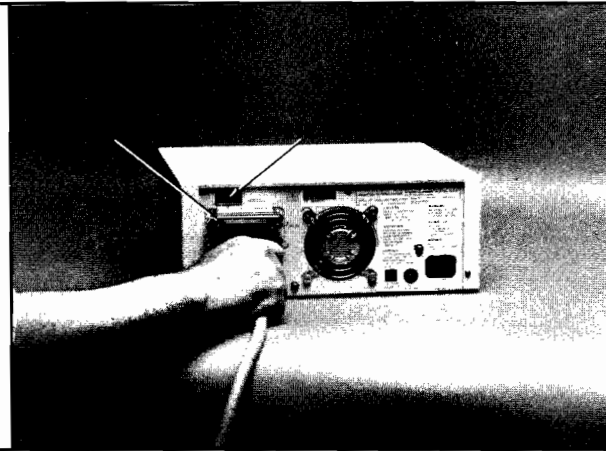
For a Model 340 workstation, connect the SCSI cable's other end to your SPU's SCSI connector.

If you have a Model 360 or 370 workstation, the SCSI cable has been connected to the SPU.



10

Attach the cable to one of your disk drive's SCSI connectors and put the terminator on the other one.



11

Find your disk drive power cord.



If you have any problems or questions, refer to your *Disk Drive* manual.

12

Compare your disk drive's voltage range to your SPU's voltage range. If they are not the same, contact your local Hewlett-Packard office.

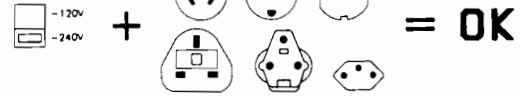
5

Compare the voltage setting to the power cord.

120V

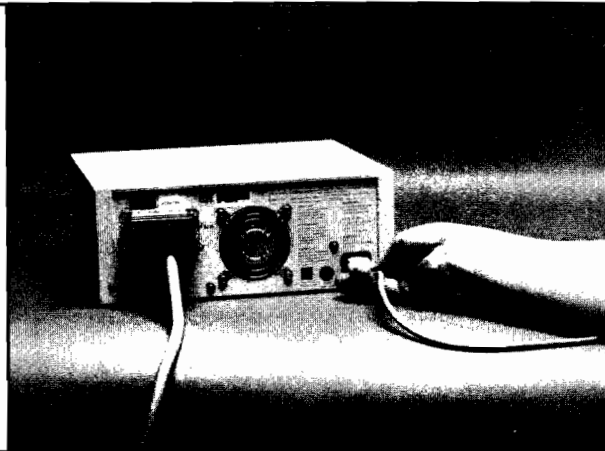


240V



13

Connect power to your disk drive.

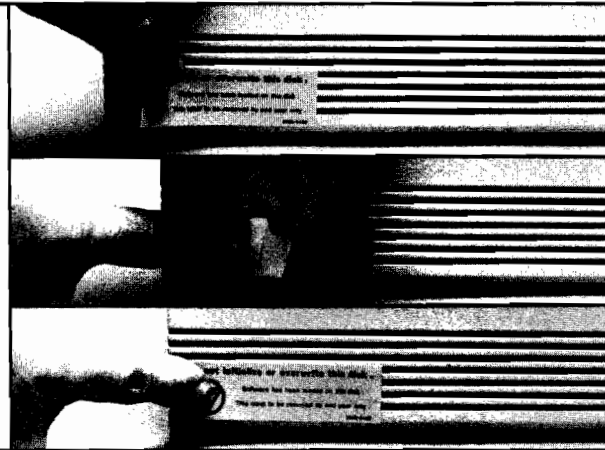


14

Peel back the overwrite caution label, then turn ON your disk drive.

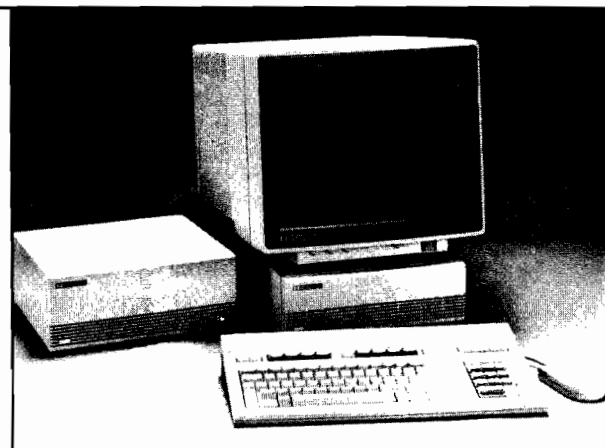
Then restick the overwrite label.

Caution: Do not initialize your disk.
Your disk already has HP-UX installed.



15

Go on to the next section entitled, *Follow these steps to boot HP-UX and use the X Windows environment.*



If you have any problems or questions, refer to your *Disk Drive* manual.

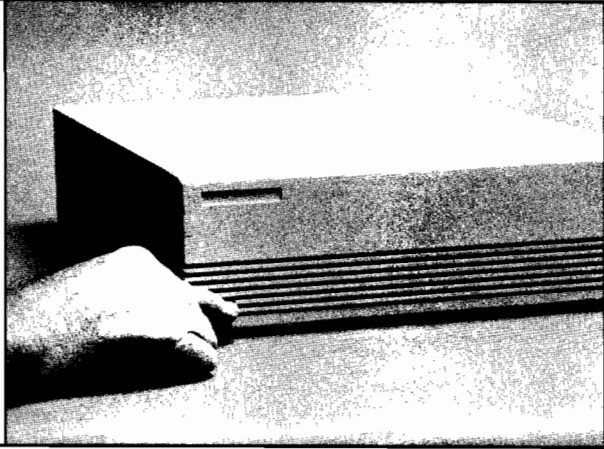
Follow these steps to boot HP-UX and use the X Windows environment:

1

Verify your monitor has been turned on.

Step 2's disk drive displayed information will appear momentarily after you turn on your SPU, then your SPU will boot HP-UX in about four minutes.

Watch the screen and turn ON your SPU.



2

Note that your disk drive's product number (HP 7958 or HP 7959) and its HP-UX operating systems are displayed.

For example:

```
:HP7959, 1400,0,0
```

```
1H SYSHPUX
```

```
1D SYSDEBUG
```

```
1B SYSBACKUP
```

Otherwise, turn OFF your SPU and check your disk drive installation.

```
Copyright 1988,  
Hewlett-Packard Company  
All Rights Reserved  
HP7959, 1400.0.0  
1H SYSHPUX  
1D SYSDEBUG  
1B SYSBACKUP  
BOOTROM Rev C1  
Bit Mapped Display  
MC68030 Processor  
MC68882 Coprocessor  
Keyboard  
HP-IB  
DMA-CO  
RAM 8388384 Bytes  
HP98644 (RS-232) at 9  
HP98625 (HPiB) at 14  
HP98643 (LAN) at 21 080009017BD4
```

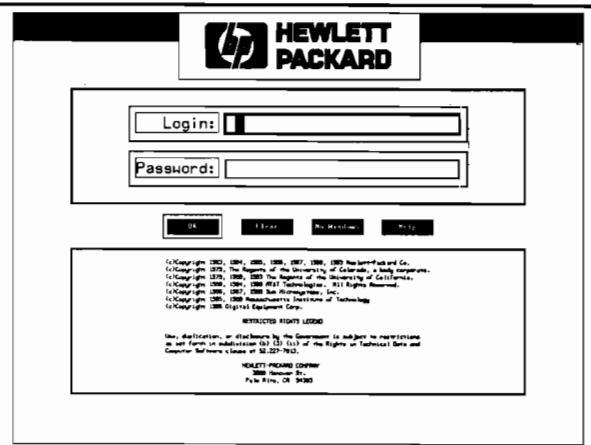
```
SEARCHING FOR A SYSTEM (RETURN To Pause)  
RESET To Power-Up
```

1H

3

When this login screen appears, HP-UX has booted and you need to log in. If it does not appear, check your installation, or contact your Hewlett-Packard representative.

If your System Administrator will provide your login, contact him for procedures. Skip to Step 5. Otherwise, go on to Step 4.



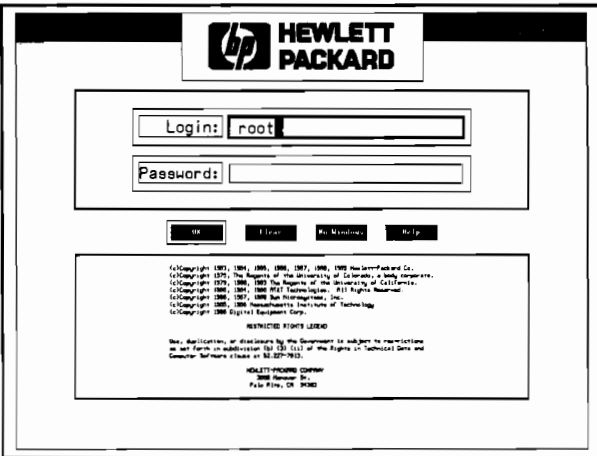
Refer to *A Beginner's Guide to the X Window System* manual.

4

Type:

root Return

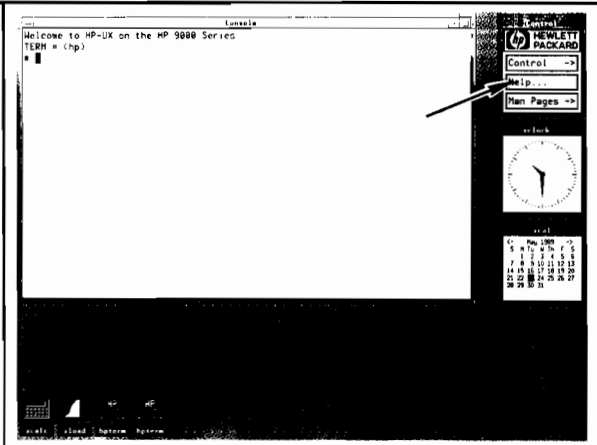
Your X windows environment will automatically load and run. This takes about one minute.



5

When this screen appears, your X Windows environment has started.

Move the pointer to the screen's upper right-hand corner in the control panel onto **HELP**.

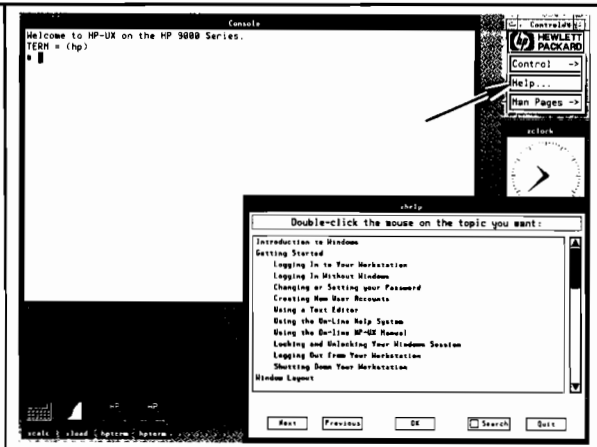


6

With the pointer on **HELP**, click the left mouse key and this Help Index should appear in a few seconds.

When you put your pointer on a screen button, then click your left mouse key, you have 'clicked on a screen button.'

Note: You should use the left mouse key for all clicking operations given in this guide.



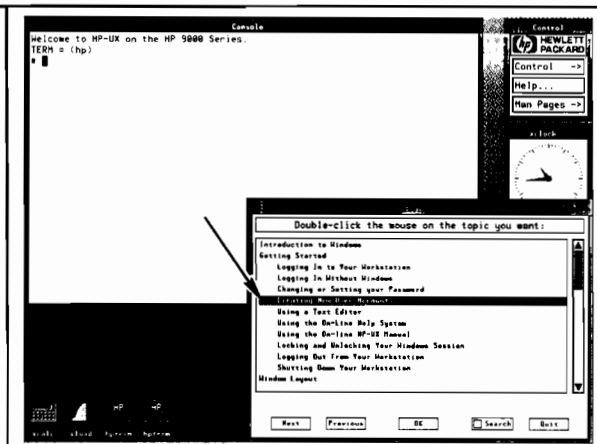
7

Creating Accounts

Move your pointer onto:

Creating New User Accounts

then click your left mouse key twice.



Refer to *A Beginner's Guide to the X Window System* manual.

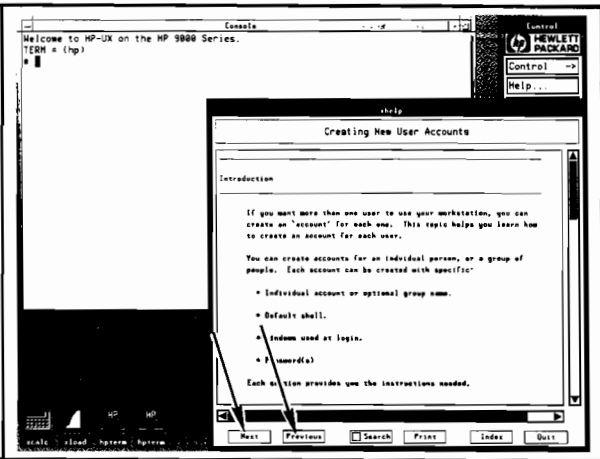
8

This Help Topic

Creating New User Accounts

should appear in a new window like this picture.

Click on the **NEXT** and/or **PREVIOUS** screen buttons to scroll through the information.

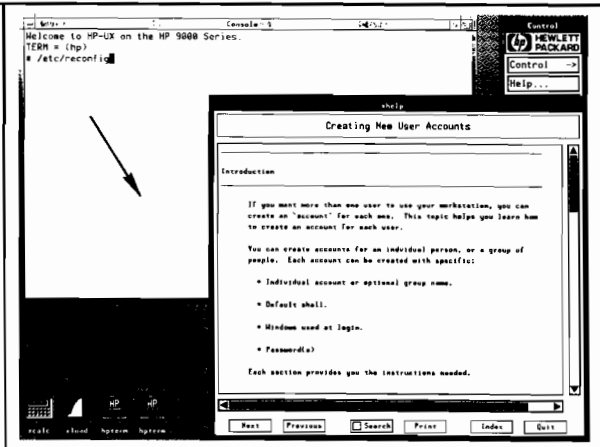


9

Move your pointer onto the hterm window where the commands must be entered.

Follow the **Creating New User Account** instructions to create your new account.

If you need to see all of, or 'raise' any window, move the pointer onto the window's title bar or border and click the left mouse key.

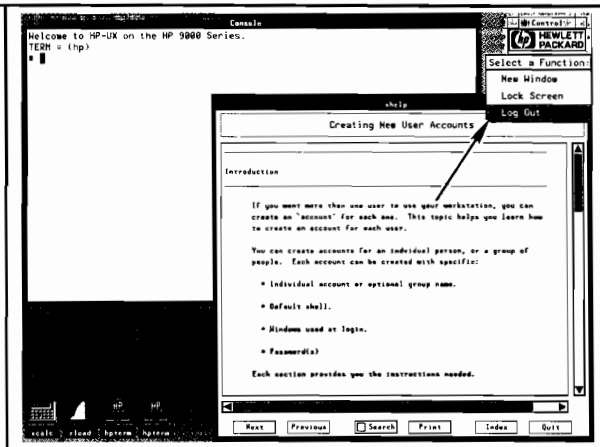


10

After you create your new accounts, log out by:

- Moving the pointer onto the **CONTROL** button.
- Pressing and holding the left mouse key then 'drag' the pointer down to **LogOut**.
- Releasing the mouse key.

Click on **Yes, Log Out** in the prompt.

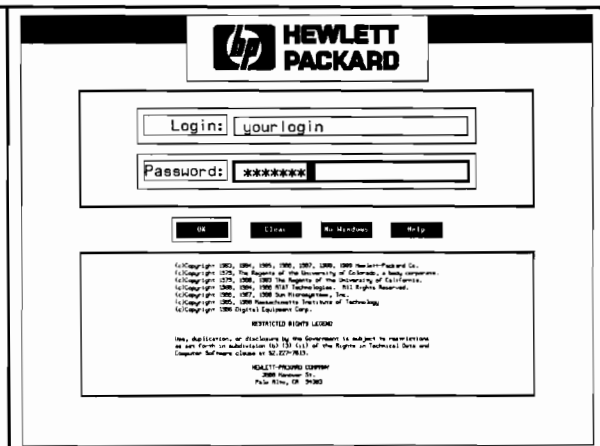


11

Type your new login and password.

Contact your System Administrator to customize your HP-UX operating system. You may need to refer to the *HP-UX System Administrator Manual*, Chapter 4.

For example, a good security measure would be to create a password for root.



Refer to *A Beginner's Guide to the X Window System* manual.

HP Computer Museum
www.hpmuseum.net

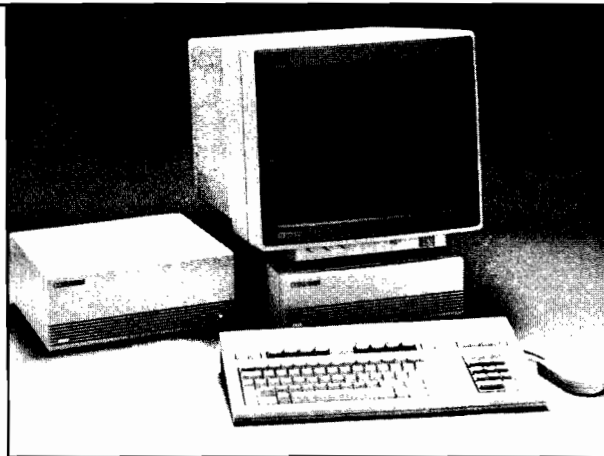
For research and education purposes only.

12

If your workstation won't be connected to a LAN, its installation has been completed. To connect to a LAN, contact your System Administrator or refer to the manual titled, *LAN Installation Manual*.

Contact your System Administrator regarding disk drive back up.

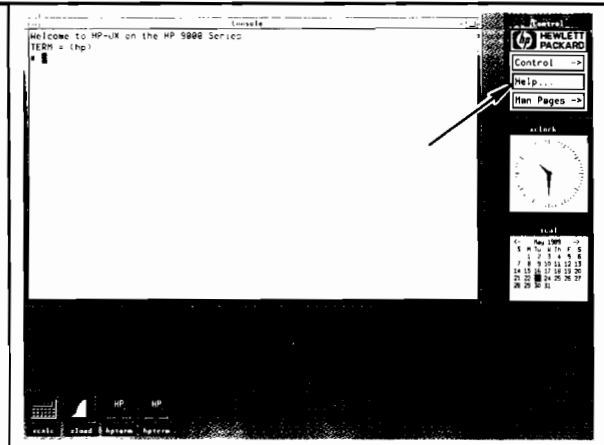
To correctly shut down your workstation, go on to Step 13.



13 Shutting Down

When you need to shut down your workstation, certain procedures should be done to maintain your file system. You should review the shut down steps before you actually shut down your workstation.

To read the help files and learn how to correctly shut down your workstation, first click your mouse on **Help**.

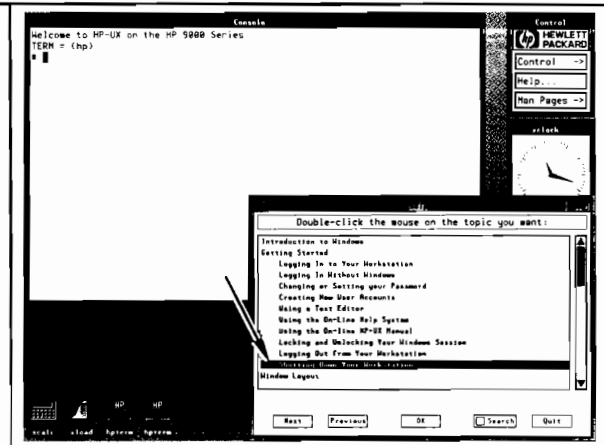


14

You should see this Help Index.

Move your pointer onto:

Shutting Down Your Workstation
and click your left mouse key twice.

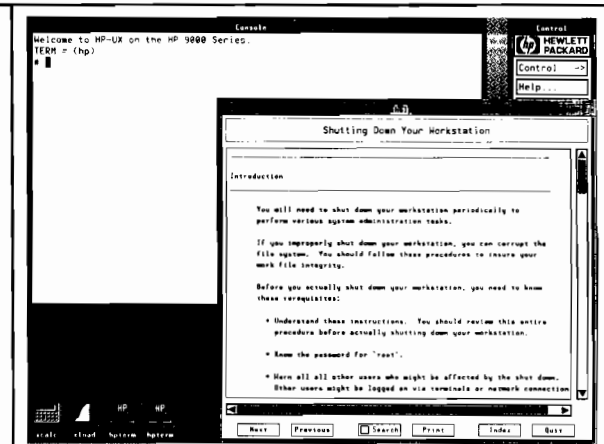


15

You should read and understand the instructions before you actually shut down your workstation.

Follow your

Shutting Down Your Workstation
help screen's steps to shut down your workstation.

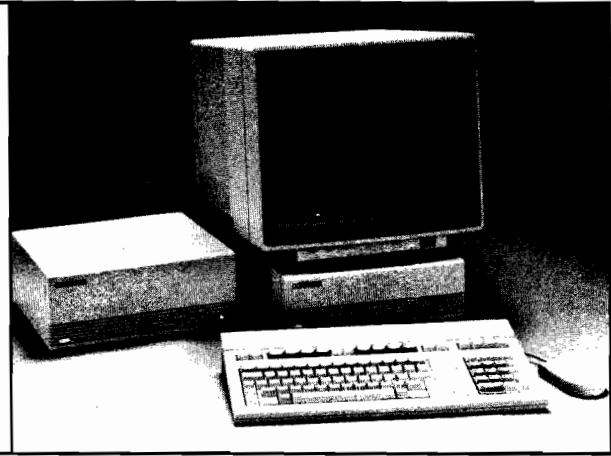


Refer to *A Beginner's Guide to the X Window System* manual.

16

After you have correctly shut down your workstation, your X Windows environment should be ready in about three minutes after you turn it on.

You should read all help topics and learn their applications.

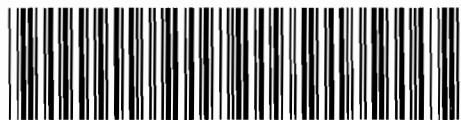


Refer to *A Beginner's Guide to the X Window System* manual.

Hewlett-Packard Company • 3404 East Harmony Road • Fort Collins, Colorado 80525

HP Part Number
98579-90602

Microfiche No. 98579-99602
Printed in U.S.A. E0889



98579-90602