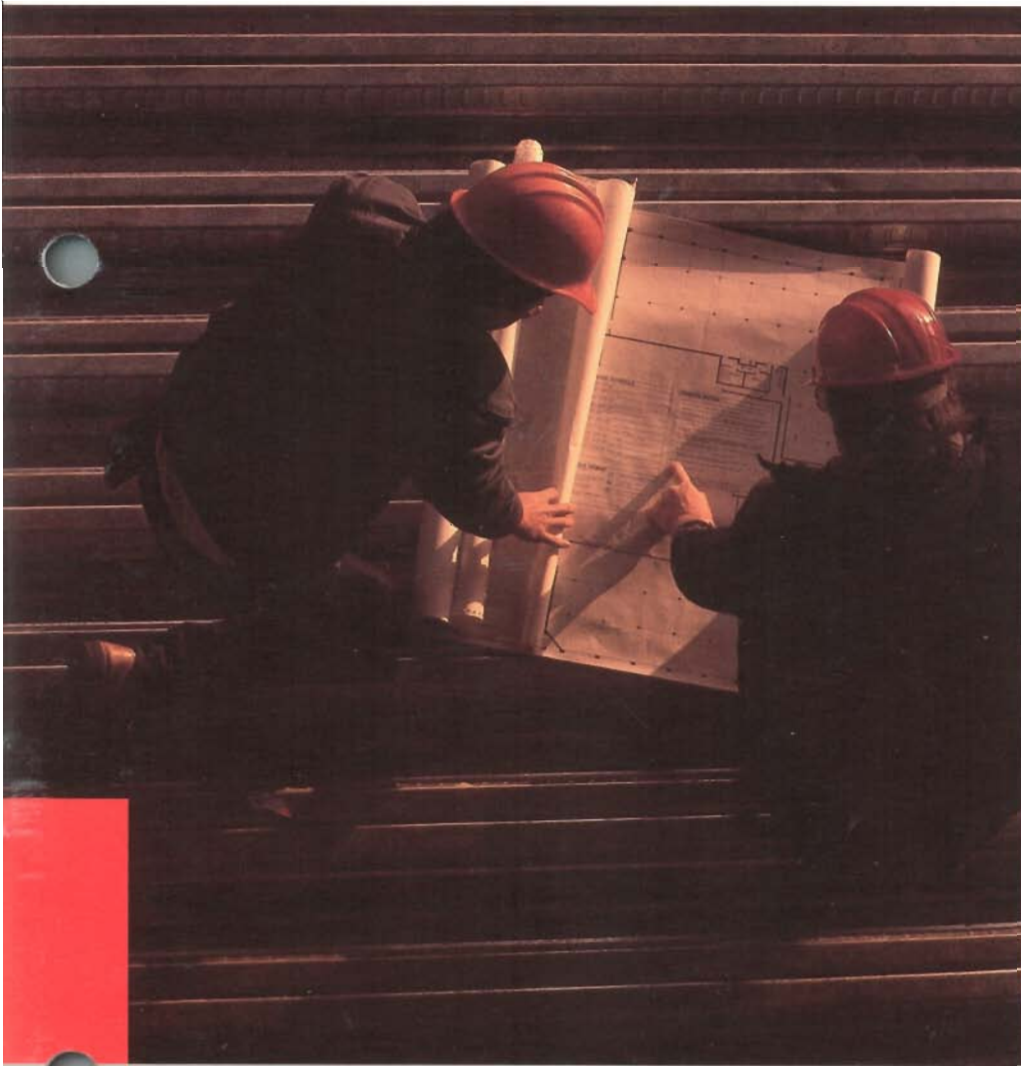


Taking Ideas from Concept to Completion.



**Hewlett-Packard
CAD Peripherals
Summer 1990**

Built for results.

In the CAD environment, output is the visible result of your time and effort. And whether you're using that output to create a circuit board, build a skyscraper, or sell product designs to a client, it should show your work to its best advantage. That's where Hewlett-Packard fits in, with high-quality CAD peripherals. Products engineered so well, you can count on the results.

We invite you to look over our CAD peripherals. Compare the features, output, and specifications of our electrostatic plotters, pen plotters, and color graphics printers. We offer a choice of technologies and features designed to meet your needs.

You'll see that each technology offers unique advantages. High throughput gives our monochrome and color electrostatic plotters an edge in demanding high-volume environments. Affordability makes pen plotters an excellent choice as workstation and personal PC CAD peripherals. Thermal-inkjet technology gives HP PaintJet Series printers an extensive color palette, perfect for complex graphics. And for CAD input, count on the HP SketchPro graphics tablet as an efficient, reliable addition to your system.

Backed by Hewlett-Packard.

That means a commitment to quality, reliability, service, and support. The commitment began with the company, over 50 years ago. Today it backs every one of our CAD peripherals.

We design and build reliability into all of our peripherals. Rigorous testing ensures products perform as specified under your most demanding conditions. Extensive testing also means low maintenance costs and products you can trust.

Rely on our service and support.

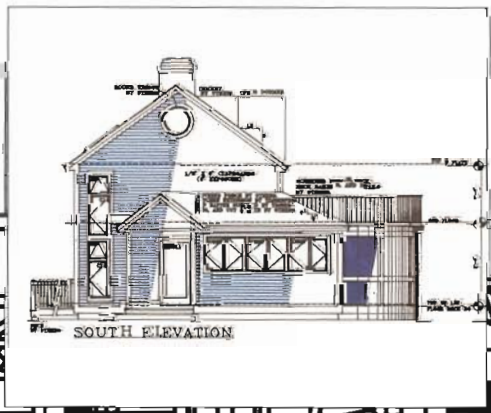
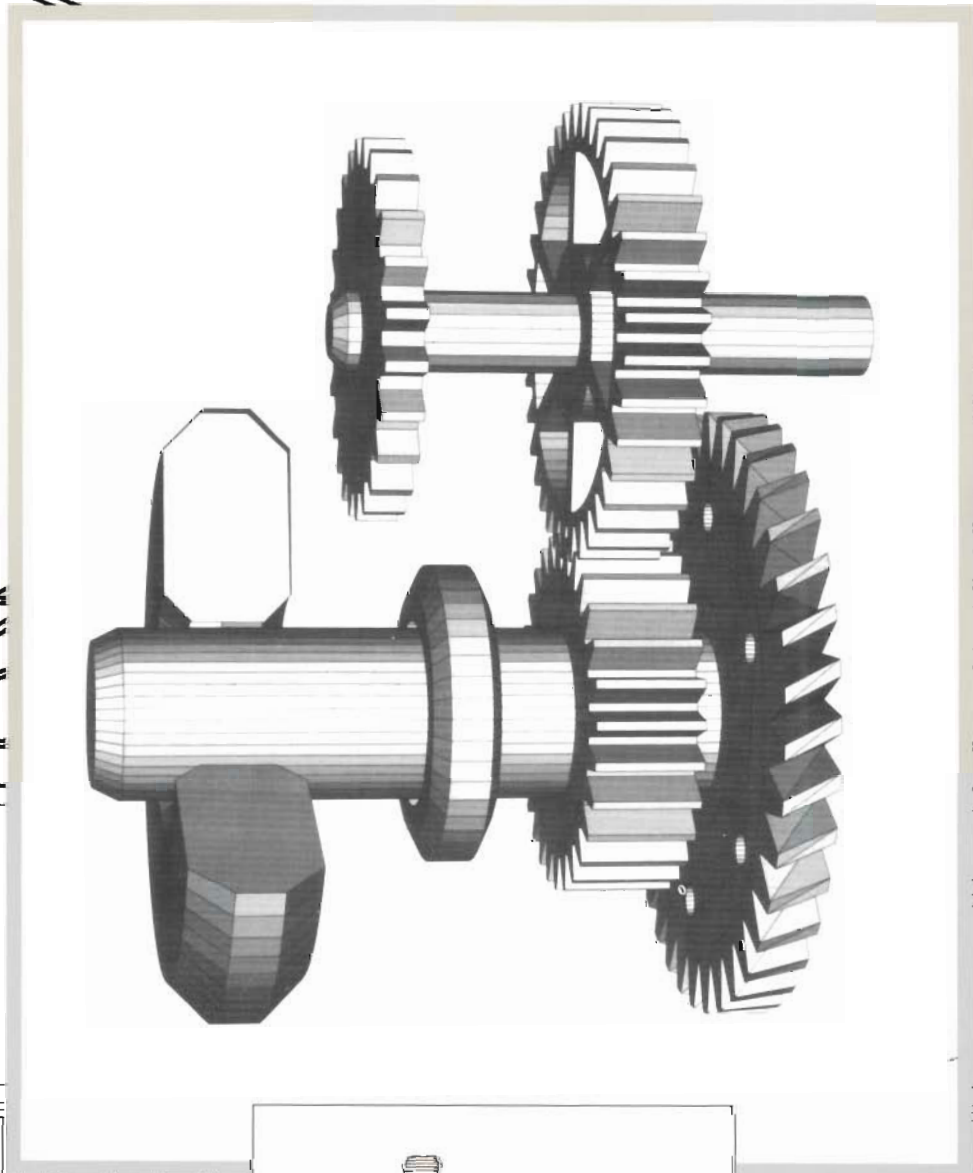
With more than 410 sales and service facilities in 76 countries worldwide, we give you the information and service you need when and where you need it. And we promise the availability of service, support, and parts for a minimum of 5 years after purchase.

Depend on HP.

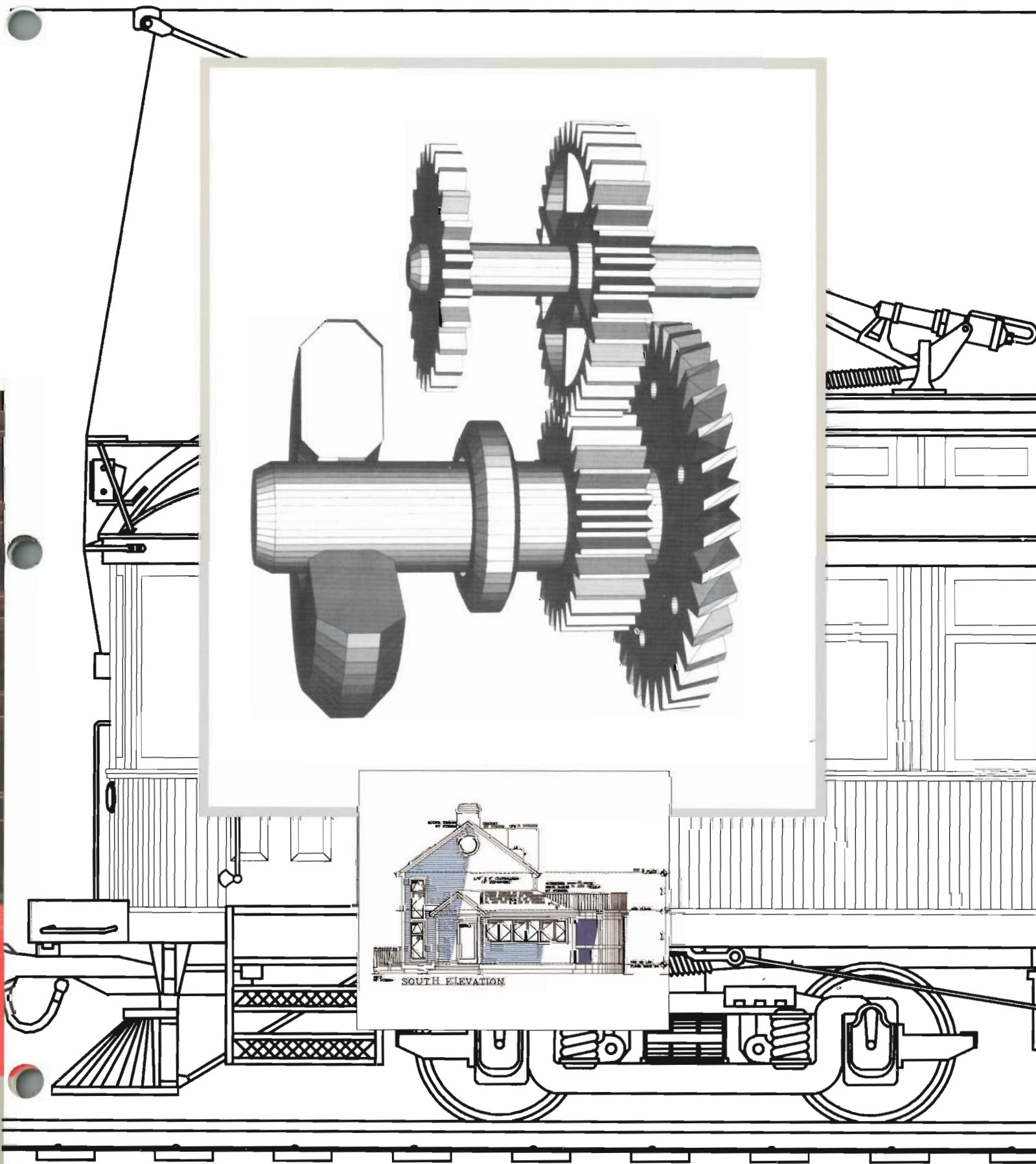
As your needs continue to change and grow, look to HP for the tools and the technology to get the job done. Choose a Hewlett-Packard product to show your ideas to their best advantage.

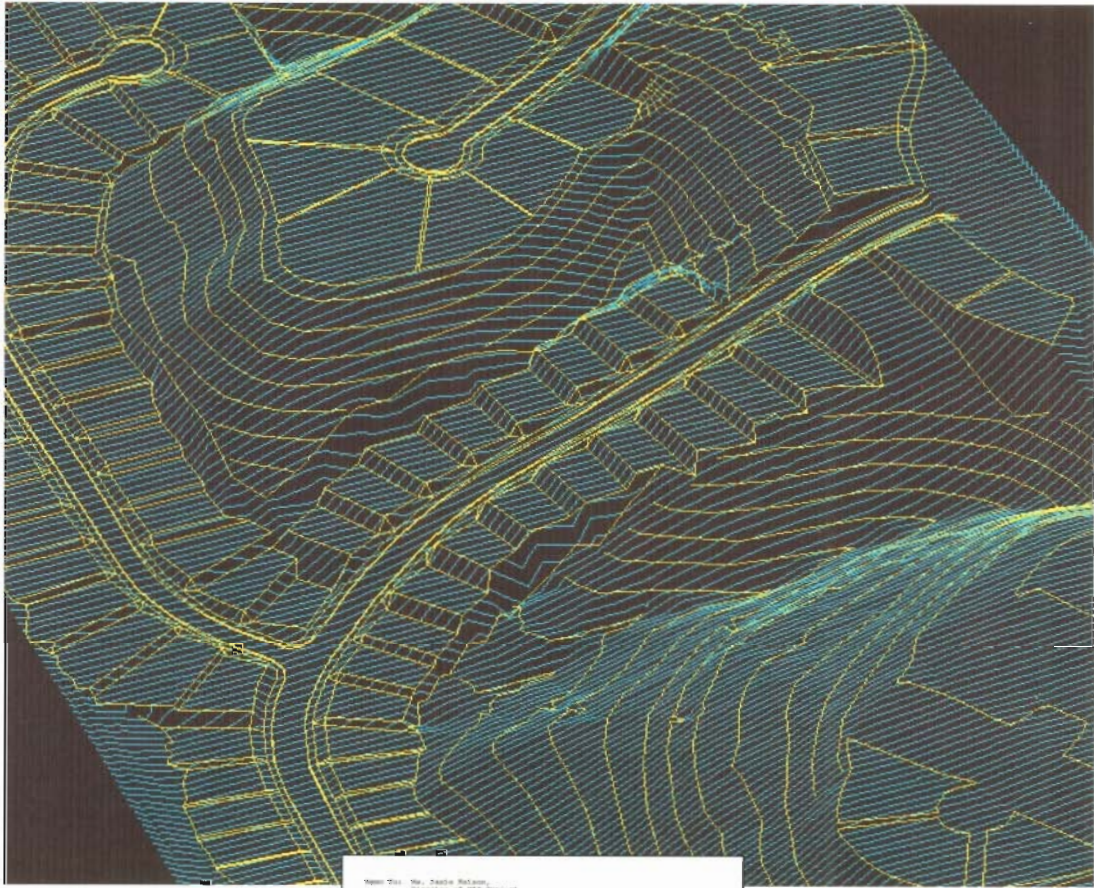
HP Computer Museum
www.hpmuseum.net

For research and education purposes only.



SOUTH ELEVATION

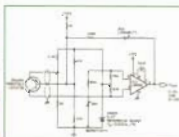




Meet Tom, Mr. Zappa Nelson,
 Director of R&D Support
 Meet Ernie, Mr. J. S. Reynolds
 Director of Engineering

As you know, one of our sales goals as department manager has been to provide
 our people with a way to print quality documents quickly and easily at an
 affordable price. And preferably in color—because it's such a great way
 to communicate complicated information. At last, you found the ideal
 solution for all of needs: the new Polaroid color graphics printer. From
 Hewlett-Packard. And the color printing package from Polaroid Software.

The Polaroid color graphics printer is...
 The Polaroid color graphics printer is...
 The Polaroid color graphics printer is...



POLARIS
 SOFTWARE

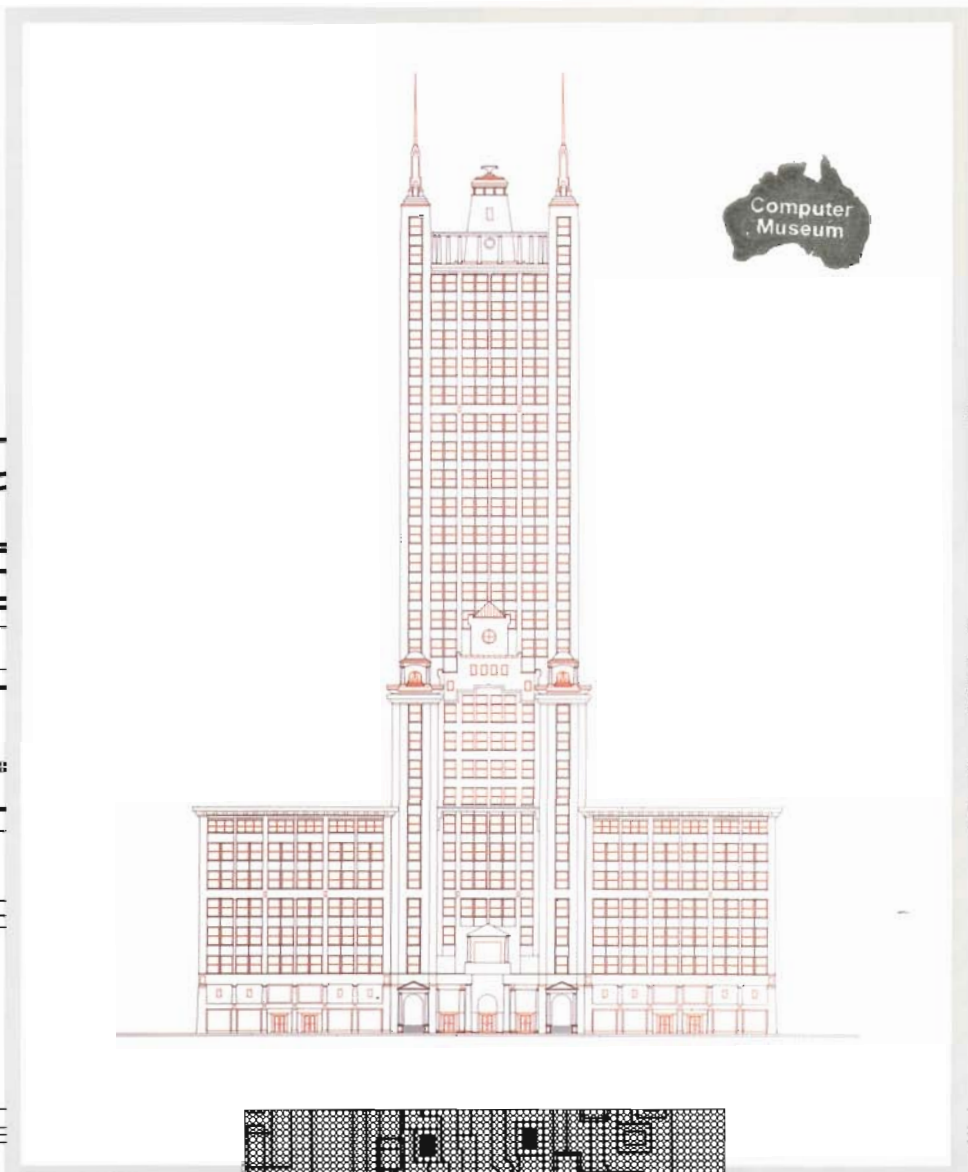
The Polaroid color graphics printer is...
 The Polaroid color graphics printer is...
 The Polaroid color graphics printer is...

Zappa, I think you should move on this. My department has waited a long
 time for a color solution to our printing requirements. And looking from
 this angle, the HP Polaroid color graphics printer and Polaroid Software
 software from Polaroid are it.

HEWLETT
 PACKARD

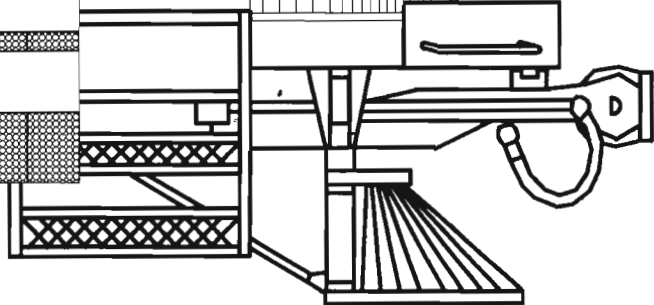
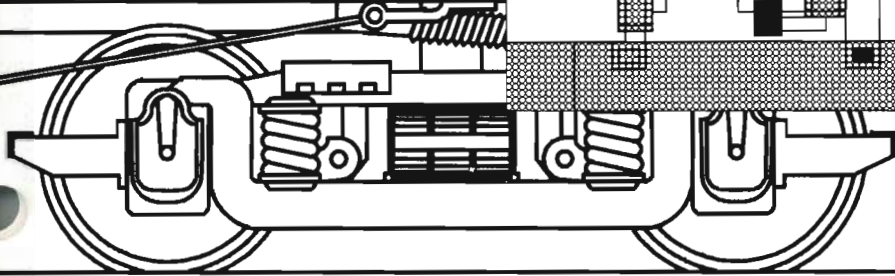
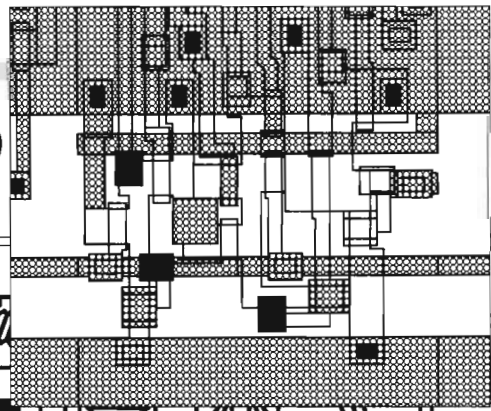
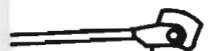
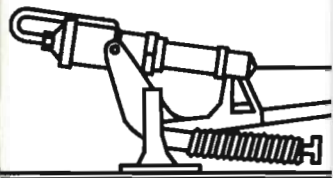
PACIFIC

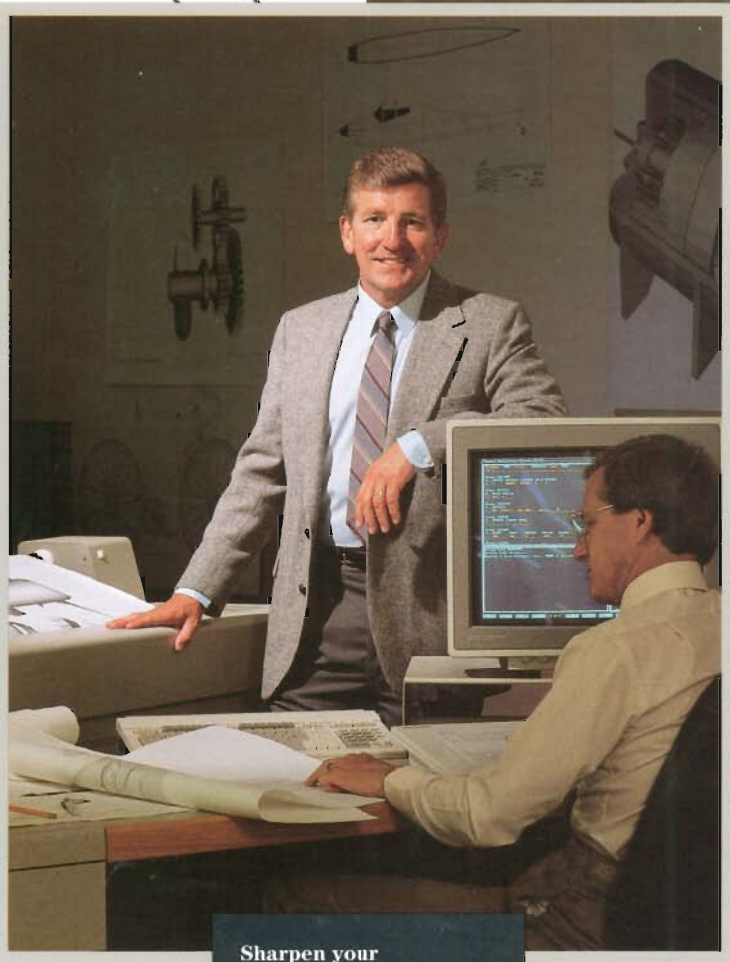
ELECTRIC



Computer
Museum

100





Sharpen your competitive edge

The speed of an HP 7600 Series electrostatic plotter is just the advantage you need. And at 406 dpi, line quality is excellent. Whether you're designing intricate printed circuit boards or state-of-the-art aircraft, the speed and quality of our HP 7600 Series monochrome and color electrostatic plotters will show your ideas to their best advantage.

J9

R29

J4

U47

HP 7600 Series monochrome and color electrostatic plotters— Ideal for high-volume, shared environments.

CAD output can take weeks, even months, to develop. But when you need to present results, every minute counts. That's where HP 7600 Series monochrome and color electrostatic plotters come in. HP 7600 Series Models 250 and 255 monochrome electrostatic plotters and Model 355 color plotter offer the speed and reliability that are critical to high-volume plotting environments. And all three models offer high-quality, 406 dots-per-inch (dpi) resolution for line drawings, complex plots, or shaded renderings in mapping, surveying, mechanical, civil, and electrical engineering applications.

Fast, high-quality output.

When you produce 25 or more plots per day or create very complex plots, you need the throughput of an electrostatic plotter. Actual plotting time for typical final-quality, full-size, monochrome drawings is less than one minute (plus data transmission time), and less than eight minutes (plus data transmission time) for color.

The powerful HP 7600 Series rasterizer, built on the Motorola 32-bit processor, and the 40-Mbyte hard disk give you top performance and unique plot management capabilities. From the front panel you can queue up plots, change priorities within the queue, receive plots while plotting, or ask for multiple copies of a plot already transmitted. Activate plot nesting when you're doing several smaller drawings to minimize media usage and save money.



HP 7600 Series color electrostatic plotter

Color plotting for your most intricate layouts and schematics. Model 355 color plotter produces 36-inch output.



HP 7600 Series monochrome electrostatic plotters

Answering the needs of high-volume, multiuser environments by bringing traditional HP reliability to electrostatic plotting. Model 250 for 24-inch output; Model 255 for 36-inch output.

Advanced media handling.

A flexible media handling solution can go a long way toward making your multiuser plotting environment work smoothly. Our standard automatic cutter and media stacker let you neatly cut and stack drawings without operator intervention or manual cutting.


Overnight or remote plotting is easier and more convenient thanks to the built-in take-up reel. The take-up reel handles a full media roll. Use the built-in manual cutter to remove drawings from the take-up reel or separate long-axis plots.

Five different palettes—four of which are user-definable—can be accessed from the front panel. Each palette consists of 256 logical pens, and lets you choose type, width, and color for each pen. You can even select screened or patterned lines. The HP 7600 Series Models 250 and 255 can

produce 64 shades of gray, all accessible from the front panel or through software. The Model 355 color plotter uses dithering algorithms to produce thousands of colors and shades, with access to 2000 of them from the front panel.

Count on HP reliability.

Our HP 7600 Series Models 250, 255, and 355 electrostatic plotters meet the same strict standards for quality and reliability that have made HP pen plotters industry leaders. We know that product reliability means less downtime, improved productivity, and lower service and support costs. That's why we back our reliability claim with a one-year on-site warranty and the lowest service contract prices in the industry.



Expect the best.

When you buy a pen plotter from the industry's leading manufacturer, quality is a given. Adding an HP pen plotter to your CAD system is adding a tool that's specifically designed to enhance the accuracy and consistency of your work. When a job has your name on it, why use anything but the best?



Exceed expectations

Staying competitive takes more than just meeting expectations. Pen plotters are so versatile, they'll maximize your efforts. From working drawings at concept stage to final-quality plots you'll proudly pass on to your most valued clients. You'll get your work done faster and you'll see better results.

. . . Affordable enough for personal plotting.



HP 7550 Plus pen plotter

This A4/A- and A3/B- size desktop plotter combines fast, high-quality performance with extensive built-in intelligence and automatic sheet feed to handle your heaviest workloads.



HP 7475 pen plotter

Handles everything from mechanical drawings on polyester film to presentation overheads. This popular six-pen plotter uses A4/A- and A3/B- size media.

Dedicated to increasing your productivity.

The relatively low cost of pen plotters makes them a good match for PC CAD systems. Dedicate several plotters to centralized workstations or small work groups. Or use them as local, dedicated peripherals. The advantage is convenient, immediate access to your plotter when you need to change pen types or paper. With an HP pen plotter, the right solution for you is close at hand.

Hewlett-Packard plotters perform under a wide range of operating conditions, so you can rely on them in your most demanding environments. The HP 7475 and HP 7550 Plus are convenient desktop plotters—for personal plotting, fast check plots, and professional presentation graphics. And our large-format pen plotters are on wheels, so it's easy to move them from one work area to the next.

Complete software support.

HP 7475 and HP 7550 Plus desktop plotters are supported by both CAD and popular business graphics packages for a wide range of applications. And HP DraftMaster and HP DraftPro Series plotters are supported by more than 100 CAD software packages, including AutoCad, VersaCAD, Personal Designer, and HP ME-10.

Up and down the line, Hewlett-Packard pen plotters are the very best products for CAD applications. From desktop to drafting, there's an HP pen plotter for your budget and your needs.

- HP 7475 desktop plotter for convenient, small-format plots.
- HP 7550 Plus desktop plotter for high-quality throughput, 1- or 2-Mbyte memory board option, flexible interface options, and HP-GL/2 capability.
- HP DraftPro drafting plotter for affordability, quality, and reliability.
- HP DraftPro DXL and EXL for added performance, features, and value.
- HP DraftMaster Series plotters for fast throughput, excellent line quality, many convenience features, and automatic paper advance (RX and MX models).

HP-GL/2 reduces transmission time

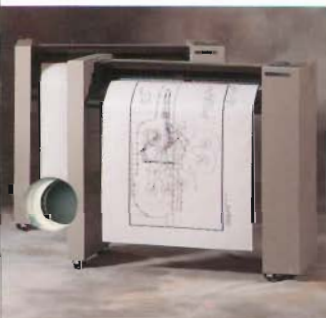
HP-GL/2 is Hewlett-Packard's new standard graphics language. HP-GL/2's improved language efficiency substantially reduces transmission time, freeing you and your computer quickly for the next task. HP DraftMaster SX, RX, and MX pen plotters, HP 7550 Plus pen plotter, HP 7600 Series Models 240D, 240E, 250, and 255 monochrome electrostatic plotters and Model 355 color electrostatic plotter, and the HP PaintJet XL color graphics printer (with optional HP-GL/2 cartridge) all implement HP-GL/2 language.

Hewlett-Packard Pen Plotters— Powerful enough for CAD workstations . . .



HP DraftMaster MX pen plotter

HP's most advanced pen plotter. It has every capability of HP DraftMaster RX, plus multiuser interface for up to four users, a 20-Mbyte intelligent plot spooler, and advanced plot file management features.



HP DraftMaster SX and RX pen plotters

HP's premier pen plotters. DraftMaster SX for fast, quality sheet-feed plotting. The 1-Mbyte buffer frees up your computer more quickly. DraftMaster RX has all the features of DraftMaster SX, plus roll feed and take-up reel.



HP DraftPro DXL & EXL pen plotters

Ideal for personal CAD systems. Two plug-in buffer options available to enhance productivity. HP DraftPro DXL for A4/A-1/D plotting; DraftPro EXL for A4/A-A0/E sizes.



HP DraftPro pen plotter

Designed especially for low cost CAD systems, this A2/C- and A1/D-size plotter delivers high reliability at a reasonable price.

CAD encompasses a wide range of needs and applications: design, analysis, documentation, and presentation to name only a few. So we've developed a broad line of pen plotters to offer you a choice of performance levels and price ranges. All with the quality and reliability Hewlett-Packard is famous for.

We demonstrate confidence in our pen plotters with the best warranty in the business: one-year on-site (up to 100 miles) for large-format plotters; one-year return to HP for small-format HP 7550 Plus and 7475 plotters. So you can stake your reputation on getting the job done, knowing you're backed by Hewlett-Packard.

Setting the standard for color line drawings.

Look to pen plotters when you need professional line quality and a choice of colors. HP pen plotters give you the advantage of high resolution. It's just one of the reasons why Hewlett-Packard pen plotters set the industry standard for quality. In fact, our HP 7550 Plus and large-format pen plotters draw with a resolution that's finer than their addressable resolution. This ensures straight lines, clear text, and smooth curves in every plot.

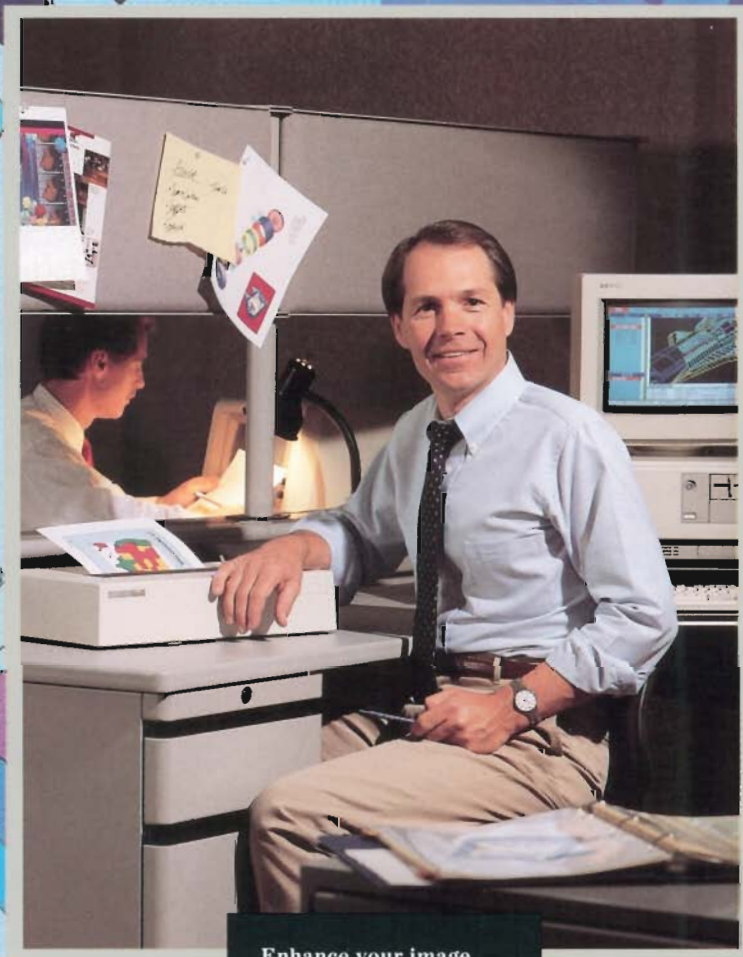
Our pen carousels hold from six to eight pens for a variety of colors, line widths, and ink types. All to help convey meaning and differentiate lines in your drawings.

Versatility from desktop to drafting.

Whatever your work dictates, we offer solutions from small-format A4/A- and A3/B-size desktop to large-format A1/D- and A0/E-size drafting plotters.

We give you pen and media flexibility, too. Like fiber-tip pens for paper and transparency film; new HP SurePlot disposable drafting pens for paper and vellum; disposable and refillable drafting pens for vellum, paper, and polyester film; and (with HP 7550 Plus and DraftMaster Series) roller-ball pens for paper and tracing bond.

These pen and media combinations let you create everything from final-quality plots on archival media to fast working drawings on less expensive paper. And overhead transparency film gives you a professional way to present ideas to clients and management.



Enhance your image

The HP PaintJet Series color graphics printers are the perfect tools for showing—and telling—great ideas. An extensive color palette brings graphics to life. And high-speed convenience printing makes sure your message hits home. After all, the more convincing your communications are, the better you look.

HP PaintJet and PaintJet XL Color Graphics Printers— Complex color graphics and near-letter-quality text.

Powerful graphics. Eight primary colors and up to thousands of shades and hues, depending on your software. Add near-letter-quality text and you've got the HP PaintJet Series color graphics printers. HP PaintJet for A4/A-size cut-sheet paper, Z-fold paper, and transparency film. HP PaintJet XL for A4/A- and A3/B-size cut-sheet paper and transparency film. Both built to be so reliable, a one-year warranty is standard.

Thermal-inkjet technology makes fast, quality throughput a reality for HP PaintJet Series color graphics printers. Micro-thermal resistors control ink flow within twenty-five thousandths of a second, printing only when you need it. Our disposable print cartridges give you vibrant color text and graphics on both paper and transparency film.

The best of both worlds.

From simple line drawings to complex color graphics, you'll appreciate the flexibility of HP PaintJet Series color graphics printers. Shading and color gradations bring solid models and 3-D images to life. And both models print clear, vibrant copies of your computer screen as easily as they print engineering output.

HP PaintJet can print A-size output in less than four minutes. HP PaintJet XL can produce the same size graphic in less than 90 seconds; B-size graphics in under 3 minutes. And both HP PaintJet and HP PaintJet XL print 167 characters per minute, so you can quickly compose memos or add text to graphics.



HP PaintJet XL color graphics printer

Your choice for a color graphics printer when you need fast A4/A- and A3/B-size output. HP PaintJet XL also offers automatic sheet feed, optional HP-GL/2 cartridge and enhanced font capabilities.



HP PaintJet color graphics printer

Ideal when you need full-color shaded CAD drawings plus near-letter-quality text for memos, reports, and presentation graphics. Use with A4/A-size cut-sheet, Z-fold paper, or transparency film.

There's more to resolution than meets the eye.

Raster resolution means more than dots per inch. HP PaintJet Series printers print larger dots than many color printers, spaced so closely together you don't see gaps between dots.

And PaintJet Series printers work together with paper designed to control dot size precisely and keep ink pigment close to the surface for bright colors. In transparency mode, PaintJet Series printers print twice as many dots, so colors stay bold when projected on overhead screens.

Easy to get along with.

Affordable price, quiet operation, and quality output are good reasons to choose an HP PaintJet Series color graphics printer. PaintJet Series printers are compatible with the HP Vectra, IBM, and Compaq PC's and compatibles. Team them with our

interface kit for Apple Macintosh Plus, Portable, SE, and II Series compatibility. And the new HP PaintWriter XL offers Macintosh users all the advantages of PaintJet XL, plus a dedicated Mac design, built-in Apple Talk capability, high speed RS-422-A interface, and 32-bit QuickDraw set-up disks.

HP PaintJet Series printers are supported by major PC CAD software including AutoCAD, AutoShade, VersaCAD, and CADKEY. They're also supported by leading productivity, word processing, utility, and desktop presentation packages. And the optional HP-GL/2 cartridge available for PaintJet XL gives your printer instant connectivity to programs supporting this new graphics language.

This powerful blend of color, convenience, and compatibility make HP PaintJet Series color graphics printers—and you—real winners.

HP SketchPro graphics tablet— Enhances any PC CAD system.

HP SketchPro graphics tablet

A small-format graphics tablet designed especially for PC CAD systems. It has a built-in mouse mode and comes with both cursor and stylus.

Increase your input efficiency with an HP SketchPro graphics tablet. You can draw, trace, and use menu utilities to select commands and objects. The HP SketchPro graphics tablet is a smart addition to your personal PC CAD system. And the small (11 × 11 in.) footprint saves valuable desk space.

More than a mouse.

If you've been using a mouse to create drawings, consider this: in interactive applications a tablet is 3.5 times faster at positioning the cursor than a mouse. And when it comes to accuracy, the quality HP SketchPro has five times the resolution of a mouse. You'll find the HP SketchPro tablet easier to operate, too.

The HP SketchPro tablet comes with a stylus and a four-button cursor. And SketchPro has four operating modes, including Microsoft® mouse emulation mode for use with desktop publishing and business graphics software. Built-in softkeys make it easy to switch between mouse mode and tablet mode.

HP SketchPro's three tablet modes give you support with today's most popular CAD software, including AutoCAD, VersaCAD, and CADKEY.

Built-in reliability.

Permuted Trace Ordering (PTO) technology (patent pending) reduces SketchPro's parts count giving you exceptional reliability. You can be sure the HP SketchPro graphics tablet meets the high reliability standards you've come to expect from Hewlett-Packard.

Product	Color Capability	Performance	Resolution	Repeatability
Electrostatic Plotters				
HP 7600 Series				
Model 355	Color (2000+ user selectable colors)	3.2 cm/s (1.18 in/s) max. print speed	406 dpi	N/A
Model 255	Monochrome (64 shades of gray)	2.2 cm/s (0.86 in/s) max. print speed	406 dpi	N/A
Model 250	Monochrome (64 shades of gray)	1.6 cm/s (0.64 in/s) max. print speed	406 dpi	N/A
Pen Plotters				
HP DraftMaster MX	8 pens	Max. acceleration: 5.7 g;	Mech: 0.00625 mm (0.00025 in)	0.1 mm (0.004 in)
HP DraftMaster RX	8 pens	Max. pen velocity: 110 cm/s (43 in/s)	Addr: 0.025 mm (0.001 in)	
HP DraftMaster SX	8 pens			
HP DraftPro EXL	8 pens	Max. acceleration: 2.8 g;	Mech: 0.013 mm (0.0005 in)	0.1 mm (0.004 in)
HP DraftPro DXL	8 pens	Max. pen velocity: 80 cm/s (32 in/s)	Addr: 0.025 mm (0.001 in)	
HP DraftPro	8 pens	Max. acceleration: 2.8 g;	Mech: 0.013 mm (0.0005 in)	0.1 mm (0.004 in)
		Max. pen velocity: 40 cm/s (16 in/s)	Addr: 0.025 mm (0.001 in)	
HP 7550 Plus	8 pens	Max. acceleration: 6 g;	Mech: 0.00625 mm (0.00025 in)	0.1 mm (0.004 in)
		Max. pen velocity: 80 cm/s (32 in/s)	Addr: 0.025 mm (0.001 in)	
HP 7475	6 pens	Max. acceleration: 2.8 g;	Mech: 0.025 mm (0.001 in)	0.1 mm (0.004 in)
		Max. pen velocity: 38.1 cm/s (15 in/s)	Addr: 0.025 mm (0.001 in)	
Color Graphics Printers				
HP PaintJet XL	8 primary colors plus thousands of shades (depending on software)	Text: 167 cps (10 pitch); 200 cps (12 pitch)	180 × 180 dpi	N/A
		Graphics: 1.5 min (A4/A) 3 min (A3/B)		
HP PaintJet	8 primary colors plus thousands of shades (depending on software)	Text: 167 cps (10 pitch); 200 cps (12 pitch)	180 × 180 dpi	N/A
		Graphics: 4 min (A4/A paper)		

Features and Technical Information.

When you're making a purchase decision, the right choice for you is the product that fits your budget and your needs. Our combination of features, quality, and reliability makes Hewlett-Packard CAD peripherals an excellent value and a smart choice.

For CAD peripherals that are backed by extensive research, thorough testing and documentation, and worldwide service and support, choose Hewlett-Packard.

Media Sizes	Media Types	Pen Types/Toner/Cartridges
914 mm (36 in) rolls 914 mm (36 in) rolls 609 mm (24 in) rolls	Premium grade paper, vellum, translucent (monochrome only), clear and matte films Report and premium grade paper, vellum, translucent, clear and matte films Report and premium grade paper, vellum, translucent, clear and matte films	Black, cyan, magenta, and yellow toners Black toner Black toner
A4/A-A0/E and rolls A4/A-A0/E and rolls A4/A-A0/E	Paper (regular and glossy), transparency film, polyester film, vellum, tracing bond	Fiber-tip (paper and transparency), disposable drafting and refillable drafting, roller-ball
A4/A-A0/E A4/A-A1/D	Paper (regular and glossy), transparency film, polyester film, vellum	Fiber-tip (paper and transparency), disposable drafting and refillable drafting
A2/C and A1/D	Paper (regular), polyester film, vellum	Fiber-tip (paper), disposable drafting and refillable drafting
A4/A and A3/B	Paper (regular and glossy), transparency film, polyester film, vellum	Fiber-tip (paper and transparency), disposable drafting and refillable drafting, roller-ball
A4/A and A3/B	Paper (regular and glossy), transparency film, polyester film	Fiber-tip (paper and transparency)
A4/A and A3/B	Cut-sheet paper, cut-sheet transparency film	4 disposable cartridges (black, yellow, cyan, magenta) for use on paper and transparency film
	Cut-sheet paper, cut-sheet transparency film, Z-fold paper	2 disposable cartridges (black, multicolor) for use on paper and transparency film

United States:

For the name of the authorized HP dealer near you, call toll-free 1-800-752-0900. Or contact one of HP's regional offices listed below:

Hewlett-Packard Company

4 Choke Cherry Road
Rockville, MD 20850
301 670 4300

Hewlett-Packard Company

5201 Tollview Drive
Rolling Meadows, IL 60008
312 255 9800

Hewlett-Packard Company

5161 Lankershim Blvd.
No. Hollywood, CA 91601
818 505 5600

Hewlett-Packard Company

2015 South Park Place
Atlanta, GA 30339
404 955 1500

Canada:

Hewlett-Packard Ltd.
6877 Goreway Drive
Mississauga, Ontario L4V1M8
416 678 9430

Australia/New Zealand:

Hewlett-Packard Australia Ltd.
31-41 Joseph Street
Blackburn, Victoria 3130
Australia
03 895 2895

Europe/Africa/Middle East:

Hewlett-Packard S.A.
Central Mailing Department
P.O. Box 529
1180 AM Amstelveen
The Netherlands
31 20/547 9999

Far East:

Hewlett-Packard Asia Ltd.
22/F Bond Centre
West Tower
89 Queensway
Central, Hong Kong
5 848 7777

Japan:

Yokogawa Hewlett-Packard Ltd.
29-21, Takaido-Higashi 3-chome
Suginami-ku, Tokyo 168
03 331 6111

Latin America:

Latin American Region Headquarters
Monte Pelvoux Nbr. 111
Lomas de Chapultepec
11000 Mexico D.F., Mexico
905 596 79 33

AutoCAD is a trademark of Autodesk, Inc.
Apple and Macintosh are trademarks of
Apple Computer, Inc. Microsoft is a U.S.
registered trademark of Microsoft, Inc.
Isometric projection of subdivision design
by Martin Engineering Company,
Escondido, CA

**Technical information in this document
is subject to change without notice.**

**Copyright © 1990
Hewlett-Packard Company**

**Printed in U.S.A. 7/90
5952-1018**