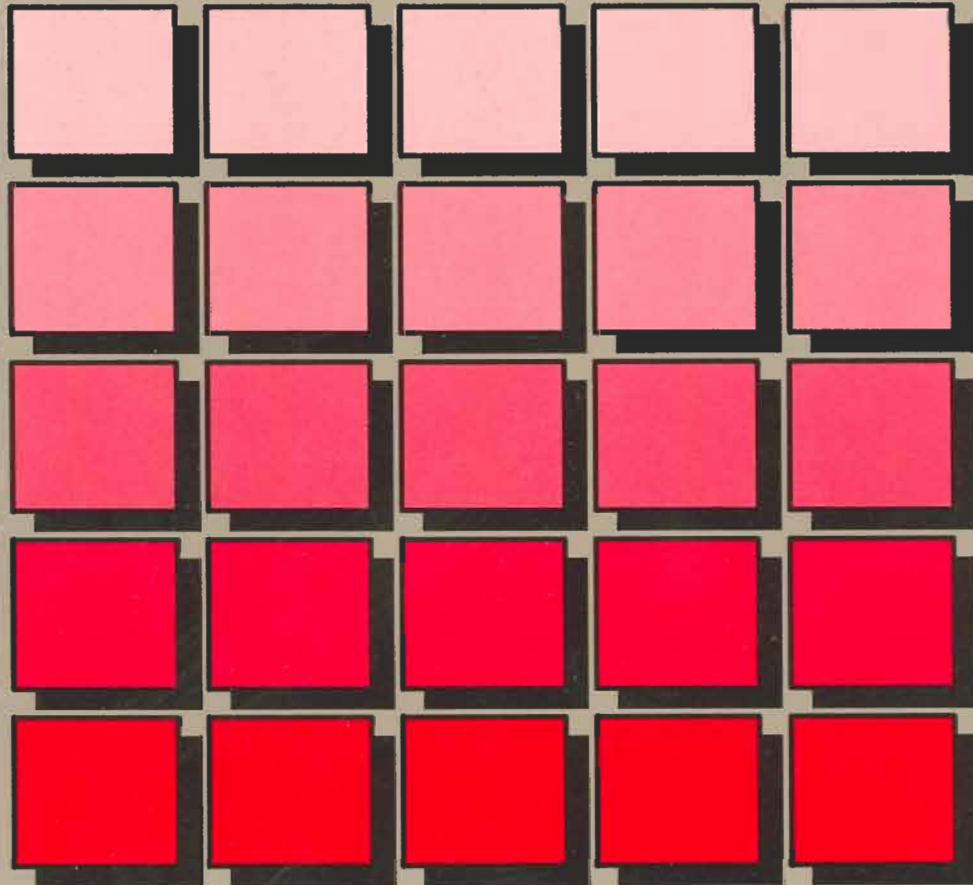


## Finding HP-UX Information



# **Finding HP-UX Information**

## **HP 9000 Series 300 Computers**



**HEWLETT  
PACKARD**

**HP Part No. 98594-90081  
Printed in USA September, 1989**

**Edition 1  
E0989**

**HP Computer Museum**  
**[www.hpmuseum.net](http://www.hpmuseum.net)**

**For research and education purposes only.**

---

## Legal Notices

The information in this document is subject to change without notice.

*Hewlett-Packard makes no warranty of any kind with regard to this manual, including, but not limited to, the implied warranties of merchantability and fitness for a particular purpose.* Hewlett-Packard shall not be held liable for errors contained herein or direct, indirect, special, incidental or consequential damages in connection with the furnishing, performance, or use of this material.

**Warranty.** A copy of the specific warranty terms applicable to your Hewlett-Packard product and replacement parts can be obtained from your local Sales and Service Office.

©copyright 1983, 84, 85, 86, 87, 88, 89 Hewlett-Packard Company

This document contains information which is protected by copyright. All rights are reserved. Reproduction, adaptation, or translation without prior written permission is prohibited, except as allowed under the copyright laws.

**Restricted Rights Legend.** Use, duplication, or disclosure by the U.S. Government Department of Defense is subject to restrictions as set forth in paragraph (b)(3)(ii) of the Rights in Technical Data and Software clause in FAR 52.227-7013.

©copyright 1980, 84, 86 AT&T Technologies, Inc.

UNIX and System V are registered trademarks of AT&T in the USA and other countries.

©copyright 1979, 80, 83, 85-88 Regents of the University of California

This software is based in part on the Fourth Berkeley Software Distribution under license from the Regents of the University of California.

©copyright 1979 Regents of the University of Colorado, A Body Corporate

This document has been reproduced and modified with the permission of the regents of the University of Colorado, a body corporate.

©copyright 1986, 87, 88 Sun Microsystems, Inc.

©copyright 1986 Digital Equipment Corporation

©copyright 1985, 86 Massachusetts Institute of Technology

X Window System is a trademark of the Massachusetts Institute of Technology.

MS-DOS and Microsoft are U.S. registered trademarks of Microsoft Corporation.

OSF/Motif is a trademark of the Open Software Foundation, Inc. in the U.S. and other countries. Certification for conformance with OSF/Motif user environment pending.

---

## Printing History

The manual printing date and part number indicate its current edition. The printing date will change when a new edition is printed. Minor changes may be made at reprint without changing the printing date. The manual part number will change when extensive changes are made.

Manual updates may be issued between editions to correct errors or document product changes. To ensure that you receive the updated or new editions, you should subscribe to the appropriate product support service. See your HP sales representative for details.

September 1989 ... Edition 1

# Contents

---

|  |      |
|--|------|
| <b>1. How to Use This Guide</b>                              |      |
| The Purpose of This Guide . . . . .                          | 1-1  |
| The Structure of This Guide . . . . .                        | 1-1  |
| Finding Information about Tasks . . . . .                    | 1-1  |
| <b>2. HP-UX Manual Citations</b>                             |      |
| About This Section . . . . .                                 | 2-1  |
| How to Get Information About Manuals and Tasks . . . . .     | 2-2  |
| Locating Tasks . . . . .                                     | 2-2  |
| Browsing . . . . .   | 2-2  |
| Reading Information about a Particular Manual . . . . .      | 2-2  |
| Installing and Administering HP-UX . . . . .                 | 2-3  |
| Troubleshooting HP-UX Systems Error Diagnosis and Recovery   | 2-4  |
| HP-UX System Security . . . . .                              | 2-5  |
| Installing Peripherals HP 9000 Series 300 . . . . .          | 2-7  |
| Application Execution Environment User's Manual . . . . .    | 2-8  |
| HP 9000 Series 300 HP-UX Installation Manual . . . . .       | 2-9  |
| HP-UX System Administration Tasks HP 9000 Series 300         |      |
| Computers . . . . .  | 2-10 |
| HP 9000 Series 300 and 800 HP-UX System Administration       |      |
| Concepts Manual . . . . .                                    | 2-11 |
| Using HP-UX . . . . .  | 2-12 |
| HP-UX Reference . . . . .                                    | 2-13 |
| HP-UX Concepts and Tutorials: Text Editors and Processors .  | 2-14 |
| HP-UX Concepts and Tutorials: Text Formatters . . . . .      | 2-15 |
| HP-UX Concepts and Tutorials: UUCP . . . . .                 | 2-16 |
| HP-UX Concepts and Tutorials: Shells and Miscellaneous Tools | 2-17 |
| A Beginner's Guide to HP-UX . . . . .                        | 2-18 |
| A Beginner's Guide to Using Shells . . . . .                 | 2-19 |
| A Beginner's Guide to Text Editing . . . . .                 | 2-20 |

|   |      |
|---|------|
| Finding HP-UX Information HP 9000 Series 300 . . . . .            | 2-21 |
| Quick Reference Card for vi Editor . . . . .                      | 2-22 |
| Introducing UNIX System V . . . . .                               | 2-23 |
| Database Management . . . . .                                     | 2-24 |
| ALLBASE/SQL Reference Manual . . . . .                            | 2-25 |
| ALLBASE/ISQL Reference Manual . . . . .                           | 2-26 |
| ALLBASE/SQL Database Administration Guide . . . . .               | 2-27 |
| ALLBASE/SQL Message Manual . . . . .                              | 2-28 |
| ALLBASE/SQL FORTRAN Application Programming Guide . . . . .       | 2-29 |
| ALLBASE/SQL C Application Programming Guide . . . . .             | 2-30 |
| ALLBASE/NET User's Guide . . . . .                                | 2-31 |
| ALLBASE/SQL Pascal Application Programming Guide . . . . .        | 2-32 |
| HP ALLBASE/4GL Developer Administration Manual . . . . .          | 2-33 |
| HP ALLBASE/4GL Developer Self-Paced Training Guide . . . . .      | 2-34 |
| HP ALLBASE/4GL Developer Reference Manual . . . . .               | 2-35 |
| HP ALLBASE/4GL Installation Guide . . . . .                       | 2-36 |
| HP ALLBASE/4GL Developer Quick Reference Guide . . . . .          | 2-37 |
| HP ALLBASE/4GL Run-Time Administration Manual . . . . .           | 2-38 |
| HP ALLBASE/QUERY User Guide . . . . .                             | 2-39 |
| HP ALLBASE/QUERY Installation Guide . . . . .                     | 2-40 |
| HP Ada/SQL Reference Manual . . . . .                             | 2-41 |
| Graphics . . . . .  | 2-42 |
| Starbase Driver Development Guide . . . . .                       | 2-43 |
| Device-Independent Graphics Library Programmer's Manual . . . . . | 2-44 |
| DGL/AGP Device Drivers Manual . . . . .                           | 2-45 |
| Advanced Graphics Package Programmer's Manual . . . . .           | 2-46 |
| Programming with the Starbase Integer Interface . . . . .         | 2-47 |
| Starbase Programming with X11 . . . . .                           | 2-48 |
| Starbase Device Drivers Library Manual . . . . .                  | 2-49 |
| Starbase C Pocket Reference . . . . .                             | 2-50 |
| Starbase FORTRAN Pocket Reference . . . . .                       | 2-51 |
| A Beginner's Guide to Using Starbase . . . . .                    | 2-52 |
| Starbase Pascal Pocket Reference . . . . .                        | 2-53 |
| Starbase Reference . . . . .                                      | 2-54 |
| Starbase Graphics Techniques . . . . .                            | 2-55 |
| Fast Alpha/Font Manager Programmer's Manual . . . . .             | 2-56 |
| HP-GKS User's Guide . . . . .                                     | 2-57 |
| HP-GKS Device Drivers Library . . . . .                           | 2-58 |



|   |      |
|---|------|
| HP-GKS FORTRAN Pocket Reference . . . . .                   | 2-59 |
| ANSI Graphics Kernel System (GKS) Functional Description .  | 2-60 |
| Starbase Display List Programmer's Manual . . . . .         | 2-61 |
| Turbo SRX Graphics Demo Guide . . . . .                     | 2-62 |
| Starbase Radiosity and Ray Tracing Programmer's Manual . .  | 2-63 |
| Ada/GKS Binding Reference Manual . . . . .                  | 2-64 |
| Ada/Starbase Binding Reference Manual . . . . .             | 2-65 |
| Windowed Display Systems . . . . .                          | 2-66 |
| Programming with the Xrlib User Interface Toolbox . . . . . | 2-67 |
| Programming with the X Window System . . . . .              | 2-68 |
| Getting Started With the X Window System . . . . .          | 2-69 |
| Term0 Reference Manual . . . . .                            | 2-70 |
| HP Windows/9000 Documentation . . . . .                     | 2-71 |
| HP Windows/9000 Reference . . . . .                         | 2-72 |
| A Beginner's Guide to the X Window System . . . . .         | 2-73 |
| Programming with the HP X Widgets and the Xt Intrinsics .   | 2-74 |
| Using the X Window System . . . . .                         | 2-75 |
| Programming with Xlib . . . . .                             | 2-76 |
| X Window System C Quick Reference Guide . . . . .           | 2-77 |
| Installing and Configuring the X Window System . . . . .    | 2-78 |
| HP OSF/Motif Programmer's Guide . . . . .                   | 2-79 |
| HP OSF/Motif Programmer's Reference . . . . .               | 2-80 |
| HP OSF/Motif Style Guide . . . . .                          | 2-81 |
| Programming with the Xt Intrinsics . . . . .                | 2-82 |
| HP Windows/9000 to X Window System Conversion Guide .       | 2-83 |
| Networking . . . . .  | 2-84 |
| HP-UX SNA3270 and Gateway/SNA3270 Reference Manual .        | 2-85 |
| HP-UX SNALink and Gateway/SNALink Reference Manual .        | 2-86 |
| HP-UX SNA/9000 Manual Reference Pages . . . . .             | 2-87 |
| X.25/9000 Programmer's Guide . . . . .                      | 2-88 |
| Installing and Administering X.25/9000 . . . . .            | 2-89 |
| Troubleshooting X.25/9000 . . . . .                         | 2-90 |
| RJE (Remote Job Entry) User's Manual . . . . .              | 2-91 |
| HP-UX SNA3770 and Gateway/SNA3770 Reference Manual .        | 2-92 |
| Networking Reference Pages . . . . .                        | 2-93 |
| LLA Programmer's Guide . . . . .                            | 2-94 |
| Berkeley IPC Programmer's Guide . . . . .                   | 2-95 |
| NetIPC Programmer's Guide . . . . .                         | 2-96 |

|  |       |
|--|-------|
| LAN/X.25 Reference Pages . . . . .                                 | 2-97  |
| Installing and Administering LAN/9000 Series 300 . . . . .         | 2-98  |
| SRM Access Utilities for HP-UX . . . . .                           | 2-99  |
| HP-UX SNA3179G and Gateway/SNA3179G Reference Manual               | 2-100 |
| Using Network Services . . . . .                                   | 2-101 |
| Installing and Administering Network Services . . . . .            | 2-102 |
| Network Services Reference Pages . . . . .                         | 2-103 |
| Networking Overview . . . . .                                      | 2-104 |
| Using NFS Services . . . . .                                       | 2-105 |
| Installing and Administering NFS Services . . . . .                | 2-106 |
| Programming and Protocols for NFS Services . . . . .               | 2-107 |
| NFS Services Reference Pages . . . . .                             | 2-108 |
| Using ARPA Services . . . . .                                      | 2-109 |
| Installing and Administering ARPA Services . . . . .               | 2-110 |
| ARPA/Berkeley Services Reference Pages . . . . .                   | 2-111 |
| Native Language Support and Input/Output . . . . .                 | 2-112 |
| Simplified Chinese Input Method Guide . . . . .                    | 2-113 |
| Simplified Chinese Code Book . . . . .                             | 2-114 |
| Traditional Chinese Input Method Guide . . . . .                   | 2-115 |
| Traditional Chinese Code Book . . . . .                            | 2-116 |
| Native Language I/O Access User's Guide . . . . .                  | 2-117 |
| Native Language I/O System Administrator's Guide . . . . .         | 2-118 |
| Native Language Support: HP-UX Concepts and Tutorials . . . . .    | 2-119 |
| Kanji Code Book . . . . .  | 2-120 |
| Japanese Input Method Guide . . . . .                              | 2-121 |
| Programming on HP-UX (General) . . . . .                           | 2-122 |
| HP-UX Concepts and Tutorials: Programming Environment . . . . .    | 2-123 |
| HP-UX Concepts and Tutorials: Device I/O and User                  |       |
| Interfacing . . . . .  | 2-124 |
| HP-UX Concepts and Tutorials: Facilities for 200/300/500 . . . . . | 2-125 |
| Floating Point Accelerator Reference . . . . .                     | 2-126 |
| HP-UX POSIX Conformance Document . . . . .                         | 2-127 |
| HP-UX Portability Guide: HP 9000 Series 300/800 Computers          | 2-128 |
| Programming in Ada . . . . .                                       | 2-129 |
| Reference Manual for the Ada Programming Language . . . . .        | 2-130 |
| Programming in Ada . . . . .                                       | 2-131 |
| Ada User's Guide . . . . .   | 2-132 |

|  |       |
|--|-------|
| Reference Manual for the Ada Programming Language,<br>Appendix F . . . . .     | 2-133 |
| Ada Tools Manual . . . . .   | 2-134 |
| Programming in Assembly Language . . . . .                                     | 2-135 |
| M68000 16/32-Bit Microprocessor Programmer's Reference<br>Manual . . . . .     | 2-136 |
| HP-UX Assembler Reference Manual and Supporting<br>Documents . . . . .         | 2-137 |
| MC68020 32-Bit Microprocessor User's Manual . . . . .                          | 2-138 |
| MC68881 Floating-Point Coprocessor User's Manual . . . . .                     | 2-139 |
| Programming in BASIC . . . . .   | 2-140 |
| HP-UX Technical BASIC Programming Guide for HP 9000<br>Computers . . . . .     | 2-141 |
| HP-UX Technical BASIC Getting Started Guide for HP 9000<br>Computers . . . . . | 2-142 |
| Appendix: HP-UX Technical BASIC Implementation Specifics                       | 2-143 |
| HP-UX Technical BASIC I/O Programming Guide for HP 9000<br>Computers . . . . . | 2-144 |
| HP-UX Technical BASIC Reference Manual for HP 9000<br>Computers . . . . .      | 2-145 |
| HP-UX Technical BASIC Quick Reference Guide . . . . .                          | 2-146 |
| Using the BASIC/UX System . . . . .  | 2-147 |
| BASIC/UX Compiler User's Manual . . . . .                                      | 2-148 |
| BASIC/UX Programming Techniques . . . . .                                      | 2-149 |
| BASIC/UX Graphics Techniques . . . . .   | 2-150 |
| BASIC/UX Interfacing Techniques . . . . .                                      | 2-151 |
| Installing and Maintaining the BASIC/UX System . . . . .                       | 2-153 |
| BASIC/UX Language Reference . . . . .  | 2-154 |
| BASIC/UX Condensed Reference . . . . .   | 2-155 |
| Developing CSUBs for BASIC/UX . . . . .  | 2-156 |
| Programming in C . . . . .   | 2-157 |
| A Book on C . . . . .  | 2-158 |
| C Programmer's Guide: HP 9000 Series 300 Computers . . . . .                   | 2-159 |
| Programming in COBOL . . . . .   | 2-160 |
| COBOL/HP-UX Language Reference Manual . . . . .                                | 2-161 |
| COBOL/HP-UX Operating Manual . . . . .   | 2-162 |
| COBOL/HP-UX Animator/Forms-2 Manual . . . . .                                  | 2-163 |
| COBOL/HP-UX Pocket Guide . . . . .   | 2-164 |

|   |       |
|---|-------|
| Programming in FORTRAN . . . . .  | 2-165 |
| FORTRAN/9000 Reference . . . . .  | 2-166 |
| Programming in Lisp . . . . .   | 2-167 |
| Common LISP: The Language . . . . .   | 2-168 |
| HP Common Lisp II Installation Guide . . . . .                              | 2-169 |
| HP Common Lisp II User's Guide . . . . .                                    | 2-170 |
| HP Common Lisp I & II: A Comparison . . . . .                               | 2-171 |
| HP Common Lisp II Reference Manual . . . . .                                | 2-172 |
| Programming in Pascal . . . . .   | 2-173 |
| An Introduction to Programming and Problem Solving with<br>Pascal . . . . . | 2-174 |
| HP Pascal Language Reference . . . . .                                      | 2-175 |
| Using MS-DOS <sup>R</sup> on HP-UX . . . . .                                | 2-176 |
| DOS Coprocessor Software Installation Guide . . . . .                       | 2-177 |
| Using the DOS Coprocessor . . . . .   | 2-178 |
| SoftPC Installation Guide . . . . .   | 2-179 |
| SoftPC User's Guide . . . . .   | 2-180 |
| Microsoft MS-DOS <sup>R</sup> 3.3 Reference . . . . .                       | 2-181 |
| Microsoft MS-DOS <sup>R</sup> 3.3 Quick Reference . . . . .                 | 2-182 |

**Index**

## How to Use This Guide

---

### The Purpose of This Guide

*Finding HP-UX Information* is designed to help you locate information to help you work with the HP-UX operating system. Your HP-UX system includes many manuals, and it can be difficult to decide which manual to use to accomplish a particular task.

### The Structure of This Guide

There are three parts to this guide:

|                   |   |
|-------------------|---|
| Table of Contents | This lists the complete contents of the guide. Since the manual citations are the largest part of the guide, this is a good place to search for information about manuals whose names you already know. |
| Introduction      | This is Chapter 1, the section you are reading now.   |
| Manual Citations  | These are pages that describe the manuals in detail. You can locate the page of the citation you wish to read either in the Table of Contents or in the Index.  |
| Index             | The entries point to tasks listed in the manual citations.  |

### Finding Information about Tasks

HP-UX tasks are listed in the index. To find information about the task you wish to accomplish, look up the task in the index. The task-entry in the index points to a page in the manual-citation section. On that page you will find the name of the manual that will help you to accomplish the task, as well as further information about the manual.





## HP-UX Manual Citations

---

### About This Section

On the following pages you will find citations of all of the manuals that pertain to the HP-UX operating system and its associated software products. There is one manual citation on each page. The citations are divided into groups which correspond to areas of interest for HP-UX users.

Each citation consists of the following information:

- The **title** of the manual.
- A brief **summary** of the manual's purpose and contents.
- The manual's **part number**. This is the number of the manual *text*, not the binder or kit number. It is the part number which appears on the manual's title page and in the lower left corner on the back cover.
- The **spine title**. This most or all of the wording that appears on the spine of the binding that contains the manual. Note that some binder kits are intended to include several manuals.
- The **systems** to which this manual pertains.
- The **audience** for whom the manual is intended.
- The **tasks** which can be accomplished with the aid of the manual.

---

## How to Get Information About Manuals and Tasks

Here are some tips to help you to use *Finding HP-UX Information*.

### Locating Tasks

To locate the manual that can help you complete a task:

1. Turn to the index.
2. Locate the task you wish to accomplish.
3. Turn to the citation page indicated by the index entry.

### Browsing

To browse a group of manuals:

1. Turn to the table of contents.
2. Locate the manual group that interests you.

### Reading Information about a Particular Manual

To read a citation about a manual whose title you already know:

1. Turn to the table of contents.
2. Search within the groups for the manual.



---

## Installing and Administering HP-UX

## **Troubleshooting HP-UX Systems Error Diagnosis and Recovery**

The purpose of this manual is to provide HP-UX users and system administrators direction in solving problems within key areas of HP-UX. For those inexperienced in troubleshooting, an introductory chapter discusses general troubleshooting techniques.

**Part number:** 92453-90026

**Spine title:** *Troubleshooting HP-UX Systems  
Error Diagnosis and Recovery*

**Systems:** 300/800

**Audience:** Users (primarily System Administrators) who need help diagnosing the source of an HP-UX related problem

**Tasks:** Consult this document to perform these tasks:

- Locating/eliminating the causes of problems in the following areas:
  - Line Printer Spooling System Problems
  - UUCP Problems
  - Diskless Cluster Problems
  - System Boot-up Problems
  - File System Problems
  - Disk Space Problems
  - Problems with Terminals
  - System Panics

## HP-UX System Security

The HP-UX System Security manual is a supplementary reference book of procedures and guidelines essential to administering the HP-UX series 300 or 800 computer as a secure system. The manual provides detailed information on implementing HP's full range of security features, such as auditing, and refined control mechanisms for file access.

**Part number:** 92453-90029

**Spine title:** *HP-UX System Security*

**Systems:** 300/800

**Audience:** System administrators

**Tasks:** Consult this document to perform these tasks:

- Limiting `setuid` program risks on a secure system
- Looking for `setuid` and `setgid` programs
- Programming guidelines for writing `setuid` programs
- Converting to a Secure (Trusted) System
- Streamlining audit log entries
- Turning auditing on/off
- Set the audit file monitor daemon
- Set the audit log file parameters
- Selecting users to be audited
- Selecting events to be audited
- Selecting system calls to be audited
- Viewing the audit log records
- Backup and recovery on a secure system
- Shutting down a system securely
- Mounting and unmounting a file system securely
- Adding and deleting user accounts securely

- Adding and deleting group assets
- Controlling file access selectively
- Controlling administrative domains on a secure system

## **Installing Peripherals HP 9000 Series 300**

This manual describes how to add many common peripherals to HP 9000 Series 300 computer systems.

**Part number:** 97005-90002

**Spine title:** *HP 9000 Series 300  
Installing Peripherals*

**Systems:** 300

**Audience:** System installers

**Tasks:** Consult this document to perform these tasks:

- Install peripherals
- Install interface cards

## **Application Execution Environment User's Manual**

AXE, the Application Execution Environment, is a small, run-only HP-UX operating system for the Series 300. AXE includes all parts of HP-UX necessary to execute commands, to create and manage files, and to run programs. This manual provides information on using the various elements of AXE.

**Part number:** 98515-90004

**Spine title:** *Application Execution Environment User's Manual*

**Systems:** 300

**Audience:** AXE users

**Tasks:** Consult this document to perform these tasks:

- Use PAM (the Personal Applications Manager)
- Manage files
- Use the `vi` text editor
- Use HP Windows/9000
- Start up and shut down the system
- Create and maintain the AXE file system
- Add peripheral devices
- Create an AXE kernel
- Add users
- Update AXE
- Understand error messages
- Look up partitions and filesets
- Look up the syntax of system commands
- Install applications on AXE

## **HP 9000 Series 300 HP-UX Installation Manual**

This manual is used to install the HP-UX operating system on HP 9000 Series 300 computers.

**Part number:** 98594-90013

**Spine title:** *HP 9000 Series 300  
HP-UX Installation Manual*

**Systems:** 300

**Audience:** System administrators

**Tasks:** Consult this document to perform these tasks:

- Install the HP-UX operating system
- Install the Application Execution Environment
- Install the Programming Environment

## **HP-UX System Administration Tasks HP 9000 Series 300 Computers**

This manual explains how to perform system administration tasks.

**Part number:** 98594-90061

**Spine title:** *HP-UX System Administration Tasks Manual  
HP 9000 Series 300 Computers*

**Systems:** 300

**Audience:** System administrators

**Tasks:** Consult this document to perform these tasks:

- Construct and customize an HP-UX system
- Update HP-UX
- Start and stop an HP-UX system
- Managing run levels
- Manage groups, users, file systems, and clusters
- Set up and administer backups and the LP spooler



## **HP 9000 Series 300 and 800 HP-UX System Administration Concepts Manual**

This manual explains HP-UX system concepts useful to programmers, users, and system administrators.

**Part number:** 98594-90062

**Spine title:** *HP 9000 Series 300 and 800  
HP-UX System Administration Concepts Manual*

**Systems:** 300/800

**Audience:** System administrators, application developers, general users.

**Tasks:** Covers these major concept areas:

- System startup (for *administrators*)
- System shutdown (for *administrators*)
- Login (for *users, programmers, and administrators*)
- Processes (for *programmers, users, and administrators*)
- Runlevels (for *administrators*)
- Memory management (for *programmers and administrators*)
- File system (for *programmers, users, and administrators*)
- Device files (for *programmers and administrators*)
- Using HP-UX peripherals (for *programmers, users, and administrators*)
- Networking (for *users, programmers, and administrators*)
- HP-UX clusters (for *programmers and administrators*)
- System accounting (for *programmers, users, and administrators*)
- Glossary (for *programmers, users, and administrators*)

---

## Using HP-UX

## HP-UX Reference

This manual describes commands, system calls, subroutine libraries, file formats, device files, and miscellaneous features of the HP-UX operating system.

**Part number:** 09000-90013

**Spine title:** *HP-UX Reference* (two volumes)

**Systems:** 300/800

**Audience:** Experienced HP-UX users and programmers

**Tasks:** This is not a task-oriented manual. It is intended for use by users who know what they want to do and what command or feature to use in doing it. It is a reference manual that provides basic syntax and describes in detail how each feature behaves or how it can be used.

*HP-UX Reference* contains approximately 1900 pages in two volumes and includes a table of contents and an index.

## **HP-UX Concepts and Tutorials: Text Editors and Processors**

This manual describes the text editors and processors that are a basic part of HP-UX. These editors include **ed**, **ex**, **vi**, **sed**, and **awk**.

**Part number:** 97089-90022

**Spine title:** *HP-UX Concepts and Tutorials: Text Editors and Processors*

**Systems:** 300/800

**Audience:** General users

**Tasks:** Consult this document to perform these tasks:

- Learn to use the **vi** full-screen text editor
- Learn to use the **edit**, **ex**, **ed** line-oriented text editors:
- Learn to use the **sed**, non-interactive stream editor
- Learn to use the **awk** text interpreter/processor

## **HP-UX Concepts and Tutorials: Text Formatters**

This manual describes the `nroff` text formatter and the formatting macro packages, `mm` and `tbl`.

**Part number:** 97089-90032

**Spine title:** *HP-UX Concepts and Tutorials: Text Formatters*

**Systems:** 300/800

**Audience:** General users who want to use the text-formatting capabilities of HP-UX

**Tasks:** Consult this document to perform these tasks:

- Use the `nroff` typesetting language
- Use the `mm` memorandum macros for `nroff`
- Use `tbl` table processor for `nroff`

## **HP-UX Concepts and Tutorials: UUCP**

This manual describes how to use “HoneyDanBer uucp”, an HP-UX facility that transfers files among Series 300 and 800 HP-UX and UNIX systems linked by RS-232-C modem or direct connections.

**Part number:** 97089-90053

**Spine title:** *HP-UX Concepts and Tutorials: UUCP*

**Systems:** 300/800

**Audience:** Programmers, system administrators, and general users

**Tasks:** Consult this document to perform these tasks:

- Use UUCP
- Set up UUCP
- Program using UUCP routines

## **HP-UX Concepts and Tutorials: Shells and Miscellaneous Tools**

This manual covers these topics: Bourne Shell Programming, C Shell Programming, Korn Shell Programming, BC (Desk Calculator), DC (Desk Calculator), Mailx, and Vt (Virtual Terminal). Each section may have its own table of contents, appendices, or indices.

**Part number:** 97089-90062

**Spine title:** *HP-UX Concepts and Tutorials: Shells and Miscellaneous Tools*

**Systems:** 300/800

**Audience:** Beginning HP-UX programmers and general users

**Tasks:** Consult this document to perform these tasks:

- Use the UNIX shells: Bourne Shell (**sh**), Korn Shell (**ksh**) and C Shell (**cs**)
- Use the interactive calculators: **bc** and **dc**
- Use electronic mail: **mailx**
- Use the virtual terminal (**vt**) capability for communicating between Series 300 and Series 500 computers.

## **A Beginner's Guide to HP-UX**

This book introduces the fundamental concepts of HP-UX. It is designed to teach these concepts through descriptions and examples.

**Part number:** 98594-90006

**Spine title:** *A Beginner's Guide to HP-UX*

**Systems:** 300/800

**Audience:** General users

**Tasks:** Consult this document to perform these tasks:

- Log in and out of HP-UX
- Manage files and directories
- Learn basic HP-UX commands
- Send and receive mail
- Maintain HP-UX security



## **A Beginner's Guide to Using Shells**

This guide introduces the role of the shell in an HP-UX system. Concepts common to all shells (Bourne, Korn, C, and the restricted shells) are discussed, and features unique to each shell are briefly introduced.

**Part number:** 98594-90008

**Spine title:** *A Beginner's Guide to Using Shells*

**Systems:** 300/800

**Audience:** General users

**Tasks:** Consult this document to perform these tasks:

- Learn the differences among the Bourne, Korn and C Shells
- Choose a shell
- Change from one shell to another, temporarily or permanently
- Use the line-editing features of the Korn Shell
- Recalling, modifying, and re-executing commands using the command history
- Use the pathname-completion features of the Korn and C Shells
- Understand login scripts
- Modify shell login scripts

## **A Beginner's Guide to Text Editing**

This guide provides information on the **vi** editor. Basic commands for entering, modifying, and saving text are presented along with some more advanced topics, such as moving and copying text, and searching for and replacing text patterns.

**Part number:** 98594-90010

**Spine title:** *A Beginner's Guide to Text Editing*

**Systems:** 300/800

**Audience:** General users

**Tasks:** Consult this document to perform these tasks:

- Get basic information about HP-UX text editors
- Learn beginning and intermediate **vi** (pronounced “vee-eye”) editing commands
- Set up your **vi** environment

## **Finding HP-UX Information HP 9000 Series 300**

This is a catalog of all the manuals and learning products that are provided with software that runs under HP-UX on HP 9000 Series 300 computers. It includes a brief description of each document, its part number, the title on its spine, the audience for whom the document is intended, and a list of tasks that may be accomplished with the document.

**Part number:** 98594-90081

**Spine title:** *Finding HP-UX Information\HP 9000 Series 300*

**Systems:** 300

**Audience:** System administrators

**Tasks:** Consult this document to perform these tasks:

- Locate the manual or learning product needed to accomplish particular tasks in HP-UX

## Quick Reference Card for vi Editor

This manual provides a ready command reference to help you edit with the **vi** full-screen text editor.

**Part number:** 98597-90000

**Spine title:** *(no visible spine)*

**Systems:** 300/800

**Audience:** General users

**Tasks:** Consult this document to perform these tasks:

- Cursor placement in a text file
- Changing and inserting text into a file
- Global Search and replace
- Saving text and exiting a file
- Setting options to determine editor functions

## **Introducing UNIX System V**

by Rachel Morgan and Henry McGilton

This book is designed to introduce the inexperienced user to the System V release of the UNIX operating system and its documentation. More experienced users can learn how to use some of the more sophisticated programs provided on System V.

**Part number:** 98597-90620

**Spine title:** *Introducing UNIX System V*

**Systems:** 300

**Audience:** General users, system administrators, and programmers

**Tasks:** Consult this document to perform these tasks:

- Learn about UNIX
- Practice with UNIX tutorials
- Learn about text editing and formatting
- Learn the most commonly used UNIX commands
- Consult a quick reference on UNIX

---

## Database Management

## **ALLBASE/SQL Reference Manual**

This manual presents the syntax and semantics of SQL. SQL is the language used to define, access, and maintain data in an HP SQL database. The reader should be familiar with basic relational database and programming concepts.

**Part number:** 36217-90001

**Spine title:** *ALLBASE/SQL Reference Manual*

**Systems:** 300/800

**Audience:** Application programmers, database administrators, and advanced users

**Tasks:** Consult this document to perform these tasks:

- Use ALLBASE/SQL
- Use names and data types
- Use expressions and search conditions
- Use SQL commands



## **ALLBASE/ISQL Reference Manual**

This manual describes ISQL and how to use it. ISQL is a facility for executing SQL commands interactively. You can also invoke SQLUtil from ISQL. SQL is a facility for maintaining HP SQL DBEnvironments. The reader should be familiar with basic relational database concepts and have an introductory understanding of HP SQL.

**Part number:** 36217-90004

**Spine title:** *ALLBASE/ISQL Reference Manual*

**Systems:** 300/800

**Audience:** Database administrators, application programmers, and database users

**Tasks:** Consult this document to perform these tasks:

- Learn about the Interactive Structured Query Language
- Use ISQL commands
- Check ISQL and SQL syntax



## **ALLBASE/SQL Database Administration Guide**

This manual describes how to design, create, and maintain an HP SQL database. The reader should be familiar with relational database concepts and have a working knowledge of HP SQL.

**Part number:** 36217-90005

**Spine title:** *ALLBASE/SQL Database Administration Guide*

**Systems:** 300/800

**Audience:** Database administrators

**Tasks:** Consult this document to perform these tasks:

- Create the logical design for a database
- Create the physical design for a database
- Configure the DBEnvironment and arrange for its security
- Create specific database objects
- Control performance
- Backup a database and recover it in the event of data loss
- Maintain a database
- Use the system catalogue

## **ALLBASE/SQL Message Manual**

This manual explains the causes of warning and error conditions which may occur during use of SQL, ISQL, or the preprocessors. It also presents actions to be taken in response to these warning and error conditions.

**Part number:** 36217-90009

**Spine title:** *ALLBASE/SQL Message Manual*

**Systems:** 300/800

**Audience:** Application programmers, database administrators and database users

**Tasks:** Consult this document to perform these tasks:

- Understand HP SQL warnings and error messages

## **ALLBASE/SQL FORTRAN Application Programming Guide**

This manual describes how to write a FORTRAN program that accesses an HP DBEnvironment. It presumes the reader already has a working knowledge of FORTRAN and is familiar with the information in the *SQL Reference Manual* and with the HP-UX operating system.

**Part number:** 36217-90013

**Spine title:** *ALLBASE/SQL FORTRAN Application Programming Guide*

**Systems:** 300/800

**Audience:** FORTRAN application programmers

**Tasks:** Consult this document to perform these tasks:

- Use the preprocessor
- Embed SQL Commands
- Use host variables
- Perform run time status checking
- Perform data manipulation
- Perform sequential and BULK table processing
- Perform dynamic operations
- Perform time transactions

## **ALLBASE/SQL C Application Programming Guide**

This manual describes how to write a C program that accesses an HP SQL DBEnvironment. It presumes the reader already has a working knowledge of C and is familiar with the information in the *SQL Reference Manual* and with the HP-UX operating system.

**Part number:** 36217-90014

**Spine title:** *ALLBASE/SQL C Application Programming Guide*

**Systems:** 300/800

**Audience:** C programmers

**Tasks:** Consult this document to perform these tasks:

- Use the HP SQL C Preprocessor
- Embed SQL Commands
- Use host variables
- Perform run time status checking
- Perform data manipulation
- Perform sequential and BULK table processing
- Perform dynamic operations
- Perform time transactions

## **ALLBASE/NET User's Guide**

This user's guide describes how to install and use ALLBASE/NET.

**Part number:** 36217-90093

**Spine title:** *ALLBASE/NET User's Guide*

**Systems:** 300/800

**Audience:** System administrators and database users

**Tasks:** Consult this document to perform these tasks:

- Set up an alias DBEnvironment

## **ALLBASE/SQL Pascal Application Programming Guide**

This manual describes how to write a Pascal program that accesses an HP SQL DBEnvironment. It presumes the reader already has a working knowledge of Pascal and is familiar with the information in the *SQL Reference Manual* and with the HP-UX operating system.

**Part number:** 79725-90010

**Spine title:** *ALLBASE/SQL Pascal Application Programming Guide*

**Systems:** 300

**Audience:** Database programmers

**Tasks:** Consult this document to perform these tasks:

- Use the HP SQL Pascal Preprocessor
- Embed SQL commands
- Use host variables
- Perform run time status checking
- Perform data manipulation
- Perform sequential and BULK table processing
- Perform dynamic operations

## **HP ALLBASE/4GL Developer Administration Manual**

This manual is written for HP ALLBASE/4GL system administrators. It describes the centralized administration facilities of HP ALLBASE/4GL.

**Part number:** 92440-64001

**Spine title:** *HP ALLBASE/4GL Developer Administration Manual*

**Systems:** 300/800

**Audience:** Database developers and system administrators

**Tasks:** Consult this document to perform these tasks:

- Perform system administration for the developer environment
- Define system specifications
- Define system security
- Disaster recovery

## **HP ALLBASE/4GL Developer Self-Paced Training Guide**

This guide is a tutorial introduction to developing applications with HP ALLBASE/4GL. The guide assumes that you familiar with a conventional programming language.

**Part number:** 92440-64003

**Spine title:** *HP ALLBASE/4GL Developer Self-Paced Training Guide*

**Systems:** 300/800

**Audience:** Database developers

**Tasks:** Consult this document to perform these tasks:

- Use self-paced training tutorials for new HP ALLBASE/4GL application developers



## **HP ALLBASE/4GL Developer Reference Manual**

This two-volume manual is a reference for developers who are familiar with the basic terminology and concepts of HP ALLBASE/4GL.

**Part number:** 92440-64002 (*volume one*)  
92440-64004 (*volume two*)  
92440-64005 (*both volumes*)

**Spine title:** *HP ALLBASE/4GL Developer Reference Manual*

**Systems:** 300/800

**Audience:** Database developers

**Tasks:** Consult this document to perform these tasks:

- Consult a detailed reference manual for HP ALLBASE/4GL application developers

## **HP ALLBASE/4GL Installation Guide**

This guide describes the procedure for installing HP ALLBASE/4GL Developer systems and HP ALLBASE/4GL Run-Time environments.

**Part number:** 92440-90014

**Spine title:** *HP ALLBASE/4GL Installation Guide*

**Systems:** 300/800

**Audience:** Database administrators and system administrators

**Tasks:** Consult this document to perform these tasks:

- Install HP ALLBASE/4GL

## **HP ALLBASE/4GL Developer Quick Reference Guide**

This guide is a quick reference for application developers who are familiar with HP ALLBASE/4GL.

**Part number:** 92440-90015

**Spine title:** *HP ALLBASE/4GL Developer Quick Reference Guide*

**Systems:** 300/800

**Audience:** Database developers

**Tasks:** Consult this document to perform these tasks:

- Consult a summary of logic commands
- Look up screen processing logic
- Look up report processing logic
- Look up referencing rules
- Look up error codes

## **HP ALLBASE/4GL Run-Time Administration Manual**

This manual is written for HP ALLBASE/4GL Run-Time system administrators. It describes the administration facilities in the HP ALLBASE/4GL Run-Time Environment.

**Part number:** 92441-64001

**Spine title:** *HP ALLBASE/4GL Run-Time Administration Manual*

**Systems:** 300/800

**Audience:** Database developers and system administrators

**Tasks:** Consult this document to perform these tasks:

- Perform system administration for the HP ALLBASE/4GL Run-Time Environment
- Define system specifications
- Define system security
- Disaster recovery

## **HP ALLBASE/QUERY User Guide**

This guide provides a tutorial introduction to HP ALLBASE/QUERY. It also includes reference information about all HP ALLBASE/QUERY screens and about the HP ALLBASE/QUERY command language.

**Part number:** 92534-90001

**Spine title:** *HP ALLBASE/QUERY User Guide*

**Systems:** 300/800

**Audience:** Database users

**Tasks:** Consult this document to perform these tasks:

- Use EZAccess
- Use SQLAccess
- Create reports with EZReport
- Learn about advanced HP ALLBASE/QUERY functions
- Consult a detailed reference for HP ALLBASE/QUERY screens and commands.

## **HP ALLBASE/QUERY Installation Guide**

This guide describes the procedure for installing HP ALLBASE/QUERY.

**Part number:** 92534-90002

**Spine title:** *HP ALLBASE/QUERY Installation Guide*

**Systems:** 300/800

**Audience:** Database administrators and system administrators

**Tasks:** Consult this document to perform these tasks:

- Install HP ALLBASE/QUERY

## **HP Ada/SQL Reference Manual**

This manual describes HP Ada/SQL, an interface to HP SQL consisting of four library units, packages containing data structures, data types, functions, and procedures. The Ada interface allows programmers to write programs in pure Ada with no requirements for working around the language through either untyped operations or interface procedures written in another language.

**Part number:** 98889-90002

**Spine title:** *HP Ada/SQL Reference Manual*

**Systems:** 300

**Audience:** Ada programmers

**Tasks:** Consult this document to perform these tasks:

- Use HP SQL through the Ada interface to the HP Ada/SQL DBEnvironment

---

## Graphics



## **Starbase Driver Development Guide**

This manual describes how to develop device drivers for a Series 300 Starbase graphics library.

**Part number:** 97009-90000

**Spine title:** *Starbase Driver Development Guide*

**Systems:** 300

**Audience:** Graphics programmers

**Tasks:** Consult this document to perform these tasks:

- Write device drivers for Starbase

## **Device-Independent Graphics Library Programmer's Manual**

This manual provides Device-Independent Graphics Library (DGL) tutorial and reference information. Application programmers can use it to learn the features of DGL as well as for reference material as they write their application programs.

**Part number:** 97084-90010

**Spine title:** *Device-Independent Graphics Library Programmer's Manual*

**Systems:** 300/800

**Audience:** Graphics programmers

**Tasks:** Consult this document to perform these tasks:

- Program with Device-independent Graphics Library routines

## **DGL/AGP Device Drivers Manual**

This manual outlines the usage of device drivers for the Device-Independent Graphics Library and the Advanced Graphics Package.

**Part number:** 97084-90028

**Spine title:** *DGL/AGP Device Drivers*

**Systems:** 300/800

**Audience:** Graphics programmers

**Tasks:** Consult this document to perform these tasks:

- Program with graphics drivers



## **Advanced Graphics Package Programmer's Manual**

This manual contains both generic tutorial information concerning Advanced Graphics Package (AGP) and supplemental information which is specific to the HP-UX operating system. This manual also provides AGP subroutine user's and reference information. It contains a user's section and an alphabetical collection of reference pages of the subroutines that make up the Advanced Graphics Package.

**Part number:** 97085-90012

**Spine title:** *Advanced Graphics Package Programmer's Manual*

**Systems:** 300/800

**Audience:** Graphics programmers

**Tasks:** Consult this document to perform these tasks:

- Program with the Advanced Graphics Package

## **Programming with the Starbase Integer Interface**

This is the reference needed to program with the Starbase Integer Interface.

**Part number:** 98556-90001

**Spine title:** (no spine)

**Systems:** 300/800

**Audience:** Graphics programmers

**Tasks:** Consult this document to perform these tasks:

- Program with the Starbase Integer Interface

## **Starbase Programming with X11**

This manual is intended to help programmers develop Starbase programs that run in an X11 window. Also included is information to help the programmer move graphic applications from other window environments.

**Part number:** 98592-90000

**Spine title:** *Starbase Programming with X11*

**Systems:** 300/800

**Audience:** Starbase graphics programmers

**Tasks:** Consult this document to perform these tasks:

- Create Starbase graphics programs in X11

## **Starbase Device Drivers Library Manual**

This two-volume manual describes the device-dependent features of all the supported HP graphics peripherals.

**Part number:** 98592-90018

**Spine title:** *Starbase Device Drivers Library Manual*

**Systems:** 300/800

**Audience:** Experienced graphics programmers

**Tasks:** Consult this document to perform these tasks:

- Program with Starbase device drivers

## **Starbase C Pocket Reference**

This compact reference lists the Starbase calls as used in a C program. It also includes a list of procedure names and parameters.

**Part number:** 98592-90031

**Spine title:** (no spine)

**Systems:** 300/800

**Audience:** Graphics programmers

**Tasks:** Consult this document to perform these tasks:

- quick-reference for calling Starbase routines from C



## **Starbase FORTRAN Pocket Reference**

This compact reference lists the Starbase calls as used in a FORTRAN program. It also includes a list of procedure names and parameters.

**Part number:** 98592-90041

**Spine title:** (no spine)

**Systems:** 300/800

**Audience:** Graphics programmers

**Tasks:** Consult this document to perform these tasks:

- Consult a quick-reference for calling Starbase routines from FORTRAN/9000

## **A Beginner's Guide to Using Starbase**

This manual presents a few of the many Starbase routine that are used to draw graphics primitives (such as lines, rectangles, circles, ellipses, and polygins) on an output device. The user learns to create simple graphics programs by using the primitives in gradually more complex combinations.

**Part number:** 98592-90046

**Spine title:** *A Beginner's Guide to Using Starbase*

**Systems:** 300/800

**Audience:** Programmers who are learning to use Starbase graphics

**Tasks:** Consult this document to perform these tasks:

- Learn about Starbase
- Start Starbase
- Use Move and Draw
- Use Polygons
- Use Rectangles
- Fill a picture with a pattern or a color
- Put text in the picture
- Use color
- Use the "arc" routine

## **Starbase Pascal Pocket Reference**

This compact reference lists the Starbase calls as used in a Pascal program. It also includes a list of procedure names and parameters.

**Part number:** 98592-90051

**Spine title:** (no spine)

**Systems:** 300/800

**Audience:** Graphics programmers

**Tasks:** Consult this document to perform these tasks:

- Consult a quick reference for calling Starbase routines from Pascal

## **Starbase Reference**

This manual is a companion volume to the Starbase Graphics Techniques. This manual contains an alphabetized list of Starbase Graphics routines.

**Part number:** 98592-90065

**Spine title:** *Starbase Reference*

**Systems:** 300/800

**Audience:** Experienced graphics programmers

**Tasks:** Consult this document to perform these tasks:

- Program with routines from the Starbase graphics library

## **Starbase Graphics Techniques**

This three-volume tutorial begins with a low-level program which draws a line. It gives a progressive example of how to draw a graph. Later chapters present more advanced topics.

**Part number:** 98592-90078

**Spine title:** *Starbase Graphics Techniques*

**Systems:** 300/800

**Audience:** Experienced programmers with little or no graphics experience.

**Tasks:** Consult this document to perform these tasks:

- Learning how to create graphics programs in Starbase

## **Fast Alpha/Font Manager Programmer's Manual**

This manual presents information that programmers need to place text on graphics screens. It may be used within Starbase, Windows/9000, and HP's implementation of the X Window System (version 11).

**Part number:** 98592-90092

**Spine title:** *Fast Alpha/Font Manager Programmer's Manual*

**Systems:** 300/800

**Audience:** Graphics programmers

**Tasks:** Consult this document to perform these tasks:

- Use Fast Alpha and Font Manager library routines

## **HP-GKS User's Guide**

The Hewlett-Packard Graphics Kernel System (HP-GKS) is a subroutine library for 2-dimensional computer graphics programming. HP-GKS is implemented on top of the HP Starbase Graphics Library to take advantage of the Device Drivers and special features of the Starbase System. Knowledge of ANSI GKS, as described in the *ANSI GKS Specification* (ANS-X3.124-1985), is a prerequisite for using this manual. This manual explains the specifics of how Hewlett-Packard implemented those parts of GKS that required implementation decisions.

**Part number:** 98672-90001

**Spine title:** *HP-GKS User's Guide*

**Systems:** 300/800

**Audience:** Beginning graphics programmers

**Tasks:** Consult this document to perform these tasks:

- Program with Graphics Kernel System routines

## HP-GKS Device Drivers Library

This manual outlines the capabilities and usage of device drivers for the Hewlett-Packard Graphics Kernel System (HP-GKS). This manual is organized around device drivers. The *ANSI GKS Specification* contains the standard specification for GKS. The *HP-GKS User's Guide* contains information specific to the Hewlett-Packard implementation. Knowledge of GKS and HP-GKS as described in these manuals is a prerequisite for using this manual.

**Part number:** 98672-90013

**Spine title:** *HP-GKS Device Drivers Library*

**Systems:** 300/800

**Audience:** Graphics programmers

**Tasks:** Consult this document to perform these tasks:

- Program with Graphics Kernel System device drivers



## **HP-GKS FORTRAN Pocket Reference**

This compact reference lists the HP-GKS calls as used in a FORTRAN program. It also includes a list of procedure names and parameters.

**Part number:** 98672-90040

**Spine title:** (no spine)

**Systems:** 300/800

**Audience:** FORTRAN graphics programmers

**Tasks:** Consult this document to perform these tasks:

- Consult a reference for information about FORTRAN

## **ANSI Graphics Kernel System (GKS) Functional Description**

This ANSI standard is the entry-level manual to programming in HP-GKS.

**Part number:** 98672-90602

**Spine title:** *ANSI Graphics Kernel System (GKS) Functional Description*

**Systems:** 300/800

**Audience:** Graphics programmers

**Tasks:** Consult this document to perform these tasks:

- Consult the ANSI standard description for GKS

## Starbase Display List Programmer's Manual

This manual is for the graphics programmer who will be using the Starbase Display List subsystem. This subsystem is referred to as the “display list” or the “Starbase Display List” throughout the manual.

**Part number:** 98674-90002

**Spine title:** *Starbase Display List Programmer's Manual*

**Systems:** 300/800

**Audience:** Graphics programmers

**Tasks:** Consult this document to perform these tasks:

- Program with the Starbase display list handler



## **Turbo SRX Graphics Demo Guide**

This document provides the directions necessary to install and run graphics demonstration programs on the Turbo SRX.

**Part number:** 98730-90013

**Spine title:** (no spine)

**Systems:** 300/800

**Audience:** Graphics programmers

**Tasks:** Consult this document to perform these tasks:

- Install and run demonstration programs on the Turbo SRX

## **Starbase Radiosity and Ray Tracing Programmer's Manual**

This manual explains the Starbase radiosity and ray tracing programs, which allow you to produce extremely realistic images.

**Part number:** 98885-90000

**Spine title:** *Starbase Radiosity and Ray Tracing Programmer's Manual*

**Systems:** 300

**Audience:** Programmers in advanced graphics imaging

**Tasks:** Consult this document to perform these tasks:

- Add shadows and shading for directional effects of light
- Add shading for diffusely reflecting surfaces

## **Ada/GKS Binding Reference Manual**

This manual provides information on the use of the HP Ada/GKS binding product. Graphical Kernel System (GKS) is an international standard for the functions of a computer graphics system.

**Part number:** 98889-90001

**Spine title:** *Ada/GKS Binding Reference Manual*

**Systems:** 300

**Audience:** Ada programmers

**Tasks:** Consult this document to perform these tasks:

- Learn to invoke GKS functions from Ada programs

## **Ada/Starbase Binding Reference Manual**

This manual provides information on the use of the HP Ada/Starbase binding product. The Starbase Graphics Library consists of procedures to generate graphic text and pictures.

**Part number:** 98889-90003

**Spine title:** *Ada/Starbase Binding Reference Manual*

**Systems:** 300

**Audience:** Ada programmers

**Tasks:** Consult this document to perform these tasks:

- Learn to compile and link Ada/Starbase programs

---

## Windowed Display Systems



## **Programming with the Xrlib User Interface Toolbox**

This manual is for programmers who wish to port Xrlib applications from the X Window System, version 10 to the X Window System, version 11.

**Part number:** 5090-0004

**Spine title:** *Programming with the Xrlib User Interface Toolbox*

**Systems:** 300/800

**Audience:** X Window System programmers

**Tasks:** Consult this document to perform these tasks:

- Use intrinsics
- Use field editors
- Create dialogs
- Build a field editor
- Port X10 Xrlib applications to X11
- Create FORTRAN bindings

## **Programming with the X Window System**

This manual is for programmers who intend to use the X Window System (version 10) and development tools to create application programs.

**Part number:** 82320-90005

**Spine title:** *Programming with the X Window System*

**Systems:** 300/800 (X10 only)

**Audience:** X Window System programmers

**Tasks:** Consult this document to perform these tasks:

- Program with the X Window System
- Consult the X Window Library routine pages for the *HP-UX Reference*

## Getting Started With the X Window System

This manual provides information about installing and using the X10 version of the X Window System.

**Part number:** 82320-90006

**Spine title:** *Getting Started With the X Window System*

**Systems:** 300 (X10 only)

**Audience:** X Window System users

**Tasks:** Consult this document to perform these tasks:

- Install the X Window System (version 10)
- Use the X Window System Version 10)
- Consult the X command pages for the *HP-UX Reference*

## **Term0 Reference Manual**

This document describes the feature set and programming methods for HP level 0 terminals (Term0).

**Part number:** 82865-90002

**Spine title:** *Term0 Reference Manual*

**Systems:** 300

**Audience:** HP Windows/9000 programmers

**Tasks:** Consult this document to perform these tasks:

- Look up Term0 definition, special characters, escape sequences

## HP Windows/9000 Documentation

This constitutes both the user's and programmer's manuals for the HP Windows/9000 product.

**Part number:** 97069-90003

**Spine title:** *HP Windows/9000 Documentation*

**Systems:** 300

**Audience:** HP Windows/9000 users and programmers

**Tasks:** Consult this document to perform these tasks:

- in the *HP Windows/9000 User's Manual*:
  - Interact with HP Windows/9000
  - Look up HP Windows/9000 commands and environment variables
  - Learn how to use shared memory
  - Learn window limitations
- in the *HP Windows/9000 Programmer's Manual*:
  - Program with Windows/9000
  - Study example programs

## **HP Windows/9000 Reference**

This manual contains an alphabetical listing of HP Windows/9000 routines.

**Part number:** 97069-90023

**Spine title:** *HP Windows/9000 Reference*

**Systems:** 300

**Audience:** HP Windows/9000 users and programmers

**Tasks:** Consult this document to perform these tasks:

- Look up descriptions of window commands and library routines

## **A Beginner's Guide to the X Window System**

This guide introduces the X Window System version 11 (X11), a versatile window environment designed to simplify users' interactions with the computer. The essentials of controlling the X11 environment are presented in a tutorial format.

**Part number:** 98594-90002

**Spine title:** *A Beginner's Guide to the X Window System*

**Systems:** 300/800

**Audience:** General users who are learning to use X Window

**Tasks:** Consult this document to perform these tasks:

- Learn about the X Window System
- Learn basic X Window management functions
- Use X Window client programs
- Organize the X environment
- Study example configuration files

## **Programming with the HP X Widgets and the Xt Intrinsic**

The HP X Widget system provides the base upon which programmers may build a wide variety of application environments. Based on the R2 X Toolkit Intrinsic, it provides quick and easy access to the lower levels of the X Window System. This manual explains the individual widgets and shows how to create and use these widgets in applications.

**Part number:** 98794-90000

**Spine title:** *Programming with the HP X Widgets and the Xt Intrinsic*

**Systems:** 300/800

**Audience:** X Window System programmers

**Tasks:** Consult this document to perform these tasks:

- Program with the HP R2 X11 Widgets
- Program with the X Window System R2 Xt Intrinsic library
- Consult the HP Widgets man pages



## Using the X Window System

This manual describes how users can set up, control, and customize their X Window environments.

**Part number:** 98794-90001

**Spine title:** *Using the X Window System*

**Systems:** 300/800

**Audience:** X Window System users

**Tasks:** Consult this document to perform these tasks:

- Use the X Window System
- Run the X clients
- Perform user-level customization
- Perform system-level customization

## **Programming with Xlib**

This manual is a reference guide to the low-level C language interface to the X Window system protocol. It assumes a basic understanding of a graphics window system and of the C programming language.

**Part number:** 98794-90002

**Spine title:** *Programming with Xlib*

**Systems:** 300/800

**Audience:** X Window System programmers

**Tasks:** Consult this document to perform these tasks:

- Program with the X Window System
- Create FORTRAN bindings
- Consult the Xlib routine pages for the *HP-UX Reference (3X)*

## **X Window System C Quick Reference Guide**

This manual provides lists of X Window System functions and parameters without explanatory text.

**Part number:** 98794-90003

**Spine title:** *X Window System C Quick Reference Guide*

**Systems:** 300/800

**Audience:** X Window System programmers

**Tasks:** Consult this document to perform these tasks:

- Consult an alphabetic listing of the commands and widgets described in:
  - *Programming with the Xt Intrinsic*
  - *HP OSF/Motif Programmer's Guide*
  - *HP OSF/Motif Programmer's Reference*
  - *Programming with Xlib*

## **Installing and Configuring the X Window System**

This manual describes how the X Window System may be configured to meet specific user needs.

**Part number:** 98794-90004

**Spine title:** *Installing and Configuring the X Window System*

**Systems:** 300/800

**Audience:** X Window System users

**Tasks:** Consult this document to perform these tasks:

- Complete the X Window System installation
- Set system defaults
- Customize the startup file
- Arrange for remote access
- Arrange for display on one or more screens
- Change the color database
- Add input devices
- Arrange to use the keyboard instead of the mouse
- Customize the keyboard
- Display native-language character sets
- Correct installation problems

## **HP OSF/Motif Programmer's Guide**

The HP OSF/Motif widget system provides the base upon which programmers may build a wide variety of application environments.

**Part number:** 98794-90005

**Spine title:** *HP OSF/Motif Programmer's Guide*

**Systems:** 300/800

**Audience:** HP OSF/Motif programmers

**Tasks:** Consult this document to perform these tasks:

- Program with HP OSF/Motif widgets

## HP OSF/Motif Programmer's Reference

This manual provides the man pages for the HP OSF/Motif functions for the X Window System.

**Part number:** 98794-90006

**Spine title:** *HP OSF/Motif Programmer's Reference*

**Systems:** 300/800

**Audience:** HP OSF/Motif programmers

**Tasks:** Consult this document to perform these tasks:

- Examine the following sets of man pages:
  - HP OSF/Motif window manager
  - HP OSF/Motif widgets
  - HP OSF/Motif intrinsics

## **HP OSF/Motif Style Guide**

This manual contains information needed to design an application, widget, or window manager so that it is consistent in appearance and behavior with the HP OSF/Motif standard.

**Part number:** 98794-90007

**Spine title:** *HP OSF/Motif Style Guide*

**Systems:** 300/800

**Audience:** HP OSF/Motif programmers

**Tasks:** Consult this document to perform these tasks:

- Learn HP OSF/Motif standards

## **Programming with the Xt Intrinsic**

The R3 Xt Intrinsic provide the base mechanisms necessary to build a wide variety of widget sets and application environments.

**Part number:** 98794-90008

**Spine title:** *Programming with the Xt Intrinsic*

**Systems:** 300/800

**Audience:** X Window System programmers

**Tasks:** Consult this document to perform these tasks:

- Program with the R3 Xt Intrinsic Library
- Consult the R3 Xt Intrinsic man pages



## **HP Windows/9000 to X Window System Conversion Guide**

This manual provides information about making the transition from the HP Windows/9000 environment to the X Window System.

**Part number:** 98794-90075

**Spine title:** *HP Windows/9000 to X Window System Conversion Guide*

**Systems:** 300/800

**Audience:** X Window System programmers

**Tasks:** Consult this document to perform these tasks:

- Convert programs from Windows/9000 to the X Window System



---

## Networking

## **HP-UX SNA3270 and Gateway/SNA3270 Reference Manual**

This manual describes the HP-UX SNA3270 and HP-UX Gateway/SNA3270 products for the HP 9000 Series 300 and Series 800 systems. The manual provides the information to install, configure, and use these SNA3270 products and to perform some basic troubleshooting of the products.

**Part number:** 36590-90000

**Spine title:** *HP-UX SNA3270 and Gateway/SNA3270 Reference Manual*

**Systems:** 300/800

**Audience:** Programmers and system administrators

**Tasks:** Consult this document to perform these tasks:

- Install SNA3270
- Use SNA3270
- Transfer files via SNA3270
- Troubleshoot SNA3270

## **HP-UX SNALink and Gateway/SNALink Reference Manual**

This manual describes the HP-UX SNALink and HP-UX Gateway/SNALink products for the HP 9000 Series 300 and Series 800 systems. The manual provides the information to install, configure, and use these SNALink products and to perform some basic troubleshooting of the products.

**Part number:** 36592-90000

**Spine title:** *HP-UX SNALink and Gateway/SNALink Reference Manual*

**Systems:** 300/800

**Audience:** Programmers and system administrators

**Tasks:** Consult this document to perform these tasks:

- Install SNALink
- Use SNALink
- Transfer files via SNALink
- Troubleshoot SNALink

## HP-UX SNA/9000 Manual Reference Pages

This manual contains the man pages related to the following products.

- HP-UX SNA3270 and Gateway/SNA3270
- HP-UX SNA3770 and Gateway/SNA3770
- HP-UX SNALink and Gateway/SNALink
- HP-UX SNA3179G and Gateway/SNA3179G

**Part number:** 36592-90003

**Spine title:** *HP-UX SNA/9000 Manual Reference Pages*

**Systems:** 300/800

**Audience:** End users and SNA system administrators

**Tasks:** Consult this document to perform these tasks:

- Look up the names and syntax of commands for SNA/9000-related products

## **X.25/9000 Programmer's Guide**

This manual describes HP's programmatic access to X.25/9000 for X.25 Level 3 via the Berkeley IPC facility. The X.25/9000 product allows you to connect HP 9000 computers to packet-switching networks which conform to CCITT X.25 Recommendations.

**Part number:** 36940-90001

**Spine title:** *X.25/9000 Programmer's Guide*

**Systems:** 300/800

**Audience:** Network managers and programmers

**Tasks:** Consult this document to perform these tasks:

- Review the basics of Berkeley IPC
- Create applications using Berkeley IPC to access X.25/9000 Level 3

## **Installing and Administering X.25/9000**

This manual describes how to install and administer the X.25/9000 product. the X.25/9000 product allow you to connect HP 9000 computers to packet-switching networks which conform to CCITT X.25 Recommendations.

**Part number:** 36940-90004

**Spine title:** *Installing and Administering X.25/9000*

**Systems:** 300/800

**Audience:** Network managers

**Tasks:** Consult this document to perform these tasks:

- Load and configure X.25/9000 software
- Initialize and shut down X.25/9000

## **Troubleshooting X.25/9000**

This manual describes how to troubleshoot the X.25/9000 product. It includes all error, logging, and diagnostic messages. The X.25 product allows you to connect HP 9000 computers to packet-switching networks which conform to CCITT X.25 Recommendations.

**Part number:** 36940-90005

**Spine title:** *Troubleshooting X.25/9000*

**Systems:** 300/800

**Audience:** Network managers and programmers

**Tasks:** Consult this document to perform these tasks:

- Troubleshoot common X.25 problems
- Use network logging
- Use network tracing



## **RJE (Remote Job Entry) User's Manual**

This manual helps users perform remote job entry tasks with the RJE product.

**Part number:** 50966-90000

**Spine title:** *RJE (Remote Job Entry) User's Manual*

**Systems:** 300

**Audience:** Users who perform remote job entry

**Tasks:** Consult this document to perform these tasks:

- Perform RJE system administration
- Use RJE
- Consult the RJE reference pages
- Troubleshoot RJE

## **HP-UX SNA3770 and Gateway/SNA3770 Reference Manual**

This manual describes the HP-UX SNA3770 and HP-UX Gateway/SNA3770 products for the HP 9000 Series 300 and Series 800 systems. The manual provides the information to install, configure, and use these SNA3770 products and to perform some basic troubleshooting of the products.

**Part number:** 98184-90000

**Spine title:** *HP-UX SNA3770 and Gateway/SNA3770 Reference Manual*

**Systems:** 300/800

**Audience:** Programmers and system administrators

**Tasks:** Consult this document to perform these tasks:

- Install SNA3770
- Use SNA3770
- Transfer files via SNA3770
- Troubleshoot SNA3770

## Networking Reference Pages

This is a kit which contains a binder, a spine, a front cover, and a back cover. This kit may be used to hold the following reference pages:

- *X.25/9000 Reference Pages* (part number 98194-90014)
- *ARPA/Berkeley Reference Pages* (part number B1014-90002)
- *Network Services Reference Pages* (part number B1012-90002)
- *NFS Services Reference Pages* (part number B1013-90003)

This kit may be used to hold all the reference pages for the networking products available for HP-UX.

**Part number:** 98194-60014

**Spine title:** *Networking Reference*

**Systems:** 300/800

**Audience:** LAN programmers and network managers

**Tasks:** See the entries for *X.25/9000 Reference Pages*, *ARPA/Berkeley Reference Pages*, *Network Services Reference Pages*, and *NFS Services Reference Pages*.

## **LLA Programmer's Guide**

This manual describes HP's Link Level Access (LLA) facility. LLA is a program development tool that allows direct access to the LAN/9000 link level driver.

**Part number:** 98194-90011

**Spine title:** *LLA Programmer's Guide*

**Systems:** 300/800

**Audience:** LAN programmers

**Tasks:** Consult this document to perform these tasks:

- Learn about the Link Level Access (LLA) interface
- Create applications that use LLA
- Study programming examples

## **Berkeley IPC Programmer's Guide**

This manual describes HP' implementation of the Berkeley Software Distribution Interprocess Communication (IPC) facility. Berkeley IPC is a program development tool for process-to-process communication in the UNIX environment.

**Part number:** 98194-90012

**Spine title:** *Berkeley IPC Programmer's Guide*

**Systems:** 300/800

**Audience:** LAN/X.25 programmers

**Tasks:** Consult this document to perform these tasks:

- Learn about the Berkeley IPC interface
- Create applications using the Berkeley IPC
- Study program examples

## **NetIPC Programmer's Guide**

This manual describes HP's Network Interprocess Communication (NetIPC) facility. NetIPC is a program development tool for process-to-process communication between HP computers.

**Part number:** 98194-90013

**Spine title:** *NetIPC Programmer's Guide*

**Systems:** 300/800

**Audience:** LAN/X.25 programmers

**Tasks:** Consult this document to perform these tasks:

- Learn about the NetIPC interface
- Create distributed applications using NetIPC
- Study program examples

## LAN/X.25 Reference Pages

These are the manual reference pages for the LAN/9000 and X.25/9000 network links. They describe link management, logging, tracing, troubleshooting, and use of the NetIPC (network interprocess communication), and BSD IPC (Berkeley interprocess communication), and LLA (Link Level Access) programmatic interfaces.

**Part number:** 98194-90014

**Spine title:** *Networking Reference Pages*

**Systems:** 300/800

**Audience:** Network managers, programmers, and users

**Tasks:** Consult this document to perform these tasks:

- Check syntax and action of LAN commands, system calls, library routines and files
- Check syntax and action of X.25 commands, system calls, library routines and files

## **Installing and Administering LAN/9000 Series 300**

This manual describes how to install and administer the LAN/9000 series 300 product. The LAN/9000 product allows you to connect an HP 9000 Series 300 computer to an IEEE 802.3 or Ethernet local area network.

**Part number:** 98194-90015

**Spine title:** *Installing LAN/9000 Series 300*

**Systems:** 300

**Audience:** Network managers

**Tasks:** Consult this document to perform these tasks:

- Load and configure LAN software
- Maintain LAN software
- Troubleshoot the LAN
- Use network logging
- Use network tracing



## **SRM Access Utilities for HP-UX**

This manual serves as a guide to the Shared Resource Manager (SRM).

**Part number:** 98693-90000

**Spine title:** *SRM Access Utilities for HP-UX*

**Systems:** 300

**Audience:** SRM users

**Tasks:** Consult this document to perform these tasks:

- Install SRM
- Look up HP-UX commands for accessing SRM
- Consult the SRM reference pages



## **HP-UX SNA3179G and Gateway/SNA3179G Reference Manual**

This manual describes the HP-UX SNA3179G and HP-UX Gateway/SNA3179G products for the HP 9000 Series 300 and Series 800 systems. The manual provides the information to install, configure, and use these SNA3179G products and to perform some basic troubleshooting of the products.

**Part number:** B1001-90000

**Spine title:** *HP-UX SNA3179G and Gateway/SNA3179G Reference Manual*

**Systems:** 300/800

**Audience:** Programmers and system administrators

**Tasks:** Consult this document to perform these tasks:

- Install SNA3179G
- Use SNA3179G
- Transfer files via SNA3179G
- Troubleshoot SNA3179G

## Using Network Services

This manual contains introductory information on the Network Services and chapters explaining how to use the Network Services (NS).

**Part number:** B1012-90000

**Spine title:** *Using Network Services*

**Systems:** 300/800

**Audience:** NS programmers and users

**Tasks:** Consult this document to perform these tasks:

- Perform network file transfers
- Access files on a remote host
- Log onto an HP 3000 with vt3k (a Network Service application)
- Reference the ASCII character set
- Interpret NS error messages
- Understand the Network Services/HP9000 migration

## **Installing and Administering Network Services**

This manual is for network managers of the HP 9000 computer systems using the NS product. This manual explains how to install, configure and maintain the NS product software.

**Part number:** B1012-90001

**Spine title:** *Installing and Administering Network Services*

**Systems:** 300/800

**Audience:** NS network managers

**Tasks:** Consult this document to perform these tasks:

- Install and configure Network Services (NS)
- Maintain Network Services (NS)
- Troubleshoot Network Services (NS)
- Install, configure, and troubleshoot vt3k (a Network Service application allowing you to log onto an HP 3000)

## Network Services Reference Pages

This manual is a printed copy of the online NS manual reference pages.

**Part number:** B1012-90002

**Spine title:** (no spine)  
Tabbed *Network Services Reference Pages* are in the *Networking Reference* manual.

**Systems:** 300/800

**Audience:** Network managers and all programmers

**Tasks:** Consult this document to perform these tasks:

- Look up references for HP-UX networking commands, system calls, libraries, and file formats for HP's Network Services

## Networking Overview

This booklet describes the Network Services (NS), ARPA Services, X.25, X.400, and NFS Services products available for HP 9000 computers.

**Part number:** B1012-90003

**Spine title:** *(no visible spine)*

**Systems:** 300/800

**Audience:** Network users

**Tasks:** Consult this document to perform these tasks:

- Learn about networks, network architecture, and the OSI model
- Learn about Network Services, ARPA Services, X.25, X.400, and NFS Services
- Learn about the contents of the NS, ARPA, X.25, X.400, and NFS services manuals

## Using NFS Services

This manual describes the NFS services and explains common NFS commands. It also contains reference information on NFS Services vs. local HP-UX and migrating from RFA to NFS.

**Part number:** B1013-90000

**Spine title:** *Using NFS Services*

**Systems:** 300/800

**Audience:** NFS programmers and users

**Tasks:** Consult this document to perform these tasks:

- Use NFS in an HP-UX cluster environment
- Understand the differences between HP NFS services vs. local HP-UX
- Migrate from RFA to NFS
- Using the RPC Program Compiler
- Using the Lock Manager
- Use the Remote Execution Service (REX)
- Use named pipes/device files
- Understand interactions with HP-UX Access Control List

## **Installing and Administering NFS Services**

This manual tells how to install, configure, and maintain the NFS Services product software. Yellow Pages (YP) configuration, and maintenance is included.

**Part number:** B1013-90001

**Spine title:** *Installing and Administering NFS Services*

**Systems:** 300/800

**Audience:** NFS users and network managers

**Tasks:** Consult this document to perform these tasks:

- Install NFS
- Configure and maintain NFS
- Configure and maintain YP



## **Programming and Protocols for NFS Services**

This manual contains overviews of Remote Procedure Call (RPC), External Data Representation (XDR) and Yellow Pages. An RPC programming guide is also included, along with protocol specifications for RPC, XDR and YP.

**Part number:** B1013-90002

**Spine title:** *Programming and Protocols for NFS Services*

**Systems:** 300/800

**Audience:** Network programmers

**Tasks:** Consult this document to perform these tasks:

- Create programs using remote procedure calls (RPCs) and the remote procedure call protocol compiler (RCPGEN)
- Understand and use the External Data Representation (XDR) protocol
- Understand and use the Yellow Pages (YP) protocol

## **NFS Services Reference Pages**

This manual contains the reference pages for NFS Services.

**Part number:** B1013-90003

**Spine title:** (no spine)  
Tabbed *NFS Services Reference Pages* are in the *Networking Reference* manual.

**Systems:** 300/800

**Audience:** Experienced HP-UX users who use, program with, and manage the NFS Services Software

**Tasks:** Consult this document to perform these tasks:

- Look up references for HP-UX networking commands, system calls, libraries, file formats, and device files for NFS Services

## Using ARPA Services

This manual contains introductory information on the ARPA and Berkeley Services, a user's view of internetwork mailing, and chapters explaining how to use the ARPA and Berkeley Services.

**Part number:** B1014-90000

**Spine title:** *Using ARPA Services*

**Systems:** 300/800

**Audience:** Users of ARPA/Berkeley Services

**Tasks:** Consult this document to perform these tasks:

- Route network mail
- List remote host information
- List remote user information
- Log onto a remote host
- Perform remote file transfers
- Copy files on a remote host
- remote command execution

## Installing and Administering ARPA Services

This manual is for network managers of HP 9000 computer systems using the ARPA product. The manual explains how to install, configure and maintain the ARPA product software.

**Part number:** B1014-90001

**Spine title:** *Installing and Administering ARPA Services*

**Systems:** 300/800

**Audience:** ARPA network managers

**Tasks:** Consult this document to perform these tasks:

- Install ARPA Services
- Maintain ARPA Services
- Configure, maintain, and troubleshoot the BIND name server (a distributed network information lookup service)
- Configure and troubleshoot `gated` (a daemon that determines packet routing)
- Install, configure, and troubleshoot `sendmail` (an internetwork mail routing service)
- Troubleshoot ARPA Services

## **ARPA/Berkeley Services Reference Pages**

This manual contains the reference pages for the ARPA/Berkeley Services.

**Part number:** B1014-90002

**Spine title:** (no spine)  
Tabbed *ARPA/Berkeley Services Reference Pages* are in the *Networking Reference* manual.

**Systems:** 300/800

**Audience:** Experienced HP-UX users who use, program with, and manage the ARPA/Berkeley Services software.

**Tasks:** Consult this document to perform these tasks:

- Look up references for HP-UX networking commands, system calls, libraries, file formats, and device files for ARPA/Berkeley Services

---

## Native Language Support and Input/Output

**2-112 HP-UX Manual Citations**

## **Simplified Chinese Input Method Guide**

This manual explains how to use Simplified Chinese input methods for host conversion input on the HP 9000 Series 800 and Series 300 computers. This entire manual is written in Chinese.

**Part number:** 92550-90001

**Spine title:** *Simplified Chinese Input Method Guide*

**Systems:** 300/800

**Audience:** General users

**Tasks:** Consult this document to perform these tasks:

- Use the language-specific input method for host conversion input

## **Simplified Chinese Code Book**

This manual explains how to use Simplified Chinese code for host conversion input on the HP 9000 Series 800 and Series 300 computers. This entire manual is written in Chinese.

**Part number:** 92550-90002

**Spine title:** *Simplified Chinese Code Book*

**Systems:** 300/800

**Audience:** General users

**Tasks:** Consult this document to perform these tasks:

- Use the language-specific code for host conversion input
- Get a description of keyboard functions and input methods
- Consult the reference section of NLIO commands



## Traditional Chinese Input Method Guide

This manual explains how to use Traditional Chinese input methods for host conversion input on the HP 9000 Series 800 and Series 300 computers. This entire manual is written in Chinese.

**Part number:** 92552-90001

**Spine title:** *Traditional Chinese Input Method Guide*

**Systems:** 300/800

**Audience:** General users

**Tasks:** Consult this document to perform these tasks:

- Use the language-specific input method for host conversion input



## **Traditional Chinese Code Book**

This manual explains how to use Traditional Chinese code for host conversion input on the HP 9000 Series 800 and Series 300 computers. This entire manual is written in Traditional Chinese.

**Part number:** 92552-90002

**Spine title:** *Traditional Chinese Code Book*

**Systems:** 300/800

**Audience:** General users

**Tasks:** Consult this document to perform these tasks:

- Use the language-specific code for host conversion input
- Get a description of keyboard functions and input methods
- Consult the reference section of NLIO commands

## **Native Language I/O Access User's Guide**

This manual explains how to use the Native Language Input/Output (NL I/O) subsystem on the HP 9000 Series 800 and Series 300 computers. A programming section for advanced users and/or programmers is included. The keyboard functions and input methods for Japanese, Simplified Chinese, Traditional Chinese and Korean are briefly described. In addition, this guide provides a reference section for the NL I/O commands.

**Part number:** 92559-90001 (*English version*) 92557-90004 (*Japanese version*)  
92550-90004 (*Simplified Chinese version*) 92552-90004  
(*Traditional Chinese version*) 92555-90004 (*Korean version*)  
(The Korean Code and Input Methods information is included in this book)

**Spine title:** *Native Language I/O Access User's Guide*

**Systems:** 300/800

**Audience:** General users

**Tasks:** Consult this document to perform these tasks:

- Use the NLIO subsystem
- Program using NLIO
- Look up the filesets and font descriptions for the supported language

## **Native Language I/O System Administrator's Guide**

This guide tells system administrators how to install the Native Language I/O subsystem on the HP 9000 Series 300 and Series 800 computers. Section I explains how to install Asian language-dependent printers and terminals. Host computer hardware and software requirements are also covered. Japanese, Simplified Chinese, Traditional Chinese and Korean peripherals are covered in separate sections. The following additional fonts are covered in this manual: Japanese, Traditional Chinese and Korean simplex fonts and Japanese designer fonts.

**Part number:** 92559-90002 (*English version*) 92557-90003 (*Japanese version*)  
92550-90003 (*Simplified Chinese version*) 92552-90003  
(*Traditional Chinese version*) 92555-90003 (*Korean version*)

**Spine title:** *Native Language I/O System Administrator's Guide*

**Systems:** 300/800

**Audience:** System administrators

**Tasks:** Consult this document to perform these tasks:

- Learn about the hardware and software supported by NLIO
- Install and configure NLIO

## Native Language Support: HP-UX Concepts and Tutorials

This manual describes HP's Native Language Support system, which assists developers in the task of creating software which functions in a variety of human languages.

**Part number:** 97089-90058

**Spine title:** *Native Language Support: HP-UX Concepts and Tutorials*

**Systems:** 300/800

**Audience:** General users, system administrators, and programmers

**Tasks:** Consult this document to perform these tasks:

- Using internationalized commands
- Developing international software
- Character codes and codesets
- Local customs
- Messaging in local languages
- Administering international software
  - NLS files
  - Install/update procedures
  - Setting the default user environment
  - Changing the user's environment
- Localizing international software
  - Creating a locale
  - Localizing messages
- Advanced NLS functions
  - Configuring environment and equipment
  - Using NLIO
  - Codeset conversion
  - Processing right-to-left languages

## **Kanji Code Book**

This manual explains how to use Kanji code for host conversion input on the HP 9000 Series 800 and Series 300 computers. This entire manual is written in Japanese.

**Part number:** 98861-90003

**Spine title:** *Kanji Code Book*

**Systems:** 300/800

**Audience:** General users

**Tasks:** Consult this document to perform these tasks:

- Use the language-specific code for host conversion input
- Get a description of keyboard functions and input methods
- Consult the reference section of NLIO commands

## **Japanese Input Method Guide**

This manual explains how to use the Japanese input methods for host conversion input on the HP 9000 Series 800 and Series 300 computers. This entire manual is written in Japanese.

**Part number:** 98861-90009

**Spine title:** *Japanese Input Method Guide*

**Systems:** 300/800

**Audience:** General users

**Tasks:** Consult this document to perform these tasks:

- Use the language-specific input method for host conversion input

---

## Programming on HP-UX (General)

**2-122 HP-UX Manual Citations**



## HP-UX Concepts and Tutorials: Programming Environment

This tutorial describes how to write programs that interface with the HP-UX operating system in a non-trivial way. This includes programs that use files by name, that use pipes, that invoke other commands as they run, or that attempt to catch interrupts and other signals during execution.

**Part number:** 97089-90042

**Spine title:** *HP-UX Concepts and Tutorials: Programming Environment*

**Systems:** 300/800

**Audience:** All HP-UX programmers

**Tasks:** Consult this document to perform these tasks:

- Program in HP-UX
- Use HP-UX system calls
- Use standard C library routines
- Use `lint`, the picky C program checker
- Use `m4`, a macro preprocessor for C and rational FORTRAN (Ratfor)
- Use `yacc`, yet another compiler-compiler
- Use the `cdb` debugger
- Use `make`, a program for managing program development
- Use `SCCS`, a source code control system for HP-UX
- Use `lex`, a lexical analyzer generator

## **HP-UX Concepts and Tutorials: Device I/O and User Interfacing**

This manual presents three topics: Device I/O Library (DIL) Routines, Native Language Support (NLS), and Curses and Terminfo. Each section has its own table of contents, indices, and appendices.

**Part number:** 97089-90057

**Spine title:** *HP-UX Concepts and Tutorials: Device I/O and User Interfacing*

**Systems:** 300/800

**Audience:** System programmers

**Tasks:** Consult this document to perform these tasks:

- Use the Device I/O Library (DIL)
- Program with `curses` and `terminfo`—terminal-independent I/O routines

## **HP-UX Concepts and Tutorials: Facilities for 200/300/500**

This manual describes the internal terminal emulator (ITE), the asynchronous terminal emulator, and the HP 9000 Series 200 68000 assembler for programmers.

**Part number:** 97089-90081

**Spine title:** *HP-UX Concepts and Tutorials: Facilities for 200/300/500*

**Systems:** 300

**Audience:** Programmers

**Tasks:** Consult this document to perform these tasks:

- Use the internal terminal emulator on a Series 300 computer
- Understand the asynchronous terminal emulator
- Use the HP 9000 Series 200 68000 HP-UX assembler
- Program or configure HP-HIL devices

## **Floating Point Accelerator Reference**

This manual gives instructions on how to use the floating-point accelerator (FPA), a memory-mapped coprocessor for HP 9000 Series 300 computers.

**Part number:** 98248-90020

**Spine title:** *Floating Point Accelerator Reference*

**Systems:** 300

**Audience:** Assembly-language programmers

**Tasks:** Consult this document to perform these tasks:

- Understand the architecture of the floating-point accelerator (FPA) card
- Use the various addressing modes of the accelerator

## HP-UX POSIX Conformance Document

This document defines the behavior of HP-UX for certain defined situations and specific aspects of system operation, as required by the POSIX standard.

**Part number:** 98794-90009

**Spine title:** (no spine)

**Systems:** 300/800

**Audience:** Experienced HP-UX users and programmers who are interested in issues related to the POSIX standard.

**Tasks:** This is not a tasks manual. It is a document that defines how HP-UX behaves in certain situations that are left to the discretion of the supplier of POSIX-conformant software. Typically, these items are related to hardware-specific behavior and other issues that cannot readily be defined across broad classes of machines and system architectures.

It should be noted that the POSIX standard is still under development, and material contained in this document is subject to change between releases.



## **HP-UX Portability Guide: HP 9000 Series 300/800 Computers**

This manual presents guidelines and techniques for maximizing the portability of C, Pascal, and FORTRAN programs on the HP 9000 computers with the HP-UX operating system. It concentrates on moving source code from one system to another and provides a general overview in the areas of porting code from operating systems other than HP-UX to the HP-UX environment, porting C, FORTRAN, or Pascal source code between Series 300 and 800 systems, and summarizing system calls and functions known to be system-dependent.

**Part number:** 98794-90047

**Spine title:** *HP-UX Portability Guide: HP 9000 Series 300/800 Computers*

**Systems:** 300/800

**Audience:** Programmers

**Tasks:** Consult this document to perform these tasks:

- Port DEC VAX code to HP-UX
- Port across HP-UX
- Use system calls and subroutines
- Port Pascal Workstation code to HP-UX

---

## Programming in Ada

## **Reference Manual for the Ada Programming Language**

This manual defines the standard for Ada as set by the United States Department of Defense.

**Part number:** 97055-90610

**Spine title:** *Reference Manual for the Ada Programming Language*

**Systems:** 300

**Audience:** Ada programmers

**Tasks:** Consult this document to perform these tasks:

- Consult the ANSI standard description of Ada programming language



## **Programming in Ada**

by J. G. P. Barnes

This book gives you an overall description of Ada.

**Part number:** 97055-90611

**Spine title:** *Programming in Ada*

**Systems:** 300

**Audience:** Ada programmers

**Tasks:** Consult this document to perform these tasks:

- Program in Ada

## **Ada User's Guide**

This manual provides information on the use of the Ada/300 compiler and its utilities. It also contains all the information necessary to develop, compile, bind, link, and execute Ada/300 programs.

**Part number:** 98860-90001

**Spine title:** *Ada User's Guide*

**Systems:** 300

**Audience:** Programmers

**Tasks:** Consult this document to perform these tasks:

- Learn to use the Ada/300 compiler and its utilities
- Develop, compile, bind, link, and execute Ada/300 programs

## Reference Manual for the Ada Programming Language, Appendix F

This manual describes the implementation-dependent characteristics of the HP 9000 Series 300 System Ada compiler.

**Part number:** 98860-90011

**Spine title:** *Reference Manual for the Ada Programming Language, Appendix F*

**Systems:** 300

**Audience:** Ada programmers

**Tasks:** Consult this document to perform these tasks:

- Learn about implementation-dependent pragmas and attributes
- Read the specifications of the packages SYSTEM and STANDARD
- Learn the restrictions on type conversions
- Learn the implementation-dependent characteristics of the I/O packages

## **Ada Tools Manual**

This manual explains the tools AdaProbe, AdaXref, AdaFormat, and AdaMake.

**Part number:** 98860-90041

**Spine title:** *Ada Tools Manual*

**Systems:** 300

**Audience:** Ada programmers

**Tasks:** Consult this document to perform these tasks:

- Debug and view Ada/300 programs with AdaProbe
- Cross-reference an Ada/300 program with AdaXref
- Reformat an Ada/300 program with AdaFormat
- Build a command file automatically with AdaMake

---

## Programming in Assembly Language

## **M68000 16/32-Bit Microprocessor Programmer's Reference Manual**

Fourth Edition by Motorola, Inc.

This manual gives all the key information for software architects, computer designers, and programmers to complete software systems using the M68000 family of microprocessors. To facilitate design and for fullest understanding, each instruction is described in bit pattern format. Explicit examples of each instruction's operation are included.

**Part number:** 09826-90073

**Spine title:** *M68000 16/32-Bit Microprocessor Programmer's Reference Manual*

**Systems:** 300

**Audience:** Assembly-language programmers

**Tasks:** Consult this document to perform these tasks:

- Learn about the M68000 family architecture and instruction set

## **HP-UX Assembler Reference Manual and Supporting Documents**

This reference manual describes how to use the **as10** and **as20** assemblers to produce programs for HP 9000 Series 300 computers.

**Part number:** 98597-90020

**Spine title:** *HP-UX Assembler Reference Manual and Supporting Documents*

**Systems:** 300

**Audience:** Assembly-language programmers

**Tasks:** Consult this document to perform these tasks:

- Use the M68010/M68020/M68030 assembler
- Practice with an ADB debugger tutorial
- Learn the protocol for passing parameters in C, FORTRAN, and Pascal
- Use **atime** (assembly timing facility)

## **MC68020 32-Bit Microprocessor User's Manual**

Second Edition by Motorola, Inc.

This manual describes the MC68020 in full detail, including a definition of the instruction set, complete timing diagrams, and descriptions of the instruction cache, coprocessor interface, and addressing modes.

**Part number:** 98615-90606

**Spine title:** *MC68020 32-Bit Microprocessor User's Manual*

**Systems:** 300

**Audience:** Assembly-language programmers

**Tasks:** Consult this document to perform these tasks:

- Learn about the MC68020 architecture and instruction set



## **MC68881 Floating-Point Coprocessor User's Manual**

First Edition by Motorola, Inc.

This manual describes the architecture and instruction set of the MC68881 floating-point coprocessor.

**Part number:** 98615-90607

**Spine title:** *MC68881 Floating-Point Coprocessor User's Manual*

**Systems:** 300

**Audience:** Assembly-language programmers

**Tasks:** Consult this document to perform these tasks:

- Learn about the MC68881 architecture and instruction set

---

## Programming in BASIC

## **HP-UX Technical BASIC Programming Guide for HP 9000 Computers**

This Guide describes how to develop Technical BASIC programs. It covers a range of topics from design algorithms through writing advanced BASIC programs. It provides programming techniques, helpful hints, explanations of capabilities, and many examples of BASIC algorithms.

**Part number:** 97068-90001

**Spine title:** *HP-UX Technical BASIC Programming Guide for HP 9000 Computers*  
(in two volumes)

**Systems:** 300

**Audience:** BASIC programmers

**Tasks:** Consult this document to perform these tasks:

- Learn general programming techniques for Technical BASIC
- Use data types, branching, debugging, file access
- Program with graphics
- Create graphics with HP Windows/9000
- Call C, FORTRAN, and Pascal from Technical BASIC



## **HP-UX Technical BASIC Getting Started Guide for HP 9000 Computers**

This guide introduces you to the Technical BASIC system, which runs on the HP-UX operating system. It describes the mechanics of using the system to develop programs and provides references to the manuals describing the many features of the Technical BASIC language.

**Part number:** 97068-90010

**Spine title:** *HP-UX Technical BASIC Getting Started Guide for HP 9000 Computers*

**Systems:** 300

**Audience:** BASIC programmers

**Tasks:** Consult this document to perform these tasks:

- Enter the BASIC interpreter
- Use the editor
- Study examples of how to access peripherals

## **Appendix: HP-UX Technical BASIC Implementation Specifics**

This appendix describes the implementation-dependent features of the HP 9000 Series 200/300 and Series 500 Technical BASIC language. It contains information on numeric data ranges, printing techniques, variations in keyword/feature support, and new keywords and features.

**Part number:** 97068-90020

**Spine title:** *HP-UX Technical BASIC Language Reference, Volume 2*

**Systems:** 300

**Audience:** BASIC programmers

**Tasks:** Consult this document to perform these tasks:

- Identify implementation-specific features for Series 300 and 500
- Learn Technical BASIC differences from Integral PC

## **HP-UX Technical BASIC I/O Programming Guide for HP 9000 Computers**

This manual covers input/output (I/O) programming techniques for HP-UX Technical BASIC. Included are descriptions of the I/O statements which can be used to establish, maintain, and control communication between a computer and its I/O resources.

**Part number:** 97068-90030

**Spine title:** *HP-UX Technical BASIC I/O Programming Guide for HP 9000 Computers*

**Systems:** 300

**Audience:** BASIC programmers

**Tasks:** Consult this document to perform these tasks:

- Perform device input/output operations
- Learn techniques for using the HP-IB and GPIO interfaces

## **HP-UX Technical BASIC Reference Manual for HP 9000 Computers**

This manual serves as a reference for programmers who are experienced in HP-UX Technical BASIC. It includes:

- general information about BASIC keywords
- a dictionary of keywords, functions, and statements
- a glossary
- reference tables of character sets, system reset conditions, and graphic conditions
- tables of buffer status, interface status, and control registers
- error messages
- a list of BASIC keywords by function

**Part number:** 97068-90050

**Spine title:** *HP-UX Technical BASIC Reference Manual for HP 9000 Computers*

**Systems:** 300

**Audience:** BASIC programmers

**Tasks:** Consult this document to perform these tasks:

- Look up keywords in a dictionary
- Read explanations of each Technical BASIC statement

## HP-UX Technical BASIC Quick Reference Guide

This manual provides a brief description of the elements of HP-UX Technical BASIC, including:

- operators used to construct numeric and string expressions
- types of variables and files
- keywords used to construct functions, statements, program lines, and commands
- tables of frequently-needed information

**Part number:** 97068-90070

**Spine title:** (no spine)

**Systems:** 300

**Audience:** BASIC programmers

**Tasks:** Consult this document to perform these tasks:

- Consult a pocket-sized version of *HP-UX Technical BASIC Reference Manual*



## Using the BASIC/UX System

This manual describes how to use BASIC/UX. It provides information on: entering and leaving BASIC/UX, using BASIC/UX windows, performing tasks with BASIC/UX, and using HP-UX commands in BASIC/UX.

**Part number:** 98796-90000

**Spine title:** *Using the BASIC/UX System*

**Systems:** 300

**Audience:** BASIC/UX Programmers

**Tasks:** Consult this document to perform these tasks:

- Entering and Leaving BASIC/UX
- Using BASIC/UX window commands
- Reading the BASIC/UX screen and executing commands
- Working with files, directories, and volumes
- Editing a program and storing it on a disk
- Loading and running programs
- Using softkeys
- Using HP-UX commands in BASIC/UX
- Creating environment and autostart files
- Working with LIF disks and the SRM
- Using the ITF and terminal keyboard
- Referencing the rmb command

## **BASIC/UX Compiler User's Manual**

This manual provides the necessary information for using the BASIC/UX compiler for improving the performance of your interpreted BASIC/UX programs.

**Part number:** 98796-90005

**Spine title:** *BASIC/UX Compiler User's Manual*

**Systems:** 300

**Audience:** BASIC/UX Compiler User's Manual

**Tasks:** Consult this document to perform these tasks:

- Using the BASIC/UX compiler
- Using BASIC/UX compiler directives
- Improving compiled programs
- Interpreting error and warning messages
- Troubleshooting compiled program problems

## **BASIC/UX Programming Techniques**

This manual is intended to introduce you to the Series 300 BASIC/UX programming language, and to provide some helpful hints on getting the most utility from it. Although this manual assumes that you have had some previous programming experience, you need not have a high skill level, nor does your previous experience need to be BASIC/UX.

**Part number:** 98796-90010

**Spine title:** *BASIC/UX Programming Techniques*  
*Volume 1: General Topics*  
*Volume 2: Porting Information*

**Systems:** 300

**Audience:** BASIC/UX Programmers

**Tasks:** Consult this document to perform these tasks:

- Learning program structure and flow
- Performing numeric computations
- Using numeric arrays
- Manipulating strings
- Creating subprograms and user-defined functions
- Storing and retrieving data
- Using a printer
- Using the clock and timer
- Communicating with the operator
- Handling errors
- Debugging programs
- Making efficient use of your computer's resources
- Porting to BASIC/UX

## **BASIC/UX Graphics Techniques**

This manual introduces you to the powerful set of graphics statements in the BASIC/UX programming language, as well as it teaches you how to use them to produce pleasing output. This manual assumes you have read the first five chapters in the “BASIC/UX Programming Techniques: Volume 1” manual, and that you will refer to that manual when you encounter any programming topics you do not understand.

**Part number:** 98796-90020

**Spine title:** *BASIC/UX Graphics Techniques*

**Systems:** 300

**Audience:** BASIC/UX Programmers

**Tasks:** Consult this document to perform these tasks:

- Learning about graphics in BASIC/UX
- Using graphics effectively
- Using printers and plotters
- Creating interactive graphics programs
- Using interactive graphics input
- Using color in your graphics output
- Learning two- and three dimensional transformations

## **BASIC/UX Interfacing Techniques**

This manual is intended to present the concepts of computer interfacing that are relevant to programming in BASIC/UX on HP Series 300 computers. This manual does not deal with computer architecture or hardware in general.

**Part number:** 98796-90030

**Spine title:** *BASIC/UX Interfacing Techniques*  
*Volume 1: General Topics*  
*Volume 2: Specific Interfaces*

**Systems:** 300

**Audience:** BASIC/UX Programmers

**Tasks:** Consult this document to perform these tasks:

- Learning interfacing concepts
- Directing data flow
- Outputting data
- Entering data
- Using registers
- Learning event-initiated branching
- Using I/O path attributes
- Transferring data
- Sending/receiving data to/from interfaces:
  - display
  - keyboard
  - HP-IB
  - serial
  - datacomm
  - GPIO
  - HP-HIL

■ Using BASIC/UX in the X Window System

## **Installing and Maintaining the BASIC/UX System**

This manual explains how to install BASIC/UX on the HP-UX operating system and once it is installed how configure and maintain it.

**Part number:** 98796-90040

**Spine title:** *Installing and Maintaining the BASIC/UX System*

**Systems:** 300

**Audience:** BASIC/UX Programmers

**Tasks:** Consult this document to perform these tasks:

- Installing BASIC/UX on HP-UX
- Backing-up files form a BASIC Workstation
- Configuring your system for use with BASIC/UX
- Maintaining the BASIC/UX system
- Using BASIC/UX utilities



## **BASIC/UX Language Reference**

This is a two volume manual that contains an alphabetical reference to all of the keywords currently available with the BASIC/UX language system. Each keyword is given a detailed description and examples are provided. The appendices in volume two of this manual provides information on: the language history, terminology used in the manual, interface registers, useful tables, error messages, and a keyword summary.

**Part number:** 98796-90050

**Spine title:** *BASIC/UX Language Reference*

**Systems:** 300

**Audience:** BASIC/UX Programmers

**Tasks:** Consult this document to perform these tasks:

- Reference BASIC/UX keywords
- Look up BASIC/UX error messages
- Reference BASIC/UX register information



## **BASIC/UX Condensed Reference**

This is a pocket size manual that provides a brief description of BASIC/UX: data types, expression evaluation, graphics mapping, the color model, the HSL color model, keyword summary, error messages, and registers.

**Part number:** 98796-90060

**Spine title:** (no spine)

**Systems:** 300

**Audience:** BASIC/UX Programmers

**Tasks:** Consult this document to perform these tasks:

- Learn about BASIC/UX data types
- Understand how expressions are evaluated in BASIC/UX
- Understand simplified graphics mapping
- Learn the simplified color model
- Reference BASIC/UX keywords
- Look up BASIC/UX error messages
- Reference BASIC/UX register information

## **Developing CSUBs for BASIC/UX**

This manual explains how to develop a compiled subprogram in Pascal, C, FORTRAN, or assembly language that is callable from BASIC/UX.

**Part number:** 98796-90095

**Spine title:** (no spine)

**Systems:** 300

**Audience:** BASIC/UX programmers

**Tasks:** Consult this document to perform these tasks:

- Write Pascal CSUBs
- Write C and assembly CSUBs
- Write FORTRAN CSUBs
- Use the CSUB Prototyper utility
- Port Pascal Workstation assembly-language CSUBs
- Reference file access library routines
- Reference keyboard and CRT I/O routines

---

## Programming in C

## **A Book on C**

by Al Kelley and Ira Pohl

This book provides an introduction to programming in the C language. Sample programs illustrate language features, and tables summarize key information. Each chapter ends with a summary (which reviews key elements) and exercises (which augment and extend the text).

**Part number:** 98597-90610

**Spine title:** *A Book on C*

**Systems:** 300

**Audience:** C programmers

**Tasks:** Consult this document to perform these tasks:

- Read a description of the C language
- Practice with C tutorials
- Study C programming examples
- Do exercises in C programming

## **C Programmer's Guide: HP 9000 Series 300 Computers**

This manual describes essential elements of using HP's implementation of the C language on HP 9000 Series 300 computers. It offers an overview of C, describes C data types, and discusses how to optimize C programs using compiler options and directives.

**Part number:** 98794-90031

**Spine title:** *C Programmer's Guide: HP 9000 Series 300 Computers*

**Systems:** 300

**Audience:** C programmers

**Tasks:** Consult this document to perform these tasks:

- Learn about other C documentation
- Learn about C data types and alignments
- Use the optimizer

---

## Programming in COBOL

## **COBOL/HP-UX Language Reference Manual**

This manual describes COBOL/HP-UX, a programming language which is based on the ANSI COBOL standard X3.23-1985.

**Part number:** 35328-90001

**Spine title:** *COBOL/HP-UX Language Reference Manual*  
(in two volumes)

**Systems:** 300/800

**Audience:** COBOL programmers

**Tasks:** Consult this document to perform these tasks:

- Look up COBOL commands and syntax



## **COBOL/HP-UX Operating Manual**

This manual consists of three parts:

- *Getting Started with COBOL/HP-UX*: This is brief booklet which introduces COBOL/HP-UX to COBOL programmers.
- *Operating Guide*: This describes operating procedures for COBOL/HP-UX.
- *Error Messages*: This is a full listing of the error messages that programmers can receive when they submit source code to the COBOL/HP-UX compilers or Run-Time System.

**Part number:** 35328-90002

**Spine title:** *COBOL/HP-UX Operating Manual*

**Systems:** 300/800

**Audience:** COBOL programmers

**Tasks:** Consult this document to perform these tasks:

- Compile and run COBOL programs
- Check error messages generated when compiling or running COBOL programs



## **COBOL/HP-UX Animator/Forms-2 Manual**

This manual contains four sections:

- *Animator*: This describes how to use the ANIMATOR facility for use in debugging.
- *Forms-2*: This describes how to use the FORMS-2 package to design, create, and edit interactive screen layouts for use with COBOL/HP-UX programs.
- *Conversion-3* and *Conversion-5*: These describe how to process programs and data files from other COBOL systems for use with COBOL/HP-UX.

**Part number:** 35328-90003

**Spine title:** *COBOL/HP-UX Animator/Forms-2 Manual*

**Systems:** 300/800

**Audience:** COBOL programmers

**Tasks:** Consult this document to perform these tasks:

- Debug COBOL programs
- Design, create, and edit interactive screen layouts
- Convert COBOL programs to run under COBOL/HP-UX

## **COBOL/HP-UX Pocket Guide**

This is a quick and compact summary of the essential information required when developing software in COBOL/HP-UX.

**Part number:** 35328-90012

**Spine title:** *COBOL/HP-UX Pocket Guide*

**Systems:** 300/800

**Audience:** COBOL programming

**Tasks:** Consult this document to perform these tasks:

- Check COBOL commands, data structures, and syntax

---

## Programming in FORTRAN

## **FORTRAN/9000 Reference**

This manual describes all FORTRAN/9000 features and how to compile, link, and run FORTRAN/9000 programs. It also contains information on program optimization and porting to and from other FORTRAN 77 implementations. The manual is written for developers of FORTRAN applications in HP-UX.

**Part number:** 98598-90041

**Spine title:** *FORTRAN/9000 Reference*

**Systems:** 300

**Audience:** FORTRAN77 programmers

**Tasks:** Consult this document to perform these tasks:

- Learn the syntax and semantics of FORTRAN/9000
- Study programming techniques with FORTRAN/9000
- Compare FORTRAN/9000 and F77 for Series 300 and Series 500

---

## Programming in Lisp

## **Common LISP: The Language**

by Guy L. Steele, Jr.

This book describes a version of Lisp designed to be used as a common dialect by Lisp implementors.

**Part number:** 9320-6047

**Spine title:** *Common LISP: The Language*

**Systems:** 300/800

**Audience:** Lisp programmers

**Tasks:** Consult this document to perform these tasks:

- Learn about Lisp language constructs
- Read a complete specification of Common Lisp

## **HP Common Lisp II Installation Guide**

This manual provides the necessary directions for installing HP Common Lisp II.

**Part number:** 98688-90000

**Spine title:** *HP Common LISP II Installation Guide*

**Systems:** 300

**Audience:** Lisp programmers and HP-UX system administrators

**Tasks:** Consult this document to perform these tasks:

- Install Common Lisp II

## **HP Common Lisp II User's Guide**

This manual describes the HP Common Lisp II programming environment.

**Part number:** 98688-90010

**Spine title:** *HP Common Lisp II User's Guide*

**Systems:** 300

**Audience:** Lisp programmers

**Tasks:** Consult this document to perform these tasks:

- Create programs in HP Common Lisp II



## **HP Common Lisp I & II: A Comparison**

This manual provides a comparison of the features and functionality of HP Common Lisp I and HP Common Lisp II.

**Part number:** 98688-90030

**Spine title:** *HP Common Lisp I & II: A Comparison*

**Systems:** 300

**Audience:** Lisp programmers

**Tasks:** Consult this document to perform these tasks:

- Read a comparison of Common Lisp I and Common Lisp II



## **HP Common Lisp II Reference Manual**

This manual serves as a reference to the functionality and features of HP Common Lisp II.

**Part number:** 98688-90050

**Spine title:** *HP Common Lisp II Reference Manual*

**Systems:** 300

**Audience:** Lisp programmers

**Tasks:** Consult this document to perform these tasks:

- Find detailed reference information for Common Lisp II

---

## Programming in Pascal

## **An Introduction to Programming and Problem Solving with Pascal**

by G. Michael Schneider, Steven W. Weingart, and David M. Perlman

This book is an introductory Pascal programming course which presents the following topics: problem specification, algorithm development, top-down modular programming, structured coding, and program testing.

**Part number:** 09826-90072

**Spine title:** *An Introduction to Programming and Problem Solving with Pascal*

**Systems:** 300

**Audience:** Pascal programmers

**Tasks:** Consult this document to perform these tasks:

- Learn structured programming in Pascal through a tutorial
- Study Pascal programming style guidelines

## HP Pascal Language Reference

This manual is a language reference for HP Pascal. It includes a description for each of the keywords (reserved words and standard identifiers) recognized by HP Pascal. It offers additional information about permissible ranges for numeric values, restrictions on variable sizes, compiler options, system programming extensions, and error codes.

**Part number:** 98615-90053

**Spine title:** *HP Pascal Language Reference: HP 9000 Series 200/300*

**Systems:** 300

**Audience:** Pascal programmers

**Tasks:** Consult this document to perform these tasks:

- Look up Series 300 Pascal syntax and semantics
- Learn about the HP-UX implementation of Pascal

---

# Using MS-DOS<sup>R</sup> on HP-UX

## **DOS Coprocessor Software Installation Guide**

This manual describes the procedures for installing and configuring the DOS Coprocessor software. It also describes new features of release 2.0 and provides a procedure for auto-booting DOS for users who want minimal involvement with HP-UX.

**Part number:** 98531-90005

**Spine title:** *DOS Coprocessor Software Installation Guide*

**Systems:** 300

**Audience:** DOS Coprocessor users

**Tasks:** Consult this document to perform these tasks:

- Install the DOS Coprocessor software

## Using the DOS Coprocessor

This manual describes how to use all of the features of the DOS Coprocessor. It also describes the fundamentals of using MS-DOS and provides instructions for using PAM (Personal Applications Manager) and MCS (Multiple Character Set utility). Configuration instructions for local language support are also provided.

**Part number:** 98531-90006

**Spine title:** *Using the DOS Coprocessor*

**Systems:** 300

**Audience:** DOS Coprocessor users

**Tasks:** Consult this document to perform these tasks:

- Learn about DOS
- Use all the features of the DOS Coprocessor
- Configure the DOS Coprocessor to use HP-UX devices
- Localize DOS for native languages



## **SoftPC Installation Guide**

This manual describes hardware and software requirements for using the SoftPC and provides procedures for installing it.

**Part number:** 98870-90000

**Spine title:** (no spine)

**Systems:** 300/800

**Audience:** SoftPC users

**Tasks:** Consult this document to perform these tasks:

- Install the SoftPC on HP 9000 computers

## **SoftPC User's Guide**

This manual describes how to use all of the features provided with SoftPC, both in an X11 and a terminal environment. It also describes how to use PAM (Personal Applications Manager) and MCS (Multiple Character Set utility) and how to localize DOS for various languages.

**Part number:** 98870-90010

**Spine title:** (no spine)

**Systems:** 300/800

**Audience:** SoftPC users

**Tasks:** Consult this document to perform these tasks:

- Install SoftPC
- Learn about DOS
- Use all the features of the SoftPC
- Configure the SoftPC to use HP-UX devices
- Localize DOS for native languages

## **Microsoft MS-DOS<sup>R</sup> 3.3 Reference**

This manual is a complete functional reference to MS-DOS 3.3, including commands, configuration options, batch file programming, utilities, and error messages.

**Part number:** 98870-90050

**Spine title:** *Microsoft<sup>R</sup> MS-DOS<sup>R</sup> 3.3 Reference*

**Systems:** 300/800

**Audience:** SoftPC and DOS Coprocessor users

**Tasks:** Consult this document to perform these tasks:

- Look up DOS 3.3 commands
- Use DOS 3.3 utilities

## **Microsoft MS-DOS<sup>R</sup> 3.3 Quick Reference**

This manual is a quick syntax reference to MS-DOS 3.3 commands

**Part number:** 98870-90060

**Spine title:** (no spine)

**Systems:** 300/800

**Audience:** SoftPC and DOS Coprocessor users

**Tasks:** Consult this document to perform these tasks:

- Look up the syntax of DOS 3.3 commands



## Index

---

### A

#### Ada

- command files, creating, 2-134
- cross referencing, 2-134
- debugging, 2-134
- input/output, 2-133
- programming in, 2-131
- reference, 2-130
- reformatting, 2-134
- STANDARD package, 2-133
- SYSTEM package, 2-133
- type conversion restrictions, 2-133

#### ALLBASE/NET

- commands, 2-31
- installing, 2-31
- setting up an alias DBEnvironment, 2-31

#### ALLBASE/SQL

- reference, 2-25

#### Application Execution Environment

- installing, 2-9
- updating, 2-8

#### applications

- installing on AXE, 2-8
- applications, selecting from a menu, 2-8

#### ARPA/Berkeley Services

- BIND name server, 2-110
- installing, 2-110
- internetwork mail routing with `send-mail`, 2-110
- maintaining, 2-110
- overview, 2-104

- packet routing with `gated`, 2-110
- troubleshooting, 2-110

#### ARPA/Berkely Services

- command reference, 2-111

#### ASCII character set, referencing, 2-101

#### attributes

- in Ada, 2-133

#### auditing

- selecting events for, 2-5
- selecting system calls for, 2-5
- selecting users for, 2-5
- setting audit file monitor daemon, 2-5
- setting audit log file parameters, 2-5
- turning on/off, 2-5
- viewing audit log records, 2-5

#### `awk` text processor, 2-14

#### AXE

- installing, 2-9
- updating, 2-8

#### AXE kernel, creating, 2-8

### B

#### backing up an HP-UX system, 2-10

#### boot-up problems, 2-4

#### Bourne Shell

- changing to Korn or C, 2-19
- login scripts, modifying, 2-19
- login scripts, understanding, 2-19
- using, 2-17

## C

### C

- graphics reference, 2-50
- calculator, interactive
  - bc**, 2-17
  - dc**, 2-17
- cdb** C program debugger, using, 2-123
- cluster
  - troubleshooting, 2-4
- clusters, 2-11
- clusters, managing, 2-10
- command reference
  - ARPA/Berkely Services, 2-111
- commands
  - basic HP-UX, 2-18
  - for SNA/9000, 2-87
  - HP Windows/9000, 2-72
  - in ALLBASE/4GL, 2-37
  - in ALLBASE/QUERY, 2-39
  - in COBOL, 2-161, 2-164
  - in Lisp, 2-172
  - international software, 2-119
  - networking, 2-103, 2-108, 2-111
  - recalling, modifying, and re-executing with shells, 2-19
- commands, learning, 2-23
- command syntax, 2-13
- command syntax, looking up, 2-8
- command syntax, networking, 2-97
- C programming
  - checking programs with **lint**, 2-123
  - controlling source code, 2-123
  - data types and alignments, 2-159
  - debugging programs with **cdb**, 2-123
  - examples, 2-158
  - m4** macro preprocessor, 2-123
  - managing program development with **make**, 2-123
  - performing lexical analysis with **lex**, 2-123
  - tutorials, 2-158

- using standard library routines, 2-123
- using the optimizer, 2-159
- using **yacc** compiler-compiler, 2-123

### C Shell

- changing to Bourne or Korn, 2-19
- completing pathnames, 2-19
- login scripts, modifying, 2-19
- login scripts, understanding, 2-19
- recalling, modifying, and re-executing commands, 2-19
- using, 2-17

**courses** (terminal-independent I/O programming), 2-124

## D

- data management
  - ALLBASE/SQL, 2-25
  - developing applications, 2-33
  - error messages in HP SQL, 2-28
  - in Ada, 2-41
  - querying databases, 2-39
  - using Interactive SQL, 2-26
  - with ALLBASE/SQL, 2-27
  - with C, 2-30
  - with FORTRAN, 2-29
  - with Pascal, 2-32
- debugging
  - assembly-language programs, 2-137
  - COBOL programs, 2-162
  - in BASIC, 2-149
- debugging C programs with **cdb**, 2-123
- device drivers
  - Graphics Kernel System (GKS), 2-58
  - graphics programming, 2-45
- device files, setting up, 2-11
- Device I/O Library, using, 2-124
- DIL (Device I/O Library), using, 2-124
- diskless cluster
  - troubleshooting, 2-4
- diskless clusters, 2-11
  - managing, 2-10

## Index-2

- disk space
  - troubleshooting, 2-4
- DOS Coprocessor
  - auto-booting DOS, 2-177
  - configuring, 2-177
  - configuring to use HP-UX devices, 2-178
  - installing, 2-177
  - learning about DOS, 2-178
  - localizing DOS for native languages, 2-178
  - looking up DOS 3.3 commands, 2-181
  - looking up DOS 3.3 command syntax, 2-182
  - using DOS 3.3 utilities, 2-181
  - using features, 2-178
- drivers
  - graphics device, 2-49
  - Graphics Kernel System (GKS) devices, 2-58
- drivers, device
  - graphics programming, 2-45
- E**
- edit, ex, and ed** text editor, 2-14
- editing
  - creating interactive COBOL screens, 2-163
  - in BASIC, 2-142, 2-147
  - with **edit, ex, and ed**, 2-14
  - with **sed**, 2-14
  - with **vi**, 2-8, 2-14, 2-22
- editing text, 2-23
- editors
  - learning about, 2-20
  - setting up **vi** environment, 2-20
  - vi** commands, 2-20
- electronic mail, using, 2-17
- error messages
  - in ALLBASE/4GL, 2-37
  - in BASIC, 2-148-149, 2-154
  - in COBOL, 2-162
  - in international software, 2-119
- error messages, understanding, 2-8
- example programs
  - in C, 2-158
  - in Pascal, 2-174
- External Data Representation protocol, using, 2-107
- F**
- file formats, 2-13, 2-97
  - networking, 2-103, 2-108, 2-111
- files
  - device, 2-13
  - editing with **vi**, 2-22
  - formats, 2-13, 2-97
  - in BASIC, 2-147
  - making copies of remote, 2-109
  - managing, 2-8, 2-18
  - remote access, 2-101
  - remote transfer, 2-101
  - special, 2-13
  - transferring, 2-85-86, 2-92, 2-100
- filesets, looking up, 2-8
- file system
  - troubleshooting, 2-4
- file systems
  - creating, 2-8
  - maintaining, 2-8
- file systems ,managing, 2-10
- file systems, managing, 2-11
- floating-point accelerator (FPA), using, 2-126
- font management, 2-56
- format, file, 2-13
- formatting text, 2-23
- FORTTRAN
  - graphics reference, 2-51, 2-59
  - programming, 2-166
- FORTTRAN programming
  - m4** macro preprocessor, 2-123

## G

glossary, system administration, 2-11  
graphics  
  Advanced Graphics Package, 2-46  
  ANSI standard for GKS, 2-60  
  creating in Starbase, 2-55  
  demonstration programs, 2-62  
  device-independent, 2-44  
  display list programming, 2-61  
  font management, 2-56  
  GKS, using from Ada, 2-64  
  Graphics Kernel System (GKS), 2-57  
  learning how to create, 2-55  
  programming for beginners, 2-52  
  programming in BASIC, 2-141, 2-150, 2-155  
  programming with device drivers, 2-45  
  Starbase Integer Interface programming, 2-47  
  Starbase, using in Ada, 2-65  
  using Starbase in X11 programs, 2-48  
  using Starbase library routines, 2-54  
  writing device drivers, 2-43  
graphics programming, 2-63  
groups ,managing, 2-10

## H

HP 3000  
  logging onto from an HP-UX system, 2-101  
HP-GKS  
  quick reference, 2-59  
HP OSF/Motif  
  appearance and behavior, 2-81  
  programming, 2-80  
  programming with widgets, 2-79  
  standards, 2-81  
HP-UX  
  basic commands, 2-18  
  installing, 2-9  
  logging in, 2-18

logging out, 2-18  
mail, sending and receiving, 2-18  
managing files and directories, 2-18  
POSIX conformance, 2-127  
security, 2-6  
security, maintaining, 2-18  
shutting down, 2-8  
starting, 2-8  
tutorial introduction, 2-18  
HP-UX system  
  backing up, 2-10  
  constructing, 2-10  
  customizing, 2-10  
  LP spooler, setting up and administering, 2-10  
  managing clusters, 2-10  
  managing file systems, 2-10  
  managing groups, 2-10  
  managing run levels, 2-10  
  starting, 2-10  
  stopping, 2-10  
  updating, 2-10  
HP Windows/9000  
  commands, 2-71  
  font management, 2-56  
  interacting with, 2-71  
  programming, 2-71  
HP Windows/9000, using, 2-8

## I

information about Series 300 learning products, locating, 2-21  
input/output (I/O)  
  in BASIC, 2-144, 2-151  
installing applications on AXE, 2-8  
installing AXE (Application Execution Environment), 2-9  
installing HP-UX, 2-9  
installing interface cards, 2-7  
installing PE (Programming Environment), 2-9



- installing peripherals, 2-7
- interface cards
  - installing, 2-7
- interprocess communication, 2-95

## K

- kernel
  - creating AXE, 2-8
- Korn Shell
  - changing to Bourne or C, 2-19
  - completing pathnames, 2-19
  - login scripts, modifying, 2-19
  - login scripts, understanding, 2-19
  - recalling, modifying, and re-executing commands, 2-19
  - using, 2-17
  - using line editing features, 2-19

## L

- learning commands, 2-23
- learning product information (Series 300),
  - locating, 2-21
- lexical analysis, performing with `lex`, 2-123
- `lex`, performing lexical analysis with, 2-123
- libraries
  - networking, 2-103, 2-108, 2-111
- libraries, subroutines, 2-13
- library routines, using standard C, 2-123
- library routine syntax, networking, 2-97
- line printer spooler
  - troubleshooting, 2-4
- Link Level Access (LLA)
  - creating applications, 2-94
  - learning about, 2-94
  - programming, 2-94
- `lint` program checker, 2-123
- localization, 2-119
- logging in, 2-18
- logging out, 2-18

- login, 2-11
- login shell scripts
  - modifying, 2-19
  - understanding, 2-19
- LP spooler, setting up and administering, 2-10

## M

- `m4` macro preprocessor, 2-123
- mail
  - sending and receiving, 2-18
- mail, electronic, 2-17
- `mailx` command, using, 2-17
- `make` program-development management tool, 2-123
- managing files, 2-8
- manuals (Series 300), locating, 2-21
- menu-driven applications, selecting, 2-8
- migration
  - Network Services/HP 9000, 2-101
- `mm` memorandum macros, using with `nroff`, 2-15
- MS-DOS
  - learning commands, 2-180
  - using, 2-178

## N

- Native Language Input Output subsystem
  - commands, 2-120
  - configuration, 2-118
  - font descriptions, 2-117
  - host conversion input, 2-120
  - input methods, 2-120
  - installation, 2-118
  - Japanese input, 2-121
  - keyboard functions, 2-120
  - programming, 2-117
  - supported hardware, 2-118
  - using, 2-117
- network

- interprocess communication programming, 2-96
- Network File System
  - configuring, 2-106
  - installing, 2-106
  - maintaining, 2-106
- networking
  - Access Control List, 2-105
  - BIND name server, 2-110
  - commands, 2-103, 2-108, 2-111
  - concepts, 2-104
  - configuring LAN software, 2-98
  - configuring X.25/9000, 2-89
  - creating applications that access X.25/9000, 2-88
  - creating applications using LLA, 2-94
  - device files, 2-105
  - External Data Representation protocol, 2-107
  - file formats, 2-103, 2-108, 2-111
  - file transfers, 2-101
  - initializing X.25/9000, 2-89
  - installing ARPA Services, 2-110
  - installing LAN software, 2-98
  - installing SNA3179G, 2-100
  - installing SNA3270, 2-85
  - installing SNA3770, 2-92
  - installing SNALink, 2-86
  - installing X.25/9000, 2-89
  - internetwork mail routing with **send-mail**, 2-110
  - interprocess communication, 2-95
  - learning about Link Level Access (LLA), 2-94
  - libraries, 2-103, 2-108, 2-111
  - listing remote host information, 2-109
  - listing remote user information, 2-109
  - Lock Manager, 2-105
  - logging, 2-98
  - logging onto an HP 3000 from an HP-UX system, 2-101
  - maintaining ARPA Services, 2-110
  - maintaining LAN software, 2-98
  - migrating from RFA to NFS, 2-105
  - named pipes, 2-105
  - NFS, using in cluster, 2-105
  - NS error messages, 2-101
  - OSI model, 2-104
  - packet routing with **gated**, 2-110
  - programming examples, 2-96
  - programming with LLA, 2-94
  - remote command execution, 2-109
  - remote copying, 2-109
  - Remote Execution Service, 2-105
  - remote file access, 2-101
  - remote file transfer, 2-109
  - remote login, 2-109
  - remote login to an HP 3000 from an HP-UX system, 2-102
  - reviewing Berkeley IPC basics for X.25/9000, 2-88
  - routing network mail, 2-109
  - shutting down X.25/9000, 2-89
  - SNA/9000 command reference, 2-87
  - system calls, 2-103, 2-108, 2-111
  - tracing, 2-98
  - transferring files via SNA3179G, 2-100
  - transferring files via SNA3270, 2-85
  - transferring files via SNA3770, 2-92
  - transferring files via SNALink, 2-86
  - troubleshooting ARPA Services, 2-110
  - troubleshooting LAN, 2-98
  - troubleshooting SNA3179G, 2-100
  - troubleshooting SNA3270, 2-85
  - troubleshooting SNA3770, 2-92
  - troubleshooting SNALink, 2-86
  - troubleshooting X.25/9000, 2-90
  - using interprocess communications, 2-96
  - using remote procedure calls, 2-107
  - using SNA3179G, 2-100
  - using SNA3270, 2-85

- using SNA3770, 2-92
- using SNALink, 2-86
- using X.25/9000 network logging, 2-90
- using X.25/9000 network tracing, 2-90
- Yellow Pages protocol, 2-107

**Network Services**

- configuring, 2-102
- installing, 2-102
- maintenance, 2-102
- overview, 2-104
- troubleshooting, 2-102

network troubleshooting

- UUCP, 2-4

**NFS Services**

- overview, 2-104

**NLIO**

- commands, 2-114, 2-116
- Simplified Chinese input, 2-113
- Traditional Chinese input, 2-115

**NLIO subsystem**

- commands, 2-120
- configuration, 2-118
- font descriptions, 2-117
- host conversion input, 2-120
- input methods, 2-120
- installation, 2-118
- Japanese input, 2-121
- keyboard functions, 2-120
- programming, 2-117
- supported hardware, 2-118
- using, 2-117

**nroff** text formatter, using, 2-15

**P**

**PAM**, using, 2-8

panic, system, 2-4

partitions, looking up, 2-8

**Pascal**

- graphics reference, 2-53

pathname completion, in the Korn and C Shells, 2-19

PE, installing, 2-9

peripherals

- accessing from BASIC, 2-142
- adding, 2-8
- installing, 2-7

peripherals, using, 2-11

**Personal Applications Manager**, using, 2-8

porting code among languages, 2-156

**POSIX**, HP-UX conformance with, 2-127

pragmas

- in Ada, 2-133

program development, managing with **make**, 2-123

programming

- Ada reference, 2-130
- Advanced Graphics Package, 2-46
- ANSI standard for GKS, 2-60
- Berkeley IPC examples, 2-95
- calling C from BASIC, 2-141
- calling FORTRAN from BASIC, 2-141
- calling Pascal from BASIC, 2-141
- calling routines from other languages, 2-156
- checking programs with **lint**, 2-123
- consulting a glossary, 2-11
- controlling source code, 2-123
- converting COBOL programs, 2-163
- creating applications using LLA, 2-94
- creating network applications, 2-96
- database management with C, 2-30
- database management with FORTRAN, 2-29
- database management with Pascal, 2-32
- debugging assembly-language programs, 2-137
- debugging C programs with **cdb**, 2-123
- device-independent graphics, 2-44
- differences among Lisp implementations, 2-168

- display lists in graphics, 2-61
- font management, 2-56
- graphics, 2-63
- graphics demonstration programs, 2-62
- graphics device drivers, 2-49
- graphics for beginners, 2-52
- Graphics Kernel System (GKS), 2-57
- graphics quick reference, 2-50-51, 2-53, 2-59
- HP-UX Technical BASIC, 2-146
- HP Windows/9000, 2-71
- in 68000 assembly language, 2-136
- in Ada, 2-41, 2-64-65, 2-131
- in BASIC, 2-141-145, 2-147-151, 2-153
- in C, 2-158
- in COBOL, 2-161
- in FORTRAN, 2-166
- in HP-UX, 2-123
- in Lisp, 2-168
- in M68010/20/30 assembly language, 2-137
- in MC68020 assembly language, 2-138
- in Pascal, 2-174
- input/output control, 2-144
- learning Starbase graphics, 2-55
- login, 2-11
- m4 macro preprocessor, 2-123
- managing file systems, 2-11
- managing program development with **make**, 2-123
- MC68881 floating-point coprocessor, 2-139
- Network Interprocess Communication (NetIPC), 2-96
- network, RPC Program Compiler, 2-105
- performing lexical analysis with **lex**, 2-123
- porting code between HP-UX systems, 2-128
- porting code to and from HP-UX systems, 2-128
- setting up device files, 2-11
- terminal I/O with **curses**, 2-124
- terminal I/O with **terminfo**, 2-124
- understanding clusters, 2-11
- understanding memory management, 2-11
- understanding networking, 2-11
- understanding processes, 2-11
- understanding system accounting, 2-11
- using interprocess communications, 2-95
- using LLA, 2-94
- using peripherals, 2-11
- using remote procedure calls, 2-107
- using standard C library routines, 2-123
- using Starbase graphics in X11 programs, 2-48
- using Starbase graphics library routines, 2-54
- using system calls, 2-123
- using the Device I/O Library (DIL), 2-124
- using UUCP routines, 2-16
- using **yacc** compiler-compiler, 2-123
- with Ada, 2-134
- with graphics device drivers, 2-45
- with the floating-point accelerator (FPA), 2-126
- with the Starbase Integer Interface, 2-47
- writing graphics device drivers, 2-43
- X Window System, 2-82
- Programming Environment, installing, 2-9

**Q**

- quick reference for UNIX, 2-23

## R

- radiosity, in graphics programming, 2-63
- ray tracing, in graphics programming, 2-63
- reference, command, 2-13
- reflections, in graphics programming, 2-63
- remote job entry
  - reference, 2-91
  - system administration, 2-91
  - troubleshooting, 2-91
  - using, 2-91
- remote login
  - to an HP 3000 form an HP-UX system, 2-102
- remote procedure calls, using, 2-107
- RJE
  - reference, 2-91
  - system administration, 2-91
  - troubleshooting, 2-91
  - using, 2-91
- run levels, managing HP-UX, 2-10

## S

- SCCS (Source Code Control System),
  - using, 2-123
- screen editing, 2-22
- security
  - Access Control List network interactions, 2-105
  - adding group assets, 2-6
  - adding users, 2-5
  - administration, 2-6
  - audit log entries, 2-5
  - converting to a secure (trusted) system, 2-5
  - deleting group assets, 2-6
  - deleting users, 2-5
  - file access, 2-6
  - in database management, 2-33, 2-38
  - limiting `setuid` program risks, 2-5
  - maintaining, 2-18
  - mounting file systems, 2-5
  - setting audit file monitor daemon, 2-5
  - setting audit log file parameters, 2-5
  - system administration, 2-6
  - system backup, 2-5
  - system recovery, 2-5
  - system shutdown, 2-5
  - turning auditing on/off, 2-5
  - unmounting file systems, 2-5
  - viewing audit log records, 2-5
- `sed` text editor, 2-14
- shadows and shading, in graphics programming, 2-63
- Shared Resource Manager
  - commands, 2-99
  - installing, 2-99
  - reference, 2-99
- shells
  - changing among Bourne, Korn, and C, 2-19
  - choosing among Bourne, Korn, and C, 2-19
  - differences among Bourne, Korn, and C, 2-19
  - line editing in Korn, 2-19
  - login scripts, modifying, 2-19
  - login scripts, understanding, 2-19
  - recalling, modifying, and re-executing commands, 2-19
  - using, 2-17
- shell scripts, login
  - modifying, 2-19
  - understanding, 2-19
- shutting down HP-UX, 2-8
- SoftPC
  - configuring for use with HP-UX devices, 2-180
  - installing, 2-179
  - learning about DOS, 2-180

- localizing DOS for native languages, 2-180
- looking up DOS 3.3 commands, 2-181
- looking up DOS 3.3 command syntax, 2-182
- using DOS 3.3 utilities, 2-181
- using features, 2-180
- spooler, line printer
  - troubleshooting, 2-4
- SQL
  - accessing from Ada, 2-41
  - commands, 2-25, 2-29-30, 2-32
  - commands, Interactive SQL, 2-26
  - C Preprocessor, 2-30
  - database design, 2-27
  - error messages, 2-28
  - FORTRAN Preprocessor, 2-29
  - Interactive SQL, using, 2-26
  - using the Pascal preprocessor, 2-32
  - warnings, 2-28
- SRM
  - commands, 2-99
  - installing, 2-99
  - reference, 2-99
- standards
  - POSIX, 2-127
- Starbase
  - adding text to pictures, 2-52
  - display lists, 2-61
  - font management, 2-56
  - graphics device drivers, 2-49
  - Integer Interface programming, 2-47
  - manipulating color, 2-52
  - manipulating image elements, 2-52
  - quick reference, 2-50-51, 2-53
  - reference, 2-54
  - tutorial, 2-55
  - using graphics routines, 2-54
  - using in Ada, 2-65
  - writing graphics device drivers, 2-43
  - writing graphics programs, 2-52
- starting an HP-UX system, 2-10
- starting HP-UX, 2-8
- startup problems, 2-4
- stopping an HP-UX system, 2-10
- stream editing with `sed`, 2-14
- subroutine libraries, 2-13
- syntax
  - creating Pascal programs, 2-175
  - in COBOL, 2-161
- syntax of commands, 2-13
- syntax of commands, looking up, 2-8
- syntax of commands, networking, 2-97
- syntax of library routines, networking, 2-97
- syntax of system calls, networking, 2-97
- system administration
  - adding peripherals, 2-8
  - adding users, 2-8
  - backing up an HP-UX system, 2-10
  - constructing an HP-UX system, 2-10
  - consulting a glossary, 2-11
  - creating an AXE kernel, 2-8
  - creating file systems, 2-8
  - customizing an HP-UX system, 2-10
  - in database management, 2-33, 2-38
  - installing applications on AXE, 2-8
  - international software, 2-119
  - login, 2-11
  - LP spooler, setting up and administering, 2-10
  - maintaining file systems, 2-8
  - managing clusters, 2-10
  - managing files, 2-8
  - managing file systems, 2-10
  - managing groups, 2-10
  - managing HP-UX run levels, 2-10
  - managing users, 2-10
  - remote job entry, 2-91
  - setting up device files, 2-11
  - shutting down HP-UX, 2-8
  - starting HP-UX, 2-8, 2-10

- stopping HP-UX, 2-10
- system shutdown, 2-11
- system startup, 2-11
- understanding clusters, 2-11
- understanding memory management, 2-11
- understanding networking, 2-11
- understanding processes, 2-11
- understanding runlevels, 2-11
- understanding system accounting, 2-11
- updating AXE, 2-8
- updating HP-UX, 2-10
- using peripherals, 2-11
- system calls, 2-13
  - networking, 2-103, 2-108, 2-111
- system calls, using, 2-123
- system call syntax, networking, 2-97
- system panic
  - troubleshooting, 2-4
- system shutdown, 2-11
- system startup, 2-11
- system startup problems, 2-4

## T

- tbl** table processor, using with **nroff**, 2-15
- terminal
  - troubleshooting, 2-4
- terminal I/O
  - with **curses**, 2-124
  - with **terminfo**, 2-124
- terminal, virtual, 2-17
- terminfo** (terminal-independent I/O programming), 2-124
- text editing, 2-23
  - with **vi**, 2-8, 2-22
- text editors, learning about, 2-20
- text formatting, 2-23
- text processing
  - with **awk**, 2-14
  - with **mm** memorandum macros, 2-15

- with **nroff**, 2-15
- with **tbl** table processor, 2-15
- troubleshooting
  - diskless cluster, 2-4
  - disk space, 2-4
  - file system, 2-4
  - LAN, 2-98
  - line printer spooler, 2-4
  - system panic, 2-4
  - system startup, 2-4
  - terminal, 2-4
  - UUCP, 2-4
- tutorials on UNIX, 2-23
- type conversions
  - restrictions in Ada, 2-133

## U

- UNIX
  - editing text, 2-23
  - formatting text, 2-23
  - learning about, 2-23
  - learning commands, 2-23
  - practicing with tutorials, 2-23
  - quick reference, 2-23
- updating HP-UX, 2-10
- updating HP-UX (AXE only), 2-8
- users
  - adding, 2-8
  - managing, 2-10
- UUCP
  - programming, 2-16
  - setting up, 2-16
  - troubleshooting, 2-4
  - using, 2-16

## V

- vi** editor
  - commands, 2-20
  - setting up environment, 2-20
- virtual terminal, using, 2-17
- vi** text editor, 2-8, 2-14, 2-22

**vt** command, using, 2-17

## **W**

window interface systems  
using, 2-8

## **X**

### **X11**

font management, 2-56  
using Starbase graphics, 2-48

### **X.25**

overview, 2-104

### **X.25/9000**

configuring, 2-89  
creating applications, 2-88  
initializing, 2-89  
installing, 2-89  
reviewing Berkeley IPC, 2-88  
shutting down, 2-89  
troubleshooting, 2-90  
using network logging, 2-90  
using network tracing, 2-90

### **X400**

overview, 2-104

### **X Window System**

adding input devices, 2-78  
arranging displays on one or more screens, 2-78  
arranging for remote access, 2-78  
changing the color database, 2-78  
consulting a list of commands and widgets, 2-77  
consulting HP Widgets man pages, 2-74  
converting programs from Windows/9000, 2-83  
correcting installation problems, 2-78  
creating FORTRAN bindings, 2-76  
customizing at the system level, 2-75  
customizing at the user level, 2-75  
customizing the keyboard, 2-78

customizing the startup file, 2-78

displaying native-language character sets,  
2-78

font management, 2-56

installing, 2-78

learning about, 2-73

learning management functions, 2-73

looking up Xlib routines, 2-76

organizing the environment, 2-73

programming, 2-76, 2-82

programming with HP Widgets, 2-74

programming with R3 Xt Intrinsics, 2-82

programming with Xt Intrinsics, 2-74

running clients, 2-75

setting system defaults, 2-78

studying example configuration files, 2-73

using, 2-75

using client programs, 2-73

using from BASIC/UX, 2-152

using Starbase graphics, 2-48

using the keyboard instead of the  
mouse, 2-78

### **X Window System (version 10)**

building a field editor, 2-67

consulting library routine man pages,  
2-68

creating dialogs, 2-67

creating FORTRAN bindings, 2-67

installing, 2-69

looking up commands, 2-69

porting X10 applications to X11, 2-67

programming, 2-68

using, 2-69

using field editors, 2-67

using intrinsics, 2-67

## **Y**

**yacc** compiler-compiler, 2-123

**Yellow Pages**



configuring, 2-106  
maintaining, 2-106

Yellow Pages protocol, using, 2-107





**HEWLETT  
PACKARD**

**HP Part Number  
98594-90081**

Printed in U.S.A. E0989



**98594 - 90681**

**For HP Internal Use Only**