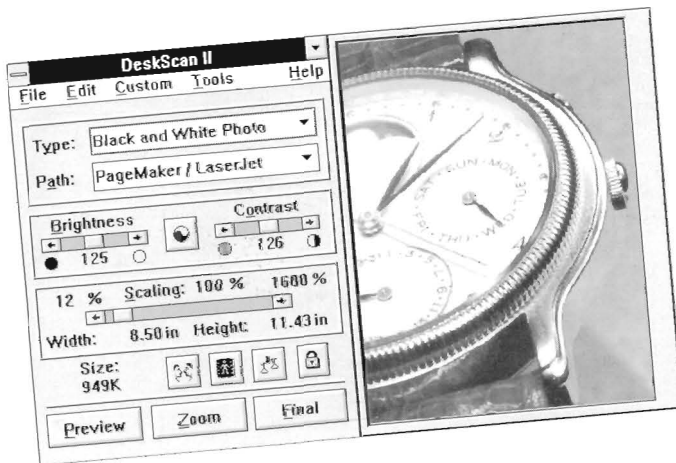


HP DeskScan II

Quick Reference Guide

Microsoft® Windows version



Steps to Scanning

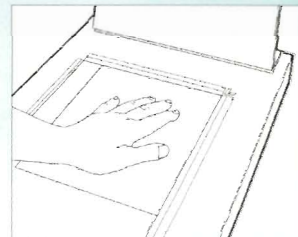
Place an image on the scanner copyboard.

1 Click **Preview**.

Make adjustments (optional)

- adjust the selection area
- change the exposure settings
- choose a new image type
- select a different print path
- sharpen the image
- scale the image to the right size

2 Click **Final**.



Preview

Final

HP Computer Museum
www.hpmuseum.net

For research and education purposes only.

Front Panel

Determines how the image is scanned and processed

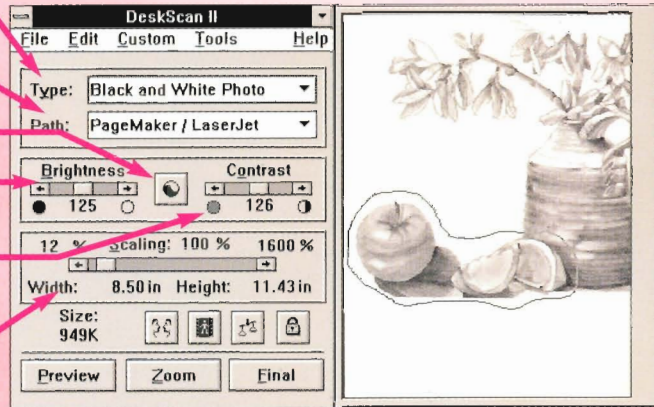
Lists print path calibrations

Automatic exposure

Adjusts the balance of light and dark shades in an image

Adjusts the range between the lightest and darkest shades

Adjusts the size of the image



Negative image

Mirror image

Uniform/Non-Uniform scaling

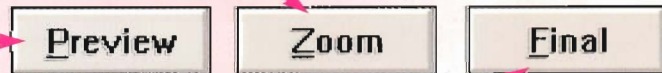
Lock/Unlock image size



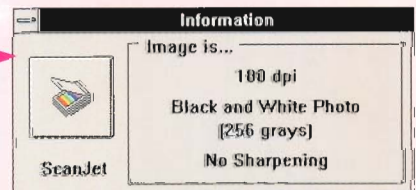
Magnifies the selected area

Provides a fast, low resolution scan

Scans the selected area and saves to a file



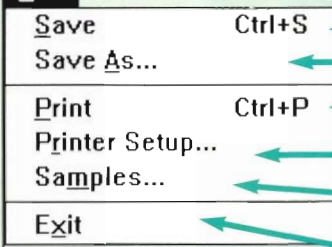
Shows resolution, image type, and scanning source



Scanner Information tool

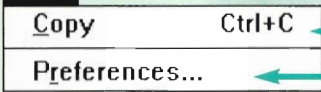
Menus

File



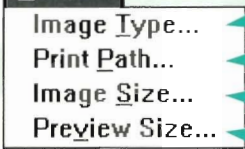
- ← Saves the file to an existing name
- ← Saves and renames the file (similar to **Final** button)
- ← Prints a copy of the selected area
- ← Selects printing options
- ← Prints several pages of the image with different halftone options
- ← Exits HP DeskScan II software

Edit



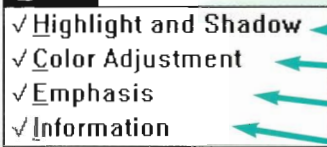
- ← Copies the image to the Clipboard
- ← Sets preferences for Automatic Find, Automatic Type, and Automatic Exposure

Custom

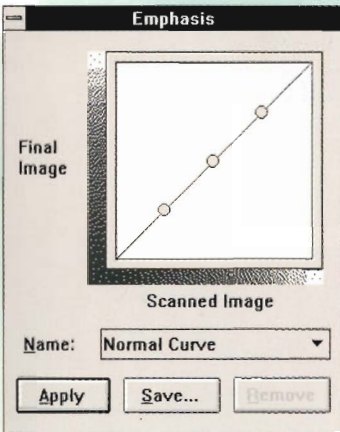


- ← Provides options for sharpening and for alternate halftone and gray scale processing
- ← Sets the scanning resolution manually and calibrates the print path
- ← Selects an exact image size for the selected area
- ← Sets the Preview Area size

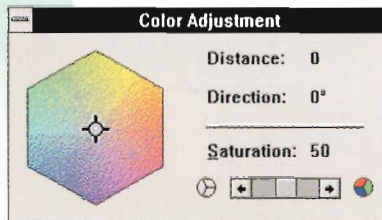
Tools



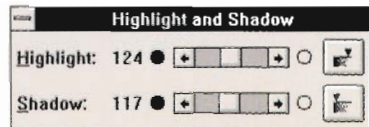
- ← Selects the highlight and shadow points
- ← Adjusts hue and saturation of color images
- ← Adjusts the midtones of black and white images
- ← Displays scanner source and settings information



Emphasis tool



Color Adjustment tool



Highlight and Shadow tool

Scanning With TWAIN

TWAIN allows you to scan an image while you are working in another software application. For most TWAIN compliant applications, just select **Acquire** to scan an image.

Scanning From a Transparency Adapter

- 1 Install HP DeskScan software and the transparency adapter.
- 2 Turn on the transparency adapter.
- 3 Place a slide or transparency in the transparency guide and lower the transparency adapter onto the copyboard glass.
- 4 Click **Preview**.
- 5 Click **Zoom** and adjust the selection area.
- 6 Click **Final**.

Scanning a Non-Rectangular Area (Lasso tool)

- 1 Click **Preview**.
- 2 Note the selection box in the Preview Area.
- 3 Click the mouse button on the Preview Area outside of the selection box.
- 4 Press the **Control** key and hold it down while redrawing a selection area with the mouse.

Acquire...

Select Source...

