

HP 250 Decision Support Graphics



DSG/250

Description

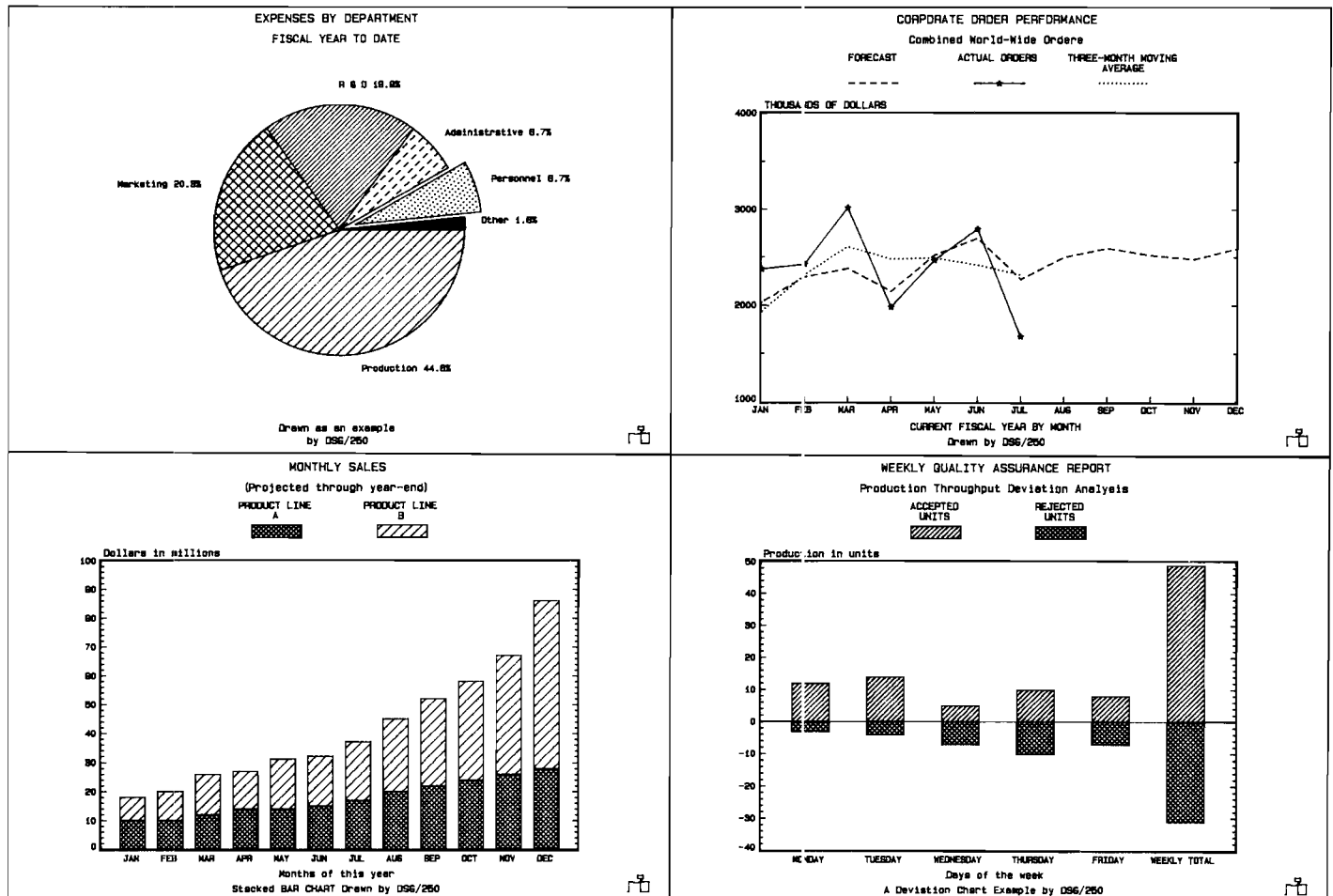
45150A

HP 250 Decision Support Graphics (DSG/250) is an interactive application for the creation of charts and graphs using the HP 250 Office Computer and HP Graphics Plotters. A variety of chart types are supported—line charts, pie charts, bar charts, deviation charts and scattergrams. Charts can be drawn on paper or

transparent media. DSG/250 makes full use of HP 250 Graphics Plotting Library features. A menu and softkey-driven format make DSG/250 easy to learn and easy to use.

DSG/250 can be used from Personal Workstations, Remote/250s and/or the integral workstation of desk-based HP 250s, and is fully multi-user subject only to the availability of graphics plotters on the system.

Example Charts Produced by DSG/250



HP Computer Museum
www.hpmuseum.net

For research and education purposes only.

Features

- Allows the novice user to design and produce professional-quality business charts first time, every time.
- Offers storage and retrieval of chart designs for periodic updating and use, or for design-by-modification.
- Data files are easily constructed and modified using DSG/250, or data can be taken from any suitably formatted DATA type file.
- Chart design is independent of data; data can be modified or updated without changing the chart specifications.
- Chart design is independent of the actual plotting device; the same chart can be easily drawn on different plotters.
- HP 250 softkeys and fill-in-the-blanks interface make DSG/250 easy to learn and easy to use.
- Built-in example of each chart type offers self-teaching capability.
- Sensible defaults for chart characteristics minimize the user interaction required to produce pleasing charts. Default values may be modified by the user, either temporarily for the next chart, or permanently to serve as future default values.
- Automatic size scaling and positioning allows from 1 to 4 charts to be plotted per page.
- Chart specification and data preparation can be done by several users simultaneously.
- "Last Chart" capability allows quick review and modification of the last chart created.
- Plotter configuration is specified once and stored, eliminating the need to do this for each chart.

Documentation

For further information refer to:

<i>DSG/250 User's Manual</i>	45150-90010
<i>Operating the HP 250</i>	45260-90002

The *DSG/250 User's Manual* is designed for first-day productivity by a HP 250 user with no graphics experience. It includes information on running sample charts to learn by example, and a reference section.

Operating the HP 250 is a general operator's manual. The chapter "Graphics Devices" includes the device details for all supported plotters—such as how to change pens and paper.

Hardware Environment

DSG/250 requires the following HP 250 hardware:

- Any HP 250 Office Computer with 64K byte user memory partition.
- Asynchronous Serial Interface port.
- HP supported plotting device (RS232C interface).
Plotters supported by DSG/250:
 - HP 7220A/C/S/T* — 4 & 8 Pen Graphics Plotter
 - HP 7221A/B/C/S/T* — 4 & 8 Pen Graphics Plotter
 - HP 7225A/B — Single Pen Graphics Plotter
RS232C Option
 - HP 7470A — 2 Pen Graphics Plotter with
RS232C Option

*HP 7220/7221 S/T have automatic chart advance.

Software Environment

DSG/250 requires the Graphics Plotting Library which is included as part of the HP 250 OS 4 System Software shipped with each HP 250. Customers with an earlier version of the system software can purchase an upgrade. See your HP sales representative.

DSG/250 requires the FORMS, TRIG, PACK, and TIO DROMs to be configured.