

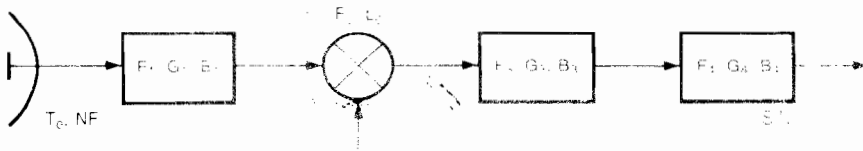


HEWLETT  
PACKARD

# RF & Microwave AppCAD

---

Application Engineering Staff  
Microwave Semiconductor Division

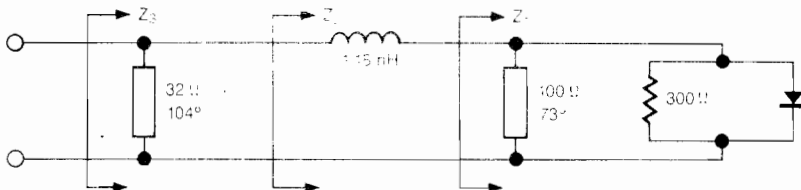


**AppCAD** is the program that places your own, personal Application Engineer on your computer to help make your design job easier.

**AppCAD** is a unique combination of *computerized Application Notes* and *RF design tools* combined with an *interactive product selection guide* that helps you design and analyze your circuit and then find just the right part to meet your specifications.

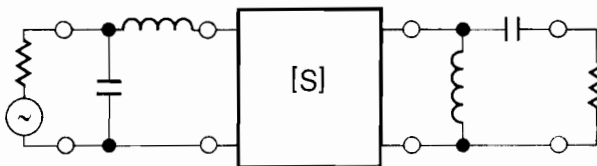
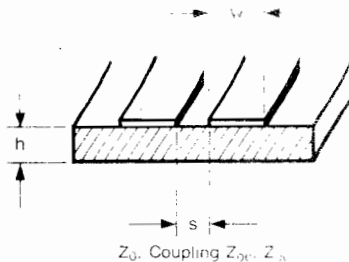
Features like *menus*, *on-line help*, and *windows* make **AppCAD** easy to use to save you time.

And, if you need more help, we've included a built-in request for technical literature, a sample request for prototyping, and contacts to call for more information.



## Contents

- Two-port Analysis
  - Thermal Design
    - PIN Switch Design
    - Mixer Spurious Search
    - Mixer Spurious Search
      - Transmission Lines & Couplers
      - Cascade Noise Analysis
      - Transistor Bias Circuits
      - Interactive Selection Guide
      - Request for Literature
      - S-parameter data files
      - Transistor Design Data
      - Spiral Inductor Design
      - Impedance Matching
      - Sample Request
- ... and more





## **Equipment needed to run this program:**

- IBM PC/XT/AT/compatible or HP Vectra computer with hard disk and 512K of RAM
- CGA, EGA, or VGA color or Hercules compatible monochrome monitor
- MS-DOS® 2.0 or higher

MS-DOS is a registered trademark of  
Microsoft Corporation

Not copy protected

Printed in USA 0190  
HP Part No. HAPP-0001  
© Hewlett-Packard Co., 1990

Hewlett-Packard Company  
Application Engineering Department  
Microwave Semiconductor Division  
350 W. Trimble Road  
San Jose, California 95131