

**HP AdvanceNet**

**HP OpenView Windows  
User's Guide**



**Edition 2  
E1289**

**32048-90001  
Printed in U.S.A. 12/89**

# Notice

---

**Hewlett-Packard makes no warranty of any kind with regard to this material, including, but not limited to, the implied warranties of merchantability and fitness for a particular purpose.** Hewlett-Packard shall not be liable for errors contained herein or for incidental or consequential damages in connection with the furnishing, performance, or use of this material.

Hewlett-Packard assumes no responsibility for the use or reliability of its software on equipment that is not furnished by Hewlett-Packard.

Copyright 1989, Hewlett-Packard Company.

This document contains proprietary information, which is protected by copyright. All rights are reserved. No part of this document may be photocopied, reproduced, or translated to another language without the prior written consent of Hewlett-Packard Company. The information contained in this document is subject to change without notice.

**Hewlett-Packard Co.  
19420 Homestead Rd.  
Cupertino, CA 95014 U.S.A.**

Microsoft<sup>®</sup> and MS-DOS<sup>®</sup> are registered trademarks of Microsoft Corporation.

# Printing History

---

New editions are complete revisions of the manual. Update packages, which are issued between editions, contain additional and replacement pages to be merged into the manual by the customer. The dates on the title page change only when a new edition or a new update is published. No information is incorporated into a reprinting unless it appears as a prior update; the edition does not change when an update is incorporated.

Note that many product updates and fixes do not require manual changes and, conversely, manual corrections may be done without accompanying product changes. Therefore, do not expect a one-to-one correspondence between product updates and manual updates.

<b>Edition 1</b> . . . . .	December 1988
<b>Edition 2</b> . . . . .	December 1989

**HP Computer Museum**  
**[www.hpmuseum.net](http://www.hpmuseum.net)**

**For research and education purposes only.**



# List of Effective Pages

---

The List of Effective Pages gives the date of the current edition and of any pages changed in updates to that edition. Within the manual, any page changed since the last edition is indicated by printing the date the changes were made on the bottom of the page. Changes are marked with a vertical bar in the margin. If an update is incorporated when an edition is reprinted, these bars are removed but the dates remain. No information is incorporated into a reprinting unless it appears as a prior update.

## Pages

## Effective Date

All . . . . . December 1989



# Contents

---

## Chapter 1 Introduction

Manual Organization . . . . .	1-2
HP OpenView Windows Overview . . . . .	1-4
HP OpenView Windows Hardware and Software . . . . .	1-7

## Chapter 2 Installation

Re-installation of HP OpenView Windows Workstation . . . . .	2-2
--	-----

## Chapter 3 Getting Started

Installing and Using the Getting Started with HP OpenView Windows Tutorial . . . . .	3-2
Tutorial Contents . . . . .	3-2
Using the Tutorial . . . . .	3-2
What You Should Know Before Using HP OpenView Windows . . . . .	3-4
Understanding HP OpenView Windows Dialog Boxes . . . . .	3-5
Printing . . . . .	3-8
Window Size . . . . .	3-8
Getting Help . . . . .	3-9

## Chapter 4 OVDDraw

OVDDraw Overview . . . . .	4-3
OVDDraw Window . . . . .	4-4
OVDDraw Menus . . . . .	4-6
File Menu . . . . .	4-7
New Map . . . . .	4-7
Open Map . . . . .	4-8
Save Map . . . . .	4-9
Save Map As . . . . .	4-9
Print Object List . . . . .	4-10
Exit . . . . .	4-11



About	4-11
Picture Menu	4-12
New Picture	4-13
Erase Picture	4-14
Get Picture	4-14
Name Picture	4-15
Set Top Picture	4-16
Delete Picture	4-17
Print Picture	4-18
Edit Menu	4-19
Move	4-19
Add	4-20
Connect	4-22
Cut	4-23
Copy	4-23
Paste	4-23
Describe	4-24
Select	4-26
Options Menu	4-26
Grid	4-26
Zoom	4-26
Check Consistency	4-27
Help Menu	4-28

## Chapter 5 OVDRAW Tutorial

Run OVDRAW	5-3
Add Symbols	5-4
Describe the Symbols	5-8
Name Your Picture	5-10
Continue Creating the Rest of the Map Pictures	5-11
Save Your Map	5-12

## Chapter 6 OVAdmin

HP OpenView Windows Menu	6-3
Set Default Map	6-3
Set Message Queue Size	6-5
Set Status Propagation	6-5
Set Maximum Number of Symbols	6-5
Set Alarm Notification Time Interval	6-6
Exit	6-6

About	6-6
Application-Specific Menus	6-7
Help Menu	6-7

## Chapter 7 OVRun

Map Status	7-3
Symbol States	7-3
Symbol Status	7-5
Alarms	7-6
Alarm Notification	7-6
OVRun Window	7-7
OVRun Menus	7-8
OVRun Menu Types	7-8
Selecting Symbols	7-9
Map Menu	7-10
Go To Top	7-11
Go To Previous	7-11
Go To Picture	7-11
Go To	7-12
Print Picture	7-13
Print Object List	7-14
Map Legend	7-15
Change Map	7-15
Zoom	7-17
Exit	7-17
About	7-17
Monitor Menu	7-18
Describe	7-19
Identify	7-19
Show Alarms	7-20
Diagnose Menu	7-21
Read Parameters	7-21
Self Test	7-21
Control Menu	7-22
Download	7-22
Upload	7-22
Set Parameters	7-23
Reset Parameters	7-23
Help Menu	7-23

## **Appendix A Error Messages**

Additional Features Error Messages . . . . .	A-50
--	------

## **Appendix B Template Window**

Subpictures . . . . .	B-2
Computers . . . . .	B-2
Components . . . . .	B-3
Line Types . . . . .	B-4
Text Styles . . . . .	B-4

## **Appendix C Additional Features**

LanProbe Converter . . . . .	C-1
NewWave Bridge . . . . .	C-4
Use Selection List . . . . .	C-5
Selection List . . . . .	C-5
Command Buttons . . . . .	C-6
Save Selection List . . . . .	C-7
Terminal Connection . . . . .	C-9

## **Glossary**

## **Index**

# Figures

---

Figure 1-1. Microsoft Windows Control and HP OpenView Windows Menus . . . . .	1-5
Figure 3-1. Sample HP OpenView Application Dialog Box . . . . .	3-5
Figure 3-2. Sample List Selector Box . . . . .	3-7
Figure 3-3. Help Window . . . . .	3-9
Figure 3-4. Help Dialog Box with Command Buttons . . . . .	3-11
Figure 4-1. OVDRAW Window . . . . .	4-4
Figure 4-2. OVDRAW Menu Diagram . . . . .	4-6
Figure 4-3. Save Current Map Dialog Box . . . . .	4-7
Figure 4-4. Open Map Dialog Box . . . . .	4-8
Figure 4-5. Save Map As Dialog Box . . . . .	4-9
Figure 4-6. Print Object List Dialog Box . . . . .	4-11
Figure 4-7. New Picture Dialog Box . . . . .	4-13
Figure 4-8. Get Picture Dialog Box . . . . .	4-14
Figure 4-9. Name Picture Dialog Box . . . . .	4-15
Figure 4-10. Set Top Picture Dialog Box . . . . .	4-16
Figure 4-11. Delete Picture Dialog Box . . . . .	4-17
Figure 4-12. Print Picture Dialog Box . . . . .	4-18
Figure 4-13. Replace Name Dialog Box . . . . .	4-24
Figure 4-14. Check Consistency Dialog Box . . . . .	4-28
Figure 5-1. Addition of One Subnet Symbol . . . . .	5-5
Figure 5-2. Addition of LAN . . . . .	5-6
Figure 5-3. Computer Symbols Connected to LAN . . . . .	5-7
Figure 5-4. Describe Dialog Box . . . . .	5-8
Figure 5-5. Describe Subnet Dialog Box . . . . .	5-10
Figure 6-1. OVAdmin Window . . . . .	6-2
Figure 6-2. Set Default Map Dialog Box . . . . .	6-4
Figure 7-1. OVRUN Window . . . . .	7-7
Figure 7-2. Go To Picture Dialog Box . . . . .	7-11
Figure 7-3. Go To Dialog Box . . . . .	7-12
Figure 7-4. Print Picture Dialog Box . . . . .	7-13
Figure 7-5. Print Object List Dialog Box . . . . .	7-14

Figure 7-6. Change Map Dialog Box . . . . .	7-15
Figure 7-7. Default Describe Dialog Box . . . . .	7-19
Figure 7-8. Show Alarms Dialog Box . . . . .	7-20
Figure B-1. Subpicture . . . . .	B-2
Figure B-2. Sample Computers . . . . .	B-2
Figure B-3. Sample Components . . . . .	B-3
Figure C-1. File Selector Dialog Box . . . . .	C-5
Figure C-2. Save Object List Dialog Box . . . . .	C-7
Figure C-3. Delete Dialog Box . . . . .	C-8

# Tables

---

Table 4-1. Edit Modes, Cursors, and Hot Spots . . . . .	4-19
Table 7-1. Symbol States . . . . .	7-4



# Introduction

---

HP OpenView Windows is a family of network management tools for local and wide area multivendor networks. HP OpenView Windows is a User interface based on MS-DOS and Microsoft Windows and runs on the HP Vectra which is the HP OpenView Windows workstation.

HP OpenView Windows software enables you to:

- Create a graphical network map of your actual network topology.
- Change the colors of objects on your map to show the status of the objects at a glance.
- Monitor, diagnose, and control objects on the network using the pull down menus.

You can also buy specific network management software to keep your network functioning efficiently. Throughout this manual, such software is referred to as **application-specific**. All of the application-specific software packages run on the HP OpenView Windows workstation.

This chapter consists of the following major topics:

- Manual Organization
- HP OpenView Windows Overview
- HP OpenView Windows Hardware and Software



---

# Manual Organization

This manual is written for Network Managers who are responsible for drawing the network map and setting up the HP OpenView Windows workstation.

It is also useful for Data Communications Specialists who are responsible for troubleshooting, and for Distributed Systems Operators responsible for monitoring the network.

**Chapter 1, Introduction**, provides Network Managers with a list of the HP OpenView Windows workstation hardware and software, and presents an overview of the three programs that make up HP OpenView Windows software: OVAdmin; OVDraw; and OVRun.

**Chapter 2, Installation**, presents Network Managers and Data Communications Specialists with detailed instructions for installing the HP OpenView Windows software on an HP OpenView Windows Vectra workstation.

**Chapter 3, Getting Started**, is written for all users, this chapter provides instructions for the tutorial *Getting Started with HP OpenView Windows*. It discusses the basic concepts you should understand before using HP OpenView Windows: how to print with HP OpenView Windows; an explanation of the HP OpenView Windows help facility; and some common command buttons used by HP OpenView Windows.

**Chapter 4, OVDraw**, provides Network Managers reference information for using the OVDraw program that allows you to represent your network graphically on the HP OpenView Windows workstation.

**Chapter 5, OVDraw Tutorial**, teaches Network Managers how to create a sample network map.

**Chapter 6, OVAdmin**, provides Network Managers and Data Communications Specialists, with information about the HP OpenView Windows Administer menu that allows you to set default configurations for HP OpenView Windows and HP OpenView applications.

**Chapter 7, OVRun**, is written for all users, and provides information about how status and alarms are displayed in HP OpenView Windows. It also describes the menu items used when running the various HP OpenView applications.

**Appendix A, Error Messages**, lists HP OpenView Windows error messages with problem resolution information.

**Appendix B, Template Window**, is useful for Network Managers as it lists various types of computers and components found in the Template window of OVDDraw.

**Appendix C, Additional Features**, lists the additional software options available for HP OpenView Windows.

---

# HP OpenView Windows Overview

HP OpenView Windows runs under the Microsoft Windows environment and contains three programs:

- **OAdmin:** Allows you to perform administrative functions, such as assigning passwords and setting up network management parameters.
- **OVDraw:** Allows you to draw your network map.
- **OVRun:** Allows you to run HP OpenView applications using the HP OpenView Windows interface and map.

Figure 1-1 lists the menus associated with each of the three HP OpenView Windows programs as well as the Microsoft Windows control menu.

## Microsoft Windows Control Menu

Restore  
Move  
Size  
Minimize  
Maximize  
Close

## OVRun

Map	Monitor	Diagnose	Control	Help
Go to Top	Describe	Read Parameters	Upload	OpenView Windows
Go to Previous	Identify	Self Test	Download	Index
Go to Picture	Show Alarms		Set Parameters	Application-Specific
Go to			Reset Parameters	Indexes
Print Picture				
Print Object List				
Map Legend				
Change Map				
Zoom				
Exit				
About				

**Figure 1-1. Microsoft Windows Control and HP OpenView Windows Menus**

## OVAdmin

OpenView	Application-Specific	Help
Set Default Map		OpenView Windows
Set Message Queue Size		Index
Set Status Propagation		Application-Specific
Set Maximum Number of Symbols		Indexes
Set Alarm Notification Time Interval		
Exit		
About		

## OVDDraw

File	Picture	Edit	Options	Help
New Map	New Picture	Move	Grid	OpenView Windows
Open Map	Erase Picture	Add	Zoom	Index
Save Map	Get Picture	Connect	Check Consistency	
Save Map As	Name Picture	Cut		
Print Object List	Set Top Picture	Copy		
Exit	Delete Picture	Paste		
About	Print Picture	Describe		
		Select		

**Figure 1-1. Microsoft Windows Control and HP OpenView Windows Menus (con't)**

---

# HP OpenView Windows Hardware and Software

Each HP OpenView Windows workstation contains the following:

## **Software:**

The following software versions or greater.

- MS-DOS 3.2
- Microsoft Windows 2.1
- HP OpenView Windows
- Office Share III

## **Standard Hardware:**

- Vectra model ES-12 Model 42 (40MByte hard disk and 5.25 floppy disk drive)
- ES Expanded Memory
- HP Video Graphics Display
- HP Video Graphics Adapter
- HP Mouse
- Microsoft Windows compatible printer (optional)

This user's guide refers you to other application-specific manuals as needed.





# Installation

---

To install HP OpenView Windows onto your hard disk, do the following:

1. Install MS-DOS by following the instructions in your MS-DOS manual.
2. Install OfficeShare by following the instructions in your OfficeShare manual. (Only if required by the application you are using.)
3. Install Microsoft Windows by following the instructions in your Microsoft Windows manual. (Be sure to install the printer.)
4. Insert the disk labeled HP OpenView Windows into the A drive.
5. Type A:, then press **ENTER**.
6. Type SETUP, then press **ENTER**.
7. Follow the instructions displayed on the screen.

The default drives are as follows:

- Microsoft Windows: C:\Windows
- HP OpenView Windows: C:\OV
- Microsoft Windows WIN.INI: C:\Windows

You have the option of changing these to best suit your configuration.



---

# Re-installation of HP OpenView Windows Workstation

Re-installation of software on the HP OpenView Windows Workstation is necessary if the hard disk is ever replaced. If you have full backups, follow your backup program instructions for restoring all files. Otherwise, follow these steps to bring the workstation back to operating condition:

1. Assemble the following:

Setting Up Vectra manual & software

Microsoft MS-DOS manuals & software

Microsoft Windows manual & software

HP OpenView Windows User's Manual & software

OfficeShare manuals & software

HP OpenView Application(s) manual(s) and software

Backups of user files

2. **Record Network Address:** If a ThinLan HP Vectra link card was replaced (P/N 50927F), record the Network Address with the rest of your network information for future reference. The Network Address is found on a sticker on the card itself, or can be read using the `\NETWORK\DIAGNET` diagnostic.

3. **Configure workstation:** To prepare the workstation for software installation, refer to the *Setting Up Vectra* manual. After booting from the Setup program disk, select Option 1, Set System Configuration. While in the Set System Configuration menu, use all defaults except for the Primary Display. Use option 0 to specify VGA instead of default HP Multimode.

4. **Initialize the hard disk** (option 4 of Setup main menu): This will take approximately 45 minutes.

- 5. Partition disks and install MS-DOS:** Boot the workstation from the MS-DOS Startup disk to get a PAM menu. Select MS-DOS menu item. Insert Setup disk. Run the autopart program to partition physical Drive 1. (NOTE: Do not insert the Setup disk or run the autopart program, if you are using your workstation to run DTC Manager.) Use the default to partition the disk into one 32 MB partition and a large extension partition (not 20/20 split). Continue with remainder of MS-DOS software installation.
- 6. Install Microsoft Windows:.** Refer to the Microsoft Windows User's Guide. Use the Setup program on the Windows Setup disk and install software into the default directory C:\Windows. The software should be configured for an HP Vectra VGA with no extended memory. To install the printer, select the HP ThinkJet option on LPT1.
- 7. Install HP OpenView Windows:** Refer to the HP OpenView Windows User's Manual. Use the Setup program on the HP OpenView1 disk and install software into the default directory C:\OV.
- 8. Install OfficeShare:** Refer to the OfficeShare manuals. Use the Install program on the User Utilities-LAN disk and install into suggested default directory c:\network. Continue with remainder of OfficeShare installation. Use USRCONF to configure the Workstation Name. Enter a unique IP Address and record it for future reference. At the Hardware menu screen (under the Workstation menu), change the interface card I/O address and interrupt channel defaults from 300 and 3 to 300 and 5.
- 9. Re-install all HP OpenView applications.**
- 10. Re-install user files from backups.** If a customized WIN.INI file has been backed up, use it to overwrite the default one loaded with Microsoft Windows.

For reference, the HP OpenView Windows Workstation hardware switch settings are as follows:

**ES/12 Processor**

	Position	1	2	3	4	5	6
SW1		on	off				
SW2	(default)	off	on				
SW3		on	off	on	on	on	on
SW4	(default)	on	on	on	on	on	on

**Video Graphics Adapter**

off      off      off      off

**Expanded Memory**

default on all five switches (closed position)

**OfficeShare**

restrap the interrupt level from 3 to 5

# Getting Started

---

This chapter consists of the following major topics:

- Installing and Using the *Getting Started with HP OpenView Windows* tutorial
- What You Should Know Before Using HP OpenView Windows
- Understanding HP OpenView Windows Dialog Boxes
- Printing
- Using the Help file and Error Messages

---

# Installing and Using the Getting Started with HP OpenView Windows Tutorial

The Getting Started with HP OpenView Windows tutorial provides you with an introduction to HP OpenView Windows and how it is used with HP OpenView applications. HP recommends that you use the tutorial prior to using any of the HP OpenView Windows programs (OVDraw, OVRun and OVAdmin). The rest of this manual assumes that you are familiar with the concepts presented in the tutorial.

## Tutorial Contents

The tutorial contains the following lessons:

- Introduction
- Overview of Microsoft Windows
- HP OpenView Windows Layout
- HP OpenView Windows Map
- Using HP OpenView Windows

## Using the Tutorial

To use the tutorial MS-DOS must be installed on your Vectra. Since the tutorial is self-contained, you do not need to have HP OpenView Windows or Microsoft Windows installed to use the tutorial. Instructions for installing HP OpenView Windows are presented in the *Installation* chapter of this manual.

For speed and convenience when using the tutorial, HP recommends that you install the tutorial (contained on two floppy disks) onto your hard disk. To do this, do the following:

1. Insert the disk labeled Disk #1 into the A: drive.
2. Type **a:INSTALL** from MS-DOS, then press **ENTER**. This creates a directory on your C: drive called LEARN.
3. At the **Insert Disk #2** prompt, replace Disk #1 with Disk #2 in the A: drive.
4. At the **C:\>** prompt, type **cd\learn**. The directory changes to the LEARN directory.

To use the tutorial from the **C:\LEARN>** prompt, type **LEARN**, then press **ENTER**.

---

# What You Should Know Before Using HP OpenView Windows

This manual assumes that you are familiar with Microsoft Windows. If necessary, refer to the Microsoft Windows manual and the *Getting Started with HP OpenView Windows Tutorial* packaged with this manual, to learn about the following concepts:

Running a program

Minimizing and maximizing a program

Clicking and double clicking on a symbol

Opening an icon

Understanding dialog boxes

Moving, sizing and closing windows

Scrolling

Understanding pull-down menus, list selector and keyboard functions

Understanding command buttons, option buttons and check boxes

Editing with Microsoft Windows notepad

Configuring a printer

You may need to do a soft reset if your computer doesn't respond to a keystroke or mouse click. To do a soft reset simply press the **CTRL-ALT-DEL** keys at the same time. Be careful resetting the workstation this way, as it is possible to lose data.

---

**Note** Run the Setup Program to verify that the system based memory is set to 640K, if not, correct it.

---

# Understanding HP OpenView Windows Dialog Boxes

HP OpenView Windows dialog boxes contain several other boxes or buttons from which you can select, enter, or view information. The following figure is an example of an HP OpenView application dialog box. A description of some of the various boxes and buttons follows.

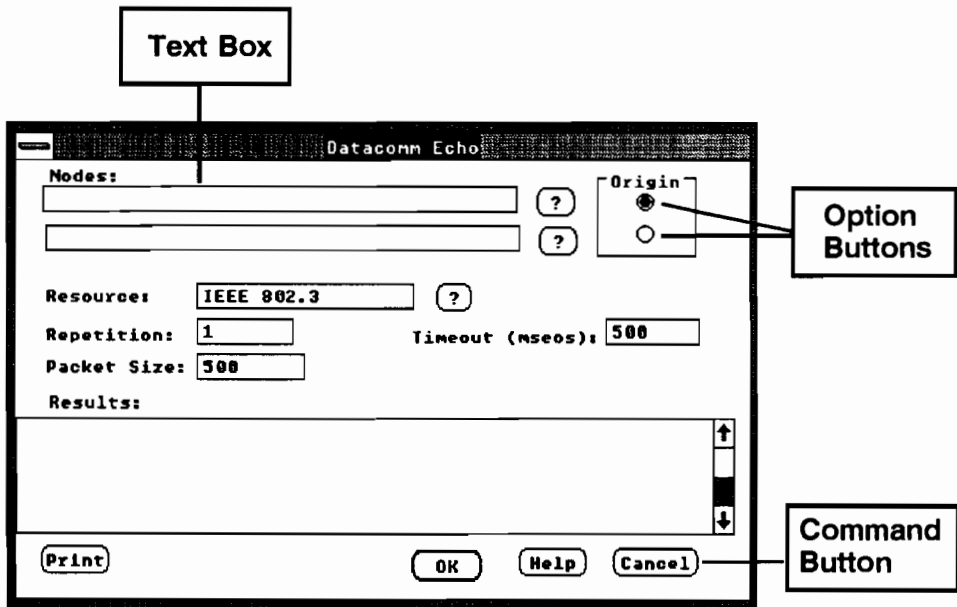


Figure 3-1. Sample HP OpenView Application Dialog Box



<b>Text Box</b>	The part of a dialog box where you type data.
<b>Check Box</b>	A small square box that allows you to make a choice. Click on the check box to select the option. An <i>X</i> in the check box indicates the item is selected. Click again on the check box to deselect that choice.
<b>Option Button</b>	A small circular area within a dialog box that represents a choice. Click on an option button to select your choice. When an option button is chosen, it appears as a circle with a black dot in it. You can select only one option button from each group of option buttons.
<b>Command Button</b>	A word surrounded by a rounded box. By clicking the mouse on the word, you select that function. For example, clicking on the Help command button takes you to the Help for the current window. Most HP OpenView Windows dialog boxes contain the following standard command buttons: <ul style="list-style-type: none"> <li><b>Print:</b> Prints the information in the current dialog box. The amount of information printed may vary depending on the dialog box.</li> <li><b>OK:</b> Performs the function associated with the current dialog box. For example, by pressing OK from the <i>Save File</i> dialog box, the file is saved.</li> <li><b>Help:</b> Views help for the current dialog box.</li> <li><b>Cancel:</b> Exits the current dialog box.</li> </ul>

## List Selector Box

A dialog box that contains a list of files from which you can choose a file to view, from the currently listed directory, or change directories to select another file. To view the list selector box click on ? from a dialog box. The following dialog box includes a list selector and list selector box.

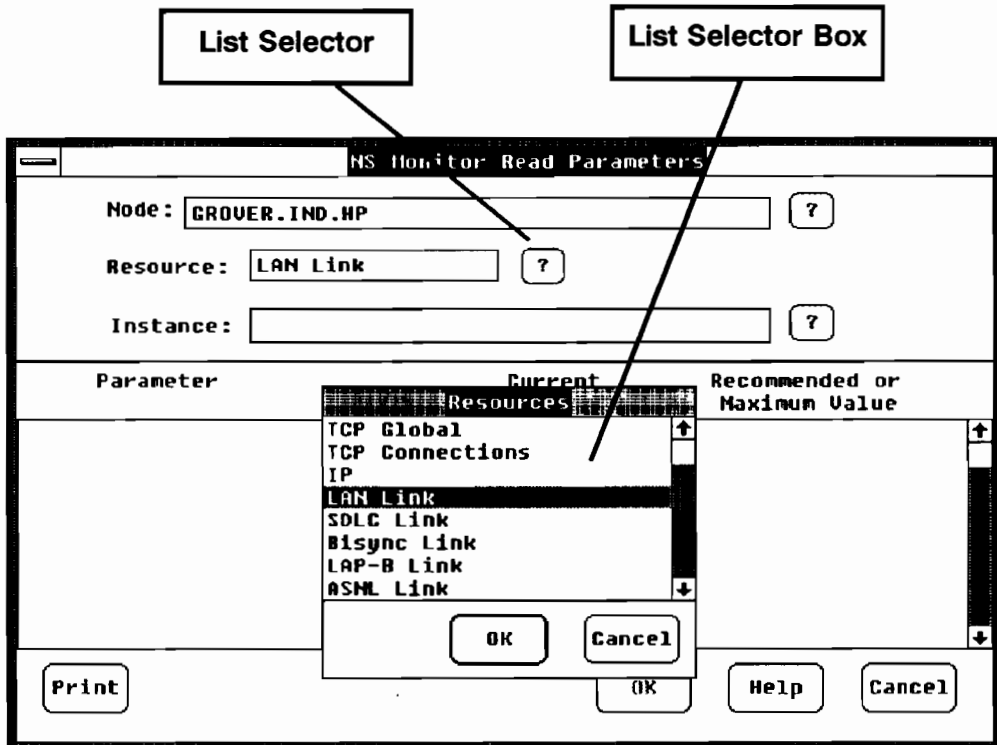


Figure 3-2. Sample List Selector Box

More information on using dialog boxes, is presented in the *Getting Started with HP OpenView Windows* tutorial. These terms are also included in the *Glossary* of this manual as well as the Microsoft Windows manual.

---

## Printing

HP OpenView Windows uses the Microsoft Windows print spooler. Therefore, the printer you have configured for Microsoft Windows is the printer used by HP OpenView Windows. In this manual, this printer is referred to as the workstation printer. If you don't have a printer configured for Microsoft Windows, HP OpenView Windows is not able to print.

If you want to print the HP OpenView Windows pictorial representation of your network (map), the printer configured for Microsoft Windows must be capable of printing graphics.

Use the Microsoft Windows CONTROL.EXE program to configure your printer. You may configure more than one printer for your workstation, but only one can be the **active printer**. The currently active printer is the one that HP OpenView Windows uses for printing. Refer to your Microsoft Windows manual for information on CONTROL.EXE.

---

## Window Size

OV Windows remembers the last position of the main window in OVAdmin, OVDraw, and OVRun, and the Template Window in OVDraw. Any window that is resized will remain in that position.

# Getting Help

Each HP OpenView Windows menu item has help associated with it. This help provides you with brief information to help you use the menu item.

You can access help two ways:

- **Help Command Button:** Each dialog box contains a Help command button. By clicking on the Help command button, you can access help on how to use the dialog box.
- **Help Index:** Each HP OpenView application contains an index of its specific help topics. By clicking on the Help menu from HP OpenView Windows, you can view a list of help indexes. Click on the help index you want to view. From the index, you can click on any of the topics to view the help for the topic you select.

Below is an example help window.

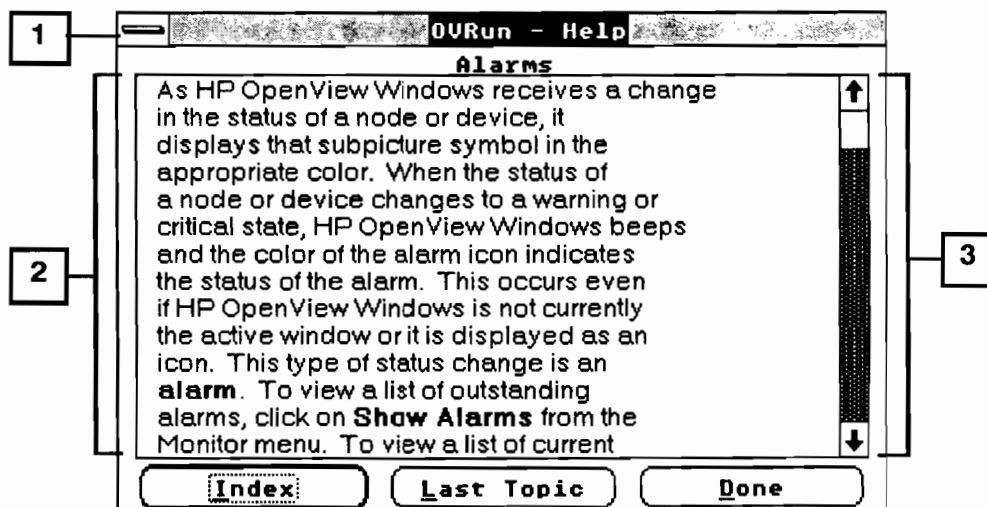


Figure 3-3. Help Window

The help window contains the following:

- (1) **Microsoft Windows Control Box:** Lists the Microsoft Windows Control menu items. By double clicking on this icon you can exit the help window.
- (2) **Help Dialog Box:** The area of the help window where the help is displayed. The help dialog box contains the following command buttons:
  - Index:* Allows you to view the index of help topics for the application you've selected.
  - Last Topic:* Allows you to return to the last help topic you were viewing.
  - Done:* Allows you to exit the help dialog box.
- (3) **Scroll Bar:** Allows you to scroll up and down the help text.

Each help may also contain **command buttons** that allow you to jump to a specific part of the help. If you click on one of these command buttons, the information associated with that command button is displayed. You can then continue to scroll through the help from that point, or click on Last Topic to return to the part of help you were viewing originally.

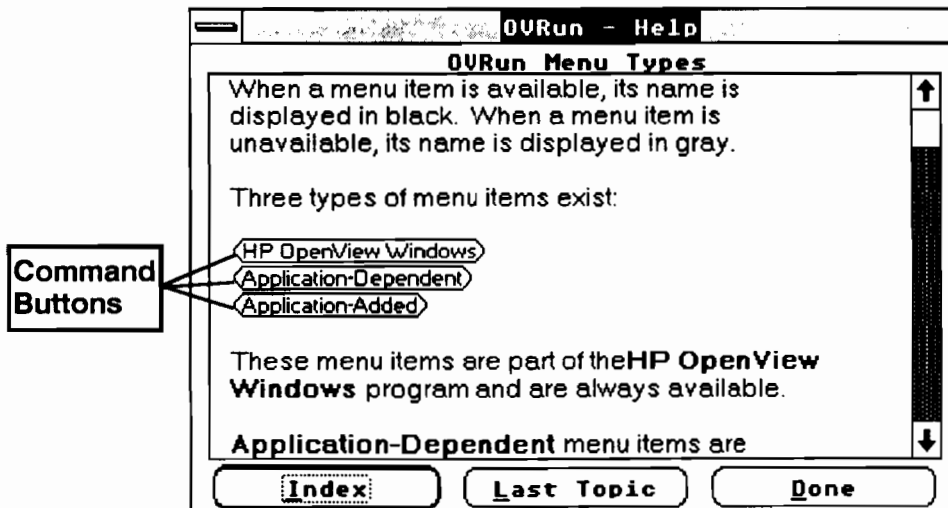


Figure 3-4. Help Dialog Box with Command Buttons

HP OpenView error message boxes contain a help button. When you select this help button, the cause and the action for the error displays. Error messages are also included on-line as part of the Help files. See Appendix A for text of the Error Messages.



## OVDraw

---

This chapter describes the menus associated with OVDraw. OVDraw allows you to graphically represent your network map on the screen.

To run OVDraw, do one of the following:

- From PAM select the **OVDraw** selection.
- From MS-DOS (for example, C:\WINDOWS or D:\WINDOWS) type: **win OVDraw**
- From Microsoft Windows MS-DOS Executive program double click on **OVDraw.EXE**. Depending on how your system is configured, you may have to first click on the appropriate directory where you have the HP OpenView Windows programs stored.

---

**Warning** Although Microsoft Windows allows you to run several programs simultaneously, you can not have two OVDraw sessions running simultaneously.

---



This chapter consists of the following major topics:

- OVDraw Overview
- OVDraw Window
- OVDraw Menus

The next chapter, *OVDraw Tutorial*, provides a step-by-step example for creating a sample map.

---

## OVDraw Overview

Before drawing your map you need to understand some of the OVDraw terminology. In the following paragraphs, OVDraw terms are printed in **bold** print. OVDraw terms are also listed in the Glossary.

A map represents your entire network and is divided into several pictures. Each picture represents one portion of your network. For example, one picture contains all the computers on one floor of your building while the map contains all the pictures for all the floors in your building.

To create a map, first create and name the individual pictures within the map, then create and name the Top Picture. Usually, the Top Picture contains one subpicture symbol for each picture in the map.

When you name a picture, that one picture is saved temporarily. To save a picture permanently as part of a map, use the **Save Map** menu item.

When you save the map, it is stored permanently on disk, and the map name is displayed in the title bar at the top of the window. Until you save your map, the title is "Untitled". If you have changed the map since the last time you edited it, the title name is followed by an asterisk (\*). You can not save a map with the name *untitled*.

OVDraw provides you with five graphic symbol types: subpictures, computers, components, lines, and text. In general, symbols refer to subpictures, computers and components only.

---

**Note**      See your application manual to determine which type of symbol is available for that application.

---

# OVDraw Window

Below is an example of the OVDraw window.

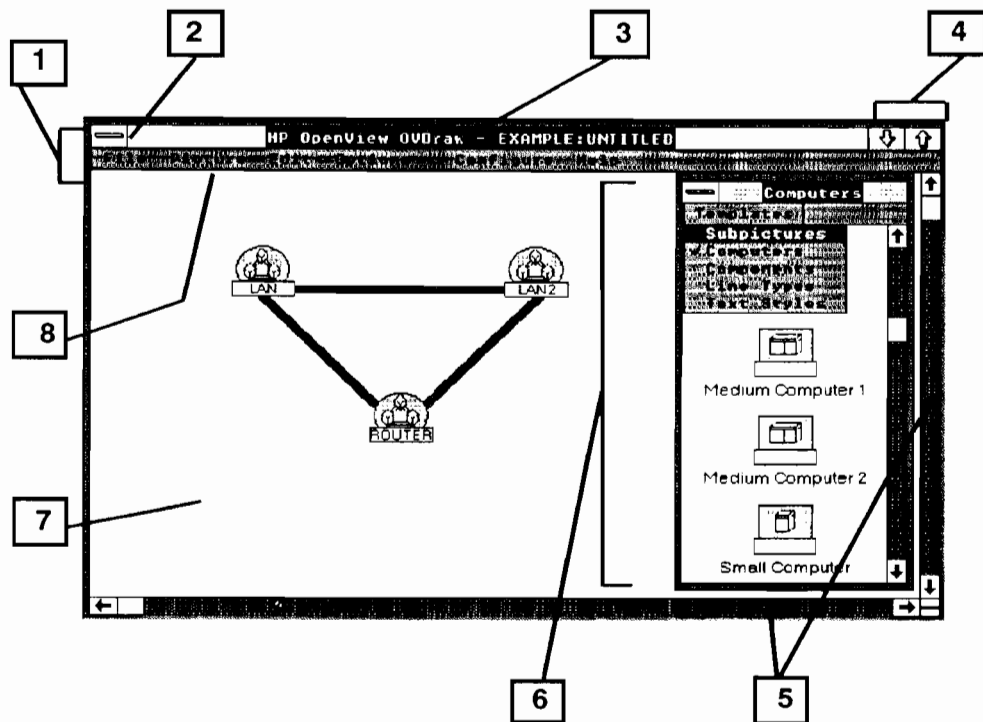


Figure 4-1. OVDraw Window

The OVDDraw window contains the following:

- (1) Caption Bar:
  - (2) Microsoft Windows Control Box: Contains the Microsoft Windows control menu items.
  - (3) Title: Displays the current map and picture names separated by a dash (-). If the picture has been changed an asterisk (\*) follows the name.
  - (4) Size Box: Allows you to maximize or minimize the window.
- (5) Scroll Bars: Allows you to scroll up or down, or left or right within the work area.
- (6) Template Window: Displays the available symbols for OVDDraw. The Template menu within the Template window lets you select and display either the subpictures, computers, components, lines, or text available for selection. See Appendix B for additional information on the Template window.

You can close this window by double clicking on the Microsoft Windows control box within the Template window. Click on **Add** from the Edit menu to re-open this window.

- (7) Work Area: The portion of the window where you create your map.
- (8) Menu Bar: Displays the menus available through OVDDraw.

---

# OVDraw Menu

Each OVDraw menu item is described in the following sections.

## OVDraw

File	Picture	Edit	Options	Help
New Map	New Picture	Move	Grid	HP OpenView
Open Map	Erase Picture	Add	Zoom	Windows
Save Map	Get Picture	Connect	Check	Index
Save Map As	Name Picture	Cut	Consistency	
Print Object List	Set Top Picture	Copy		
Exit	Delete Picture	Paste		
About	Print Picture	Describe		
		Select		

**Figure 4-2. OVDraw Menu Diagram**

## File Menu

File contains the following menu items:

- New Map
- Open Map
- Save Map
- Save Map As
- Print Object List
- Exit
- About

## New Map

When you select New Map the work area is cleared and you can begin creating pictures that are part of your new map. If you have not saved the current map, the following dialog box is displayed.

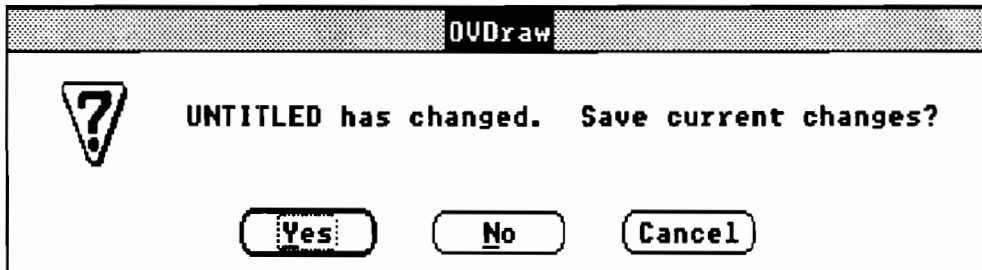


Figure 4-3. Save Current Map Dialog Box

**Yes**

Click on **Yes** if you want to save the map. Once the current map is saved, you can begin working on the new map.

**No**

Click on **No** if you do not want to save the map. Any changes you have made to the current map are not saved.

## Cancel

Click on **Cancel** if you want to return to the map you were editing.

## Open Map

Open Map allows you to display an existing map in the work area and begin editing pictures within that map. When you click on **Open Map**, a dialog box containing all the existing maps for the current directory is displayed. Do one of the following:

- **Type the map file name**, in the *File Name* text box, then click on **OK**. For example: MAPNAME.
- **Click on the displayed map name** you want to edit, then click on **OK**.
- **Select another directory** by typing that directory name in the *File Name* text box, press **ENTER**, or click on the directory name in the list selector box, then click on **OK**. The map file names for that directory are displayed. Click on the map name you want to edit, then click on **OK**.

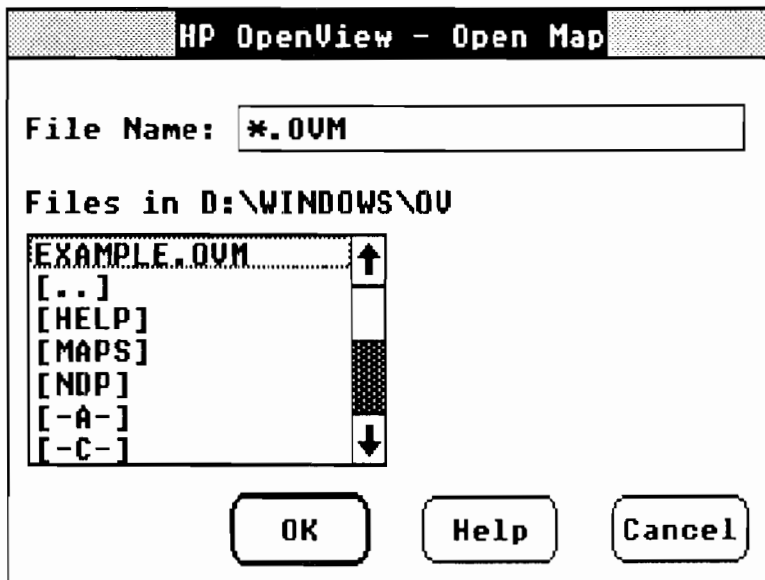


Figure 4-4. Open Map Dialog Box

- When a map is displayed if all symbols appear with question marks inside the symbol, OVDraw is not installed correctly. Please check installation, and re-install if necessary.

If only one or two symbols appear with question marks, they are probably application added symbols. Please check installation of applications that use these symbols.

## Save Map

Save Map allows you to save the current map to disk with the current file name. This menu item is unavailable until you name your map using the Save Map As menu item.

## Save Map As

Save Map As allows you to do either of the following:

- **Save a newly-created map** (one with a current title of “untitled”). Save newly-created maps using Save Map As.
- **Make a copy of a map.** Give the new copy of the map a new name and keep a copy of the old map with the previous name. In the current map, the title changes to the new name.

When you click on **Save Map As**, the following dialog box is displayed.

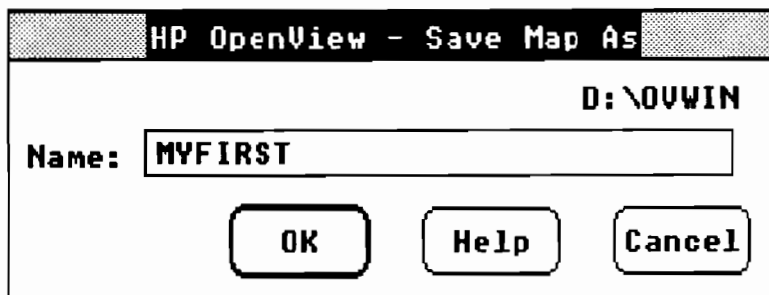


Figure 4-5. Save Map As Dialog Box



Type the name you want to give to this map, then either click on **OK** or press **ENTER**.

Check the upper right-hand corner of the dialog box for the default MS-DOS directory where this map name is stored. If that is the directory where you want to store the map, you do not need to type the directory name. If the directory name listed is not the one where you want to store the map, type the map name, including the directory name, in the text box.

When a map is saved, it is actually saved as three separate files, each with a different extension: .OVM (Graphics), .OVI (Index), .OVD (Data). An application may add other file name extensions so that there may be more than three files.

HP OpenView Windows adds the extensions, so you do not need to be concerned with the three different types of files. However, you do need to be aware of the three files created for each map if you are deleting files from MS-DOS. Check your application manual to see if your application adds other extensions.

## **Print Object List**

Print Object List allows you to print a list of all the symbol names used in the map. The list is printed on the workstation printer.

HP OpenView Windows takes advantage of the Microsoft Windows print spooler program for printing. So, before an object list is printed, it is queued on the Microsoft Windows spooler. The Microsoft Windows spooler icon is automatically displayed when you click on **Print Object List**.

The following dialog box is displayed.



Figure 4-6. Print Object List Dialog Box

- To cancel sending the object list to the spooler click on **Cancel**. If you want to cancel printing the object list, after it has been sent to the spooler, double click on the spooler icon.
- Once the dialog box disappears, the object list is printed as soon as the printer is available. You can continue using OVDDraw.

## Exit

Click on **Exit** to end a session of HP OpenView Windows. A dialog box appears with **OK** and **Cancel** buttons. Click on **OK** to end your HP OpenView Session, or click on **Cancel** to continue.

## About

About provides the version number, release date, and copyright information for your HP OpenView Windows software.

## Picture Menu

The Picture menu contains the following menu items:

- New Picture
- Erase Picture
- Get Picture
- Name Picture
- Set Top Picture
- Delete Picture
- Print Picture

## New Picture

When you click on **New Picture**, the work area is cleared. The title bar changes to *Name - Untitled* . If you have not named the current picture, the following dialog box is displayed.

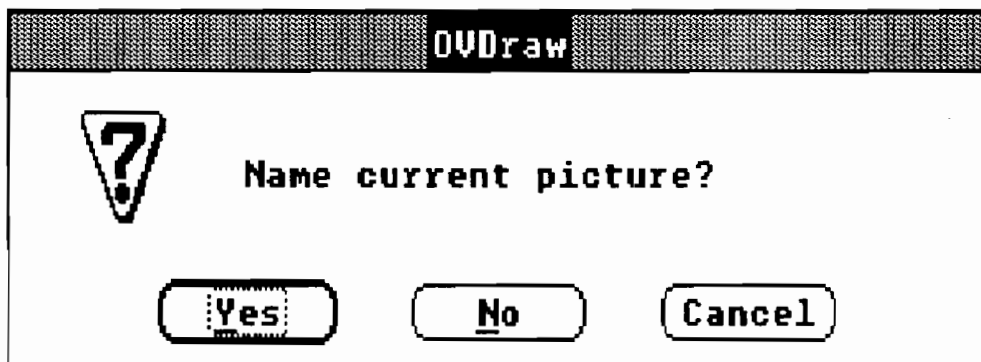


Figure 4-7. New Picture Dialog Box

- |               |   |
|---------------|---|
| <b>Yes</b>    | Click on <b>Yes</b> if you want to name the picture. The Name Picture dialog box is displayed. The Name Picture dialog box contains the OK, Help and Cancel command buttons. If you click on <b>Cancel</b> from the Name Picture dialog box, you return to the picture you were editing. If you do not name the picture, it is deleted. |
| <b>No</b>     | Click on <b>No</b> if you do not want to name the picture. If you do not name the picture, it is deleted.   |
| <b>Cancel</b> | Click on <b>Cancel</b> if you want to return to the picture you were editing.   |

## Erase Picture

Erase Picture allows you to erase all the symbols from the current picture. Delete Picture (listed below) deletes the entire picture from the map. Erase Picture keeps the current picture name in the map, but erases any symbols, including text and lines, in the picture.

Use the Save Map menu item to permanently erase the symbols from the current picture.

## Get Picture

Get Picture allows you to display a picture in the work area for editing. A dialog box listing all the existing pictures for the current map is displayed. Click on the picture you want to edit, then click on OK.

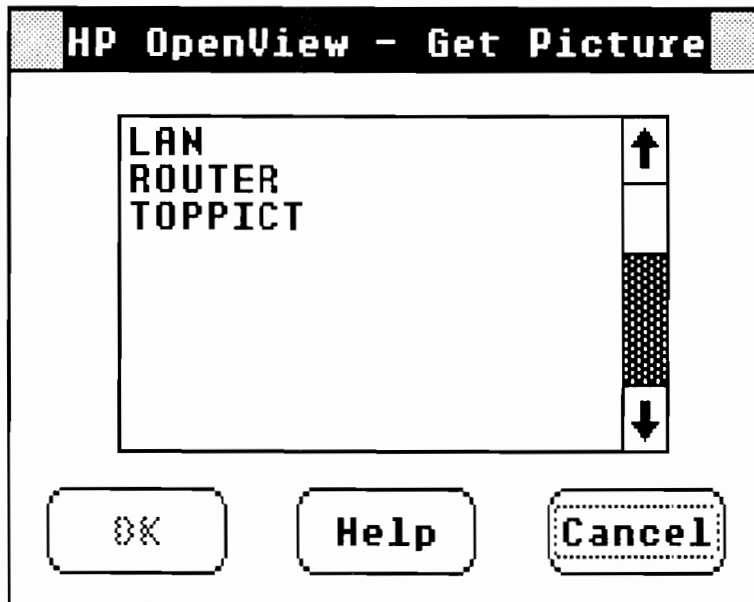


Figure 4-8. Get Picture Dialog Box

## Name Picture

Name Picture allows you to name or rename the currently displayed picture. You still need to use the Save Map menu item to save the picture as part of a map and make the changes permanent. When you click on **Name Picture** the following dialog box is displayed.

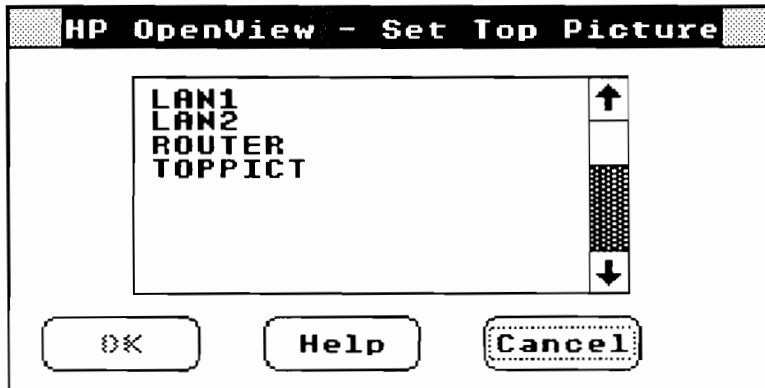


Figure 4-9. Name Picture Dialog Box

Type the picture name, then press **ENTER** or click on **OK**. The picture name can be up to eight characters long. After entering the name in the dialog box, the title bar displays the name you entered.

## Set Top Picture

Set Top Picture allows you to identify which picture you want as the Top Picture. The top picture is the one displayed when you first display a map. The top picture should contain a subpicture symbol for each picture in the map. When you click on **Set Top Picture** the following dialog box is displayed.



**Figure 4-10. Set Top Picture Dialog Box**

Click on the picture you want as the top picture, then click on **OK**. If a top picture already exists, its name is highlighted.

## Delete Picture

Delete Picture allows you to delete a picture name from the map you are currently viewing. This is different than Erase Picture. Erase Picture simply deletes all the symbols in the currently displayed picture, but leaves the picture name in the map. When you click on **Delete Picture**, the dialog box listing all the pictures for the current map is displayed.



**Figure 4-11. Delete Picture Dialog Box**

Click on the picture you want to delete, then click on **OK**.

Use the Save Map menu item to permanently delete the picture from the current map.

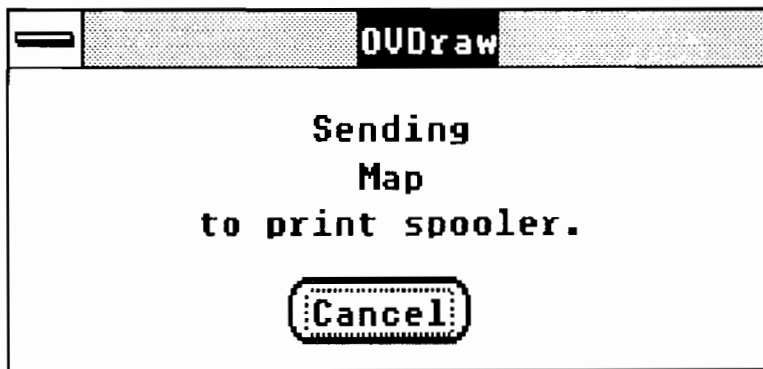


## Print Picture

Print Picture allows you to print the currently displayed picture on the workstation printer. The workstation printer must be capable of printing graphics to print HP OpenView Windows pictures.

HP OpenView Windows takes advantage of the Microsoft Windows print spooler program for printing. So, before a picture is printed it is queued on the Microsoft Windows spooler. The Microsoft Windows spooler icon automatically displays when you click on **Print Picture**.

The following dialog box is displayed.



**Figure 4-12. Print Picture Dialog Box**









- To cancel sending the picture to the spooler click on **Cancel**. If you want to cancel printing the picture after it has been sent to the spooler, use the Microsoft Windows spooler program by double clicking on the spooler icon.
- Once the dialog box disappears, the picture is printed as soon as the printer is available. You can continue using OVDdraw.

# Edit Menu

The Edit menu contains the menu items listed in Table 4-1.

Table 4-1 lists the edit modes and their corresponding cursor and hot spot. A hot spot is the part of the cursor that must be within a symbol to select it.

**Table 4-1. Edit Modes, Cursors, and Hot Spots**

Edit Mode	Cursor	Hot Spot
Move		Center
Add		Center
Connect		Center
Cut		Center
Copy		Center (lens)
Paste		Center
Describe		Pencil Point
Select		Arrow Point

## Move

Move allows you to move a symbol (subpicture, computer or component), text, or a line to another point within the work area.

Moving a Symbol or Text:

1. Click on **Move** from the Edit menu.
2. Place the cursor at the symbol you want to move and press the mouse button. The symbol becomes gray.

If the symbol has connection lines, added by using the connect mode, the connection lines will move with the symbol.

3. Drag the mouse, holding the button down, so that the symbol is at the point where you want to place it, then release the mouse button.

NOTE: You cannot use Move while in the Zoom mode.

#### Moving a Line:

For lines, Move allows you to stretch, shrink, change a line from straight to bent, or attach the line to another point.

1. Click on **Move** from the Edit menu.
2. Point to the end of the line to stretch, shrink, or reattach, then press the mouse button. To bend a line, point to the midpoint of the line you want to bend and press the mouse button.
3. Keep the mouse button pressed as you drag the line. When you reach the point where you want the end or midpoint of the line to be, release the mouse button.

## Add

Add allows you to add new symbols (subpictures, computers and components), text, and lines to your picture.

The Template window is displayed when you enter OVDraw and contains a Template menu. From the Template menu you can select one of the following menu items: Subpictures, Computers, Components, Text Styles or Line Types. The Template window title bar displays the item you have selected.

If no symbols appear, or all symbols appear with question marks inside the symbol, OVDraw is not installed correctly. Please check installation, and re-install if necessary.

If only one or two symbols appear with question marks, they are probably application added symbols. Please check installation of applications that use these symbols.

### Adding a Symbol:

1. Click on the appropriate symbol from the Template menu (subpicture, computer or component). A list of available computers or components is displayed in the Template window.
2. Click on the symbol in the Template window that you want to add. When you select a symbol from the Template window, the symbol is highlighted.
3. Place the cursor at the point in the work area where you want to add the symbol, and click at that point to insert the symbol. You can then:
  - Continue adding the selected symbol by clicking in other places within your work area.
  - Select another symbol to add from the Template window.
  - Select another menu item from the Template menu.
4. To quit adding, click on either another mode from the Edit menu or the currently-selected symbol in the Template window.

### Adding Text:

1. Click on **Text Styles** from the Template menu. The Template window displays different styles of text.
2. Click on the style of text you want from the Template window. When you select a style of text from the Template window, the text style is highlighted.
3. Place the cursor at the point in the work area where you want to add the text, and click on that point to begin adding the text.
4. Type the text. You can use the backspace key to delete as you type the text.

NOTE: You can Add Text only in the Zoom normal mode.

## Adding a Line:

1. Click on **Line Types** from the Template menu. The Template window displays different types of lines.
2. Click on the type of line you want from the Template window. When you select a type of line from the Template window, the line type is highlighted.
3. Place the cursor at the point in the work area where you want to start the line, then click on that point and press the mouse button.
4. Press and hold the mouse button as you drag the cursor to where you want the line to end. As you drag the cursor, the line you are drawing is displayed. When you have completed the line, release the mouse button.

## Connect

Connect mode works the same as adding a line, except that there must be an object underneath the cursor when the mouse is pressed down and an object underneath the cursor when the mouse is released. Select the line size through the template window. If no line is selected, the default line of a thin solid line (Line 8) is used. If a symbol is at the end point of a connecting line, the connecting line is drawn to the center of the symbol. If a line is at an endpoint, the connecting line is drawn to the position of the mouse. A connecting line may be bent around objects, using edit mode Move, if it falls across other objects.

If you move a symbol that has connection lines to it, the connection lines move with it. However, moving a line breaks all connections to it.

An object can not be connected to itself or to text. You can have multiple connections between the same two objects, and the connection lines will overlap unless you space them slightly apart. Connection lines act the same as other normal lines and may have names and labels. When an object is deleted, all connecting lines to that object are deleted.

## Cut

Cut takes advantage of the Microsoft Windows system clipboard. The clipboard allows you to temporarily store a symbol, including lines and text, and its Describe information, until you want to place it somewhere else in either the current picture or another picture. (Describe is explained later in this chapter).

The symbol you cut, along with any attached Describe information, is stored in the clipboard until you cut or copy another symbol. When Cut is used in conjunction with Paste, you can place the symbol stored in the clipboard at another point within your picture. You can also select another picture and paste the cut symbol into the newly-selected picture or any HP OpenView application.

To cut a symbol, click on **Cut** from the Edit menu, then click on the symbol you want to cut. The symbol disappears from the work area and is placed in the clipboard until you cut or copy another symbol.

## Copy

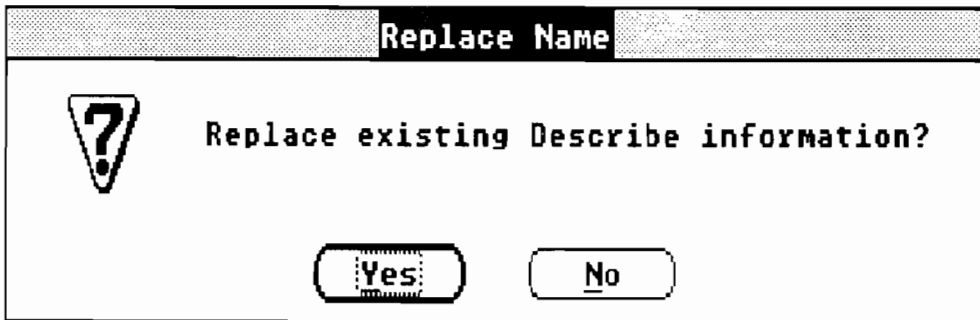
Just like Cut, Copy takes advantage of the Microsoft Windows system clipboard. Copying a symbol places it in the clipboard **and** keeps it in its current position in the picture.

To Copy a symbol, click on **Copy** from the Edit menu, then click on the symbol you want to copy. The symbol remains in its current position in the work area and a copy is placed in the clipboard until you cut or copy another symbol. You can then use Paste to place the symbol where you want it in the picture.

## Paste

Paste allows you to paste the currently-stored clipboard symbol and its attached Describe information to a point within the work area. Symbols are stored in the clipboard by using either the Cut or Copy commands explained above.

If the symbol you are pasting already exists in the current map, the following dialog box is displayed.



**Figure 4-13. Replace Name Dialog Box**

- |            |   |
|------------|---|
| <b>Yes</b> | Click on <b>Yes</b> to have the Describe information from the symbol you are pasting overwrite the existing Describe information. |
| <b>No</b>  | Click on <b>No</b> if you want the existing Describe information to be attached to the symbol you are pasting.                    |

To Paste a symbol, click on **Paste** from the Edit menu, then click on the point where you want to paste the symbol. You can continue pasting the symbol to other places within your work area by clicking on new places.

## **Describe**

Describe allows you to attach a name, label, and other textual information (notepad or application-specific) to a symbol. You can describesubpictures, computers, computers, components, or lines; you can not describe text.

- |              |   |
|--------------|---|
| <b>Name:</b> | A name used to index the textual information you enter about the computer or component. HP OpenView Windows allows up to 64 characters for the name, although some applications may limit that number. Click on ? to select from a list of available names. |
|--------------|---|

Label:	An abbreviated name of up to eight characters that is displayed on the subpicture, computer or component symbol in your picture. For example, your computer might have the Name Alpha.Bldg1.HP, and the Label is Alpha.
Notepad:	Text you enter about the symbol, such as line speed, room location, or last Preventive Maintenance (PM) performed. Some applications do not have a notepad section.
Application-Specific Information:	Some applications have areas for additional information about the symbol. Check your application manual for how to complete this information.

To Describe a symbol, click on **Describe** from the Edit menu. Click on the symbol you want to describe. A dialog box is displayed. You can enter the information in one of two ways:

- **Type the name**, then use the TAB key to get to the different text boxes to enter any other information you want to enter for this symbol. Click on **OK** when you have finished entering all the information, or click on **Cancel** if you do not want to save the information you just entered for this symbol.
- **Modify previously-entered notepad or application-specific information about a symbol.** Click on ?. Next, click on the node or device name of the information you want to modify, then click on **OK**. The textual information for that node or device is displayed in the Describe dialog box. You can modify the information before clicking on **OK** to save.

Either way, the information you enter is applied to all the symbols of the same name and type in other pictures. If you change the textual information for a symbol in one picture, the new information overwrites the previous information for all symbols of the same type with the same name in other pictures.



## Select

Most of the menu items in OVDraw are HP OpenView Windows menu items that apply to any of the symbols. Some applications add menu items to the OVDraw program that allow you to do more to your map based on the specific type of symbol you select. For example, an application may allow you to add additional information to a particular type of computer.

If your application has such a menu item, you can not click on the menu item only. Select the symbol by clicking on the symbol, then click on the application-specific menu item.

See your application manual to determine if you have OVDraw application-specific menu items.

## Options Menu

The Options menu contains the following menu items:

- Grid
- Zoom
- Check Consistency

## Grid

The grid is a series of horizontal and vertical lines that appear much like graph paper in your work area. The grid helps you line up symbols in your picture.

## Zoom

The zoom dialog box contains a window representing the entire map. Lines and text are not shown in this window. Each object is represented by a dot with the status color of the object. There is also a rectangle representing the current size and position of the main window in relation to the map. Use the left mouse button to click on the rectangle and drag it to change the view of the map. Changing the size of the zoom changes the size of the rectangle. Click on **OK** to change the view, the selected zoom mode, or the display area inside of the rectangle.

Zoom mode has the following values:

- 2X displays the map twice the normal size.
- 1X (normal) is the default display size.
- 1/2X displays the map 1/2 the normal size.
- 1/4X displays the map 1/4 the normal size.
- 1/8X displays the map 1/8 the normal size.

Zoom must be set to (normal) to print a map, and a setting stays in effect until you change it or you quit.

## **Check Consistency**

Check Consistency performs an internal test of your map to determine if there are any subpicture symbols with invalid picture names.

The Check Consistency dialog box also displays the Top Picture if one exists. The Top Picture is displayed under the list box in the Check Consistency dialog box.

The following dialog box listing the results of the consistency check is displayed.

## Help Menu

The Help menu items are index names for each OVDraw application Help file. By selecting an index entry, you can view the help for that application.

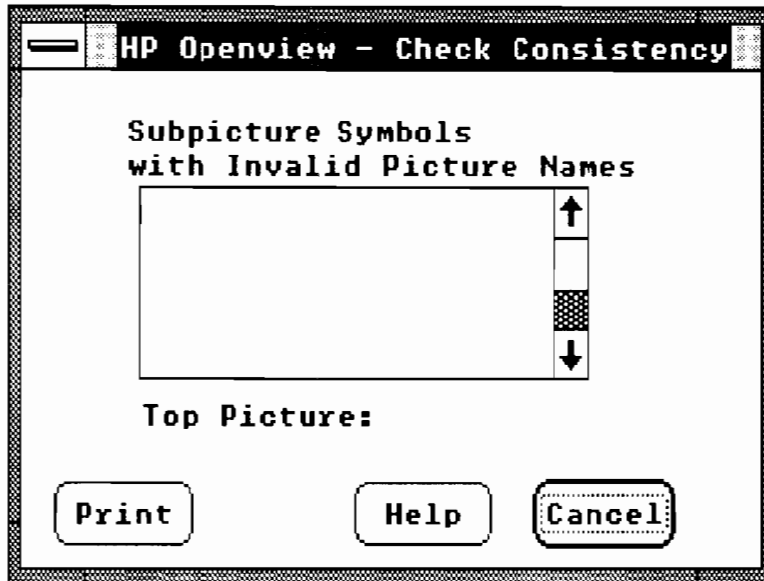


Figure 4-14. Check Consistency Dialog Box

# OVDraw Tutorial

---

This chapter presents a step-by-step tutorial for creating a map with OVDraw. If you want reference information about OVDraw, including a description of the OVDraw window, refer to the *OVDraw* chapter.

To work through this tutorial, you must understand the difference between a map and a picture. A map contains several pictures. Each picture represents one portion of your network. For example, one picture contains all the computers on one floor of your building, and the map contains all the pictures for all the floors in your building.

The top picture should contain a subpicture symbol for each picture in your map so that you can easily view the various subpictures that are part of your network. Also, you can view the most critical status for all nodes or devices, within a picture, from a top picture containing subpicture symbols representing each picture in your map.

The steps for creating a map are listed below, and explained in detail in the following sections.

1. Run OVDraw.
2. Add symbols (subpictures, computers, components, lines, and text).
3. Describe the symbols.
4. Name your picture.
5. Continue creating the rest of the map pictures.
6. Save your map.

In this lesson you will create three simple pictures each containing several symbols, lines, and optional text.

The three pictures you create are the following:

- **LAN** containing three computer symbols (Alpha, Beta, and Gamma) and one subpicture symbol (Router)
- **Router** containing two computer symbols (Delta and Epsilon) and one subpicture symbol (LAN)
- **TopPict** containing two subpicture symbols (Router and LAN)

---

## Run OVDraw

To get to OVDraw, do one of the following:

- From PAM select the **OVDraw** selection.
- From MS-DOS (for example, C:\WINDOWS or D:\WINDOWS) type: **win OVDraw**.
- From Microsoft Windows double click on **OVDraw.EXE**. Depending on how your system is configured, you may have to first click on the appropriate directory where you have the HP OpenView Windows programs stored.


---

## Add Symbols

You may need to use the following tools to help you create your pictures:

- **Grid** in the Options menu. Click on **Grid** to cover the workarea with a grid. A grid helps you to place and align the symbols and lines in your picture.
- **Cut** in the Edit menu. Click on cut to turn the cursor into a pair of scissors. Place the scissors on what you want to cut, or remove, and click.
- **Erase Picture** in the picture menu.

To erase everything from the workarea, open the Picture menu and click on **Erase Picture**. A dialog box asks if you want to erase the current picture, click on **OK**. If you are using the grid, it will remain.

1. Click on **Template** to display the five symbol types.
2. Click on **Computers**. For this lesson, click on the large computer. The cursor changes to add mode (  ). Move the cursor to the spot in the work area where you want the computer symbol placed, then click the mouse button at that point. (See Figure 5-1.)
3. Click on two more places within the work area to place two more large computers lined up horizontally with the first symbol.
4. Click on subpictures from the Templates Menu.
5. Click on the subpicture symbol and place it in the work area near one of the large computers.

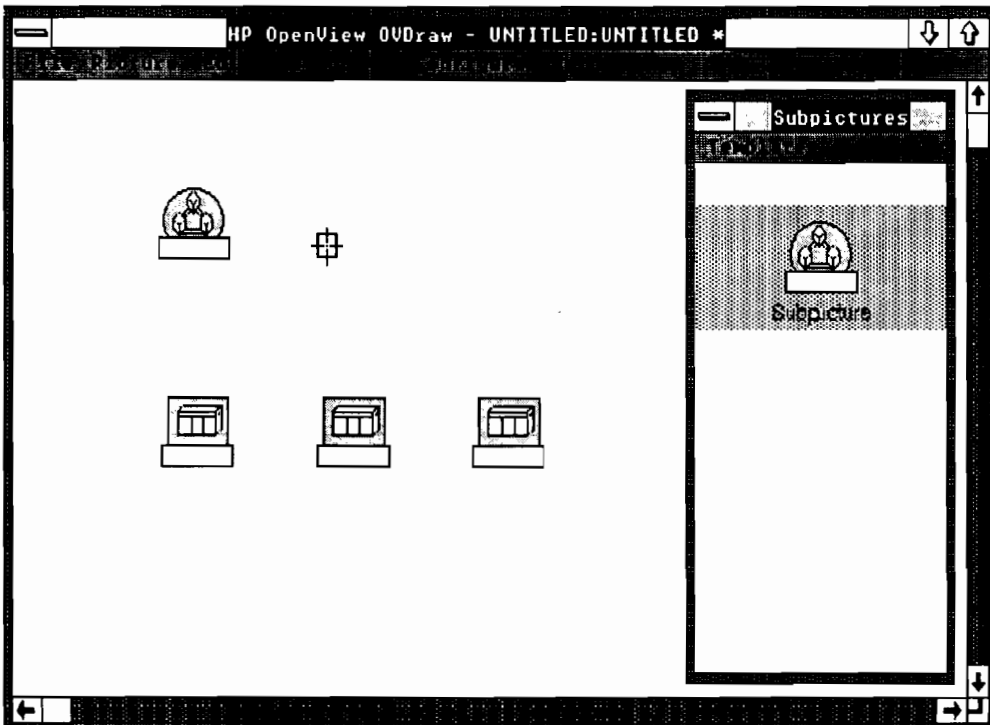


Figure 5-1. Addition of One Subnet Symbol



6. Click on **Line Types** from the Templates menu.
7. Click on Line Type 1 to represent the LAN. Represent the LAN as a straight line along the bottom of the work area. To do this place the cursor about 1/4 inch from the lower left, then drag the mouse in a straight line to the right. The line you are drawing is displayed. Continue dragging the mouse until the cursor is about a 1/4 inch from the lower right portion of the work area. Release the mouse button. (See Figure 5-2).

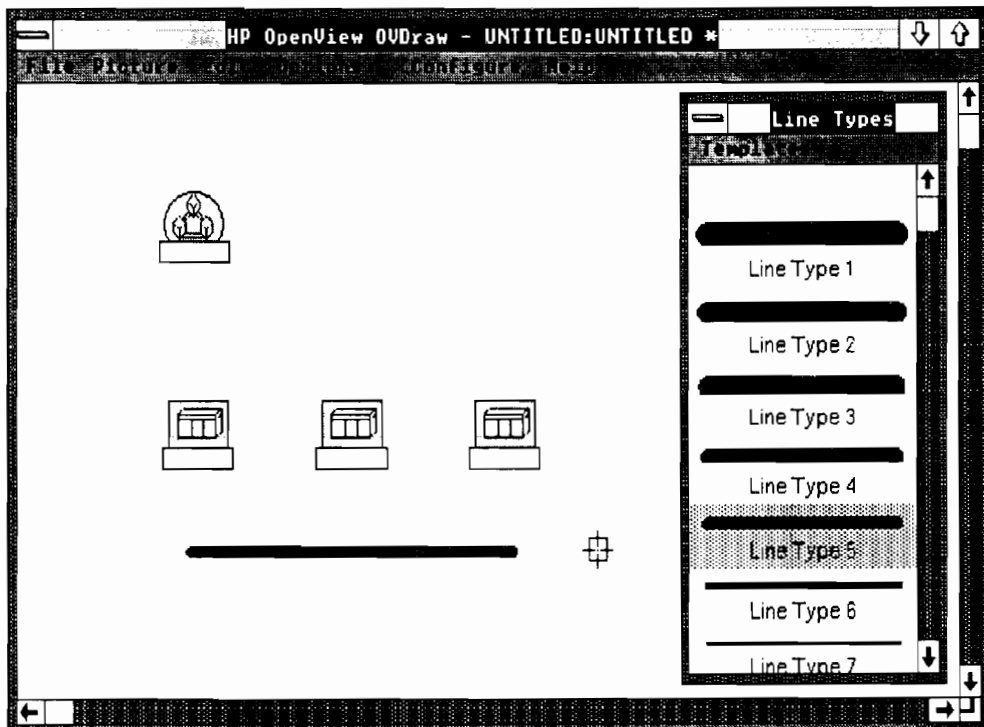


Figure 5-2. Addition of LAN

8. Click Line Type 6 from the Template window to represent the connections from the computers to the LAN. Using the same click, drag and release method that you did for the LAN, connect the computer symbols to the LAN.
9. Using the same line type, connect one of the computer symbols to the subpicture symbol as shown in Figure 5-3.

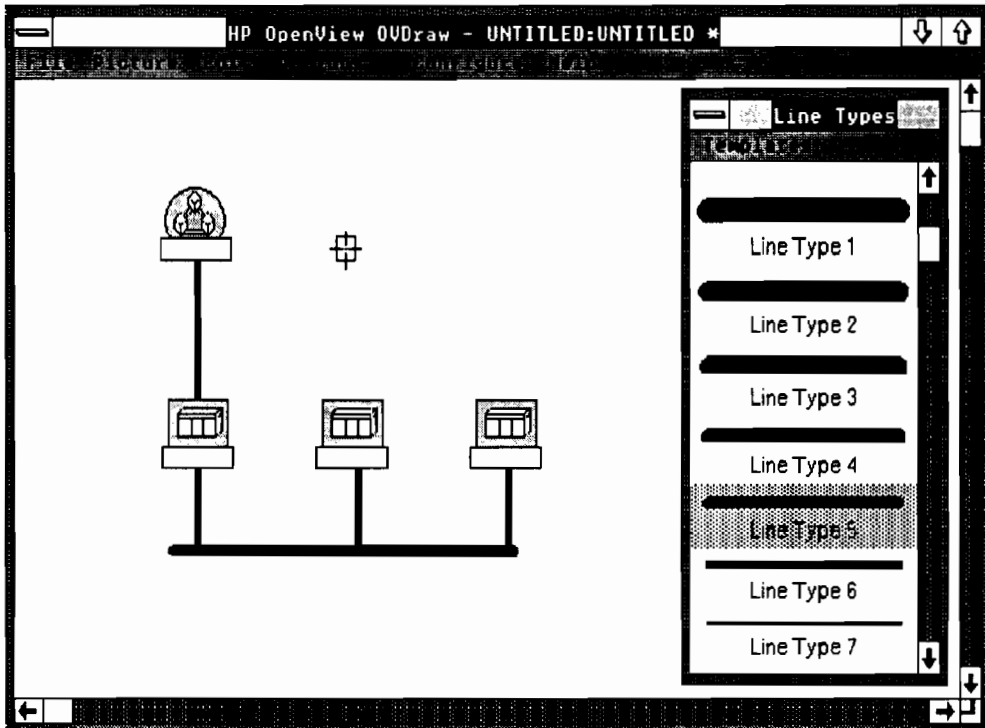



Figure 5-3. Computer Symbols Connected to LAN

---

## Describe the Symbols

Next, you need to attach a name, label, and optional notepad information to the symbols and lines. The name is used to index the textual information you give the computer or component. The label is an abbreviated form of the Name that is displayed on the computer or component symbol in your picture. The Name that is displayed on the computer or component symbol in your picture.

1. Click on the Edit menu and select Describe. The cursor changes to a pencil in the describe mode (  ).
2. Click on the computer symbol attached to the subpicture symbol. The Describe dialog box is displayed with the cursor already at the Name text box.

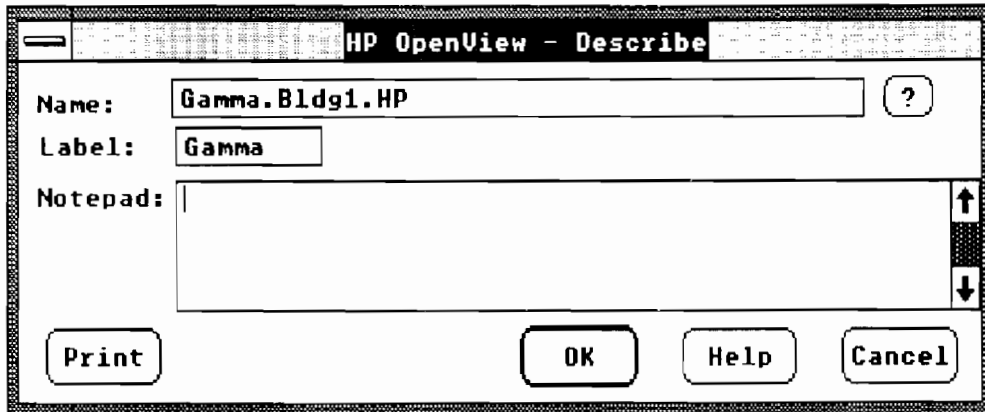


Figure 5-4. Describe Dialog Box

3. Enter text for the Name and Label text boxes. Type **Gamma.Bldg1.HP**, then press **TAB** twice. The cursor should now be in the Label text box. Type **Gamma**, then click on **OK** or press **ENTER** to save the entries you made. The dialog box disappears and the symbol contains the label Gamma.

---

**Note** Depending on the application you are using, the Describe dialog box may vary.

---

4. Using the same Describe method, describe the other two computers as follows:

<b>Name</b>	<b>Label</b>
Alpha.Bldg1.HP	Alpha
Beta.Bldg1.HP	Beta

5. Using the same Describe method, describe Line Type 1 as LAN. Type **LineTypeLAN** and press **TAB** twice. The cursor should be in the Label text box. Type LAN, then click on **OK**. A small box containing the label LAN appears in the center of the LAN line. Continue to label the other lines as you wish.

---

**Note** OVDdraw always places the line label in the center of a line. If other lines cross or connect at the center, move those lines off center so that the line label will fit.

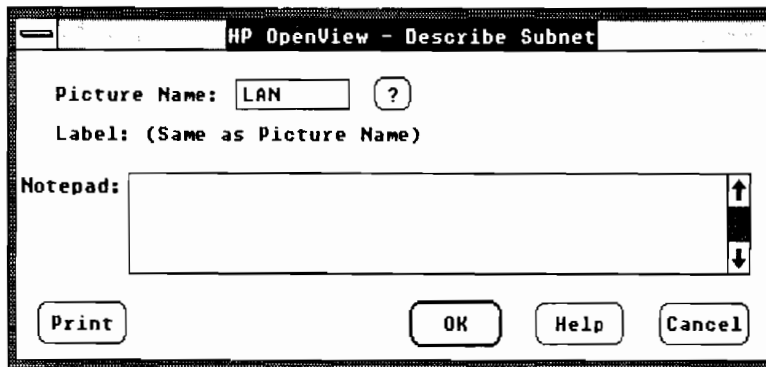
---

6. Click on the subpicture symbol and name it Router. The Describe dialog box for the subpicture symbol is not the same as for the large computers.

---

## Name Your Picture

Click on Name Picture from the Picture menu. The Name Picture dialog box is displayed. Type **LAN** in the Name text box, then click on **OK**. The title at the top is updated to LAN.



**Figure 5-5. Describe Subnet Dialog Box**

---

**Note** If you want to identify this picture by more than the title, you could use Text Styles from the Templates menu to type the picture name, LAN, at the top of the work area.

---

By naming a picture, you temporarily store the picture on disk. To save the picture permanently as part of a map, use the Save Map menu item.

---

## Continue Creating the Rest of the Map Pictures

1. Click on **New Picture** from the **Picture** menu to begin creating the second picture. The picture name in the title bar is changed to *Untitled* to indicate that you are starting a new picture.
2. Click on **Small Computer** from the **Templates** menu. Place two small computer symbols and one subpicture symbol in the work area.
3. Click on **Line Types** from the **Templates** menu. Click on **Line Type 8** to connect one small computer symbol to the subpicture and to other small computer symbol.
4. Click on **Describe** from the **Edit** menu. Describe the subpicture symbol as LAN. Describe the computer symbol connected to the subpicture symbol as Epsilon.Bldg1.HP.

Describe the other computer symbol as Delta.Bldg1.HP (name) and Delta (label).

5. Click on **Name Picture** from the **Picture** menu. Name the picture Router.
6. Click on **New Picture** from the **Picture** menu.
7. Click on **Computers** from the **Templates** menu. Place two subpicture symbols in the work area to represent the two pictures you just created.
8. Click on **Describe** from the **Edit** menu to describe the picture symbols LAN and ROUTER. Click on **NO** in the **Replace Name** dialog box.
9. Click on **Name Picture** from the **Picture** menu. Name the picture TopPict.
10. Click on **Set Top Picture** from the **Picture** menu to identify this picture as the top picture. The top picture will always be displayed first when you select this map, and contains all the picture symbols you create for the map.
11. Click on **TopPict**, then click on **OK**.



---

## Save Your Map

Click on **Save Map As** from the **File** menu to save the pictures you just created and named as one map. The **Save Map As** dialog box is displayed with the cursor at the **Name** text box. Type **MyFirst** as the name, then press **ENTER** or click on **OK**.

You now have a map named **MYFIRST** with 3 pictures: **TOPPICT**, **LAN** and **ROUTER**.

To exit this tutorial, click on the **Microsoft Windows Control Menu** and select **Close**. Click on **OK** to end your **HP OpenView** session.

# OVAdmin

---

OVAdmin allows you to set default configurations for HP OpenView Windows and HP OpenView applications.

To run OVAdmin, do one of the following:

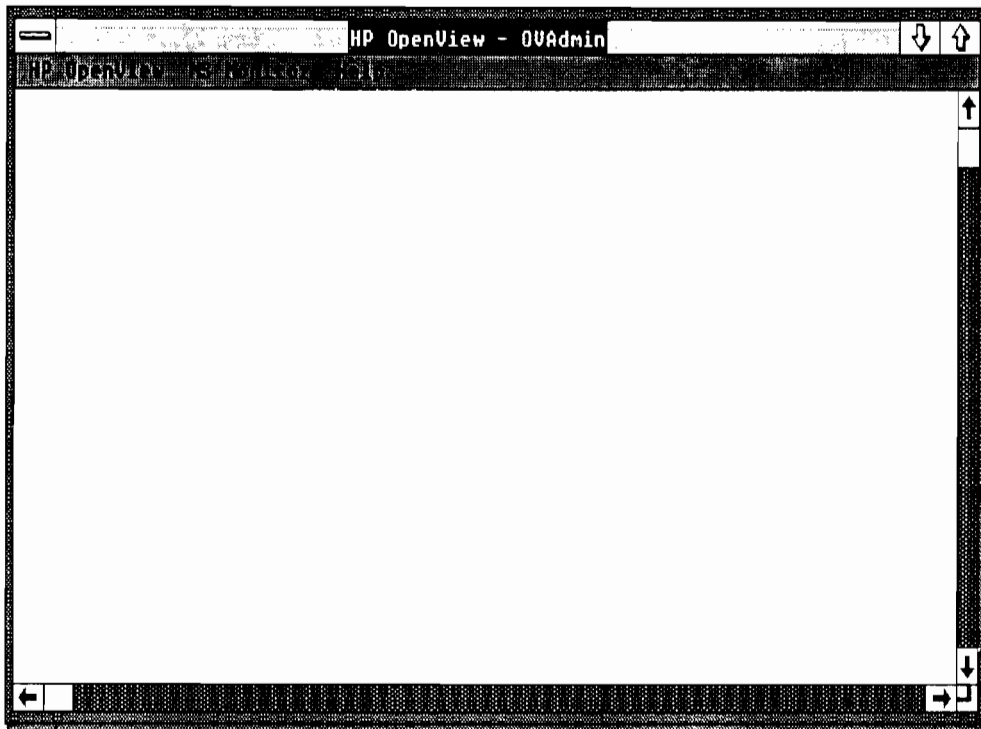
- From PAM select the **OVAdmin** selection.
- From MS-DOS (for example, C:\WINDOWS or D:\WINDOWS) type: **win OVAdmin**
- From Microsoft Windows MS-DOS Executive program double click on **OVAdmin.EXE**. Depending on how your system is configured, you may have to first click on the appropriate directory where you have the HP OpenView Windows programs stored.

---

**Warning**    **Although Microsoft Windows allows you to run several programs at one time, you cannot have two OVAdmin sessions running at the same time.**

---





**Figure 6-1. OVAAdmin Window**

The menu bar contains:

- HP OpenView Windows
- Application-Specific menu items (if applicable)
- Help

---

# HP OpenView Windows Menu

The HP OpenView Windows menu contains these items:

- Set Default Map
- Set Message Queue Size
- Set Status Propagation
- Set Maximum Number of Symbols
- Set Alarm Notification Time Interval
- Exit
- About

Each menu item is described in the following sections.

## Set Default Map

Set Default Map allows you to specify which map you want displayed when you open OVRun. If you do not specify a default map, none is displayed when you open OVRun. Once OVRun is running you can use Change Map to display a map or change to a different map.

---

**Note** When you specify a map name with Set Default Map, the current Microsoft Windows WIN.INI file changes. If you load a new version of Microsoft Windows, you need to set the default map again to overwrite the default WIN.INI file.

---

The following Set Default Map dialog box is displayed when you click on **Set Default Map**.

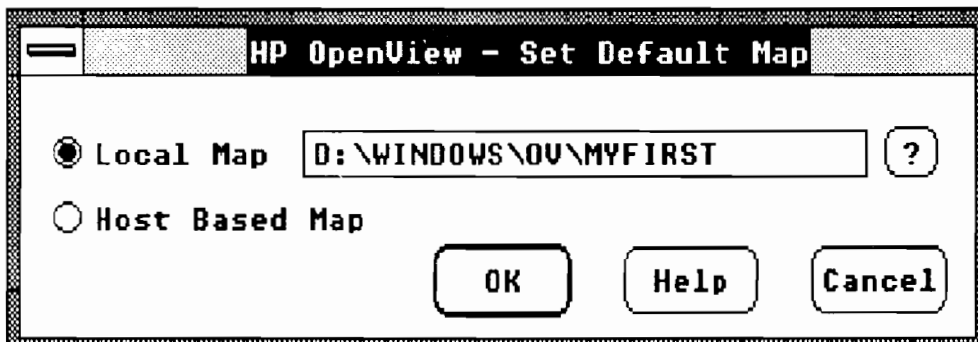


Figure 6-2. Set Default Map Dialog Box

To set the default map, select either Local or Host Map by clicking on the appropriate option button.

Local Map:

Select local map if you want to use a map stored on either the local Vectra or an Office Share Server. Then do one of the following:

- **Type the map name.** For example, assuming you saved a map called MYFIRST, type MYFIRST, then click on **OK**.
- **Click on ?** to view the Set Default Map Filelist dialog box. The Set Default Map Filelist dialog box allows you to choose the correct directory or subdirectory under which the map is stored. Click on the appropriate directory/subdirectory and file name you want as the default map, then click on **OK**.

Host Based Map:

Select Host Based Map if you are using a map stored on the HP 3000 in conjunction with an NS Monitor application. HP OpenView Windows retrieves the map from the HP 3000.

## Set Message Queue Size

Set Message Queue Size allows you to determine the message queue size for all applications in subsequent HP OpenView Windows sessions. If you do not specify a queue size, the default size is 8. The range allowed is 8 to 120. It is recommended that the user sets the queue size according to the application directions.

---

**Note** When you specify a queue size with Set Message Queue Size, the current Microsoft Windows WIN.INI file changes. If you load a new version of Microsoft Windows, you need to set the message queue size again to overwrite the default WIN.INI file.

---

## Set Status Propagation

Set Status Propagation allows you to determine the level of status propagation for subsequent OVRun sessions. The status color change of an object usually propagates up only one level to the object's immediate containing subpicture. You can change the **Status Propagation** to rise up through all levels of containing subpictures by using this menu.

---

**Note** When you specify a propagation level with Set Status Propagation, the current Microsoft Windows WIN.INI file changes. If you load a new version of Microsoft Windows, you need to set the status propagation again to overwrite the default WIN.INI file.

---

## Set Maximum Number of Symbols

Set Maximum Number of Symbols allows you to determine the maximum number of symbols used in subsequent OVDDraw sessions. If no maximum is specified, the default maximum number of symbols is 512. The range is 8 to 1700. If the number chosen is not a multiple of 8, OVDDraw rounds it up to the next multiple of 8 before processing it. More symbols allowed means more memory must be reserved.

---

**Note** When you specify a maximum with Set Maximum Number of Symbols, the current Microsoft Windows WIN.INI file changes. If you load a new version of Microsoft Windows, you need to set the maximum number of symbols again to overwrite the default WIN.INI file.

---

## Set Alarm Notification Time Interval

Set Alarm Notification Time Interval allows you to specify how often alarm notification of an object, continuing to show the same status, is reported in the Alarm Notification Dialog Box.

When you select Set Alarm Notification Time Interval, a dialog box displays for configuring the time interval. If you do not specify a time interval, the default time interval is 60 seconds. The range must be between 30 - 3600 seconds.

---

**Note** When you specify a time interval with Set Alarm Notification Time Interval, the current Microsoft Windows WIN.INI file changes. If you load a new version of Microsoft Windows, you need to set the Alarm Notification Time Interval again to overwrite the default WIN.INI file.

---

## Exit

Click on **Exit** to end a session of HP OpenView Windows. A dialog box appears with **OK** and **Cancel** buttons. Click on **OK** to end your HP OpenView Session, or click on **Cancel** to continue the session.

## About

About provides the version number, release date, and copyright information for your HP OpenView Windows software.



## Application-Specific Menus

Check your application manual for information about the application-specific OVAdmin menus.

## Help Menu

The Help menu items are index names for each OVAdmin application Help file. By selecting an index entry you can view the help for that application.

1  
2  
3  
4  
5  
6  
7  
8  
9  
10  
11  
12  
13  
14  
15  
16  
17  
18  
19  
20  
21  
22  
23  
24  
25  
26  
27  
28  
29  
30  
31  
32  
33  
34  
35  
36  
37  
38  
39  
40  
41  
42  
43  
44  
45  
46  
47  
48  
49  
50  
51  
52  
53  
54  
55  
56  
57  
58  
59  
60  
61  
62  
63  
64  
65  
66  
67  
68  
69  
70  
71  
72  
73  
74  
75  
76  
77  
78  
79  
80  
81  
82  
83  
84  
85  
86  
87  
88  
89  
90  
91  
92  
93  
94  
95  
96  
97  
98  
99  
100

# OVRun

---

OVRun allows you to run HP OpenView applications using the HP OpenView Windows interface and map.

To run OVRun, do one of the following:

- From PAM select the **OVRun** selection.
- From MS-DOS (for example, C:\WINDOWS or D:\WINDOWS) type: **win OVRun**
- From Microsoft Windows MS-DOS Executive program double click on **OVRun.EXE**. Depending on how your system is configured, you may have to first click on the appropriate directory where you have the HP OpenView Windows programs stored.

---

**Warning**    **Although Microsoft Windows allows you to run several programs at one time, you cannot have two OVRun sessions running at the same time.**

---



This chapter consists of the following major topics:

- Map Status
- Alarms
- OVRun Window
- OVRun Menus

---

## Map Status

This section describes how network status is reflected on a map. This section does not describe how to create a map to represent your network. Refer to the “OVDraw” or “OVDraw Tutorial” chapters for information on drawing a map.

## Symbol States

Five states exist to represent the status of a node or device (computer or component symbol). Table 7-1 lists the five states and the default colors used to represent each state.

**Table 7-1. Symbol States**

<b>State</b>	<b>Color</b>	<b>Description</b>
OK	Green	The node or device is available for service.
Warning	Yellow	A non-critical condition has been reported, or the node or device is in a degraded state.
Critical	Red	The node or device is unavailable for service due to a failure.
Unknown	Blue	Either the node or device's application doesn't report its status, or, the map was changed and the status hasn't been reported yet to HP OpenView Windows.
Informational	Magenta	The node or device is down due to an expected condition, such as maintenance or a planned shutdown.

To see what your current colors are, use the Map Legend menu item in the OVRun Map menu.

## Symbol Status

If your map's top picture contains a subpicture symbol for each picture in the map, you can check your network's overall status from the top picture. If a node or device in a picture is in a critical or warning state, that status is reflected in the corresponding subpicture symbol in the top picture.

If a picture represents several nodes or devices each with a different status, the most critical status is the one displayed in the top picture. For example, if a picture represents three nodes, two have a critical status and the third has reached warning status, the top picture displays the color for critical status.

When a subpicture symbol is in either a critical or warning state, you can double click on that subpicture symbol to view the associated picture. The color of the symbol representing the node or device reflects the critical or warning state. To find the problem with the node or device select that node or device's symbol to run a test.

---

## Alarms

As HP OpenView Windows receives a change in the status of a node or device, it displays that subpicture symbol in the appropriate color. When the status of a node or device changes to a warning or critical state, HP OpenView Windows beeps and the color of the alarm icon indicates the status of the alarm. This occurs even if HP OpenView Windows is not currently the active window or it is displayed as an icon. This type of status change is an **alarm**. To view a list of outstanding alarms, click on **Show Alarms** from the Monitor menu. To view a list of current alarms, double click on the **alarm icon**.

---

**Note**      Not all applications monitor status. Check your application manual to find out if status is indicated.

---

---

## Alarm Notification

Alarm Notification records the history of the alarm status, of a given node, as either critical or warning. The history of alarm notifications remains in the window until that window closes. When you click on **OK**, all alarm notifications disappear.

When you receive an alarm, the color of the alarm icon reflects the status of the incoming alarm. Double click on the alarm icon to bring up the Alarm Notification Dialog Box.

# OVRun Window

Below is an example of the OVRun window.

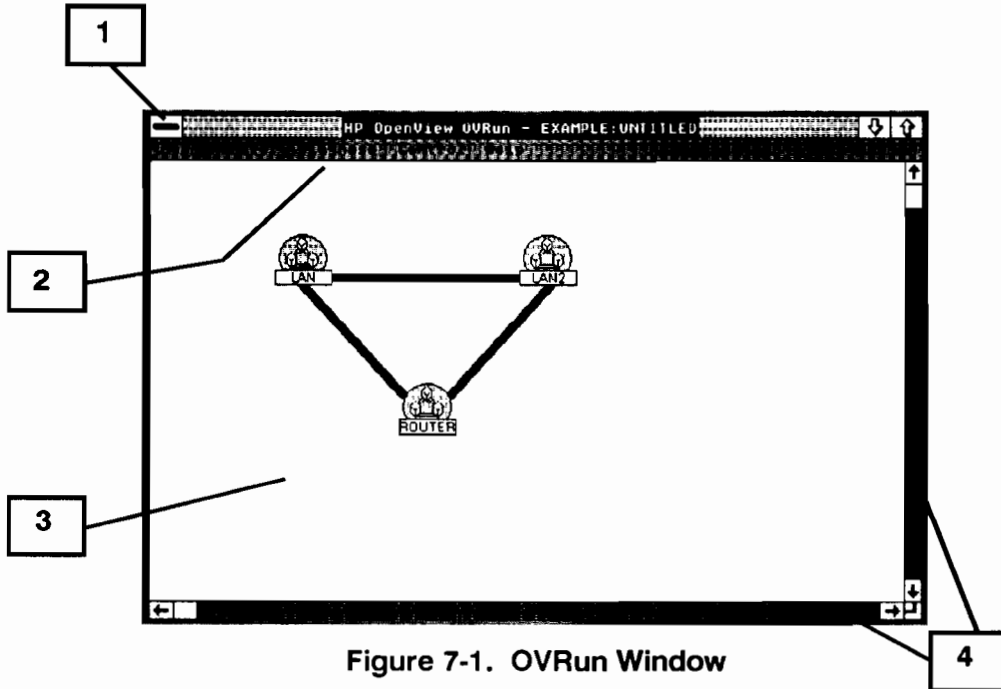


Figure 7-1. OVRun Window

The OVRun window contains the following:

- (1) Microsoft Windows Control Box: Contains the Microsoft Windows control menu items.
- (2) Menu Bar: Displays the menus available through OVRun. The menus vary depending on the applications you have installed.
- (3) Map Area: The portion of the window where your map is displayed and where you find color changes indicating status. This is also the area where you can select symbols on which to perform a function, such as a test.
- (4) Scroll Bars: Allows you to scroll up or down, left or right within the map area.

---

## OVRun Menus

This section describes the types of OVRun menus, how to select symbols, and each of the OVRun menu items.

### OVRun Menu Types

Three types of menu items exist:

- **HP OpenView Windows:** These menu items are part of the HP OpenView Windows program and are always available.
- **Application-Dependent:** These menu items are part of HP OpenView Windows, but require an application to implement them. You must click on the appropriate symbol for these menu items to be available to you.
- **Application-Added:** These menu items are supplied by specific applications. Check your application manual to find out which additional menu items your application supplies. Application-added menu items may or may not require you to click on a symbol to use them.

In this manual, application-dependent and application-added menu items may be referred to jointly as application-specific since they both require an application to use them.

When a menu item is available, its name displays in black. When a menu item is unavailable, its name displays in gray.

## Selecting Symbols

Before you select a menu item you select a symbol. Based on the symbol you select, the application-added, and sometimes application dependent menu items, become available.

To select a symbol simply click on the symbol. If you no longer want that symbol selected, either click on the symbol again, or click on another symbol.

Some menu items, such as an echo test, require selecting two symbols.

To select two symbols, click on the first one, then press the **SHIFT** key while clicking on the second symbol. To deselect the two symbols either select another symbol, or click one of the selected symbols.





## Map Menu

The Map menu contains the following HP OpenView Windows menu items.

- Go To Top
- Go To Previous
- Go To Picture
- Go To
- Print Picture
- Print Object List
- Map Legend
- Change Map
- Zoom
- Exit
- About

## Go To Top

Go To Top allows you to view the top picture from any picture you are currently viewing. Normally, the top picture contains all the subpicture symbols. The top picture is specified in the OVDraw program.

## Go To Previous

Go To Previous allows you to view the previous (last) picture you were viewing. If you click again on **Go To Previous**, the original picture you were viewing displays.

## Go To Picture

Go To Picture allows you to view the picture you select. By clicking on **Go To Picture**, the following dialog box displays.

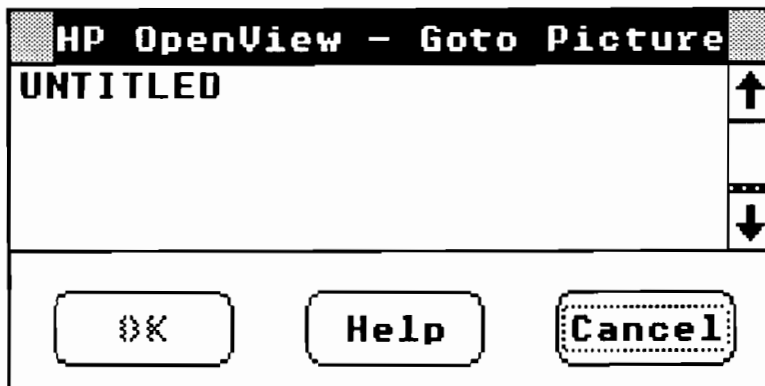


Figure 7-2. Go To Picture Dialog Box

Click on the picture you want to view, then click on OK.

## Go To

Go To allows you to find a picture that contains the symbol for the particular node or device you select. The following dialog box lists all the picture names in which this symbol appears.



Figure 7-3. Go To Dialog Box

Type the node or device name of the picture you want to view, then click on **OK** or press **ENTER**. Or, click on **?** to view a list of node or device names. Click on the node or device name, then click on **OK** to view the picture containing the corresponding symbol.

If the symbol exists in more than one picture, a list selector box displays listing all the picture names in which this symbol appears.

Click on the picture you want to view, then click on **OK**.

## Print Picture

Print Picture allows you to print the picture currently displayed on the workstation printer. The workstation printer must have graphics printing capabilities.

HP OpenView Windows takes advantage of the Microsoft Windows print spooler program for printing. So, before a picture is printed it is queued on the Microsoft Windows spooler. The Microsoft Windows spooler icon automatically displays when you click on **Print Picture**.

The following dialog box is displayed.



Figure 7-4. Print Picture Dialog Box

- To cancel sending the picture to the spooler click on **Cancel**. If you want to cancel printing the picture after it has been sent to the spooler, use the Microsoft Windows spooler program by double clicking on the spooler icon.
- Once the dialog box disappears, the picture is printed as soon as the printer is available. You can continue using OVRun.

## Print Object List

Print Object List allows you to print a list of all the symbol names used in the map. The list is printed on the workstation printer.

HP OpenView Windows takes advantage of the Microsoft Windows print spooler program for printing. So, before an object list is printed it is queued on the Microsoft Windows spooler. The Microsoft Windows spooler icon automatically displays when you click on **Print Object List**.

The following dialog box is displayed.



Figure 7-5. Print Object List Dialog Box

- To cancel sending the object list to the spooler click on **Cancel**. If you want to cancel printing the object list after it has been sent to the spooler, use the Microsoft Windows spooler program by double clicking on the spooler icon.
- Once the dialog box disappears, the object list prints as soon as the printer is available. You can continue using OVRun.

## Map Legend

Map Legend allows you to view a legend of the colors used in your pictures to show status.

## Change Map

Change Map allows you to display a different map. On the new map, all the symbols are first displayed in the status unavailable color and the alarms list is cleared. As the HP OpenView applications begin sending their status to the new map, the symbols colors change to the appropriate color.

If no symbols appear, or all symbols appear with question marks inside the symbol, OVDRAW is not installed correctly. Please check installation, and re-install if necessary.

If only one or two symbols appear with question marks, they are probably application added symbols. Please check installation of applications that use these symbols.

The following dialog box displays.

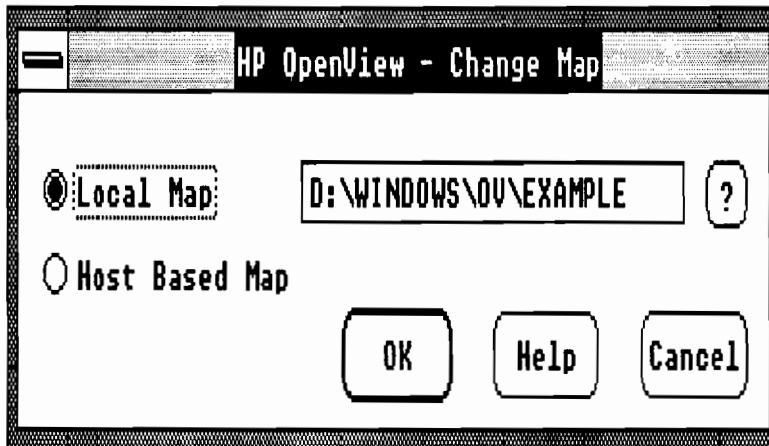


Figure 7-6. Change Map Dialog Box

To change map, select either Local or Host Based Map by clicking on the associated option button.

Local Map: Select local map if you want to use an MS-DOS map stored on either the local Vectra or an Office Share Server. Then either:

- **Type the map name.** For example, assuming you saved a map called MYFIRST, you would type **MYFIRST**, then click on **OK**.
- **Click on ?** to view the Files dialog box. The Files dialog box allows you to choose the correct directory or subdirectory under which the map is stored. Click on the appropriate directory, subdirectory (if applicable) and file name you want as the current map, then click on **OK**.

Host Based Map: Select Host Based Map if you are using a map stored on the HP 3000 in conjunction with an NS Monitor application. HP OpenView Windows retrieves the map from the HP 3000.

## Zoom

The zoom dialog box contains a window representing the entire map. Lines and text are not shown in this window. Each object is represented by a dot with the color and status of the object. There is also a rectangle representing the current size and position of the main window in relation to the map. Use the left mouse button to click on the rectangle and drag it to change the view of the map. Changing the size of the zoom changes the size of the rectangle. Click on **OK** to change the view, the selected zoom mode, and the display area inside of the rectangle.

Zoom mode has the following values:

2X displays the map twice the normal size.

1X (normal) is the default display size.

1/2X displays the map 1/2 the normal size.

1/4X displays the map 1/4 the normal size.

1/8X displays the map 1/8 the normal size.

Zoom must be set to 1 (normal) to print a map, and a setting stays in effect until you change it or you quit.

## Exit

Click on **Exit** to end a session of HP OpenView Windows. A dialog box appears with **OK** and **Cancel** buttons. Click on **OK** to end your HP OpenView Session, or click on **Cancel** to continue.

## About

About provides the version number, release date, and copyright information for your HP OpenView Windows software.



## Monitor Menu

The Monitor menu contains the following menu items:

- Describe
- Identify
- Show Alarms

## Describe

Describe allows you to view configuration information about a node or device, such as its name or notepad, and application-specific information.

Typically, this information is stored locally on the workstation.

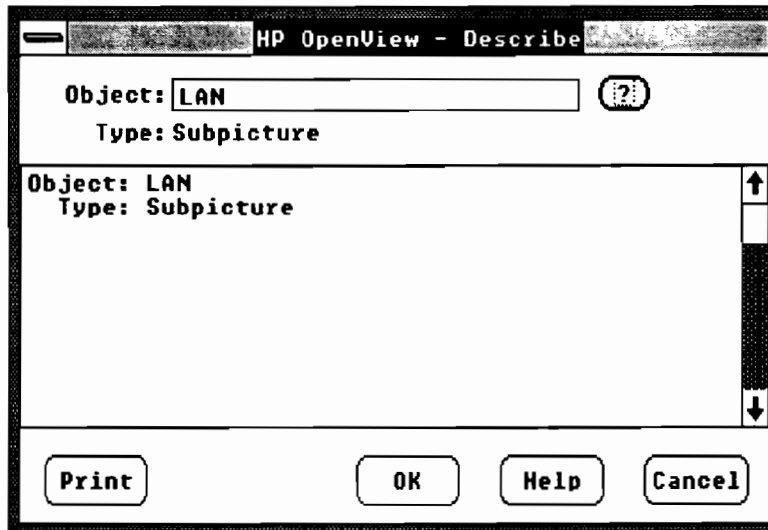


Figure 7-7. Default Describe Dialog Box

## Identify

Identify allows you to view the identification information for a node or device. Typically this information is retrieved from the node or device when you click on **Identify**.

Identify is an application-dependent menu item. Refer to your application manual for detailed information about Identify.

## Show Alarms

An alarm is a node or device in the critical or warning state. Show Alarms allows you to view a list of the outstanding alarms, their status and the date and time they became alarms. The following dialog box displays when you click on **Show Alarms**.

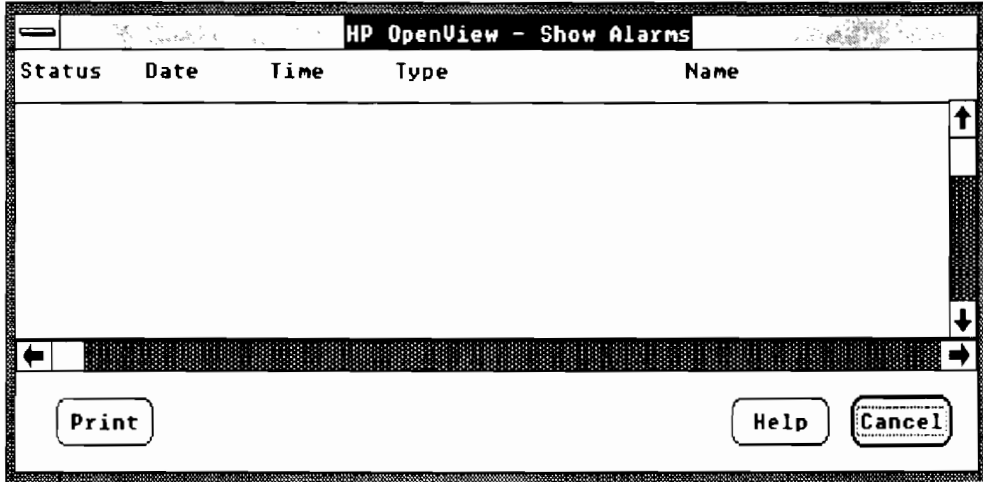


Figure 7-8. Show Alarms Dialog Box

Node and device names remain on the alarms list until their status is no longer critical or warning.

## Diagnose Menu

The diagnose menu items, Read Parameters and Self Test, enable you to do the following:

- Test network nodes, devices, or resources.
- Verify node or device availability.
- Read node, device or resource counters, and parameters.

Each application implements these menus differently. Refer to your application manual for detailed information about the dialog boxes for each application.

### Read Parameters

Read Parameters allows you to view a list of either configuration parameters or statistics for node or device parameters.

Read Parameters is an application-dependent menu item. Refer to your application manual for detailed information about the dialog boxes for Read Parameters.

### Self Test

Self Test allows you to perform a node or device self-test.

Self Test is an application-dependent menu item. Refer to your application manual for detailed information about the dialog boxes for Self Test.

## Control Menu

The Control menu enables you to do the following:

- Take nodes, devices or resources, on or off line.
- Upload, download, or reset nodes, devices, or resources.
- Set characteristics for nodes, devices, or resources.

Each application implements these menus differently. Refer to your application manual for detailed information about the dialog boxes for each application. The Control menu items are:

- Download
- Upload
- Set Parameters
- Reset Parameters

## Download

Download allows you to transfer data **from** the workstation to the device. Typical data transferred might be the code used to initialize the system, new software revisions or device configuration files.

Download is an application-dependent menu item. Refer to your application manual for detailed information about the dialog boxes for Download.

## Upload

Upload allows you to transfer data **to** the workstation. Typical data transferred might be statistics or configuration files.

Upload is an application-dependent menu item. Refer to your application manual for detailed information about the dialog boxes for Upload.

## **Set Parameters**

Set Parameters enables you to set the value of configuration parameters for either a node or device.

Set Parameters is an application-dependent menu item. Refer to your application manual for detailed information about the dialog boxes for Set Parameters.

## **Reset Parameters**

Reset Parameters enables you to reset the values of node or device counter parameters.

Reset Parameters is an application-dependent menu item. Refer to your application manual for detailed information about the dialog boxes for Reset Parameters.

## **Help Menu**

The Help menu items are index names for each OVRun application Help file. Click on an index entry, to view the help for that application.

1  
2  
3  
4  
5  
6  
7  
8  
9  
10  
11  
12  
13  
14  
15  
16  
17  
18  
19  
20  
21  
22  
23  
24  
25  
26  
27  
28  
29  
30  
31  
32  
33  
34  
35  
36  
37  
38  
39  
40  
41  
42  
43  
44  
45  
46  
47  
48  
49  
50  
51  
52  
53  
54  
55  
56  
57  
58  
59  
60  
61  
62  
63  
64  
65  
66  
67  
68  
69  
70  
71  
72  
73  
74  
75  
76  
77  
78  
79  
80  
81  
82  
83  
84  
85  
86  
87  
88  
89  
90  
91  
92  
93  
94  
95  
96  
97  
98  
99  
100

## Error Messages

---

When you have to call HP to correct an error, you need to report the following information:

- What you were doing when the error occurred.
- Your HP OpenView version number which is found in the **About** menu item from the Map menu in OVRun, the HP OpenView menu in OVAdmin, and the File menu in OVDDraw.
- Map files (.OVI, .OVD and .OVM)
- Microsoft Windows WIN.INI file
- Log files

Obviously, you will not always be able to get all this information, but the more information you can provide, the more quickly HP can solve the problem.



**MESSAGE** Cannot allocate memory. (0V101)

**CAUSE** You are running out of memory, or you have an internal error.

**ACTION** You are running too many non-HP OpenView Windows, HP OpenView Windows programs, or HP OpenView applications at the same time. Close all programs that are not necessary, or that you are not using. Note that some HP OpenView applications cannot run concurrently. Check your application documentation, then delete any applications not currently needed on the HP OpenView Windows workstation from your WIN.INI file.

If you still get the error message, save the appropriate information (see Page 1 of this appendix), then contact your local HP representative.

---

**MESSAGE** Cannot read file. (0V102)

**CAUSE** Disk reading error occurred because the floppy disk containing the data was removed from the drive, or the floppy disk is bad.

**ACTION** If the floppy disk was removed, replace it and try again. If the floppy disk was not removed, exit HP OpenView, run the MS-DOS *chkdsk* program on the disk, and, if the floppy is good, try again. If you still get this error, save the appropriate information (see Page 1 of this appendix), then contact your local HP representative.

---

**MESSAGE** Memory Error on GlobalLock. (0V103)

**CAUSE** Internal error.

**ACTION** Save the appropriate information (see Page 1 of this appendix), then contact your local HP representative.

---

**MESSAGE** Cannot close file. (0V104)

**CAUSE** Internal error.

**ACTION** Exit Microsoft Windows, restart HP OpenView Windows and open the file again to check for missing information. Save the appropriate information (see Page 1 of this appendix), then contact your local HP representative.

---

**MESSAGE**    **Cannot open file. (0V105)**

**CAUSE**        No space on disk, cannot access disk, or too many files open at once.

**ACTION**        Make sure you have enough room on your disk. Verify the spelling of the file name. If necessary, specify the full path name of the file, e.g., C:\Windows\Myfirst.

---

**MESSAGE**    **Help Error. (0V106)**

**CAUSE**        This is usually an installation problem indicating that the necessary help files are missing or cannot be found.

**ACTION**        Verify that all .HLP files for all HP OpenView applications are in the same directory as HELP.EXE. The name of this directory should be specified in the "HelpDir=" entry of your WIN.INI file under the section labeled [HP OpenView]. If you are running HP OpenView Windows from a directory other than the one containing your help files, the help file directory should be specified in your MS-DOS PATH statement.

---

**MESSAGE** Error on LoadString. (0V107)

**CAUSE** You are running out of memory, or you have an internal error.

**ACTION** You are running too many non-HP OpenView Windows, HP OpenView Windows programs, or HP OpenView applications at the same time. Close all programs that are not necessary, or that you are not using. Note that some HP OpenView applications cannot run concurrently. Check your application documentation, then delete any applications not currently needed on the HP OpenView Windows workstation from your WIN.INI file.

If you still get the error message, save the appropriate information (see Page 1 of this appendix), then contact your local HP representative.

---

**MESSAGE** Memory error on LocalLock. (0V109)

**CAUSE** Internal error.

**ACTION** Save the appropriate information (see Page 1 of this appendix), then contact your local HP representative.

---

**MESSAGE**    **Function is not implemented for selected symbol. (0V110)**

**CAUSE**        There is no application installed which can perform the menu item you chose on the type of symbol you selected.

**ACTION**        Save the appropriate information (see Page 1 of this appendix), then contact your local HP representative.

---

**MESSAGE**    **Cannot create file. (0V111)**

**CAUSE**        Disk space is full on the target drive, or a read-only file of the same name exists.

**ACTION**        If disk space is full, save file to a disk with more space available. If a file by the same name already exists, save the new file under a different name.

---

**MESSAGE**    **Cannot write file. (0V112)**

**CAUSE**        Disk space is full on the target drive, or a read-only file of the same name exists.

**ACTION**        If disk space is full, save file to a disk with more space available. If a file by the same name already exists, save the new file under a different name.

---

**MESSAGE** Invalid filename. (0V113)

**CAUSE** You have typed in an invalid MS-DOS filename.

**ACTION** Type in a valid MS-DOS filename. An MS-DOS filename can be up to 8 characters in length with an optional filename extension of up to 3 characters. The filename and extension must be separated by a period (.). See your MS-DOS manual for valid filename characters.

---

**MESSAGE** Error on CreateDialog. (0V120)

**CAUSE** You are running out of memory, or you have an internal error.

**ACTION** You are running too many non-HP OpenView Windows, HP OpenView Windows programs, or HP OpenView applications at the same time. Close all programs that are not necessary, or that you are not using. Note that some HP OpenView applications cannot run concurrently. Check your application documentation, then delete any applications not currently needed on the HP OpenView Windows workstation from your WIN.INI file.

If you still get the error message, save the appropriate information (see Page 1 of this appendix), then contact your local HP representative.

---



**MESSAGE**    **Status not available in OVDdraw and  
OVAdmin. (OV121)**

**CAUSE**        Internal error.

**ACTION**       Save the appropriate information (see Page 1 of  
this appendix), then contact your local HP  
representative.

---

**MESSAGE**    **Cannot initialize Help subsystem. (OV122)**

**CAUSE**        Usually an installation problem.

**ACTION**       Verify that all .HLP files for all HP OpenView  
applications are in the same directory as  
HELP.EXE. The name of this directory should be  
specified in the "HelpDir=" entry of your WIN.INI  
file under the section labeled [HP OpenView]. If  
you are running HP OpenView Windows from a  
directory other than the one containing your help  
files, the help file directory should be specified in  
your MS-DOS PATH statement.

---

**MESSAGE**    **Object Library error. (OV123)**

**CAUSE**        Internal error.

**ACTION**       Save the appropriate information (see Page 1 of  
this appendix), then contact your local HP  
representative.

---

**MESSAGE**    **Internal Error. (OV125)**

**CAUSE**        Internal error.

**ACTION**       Save the appropriate information (see Page 1 of  
this appendix), then contact your local HP  
representative.

---

**MESSAGE .OVD file does not exist. (0V127)**

**CAUSE** An HP OpenView Windows map is stored in three files, each containing a different extension. The one with the extension .OVD is missing.

**ACTION** Look for the MS-DOS file in another directory or on a backup disk. Move the file to the same directory as the other two map files (.OVI and .OVM). If you do not have the file, redraw the map.

---

**MESSAGE .OVI file does not exist. (0V128)**

**CAUSE** An HP OpenView Windows map is stored in three files, each containing a different extension. The one with the extension .OVI is missing.

**ACTION** Look for the MS-DOS file in another directory or on a backup disk. Move the file to the same directory as the other two map files (.OVD and .OVM). If you do not have the file, redraw the map.

---

**MESSAGE .OVM file does not exist. (0V129)**

**CAUSE** An HP OpenView Windows map is stored in three files, each containing a different extension. The one with the extension .OVM is missing.

**ACTION** Look for the MS-DOS file in another directory or on a backup disk. Move the file to the same directory as the other two map files (.OVD and .OVI). If you do not have the file, redraw the map.

---



**MESSAGE** Cannot run multiple instances of {program}. (0V130)

**CAUSE** You are attempting to run a second session of OVRun, OVDraw or OVAdmin, before closing the first session.

**ACTION** Either continue to use the first session, or close it, then start the next session. Note that sometimes one window is hidden behind another. Try minimizing some of your windows to see what is behind them and check icons to see if you have minimized an HP OpenView Windows program. If so, double click on the icon to continue using it.

---

**MESSAGE** Cannot access the call. (0V131)

**CAUSE** The application program attempted to call a procedure that is not supported in the HP OpenView Windows program currently running. There is either an inaccurate entry for the application in WIN.INI or an internal error.

**ACTION** Check that your WIN.INI file entry for this application is correct (placement of commas is important). If the entry is correct, then save the appropriate information (see Page 1 of this appendix), then contact your local HP representative.

---

**MESSAGE Invalid map suffix. (0V132)**

**CAUSE** When you were using either **Change Map** or **Open Map**, you typed in a filename with an extension other than .OVM, .OVD, or .OVI.

**ACTION** Enter the filename with one of the three HP OpenView extensions (.OVM, .OVD, or .OVI), or with no extension.

---

**MESSAGE Cannot set message queue size. (0V133)**

**CAUSE** An error occurred in setting the message size. Neither the size given in the WIN.INI, nor the default size can be set.

**ACTION** Reset message queue size within the range of 8 to 120. Message queue size is reset only at the startup of a new Windows session.

---

**MESSAGE Queue size is out of range. (0V134)**

**CAUSE** An invalid number was entered in the Set Message Queue Size edit box. The size must be in the range of 8 to 120.

**ACTION** Choose a valid number from 8 to 120 for the queue size.

---

**MESSAGE Maximum Symbols is out of range. (0V135)**

**CAUSE** An invalid number was entered in the Set Maximum Symbols edit box. The maximum must be in the range of 8 to 1700.

**ACTION** Choose a valid number from 8 to 1700.

---

**MESSAGE Alarm notification time interval is out of range. (OV136)**

**CAUSE** An invalid number was entered in the Set Alarm Notification Time Interval edit box. The range must be between 30 - 3600.

**ACTION** Choose a valid number from 30 - 3600.

---

**MESSAGE Cannot create HP OpenView communication class. (OV200)**

**CAUSE** You are running out of memory, or you have an internal error.

**ACTION** You are running too many non-HP OpenView Windows, HP OpenView Windows programs, or HP OpenView applications at the same time. Close all programs that are not necessary, or that you are not using. Note that some HP OpenView applications cannot run concurrently. Check your application documentation, then delete any applications not currently needed on the HP OpenView Windows workstation from your WIN.INI file.

If you still get the error message, save the appropriate information (see Page 1 of this appendix), then contact your local HP representative.

---

**MESSAGE Bad Application Type. (OV201)**

**CAUSE** Internal error.

**ACTION** Save the appropriate information (see Page 1 of this appendix), then contact your local HP representative.

---

**MESSAGE** Too many applications. (0V202)

**CAUSE** There are too many HP OpenView applications installed.

**ACTION** Delete some of the entries under [HP OpenViewApps] in your WIN.INI file.

---

**MESSAGE** No applications in internal table. (0V203)

**CAUSE** Internal error.

**ACTION** Save the appropriate information (see Page 1 of this appendix), then contact your local HP representative.

---

**MESSAGE** Cannot execute application {program file}, error {DOS error #}. (0V204)

**CAUSE** You are running out of memory, or HP OpenView Windows could not find the program file.

**ACTION** You are running too many non-HP OpenView Windows, HP OpenView Windows programs, or HP OpenView applications at the same time. Close all programs that are not necessary, or that you are not using. Note that some HP OpenView applications cannot run concurrently. Check your application documentation, then delete any applications not currently needed on the HP OpenView Windows workstation from your WIN.INI file.

If you still get the error message, save the appropriate information (see Page 1 of this appendix), then contact your local HP representative.

---

**MESSAGE** No more objects. (OV206)

**CAUSE** Internal error.

**ACTION** Save the appropriate information (see Page 1 of this appendix), then contact your local HP representative.

---

**MESSAGE** Cannot create HP OpenView communication window. (OV207)

**CAUSE** You are running out of memory, or you have an internal error.

You are running too many non-HP OpenView Windows, HP OpenView Windows programs, or HP OpenView applications at the same time. Close all programs that are not necessary, or that you are not using. Note that some HP OpenView applications cannot run concurrently. Check your application documentation, then delete any applications not currently needed on the HP OpenView Windows workstation from your WIN.INI file.

If you still get the error message, save the appropriate information (see Page 1 of this appendix), then contact your local HP representative.

---

**MESSAGE** Cannot post message {messageID}. (0V208)

**CAUSE** One of your applications has had a critical error and stopped running.

**ACTION** Restart HP OpenView Windows from MS-DOS prompt. If you still get the error, save the appropriate information (see Page 1 of this appendix), then contact your local HP representative.

---

**MESSAGE** Cannot read default application name. (0V209)

**CAUSE** Internal error.

**ACTION** Save the appropriate information (see Page 1 of this appendix), then contact your local HP representative.

---

**MESSAGE** Named application did not initialize. (0V212)

**CAUSE** Due to some error during initialization, the application sent a message not to complete initialization.

**ACTION** Investigate problem internal to given application.

---

**MESSAGE** **Named application stopped endsession process. (0V213)**

**CAUSE** When queried for shutdown, the given application sent a message to keep going.

**ACTION** Usually none. This log is for informational purposes. If trouble occurs during shutdown, this may indicate a problem internal to the given application.

---

**MESSAGE** **Unable to create comm window class. (0V300)**

**CAUSE** You are running out of memory, or you have an internal error.

**ACTION** You are running too many non-HP OpenView Windows, HP OpenView Windows programs, or HP OpenView applications at the same time. Close all programs that are not necessary, or that you are not using. Note that some HP OpenView applications cannot run concurrently. Check your application documentation, then delete any applications not currently needed on the HP OpenView Windows workstation from your WIN.INI file.

If you still get the error message, save the appropriate information (see Page 1 of this appendix), then contact your local HP representative.

---

**MESSAGE** Unable to create comm window. (0V301)

**CAUSE** You are running out of memory, or you have an internal error.

**ACTION** You are running too many non-HP OpenView Windows, HP OpenView Windows programs, or HP OpenView applications at the same time. Close all programs that are not necessary, or that you are not using. Note that some HP OpenView applications cannot run concurrently. Check your application documentation, then delete any applications not currently needed on the HP OpenView Windows workstation from your WIN.INI file.

If you still get the error message, save the appropriate information (see Page 1 of this appendix), then contact your local HP representative.

---

**MESSAGE** No HP OpenView comm window. (0V302)

**CAUSE** Internal error.

**ACTION** Try again, or save the appropriate information (see Page 1 of this appendix), then contact your local HP representative.

---

**MESSAGE** No such object in map. (0V304)

**CAUSE** An application is requesting the status of a node or device which is not in the current map.

**ACTION** Make sure you are using the correct map for your applications.

---



**MESSAGE** No such string. (0V308)

**CAUSE** Either the atom string does not exist, or the atom object instance identifier is not valid.

**ACTION** Check to be sure that the string or ID is valid.

---

**MESSAGE** Error initializing configuration. (0V400)

**CAUSE** You are running out of memory, or you have an internal error.

**ACTION** You are running too many non-HP OpenView Windows, HP OpenView Windows programs, or HP OpenView applications at the same time. Close all programs that are not necessary, or that you are not using. Note that some HP OpenView applications cannot run concurrently. Check your application documentation, then delete any applications not currently needed on the HP OpenView Windows workstation from your WIN.INI file.

If you still get the error message, save the appropriate information (see Page 1 of this appendix), then contact your local HP representative.

---

**MESSAGE** Error adding entry to configuration. (0V407)

**CAUSE** Disk space is full on the target drive, or a read-only file of the same name exists.

**ACTION** If disk space is full, save file to a disk with more space available. If a file by the same name already exists, save the new file under a different name.

---

**MESSAGE** Configuration entry does not exist.  
(0V408)

**CAUSE** There is no information stored for the symbol name and type that you entered.

**ACTION** Use the “?” button to select the name of an symbol that exists in the map you are currently using.

---

**MESSAGE** Error reading configuration entry.  
(0V409)

**CAUSE** Disk reading error occurred because the floppy disk containing the data was removed from the drive, or the floppy disk is bad.

**ACTION** If the floppy disk was removed, replace it and try again. If the floppy disk was not removed, exit HP OpenView Windows, run the MS-DOS *chkdsk* program on the disk, and, if the floppy is good, try again. If you still get this error, save the appropriate information (see Page 1 of this appendix), then contact your local HP representative.

---

**MESSAGE** Cannot read configuration initialization strings. (0V411)

**CAUSE** You are running out of memory, or you have an internal error.

**ACTION** You are running too many non-HP OpenView Windows, HP OpenView Windows programs, or HP OpenView applications at the same time. Close all programs that are not necessary, or that you are not using. Note that some HP OpenView applications cannot run concurrently. Check your application documentation, then delete any applications not currently needed on the HP OpenView Windows workstation from your WIN.INI file.

If you still get the error message, save the appropriate information (see Page 1 of this appendix), then contact your local HP representative.

---

**MESSAGE** Configuration entry already exists. (0V412)

**CAUSE** Internal error.

**ACTION** Save the appropriate information (see Page 1 of this appendix), then contact your local HP representative.

---

**MESSAGE Configuration file is possibly corrupt. (OV413)**

**CAUSE** The last write to the file may have been interrupted, leaving the index in an invalid state.

**ACTION** Try again. If you still get this error, use an older version of your map from a backup disk.

---

**MESSAGE Invalid record size in configuration file. (OV414)**

**CAUSE** Internal error.

**ACTION** Save the appropriate information (see Page 1 of this appendix), then contact your local HP representative.

---

**MESSAGE Configuration data too small. (OV415)**

**CAUSE** Internal error.

**ACTION** Save the appropriate information (see Page 1 of this appendix), then contact your local HP representative.

---

**MESSAGE Error deleting configuration entry. (OV420)**

**CAUSE** Internal error.

**ACTION** Save the appropriate information (see Page 1 of this appendix), then contact your local HP representative.

---

**MESSAGE** Error message does not exist. (0V500)

**CAUSE** Internal error.

**ACTION** Save the appropriate information (see Page 1 of this appendix), then contact your local HP representative.

---

**MESSAGE** Unable to open log file {file name}.  
(0V501)

**CAUSE** No space on disk, cannot access disk, or too many files open at once.

**ACTION** Close as many files as you can. Make sure that the full path name of the log file is in the "Log=" entry under [HP OpenView] in your WIN.INI file. If you delete your log file, a new one is recreated the next time something is written to it.

---

**MESSAGE** Unable to write to log file {file name}.  
(0V502)

**CAUSE** No space on disk or invalid file name.

**ACTION** If out of space, delete some files on the disk using the Microsoft Windows MS-DOS Executive program. If the file name is invalid, correct your "Log=" entry under [HP OpenView] in your WIN.INI file. If you delete your log file, a new one is created the next time something is written to the log, but you lose the previous record.

---

**MESSAGE** Unable to seek log file {file name}  
(0V503)

**CAUSE** Internal error.

**ACTION** Save the appropriate information (see Page 1 of this appendix), then contact your local HP representative. Delete the log file. It is recreated the next time something is written to it.

---

**MESSAGE** Error closing log file {file name}  
(0V504)

**CAUSE** Internal error.

**ACTION** Save the appropriate information (see Page 1 of this appendix), then contact your local HP representative. Delete the log file. It is recreated the next time something is written to it.

---

**MESSAGE** No printer configured. (0V730)

**CAUSE** No printers were installed in the Microsoft Windows configuration.

**ACTION** Check your printer configuration using the Microsoft Windows Control program and reinstall if necessary.

---

**MESSAGE** Print Spooler out of disk space. (0V731)

**CAUSE** No more space on the disk.

**ACTION** Delete some files on the current drive.

---

**MESSAGE** **Print Spooler out of memory. (0V732)**

**CAUSE** You are running out of memory.

**ACTION** You are running too many non-HP OpenView Windows, HP OpenView Windows programs, or HP OpenView applications at the same time. Close all programs that are not necessary, or that you are not using. Note that some HP OpenView applications cannot run concurrently. Check your application documentation, then delete any applications not currently needed on the HP OpenView Windows workstation from your WIN.INI file.

If you still get the error message, save the appropriate information (see Page 1 of this appendix), then contact your local HP representative.

---

**MESSAGE** **Printer Error. (0V735)**

**CAUSE** Printer may not be configured correctly for Microsoft Windows.

**ACTION** Use the Microsoft Windows Control program to check the configuration of your printer.

---

**MESSAGE** **Configured printer cannot print graphics. (0V736)**

**CAUSE** The printer configured as the active printer for Microsoft Windows cannot print graphics.

**ACTION** Use the Microsoft Windows Control program to change your active printer to one which can print graphics.

---

MESSAGE **Cannot read map extension. (0V803)**

CAUSE Internal error.

ACTION Save the appropriate information (see Page 1 of this appendix), then contact your local HP representative.

---

MESSAGE **No Map. (0V804)**



CAUSE You tried to do something that expected a map to be loaded, but no map is loaded.

ACTION In OVRun, use the **Change Map** menu item to load a map. In OVDRAW, use either the **Open Map** or **New Map** menu items.

---

MESSAGE **Missing OVNSAPPS application; cannot read remote map. (0V808)**

CAUSE To load a host-based map, HP OpenView NS Monitor application must be installed. You do not have this application installed, and the host-based map set as your default map in WIN.INI (map=ovnsapps), or you just selected host-based map from the Change Map dialog box.

ACTION Use the **Change Map** menu item to select a local map.

---

MESSAGE **Print queue full. (0V810)**

CAUSE Currently, printer does not have enough memory to queue up new jobs.

ACTION Check printer to be sure that it is working, and try again after it has completed all previous jobs.

---



**MESSAGE** Can not set main menu. (0V900)

**CAUSE** Internal error.

**ACTION** Save the appropriate information (see Page 1 of this appendix), then contact your local HP representative.

---

**MESSAGE** Can not add new popup menu. (0V901)

**CAUSE** Internal error.

**ACTION** Save the appropriate information (see Page 1 of this appendix), then contact your local HP representative.

---

**MESSAGE** No generic menu item with that ID. (0V902)

**CAUSE** Internal error.

**ACTION** Save the appropriate information (see Page 1 of this appendix), then contact your local HP representative.

---

**MESSAGE** Menu Item already exists. (0V903)

**CAUSE** Two HP OpenView applications are trying to own the same menu item, but they cannot be run simultaneously.

**ACTION** Remove the application that caused this error message (the named in the error message title box). Check the removed application documentation for any restrictions on which other applications can be run with it. Contact your local HP representative to report the incompatibility.

---

**MESSAGE** Menu Item already exists as non-object specific. (0V904)

**CAUSE** Two HP OpenView applications are trying to own the same menu item, but they cannot be run simultaneously.

**ACTION** Remove the application that caused this error message (the one named in the error message title box). Check the removed application documentation for any restrictions on which other applications can be run with it. Contact your local HP representative to report the incompatibility.

---

**MESSAGE** Too many items in menu. (0V905)

**CAUSE** The combination of HP OpenView applications which you have installed is resulting in one of the menus being over 20 items long.

**ACTION** Remove one or more of the applications until you no longer get this error message.

---

**MESSAGE** Another application has registered for that object. (0V906)

**CAUSE** Two applications are trying to manage the same type of symbol in the map.

**ACTION** Remove the application that caused this error. Contact your local HP representative to report the incompatibility.

---

MESSAGE **Too many applications. (0V907)**

CAUSE You have more than 16 HP OpenView applications installed.

ACTION Remove one or more of the applications until you no longer get this error message.

---

MESSAGE **No application implements menu item {item number}. (0V908)**

CAUSE Internal error.

ACTION Save the appropriate information (see Page 1 of this appendix), then contact your local HP representative.

---

MESSAGE **No menu matching this string. (0V909)**

CAUSE Internal error.

ACTION Save the appropriate information (see Page 1 of this appendix), then contact your local HP representative.

---

MESSAGE **No item matching that id. (0V910)**

CAUSE Internal error.

ACTION Save the appropriate information (see Page 1 of this appendix), then contact your local HP representative.

---

**MESSAGE** No application with that window handle.  
(0V911)

**CAUSE** Internal error.

**ACTION** Save the appropriate information (see Page 1 of this appendix), then contact your local HP representative.

---

**MESSAGE** Menu already exists. (0V912)

**CAUSE** Two applications may be trying to add the same menu.

**ACTION** Remove the application that caused this message, then contact your local HP representative to report the inconsistency.

---

**MESSAGE** Invalid symbol type {symbol-id}. (0V913)

**CAUSE** Internal error.

**ACTION** Save the appropriate information (see Page 1 of this appendix), then contact your local HP representative.

---

**MESSAGE** Invalid Menu ID. (0V914)

**CAUSE** Internal error.

**ACTION** Save the appropriate information (see Page 1 of this appendix), then contact your local HP representative.

---

**MESSAGE** Error on MenuGetString. (0V915)

**CAUSE** Internal error.

**ACTION** Save the appropriate information (see Page 1 of this appendix), then contact your local HP representative.

---

**MESSAGE** Error adding generic menu: {menu id}. (0V916)

**CAUSE** Internal error.

**ACTION** Save the appropriate information (see Page 1 of this appendix), then contact your local HP representative.

---

**MESSAGE** Error adding generic menu item: {menu item id}. (0V917)

**CAUSE** Internal error.

**ACTION** Save the appropriate information (see Page 1 of this appendix), then contact your local HP representative.

---

**MESSAGE** Error adding Help Menu. (0V918)

**CAUSE** Internal error.

**ACTION** Save the appropriate information (see Page 1 of this appendix), then contact your local HP representative.

---

**MESSAGE** Error on CreateMenu. (0V919)

**CAUSE** You are running out of memory, or you have an internal error.

**ACTION** You are running too many non-HP OpenView Windows, HP OpenView Windows programs, or HP OpenView applications at the same time. Close all programs that are not necessary, or that you are not using. Note that some HP OpenView applications cannot run concurrently. Check your application documentation, then delete any applications not currently needed on the HP OpenView Windows workstation from your WIN.INI file.

If you still get the error message, save the appropriate information (see Page 1 of this appendix), then contact your local HP representative.

---

**MESSAGE** Error on ChangeMenu. (0V920)

**CAUSE** Internal error.

**ACTION** Save the appropriate information (see Page 1 of this appendix), then contact your local HP representative.

---

**MESSAGE** Too many menus. (0V921)

**CAUSE** The applications you have installed are resulting in a total number of menus greater than the maximum of 10.

**ACTION** Remove one or more applications to reduce the number of menus. Contact your local HP representative to report the inconsistency.

---

**MESSAGE** Unable to create HP OpenView map class.  
(0V1200)

**CAUSE** You are running out of memory, or you have an internal error.

**ACTION** You are running too many non-HP OpenView Windows, HP OpenView Windows programs, or HP OpenView applications at the same time. Close all programs that are not necessary, or that you are not using. Note that some HP OpenView applications cannot run concurrently. Check your application documentation, then delete any applications not currently needed on the HP OpenView Windows workstation from your WIN.INI file.

If you still get the error message, save the appropriate information (see Page 1 of this appendix), then contact your local HP representative.

---

**MESSAGE** Unable to create HP OpenView map window.  
(0V1201)

**CAUSE** You are running out of memory, or you have an internal error.

**ACTION** You are running too many non-HP OpenView Windows, HP OpenView Windows programs, or HP OpenView applications at the same time. Close all programs that are not necessary, or that you are not using. Note that some HP OpenView applications cannot run concurrently. Check your application documentation, then delete any applications not currently needed on the HP OpenView Windows workstation from your WIN.INI file.

If you still get the error message, save the appropriate information (see Page 1 of this appendix), then contact your local HP representative.

---



**MESSAGE** Unable to create HP OpenView legend class. (OV1300)

**CAUSE** You are running out of memory, or you have an internal error.

**ACTION** You are running too many non-HP OpenView Windows, HP OpenView Windows programs, or HP OpenView applications at the same time. Close all programs that are not necessary, or that you are not using. Note that some HP OpenView applications cannot run concurrently. Check your application documentation, then delete any applications not currently needed on the HP OpenView Windows workstation from your WIN.INI file.

If you still get the error message, save the appropriate information (see Page 1 of this appendix), then contact your local HP representative.

---

**MESSAGE** Error creating Dummy window class.  
(OV1400)

**CAUSE** You are running out of memory, or you have an internal error.

**ACTION** You are running too many non-HP OpenView Windows, HP OpenView Windows programs, or HP OpenView applications at the same time. Close all programs that are not necessary, or that you are not using. Note that some HP OpenView applications cannot run concurrently. Check your application documentation, then delete any applications not currently needed on the HP OpenView Windows workstation from your WIN.INI file.

If you still get the error message, save the appropriate information (see Page 1 of this appendix), then contact your local HP representative.

---

**MESSAGE** Error creating Dummy window. (0V1401)

**CAUSE** You are running out of memory, or you have an internal error.

**ACTION** You are running too many non-HP OpenView Windows, HP OpenView Windows programs, or HP OpenView applications at the same time. Close all programs that are not necessary, or that you are not using. Note that some HP OpenView applications cannot run concurrently. Check your application documentation, then delete any applications not currently needed on the HP OpenView Windows workstation from your WIN.INI file.

If you still get the error message, save the appropriate information (see Page 1 of this appendix), then contact your local HP representative.

---

**MESSAGE** No name for described object. (0V1402)

**CAUSE** You clicked on **OK** from the Describe dialog box before entering a name in the Name text box.

**ACTION** Enter a name for the symbol in the Name text box, then click on **OK**.

---

**MESSAGE** Unable to create HP OpenView alarm class. (OV1403)

**CAUSE** Not enough memory.

**ACTION** You are running too many non-HP OpenView Windows, HP OpenView Windows programs, or HP OpenView applications at the same time. Close all programs that are not necessary, or that you are not using. Note that some HP OpenView applications cannot run concurrently. Check your application documentation, then delete any applications not currently needed on the HP OpenView Windows workstation from your WIN.INI file.

If you still get the error message, save the appropriate information (see Page 1 of this appendix), then contact your local HP representative.

---

**MESSAGE** Unable to create HP OpenView alarm icon.  
(0V1404)

**CAUSE** Not enough memory.

**ACTION** You are running too many non-HP OpenView Windows, HP OpenView Windows programs, or HP OpenView applications at the same time. Close all programs that are not necessary, or that you are not using. Note that some HP OpenView applications cannot run concurrently. Check your application documentation, then delete any applications not currently needed on the HP OpenView Windows workstation from your WIN.INI file.

If you still get the error message, save the appropriate information (see Page 1 of this appendix), then contact your local HP representative.

---

**MESSAGE** Unable to create HP OpenView alarm data.  
(OV1405)

**CAUSE** Not enough memory.

**ACTION** You are running too many non-HP OpenView Windows, HP OpenView Windows programs, or HP OpenView applications at the same time. Close all programs that are not necessary, or that you are not using. Note that some HP OpenView applications cannot run concurrently. Check your application documentation, then delete any applications not currently needed on the HP OpenView Windows workstation from your WIN.INI file.

If you still get the error message, save the appropriate information (see Page 1 of this appendix), then contact your local HP representative.

---

MESSAGE Unable to add entry to alarm notification. (OV1406)

CAUSE Not enough memory.

ACTION You are running too many non-HP OpenView Windows, HP OpenView Windows programs, or HP OpenView applications at the same time. Close all programs that are not necessary, or that you are not using. Note that some HP OpenView applications cannot run concurrently. Check your application documentation, then delete any applications not currently needed on the HP OpenView Windows workstation from your WIN.INI file.

If you still get the error message, save the appropriate information (see Page 1 of this appendix), then contact your local HP representative.

---

**MESSAGE** Unable to display alarm notification.  
(0V1407)

**CAUSE** Not enough memory.

**ACTION** You are running too many non-HP OpenView Windows, HP OpenView Windows programs, or HP OpenView applications at the same time. Close all programs that are not necessary, or that you are not using. Note that some HP OpenView applications cannot run concurrently. Check your application documentation, then delete any applications not currently needed on the HP OpenView Windows workstation from your WIN.INI file.

If you still get the error message, save the appropriate information (see Page 1 of this appendix), then contact your local HP representative.

---

**MESSAGE** Too many entries in Show Alarm. (0V1408)

**CAUSE** More outstanding alarms than the maximum 512 allowed.

**ACTION** Select Change Map to remove all previous alarms or close and restart HP OpenView. **NOTE:** This will lose all previous alarm information. Print out alarm information first, if necessary.

---

**MESSAGE** No alarm notification available.  
(0V1409)

**CAUSE**

**ACTION** No action is needed. Click **OK** and continue.

---



**MESSAGE** Unable to create HP OpenView alarm notification dialog box. (OV1410)

**CAUSE** Not enough memory.

**ACTION** You are running too many non-HP OpenView Windows, HP OpenView Windows programs, or HP OpenView applications at the same time. Close all programs that are not necessary, or that you are not using. Note that some HP OpenView applications cannot run concurrently. Check your application documentation, then delete any applications not currently needed on the HP OpenView Windows workstation from your WIN.INI file.

If you still get the error message, save the appropriate information (see Page 1 of this appendix), then contact your local HP representative.

---

**MESSAGE** Too many alarm notifications. (OV1411)

**CAUSE** More alarm notifications than the maximum 512 allowed.

**ACTION** Select Change Map or close the Alarm Notification Dialog Box to remove all previous alarms.

**NOTE:** This will lose previous data.

---

**MESSAGE** Node does not exist in map. (0V1600)

**CAUSE** The node name you entered from the OVRun Goto dialog box does not exist in the current map.

**ACTION** Use the “?” button to get a list of all nodes in the current map, and choose one of them.

---

**MESSAGE** Picture name invalid. Cannot display it. (0V1701)

**CAUSE** The subnet symbol picture name does not exist; therefore, the picture can not be displayed.

**ACTION** From the OVDDraw program, select the Describe menu item and describe this symbol again using a picture name which exists in this map.

---

**MESSAGE** No valid data on clipboard to paste. (0V1702)

**CAUSE** No OVDDraw symbols have been Cut or Copied, therefore, there is nothing in the clipboard.

**ACTION** Using either the Cut or Copy menu items place a symbol in the clipboard, then use Paste to put it back on the map.

---

**MESSAGE** Error creating Template window class.  
(0V1703)

**CAUSE** You are running out of memory, or you have an internal error.

**ACTION** You are running too many non-HP OpenView Windows, HP OpenView Windows programs, or HP OpenView applications at the same time. Close all programs that are not necessary, or that you are not using. Note that some HP OpenView applications cannot run concurrently. Check your application documentation, then delete any applications not currently needed on the HP OpenView Windows workstation from your WIN.INI file.

If you still get the error message, save the appropriate information (see Page 1 of this appendix), then contact your local HP representative.

---

**MESSAGE** Error creating Template window. (0V1704)

**CAUSE** You are running out of memory, or you have an internal error.

**ACTION** You are running too many non-HP OpenView Windows, HP OpenView Windows programs, or HP OpenView applications at the same time. Close all programs that are not necessary, or that you are not using. Note that some HP OpenView applications cannot run concurrently. Check your application documentation, then delete any applications not currently needed on the HP OpenView Windows workstation from your WIN.INI file.

If you still get the error message, save the appropriate information (see Page 1 of this appendix), then contact your local HP representative.

---

**MESSAGE** Error copying data for {object name} (error number). (0V1705)

**CAUSE** An error occurred when HP OpenView Windows tried to copy the textual information from one symbol to another.

**ACTION** The error number in the message is an HP OpenView Windows error. Consult your documentation for more information.

---

**MESSAGE** Error deleting data for {object name}  
(error number). (0V1706)

**CAUSE** An error occurred when HP OpenView Windows  
tried to delete the textual information from one  
symbol to another.

**ACTION** Consult your HP OpenView Windows  
documentation for more information.

---

**MESSAGE** Error putting {object name} on clipboard  
(error number). (0V1707)

**CAUSE** An error occurred when HP OpenView Windows  
tried to place textual information about a symbol  
on the clipboard.

**ACTION** Consult your HP OpenView Windows  
documentation for more information.

---

**MESSAGE** Error pasting {object name} clipboard  
data (error number). (0V1708)

**CAUSE** An error occurred when HP OpenView Windows  
tried to paste the textual information about a  
symbol from the clipboard to map.

**ACTION** Consult your HP OpenView Windows  
documentation for more information.

---

**MESSAGE**    **Cannot put data on clipboard. (0V1709)**

**CAUSE**        You are running out of memory, or the clipboard is busy.

**ACTION**        If another application is writing to the clipboard, wait until it is done, then try again.

You are running too many non-HP OpenView Windows, HP OpenView Windows programs, or HP OpenView applications at the same time. Close all programs that are not necessary, or that you are not using. Note that some HP OpenView applications cannot run concurrently. Check your application documentation, then delete any applications not currently needed on the HP OpenView Windows workstation from your WIN.INI file.

If you still get the error message, save the appropriate information (see Page 1 of this appendix), then contact your local HP representative.

---

**MESSAGE** Cannot open clipboard for paste. (0V1710)

**CAUSE** You are running out of memory, or the clipboard is busy.

**ACTION** If another application is writing to the clipboard, wait until it is done, then try again.

You are running too many non-HP OpenView Windows, HP OpenView Windows programs, or HP OpenView applications at the same time. Close all programs that are not necessary, or that you are not using. Note that some HP OpenView applications cannot run concurrently. Check your application documentation, then delete any applications not currently needed on the HP OpenView Windows workstation from your WIN.INI file.

If you still get the error message, save the appropriate information (see Page 1 of this appendix), then contact your local HP representative.

---

**MESSAGE** Too many objects in the map. (0V1711)

**CAUSE** In OVDRAW, you are trying to add one more object than the maximum allowed in a map.

**ACTION** Delete some of the other objects in this map, and then try adding a new object again.

---

**MESSAGE** Too many pictures in map. (0V1712)

**CAUSE** In OVDraw, you are trying to create more than the maximum amount of pictures allowed, or you are trying to create a picture when the map is full.

**ACTION** Delete a picture or an object in the map, and then create a new picture.

---



---

## Additional Features Error Messages

**MESSAGE** Cannot find terminal emulator execution file name. (OV3001)

**CAUSE** Terminal emulator execution file name is not in the WIN.INI file.

**ACTION** Insert the correct terminal emulator execution name in the WIN.INI file.

---

**MESSAGE** Cannot spawn terminal emulator. (OV3002)

**CAUSE** Terminal emulator execution file is missing or not in path.

**ACTION** Install terminal emulator or check path.

---

**MESSAGE** Error drawing the map. (OV3011)

**CAUSE** Internal error.

**ACTION** Click on Index button and select Error Message Information for directions.

---

**MESSAGE** Invalid file. (OV3012)

**CAUSE** The specified file is not in ProbeView.

**ACTION** Check to make sure the file selected is the correct file.

---

**MESSAGE No filename specified. (0V3021)**

**CAUSE** No filename given.

**ACTION** Give a filename.

---

**MESSAGE Wildcards not allowed. (0V3022)**

**CAUSE** The characters \* and ? are not allowed in file names.

**ACTION** Rename the selection list file.

---

**MESSAGE Cannot open <filename>. (0V3023)**

**CAUSE** The filename given does not exist.

**ACTION** Check the file name given.

---



# Template Window

---

The Template window displays the available symbols for OVDraw. The Template menu contains the following items:

- Subpictures
- Computers
- Components
- Line Types
- Text Styles

You can select and display from a group of various types and styles under each menu item.

If no symbols appear, or all symbols appear with question marks inside the symbol, OVDraw is not installed correctly. Please check installation, and re-install if necessary.

If only one or two symbols appear with question marks, they are probably application added symbols. Please check installation of applications that use these symbols.

---

# Subpictures

The subpicture symbol is available in the Subpictures Menu.



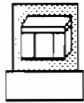
Subpicture

**Figure B-1. Subpicture**

---

# Computers

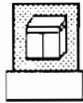
The types of computers available for selection are shown below. See your application manual to determine which type of computer is selectable for that application.



Large Computer



Medium Computer 1



Medium Computer 2



Small Computer



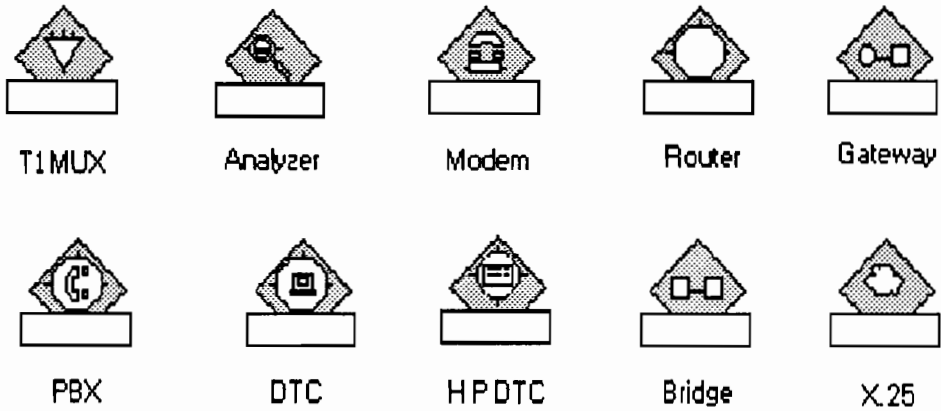
PC Computer

**Figure B-2. Sample Computers**

---

# Components

The types of components available for selection are shown below.



**Figure B-3. Sample Components**



---

## Line Types

There are 12 line types available for selection and they vary in thickness and style. You can use the line types to represent different connections in your network. For example, you can use different line thicknesses to represent a LAN and the connections from computers to a LAN.

---

## Text Styles

You can select from 14 different styles and sizes of text. You can specify each size using various styles, for example, **bold** or underline.

## Additional Features

---

To install the HP OpenView menu items for these additional features, follow the HP OpenView Windows Installation process.

---

### LanProbe Converter

This optional feature is for users who want to convert files produced by ProbeView, from a LanProbe, into HP OpenView Windows graphical maps. To install the HP OpenView menu item for the converter, follow the HP OpenView Windows Installation process.

Start the converter by selecting the menu item ProbeView Convert from the Convert menu. A dialogue box asks for the file, which must have a .csv suffix

A message box displays the name and metric of the map, and another message box displays any invalid map files. The converter then creates several pictures, one for each LAN segment, plus 2 special pictures. TOP PICTURE contains a subnet symbol for each of the LAN segments. Note that the converter does not set this picture to be the map's top picture. The other special picture is NOT VISIBLE, which contains all of the nodes LanProbe could not correctly place in any of the other segments. A message box appears to let you know that the converter is finished.

In addition to creating a symbol for each node in the file, the converter also updates the **describe** information for each node. ProbeView gives several pieces of information: the ethernet address, the internet address, distance from the LanProbe, status, and type. All of these are put into the notepad of the node along with any other information provided by ProbeView.



Convert uses default mappings from ProbeView types to HP OpenView symbols. The defaults are as follows:

<u>ProbeView Type</u>	<u>HP OpenView Symbol</u>
WorkStn	PC
FileSrv	Small Computer
PrintSrv	Small Computer
MainFrm	Large Computer
OtherNode	Medium Computer
NewNode	Small Computer
Bridge	Bridge
Repeater	Small Computer
Gateway	Gateway
Router	Router
LanProbe	Small Computer

These defaults are overridden by adding WIN.INI entries. The Application Name must be LanProbe Convert, and the keyname must be one of the strings given above, followed by an equal sign, followed by the decimal value of the HP OpenView Windows symbol type. For example, to have the Router use the SYM\_GATEWAY symbol, put an entry in the WIN.INI file as follows:

```
[LanProbe Convert]
```

```
Router=4922
```

The following list of numbers is associated with each symbol:

Subpicture	4898
Large Computer	4903
Medium Computer 1	4904
Medium Computer 2	4905
Small Computer	4906
PC	4907
T1 Mux	4919
Analyzer	4920
Modem	4921
Router	4922
Gateway	4923
PBX	4924
DTC	4925
Bridge	4926
X.25	4927
HP DTC	4928

---

## **NewWave Bridge**

A NewWave HP OpenView Bridge is provided for those who are using the NewWave environment, and would like to use HP OpenView Windows in the same environment. Install the bridge in NewWave using the HP OpenView Windows installation process. Once installed, HP OpenView Windows operates in NewWave.

For instructions for using NewWave tools or HP OpenView Windows, refer to the appropriate application documentation.

---

# Use Selection List

## Selection List

This optional feature is provided for those who want to create, save, and use lists of selected symbols. Select a set of symbols, then click on the Save Selection List menu item from the Map menu. A dialogue box requests a file name. In the future, when you wish to select that set of symbols, choose the Use Selection List menu from the Map menu. The dialogue box requests the file name; select the appropriate file for that set of symbols. Selecting a list automatically selects those nodes on the map, and allows you to perform an operation on those nodes from the menu. Click on **Use Selection List** from the Map menu and the dialog box in Figure C-1 will be displayed.

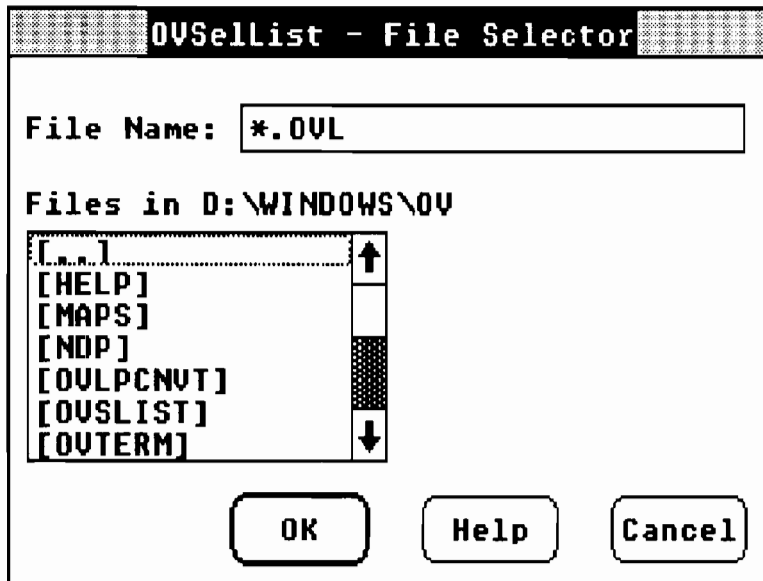


Figure C-1. File Selector Dialog Box

In the file name field \*.LIS is displayed to enable you to view all lists in the current directory, or to select from another directory. To select a list, double click on the list name in the list box below, or click on it once and click on **OK**. If the name of the list is not displayed in the list box, click on the appropriate drive where the list is located. Click on [..] to go back one directory. Click on [..] until you get to the directory where your list is located.

The line above this field shows the path and directory that is selected. Then click on the list that you want to select. The directory and path displays on the line above, for example: Files in D:\OV\WEST.

Another way to select a list is to highlight the text in that field, type the name of that list in the file name field, and click on **OK**. The path and directory where the list is located needs to be specified if the list is not in the current directory.

## Command Buttons

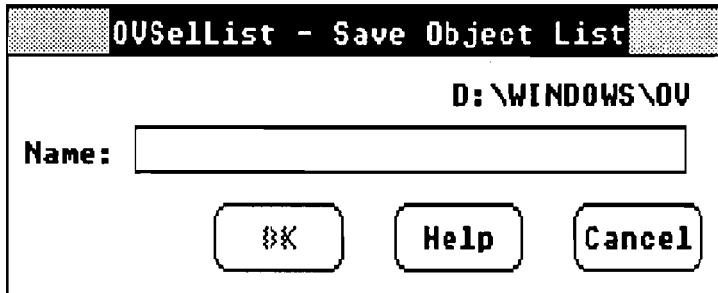
- |               |   |
|---------------|---|
| <b>OK</b>     | Click on <b>OK</b> to select the nodes in the list.                       |
| <b>Help</b>   | Click on <b>Help</b> to display the online help for this dialog box.      |
| <b>Cancel</b> | Click on <b>Cancel</b> to exit this dialog box without taking any action. |

---

## Save Selection List

Save Selection List is used to create and save lists of nodes. A saved list can then be used to select those nodes and perform an operation on them from the menu.

1. Shift click on all the nodes on the map that you want to select for your list.
2. Click on **Save Selection List** on the map menu item. Figure C-2 shows the dialog box that is displayed.



**Figure C-2. Save Object List Dialog Box**

3. Choose a name for the list of nodes and type it in the field called Name:. This saves the new list under that name in the current directory, and displays it at the top, right, of the dialog box. If you want to save the list in another directory, type in the drive and path where you want the list to be saved, for example: D:\WEST\MAX. The .LIS extension is automatically added to the name (MAX.LIS).
4. Click on **OK** to save the list. The nodes will remain selected on the map.

### **Adding or deleting node names from existing lists:**

1. Select that list with the **Use Selection List** menu item.
2. Shift click on nodes you want to add to the list or shift click on nodes that are selected, but you want to delete from the list.
3. Go back to the **Save Selection List** and save the list with the same name.

4. Click on **OK**, when the dialog box appears asking if you would like to replace the existing list. This new list will overwrite the previous one.

To delete a list of nodes use the DOS or MS Windows delete command. You can either:

- From the DOS prompt, type in the path and directory where the file is located, for example: D:WEST. Type **DEL MAX.LIS**, to delete that list; or
- From the MS-DOS Executive window, click on the list that you want to delete, for example: **MAX.LIS**. Pull down the **File** menu and select **delete**. The dialog box in Figure C-3 displays. Select **OK** to delete that list.

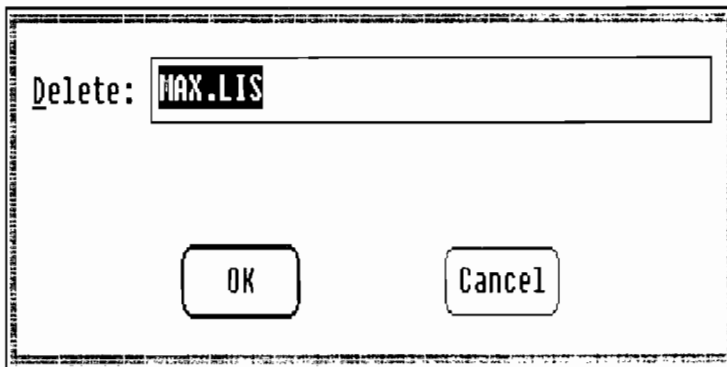


Figure C-3. Delete Dialog Box

The application uses the current directory as the default directory to look for selection list files. You can override this default by setting the keyname `DefPath` to the desired path. This should be from the application name `OVSelList`. For example, to have the default path be `d:\`, enter the following in the `WIN.INI` file:

```
[OVSelList]
DefPath=d:\
```

---

## Terminal Connection

This is an optional feature for users who would like to run AdvanceLink for Windows from HP OpenView. To use this additional feature, AdvanceLink for Windows must be installed.

The terminal emulator may be started by selecting a computer object on the map and choosing the Connection Menu item from the Control menu in OVRun. The host computer will connect to the selected computer using that computer's configuration files.

To allow automatic connection with a computer, without user input after the menu item selection, the configuration file name is extracted from the node name of the selected object in the map.

If no configuration file exists, as in the initial connection, create the appropriate configuration file from within AdvanceLink terminal window. Save and name the configuration file using naming conventions of the terminal emulator and OVTerm.

The configuration file name must be the same as the first section of the selected computer's node name. If the node name has more than one section, the section must be separated from the rest of the node by a period. If the first node name section is more than 8 characters, it will be truncated when used as a configuration file, since file names are limited to 8 characters. The file extension name must be the one required by the terminal emulator. For example, CECILGREEN.IND.HP becomes CECILGRE.ACF.

The configuration file extension name and the terminal emulator execution file are fetched from the WIN.INI file. These are installed by the OVTerm installation, but may be updated by the user in the event of changes required by the terminal emulator. The format is:

```
[OVTerm]
```

```
TerminalEmulator=advlinkt.exe
```

```
TermEmulConfigExt=acf
```





# Glossary

---

## A

**About:** About provides the version number, release date, and copyright information for your HP OpenView Windows software.

**Application-Specific Menu Item:** A general term used to refer to a menu item that is implemented by an HP OpenView application other than HP OpenView Windows.

## C

**Caption Bar:** The bar across the top of the HP OpenView Windows screen containing the Title, Microsoft Windows Control Box and Size Box.

**Check Box:** Small square box preceding text that allows you to make a choice. By clicking on the check box, you select the option. An *X* in a check box indicates that the item is selected. By clicking on a selected check box, you deselect that choice.

**Click:** Pressing and releasing a mouse button.

**Command Button:** Text surrounded by a rounded box. By clicking the mouse on the text you select that function. For example, clicking on the Help command button takes you to the Help for the current window.

**Connect Mode:** Connect mode works the same as adding a line except that there must be an object underneath the cursor when the mouse is pressed down and an object underneath the cursor when the mouse is released.

**Control Menu:** The Control menu enables you to take nodes, devices or resources, on or off line, upload, download, or reset nodes, devices, or resources.

Each application implements these menus differently. Refer to your application manual for detailed information.

**Cursor:** A small shape used to mark which symbol you want to select or which field you want to enter data into. For OVRun and OVAdmin, the cursor is an arrow. For OVDraw, the cursor changes depending on the edit mode.

## D

**Data Communication Specialist:** An individual responsible for troubleshooting network communication problems and providing the best possible performance results for the network.

**Dialog Box:** Windows where you enter or view information.

**Distributed Systems Operator:** The person responsible for the day-to-day routine operation of the network, the first to note network problems, and initiate network diagnostic and troubleshooting procedures.

**Double Click:** Quickly pressing and releasing a mouse button twice.

**Drag:** Pressing the mouse button and holding it down while you move the cursor across the work area. For example, when you move the cursor after pressing the mouse button on a symbol, you *drag* the symbol from one part of the work area to another.

## E

**Error Messages:** HP OpenView error message boxes contain a help button. When you select this help button, the cause and the action for the error display. Error messages are also included on-line as part of the Help files. See Appendix A for text of the Error Messages.

**Exit:** Click on **Exit** to end a session of HP OpenView Windows. A dialog box appears with **OK** and **Cancel** buttons. Click on **OK** to end your HP OpenView Session, or click on **Cancel** to continue.

## H

**Help Command Button:** Each dialog box contains a Help command button. By clicking on the Help command button, you can access help on how to use the dialog box.

**Help Dialog Box:** The dialog box displayed when you select Help from either the Help menu or other dialog box. The Help Box contains textual information about a specific menu item.

**Help Index:** Each HP OpenView application contains an index of its specific help topics. By clicking on the Help menu from HP OpenView Windows, you can view a list of help indexes. Click on the help index you want to view. From the index, you can click on any of the topics to view the help for the topic you select.

## I

**Icon:** A small pictorial representation of an application. To change a window to an icon (minimize), double click on the caption bar. To open an icon (maximize), double click on the icon. The default area for displaying icons is at the bottom of the screen.

## L

**List Selector Box:** A special dialog box containing a list of names such as node, picture or file names. You can choose the name you want to select or change directories to select a file from another directory.

## M

**MS-DOS:** The operating system used by the Vectra.

**Map:** The file which contains all the pictures for one network.

**Map Area:** Portion of the OVRun window where your map is displayed and where color changes indicate status. This is also the area where you select symbols to perform a function such as a test.

**Menu:** List of the HP OpenView options.

**Menu Bar:** The second bar across the top of the HP OpenView Windows screen that lists the available menus.

**Menu Item:** List of options available under each menu from which you can make a selection.

**Microsoft Windows:** The environment used to run HP OpenView Windows.

**Microsoft Windows Control Box:** If you pull down, this box contains a menu with items that allow you to change the size, move or close a window. The Microsoft Windows control box is displayed in the upper left hand corner of the HP OpenView Windows title bar.

**Mouse:** The device used to move the cursor around the HP OpenView Windows screen.

**Mouse Button:** One of two buttons on the mouse used for selecting symbols, menu items, or for drawing lines. HP OpenView Windows uses the left button only.

## N

**Network Manager:** This person is responsible for the overall performance of the network.

## O

**OVAdmin:** One of three HP OpenView Windows programs. OVAdmin allows you to set HP OpenView Windows and other application configuration parameters.

**OVDDraw:** One of three HP OpenView Windows programs. OVDDraw allows you to draw your network map.

**OVRRun:** One of three HP OpenView Windows programs. OVRRun allows you to run the application-specific programs using HP OpenView Windows.

**Option Button:** Small circular area within a dialog box that represents a choice. Click on an option button to select your choice. When an option button is chosen, it appears as a circle with a black dot in it. You can select only one option button from each group of option buttons.

## P

**Picture:** An individual view within your map that represents one portion of your network. For example, a picture might represent the network on one floor of a building. A map might contain several pictures, each representing a different part of the network.

## R

**Release:** Used in conjunction with drag. After dragging the mouse, you release the mouse button.

## S

**Scroll Bars:** Used to move from left to right or up and down dialog boxes.

**Scroll Box:** The rectangular portion of the scroll bars that moves either up or down or right to left to indicate the direction you are scrolling. Also, the placement of the scroll box in the scroll bar indicates if you are at the top, middle or bottom of the displayed file.

**Select:** Choosing a symbol or menu item by clicking on it. When a symbol is selected from OVRun it is highlighted by a gray box. When you select a symbol, all other symbols are deselected. To select more than one symbol, hold the SHIFT key while clicking on the symbols you want to select.

**Selected Symbol:** A symbol which you have clicked on is displayed with a gray highlight. When you click on a menu item, the symbol currently selected is used.

**Subpicture Symbol:** A symbol used to represent another picture within the map. In OVRun subpicture symbols reflect the most critical status for all symbols within their corresponding picture.

**Symbol:** Graphics used to represent your network. Five types of symbols exist: subpicture, computer, component, line or text.

## T

**Template Window:** Displays the available symbols for OVDDraw. The Template menu within the Template window lets you select and display either the subpictures, computers, components, lines, or text available for selection. See Appendix B for additional information on the Template window.

**Text Box:** The part of a dialog box where you type data.

**Title:** The name of the current map displayed in the Title Bar. In message boxes, the title is the network management application name.

**Top Picture:** The picture in your map first displayed when you run OVRun. HP recommends that the Top Picture contain one subpicture symbol for each picture in the map.

## W

**Window:** A portion of the screen used for displaying information. By using windows you can view several pieces of information on the screen at the same time.

**Work Area:** In OVDDraw the portion of the window where you create your map.

**Workstation Printer:** The printer connected to the HP OpenView Windows Workstation that is the currently active Microsoft Windows printer. This printer must have graphics printing capability to print the HP OpenView Windows map pictures.

## Z

**Zoom:** The zoom dialog box contains a window representing the entire map. Lines and text are not shown in this window. Each object is represented by a dot with the status color of the object. There is also a rectangle representing the current size and position of the main window in relation to the map. Use

the left mouse button to click on the rectangle and drag it to change the view of the map. Changing the size of the zoom changes the size of the rectangle. Click on **OK** to change the view, the selected zoom mode, and the display area inside of the rectangle.

Zoom mode has the following values:

2X displays the map twice the normal size.

1X (normal) is the default display size.

1/2X displays the map 1/2 the normal size.

1/4X displays the map 1/4 the normal size.

1/8X displays the map 1/8 the normal size.

Zoom must be set to (normal) to print a map, and a setting stays in effect until you change it or you quit.





# Index

---

## A

- About, 4-11, 6-6, 7-17
- Active Printer, 3-8
- Add, 4-19-4-20, 5-5
  - Line, 4-22
  - Symbol, 4-21
  - Text, 4-21
- Additional Features,
  - C-1-C-8
- Alarm Notification, 7-6
- Alarms, 7-6
- Application-Added, 7-8
- Application-Dependent, 7-8
- Application-Specific, 1-1, 7-8
- Application-Specific Menus,
  - 6-7

## C

- Cancel Command Button,
  - 3-6
- Caption Bar, 4-5
  - Microsoft Windows Control
    - Box, 4-5
    - Size Box, 4-5
    - Title, 4-5
- Change Map, 6-3, 7-15
- Check Box, 3-6
- Check Consistency, 4-27
- Choose, 4-19, 4-26
- Clipboard, 4-23
- Command Button, 3-10

- Command Buttons
  - ? Button, 3-7
  - Cancel, 3-6
  - Done, 3-10
  - Help, 3-6, 3-9
  - Index, 3-10
  - Last Topic, 3-10
  - OK, 3-6
  - Print, 3-6
- Component, B-3
  - Adding, 4-21
  - Describing, 4-24
- Computer, B-2
  - Adding, 4-21
  - Describing, 4-24
- Connect, 4-19, 4-22
- Control Menu, 7-22
  - Download, 7-22
  - Reset Parameters, 7-23
  - Set Parameters, 7-23
  - Upload, 7-22
- CONTROL.EXE, 3-8
- Copy, 4-19, 4-23
- Critical, 7-4-7-5
- CTRL-ALT-DEL, 3-4
- Cursor, 4-19
- Cut, 4-19, 4-23

## D

- Delete, 4-19, 4-23
- Delete Picture, 4-14, 4-17
- Describe, 4-19, 4-24, 5-8, 5-11, 7-19
  - Application-Specific Information, 4-25
  - Copy Information, 4-23
  - Label, 4-25
  - Name, 4-24
  - Notepad, 4-25
- Diagnose Menu, 7-21
  - Read Parameters, 7-21
  - Self Test, 7-21
- Dialog Boxes, 3-5
- Done Command Button, 3-10
- Download, 7-22

## E

- Edit Menu, 4-19
  - Add, 4-20
  - Connect, 4-22
  - Copy, 4-23
  - Cut, 4-23
  - Describe, 4-24
  - Move, 4-19
  - Paste, 4-23
  - Select, 4-26
- Erase Picture, 4-14, 4-17
- Error Messages, A-1–A-51
- Exit, 3-6, 4-11, 6-6, 7-17

## F

- Field, 3-6
- File Menu, 4-7
  - About, 4-11
  - Exit, 4-11
  - New Map, 4-7
  - Open Map, 4-8

- Print Object List, 4-10
- Save Map, 4-9
- Save Map As, 4-9

## G

- Get, 7-12
  - Picture, 7-11
  - Previous Picture, 7-11
  - Top Picture, 7-11
- Get Picture, 4-14
- Getting Started with HP OpenView Windows Tutorial, 3-2
- Go To, 7-12
  - Picture, 7-11
  - Previous, 7-11
  - Top, 7-11
- Grid, 4-26

## H

- Help
  - Command Button, 3-6, 3-9
  - Dialog Box, 3-10
  - Index, 3-9
  - OAdmin Menu, 6-7
  - OVDRAW Menu, 4-28
  - OVRUN Menu, 7-23
  - Window, 3-9
- Help Menu, 4-28, 6-7
- Host Based Map, 6-4, 7-16
- Hot Spot, 4-19
- HP OpenView Menu
  - About, 6-6
  - Exit, 6-6
  - Set Alarm Notification Time Interval, 6-6
  - Set Message Queue Size, 6-5
- HP OpenView Network Management Workstation, 1-1
- HP OpenView Windows, 7-8
  - Menu, 6-3

OVAdmin, 6-1  
OVDDraw, 4-4  
OVRun, 7-1

## I

Identify, 7-19  
Index, 3-9  
Index Command Button,  
3-10  
Informational, 7-4  
Insert, 4-19-4-20, 4-23, 5-4  
Line, 4-22  
Symbol, 4-21  
Text, 4-21  
Installation, 2-1-2-4

## K

Keep Map, 4-9

## L

Label, 5-8  
LanProbe Converter, C-1  
Last Topic Command  
Button, 3-10  
Line  
Adding, 4-22  
Describing, 4-24  
Moving, 4-20  
Types, B-4  
List Selector, 3-7  
List Selector Box, 3-7  
Local Map, 6-4, 7-16

## M

Map, 4-3, 5-1  
Area, 7-7  
Change, 7-15  
Host Based, 6-4, 7-16  
Legend, 7-4, 7-15

Local, 6-4, 7-16  
Menu, 7-10  
New, 4-7  
Open, 4-8  
Print, 4-10  
Save, 4-9  
Save As, 4-9  
Set Default, 6-3  
Status, 7-3

## Map Menu

About, 7-17  
Change Map, 7-15  
Exit, 7-17  
Go To, 7-12  
Go To Picture, 7-11  
Go To Previous, 7-11  
Go To Top, 7-11  
Map Legend, 7-15  
Print Object List, 7-14  
Print Picture, 7-13  
Zoom, 7-17

## Menu Bar, 4-5, 7-7

## Microsoft Windows

Concepts, 3-4  
Control Box, 3-10, 4-5, 7-7  
Control Menu, 1-4  
CONTROLEXE, 3-8  
MS-DOS Executive program,  
4-1, 6-1, 7-1  
Print Spooler, 3-8, 4-18, 7-13  
System Clipboard, 4-23  
WIN.INI, 6-3, 6-5-6-6

## Monitor Menu, 7-18

Describe, 7-19  
Identify, 7-19  
Show Alarms, 7-20

## Monitor Status, 7-6

## Move, 4-19

Line, 4-20  
Symbol, 4-19  
Text, 4-19

## MS-DOS, 4-1, 6-1, 7-1

## MS-DOS Stored Map, 6-4

## **N**

Name, 4-3, 5-8  
Name Picture, 4-15,  
5-10-5-11  
Network Picture, 4-3, 5-1,  
7-10  
New Map, 4-7  
New Picture, 4-13, 5-11  
NewWave Bridge, C-3  
Notepad, 5-8

## **O**

OK, 7-4  
OK Command Button, 3-6  
Open Map, 4-8  
Option Button, 3-6  
Options Menu, 4-26  
    Check Consistency, 4-27  
    Grid, 4-26  
    Zoom, 4-26  
Output, 3-6  
OVAdmin, 1-4, 6-1  
OVAdmin.EXE, 6-1  
.OVD, 4-10  
OVDDraw, 1-4, 4-1  
OVDDraw.EXE, 4-1  
.OVI, 4-10  
.OVM, 4-10  
OVRun, 1-4, 7-1  
OVRun Menus  
    Application-Added, 7-8  
    Application-Dependent, 7-8  
    Available, 7-8  
    HP OpenView Windows, 7-8  
    Unavailable, 7-8  
OVRun.EXE, 7-1

## **P**

PAM, 4-1, 6-1, 7-1  
Parameter  
    Read, 7-21  
    Reset, 7-23  
    Set, 7-23  
Paste, 4-19, 4-23  
Picture, 4-3, 5-1  
    Go To, 7-11-7-12  
    Print, 7-13  
Picture Menu, 4-12  
    Delete Picture, 4-17  
    Erase Picture, 4-14  
    Get Picture, 4-14  
    Name Picture, 4-15  
    New Picture, 4-13  
    Print Picture, 4-18  
    Set Top Picture, 4-16  
Print  
    Command Button, 3-6  
    Map, 4-10  
    Object List, 4-10, 7-14  
    Picture, 4-18, 7-13  
Printer  
    Active Printer, 3-8  
    Microsoft Windows Print  
        Spooler, 3-8, 7-13  
    Workstation Printer, 3-8

## **R**

Read Parameters, 7-21  
Reset Parameters, 7-23

## **S**

Save Map, 4-9, 4-14-4-15, 5-10  
Save Map As, 4-9, 5-12  
Scroll Bars, 3-10, 4-5, 7-7  
Select, 4-19, 4-26, 7-9  
Selection List, C-4  
Self Test, 7-21

- Set Alarm Notification Time
  - Interval, 6-6
  - WIN.INI, 6-6
- Set Default Map, 6-3
  - WIN.INI, 6-3
- Set Maximum Number of Symbols, 6-5
- Set Message Queue Size, 6-5
  - WIN.INI, 6-5
- Set Parameters, 7-23
- Set Status Propagation, 6-5
  - WIN.INI, 6-5
- Set Top Picture, 4-16, 5-11
- SetMaximum Number of Symbols
  - WIN.INI, 6-6
- Show Alarms, 7-20
- Size Box, 4-5
- Status
  - Map, 7-3
  - Monitor, 7-6
  - Symbol, 7-5
- Store Map, 4-9
- Subpicture symbol, 4-3, 4-16, 5-1, 7-5, 7-11
- Subpictures, B-2
  - Describing, 4-24
- Symbol
  - Adding, 4-21
  - Component, B-3
  - Computer, B-2
  - Describing, 4-24
  - Moving, 4-19
  - Selecting, 7-9
  - Status, 7-5
  - Subpicture, B-2
  - Types, 4-3, 4-20, B-1
- Symbol name, 5-8
- Symbol States
  - Critical, 7-4
  - Informational, 7-4
  - OK, 7-4
  - Unknown, 7-4
  - Warning, 7-4

## T

- Template
  - Menu, 4-20, 5-5, B-1
  - Window, 4-5, 4-20, B-1
- Terminal Connection, C-8
- Test Map, 4-27
- Text
  - Adding, 4-21
  - Box, 3-6
  - Moving, 4-19
  - Styles, B-4
- Textual Information, 5-8
- Title, 4-5
- Top Picture, 4-3, 4-16, 5-1, 7-5, 7-11

## U

- Unknown, 7-4
- Upload, 7-22

## V

- Vectra, 1-1
- View
  - Alarms, 7-20
  - Parameters, 7-21

## W

- Warning, 7-4–7-5
- WIN.INI File, 6-3, 6-5–6-6
- Window
  - Help, 3-9
  - OVAdmin, 6-1
  - OVDDraw, 4-4
  - OVRUn, 7-7
  - Template, 4-5, B-1
- Windows
  - Size, 3-8
- Work Area, 4-5
- Workstation Printer, 3-8, 4-18

# Z

Zoom, 4-26, 7-17