

HEWLETT-PACKARD

LaserJet Printer Family

**Using the
HP 92286R Presentations 1
Font Cartridge**



HP Computer Museum
www.hpmuseum.net

For research and education purposes only.

HP LaserJet Printer Family

**Using the HP 92286R
Presentations 1 Font Cartridge**



TABLE OF CONTENTS

INTRODUCTION	1
-------------------------------	----------

SECTION I The HP 92286R Fonts

Available Fonts with the HP 92286R	
Font Cartridge Installed	3
Font Characteristic Definitions	5

SECTION II Using Escape Sequences

What Are Escape Sequences?	6
Sending Escape Sequences.	8

SECTION III Using the HP 92286R Fonts

Introduction	9
Installing the Cartridge.	9
Font Selection	10
Returning the Printer to the Default Font.	12
Initial Font Selection	12
Using PCLine and Line Draw Characters.	15
Using Table C (Full Escape Sequences)	20
Printing Bullets	21
Making a PCLPak Cartridge File	22

TABLES

Table A	HP 92286R Font Characteristic Table	4
Table B	Initial Font Selection Table	13
Table C	HP 92286R Full Escape Sequence Table	20
Table D	USASCII Keystroke Equivalency Table	24

INTRODUCTION

The HP 92286R Presentations I font cartridge is designed for use with the Hewlett-Packard LaserJet family of printers (model number HP 2686). This cartridge contains 20 fonts which supplement the printer's resident fonts and are especially helpful for preparing presentations. The lower-case letters in the Presentation fonts are small capital letters which provide extra clarity for slides and displays. All of the fonts contained in this cartridge are non-proportional (fixed pitch).

Using the LaserJet printer, up to eight different fonts of one orientation can be printed per page (the number will vary for other printers in the LaserJet family).

By the time you finish reading these instructions, you will be familiar with the HP 92286R font cartridge, its installation, and the commands used to select any of its fonts.

SECTION I The HP 92286R Fonts

Read this section to familiarize yourself with the fonts available with the HP 92286R cartridge. A font characteristic table and font characteristic definitions are included here.

SECTION II Using Escape Sequences

Read this section for general information on using escape sequences. If you are not familiar with escape sequences, you will find it helpful to read this section before you get started. If you are already familiar with escape sequences, skip directly to Section III.

SECTION III Using the HP 92286R Fonts

In this section you have an opportunity to practice font selection using the fonts contained in the HP 92286R cartridge. Use Section III for instructions on installing the cartridge and using the font selection tables.

TABLES

Table A HP 92286R Font Characteristic Table

Table A lists the specific characteristics of each font in the HP 92286R font cartridge.

Table B Initial Font Selection (From the Default Font)

Table B lists the shortest escape sequences needed to change from the default font to any other font on the HP 92286R cartridge.

Table C HP 92286R Full Escape Sequence Table

Table C lists the full escape sequences used to select fonts from the HP 92286R cartridge. These are especially helpful when setting up software or programming.

Table D USASCII Keystroke Equivalency Table

The USASCII keystroke equivalency table identifies the USASCII, Legal, PCLine, and Line Draw characters contained in the HP 92286R cartridge.


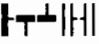
Please refer to your LaserJet Printer Owner's Reference Manual for additional font selection instructions and other escape sequence applications (or Operator's and Technical Reference Manuals depending on when your LaserJet printer was purchased).

SECTION I

THE HP 92286R FONTS

AVAILABLE FONTS WITH THE HP 92286R FONT CARTRIDGE INSTALLED

With the HP 92286R font cartridge installed, you can print with any of the fonts listed below. Orientation refers to the direction of print on the page - this is explained in more detail later in this section. Note that the lower-case letters in the Presentation fonts are actually small capital letters.

FONT	ORIENTATION
PRESENT.BOLD 18	Portrait or Landscape
PRESENT. BOLD 16	Portrait or Landscape
* PRESENT. BOLD 14 PT.	Portrait or Landscape
Letter Gothic 14 pt.	Portrait or Landscape
** PCLine 14 pt. Bold 	Portrait or Landscape
Line Draw 14 pt. 	Portrait or Landscape

* Default primary font

** Default secondary font

The characteristics which make up each font are listed on Table A below. If you are unfamiliar with font characteristics, read through the brief definitions on the following page or the more thorough description in your LaserJet Operator's Reference Manual.

**TABLE A
HP 92286R FONT CHARACTERISTIC TABLE**

Font Characteristics	Presentation 18-Bold	Presentation 16-Bold	Presentation * 14-bold
Orientation	Portrait/ Landscape	Portrait/ Landscape	Portrait/ Landscape
Symbol Set(s)	USASCII LEGAL	USASCII LEGAL	USASCII LEGAL
Spacing	Fixed	Fixed	Fixed
Pitch	6.5	8.1	10
Point Size	18	16	14
Style	Upright	Upright	Upright
Stroke Weight	Bold	Bold	Bold
Typeface	Presentation	Presentation	Presentation

Font Characteristics	Letter Gothic	* PCLine	Line Draw
Orientation	Portrait/ Landscape	Portrait/ Landscape	Portrait/ Landscape
Symbol Set	USASCII LEGAL	PCLINE	LINE DRAW
Spacing	Fixed	Fixed	Fixed
Pitch	10	10	10
Point Size	14	14	14
Style	Upright	Upright	Upright
Stroke Weight	Medium	Bold	Medium
Typeface	Letter Gothic	Line Printer	Line Printer

* With the HP 92286R font cartridge installed, the 14-point Presentation Bold font operates as the printer's default primary font and the PCLine font defaults as the secondary font. The 14-point Presentation Bold font is in use anytime the printer is reset or powered-on.

FONT CHARACTERISTIC DEFINITIONS

Fonts are sets of characters made up of combinations of these eight characteristics:

Orientation (portrait or landscape)

Symbol Set (Roman-8, USASCII, Legal, Line Draw, etc.)

Proportional spacing or fixed spacing (character spacing)

Print pitch (characters printed per horizontal inch)

Character height (point size)

Character style (upright or italic)

Stroke weight (light, medium, or bold)

Typeface (Courier, Presentation, Line Draw, etc.)

All font selection is done by priority. These font characteristics are listed in the order of priority that is used when sending escape sequences to select fonts for printing. The order of priority determines that one font will be selected instead of another because the printer "compares" the characteristic differences between fonts when an escape sequence command is received.

Remember that characteristics are set for each font and are not interchangeable between fonts. In other words, you cannot "mix and match" characteristics to create fonts different than the ones included in the HP 92286R cartridge. For more information concerning font characteristics, consult the Operator's Reference Manual for your printer.

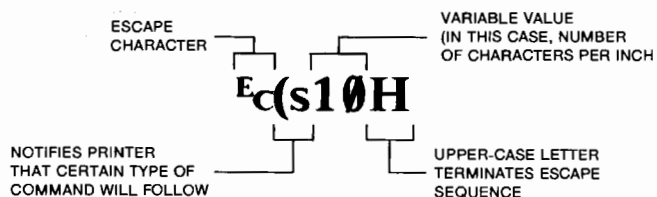
SECTION II

USING ESCAPE SEQUENCES

WHAT ARE ESCAPE SEQUENCES?

Escape sequences are commands that you send to the printer to tell it what tasks to perform. They can be typed in as part of a text file, included when programming, embedded in your software's initialization program or added in a stand-alone program. When the printer receives an escape sequence, it first decodes the command and then executes it. The printer continues printing as the escape sequence instructs until you send another command. For example, if you send an escape sequence that tells the printer to change orientation from portrait to landscape, it prints in landscape orientation until it is reset or instructed to print in portrait orientation.

An escape sequence looks like this:



The escape character (**E_c**) is always the first character in an escape sequence. It is followed by one or more characters which tell the printer what task you want it to perform, such as selecting a particular font for printing. Some escape sequences allow you to enter a variable which represents a quantity or value (in the example above, we specified 10 as the number of characters per inch). Escape sequences are always terminated with an upper-case letter ("H" in the example above). When the printer receives an

upper-case letter following the escape sequence, it recognizes that character as the end of the sequence. All letters within an escape sequence (between the ^c and the final upper-case letter) must always be lower-case.

To save keystrokes, several escape sequences can be combined and sent to the printer as one string. The following example shows two escape sequences that can be entered separately or combined and sent to the printer as one string:

^c(s10H and ^c(s0S
or
 ^c(s10h0S

Many of the escape sequences presented in this booklet are combined for convenience. The LaserJet Printer Owner's Reference Manual gives instructions for combining escape sequences and lists all of the sequences that can be used with the LaserJet printer. For a more detailed explanation of escape sequences, consult your LaserJet Owner's Reference Manual (or Operator's and Technical Reference Manuals depending on when your LaserJet printer was purchased).



SENDING ESCAPE SEQUENCES

There are several ways to send escape sequences to your LaserJet printer. By typing them directly into your text or program, or using them with your software package, you are able to send instructions to the printer. The way in which you will send the escape character "ESC" depends on the type of computer system and keyboard you have or what software or programming language you are using.

- Some terminals have a CTRL or CNTL (CONTROL) key which can be used in combination with the left bracket ([) to send an escape character (simply press the CTRL key and hold it down while pressing the [key).
- Other computer systems require you to send a number:

027 (the decimal equivalent of the escape key) or,

1B (the hexadecimal equivalent of the escape key).

Using these methods, the escape character "ESC" will not appear on your screen. Instead, a different character may appear depending on which method your system uses to recognize escape characters.

A few software packages do not allow you to send escape sequences. Consult your software manual for information about using escape sequences with your software package. If you cannot locate the information you need, ask your computer dealer or software supplier to provide it.

SECTION III

USING THE HP 92286R FONTS

INTRODUCTION

In this section you will learn to select fonts from the HP 92286R cartridge. To assist you in selecting the appropriate escape sequence, font selection tables and examples are provided as well as special instructions for using the Line Draw font.

INSTALLING THE CARTRIDGE

Follow these instructions to install the HP 92286R cartridge in order to print with any of the fonts it contains:

1. Press the **ON-LINE** key to set the printer off-line (light off).
2. With the label facing up, insert the cartridge into the slot in the upper right corner of the printer. **BE SURE THAT THE CARTRIDGE IS FIRMLY SEATED IN THE SLOT.**
3. Press the **ON-LINE** key to set the printer on-line (light on).
4. The 14-point portrait Presentation Bold font (cartridge default) is now active. Inserting the 92286R font cartridge automatically selects the 14-point portrait Presentation Bold font as the primary font and the portrait PCLine font as the secondary font. (With the IBM PC and compatibles, PCLine characters are accessed as you would normally access them.) To select a primary or secondary font other than these, the appropriate escape sequence must be sent to the printer. Note

that when you select a primary or secondary font other than the default, the selected font becomes the primary or secondary font respectively. For example, if you are printing in the default primary font and then specify a new primary font, you will then be printing with the newly-selected font.

5. To remove the font cartridge, press the **ON-LINE** key to set the printer off-line (light off). Grasp the edges of the cartridge and slowly pull it out of the slot. Press the **ON-LINE** key to set the printer on-line.

FONT SELECTION

Before you start, read the following information carefully:

- Make sure your HP 92286R font cartridge is firmly seated in the slot (the printer should be **OFF-LINE** before installing the cartridge).
- When your printer is powered-up or reset with the 92286R cartridge installed, the 14-point portrait Presentation Bold font is active (default).
- The HP 92286R Font Characteristic Table on page 4 lists each font with its specific characteristics. Characteristics are fixed for each font and are not interchangeable between fonts.
- When selecting fonts, keep in mind that the printer "remembers" the font characteristics last specified. When selecting a new font, the differences between the characteristics last specified and those of the desired font are compared.
- The LaserJet printer prints a maximum of eight fonts of one orientation per page. The maximum number of fonts you can print on a page varies depending on the printer you have. For example, LaserJet PLUS printers print a maximum of 16 fonts per page.

- Some fonts are available in portrait orientation (text printed across the width of the page, like a letter), and others in landscape orientation (text printed across the length of the page). Both portrait and landscape orientation cannot be printed on the same page. When changing from one orientation to another, the page you are currently printing on will be ejected. The escape sequence $\text{E}_c\&\ell\theta\theta$ selects portrait orientation and $\text{E}_c\&\ell1\theta$ selects landscape orientation. *



Portrait
 $\text{E}_c\&\ell\theta\theta$



Landscape
 $\text{E}_c\&\ell1\theta$

- * Unless you are switching from one orientation to another, you do not need to send the orientation escape sequences. Sending either escape sequence returns the page length, top margin, text length, left and right margins, horizontal motion index (HMI), and vertical motion index (VMI) to their default settings.

- Since differences between some characters can be confusing, take a moment to compare the characters shown below before using escape sequences:

Lower case L = ℓ
Number one = **1**

Upper case O = **O**
Number 0 = θ

Portrait = $\text{E}_c\&\ell\theta\theta$
Landscape = $\text{E}_c\&\ell1\theta$

Roman-8 = $\text{E}_c(8U$
Roman Extension = $\text{E}_c(\theta E$

RETURNING THE PRINTER TO THE DEFAULT FONT

- If you cannot determine which font you are currently printing with, reset your printer to the default font using one of the following escape sequences:

Enter E^cE , or

Enter $\text{E}^c\&\text{00}\text{E}^c(\text{0U}\text{E}^c(\text{s0p10h14v0s3b11T}$

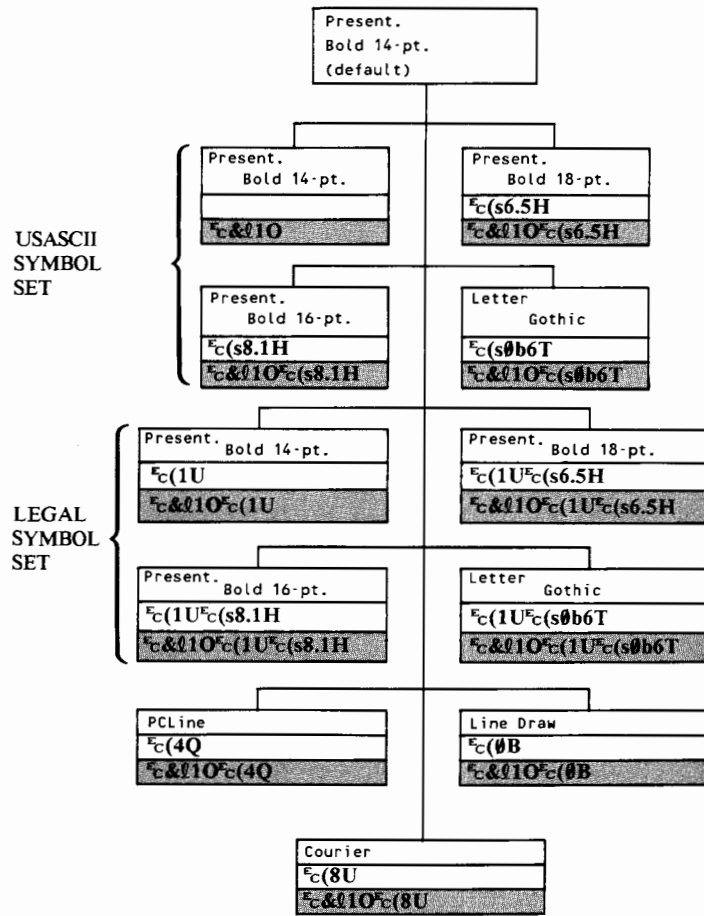
NOTE

Entering the reset command (E^cE) causes any page formatting escape sequences previously sent to the printer (margins, orientations, etc.) to return to their default settings. Resetting the printer or sending the long escape sequence above will affect the HMI (Horizontal Motion Index) if set at other than 10 characters per inch, and may affect the margins and orientation. (Refer to your LaserJet Owner's Reference Manual for more information on formatting commands or the HMI.)

INITIAL FONT SELECTION

Use the following table to select any font in the HP 92286R cartridge from the printer's default font (Presentation Bold, 14-point). This table lists the shortest escape sequence necessary to select any font in the HP 92286R cartridge from the default font (the cartridge must be installed).

TABLE B
*** Initial Font Selection (From the Default Font)**



* The non-shaded escape sequences are used to select the portrait fonts and the shaded escape sequences are used to select landscape fonts.

EXAMPLE:

To switch from 14-point Presentation Bold (the default primary font) to 14-point Letter Gothic using the USASCII symbol set in the portrait orientation, enter the following escape sequence:

Switching From: Presentation Bold, 14-point (default)

To: Letter Gothic, 14-point

Enter: `ESC(s0b6T The LASERJET Printer`

and the following will be printed:

The LASERJET Printer

Notice that the orientation and symbol set escape sequences were not used because we did not desire to change either orientation or symbol set.

USING PCLINE AND LINE DRAW CHARACTERS

The HP 92286R PCLine and Line Draw fonts make it possible to draw a variety of vertical and horizontal lines by converting USASCII keystrokes into Line Draw characters (use Table D, on page 24). The PCLine font corresponds to the IBM-8 line drawing characters and the Line Draw font corresponds to the line drawing characters used on Hewlett-Packard terminals and the HP 150.

Some of the more common uses for these line drawing characters are creating simple lined forms and boxes, borders and charts.

Before you start, read the following information carefully:

- The PCLine and Line Draw fonts will connect vertical symbols at 6 lines per inch (the default line spacing).
- To select the PCLine font from any other font on this cartridge, enter the following escape sequence:

`Esc(4Q` (If you are changing orientations, precede this escape sequence with either `Esc&l00` for portrait or `Esc&l10` for landscape.)

- To select the Line Draw font from any other font on this cartridge, enter the following escape sequence:

`Esc(0B` (If you are changing orientations, precede this escape sequence with either `Esc&l00` for portrait or `Esc&l10` for landscape.)

- When switching from the PCLine or Line Draw font to another font, the printer "remembers" the font characteristics last specified. Make a note of your previous selection and use the Font Selection Tables to make a new selection (a **new symbol set must always be entered to cancel out the PCLine or Line Draw symbol set**).
- The PCLine and Line Draw fonts are both 10-pitch, 14-point fonts and occupy 6 lines/inch vertically. When using the default font or the Letter Gothic font in this cartridge (both of which are also 10-pitch, 14-point fonts and 6 lines/inch), the space

occupied by each character, including the line characters, is the same.

When using the PCLine or Line Draw fonts with the 18-point or 16-point Presentation fonts, the 18- and 16-point characters are larger than the line characters. When using fonts other than 10-pitch, 14-point with the PCLine or Line Draw fonts, draw the lines and text separately. (The third example below shows how this is done.)

- Since the default primary font is 14-point Presentation Bold and the default secondary font is PCLine, a printer reset allows you to print PCLine characters as you normally would with your IBM PC or PC-compatible computer. (Using the HP 150 following a printer reset, you would select Line Draw as the secondary font [E_c)0B]--then you could use a Shift Out [CTRL N] to access Line Draw and a Shift In [CTRL O] to access the 14-point Presentation Bold font [see Table D for ASCII Line Draw keystrokes].)

Since there are several ways you may print line draw characters using the 92286R font cartridge, three different ways are illustrated in the examples below.

EXAMPLE (for the IBM PC):

If you are using an IBM PC or PC-compatible computer, reset the printer by sending an E_cE command. Resetting the printer defaults the 14-point Presentation Bold font as the primary font and the PCLine font as the secondary font. This enables you to draw line characters as you normally would (by pressing and holding the ALT key and then typing the decimal ASCII value-- for example, ALT 205 prints a double horizontal line character). The text and line draw characters you see on your display screen will be printed as you see them on the screen. For example, to print the word LaserJet surrounded by a double line, you would type the following (hold the ALT key while typing the number and then release the ALT key):

```
ALT ALT ALT ALT ALT ALT ALT ALT ALT ALT
201 205 205 205 205 205 205 205 205 187 and press RETURN
ALT ALT
186 L a s e r J e t 186 and press RETURN
```



EXAMPLE (Using the HP 150):

This example illustrates how to draw a box around a table using the Line Draw font as the secondary font. Shift Out (^o) is used to access the secondary font and Shift In (^s) is used to access the primary font. Since the default secondary font is PCLine, an escape sequence must be sent to the printer to select Line Draw as the secondary font.

Follow these steps to print the sample below:

1. Reset the printer using an ^cE command. This sets the primary font to 14-point Presentation Bold and the secondary font to PCLine.
2. Send the ^c)OB escape sequence to the printer to select Line Draw as the secondary font. Now you can access Line Draw by sending a Shift Out (^o) to the printer. If your HP 150 has the HP Line Draw font selected as its secondary font, the line draw characters will be displayed on the display screen.
3. Enter this information:

```
 $\text{^o}Q$ ;;;;;;;;;;;;;W  
 $\text{^s}$       COLOR SLIDE FILM       $\text{^o}$ :  
1;;;;;;;;;3;;;;;;;;;2  
 $\text{^s}$   ISO   $\text{^o}$ : $\text{^s}$   APPLICATION   $\text{^o}$ :  
1;;;;;;;;;0;;;;;;;;;2  
 $\text{^s}$   25   $\text{^o}$ : $\text{^s}$  Slow, Best Quality  $\text{^o}$ :  
 $\text{^s}$   64   $\text{^o}$ : $\text{^s}$  Slow, High Quality  $\text{^o}$ :  
 $\text{^s}$   200  $\text{^o}$ : $\text{^s}$  Medium Speed       $\text{^o}$ :  
 $\text{^s}$   400  $\text{^o}$ : $\text{^s}$  High Speed        $\text{^o}$ :  
A;;;;;;;;;4:::::::::::::S $\text{^s}$ 
```


4. Print (refer to your computer or software manual for "PRINT" command).

... and you get this:

COLOR SLIDE FILM	
ISO	APPLICATION
25	SLOW, BEST QUALITY
64	SLOW, HIGH QUALITY
200	MEDIUM SPEED
400	HIGH SPEED

EXAMPLE (General Method):

This example involves drawing a box similar to the one above and illustrates another way to use the PCLine font.

1. Reset the printer using an E_cE command. This sets the primary font to 14-point Presentation Bold and the secondary font to PCLine.
2. Enter this information:

```
          COLOR SLIDE FILM

ISO      APPLICATION

25      SLOW, BEST QUALITY
64      SLOW, HIGH QUALITY
200     MEDIUM SPEED
400     HIGH SPEED
```

$\text{E}_c(4\text{Q}_c\&a-10\text{R}$ (select PCLine and move up 10 rows)


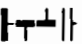
USING TABLE C

Table C lists the complete escape sequences used to select each font on the HP 92286R cartridge. It is recommended that full escape sequences be used when developing software to ensure font selection. Refer to your LaserJet Operator's Reference Manual for more complete information concerning font selection.

- If you are changing from one orientation to another, you must precede the escape sequence listed below with the orientation escape sequence ($\text{E}_c\&\text{Q}10$ for landscape or $\text{E}_c\&\text{Q}00$ for portrait). For example, to switch from the portrait Letter Gothic font to the landscape Line Draw font, you would send the $\text{E}_c\&\text{Q}10\text{E}_c(\text{0B}\text{E}_c(\text{s0p10h14v0s0b0T}$ escape sequence.
- A blank space in an escape sequence, $\text{E}_c(____)$, indicates that you must enter one of the symbol sets listed below table C.

TABLE C

HP 92286R Full Escape Sequence Table

PRESENT.BOLD 18	$\text{E}_c(____ \text{E}_c(\text{s0p6.5h18v0s3b11T}$
PRESENT. BOLD 16	$\text{E}_c(____ \text{E}_c(\text{s0p8.1h16v0s3b11T}$
PRESENT. BOLD 14 PT.	$\text{E}_c(____ \text{E}_c(\text{s0p10h14v0s3b11T}$
Letter Gothic 14 pt.	$\text{E}_c(____ \text{E}_c(\text{s0p10h14v0s0b6T}$
PCLine 14-Pt. 	$\text{E}_c(4\text{Q}\text{E}_c(\text{s0p10h14v0s3b0T}$
Line Draw 14-Pt. 	$\text{E}_c(\text{0B}\text{E}_c(\text{s0p10h14v0s0b0T}$

*Enter ONE of these: 0U--USASCII
1U--Legal

PRINTING BULLETS

Bullets are frequently used in presentations to highlight a list of items. The 92286R font cartridge provides several options for bulleting items. The asterisk (*) and the dagger in the Presentation fonts may be used for bulleting items and two bullet characters are also provided in the PCLine font (see USASCII characters "y" and "z" in table D).

EXAMPLE (using the IBM PC):

Following a printer reset (⌘E), these three items were bulletted by pressing and holding the ALT key while typing 249 (250 may be used to print a smaller bullet).

- APPLES
- ORANGES
- PEARS



EXAMPLE (using the HP 150):

Following a printer reset (⌘E), the bulleted printout above could also be created with the HP 150 by first using a Shift Out (CTRL N) to select the PCLine font (default secondary font) and then typing a "y" character to print the bullet. A Shift In (CTRL O) was then used to select the 14-point Presentation Bold font (default primary font) for printing the text.

MAKING A PCLPAK CARTRIDGE FILE

If you are using Hewlett-Packard's PCLPak software utility, a font cartridge file will enable you to easily select the fonts on this cartridge.

If you do not have a PCLPak font cartridge file for this cartridge (92286R) and you wish to create one, enter the following data using any editor you wish. Be sure to type the data exactly as shown here--spaces are important, as well as upper- and lower-case letters. Also note the differences between the number zero(0) and the upper-case letter O (O).

Enter the following data:

92286R Presentations

PCLPak A.00.01

F92286R.CTG

*

P Gothic 14pt 10cpi Usasc
P Gothic 14pt 10cpi Legal
P Present Bold 14pt 10cpi Usasc
P Present Bold 14pt 10cpi Legal
P Present Bold 16pt 8.1cpi Usasc
P Present Bold 16pt 8.1cpi Legal
P Present Bold 18pt 6.5cpi Usasc
P Present Bold 18pt 6.5cpi Legal
P PCLine 14pt 10cpi
L Gothic 14pt 10cpi Usasc
L Gothic 14pt 10cpi Legal
L Present Bold 14pt 10cpi Usasc
L Present Bold 14pt 10cpi Legal
L Present Bold 16pt 8.1cpi Usasc
L Present Bold 16pt 8.1cpi Legal
L Present Bold 18pt 6.5cpi Usasc
L Present Bold 18pt 6.5cpi Legal
L PCLine 14pt 10cpi

*

Goth 14pt UsA
Goth 14pt Leg
Pres B 14pt UsA
Pres B 14pt Leg
Pres B 16pt UsA

LaserJet Font HP 92286R

Page 22

Pres B 16pt Leg
Pres B 18pt UsA
Pres B 18pt Leg
PCLLine 14pt
Goth 14pt UsA
Goth 14pt Leg
Pres B 14pt UsA
Pres B 14pt Leg
Pres B 16pt UsA
Pres B 16pt Leg
Pres B 18pt UsA
Pres B 18pt Leg
PCLLine 14pt

*

ØU sØplØh14vØsØb6T
1U sØplØh14vØsØb6T
ØU sØplØh14vØs3b6T
1U sØplØh14vØs3b6T
ØU sØp8.1h16vØs3b6T
1U sØp8.1h16vØs3b6T
ØU sØp6.5h18vØs3b6T
1U sØp6.5h18vØs3b6T
4Q sØplØh14vØs3bØT
ØU sØplØh14vØsØb6T
1U sØplØh14vØsØb6T
ØU sØplØh14vØs3b6T
1U sØplØh14vØs3b6T
ØU sØp8.1h16vØs3b6T
1U sØp8.1h16vØs3b6T
ØU sØp6.5h18vØs3b6T
1U sØp6.5h18vØs3b6T
4Q sØplØh14vØs3bØT

When you have entered this data exactly as shown above, save the file as F92286R.CTG on the same disk (and subdirectory) as the PCLPak program files. Once the file has been saved, you may select any of the HP 92286R fonts using PCLPak.

**TABLE D
USASCII KEYSTROKE EQUIVALENCY TABLE**

Keystroke	!	"	#	\$	%	&	'	()	*	+	,	
USASCII (0U)	!	"	#	\$	%	&	'	()	*	+	,	
Legal (1U)	!	"	#	\$	%	&	'	()	*	+	,	
PCLine (4Q)													
Line Draw (0B)	†	‡	§	¶			¶	±		†	‡	-	
Decimal Value	32	33	34	35	36	37	38	39	40	41	42	43	44

Keystroke	-	.	/	0	1	2	3	4	5	6	7	8	9
USASCII (0U)	-	.	/	0	1	2	3	4	5	6	7	8	9
Legal (1U)	-	.	/	0	1	2	3	4	5	6	7	8	9
PCLine (4Q)													
Line Draw (0B)	⌊		+	†	‡	†	†	†	†	†	†	†	=
Decimal Value	45	46	47	48	49	50	51	52	53	54	55	56	57

Keystroke	:	<	=	>	?	@	A	B	C	D	E	F	
USASCII (ØU)	:	<	=	>	?	@	A	B	C	D	E	F	
Legal (1U)	:	=	¢	¢	¢	¢	A	B	C	D	E	F	
PCLine (4Q)		¶	¶	¶	¶	¶	L	T	T	T	T	T	
Line Draw (ØB)		-	#	#	#	#	L	#	#	#	#	L	
Decimal Value	58	59	60	61	62	63	64	65	66	67	68	69	70

Keystroke	G	H	I	J	K	L	M	N	O	P	Q	R	S
USASCII (ØU)	G	H	I	J	K	L	M	N	O	P	Q	R	S
Legal (1U)	G	H	I	J	K	L	M	N	O	P	Q	R	S
PCLine (4Q)		¶	¶	¶	¶	¶	¶	¶	¶	¶	¶	¶	¶
Line Draw (ØB)	J	~]	~	~	~	~	~	~	~	~	~	J
Decimal Value	71	72	73	74	75	76	77	78	79	80	81	82	83

Keystroke	T	U	V	W	X	Y	Z	[\]	^	_	'
USASCII (ØU)	T	U	V	W	X	Y	Z	[\]	^	_	'
Legal (1U)	T	U	V	W	X	Y	Z	[⊙]	⊙	_	°
PCLine (4Q)	£	F	π	#	†	J	Γ	■	■	■	■	■	■
Line Draw (ØB)	γ	†	†	■	†	†	†	†	†	†	†	†	†
Decimal Value	84	85	86	87	88	89	90	91	92	93	94	95	96

Keystroke	a	b	c	d	e	f	g	h	i	j	k	l	m
USASCII (ØU)	A	B	C	D	E	F	G	H	I	J	K	L	M
Legal (1U)	A	B	C	D	E	F	G	H	I	J	K	L	M
PCLine (4Q)													
Line Draw (ØB)	†	†	■	■	■	■	†	†	†	†	†	†	†
Decimal Value	97	98	99	100	101	102	103	104	105	106	107	108	109

Keystroke	n o p q r s t u v w x y z
USASCII (0U)	N O P Q R S T U V W X Y Z
Legal (1U)	N O P Q R S T U V W X Y Z
PCLine (4Q)	
Line Draw (0B)	† ‡ § ¶ · ¸ 9 † ‡ § ¶ · ¸ 9
Decimal Value	110 111 112 113 114 115 116 117 118 119 120 121 122

Keystroke	() ~ * † ‡ § ¶ · ¸ 9
USASCII (0U)	{ } ~ * † ‡ § ¶ · ¸ 9
Legal (1U)	{ } ~ * † ‡ § ¶ · ¸ 9
PCLine (4Q)	
Line Draw (0B)	† ‡ § ¶ · ¸ 9
Decimal Value	123 124 125 126 127

