

The AdvanceLink Family

Data Sheet

The AdvanceLink family of terminal emulation and file transfer solutions provides full integration of your personal computer into your workgroup. Whether you are using an HP Vectra, IBM[®] compatible PC or an Apple[®] Macintosh[®], Hewlett-Packard has the connectivity solution to meet your needs.

The AdvanceLink family now supports three of today's popular personal computing environments.

AdvanceLink for MS-DOS is a comprehensive data communications package which incorporates alphanumeric, monochrome and color graphics terminal emulation, in addition to state-of-the-art file transfer and an extensive command language that allows task automation.

AdvanceLink for Windows emulates the HP 2392 block mode terminal. It provides alphanumeric terminal capabilities under Microsoft[®] Windows[®] and HP's NewWave, together with file transfer and basic scripting capabilities.

AdvanceLink for the Macintosh[®] offers three choices of terminal emulation for the Apple Macintosh. AdvanceLink/Text for HP 2392 alphanumeric,



AdvanceLink/Graphics for HP 2393 monochrome graphics and AdvanceLink/Color Graphics for HP 2397 color graphics terminal emulation. All versions offer file transfer.

Stepping stone to the future

Hewlett-Packard is committed to the future development of terminal emulation solutions. Future releases will incorporate expanded terminal emulation and task automation capabilities.

Our goal is to extend the next generation AdvanceLink family to additional graphical environments, in particular HP NewWave and OS/2[®] Presentation Manager[®]. As the AdvanceLink family evolves, users will find the power at their fingertips to access information on their networks from their industry standard workstations of choice, whatever environment they operate in.

The AdvanceLink family enables you to increase your productivity with the hardware you have now – and protect your investment in software and training as you move to powerful new environments.

HP Computer Museum
www.hpmuseum.net

For research and education purposes only.

AdvanceLink for MS-DOS

Features

- Terminals emulated
 - HP 2392A, HP 2393A, HP 2627A including ANSI mode
- Full block/line mode terminal emulation
- HP screen display features
 - 26-line by 80-column display
 - Vertical scrolling
 - Horizontal scrolling
 - Underline or block cursor
 - Supports all alternate character sets
 - HP terminal display enhancements: Inverse, Underline, Half-bright, Blink Security enhancement (non-display), Bold and box
 - Display functions for visible control characters
- HP function key emulation
 - Loadable values and two-line on-screen labels
 - Provides all standard HP System keys: Device Control keys, Margin/Tab/Column keys, Modes keys, User keys, Configuration keys
 - Programmable function keys
- Network compatibility
 - Direct RS-232-C or RS422 connection (COM1, COM2, Com3 and COM4), depending on the interface card
 - HP OfficeShare
 - Remote modem connection via internal or external modem
 - X.25 network via PAD
 - PBX switches and dial back security systems
 - Eicon/X.25 network adapter card support for standalone and NetBIOS compatible LANs (inc. HP OfficeShare and Novell)
- Fast and reliable file transfer
 - PC-to-PC/host
 - HP 3000 data compression
 - Labelled file transfer (up to 2000 bytes) with the HP 3000
 - Network transparency mode for efficient X.25 file transfers
 - XMODEM (for HP 9000 or DEC VAX file transfers)
 - Comprehensive PC backup with HP 3000 data compression
- Better-than-terminal features
 - Intelligent type ahead
 - Horizontal scroll up to 160 columns
 - Forms cache to disk
 - Copy to disk to copy the screen contents to any MS-DOS file
 - Read disk to display the contents of an MS-DOS file
 - Color text (EGA/VGA screens)
- Extensive command language offers the power to automate your communication tasks
 - Compatible with earlier versions of AdvanceLink
 - Over 80 commands
 - Command file encryption
 - Program execution control
 - Access to MS-DOS applications via “hot key”
- Integration with HP NewWave
 - Enhanced encapsulation offers iconic representation of AdvanceLink and its command files
- Powerful logging
 - Log to: directly connected printer or disk file
 - Automatic spooling of output logged to printer
 - Log lines off top or bottom
 - Log current line, page display memory, all text, selected text

Hardware requirements

Host System: HP 3000, HP 9000, HP 1000RTE, or HP 260

Computer: HP Vectra PC, IBM PC XT/AT or compatible, IBM PS/2.

Disk Drive: One high density (at least 720Kb) and one low density flexible disk drive or one flexible disk drive and a hard disk drive.

Memory: minimum memory requirement (including MS-DOS 3.3) in alphanumeric mode is 270Kb and in graphics mode is 430Kb.

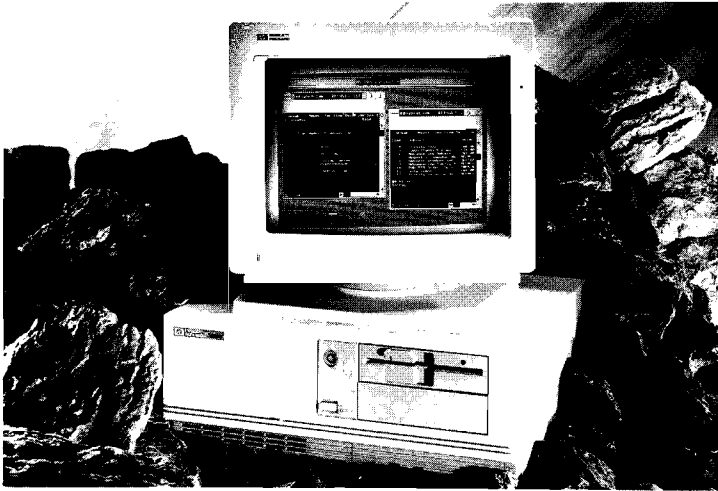
Monitor: An EGA or VGA video adapter (with a minimum of 128Kb RAM) with color monitor is required for color graphics and text.

Software requirements

Operating System: MS-DOS 2.1 or 3.x. MS-DOS 3.x or later is required for MS-DOS program execution from AdvanceLink.

Networking: HP OfficeShare provides terminal access over the network to HP 3000, HP 9000, HP 1000RTE and DEC VAX computers. AdvanceNet is used to connect to the HP 3000. Terminal access from PC to HP 9000, HP 1000RTE and DEC VAX computers requires the TELNET service on the minicomputer.

AdvanceLink for Windows



AdvanceLink/Text Features

Full HP 2392 block/line mode terminal emulation with full HP screen display features, HP function key emulation and HP-like user configuration.

- Network compatibility
 - Direct RS-232-C or RS422 connection (COM1 or COM2)
 - Hayes compatible modem
 - Automatic dial-up, tone or pulse
 - Baud rates from 300 to 19,200
 - HP OfficeShare
 - HP LAN Manager
 - Multiple simultaneous sessions via serial or LAN connection
 - Recognizes all HP escape sequences
 - X.25 network
 - Eicon/X.25 network adapter card support for standalone and NetBIOS compatible LANs
- Windowing convenience features
 - Mouse, menu and keyboard cursor positioning
 - Pause button to stop/start scrolling
 - On-screen control bar: toggle between “editing” keys, ruler, buttons for easy entry of control characters
- Pull-down menus
- Move/resize the windows
- Cut, Copy and Paste via Clipboard
- Pass text from/into other applications via Clipboard
- Concurrent processing with other applications
- Powerful logging
 - Log to: directly connected printer, Clipboard, disk file
 - Automatic spooling of output logged to printer
 - Log lines off top or bottom
 - Log current line, page display memory, all text, selected text
- Intelligent typehead
 - Stores characters typed if host is not ready to receive
 - When host prompt received, next command is transmitted
 - Typehead automatically disabled when initiating network communications
- Fast and reliable background file transfer between PC and HP host systems (HP 3000, HP 9000, HP 1000). Format conversion options include:
 - HP and PC text format conversion (word wrap or retain lines)

- Binary transfer
- Archive HP file to PC
- Fast throughput
- XMODEM support
- Support for 7-bit and sensitive networks for file transfer
- Automatic character conversion for HP Roman8 and ANSI/Macintosh international characters
- Data compression

- Command scripts allow automation of certain tasks
- Integration with HP NewWave
 - Enhanced encapsulation offers iconic representation of AdvanceLink and its command files

Hardware requirements

Host System: HP 3000, HP 9000, HP 1000

Computer: HP Vectra, IBM PC/AT or compatible, IBM PS/2, COMPAQ DESKPRO 386

Disk Drive: One high density (at least 720Kb) and one low density flexible disk drive, or one flexible disk drive and one hard disk drive.

Memory: minimum memory requirement is 80K (plus Microsoft Windows requirement).

Monitor: Any MS-Windows supported monitor and video adapter.

Software requirements

MS-DOS 2.1 or 3.x and MS-Windows/286 or MS-Windows/386 version 2.0, 2.1, 2.11 or 3.0.

AdvanceLink for the Macintosh

AdvanceLink/Text Features

The features are similar to those of AdvanceLink for Windows, with the following exceptions:

HP OfficeShare connection to HP 9000
Command script facility
Support for Eicon card
NewWave encapsulation
Multiple session capability

In addition, the following features are included:

- HP screen display
 - 18-, 132- and 160- column
- HP function key emulation
 - Press function keys by:
 - clicking on screen label,
 - pressing F1-F8 (F1-F10 on an extended Macintosh keyboard),
 - selecting keys menu item
- HP keyboard features
 - Enter, control, clear line/display,
 - Control, Esc, F1-F10, Home, End, Page Up, Page Down, Ins, Delete and Pause on extended keyboards
 - Supports numeric keypad and arrow keys
 - Supports all HP/Macintosh international keyboards
 - Supports 8-bit characters (HP Roman8)
 - Automatic keyboard lock for X.25 communications
- Fast and reliable background file transfer
 - Supports MacBinary for transfer with online services



- Network compatibility
 - Kinetics Etherport II card
 - Apple Ethertalk Interface card
 - Baud rates from 300 to 57600
 - Supports ImageWriter, LaserWriter and AppleTalk ImageWriter from Apple
 - Supports PaintWriter, DeskJet, DeskWriter and LaserJet from HP
- Multiple windowing modes
 - Text/Graphics displayed in a single window
 - Text/Graphics displayed in separate windows
 - Graphics window can be opened, moved, closed
 - Resize graphics window from 200x100 pixels to size of monitor
- Graphics scaling
 - Scale graphic to fit in window, match text, or fit in largest area of window which is proportional to area of HP terminal screen
 - Display graphic unscaled for full-size viewing
 - Scroll unscaled images

AdvanceLink/Graphics Features

AdvanceLink/Graphics provides emulation of the HP 2393 monochrome graphics terminal. It supports all of the capabilities offered by AdvanceLink/Text, and adds the following functionality:



- HP graphics resolution support
 - HP 2392 low res. 512x390 pixels
 - HP 2393 high res. 640x400 pixels
 - HP 2623 res. 512x390 pixels
 - HP 264X 720x360 pixels
- Enhanced graphics input capabilities
 - Mouse support
 - HP-like graphics cursor
 - Shift + arrow key for 5x faster cursor movement
 - Pixel counters on screen
 - HP drawing mode support
 - Emulates Move, Draw and Clear functions of HP graphics keypad
 - HP line type/area fill emulation
 - 38 additional Macintosh area fill patterns
- Graphics output options
 - Connection of HP plotter in eavesdrop mode
 - PrintScreen to Apple Talk

AdvanceLink/Color Graphics

Features

AdvanceLink/Color Graphics provides emulation of the popular HP 2397 color graphics terminal. It supports all of the capabilities offered by AdvanceLink/Text and AdvanceLink/Graphics, and adds the following:

- Full color display
 - Color text
 - Color graphics
 - Color display enhancements
 - Color function key labels
 - Runs on all Macintosh monitors (monochrome and color)
- Color graphics capabilities
 - Up to 16 color palettes (1 system, 15 user defined)
 - Dithered area fill patterns for more colors
 - Supports all HP color pens
 - Program defined color palettes and color pairs using escape sequences
 - Dialog box for color pairs and system color selection

Hardware requirements

Host Computer: HP 3000, HP 9000, HP 1000

Computer: 512k Mac, Mac Plus, MacXL, MacSE range and MacII range.

Disk Drive: One high density (at least 720Kb) and one low density flexible disk drive, or one flexible disk drive and one hard disk drive.

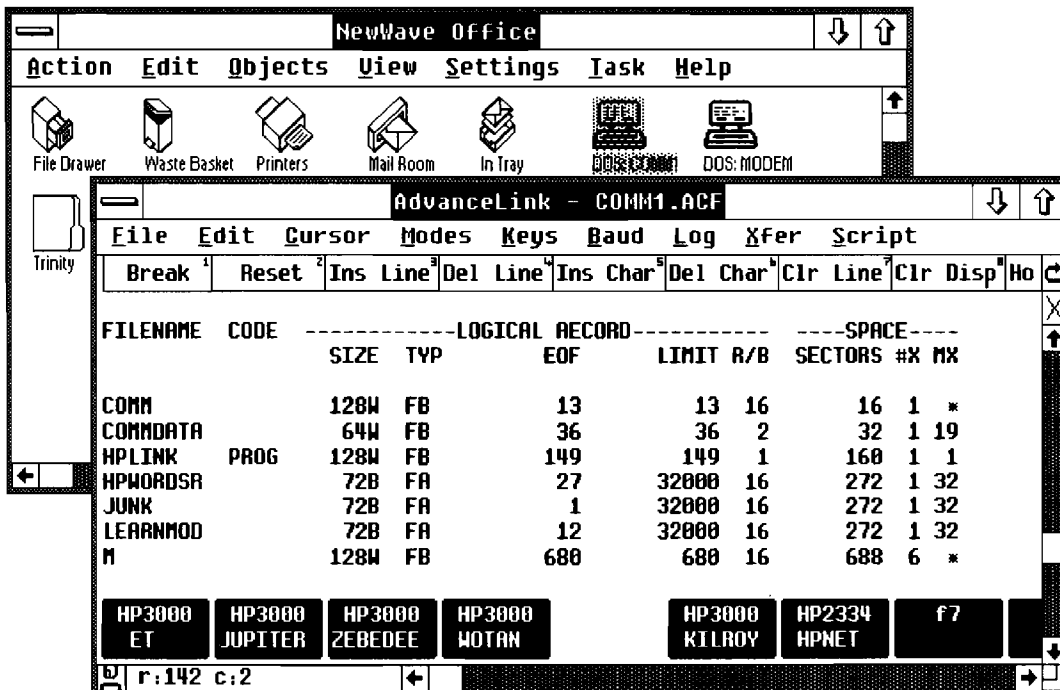
Memory: minimum memory requirements are
 AdvanceLink/Text 200K
 AdvanceLink/Graphics 500K
 AdvanceLink/Color Graphics 750K

Monitor: any monitor which can connect to the Apple Macintosh computers listed (see "Computer" above).

Software requirements

System 6.0, Finder 6.1 and Multi-Finder (optional)

AdvanceLink for Windows running under NewWave



Ordering Information

To order the following products, contact your HP Sales Representative.

AdvanceLink for MS-DOS

68333B AdvanceLink, single copy IBM PC format, 5.25" and 3.5" disks.
68333J AdvanceLink ten user site license certificate.

AdvanceLink for Windows

D2104A AdvanceLink/Text, single copy IBM PC format (5.25" and 3.5" disks)
D2114A AdvanceLink/Text, user license certificate

AdvanceLink for the Macintosh

D2105A AdvanceLink/Text, single copy Apple Macintosh format
D2115A AdvanceLink/Text, user license certificate

D2106A AdvanceLink/Graphics, single copy Apple Macintosh format
D2116A AdvanceLink/Graphics, user license certificate

D2107A AdvanceLink/Color Graphics, single copy Apple Macintosh format
D2117A AdvanceLink/Color Graphics, user license certificate

Documentation

68333K AdvanceLink for MS-DOS, one set of documentation
D2124A AdvanceLink for Windows, one set of documentation
D2125A AdvanceLink for the Macintosh, one set of documentation

Trade-in Programs

If you are currently using AdvanceLink for MS-DOS (P/N 68333F) you can trade in your software to AdvanceLink for Windows by returning the AdvanceLink master disk.

D2104-60001 Single copy trade-in from any previous version of AdvanceLink for MS-DOS (P/N 68333F) to AdvanceLink for Windows (P/N D2104A), IBM PC format
D2104-60002 single copy update from any previous version of AdvanceLink for Windows to the current version.

Upgrade Programs

If you are using AdvanceLink/Text or AdvanceLink/Graphics on your Apple Macintosh, you can upgrade your software to AdvanceLink/Color Graphics on return of your master disks.

D2107-60001 Single copy upgrade from any previous version of AdvanceLink/Text (P/N D2105A) or AdvanceLink/Graphics (P/N D2106A) for the Macintosh to AdvanceLink/Color Graphics (P/N D2107A), Apple Macintosh format.

Single copy trade-ins and upgrades can be ordered in the United States of America from Hewlett-Packard, Direct Marketing (DMK), 1320 Kifer Road, Sunnyvale, California 94086. To order upgrades in Europe, please contact your local HP DIRECT organization.

IBM is a trademark of International Business Machines, Inc.
Apple and Macintosh are registered trademarks of Apple Computer, Inc.
MS-DOS and Microsoft are trademarks of Microsoft Corporation.
OS/2 and Presentation Manager are products of International Business Machines and Microsoft Corporation.
Eicon is a trademark of Eicon Technology Corporation
DEC, VT52 and VT100 are registered trademarks of Digital Equipment Corporation

Technical information in this document is subject to change without notice.
Copyright © 1989 Hewlett-Packard Company