

HP NewWave Access

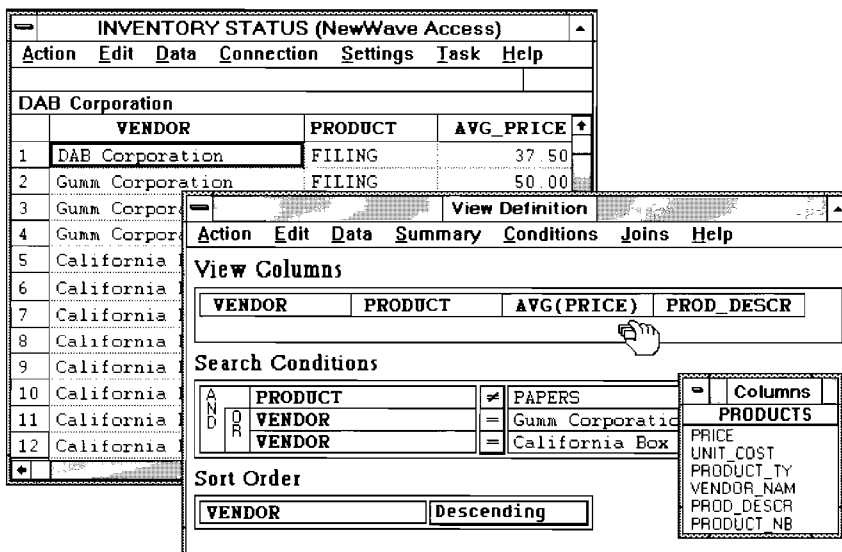
Technical Data

What is HP NewWave Access?

NewWave Access software is a simple, yet powerful interface for integrating PC, minicomputer or mainframe data into desktop applications. NewWave Access builds on HP NewWave, extending the environment to include links to external data sources such as HP ALLBASE/SQL, Oracle, DB2, TurboIMAGE, dBASE® and R:BASE.

As an addition to HP's Information Access product line, and a key component of HP NewWave Office, NewWave Access provides business and MIS professionals alike with a simplified process for incorporating database information into decision support applications, documents and communications.

Figure 1. The NewWave Access interface



Data to the Desktop with the simplicity and power of objects

Benefits of NewWave Access

Simplified Data Retrieval

Remote data is represented as local 'data view' objects in NewWave. With this approach, business professionals can directly utilize database information without programming or learning complicated database syntax.

Seamless Data Integration

Remote data is quickly integrated into MS DOS®, Microsoft® Windows® and HP NewWave applications such as spreadsheets, graphics and compound documents.

Task Automation

Routine reporting and data transfers can be automated and scheduled for later execution.

Foundation for Decision Support

Powerful data manipulation capabilities are provided to MIS professionals. NewWave Access is a flexible and extensible foundation for building customized solutions—business information systems, graphical reporting systems, exception reports, Top 25 lists, or event-triggered reports.

Product Features

Object-Oriented Metaphor

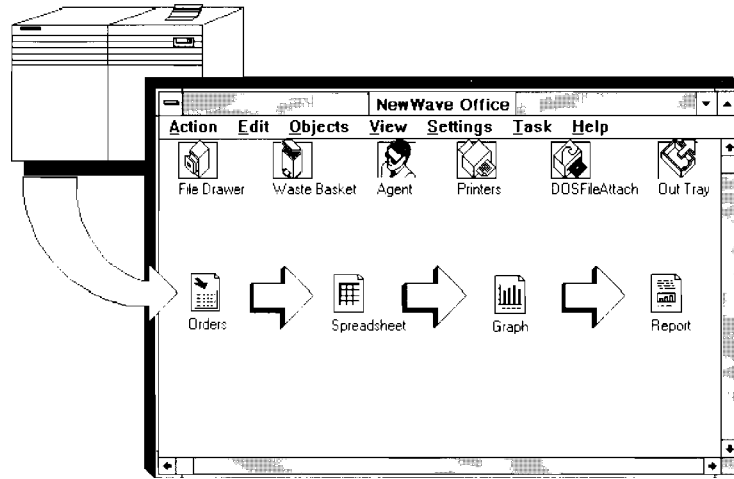
In contrast to traditional query tools, NewWave Access provides business professionals with a simplified process for viewing and using company data. NewWave Access users create “data view” objects—local views or “snapshots” of database information residing elsewhere on the PC or network. Data view objects contain both the definition of the view and its resulting data. This allows data to be viewed or “refreshed” at any time simply by clicking a mouse key.

NewWave Access data views behave similar to other NewWave objects. They can be dropped into documents or other desktop objects for quick integration of business data into memos, reports, graphs or documents.

Graphical Interface

The NewWave Access interface is designed with the business

Figure 2. Integrating remote data into desktop application



professional in mind. Featuring an intuitive mouse-driven, point-and-click interface, NewWave Access facilitates rapid generation of data views. Most important, this is done without requiring knowledge of programming, networking or database syntax.

With NewWave Access, data requests can be generated without typing a single character. Users specify data views by

directly positioning tables, columns and fields on the screen with a mouse. This simple data manipulation approach accelerates the process of collecting data and refining the results.

Dynamic Data Sharing

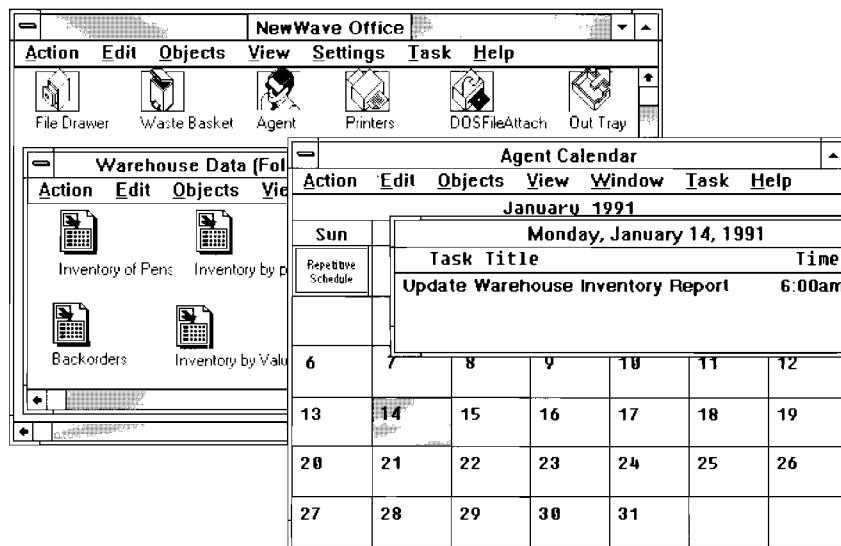
Decision support applications such as spreadsheets, graphics or documents often require updated data. With NewWave Access, this is accomplished with shared views—the dynamic linking capability of HP NewWave. When data in a NewWave Access object changes, shared views of the data in other applications are automatically updated as well.

Data can also be saved for integration with MS DOS and MS Windows applications. NewWave Access outputs data to PC file formats such as dBASE, R:BASE, Lotus® 1-2-3®, SYLK, DIF, ASCII, and remote database and file formats.

Agent Support

One of the most useful features of NewWave Access is task

Figure 3. Scheduling data delivery using the HP NewWave Agent

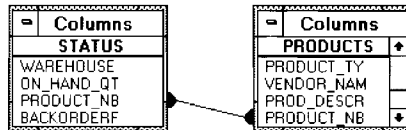
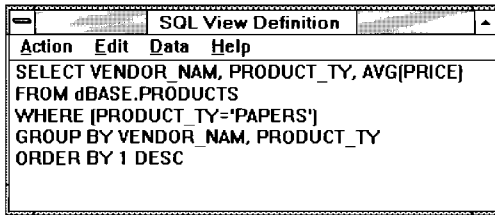


HP Computer Museum
www.hpmuseum.net

For research and education purposes only.



Figure 4. SQL Window and Join Editor add power and flexibility



automation via the HP NewWave Agent. Using NewWave Access and Agent tasks, routine reports and data transfers are simple to automate. Data delivery to applications or other individuals can even be scheduled during off-peak hours to better utilize shared system resources.

Task language extensions are also included with NewWave Access for data interrogation and more advanced data manipulation.

Graphical Join Editor

Defining data views involving multiple tables is simple and intuitive with NewWave Access. Under most circumstances, tables can be automatically joined by matching data in common. For more complicated join requirements, NewWave Access' graphical join editor allows users to easily define relationships between two or more tables. Built-in constraints prevent users from making inappropriate joins and warn them of potential time-consuming production joins.

SQL Window

For users experienced in SQL, the NewWave Access SQL Window provides the full power of the SQL SELECT statement. Within the SQL Window, NewWave Access generates the SQL statement corresponding to the graphical view definition. Users can expand this SQL statement to incorporate advanced data manipulation techniques such as calculated fields, sub-queries, cross-tabs and data string formatting.

Client-Server Architecture

NewWave Access is designed to interface with existing

Ordering Information

Product	Product Number
HP NewWave Access	D2500A
HP NewWave Access, User License	D2501A

For access to data on HP 3000 and HP 9000 systems, NewWave Access requires Information Access server software. Please consult the following data sheets for more information.

Product	Product Number
Information Access Services, HP 3000	LDC# 5952-1702
Information Access Services, HP 9000	LDC# 5952-1703

Information Access server products for databases on the HP 3000 and HP 9000 platforms. As a client-server application, NewWave Access efficiently utilizes DBMS servers for data processing, while moving data manipulation and integration to the PC.

In instances where result data is extremely large, NewWave Access objects can store data on the server, while the data definition remains on the PC within the data view object.

Append Tables

In most cases, once a table has been saved, NewWave Access can append new data to the table. This is extremely useful in generating time series data for graphical reporting systems.

CBT and On-Line Help

Interactive computer-based training lessons are included to help first-time users get started quickly and easily. Also, a complete on-line help facility is available which includes indexed help, key-word search and context-sensitive help.

Data Sources Supported

PC

Input data sources:

R:BASE for DOS, System V
dBASE IV®, III PLUS®, III®

Output data formats:

R:BASE for DOS, System V
dBASE IV, III PLUS, III
Lotus 1-2-3 (WK1)
File formats: DIF, ASCII, SYLK

HP 3000

(Requires HP Information Access)

Input data sources:

TurboIMAGE/3000 databases
HP ALLBASE/SQL
ORACLE

Self Describing files (SD)

MPE Flat files (including Binary
and ASCII)

Information Access Saved Tables
HP Business Report Writer IRF
HP KSAM files

Output data formats:

Information Access Saved Tables
HP ALLBASE/SQL
ORACLE
SD files
MPE Flat files
DIF files

HP 9000

(Requires HP Information Access)

Input and output data formats:

HP ALLBASE/SQL
ORACLE

IBM/DB2

(Requires HP ALLBASE/DB2
CONNECT; refer to datasheet
5952-3212 for details)

Minimum System Requirements

PC

- HP, IBM or Compaq 80286- or 80386-based PC or 100% compatible
- 2-Mbyte extended memory for 80286 standard or 80386 enhanced mode
- 3 Mbytes of expanded memory (EMS 4.0) for 80286, 80386 real mode
- 1.2-Mbyte floppy disk drive
- 40-Mbyte hard disk
- EGA or VGA monitor and card
- MS Windows supported mouse
- MS Windows 3.0
- HP NewWave 3.0
- MS-DOS 3.2 or later

Connections

NewWave Access supports:
Serial connections to the HP 3000
or HP 9000 via ATP and DTC
ports.

LAN support:

HP 3000: NS/3000 and
HP Network Services 2.1

HP 9000: LAN/9000 Series 800
LINK and HP Network
Services 2.1

For more information, call your local HP sales office listed in your telephone directory or an HP regional office listed below for the location of your nearest sales office.

United States:

Hewlett-Packard Company
4 Choke Cherry Road
Rockville, MD 20850
(301) 670-4300

Hewlett-Packard Company
5201 Tollview Drive
Rolling Meadows, IL 60008
(708) 255-9800

Hewlett-Packard Company
5161 Lankershim Blvd.
No. Hollywood, CA 91601
(818) 505-5600

Hewlett-Packard Company
2015 South Park Place
Atlanta, GA 30339
(404) 955-1500

Canada:

Hewlett-Packard Ltd.
6877 Goreway Drive
Mississauga, Ontario L4V 1M8
(416) 678-9430

European Headquarters:

Hewlett-Packard S.A.
150, Route du Nant d'Avril
1217 Meyrin 2
Geneva, Switzerland
41/22 780 8111

Japan:

Yokoyama-Hewlett-Packard Ltd.
15-7, Nishi Shinjuku 4 Chome
Shinjuku-ku
Tokyo 160, Japan
(03) 5371 1351

Latin America:

Hewlett-Packard
Latin American Region Headquarters
Monte Pelvoux No. 111
Lomas de Chapultepec
11000 Mexico, D.F. Mexico
(525) 202-0155

Australia/New Zealand:

Hewlett-Packard Australia Ltd.
31-41 Joseph Street
Blackburn, Victoria 3130
Melbourne, Australia
(03) 895 2895

Far East:

Hewlett-Packard Asia Ltd.
22/F Bond Centre, West Tower
89 Queensway
Central, Hong Kong
(852) 848 7777

**Technical information in this document
is subject to change without notice.**

© Copyright

Hewlett-Packard Company 1990

**All Rights Reserved. Reproduction,
adaptation, or translation without prior
written permission is prohibited except
as allowed under the copyright laws.**

**Printed in USA M1290
5091-0484E**

Lotus and 1-2-3 are U.S. registered trademarks of Lotus Development Corporation. dBASE, dBASE III, and dBASE IV are U.S. registered trademarks of Ashton-Tate Corp. Microsoft, MS DOS and Windows are U.S. registered trademarks of Microsoft Corporation.