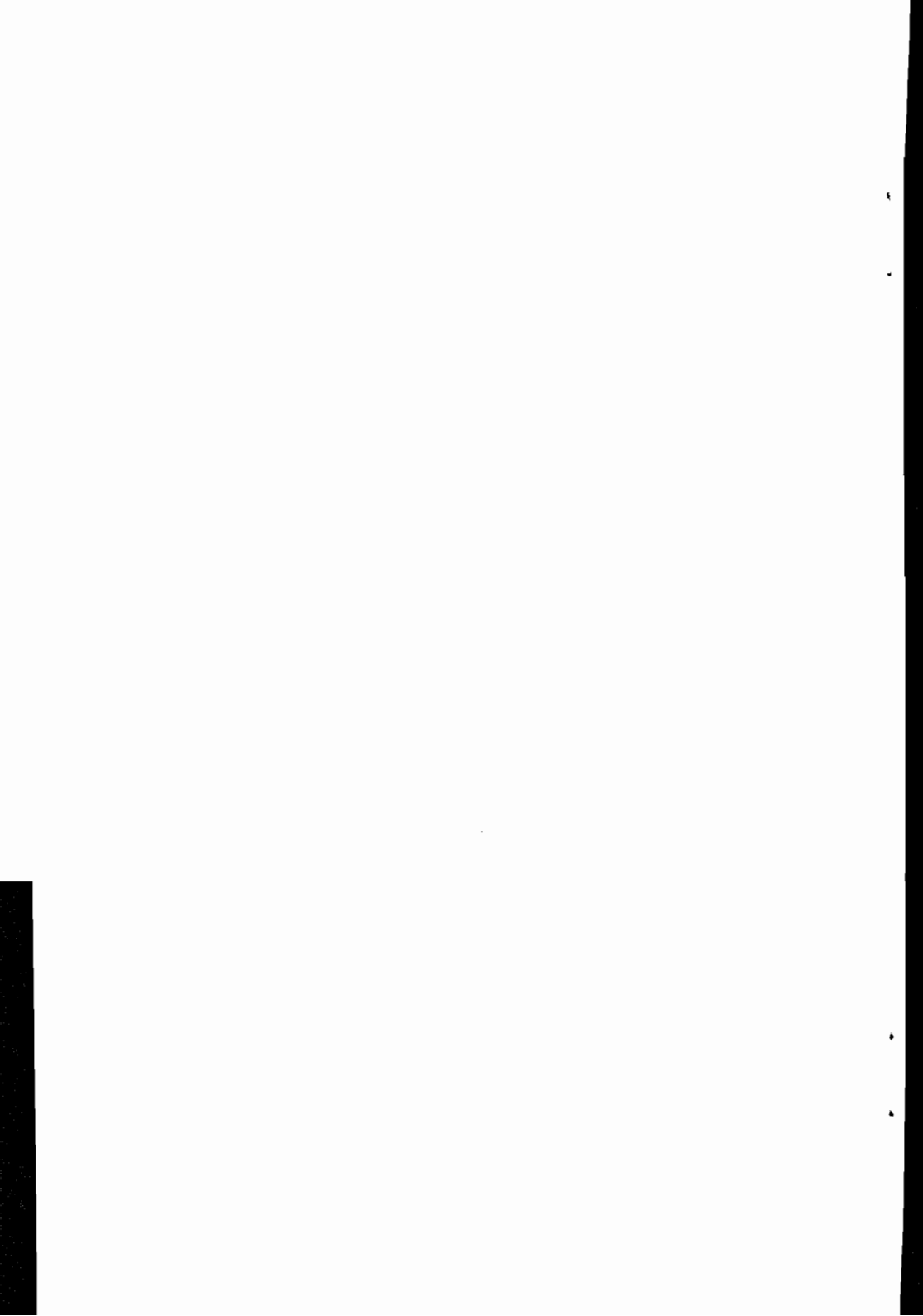


Using FontLoad
Hewlett-Packard's
Font Download Utility

**Font
Load**

HP Computer Museum
www.hpmuseum.net

For research and education purposes only.



Using FontLoad

Hewlett-Packard's Font Download Utility

(for LaserJet Soft Fonts)



Notice

The information contained in this document is subject to change without notice.

HEWLETT-PACKARD MAKES NO WARRANTY OF ANY KIND WITH REGARD TO THIS MATERIAL, INCLUDING, BUT NOT LIMITED TO, THE IMPLIED WARRANTIES OF MERCHANTABILITY AND FITNESS FOR A PARTICULAR PURPOSE. Hewlett-Packard shall not be liable for errors contained herein or for incidental or consequential damages in connection with the furnishing, performance, or use of this material.

Copyright © 1987, 1988 HEWLETT-PACKARD COMPANY. This document refers to computer software which is protected by copyright. All rights are reserved. Reproduction, adaptation, or distribution of copies of this document and the software is prohibited, except as allowed under the copyright laws and license agreement.

HP Vectra Personal Computer is a product of Hewlett-Packard Company. Microsoft, MS Windows and MS DOS are registered trademarks of Microsoft Corporation.

IBM; IBM Personal System/2; IBM PC, PC/AT and PC/XT are registered trademarks of International Business Machines Corp.

Century Schoolbook is a registered trademark of Kingsley-ATF Type Corporation.

Printing History

First Edition - September 1987
Second Edition - November 1987
Third Edition - January 1988
Fourth Edition - July 1988

This manual was created on a Hewlett-Packard Vectra Personal Computer. The text is printed using the Century Schoolbook and Helv soft fonts. The camera ready text was generated on a Hewlett-Packard LaserJet series II printer.

Table of Contents

About This Manual	2
Key Words	4
Quick Start	5
What is FontLoad?	6
What You Do With FontLoad	6
What You Need to Use FontLoad	7
Getting Started	8
Before You Start	8
Starting FontLoad	10
Using FontLoad	11
Choosing “New Setup” or “Get Setup”	12
Choosing the Font Directory Pathname	13
The Printer Device File	14
Selecting Fonts	15
Downloading Selected Fonts	18
Saving to a Setup File	19
Using a Setup File	20
About Character Width Tables	21
Sample FontLoad Sessions	22
FontLoad Hints	28
In Case of Difficulty	32
Quick Reference Pages	36
The FontLoad Screen	36
The Function Keys	39
INDEX	43

About This Manual

This manual (*Using FontLoad*) contains information on how to use the FontLoad font utility to download soft fonts to the Hewlett-Packard LaserJet family of printers.†

Hewlett-Packard soft fonts are supplied in one of two different formats: the “**standard**” soft fonts or the “**SuperFont**” format. Your fonts are packaged with one or two additional manuals, depending on their format:

- A soft font *Reference Guide* is included with **all** Hewlett-Packard soft fonts. Your *Reference Guide* is the primary source of information about your soft fonts. It shows you samples of all the fonts available and helps you choose the ones you would like to use.
- If your soft fonts are in the Hewlett-Packard **SuperFont** format, you will also receive the *Using MakeFont* Guide. *Using MakeFont* tells you how to use the MakeFont utility for installing Hewlett-Packard’s SuperFont files. MakeFont installs font files on the disk drive you specify in a format ready to be downloaded to your printer. (SuperFont files **must be installed** on your disk drive using MakeFont before they can be downloaded to the printer.)

NOTE

If your soft fonts are not in the SuperFont format, you **do not need the MakeFont utility or manual**. Your font *Reference Guide* will clearly inform you if your fonts **are** in the SuperFont format, and if you do need to use MakeFont before downloading.

† Not available for use with the original LaserJet.

Inside are the following sections:

- **Quick Start** (page 5) - This page gives you a brief, step-by-step overview of the procedure to download your fonts. Try it out. If you need further explanations about any of the steps, use the page references given.
- **What is FontLoad?** (page 6) - Here is an explanation of the FontLoad utility, and how you can use it to download fonts directly to your printer or to create "setup files" for batch downloading.
- **What You Need to Use FontLoad** (page 7) - Check this page to be certain you have all the hardware and software you need. The minimum and recommended system requirements are detailed here.
- **Getting Started** (page 8) - Here is the detailed, step-by-step procedure to get the utility "up and running."
- **Using FontLoad** (page 11) - This section shows you, step-by-step, how to use the FontLoad screens and function keys to build a font selection list, how to download your font selections, and how to create a download setup file.
- **Sample Sessions** (page 22) - Sometimes a "real life" example is the easiest way to learn. After "setting the stage" with some assumptions, we will take you through a few typical font download processes.
- **In Case of Difficulty** (page 32) - Here are some helpful hints to try if you are experiencing difficulty getting FontLoad to download your fonts. Also provided is information about obtaining outside help, including Hewlett-Packard's LaserJet Assist Service.
- **Quick Reference Pages** (page 36) - The first part of this section provides a detailed description of the FontLoad screen. We explain usage of the Message Line, the Font Window, and other parts of the screen. A description of each of FontLoad's function keys follows. Use the reference section to clarify usage of the utility.

Key Words

Downloading - Downloading refers to the process of transferring soft fonts from your computer to the printer's memory. Hewlett-Packard's SuperFont files must first be **installed** (on disk) before they can be downloaded.

FontLoad - This is Hewlett-Packard's font downloading utility. It sends the fonts you select to the printer's memory. See "What is FontLoad" (page 6) for more information.

Font Filename - Font filenames are given to each font. They describe the font's characteristics using a specific code developed by Hewlett-Packard.

Font ID - A font ID number identifies each downloaded font. Font ID numbers are used to call in or change fonts within a document using a printer command. You can specify an ID number when using FontLoad, or accept a default ID number assigned by the utility.

Installation - The SuperFont files provided to you on diskette are in a compressed format and must be "installed" before sending them to the printer. Use the MakeFont utility (and the *Using MakeFont* manual) for installation.

MakeFont - MakeFont is a font installation utility for use with HP's SuperFont files, installing them in the symbol set and orientation you specify. Refer to *Using MakeFont* for more information.

Permanent / Temporary fonts - Fonts assigned a "permanent" status during downloading remain in the printer until it is turned off. "Temporary" fonts are deleted when the printer is reset.

Point Size - Character height is measured in point sizes. There are 72 points per-inch. This text is printed using a 10-point font.

SuperFont files - SuperFont files are Hewlett-Packard's font files that are supplied on diskette in a compressed format. SuperFont files have certain fixed characteristics (typeface, pitch and point size) but allow you to specify the symbol set and orientation you want to use. SuperFont files must be **installed** using MakeFont before they can be **downloaded** to the printer.

Utility - Utilities are tools that help you use your computer or application more effectively. Hewlett-Packard's MakeFont and FontLoad are utilities that install and download soft fonts.

Quick Start

This page is provided for those who do not desire an in-depth explanation of procedures. If you fit this category, give this page a try. If you need further clarification for any step, check the page references shown in the right column.

Step No.	Description	More Info
1	Back up the Utility diskette.	Pg 8
2	Use the HP MakeFont Utility (for SuperFont files) or the DOS COPY command to install all soft font files to a separate directory (or sub-directory) on your hard disc.	Pg 8
3	Start FontLoad. Type: <i><path></i> FLOAD	Pg 10
4	If this is first session, press [F1] NEW SETUP	Pg 12
5	Enter the pathname of your soft font directory.	Pg 13
6	Enter printer device filename (or accept default LPT1). Note that a disc filename is valid for sending character width tables.	Pg 14
7	Select fonts for downloading (FontLoad will assign ID numbers and permanent status, or you can override).	Pg 15
8	To download, press [F3] DOWNLOAD FONTS from download menu. At this point, FontLoad tells you to verify that the printer is on-line and asks if you want an optional printer listing.	Pg 18
9	To create a setup file (download information file), use the SAVE SETUP function key, providing a filename when prompted. FontLoad allows an optional printer listing.	Pg 19
10	To send character width tables (to printer or disc file), press [F4] CHAR WIDTH from the download menu.	Pg 21
11	To exit: Press [F8] QUIT (when displayed) otherwise, press [CTRL] C.	Pg 42

What is FontLoad?

FontLoad is a font downloading utility that allows you to quickly and easily download soft fonts to LaserJet family printers.

What You Do With FontLoad

Through simple prompts and menu commands, FontLoad searches for soft font files in the path that you specify, creating a table with descriptive information on all available soft fonts. You are then able to “pick and choose” through the fonts, deciding which fonts you want to download, assigning font ID numbers and either permanent or temporary status (more on this later).

Downloading

As soon as you have made your font selections from those displayed on the menu, you can send them to the printer (download them) using a single function key command.

Font Setup Files

Through another function key command, FontLoad gives you the option of saving font download information to a “setup file.” Font setup files contain all the information necessary to download the same set of soft fonts as often as needed. This provides easy use of customized font configurations and “style sheets” for different applications.

FontLoad setup files **do not take a lot of disk space**, so it is feasible for you to have many different files ready for quick, customized downloading.

What You Need to Use FontLoad

A Personal Computer

FontLoad runs under DOS, version 2.1 or later, on the IBM® PC, PC/XT, PC/AT; HP Vectra PC, PC-compatibles and IBM Personal System/2 computers. FontLoad will also run under the DOS mode of os/2 systems.

Your personal computer should have at least 256 kilobytes of internal memory (RAM). A hard disk is recommended. (If you do not have a hard disk, see "Using FontLoad Without a Hard Disk," page 31.)

A Printer

FontLoad supports all Hewlett-Packard LaserJet family printers that use downloaded fonts.[†] Your printer should be properly configured and connected to your computer.

Soft Fonts

FontLoad supports only those PCL format soft fonts that are approved by Hewlett-Packard for use on LaserJet printers. If you are using HP's "SuperFont" files, you must first "install" them using the MakeFont Utility.

Options

The Microsoft® mouse is supported on the IBM PC and compatibles. In addition, the HP-Mouse is supported on the HP Vectra. FontLoad can be run under MS-Windows[‡] (a special PIF file is supplied - see "Starting FontLoad" page 10).

[†] Not available for use with the original LaserJet.

[‡] You can enter and exit FontLoad from within Windows, but FontLoad is a "non-windowing, non-switching, non-transferring" application. Refer to your MS-Windows manual for more information.

Getting Started

Before You Start

There are several steps you should follow before you begin using FontLoad for the first time:

Make back-up copies:

Before going any further, you should make a back-up copy of the diskette. If you have received your FontLoad utility along with new soft fonts, you should copy those diskettes also. You can use the operating system (DOS or DOS mode of os/2) COPY or DISKCOPY command. Refer to your operating system manual for more information.

Install (or copy) font files to your hard disk:†

You can make font directories and store fonts on your hard disk. (If you have used the MakeFont utility with Hewlett-Packard's SuperFont files, you may have already done this.) A single font directory may contain up to 400 fonts. It is recommended that font directories contain only fonts and no other type of files‡

You can use the operating system MKDIR command to create new directories and the operating system COPY command to copy the fonts you want. (For hints on managing directories, see Page 29).

For example, the commands:

```
MKDIR C:\FONTS[☐]
COPY A:*.*.USP C:\FONTS[☐]
```

...will make a new directory called "FONTS" on the C: drive and copy all font files with the extension .USP (for ASCII symbol set in Portrait orientation) from the diskette currently in the A: drive.

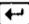
†If you do not have a hard disk, you will have to load FontLoad and your font files from a diskette. This will limit the number of fonts you can handle with FontLoad. See "Using FontLoad Without a Hard Disk" on page 31 for more information.

‡You should keep your font files in separate directories away from other files, because FontLoad will open every file in the directory you specify.

Know your "printer device file name:"

FontLoad will prompt you for a destination printer device file. This is the output device name signifying the interface type (parallel or serial) and port number where the printer is connected. Typical printer designators are LPT1 (first parallel port) COM1 (first serial port) LPT2 or COM2 (second parallel or serial port, respectively).

If you are running a parallel printer, you **must** call up the AUTOEXEC.BAT file (using your text editor), to see if there is a line that starts with "MODE." If you are running FontLoad under the DOS mode of an os/2 operating system, you must call up the OS2INIT.COM file to check for the line that starts with "MODE." If the line exists, ensure that the character "p" is the *last* parameter entry on the line. In the following example for LPT1, there are no entries between the commas:

```
MODE LPT1: , , p 
```

If you have entries between the commas, do not to delete them; but add the "p" as the last entry on the line.

If you do not see a line that begins with MODE, you must create one just like the example above (except inserting LPT2 or other if appropriate).

By making sure "p" is the last entry, you will be able to obtain a printed listing of the fonts you download. Once you edit and replace this file, you **must re-boot** (re-start) your computer. (Refer to your operating system manual for more information.)

Be aware of the amount of memory in your printer:

When a font is downloaded, it occupies a certain amount of printer memory, **which will not available for any other use**. If you are downloading several fonts at one time, or if you print complex graphics, you need to carefully monitor the amount of memory in your printer.

FontLoad tells you approximately how much printer memory the selected fonts will require. This helps you manage your printer's available memory when downloading or printing graphics. Refer to your user's or technical reference manual for more information about your printer's memory.

Starting FontLoad

Once you have backed-up your FontLoad program diskette and copied your soft fonts to a separate directory on your hard disk, you are ready to start your first FontLoad session. You can run the FontLoad program from any disk drive, however, program loading will be faster if you copy FLOAD.EXE to your hard disk.

You can enter FontLoad in different ways, depending on your situation:

- You can enter directly from the **operating system command line**.
- If you have an HP Vectra personal computer, you can add the FontLoad application to your **PAM menu** and load it from there (refer to your *Using Vectra* manual for more information).
- If starting from **within MS-Windows**, the supplied file FLOAD.PIF **must** reside in the same directory as FLOAD.EXE. Refer to your Windows manual for additional PIF file information.

From the Operating System Command Line:

Type in the command FLOAD (on the DOS command line) preceded by any necessary path information. For example, if you are already in the same directory as FontLoad, just type FLOAD. If you have copied the FontLoad program to a subdirectory named "UTIL" on drive C, you could type: C:\UTIL\FLOAD[↵].

Using a Monochrome Monitor:

When running FontLoad on some systems that use a monochrome monitor, there may be insufficient contrast on the FontLoad screens. If this occurs, add /M to the command line to turn off the color display functions of FontLoad. For example, you could type: C:\UTIL\FLOAD /M[↵]. You can also use the /M on the command line if you have a color monitor and simply wish to disable the color display.

Using FontLoad

When you first enter FontLoad, the screen looks like this:

(c) Copyright Hewlett-Packard Co. 1987 FontLoad Version 1.0

Choose NEW SETUP, GET SETUP, HELP, or QUIT function key.

ID#	P/T	Font Description	Pitch	Pts	Sym Set	O Mem	Filename

Printer Memory Required: 0 KB

Source :

Destination:

1	NEW SETUP	2	GET SETUP	3		4		5		6		7	HELP	8	QUIT
---	-----------	---	-----------	---	--	---	--	---	--	---	--	---	------	---	------

Figure 1. The Initial Screen

NOTE

A press of the ESCAPE key (**ESC**) will take you from the prompt line or a process back to the current menu. Simultaneously pressing **CTRL** and **C** will exit FontLoad.

Choosing "New Setup" or "Get Setup"

Notice the FontLoad prompt:

Choose NEW SETUP, GET SETUP, HELP, or QUIT function key.

- The **NEW SETUP** function key (**F1**) will cause FontLoad to begin creating a new font setup for you to download to the printer. Before leaving FontLoad you are given the opportunity to save this new setup to a file for later re-use.
- The **GET SETUP** function key (**F2**) is used after you have saved a setup file. FontLoad will read the file you specify and allow you to modify it however you wish.
- The **HELP** function key (**F7**) allows you to access FontLoad's help screens, which provide useful information reminding you how FontLoad works.
- The **QUIT** function key (**F8**) will return you to the operating system, PAM, or MS-WINDOWS, depending on where you entered the FontLoad session.

If this is your first FontLoad session, press **NEW SETUP (F1)**.

If you have previously saved a FontLoad setup file, which you now want to modify, press **GET SETUP (F2)**.

Choosing the Font Directory Pathname

If you pressed NEW SETUP (F1), FontLoad then prompts:

What is the pathname of the font directory?

(If you pressed GET SETUP (F2) in response to the first prompt, FontLoad asks for the name of the Setup file instead of the font directory.)

Type in the full pathname where your soft fonts are stored (or your setup file path and name). For example, if you have copied your soft fonts to a directory named FONTS on the C disk, type:

C:\FONTS

FontLoad displays the messages,

Reading font table.

Looking for fonts: < font file names >

FontLoad checks all files in the directory you specified and determines whether each is a soft font file. When FontLoad finds a font file, it reads pertinent font data and enters it into a "font table." FontLoad does two things with the font table:

- It writes the font table information to a file named "FONT_TAB.DTA," which is saved in the same directory as the font files, and...
- It displays the font table information in the "Font Window" on the screen.

NOTE

Depending on the number of fonts in a directory, the initial time to create a font table will vary. The next time you run FontLoad using the directory, the existing table will be accessed (and updated if you added more fonts).



Choosing the Printer Device File

FontLoad then asks:

Enter printer device file. <Enter> selects LPT1.

If LPT1 is the correct device name for your printer, just press , otherwise, type in the correct name before pressing . Some other common device names are: LPT2, COM1, or COM2.

Selecting Fonts

After entering the printer device filename, you can begin the font selection process. You will notice that the "Font Window" now contains a great deal of information about each font that was found in the font directory. New function labels are also displayed (Figure 2).

The screenshot shows a window titled "FontLoad" with a table of font information. Below the table, there are fields for "Printer Memory Required", "Source", and "Destination". At the bottom, there are eight numbered buttons: 1 SELECT FONT, 2 NEXT VALUE, 3 DNLOAD FONTS, 4 CHAR WIDTHS, 5 SHOW SELECTED, 6 SETUP KEYS, 7 HELP, and 8 QUIT.

ID#	P/T	Font Description	Pitch	Pts	Sym Set	O	Mem	Filename
	P	HelvCond_Blk Black	Prop	14	ASCII	P	18	HC140KPN.USP
	P	HelvCond_Blk Black	Prop	18	ASCII	P	27	HC180KPN.USP
	P	HelvCond_Blk Black	Prop	36	ASCII	P	88	HC360KPN.USP
	P	HelvCond_Blk Black	Prop	48	ASCII	P	153	HC480KPN.USP
	P	HelvOut_Blk Black	Prop	48	ASCII	P	187	OH480KPN.USP
	P	TmsRmn	Prop	10	ROMAN8	p	24	TR100RPN.R8P
	P	TmsRmn Bold	Prop	10	ROMAN8	p	24	TR100BPN.R8P
	P	TmsRmn Italic	Prop	10	ROMAN8	p	24	TR100IPN.R8P

Printer Memory Required: 0 KB
Source : c:\fonts\
Destination: LPT1

1 SELECT FONT 2 NEXT VALUE 3 DNLOAD FONTS 4 CHAR WIDTHS 5 SHOW SELECTED 6 SETUP KEYS 7 HELP 8 QUIT

Figure 2. The Font Selection Screen

When you are ready to select a font:

1. Position the cursor on the line where the font is listed and press **SELECT FONT** (**F1**). The font will be highlighted and an ID number assigned. A cumulative total of printer memory used appears in the "Printer Memory Required" field at the bottom of the screen.

(If you want to assign your own ID number or change the font download status to "temporary," see pages 16 and 17.)

2. Move the cursor to the next font to be downloaded and press **SELECT FONT** again. If there are more fonts in the directory than can appear in the Font Window, you can use the cursor control keys (or the mouse) to scroll.
3. Repeat the above steps for each font you want to select.
4. If you do not want to change any of the "default" values assigned by FontLoad, you can download your font selections now. Refer to "Downloading Selected Fonts," page 18.

NOTE

FontLoad will not allow you to open directories containing more than 400 fonts. If you have more than 400 fonts, you must group your fonts into smaller directories before using FontLoad (see *Managing Large Font Directories*, page 29).

Specifying the Font ID

Whenever you select a font for downloading using FontLoad, it must be assigned a corresponding ID number. FontLoad will assign and increment ID numbers automatically, each time you press the SELECT FONT function key, or, if you wish, you can type in ID numbers yourself. Valid font ID numbers are whole numbers in the range of 0 through 32767.

To assign your own font ID number, just place the cursor in the ID column and:

- type in the number you want, OR
- use the NEXT VALUE key to increment, OR
- point to the ID field and click the left mouse button.

You cannot change the assigned ID number of a font that is presently selected. You must first “unselect” it (see “Unselecting Fonts” - page 17).

“Permanent” or “Temporary” Status?

The other field on the Font Window that you can change, is the P/T (or Permanent/Temporary) column. Each downloaded font can be assigned a “status” of either permanent or temporary.

- Permanent status means that the font will stay in your printer’s memory until you turn the power off (or specifically delete it using a printer command).
- Temporary status means that the font will be erased from printer memory whenever the printer is reset (either through software or from the control panel).

To change the status from P to T (or T to P), just move the cursor onto the P or T and press the NEXT VALUE function key (or point and click the left mouse button).

NOTE

For most applications permanent status is suggested. Refer to your printer’s *Operator’s* and *Technical Reference* manuals for more information on font status, deleting fonts, and printer reset.

The “SHOW SELECTED” Key

The SHOW SELECTED function key (**F5**) allows you to display a list of only those fonts which have already been selected. When you press the key, an asterisk (*) appears in the upper right corner of the key to indicate you are in the SHOW SELECTED mode. The key is a “toggle” which means you can switch back and forth between listing only the selected fonts and listing all available fonts.

“Unselecting” Fonts

If you change your mind after selecting a font (but **before downloading**), you can “unselect” it simply by moving the cursor to the line again and pressing SELECT FONT. The screen highlight indicating that the font is selected will turn off, however, the font ID number assignment will remain. If you want to delete the ID number from that font, erase it using the space bar or delete key (**DEL**).

Downloading Selected Fonts

1. When you are ready to download your list of selected fonts, just press DOWNLOAD FONTS (**F3**) from the download menu). FontLoad prompts:

Be sure printer is connected and on line. Press <enter> to continue.

2. Verify that your printer is powered-on and the On Line indicator is illuminated. When ready press (**↵**). FontLoad asks:

Do you want a listing of the fonts being downloaded? (y/n)

3. If you type a Y (or y), FontLoad will print out a complete list of all the fonts you are downloading to the printer, showing their assigned font ID numbers, status (permanent or temporary) and the total printer memory the list of fonts will require. These listings are useful references to help you remember what is in the printer. If you don't want a listing, type N (or n), or just press (**↵**).

When the downloading process begins, FontLoad says:

Downloading font(s)

As each font is downloaded, the highlighting is turned off and an asterisk (*) is displayed between the ID and P/T fields.

Downloading **may take some time**. Larger point size fonts and fonts with more characters in their symbol sets take longer than small fonts with fewer characters. If you wish to interrupt the process, press **ESC** or **CTRL C**.

NOTE

If you are not certain whether the fonts you have selected for downloading will all fit in your printer's memory, **watch your printer's display panel** during the downloading process. If the printer's memory overflows, the Error 20 (memory overload) message will intermittently be displayed on the printer's control panel, even though FontLoad may appear to download all fonts successfully. See question number 3 on the "Troubleshooting Checklist" on page 34 for help.

When downloading is complete you can select and download more fonts (see page 15), save a setup file (page 19) or press (**F8**) to exit FontLoad.

Saving to a Setup File

FontLoad allows you the option of saving your font selections to a "setup file" which can be used as often as you wish to download your font selections to the printer.

To create a setup file:

1. From the download menu, press SETUP KEYS (**F6**). The setup keys menu is displayed.
2. Press SAVE SETUP (**F3**). FontLoad asks:

Enter the filename for this setup file.

3. Type in the full path and filename you want to use, press **↵**. FontLoad prompts:

Do you want a listing of this download setup? (y/n)

4. Type Y or y if you want a complete listing similar to the one FontLoad prints for downloading. These listings are convenient references to remind you what is in your setup file. If you don't want a listing, type N or n or press **↵**.

FontLoad begins writing the file, and says:

Saving setup file.

When finished, the screen displays:

Setup file saved.

NOTE

Setup files do not contain the actual soft fonts, only the information necessary to download a pre-defined list of fonts. When using setup files your soft fonts **must be available** in the location you specified as "font directory pathname" when creating the setup file.

Using a Setup File

Once you have created a download setup file, you can use FontLoad to download the fonts you have selected as often as you wish, without selecting your fonts again.

From the Operating System Command Line

Enter the command:

```
FLOAD <setup filename> [/R]
```

Type the complete path and filename of your setup file where we show “<setup filename>.” The /R option sends an Esc E (reset) printer command to the printer. This deletes any temporary fonts stored in the printer’s memory. **A printer reset may also affect other printer settings. You can omit the /R part of the command if desired.** Refer to your printer *Operator’s* manual for information about printer reset.

If you are not in the same directory as FontLoad, be sure to provide the full pathname before the FLOAD command.

For example:

Let’s say you want to use a setup file named MEMO.SET which you have saved into the directory SETUPS on your C: drive. Let’s also assume that your FontLoad program is loaded into a directory named UTIL, also on the C: drive. A complete path would then be:

```
C:\UTIL\FLOAD C:\SETUPS\MEMO.SET /R
```

From a .BAT File

You can add the FLOAD to a “batch file” (such as AUTOEXEC.BAT) to cause your soft fonts to download automatically. (In the case of AUTOEXEC.BAT, they will download every time you boot-up your computer.)

When creating (or adding to) your batch file, always enter the full path names for both the FLOAD command and the setup file. Be sure your printer is turned on and on-line before running.

Refer to your operating system documentation for more information on AUTOEXEC.BAT and using batch files.

About Character Width Tables

Character width tables contain a great deal of technical information about individual characters of a specific font. This information is useful to **application programmers** when writing programs that support Hewlett-Packard fonts.

The CHAR WIDTHS function key (**F4**) from the download menu) sends this technical information to whatever is specified as the "Destination" at the bottom of the screen. This can be a printer or a **disk file**.

If you want to send this output to a file, you can use NEW SETUP or GET SETUP without quitting FontLoad). Specify a disk filename when you are prompted:

Enter printer device file.

Select the fonts that you want character width tables for, and press the CHAR WIDTHS function key. The character width tables will be sent to the destination file. A list of the control sequences used to set up the printer will also be sent.

Sample FontLoad Sessions

This section will “walk you through” a few likely examples of ways you might want to use the FontLoad utility. For the sake of clarity in the steps, we will make a few assumptions, which are explained at the start of each sample session.

Sample 1: Creating a “New Setup”

Assumptions - Sample 1:

- You have copied your FontLoad program to a operating system directory on your hard disk, and you are currently in that directory. (If you are loading FontLoad from MS-WINDOWS, PAM or a diskette, you can tailor step 1 to fit.)
- Your HP approved soft font files are stored in a directory on the C drive which you have named FONTS. (If your soft font files are stored elsewhere, alter the pathname shown in step 3.)
- Your HP LaserJet family printer is properly set up, powered on, on-line, and configured to your computer with a device name of LPT1. (If your printer device name is not LPT1, type the correct name in step 4.)

If your actual situation differs in some other way from that described, you can substitute the correct information as you work through the example. (You can refer to the FontLoad HELP screens, or to the appropriate instructions in the “Using FontLoad” section of this guide if you need assistance.)

Steps - Sample 1:

1. Type FLOAD to start the program. FontLoad prompts:

Choose NEW SETUP, GET SETUP, HELP, or QUIT function key.

2. Press **[F1]**, NEW SETUP. FontLoad prompts:

What is the pathname of the font directory?

3. Type C: \FONTS \leftarrow to tell FontLoad to look in that directory for your font files. FontLoad updates your font table and displays the available fonts in the "Font Window."

FontLoad then prompts:

Enter printer device file. <Enter> selects LPT1.

4. Press \leftarrow to accept LPT1 as the printer device file.

Now you can begin selecting fonts. For this example, let's assume you want the font ID numbers to start at 100 and increment automatically from there. We will also assume that you want all fonts to be downloaded in a "permanent" status.

5. Move the cursor to the line of the first font you wish to select, inside the ID# column.
6. Type 100.
7. Press SELECT FONT (**[F1]**) (or click the left mouse button).
8. Move the cursor to the next font you want selected, and press SELECT FONT (**[F1]**) (or click the left mouse button).
9. Continue step 8 until all the fonts you want to download have been selected.

10. Press the SHOW SELECTED function key (**F5**) to show only the fonts you have selected in the Font Window. This makes it easier to check your list of selected fonts.
11. Check the "Memory required" line at the lower left of the screen to be sure you are not exceeding the printer's capacity.
12. Press DOWNLOAD FONTS (**F3**) from the download menu). FontLoad prompts:

Be sure printer is connected and on line. Press <enter> to continue.

13. Verify that your printer is powered-on and the On Line indicator is illuminated. When ready press (**←**). FontLoad asks:

Do you want a listing of the fonts being downloaded? (y/n)

14. Type Y for a printer listing. The listing is sent while FontLoad begins downloading the fonts, placing an asterisk (*) next to each font as it is downloaded.

When all the fonts have been downloaded, FontLoad returns control to you. At this point, you can select and download more fonts, quit this session, or save this setup file. For detailed instructions on creating a setup file, see "Saving to a Setup File" on page 19.

15. Press the QUIT function key (**F8**) if you want to leave this FontLoad session.

Sample 2: Modifying an Existing Setup File

Assumptions - Sample 2:

All the assumptions for Sample 1 (on page 22) apply to this sample also, PLUS...

- For this example, we will assume you have already created a setup file to use for memos, which you named MEMO.SET and saved in a directory named SETUPS on your C: disk drive. (The process for creating setup files is described on page 19.)
- You have just added some new soft fonts in a directory named FONTS in your C: drive.
- You now want to substitute two new fonts for two older fonts which you regularly use in your memos.
- For this example, we'll say that you want to add two new fonts with the file names: NEWFONT1.USP and NEWFONT2.USP ...and the two fonts you no longer want to be downloaded are named: OLDFONT1.USP and OLDFONT2.USP.
- You want NEWFONT1 to be assigned the same font ID number as OLDFONT1 used, and NEWFONT2 the same as OLDFONT2.

If you want to step through this example using FontLoad, just substitute the correct file and path names to fit your actual situation. (You can refer to the FontLoad HELP screens, or to the appropriate instructions in the "Using FontLoad" section of this guide if you need assistance.)



Steps - Sample 2:

1. Type FLOAD to start the program. FontLoad prompts:

Choose NEW SETUP, GET SETUP, HELP, or QUIT function key.

2. Press [F2], GET SETUP. FontLoad prompts:

What is the name of the setup file?

3. Type:

C:\SETUPS\MEMO.SET

FontLoad now updates the font table, adding all the information for the new fonts you have added to your font directory.

NOTE

If you have added several new fonts to your font directory, the updating process may take some time.

4. FontLoad then prompts:

Enter a new printer device file. <Enter> selects the current device.

Since we have not changed the printer destination, just press to retain the current setting.

5. The Font Window is now displayed. Note that the SHOW SELECTED light (asterisk) is ON. Only the selected fonts are displayed.
6. Press SHOW SELECTED to turn the setting OFF, and display all available soft fonts. Your two new fonts will now appear in the Font Window.

7. Unselect the old fonts:

- a. Move the cursor to the line where OLDFONT1.USP is displayed.
- b. Press SELECT FONT (**F1**). The line's highlighting will turn off.
- c. Move the cursor to the line where OLDFONT2.USP is displayed and repeat step b.

8. Select the new fonts:

- a. Move the cursor to the line where NEWFONT1.USP is displayed.
- b. Move the cursor into the ID column and type in the same ID number that OLDFONT1 used.
- c. Press SELECT FONT (**F1**). The line will be highlighted.
- d. Move the cursor to the line where NEWFONT2.USP is displayed and repeat steps b and c, typing in the ID number that OLDFONT2 used.

9. Press SETUP KEYS (**F6**) and SAVE SETUP (**F3**). FontLoad will ask:

Enter the setup filename. <Enter> selects the current name.

10. Press **↵** to save the setup to your old name. FontLoad asks:

Do you want a listing of this download setup? (y/n)

11. Type "Y." FontLoad prompts:

Be sure printer is connected and on line. Press <enter> to continue.

12. Verify that your printer is powered-on and the On Line indicator is illuminated. When ready press **↵**. FontLoad prints the listing, then says:

Setup file saved.

13. Press the QUIT function key (**F8**) if you want to leave this FontLoad session.

FontLoad Hints

This section re-emphasizes some of the important, but perhaps less obvious things about FontLoad which will help you get the results you are looking for.

One Source/Destination per Set-up

One Source:

Remember that for each FontLoad set-up session, you can specify only one font source. That is, FontLoad will search only one directory for its source of fonts to use for downloading.

FontLoad also needs to be able to write the font table file, FONT_TAB.DTA to the font directory. If your soft fonts are on a diskette, the diskette must **not be write protected** and must have enough space available for FontLoad to write the font table data.

Again, if you do not have a hard disk, FontLoad will be limited to the number of fonts on one diskette for each session.

One Destination:

For each FontLoad setup, you can have only one Destination (shown at the bottom of the screen). If you have more than one printer, or if you want to specify a disk filename as the destination, you must create a new setup file to do so. Note that you can use the NEW SETUP or GET SETUP commands to change the destination without quitting FontLoad.

Making Several Setup Files

One of the features of FontLoad is its ability to create several different setup files for later usage. This ability should help you get the maximum benefit from customizing your print “environments” for different uses.

For example, a setup file named MEMO.SET could contain the fonts used to create memos; one named DISPLAY.SET could contain the fonts used to create displays; one named REPORT.SET could contain the fonts used to create reports, and so on.

To enable more than one of these sets of fonts to be loaded into the printer at one time, they must have unique font ID numbers. This is easily accomplished with FontLoad by using a separate block of ID numbers for each download setup (such as 100-199 for memos, 200-299 for reports, etc) . Just enter the first number of the range for the current download setup before selecting the first font. A font selection will automatically assign the next highest ID number.

Managing Large Font Directories

A single font directory can have a maximum of 400 fonts. If you have more than 400 fonts, group them into several small directories. It is much easier to select fonts from small individual directories rather than scrolling through long lists of fonts. Here are a few suggested ways to group fonts:

- By orientation (portrait or landscape)
- By symbol sets
- By application (memo, text, or spreadsheet fonts, etc.)
- By typeface name (Helv, TmsRmn, etc.)

Using Temporary Fonts

“Temporary” font status is useful for helping you manage your printer’s memory. For example, if you want to download a font and use it for a limited time (such as a 48 point font for a special headline), then you can use the “temporary” font status. A printer reset (either from software or the control panel) will remove the temporary font, but leave any fonts downloaded as “permanent.”

NOTE

A printer reset may also affect other printer settings. Refer to your printer *Operator’s* manual for details.

Special Information for Mouse Users

You can use the left mouse button to select any function label. Within the Font Window, a left button click in the ID# or P/T columns performs the same function as the NEXT VALUE function key. A left click anywhere else in the Font Window will select (or unselect) the font on that line.

When a prompt is displayed that requires a response, a left click with the mouse pointer just after the prompt acts as a <return> () response. A left click on a “(y)” or “(n)” when they appear on a displayed prompt, gives a Yes or No response.

To activate a function label, position the mouse on the key and left click once.

To scroll through the Font Window, move the cursor to the desired half (upper or lower) of the scroll bar and click or press the left button. (The scroll bar runs along the right edge of the Font Window.)

Using FontLoad Without a Hard Disk

As we have mentioned throughout this guide, we recommend using FontLoad with a hard disk. If you must run from diskettes only, here are a few guidelines:

- Remember that FontLoad can only read fonts from one source per session. This means that you are limited to the font files you can fit on one diskette for each session of FontLoad.
- FontLoad must be able to **write** the font table, FONT_TAB.DTA on the **same diskette** as the font files. The diskette cannot be write protected, and must have enough room for the file. Note that all Hewlett-Packard font product diskettes **are** write protected, so you will have to copy your fonts onto a new diskette, leaving room for the font table file (approximately 2 Kbytes).
- If you want to download soft fonts from more than one diskette, you should quit FontLoad each time you want to change sources.

In Case of Difficulty

If you run into a problem using FontLoad, use the troubleshooting checklist to help you find the cause.

Troubleshooting Checklist

To use this checklist, start at question 1 and step your way through, making sure you can answer "NO" to each question before proceeding to the next.

1. Are you having difficulty loading FontLoad?

NO → go to question 2.

YES → review "Starting FontLoad" page 10, and check the following:

- Make sure that you are typing the command FLOAD. If you are not in the directory where FLOAD.EXE is located, you should type the correct path before the FLOAD command.
- Make sure that your computer's operating system is version 2.1 or later (for MS-DOS).
- Make sure that your computer has at least 256 Kbytes of RAM (memory)
- If you are running under MS-Windows the file FLOAD.PIF must reside in the same directory as FLOAD.EXE file. (See Page 10. Refer to your MS-Windows manual for more information).
- If you are running on an os/2 system, make sure you are running under DOS mode.
- If you are running on a monochrome display system and are having difficulty viewing the screen, try running FontLoad with the /M command. (See page 10.)

2. Is there an error message displayed on the FontLoad screen?

NO \implies go to question 3.

YES \implies check the following:

- Try to determine the cause of the error. If it is a FontLoad message (displayed on the message line), follow the instructions within the message.
- If the error message "There are too many fonts in this directory" appears, you must separate your fonts into smaller directories. (See page 29).
- If you are running a parallel printer and you see the message "Error- Cannot download font," check your AUTOEXEC.BAT file (or if running under the DOS mode of os/2, the OS2INIT.COM file) to ensure that the command line >MODE LPT#: , , p is present and correct. (See Page 9).
- If it is an operating system error message (displayed within the Font Window - such as "Abort, Retry, Ignore?") The most likely cause is a disk error on one of the diskette drives (refer to your operating system manual). If possible, correct the problem and press R to retry.
- To "refresh" the screen and clear the operating system message, press the HELP function key (**F7**), then press EXIT HELP (**F8**) to return to the main screen. The operating system error message should be gone.

3. Is there an “error 20” (memory overflow) displayed on the printer’s front panel?

NO ⇒ go to question 4.

YES ⇒ you are attempting to download more fonts than the printer’s memory can hold. Check the following:

- Check the “printer memory required” line on the bottom of the screen to be sure you are not exceeding the total available **user** memory of your printer. Note that not all the printer’s memory is available for downloading. A typical printer that has 500 Kbytes of total memory may have only about 390 Kbytes available for fonts.
- You can recover from the “error 20” message by pressing the **[ESC]** (ESCAPE) key on the computer, then **CONTINUE** on the printer’s control panel. When FontLoad finishes processing the current font it will display:

Download of font(s) interrupted.

This action will keep all the soft fonts that were successfully downloaded prior to the error message. The remaining fonts on the download list will not be sent.

NOTE

The last font (the one that was downloading when the error occurred) will not be present in the printer, even though an asterisk (*) appears on that font line.

After recovering from the error 20 message, you can continue from there, using only the fonts that were downloaded successfully, or remove all fonts from the printer and start over (explained below).

- If you were **unintentionally adding** to fonts that were already downloaded in the printer, you may want to remove all downloaded fonts and start FontLoad over again. You can remove all **temporary** fonts by resetting the printer. To be certain there are no **permanent or temporary** fonts presently in memory, power the printer **OFF** then **ON** again.

4. Does the FontLoad program seem “hung” (stuck at some point)?

NO → If you are experiencing a problem using FontLoad that is not described here, see “Calling for Help,” below.

YES → check the following:

- Verify that the program is not working on a task. (Some processes, such as downloading fonts, can take up to several minutes.) Check for some sign of activity, either on your disk drive or on the printer’s control panel.
- Make sure your “Destination” is correct (see “Verify your printer device file”, page 9).
- Check your printer to be sure it is accessible (power ON, on-line, no error messages displayed, READY indicator on, interface cables securely connected). If printing to a spooler, exit to the operating system to start the printer.
- Have you entered an illegal setup filename? (refer to your operating system manual for more information).
- If running in the DOS mode of os/2, make sure the MODE command is in the OS2INIT.COM file, and not in the AUTOEEXEC.BAT file. See page 9.
- After checking the above, if FontLoad is still “hung,” try pressing the ESCAPE key to recover. If this does not work, type [CTRL] C or re-boot to quit FontLoad. Now run FontLoad and try again.

Calling for Help

If you try all the suggestions given here, and you still are in need of assistance, you can call the authorized HP dealer where you purchased your soft fonts.

Hewlett-Packard also offers support through the LaserJet Assist Service. A customer assistance operator will offer advice to help solve your technical printer operation problems. The “hotline” number is: 1-208-323-2551 (available 7 AM to 4 PM MST).

This section of your *User's Guide* is provided to help clarify usage of the various commands and features available in the FontLoad utility. We will start with a detailed map explaining the FontLoad screen (this page). This is followed by a description of each of FontLoad's function keys (page 39). Use this section to help clarify usage of the utility, or to refresh your memory at a later date.

The FontLoad Screen

Upon entering FontLoad, you will see the screen shown in Figure 1:

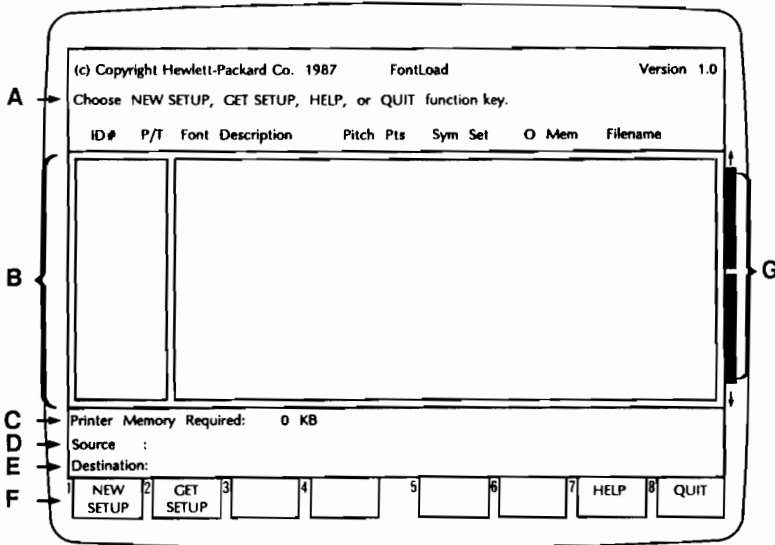


Figure 3. The FontLoad Screen

A: The Message Line

Whenever FontLoad needs to communicate with you, it uses this area of the screen. Watch the Message Line for important operator messages and prompts.

B: The Font Window

A complete listing of all available soft fonts **within the directory you specify** will be displayed here. You can move the cursor around this window, selecting fonts, specifying ID numbers and permanent or temporary status.

For each available font, the following is displayed:

- **ID#**: This field, reserved for font ID numbers, is blank when the fonts are first listed. FontLoad will assign and fill in ID numbers as you select fonts. See "Specifying the Font ID" on page 16 for more information.
- **"P/T"** (permanent or temporary): This column displays either a P (permanent) or a T (temporary) status for the font shown on that line. See "Permanent or Temporary Status" on page 17 for more information.
- **"Font Description"**: Under this column will be a descriptive name for each font (such as "Helv italic").
- **"Pitch"**: This column shows the pitch of the font on that line. This will either be a number (in characters-per-inch), or the word "Prop" (for "proportional spacing").
- **"Pts"** (point size): This refers to the height of the characters within each font. There are 72 points-per-inch.
- **"Sym Set"** (symbol set): This identifies the set of characters associated with this font. Two of the most commonly used symbol sets are ASCII and Roman-8.
- **"O"** (orientation): Orientation is the direction of the print on the page. Some fonts print in portrait (P) orientation with text printed across the width of the page, some print in landscape (L), with text running across the length of the page.
- **"Mem"** (memory): This column shows you approximately how much space each font will require within the printer's memory. The number stated is in kilobytes, thus, a 14 means 14000 bytes of memory usage.
- **"Filename"**: This is the actual filename of the font as it is stored in the directory you have specified.

C: The Memory Required Line

This line displays the approximate amount of printer memory that will be required to store the downloaded fonts that you have currently selected. The value shown is in kilobytes, and is updated every time a font is selected or "unselected." It is good practice to monitor this line before each download to be certain you will not overflow your printer's memory with your choice of fonts.

D: The Source Line

When you enter FontLoad, you will be prompted to provide a path-name where the program is to search for soft font files. The path for the current session will be displayed on this line.

E: The Destination Line

FontLoad will ask you where to send its output. Normally, you will want this line to show your "printer device file." Refer to "Verify your printer device file" on page 9.

F: The Function Keys

Much of the control over FontLoad are carried out through use of the function keys. Refer to the "Quick Reference Pages" at the back of this guide for a description of each key.

G: The Mouse Scroll-Bar

Position the mouse cursor on this bar to scroll through the font listing. Just move the mouse cursor to the upper or lower half of the bar and click or press the left mouse button.

The Function Keys

Use this section of the guide as a handy reminder of the FontLoad function keys. The short portion of the following function key descriptions (in bold type) are also contained on the second help screen within FontLoad. You can access this screen any time the HELP function label is displayed.

Download Keys:

The following five function labels appear after FontLoad creates (or updates) the font table and displays all available fonts in the Font Window.

F1

**SELECT
FONT**

Selects or unselects the indicated font. When you press this key, FontLoad highlights the font on the line where the cursor is positioned, assigning the font ID, and selecting it for downloading. By pressing the key a second time you can unselect that font (if that font has not been downloaded).

*** See pages 15 and 17 for more information. ***

F2

**NEXT
VALUE**

Changes the indicated field to the next available value. For example, If the cursor is over the "P/T" (permanent/temporary) column, and the value currently shown is "P," pressing NEXT VALUE will change it to a "T." In the ID# column, pressing NEXT VALUE increments the font ID to the next available number (successor to the highest ID already assigned).

*** See pages 16-17 for more information. ***

F3

DOWNLOAD
FONTS

Downloads the selected fonts to the designated device. If the device name shown is correct for your printer, and your printer is on-line and ready, this starts the downloading process. FontLoad checks the Font Window for duplicate ID numbers, then asks if you want a printer listing of your downloaded fonts.

*** See page 18 for more information. ***

F4

CHAR
WIDTHS

Prints character width tables for selected fonts. If the "destination" line shown on the screen is the correct device name for your printer, then this technical font data will be printed. The printer uses the Line Printer internal font. When completed, the printer is automatically reset to the factory default font.

If you have substituted a valid disc filename as the destination, the character width tables will be sent there (in ASCII format).

*** See page 21 for more information. ***

F6

SETUP
KEYS

Accesses the setup keys menu. The setup keys are where you go to save a setup file, start a new FontLoad setup, or get a previously saved setup file.

*** See page 41 for more information. ***

Setup Keys:

These four function labels appear when you choose SETUP KEYS (F6) from the download menu.

F1

NEW
SETUP

Begins a new download setup. This function label appears at F1 when FontLoad is first entered and whenever you press the SETUP KEYS function key. You will be asked for the name of the source directory (font directory) and the printer device file (destination). The font table is updated and all fonts present in the directory are listed on the screen.

*** See pages 12-13 for more information. ***

F2

GET
SETUP

Gets a previously saved download setup. Use this key if you have previously created a setup file using FontLoad, and want to access it again to make additions or modifications. You will be asked if you want to send FontLoad output to a new destination.

*** See pages 12-13 for more information. ***

F3

SAVE
SETUP

Saves the current download setup. This feature allows you to re-use your current download configuration as often as you wish, without going through the font selection process each time. You will be asked for a filename to save to, and given the option of printing a listing of your setup file configuration

*** See page 19 for more information. ***

F6

OTHER
KEYS

Accesses the download menu. This is where you go to select and download your fonts to the printer. This menu also allows you to print the character width tables.

*** See page 39 for more information. ***

Global Function Keys

These function labels are always present when function labels are displayed.

F5

SHOW
SELECTED

On: Lists only selected fonts. Off: Lists all fonts. This key acts as a Font Window “toggle.” When ON (indicated by an asterisk “*” within the function label), only the soft fonts you have already selected are listed in the Font Window. When OFF (no asterisk displayed), the Font Window lists all the fonts available in the directory you specified as the “source.”

*** See page 17 for more information. ***

F7

HELP

Accesses the first and second help screens. The help screens are useful on-line tools to assist you in using FontLoad. The first screen gives some general FontLoad information; the second screen gives brief descriptions each FontLoad function label. You can access the help screens any time this function label is displayed.

F8

QUIT

Terminates the FontLoad utility. If you have selected fonts but have not downloaded or saved them to a setup file, FontLoad asks you for verification before quitting. If you need to quit the utility when the QUIT function label is not displayed, type **[CTRL] C**.

Index

A

- about this manual 2
- adding FLOAD to a "batch file" 20
- adding FontLoad to PAM MENU 10
- ASCII symbol set 9
- assigning duplicate ID numbers 27, 31
- assigning ID numbers 16, 27
- AUTOEXEC.BAT 20

B

- back-up copies 8
- batch file, using 20
- before you start 8

C

- calling for help 35
- change P/T status 17
- changing assigned ID number 16
- CHAR WIDTHS function key 21, 40
- character height (point size) 4
- character width tables 21, 40
- checklist, troubleshooting 32
- choosing font directory pathname 13
- choosing GET SETUP 12, 26
- choosing NEW SETUP 12, 22
- clearing DOS error message 33
- column, (Font Window):
 - ID 16, 37
 - P/T 17, 37
- command line, DOS 10, 20
- command:
 - COPY 8
 - DISKCOPY 8
 - FLOAD 10, 20, 32
 - GET SETUP 12, 26, 41
 - MKDIR 8
 - NEW SETUP 12, 41
- common printer device names 14
- computer:
 - memory 7, 32
 - operating system 7, 32
- CONTINUE- printer key 34
- copies, back-up 8
- COPY command 8
- copy to hard disk 8
- copying font files 8
- creating batch file 20
- creating setup files 19, 29
- CTRL C 11, 35, 42
- customer assistance 35
- customizing print environments 29

D

- default ID number 16
- deleting temporary fonts 20, 34
- destination file 13
- destination line 38
- destination printer device file 9, 14
- difficulty loading FontLoad 32
- directory pathname 32, 10
- directory:
 - FONTS 9, 13
 - UTIL 20, 10
- disc space 28
- DISKCOPY command 8
- diskette, utility 8
- diskettes - using FontLoad from 31
- display selected fonts 17, 42
- DOS command line 10, 20
- DOS COPY command 8
- DOS DISKCOPY command 8
- DOS error message 33
- DOS MKDIR command 8
- DOS version 7, 32
- DOWNLOAD FONTS key 18, 40
- download menu, access 41
- download setup file, using 19, 20
- download process, interrupting 18, 34
- downloading selected fonts 18
- downloading (definition) 4,
- duplicate ID numbers, assigning 27, 31

E

- entering FontLoad 10
- error 20 - (memory overflow) 18, 34
- error message, DOS 33
- Esc E 20
- ESC key (ESCAPE key) 11, 34, 35
- EXIT HELP function key 33
- exiting FontLoad 11, 42

F

file:

- batch (.BAT) 20
- creating setup 19
- destination 13
- FLOAD.EXE 32
- font setup 6, 19
- font table 26, 28, 31
- printer device 9, 14, 26
- saving setup 19, 27
- SuperFont (definition) 4
- using setup 20

filename:

- font 4, 37
- illegal DOS 35

files:

- copying font 8
- making several setup 29

first help screen 42

FLOAD command 10, 20, 32

FLOAD.EXE file 32

FLOAD.PIF 10, 32

font directory pathname, choosing 13

font directories, managing large 29

font filename 4

font files, copying 8

font ID number 4, 16, 37

font listing, scrolling through 38

font listing 18, 24

font selection screen 15

font selections, saving 19

font setup file 6, 19

font status 17

font table file 26, 28, 31

font table 13, 26

Font Window toggle 42

Font Window 15, 37

FONTSDIR directory 9, 13

fonts:

- download 18, 40
- listing 18, 24
- permanent - temporary 4
- removing temporary 20, 29, 34
- selecting 15,
- show selected 42
- unselecting 17, 27
- using temporary 29

FONT_TAB.DTA 13, 28, 31

function key:

- CHAR WIDTHS 21, 40
- DOWNLOAD FONTS 18, 40
- EXIT HELP 33
- GET SETUP 12, 26, 41
- HELP 12, 33, 42
- NEW SETUP 12, 41
- NEXT VALUE 16, 17, 39
- OTHER KEYS 41
- QUIT 12, 42
- SAVE SETUP 19, 41
- SELECT FONT 15, 39
- SETUP KEYS 19, 40, 41
- SHOW SELECTED 17, 42

function keys:

- descriptions 39
- global 42
- Using 12

G

GET SETUP function key 12, 26, 41

getting started 8

global function keys 42

H

hard disk, copy to 8

height, character 4

HELP function key 12, 33, 42

help screens 42

help, calling for 35

hints, FontLoad program 28

hotline number 35

"hung" FontLoad program 35

I

ID column 16

ID number:

- assigning duplicate 27, 31
- changing assigned 16
- default 16
- font 4, 16, 37

illegal DOS filename 35

in case of difficulty 32

Initial Directory field (.PIF file) 10, 32

installation (definition) 4

interrupting the downloading process 18, 34

K

key words 4

key, ESCAPE 11, 34, 35:

keys, function 39

L

landscape (L) orientation 37
LaserJet Assist Service 35
list selected fonts 18
listing, fonts 18, 24
loading FontLoad 10

M

MakeFont (definition) 4
making several setup files 29
manual, about this 2
Mem (memory) 37
memory overflow, printer 18, 34
memory required line 15, 34, 38
memory:
 computer 7, 32
 printer 9, 29, 38
 "user" 34
menu, setup keys 41
message line 36
MKDIR command 8
mouse scroll bar 38
mouse users, special information for 30
mouse 7
MS-Windows 7, 10, 32

N

NEW SETUP key 12, 41
NEW SETUP:
 choosing 12
 sample - creating 22
NEXT VALUE function key 16, 17, 39

O

O (orientation) 37
options, using 7
OTHER KEYS function key 41

P

P (permanent) status 4, 37
P/T column 17, 37
P/T status, changing 17
PAM MENU 10
permanent fonts (definition) 4
permanent status 4, 17
personal computer requirements 7, 32
PIF file 7, 10, 32
PIFEDIT 32
pitch 37
point size (definition) 4
port number, printer 9
portrait (P) orientation 37

print environments, customizing 29
printer memory used 9, 29, 38
printer command, reset (Esc E) 20
printer control panel, CONTINUE- 34
printer device file 9, 14
printer memory overflow 18, 34
printer memory required 15, 34, 38
printer operation problems 35
printer port number 9
printer requirements 7
printer reset (control panel) 20, 29, 34
printers supported 7
problem solving 32
program loading 10
prop (proportional spacing) 37
Pts (point size) 37

Q

quick reference pages 36
Quick Start 5
QUIT function key 12, 42

R

/R option 20
Reference Guide 2
reference pages, quick 36
refresh screen 33
removing temporary font 20, 29, 34
required line, memory 15, 34, 38
requirements:
 computer 7
 printer 7
reset printer command 20, 29, 34
retrieving download setup 41

S

sample - creating new setup 22
sample - modifying setup file 25
save download setup 41
SAVE SETUP function key 19, 27, 41
saving setup file 19, 27
saving font selections 19
screen:
 font selection 15
 FontLoad 36
 refresh 33
screens, help 42
scroll bar, mouse 38
scrolling through font listing 38
SELECT FONT key 15, 39
selecting fonts 15

setup file:

- creating 19, 29
 - sample - modifying 25
 - saving 19, 27
 - using 20
- SETUP KEYS function key 19, 40, 41
- setup keys menu 41
- setup file, using download 19, 20
- SHOW SELECTED key 17, 42
- soft font files, storing 8
- soft fonts supported 7
- source line 38
- special information for mouse users 30
- specifying font ID 16
- starting FontLoad 10
- storing soft font files 8
- SuperFont file (definition) 4
- supported:
- printers 7
 - soft fonts 7
- Sym Set (symbol set) 37
- symbol set, ASCII 9

T

- T (temporary) status 37
- table, font 13, 26
- tables, character width 21, 40
- temporary font, removing 20, 29, 34
- temporary fonts (definition) 4
- temporary status 17
- troubleshooting checklist 32

U

- unselecting fonts 17, 27
- usage, printer memory 9, 29, 38
- user memory 34
- using FontLoad from diskettes 31
- using FontLoad options 7
- using FontLoad without a hard disc 31
- Using FontLoad 11
- using function keys 12
- Using MakeFont Guide 2
- using setup file 20
- using temporary fonts 29
- UTIL directory 10, 20
- utility diskette 8
- utility (definition) 4

W

- What is FontLoad 6
- What you do with FontLoad 6
- What you need to use FontLoad 7

NOTE

NOTE

NOTE

NOTE

the 1990s, the number of people in the UK who are aged 65 and over has increased from 10.5 million to 13.5 million, and the number of people aged 75 and over has increased from 4.5 million to 6.5 million (Office for National Statistics 2000).

There is a growing awareness of the need to address the needs of older people, and the need to ensure that the health care system is able to meet the needs of older people. The Department of Health (2000) has set out a strategy for the health care system to meet the needs of older people. The strategy is based on the following principles:

- To ensure that older people have access to the same range of health care services as younger people.
- To ensure that older people are able to live independently for as long as possible.
- To ensure that older people are able to participate in decisions about their care.
- To ensure that older people are able to live in their own homes for as long as possible.

The strategy is based on the following principles: to ensure that older people have access to the same range of health care services as younger people; to ensure that older people are able to live independently for as long as possible; to ensure that older people are able to participate in decisions about their care; and to ensure that older people are able to live in their own homes for as long as possible.

The strategy is based on the following principles: to ensure that older people have access to the same range of health care services as younger people; to ensure that older people are able to live independently for as long as possible; to ensure that older people are able to participate in decisions about their care; and to ensure that older people are able to live in their own homes for as long as possible.

The strategy is based on the following principles: to ensure that older people have access to the same range of health care services as younger people; to ensure that older people are able to live independently for as long as possible; to ensure that older people are able to participate in decisions about their care; and to ensure that older people are able to live in their own homes for as long as possible.

The strategy is based on the following principles: to ensure that older people have access to the same range of health care services as younger people; to ensure that older people are able to live independently for as long as possible; to ensure that older people are able to participate in decisions about their care; and to ensure that older people are able to live in their own homes for as long as possible.

The strategy is based on the following principles: to ensure that older people have access to the same range of health care services as younger people; to ensure that older people are able to live independently for as long as possible; to ensure that older people are able to participate in decisions about their care; and to ensure that older people are able to live in their own homes for as long as possible.

The strategy is based on the following principles: to ensure that older people have access to the same range of health care services as younger people; to ensure that older people are able to live independently for as long as possible; to ensure that older people are able to participate in decisions about their care; and to ensure that older people are able to live in their own homes for as long as possible.

