

HP 3000 Commercial Systems
HP 3000 Software Installation Manual

For MPE V Releases
(beginning with Release 3P)



HP Part No. 32033-90039
Printed in U.S.A. May 1994

R3419

NOTICE

The information contained in this document is subject to change without notice.



HEWLETT-PACKARD MAKES NO WARRANTY OF ANY KIND WITH REGARDS TO THIS MATERIAL, INCLUDING, BUT NOT LIMITED TO, THE IMPLIED WARRANTIES OF MERCHANTABILITY AND FITNESS FOR A PARTICULAR PURPOSE. Hewlett-Packard shall not be liable for errors contained herein or for incidental or consequential damages in connection with the furnishing, performance, or use of this material.

Hewlett-Packard assumes no responsibility for the use or reliability of its software on equipment that is not furnished by Hewlett-Packard.

This document contains proprietary information which is protected by copyright. All rights are reserved. No part of this document may be photocopied, reproduced or translated to another language without prior written consent of Hewlett-Packard Company.

Copyright © 1984 - 1994 by HEWLETT-PACKARD COMPANY
SST/Software Services and Technology Division
8000 Foothills Boulevard
Roseville, CA 95747-9987 USA

CONVENTIONS USED IN THIS MANUAL

NOTATION	DESCRIPTION
nonitalics	Words in syntax statements which are not in italics must be entered exactly as shown. Punctuation characters other than brackets, braces, and ellipses must also be entered exactly as shown. For example: EXIT;
<i>italics</i>	Words in syntax statements which are in italics denote a parameter which must be replaced by a user-supplied variable. For example: CLOSE <i>filename</i>
[]	An element inside brackets in a syntax statement is optional. Several elements stacked inside brackets means the user may select any one or none of these elements. For example: $\left[\begin{array}{l} A \\ B \end{array} \right]$ User <i>may</i> select A or B or neither.
{ }	When several elements are stacked within braces in a syntax statement, the user must select one of those elements. For example: $\left\{ \begin{array}{l} A \\ B \\ C \end{array} \right\}$ User <i>must</i> select A or B or C.
...	A horizontal ellipsis in a syntax statement indicates that a previous element may be repeated. For example: [, <i>itemname</i>] ... ; In addition, vertical and horizontal ellipses may be used in examples to indicate that portions of the example have been omitted.
	A shaded delimiter preceding a parameter in a syntax statement indicates that the delimiter <i>must</i> be supplied whenever (a) that parameter is included or (b) that parameter is omitted and any <i>other</i> parameter which follows is included. For example: <i>itema</i>  <i>itemb</i> [, <i>itemc</i>] means that the following are allowed: <i>itema</i> <i>itema, itemb</i> <i>itema, itemb, itemc</i> <i>itema, , itemc</i>
□	When necessary for clarity, the symbol □ may be used in a syntax statement to indicate a required blank or an exact number of blanks. For example: SET[(<i>modifier</i>)]□(<i>variable</i>);

HP Computer Museum
www.hpmuseum.net

For research and education purposes only.

underlining

When necessary for clarity in an example, user input may be underlined. For example:

NEW NAME? ALPHA



In addition, brackets, braces, or ellipses appearing in syntax or format statements which must be entered as shown will be underlined. For example:

LET var[[subscript]] = value



shading

Shading represents inverse video on the terminal's screen. In addition, it is used to emphasize key portions of an example.



The symbol  may be used to indicate a key on the terminal's keyboard. For example,  indicates the carriage return key.

 char

Control characters are indicated by  followed by the character. For example,  Y means the user presses the control key and the character Y simultaneously.

Contents

1. Introduction	
Introduction	1-1
Installation Process Overview	1-2
2. Verify the System Version	
Verifying the System Version	2-1
3. Installation Preparation	
System Setup	3-1
Disable UDCs	3-2
System Configuration	3-3
4. Update Existing Operating System	
Ensure Free Space on the System Disk	4-1
MPE V Shutdown	4-1
Update from the FOS Tape	4-2
5. Restore the Files	
Start AUTOINST	5-1
Restore the FOS Tape	5-1
Restore the SUBSYS Tape	5-2
Create the Accounting Structure	5-3
Stream Installation Files	5-3
6. Install/Update Non-Autoinstall Products	
HP WordServices	6-1
HP Word/3000	6-1
HP File/Library	6-3
Install or Update HP DeskManager	6-3
HP Telex II	6-4
HPOffice Connect to PROFS	6-4
HPOffice Connect to DISOSS	6-5
New DS Databases	6-5
Verify Database Version	6-5
Create New Database	6-6
HP Predictive Support	6-7
HP Resource Sharing	6-7
HP Information Access Server	6-7

7. The DUS and Coldload Tapes	
Restart AUTOINST	7-1
Create the DUS Tape	7-1
Create the Coldload Tape	7-2
Coldstart the System	7-3
8. Bring the System Up	
Create 64/68/70 Diagnostics	8-1
Convert IMAGE Databases	8-1
Install NS/3000 & OFFICESHARE LAN/3000	8-1
Configure Special Products	8-2
System Startup	8-3
A. Series 64/68/70 Diagnostics	
Creating Diagnostics on the HP 2647F	A-1
Format the Disk	A-1
Run FLDCOPY	A-2
Creating Diagnostics on the HP 150	A-5
Format the Disk	A-5
Run FLDCOPY	A-5
B. Error Messages and Warnings	
AUTOINST Messages	B-1
Error Messages	B-1
Warning Messages	B-8
System Errors	B-11
Out of Disk Space on LDEV1	B-11
Out of Memory or Out of BANK 0	B-12
C. Worksheets	
HP 3000 MPE V INSTALLATION CHECKLIST	C-4
D. Running SYSDUMP	
Introduction	D-1
Running SYSDUMP	D-1

Introduction

Introduction

This manual provides procedures for new HP 3000 software. Error messages and resolutions (see appendix B, "Error Messages and Warnings"), and a tear-out worksheet (see appendix C, "Worksheet") are provided in the appendices. Variations for procedures or displays for the Series 37 computer have been specified.

This manual also provides the steps necessary to install any purchased software subsystems (SUBSYS) on a new machine. The length of time specified for any procedural step is an estimate. Read this document thoroughly to familiarize yourself with the process.

Note When installing HPWORD, HP DeskManager, or HP TELEX II for the first time, it is recommended that you contact your HP Software Engineer for assistance with database configurations.

If there has been any activity on the system, and there are files you wish to save, be sure to do a full system backup before beginning this procedure. The installation will take approximately three to four hours to complete, depending on how many products have been purchased, and what type of computer and peripherals are being used. Additional time may be needed to configure new data communications products.

The following storage media will be necessary:

- A Fundamental Operating System (FOS) tape, supplied by Hewlett-Packard.
- An optional software subsystem (SUBSYS) tape, supplied by Hewlett-Packard.
- One blank 2400-foot tape for the coldload medium. (A second tape may be necessary.)
- One blank tape for the Diagnostic Utility System (DUS) tape.
- One floppy disk to create the Fault Locating Diagnostics (FLD), if using a Series 64/68/70.

Note If you are running a multi-volume cartridge tape operation use all 600 foot tapes throughout the installation, or a 600-foot cartridge before you use a 150-foot cartridge. Although Hewlett-Packard purchasable software for MPE V is *not available* on DAT, you may use DAT as your COLDLOAD and SYSDUMP media.

A few purchased software products require manual installation. The procedures for these are supplied in this manual.

It is advised that you consult your Software Engineer before beginning the installation if you are installing HPWORD/3000, HP DeskManager/3000, HP TELEX II, or any data communications product. He will assist you with database and system configuration needs.

Installation Process Overview

Caution This manual assumes that the *HP 3000 Fundamental Operating System Installation Manual* (P/N 32033-90046) has been used to perform the initial RELOAD operation.

The Fundamental Operating System (FOS) and the optionally purchased subsystem (SUBSYS) tapes contain software that is shipped from the factory.

The FOS tape contains all software supplied as a standard part of an HP 3000 computer system. This includes the MPE operating system, system utilities, online diagnostics, and various data-handling subsystems (e.g. TurboIMAGE, KSAM, QUERY).

The SUBSYS tape contains the HP software products purchased separately from the FOS.

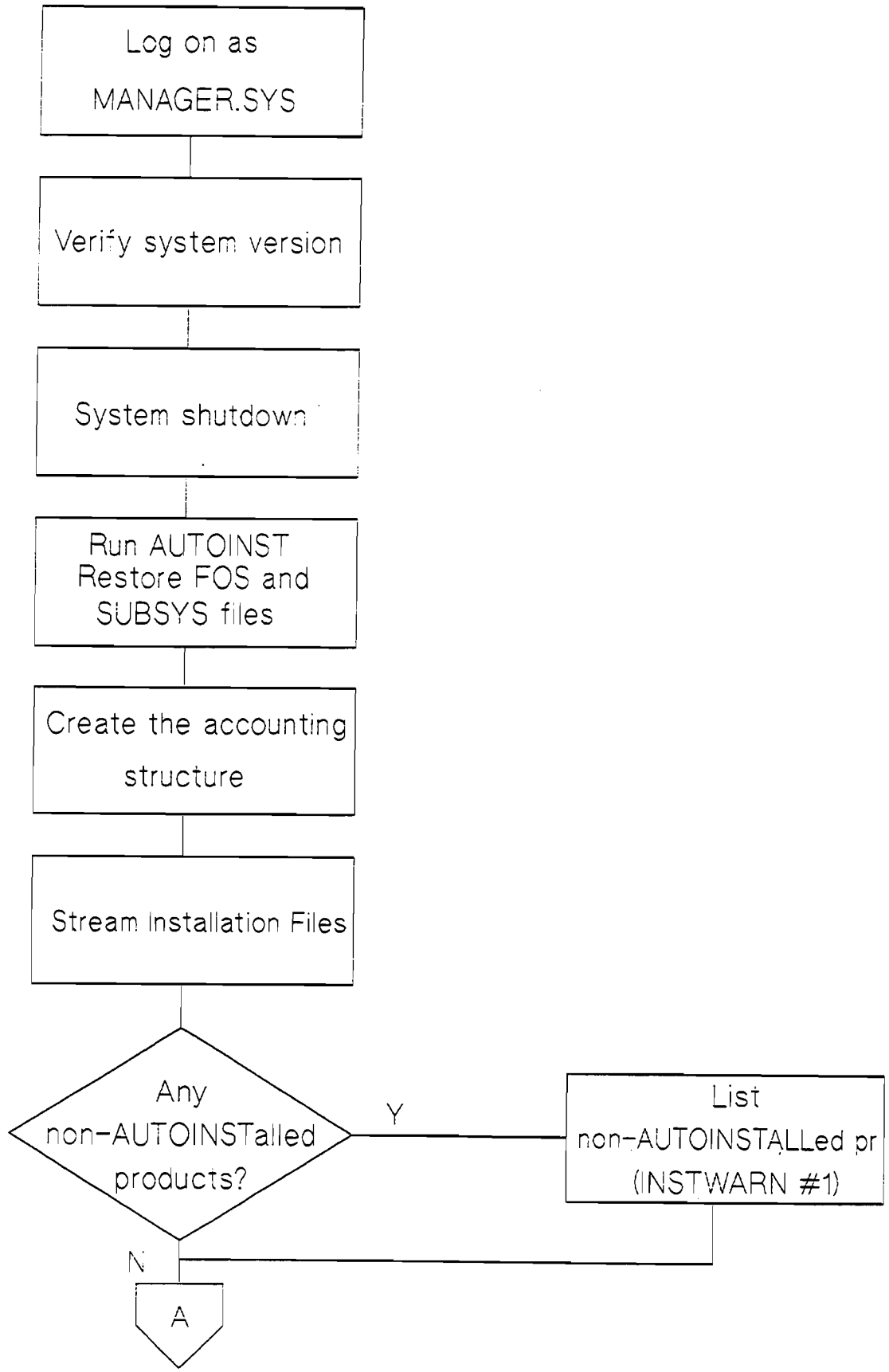
It is necessary to determine the base system configuration, and make changes (using the program SYSDUMP), as required, to accommodate specific product requirements. Note that any device configured on the base system must be physically connected to the CPU.

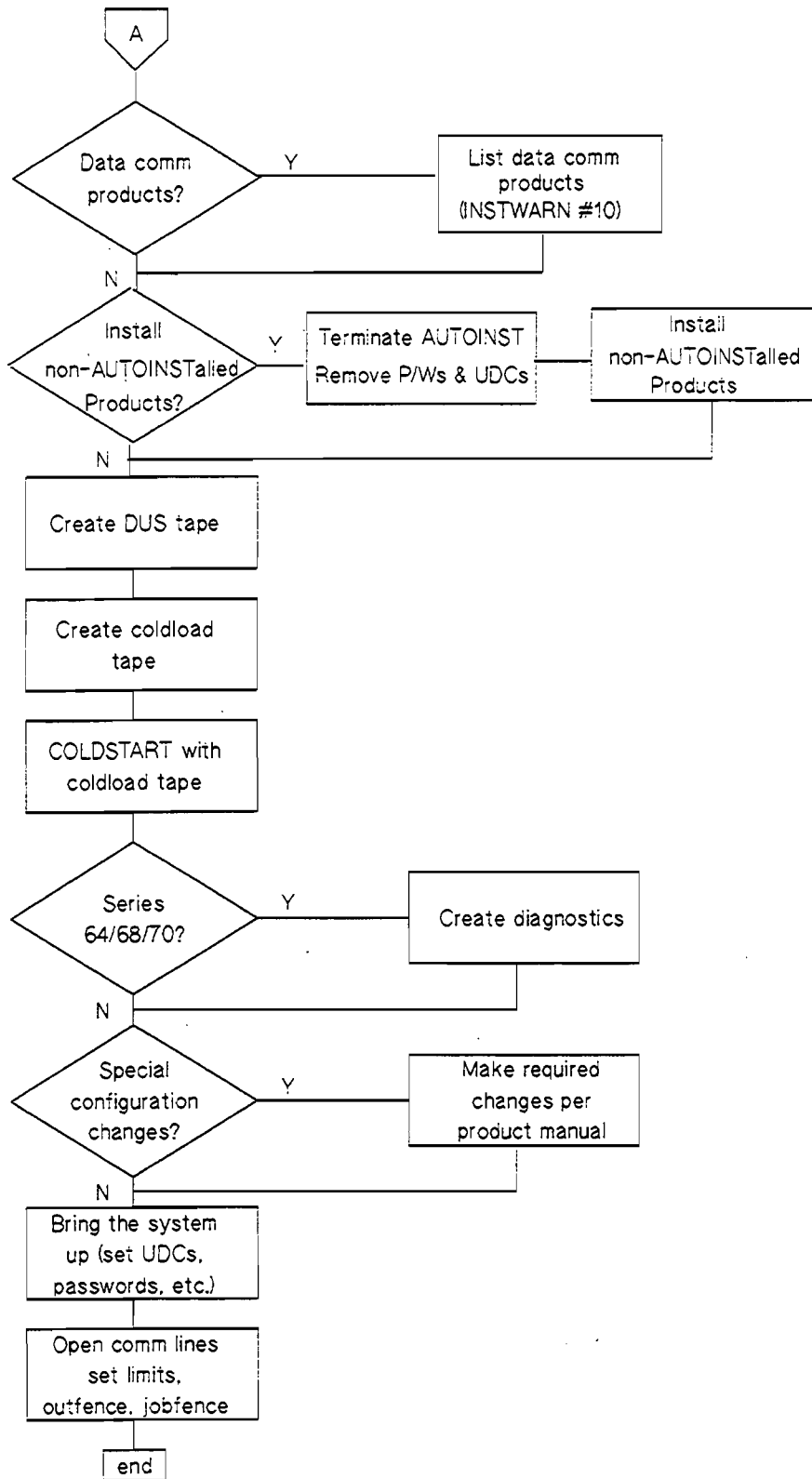
The program AUTOINST.PUB.SYS is on the FOS tape. This program restores the user files from the FOS tape, and streams and monitors a set of job streams which creates the accounting structure required by HP software.

AUTOINST restores the contents of the SUBSYS tape. If you have not purchased any SUBSYS products, the installation is complete.

There are several products which AUTOINST cannot fully install. These products require special handling, as described in chapter 4, "Install Non-AUTOINSTalled Products".

The data flow diagram on the following page provides a step-by-step description of this process.





Verify the System Version

Verifying the System Version

1. If there are any files on the system, that you wish to save, please make certain that the system has been properly backed up before continuing.

2. Log on and enter:

```
:HELLO MANAGER.SYS,PUB  
:ALTUSER MANAGER;HOME=PUB
```

3. Use the SHOWME command to verify the current version of the operating system:

```
:SHOWME
```

The system will display a message similar to the following:

```
USER: #S1,MANAGER.SYS,PUB          (NOT IN BREAK)  
MPE VERSION: HP32033x.nn.nn. (BASE x.nn.nn).  
CURRENT: FRI, JUL 21, 1989, 7:25 AM  
LOGON:   FRI, JUL 21, 1989, 6:10 AM  
CPU SECONDS: 9          CONNECT MINUTES: 75  
$STDIN LDEV: 20          $STDLIST LDEV: 20
```

4. Record the version number (*x.nn.nn*) on the worksheet.



Installation Preparation

Advise users in advance of the planned system down time. If you have not done a full system backup and tape verification as indicated in chapter 1, "Introduction", do so now. The installation will take from two to four hours to complete, depending on the number of SUBSYS products purchased and the type of computer and peripherals being used.

System Setup

1. Enter the following commands:

```
:CONSOLE 20
:LIMIT 1,1
:JOBFENCE 7
:SHOWJOB
```

2. If there are any users on the system, issue a warning using the WARN@ command, asking users to log off. MANAGER.SYS should be the only session logged on the system. Abort any jobs or sessions still executing.

```
:ABORTJOB #Jnnn           ** for jobs **
:ABORTJOB #Snnn           ** for sessions **
```

3. AUTOINST requires the group USL be purged prior to beginning the installation. Store them to tape and keep for archival purposes, then purge the group as follows:

```
:PURGEGROUP USL
```

4. If SYSSTART.PUB.SYS exists on the system, rename the file and record the new name on the worksheet.

```
:RENAME SYSSTART, filename
```

5. Enter the following command to determine if user logging processes are running:

```
:SHOWLOGSTATUS
```

6. Terminate logging processes, as follows:

```
:LOG logid,STOP
```

7. Print out or store to tape any system logfile #s in PUB.SYS, and purge them from the system. This action will free up disk space that may be needed for the installation. Enter the following commands to locate the logfiles:

```
:LISTF LOG#@
:LISTF NML?#@
```

8. Enter the following to determine if spoolfiles are present:

:SHOWOUT SP

Print or store to tape any existing spool files, and purge them from the system.

Note If spoolfiles are not purged from the system, the space they occupy will not be reallocated to free space.

9. Disable data communication products as applicable:

:DSCONTROL ldev;SHUT

:MRJECONTROL SIGNOFF;hostid

:MPLINE ldev,SHUT,NOW

:IMFCONTROL STOP imfconfigfile

:NRJECONTROL STOP;WSID=wsidname

:SNACONTROL STOP;NODE=nodename;TYPE=stoptype

:NSCONTROL STOP

:NETCONTROL STOP

10. If HPINSTFL.PUB.SYS exists on your system, purge it as follows:

:PURGE HPINSTFL.PUB.SYS

Disable UDCs

1. COMMAND.PUB.SYS contains the directory of all UDCs set on your system. If you have any UDCs set, you must disable them before running AUTOINST. To disable your UDCs, save your command file and build an empty command file as follows:

:RENAME COMMAND.PUB.SYS,COMMOLD.PUB.SYS

:BUILD COMMAND.PUB.SYS

:HELLO MANAGER.SYS;HIPRI

You will be reminded to re-enable your UDCs later in the installation

System Configuration

The system configuration may need to be changed to accommodate certain purchased products. Determine the current configuration by running SYSDUMP \$NULL.

- The following depicts the console dialog of SYSDUMP \$NULL. Necessary responses are highlighted. Other prompts require only a RETURN. All SYSDUMP \$NULL worksheet entries are highlighted below. Lines of the dialog that are marked with an asterisk (*) beside them are displayed only if you have data communications products configured on your system.

:SYSDUMP \$NULL

```

ANY CHANGES? Y
SYSTEM ID = HP32033G.00.00.?
MEMORY SIZE = 3072.?
I/O CONFIGURATION CHANGES? Y
LIST I/O DEVICES? Y

```

LOG DEV #	DRT #	U N	C H	T Y	SUB TYPE	TERMINAL TYPE	SPEED	REC WIDTH	OUTPUT DEV	MODE	DRIVER NAME	DEVICE CLASSES
1	<u>DD</u>	0	0	0	9			128	0		HIOMDSC1	DEVICE SYSDISC SPOOL
6	33	0	0	32	4			66	0	S	HIOLPRTO	LP LP2608
<u>7</u>	17	0	0	24	0			128	0		<u>HIOTAPEO</u>	<u>TAPE</u> DDUMP
<u>10</u>	17	3	0	24	0			128	LP	JA	HIOTAPEO	<u>JOBTAPE</u>
20	8	0	0	16	0	10	960	40	20	JAID	HIOTERM1	TERM CONSOLE
21	8	1	0	16	0	10	960	40	21	JAID	HIOTERM1	TERM
22	8	2	0	16	0	10	960	40	22	JAID	HIOTERM1	TERM
23	8	3	0	16	0	10	960	40	23	JAID	HIOTERM1	TERM


```

* LIST CS DEVICES?
LIST DEVICE DEFAULTS?
HIGHEST DRT = 327.?
LOGICAL DEVICE #?
MAX # OF OPEN SPOOLFILES = 50.?
LIST I/O DEVICES?
* LIST CS DEVICES?
TERMINAL TYPE CHANGES?
CLASS CHANGES?
LIST I/O DEVICES?
* ADDITIONAL DRIVER CHANGES?
I/O CONFIGURATION CHANGES?
SYSTEM TABLE CHANGES? Y
CST = 192.?
EXTENDED CST = nnnn.?
DST = 768.?
PCB = nnn.?
I/O QUEUE = 128.?
DISC REQUEST QUEUE = nnn.?
TERMINAL BUFFERS PER PORT = 3.?
SYSTEM BUFFERS = 64.?
SWAP TABLE = nnnn.?
PRIMARY MESSAGE TABLE = nnn.?
SECONDARY MESSAGE TABLE = nn.?
SPECIAL REQUEST TABLE = 20.?
ICS = 1500.?
LOADER SEGMENT TABLE = 16384.?
UCOP REQUEST QUEUE = 50.?
** must be >=8 X PCB **

```

```

TIMER REQUEST QUEUE = 255.?
BREAKPOINT TABLE = 30.?
MAX NUMBER OF USER LOGGING PROCESSES = 2.?
MAX NUMBER OF USERS PER LOGGING PROCESS = 3.?
MISC CONFIGURATION CHANGES?
LOGGING CHANGES?
DISC ALLOCATION CHANGES?
SCHEDULING CHANGES?
SEGMENT LIMIT CHANGES? Y
MAX # OF CONCURRENT RUNNING PROGRAMS = nn.?
MAX CODE SEGMENT SIZE = nnnnn.?.
MAX # OF CODE SEGMENTS/PROCESS = nn.?
MAX STACK SIZE = nnnnn.?.
MAX EXTRA DATA SEGMENT SIZE = nnnnn.?          ** Must = 32764 **
MAX # OF EXTRA DATA SEGMENTS/PROCESS = nnn.?.
STD STACK SIZE = 1200.?
SYSTEM PROGRAM CHANGES?
SYSTEM SL CHANGES?
ENTER DUMP DATE?
ILLEGAL TAPE FILE OPEN PARAMETERS          ** Normal SYSDUMP $NULL **
                                           ** Termination **

ABORT :SYSDUMP.PUB.SYS.%5.%174
PROGRAM ERROR #18 :PROCESS QUIT

PROGRAM TERMINATED IN AN ERROR STATE. (CIERR 976)

```



1. Compare your current system configuration recorded on the worksheet, against the following values. If your configuration does not meet these conditions, note the necessary values on the worksheet.
 - The configured values for the PRIMARY MESSAGE TABLE and SECONDARY MESSAGE TABLE should be greater than or equal to the number of entries in the PCB table.
 - The purchased subsystems listed below require these specific values:

Subsystems	Specific Subsystem Requirements						
	>=255	>=8xPCB					
DISC CACHE/3000							
HPDRAW/3000 HPMAP DSG/3000 ----- HPEASYCHART/3000 ----- HP GRAPHICS CURATOR/3000			>=16384	>=30			
Figure files for HPWORD or TDP/3000			>=16384	>=63			
VISICALC/3000			>=16384				
HP FORTRAN 77/3000			>=16384	>=5			
HP Business BASIC/3000			>=16384	>=5			
HP DESK PLUS			>=16384	>=30			>=250
HP Business Report Writer/V			>=16384	>=64			
DB Change			>=16384				
HP Easytime					>=70	>=20	>=240
<p>DISC REQUEST TABLE = nnn.? ↑</p> <p>SWAP TABLE = nnnn.? ↑</p> <p>MAX CODE SEG SIZE = nnnnn.? ↑</p> <p>MAX # OF EXTRA DATA SEGMENTS/PROCESS = nnn.? ↑</p> <p>PCB = nnn.? ↑</p> <p>MAX # OF CONCURRENT RUNNING PROGRAMS = nn.? ↑</p> <p>EXTENDED CST = nnnn.? ↑</p>							

Subsystem Configuration Specifications Table

2. If your system configuration does not satisfy these requirements, proceed to the appendix, "Running SYSDUMP."

Update Existing Operating System

Ensure Free Space on the System Disk

AUTOINST can require up to 35,000 sectors of free space on the system disk to bring in the system files from the FOS and subsys tapes. Follow the steps below to ensure there is enough free space.

1. Build a dummy file of 35,000 sectors, as follows:

```
:BUILD TAKESPAC;DEV=1;DISC=35000,1,1
```

If there is not enough free space on the system disk, store files to tape and purge them. Other alternatives are presented in appendix E, "Error Messages and Warnings."

2. Purge the dummy file:

```
:PURGE TAKESPAC
```

Caution If you do not ensure that there is enough free disk space, the AUTOINST process will produce a warning message displaying the minimum amount of free space you must have. Failure to ensure you have the minimum disk space required may force you into a reload.

MPE V Shutdown

For MPE version G.01.00 or later, perform the following steps to shut down the system.

1. Shut down the system:

```
CONTROL A  
=SHUTDOWN
```

If the system does not halt within 60 seconds, manually halt the system as follows:

On a Series 37, MICRO 3000, or MICRO 3000/XE:

To shut down the system, enter:

CONTROL B

On all other systems:

To shut down the system, enter:

CONTROL B
->HALT

Update from the FOS Tape

For all versions of MPE, update the operating system as follows:

1. Mount the FOS tape and put the tape drive online.
2. Enter:

->LOAD

3. Respond to the dialog as shown below. (If the DRT number given by the system for LDEV 1 differs from the worksheet entry, use the value from the worksheet.)

WHICH OPTION (COLDSTART/RELOAD/UPDATE)? UPDATE

SYSTEM DISC DRT = xx(MIN=8, MAX=127)|? ** S/39, 4X, 58 **

OR

SYSTEM DISC DRT = xx(MIN=8, MAX=511)|? ** S/37 6X, 70 **

ANY CHANGES? **N**

****WARNING**** AFTER THIS POINT DO NOT INTERRUPT THE STARTUP
PROCESS UNTIL AFTER THE MESSAGE " WELCOME " APPEARS

DIRECTORY MAINTENANCE COMPLETED
LOADING OF SYSTEM FILES IN PROGRESS
LOADING OF SYSTEM FILES COMPLETED
PART 1 OF 6 COMPLETED - MEMORY RESIDENT TABLES SET UP
PART 2 OF 6 COMPLETED - SL BINDING
PART 3 OF 6 COMPLETED - SYSTEM I/O PROCESS CREATION
PART 4 OF 6 COMPLETED - DRIVER LOADING
PART 5 OF 6 COMPLETED - DISC RESIDENT TABLES SET UP
PART 6 OF 6 COMPLETED - SYSTEM PROCESS CREATION

BANK 0 DEPENDENT MEMORY USED -*xxxx*

On a Series 37, MICRO 3000, or MICRO 3000/XE:

Respond to the date prompt as requested. (If you do not respond Y or N within 60 seconds, the system by default, assumes the displayed time and date to be correct.)

day,date,time? (Y/N)

If N, respond to the prompts as indicated (use 24 hour time).

On all other systems:

Respond to the date prompt as requested.

DATE (M,D,Y)? *mm/dd/yy*
TIME (H:M)? *hh:mm* **** 24 hour format ****

Confirm the date and time as prompted.

4. The system will be up and running and will display the following message:

THE MPE OPERATING SYSTEM HAS JUST BEEN INSTALLED.
TO BEGIN THE INSTALLATION OF HP-SUPPORTED SOFTWARE,
ENTER:

:RUN AUTOINST.PUB.SYS

Please continue with chapter 5, "Restore the Files."

Restore the Files

The AUTOINST program sets up the environment necessary for the installation and will install most HP-purchased software products.

Start AUTOINST

1. Enter:

:RUN AUTOINST

Restore the FOS Tape

1. Mount the FOS tape as requested:

MOUNT THE FOS TAPE AND PUT THE TAPE DRIVE ONLINE.
THE FILES FROM THE FOS TAPE WILL NOW BE RESTORED.

**** PLEASE STAND BY ****
THE FOS TAPE FILES ARE BEING RESTORED.

2. The tape drive will be active, then inactive for about fifteen minutes while the restore file is being verified. When the tape drive becomes active and the files have been restored, the following message will be displayed:

THE FILES FROM THE FOS TAPE WERE SUCCESSFULLY RESTORED.

3. Dismount the FOS tape.

Restore the SUBSYS Tape

When the restore of the FOS files is complete, AUTOINST prompts you, as follows:

```
HAS A SUBSYS TAPE BEEN INCLUDED IN YOUR
INSTALLATION PACKAGE (Y/N)?
>>
```

If you do not have a SUBSYS tape included in your package, and you respond N, AUTOINST will continue, automatically, to create the accounting structure (please see, "Create the Accounting Structure" in this chapter).

1. Mount the SUBSYS tape as requested:

```
MOUNT THE SUBSYS TAPE AND PUT THE TAPE
DRIVE ONLINE. THE HP-SUPPORTED SOFTWARE
FILES WILL BE RESTORED.
```

```
**** PLEASE STAND BY ****
THE HP-SUPPORTED SOFTWARE FILES ARE BEING RESTORED.
```

```
THE SUBSYS HAS BEEN SUCCESSFULLY RESTORED.
```

The time required to restore the SUBSYS tape is dependent on the number of products purchased, and may take up to 30 minutes (per 2400-foot reel).

Create the Accounting Structure

1. The accounting structure will be created. MPE displays logon, logoff, and TELLOP messages of the accounting structure jobs during this (approximately) fifteen-minute process.

```
BEGIN PROCESSING ACCOUNTING STRUCTURE JOB.  
THE ACCOUNTING STRUCTURE JOB WILL NOW BE STREAMED.  
  
.  
.  
.  
SUCCESSFUL COMPLETION OF SUPACCT!  
.  
.  
.  
SUCCESSFUL COMPLETION OF FIELDJOB!  
  
THE ACCOUNTING STRUCTURE HAS BEEN SUCCESSFULLY CREATED.
```

If the CE performed a RELOAD other than RELOAD NULL, the accounting structure jobs will not be streamed (it is assumed they were streamed by the CE).

Stream Installation Files

AUTOINST automatically streams installation jobs, if there are jobs to be streamed. This completes the installation of most products. AUTOINST displays progress messages, indicating completion of each job.

```
BEGIN PROCESSING INSTALLATION FILES.  
  
PROCESSING n INSTALLATION FILES.  
... ** where number of dots equals value of 'n' **  
  
THE INSTALLATION JOBS WILL NOW BE STREAMED.
```

When all installation jobs are complete, AUTOINST displays a verification message, as follows:

```
ALL PRODUCT INSTALLATION JOBS HAVE BEEN STREAMED SUCCESSFULLY.
```

1. If you have purchased any software which requires manual installation, a warning message (INSTWARN #1) will be displayed, listing those products. List these products on the worksheet.

```
*WARNING--THIS PROGRAM CANNOT INSTALL THE PRODUCTS
LISTED BELOW.  IF YOU WANT TO CONTINUE WITH AUTOINST,
THE COLDLOAD TAPE WILL NOT INCLUDE THESE PRODUCTS.
(INSTWARN #1)
```

```
DO YOU WANT TO INSTALL THESE PRODUCTS NOW AND CONTINUE
WITH AUTOINST AFTER INSTALLING THESE PRODUCTS (Y/N)?
>>
```

Caution

Be sure to install *all* of the products which require manual steps now, or install *all* of these products after installation. You can not install a few now and a few later.

If you choose to install these products after completing this installation, you will then need to create a second coldload tape.

To install these products now, reply Y.

2. A second warning message (INSTWARN #10) will list any special products which need further attention. List these products on the worksheet. You will be reminded to make the necessary configuration changes at the end of the installation.

```
*WARNING--THE FOLLOWING PRODUCTS MAY REQUIRE
CONFIGURATION CHANGES.  HOWEVER, THIS WILL NOT AFFECT
THE SOFTWARE INSTALLATION FOR THESE PRODUCTS.  THE
CONFIGURATION CHANGES MAY BE DONE AFTER COMPLETION OF
THE INSTALLATION.
(INSTWARN #10)
```

3. If you have replied Y, AUTOINST will stop to allow for the installation of non-AUTOINSTalled products after displaying the following message:

```
PLEASE CONTINUE WITH "MANUALLY INSTALLED PRODUCTS"
IN THE INSTALLATION MANUAL.
```

```
END OF PROGRAM
```

```
:
```

Note

If the warning message, INSTWARN #1, does not appear, go to the "Create the DUS Tape" step in chapter 7, "The DUS and Coldload Tapes", otherwise continue with step 4 below.

4. Some passwords must be removed before you install the manually installed/updated products. Remove the passwords from the user, group, and accounts listed on the worksheet. Use the LISTDIR5 utility to determine the passwords. The syntax is provided on the worksheet with space to record the passwords. If you need assistance with LISTDIR5, refer to the *MPE V Utilities Reference Manual* (P/N 32033-90008).
5. Re-enable your UDC directory as follows:

```
:PURGE COMMAND.PUB.SYS
:RENAME COMMOLD.PUB.SYS,COMMAND.PUB.SYS
:HELLO MANAGER.SYS;HIPRI
```
6. Even though you have re-enabled your UDC directory, some UDCs must be disabled before you install the manually installed/updated products. Be sure to disable the UDCs BEFORE attempting to install any of the products listed on the INSTWARN #1 message. Use the SHOWCATALOG command to determine the UDC filenames for the users, groups, and accounts listed on the worksheet. If any UDCs are enabled, disabled them and record the UDC filename in the space provided. The syntax for disabling the UDCs is provided on the worksheet.

Remember to re-enable the UDCs before you run AUTOINST again.



Install/Update Non-Autoinstall Products

The following subsections provide installation procedures for the products listed in INSTWARN #1. Install all of the products listed on the worksheet.

HP WordServices

HP WordServices is basically auto-installable. However, there are some commands that must be processed before the product is fully functional.

Log on to the system (use any convenient account). Use an editing program to print out the file README.JFPS.HPOFFICE. This file will give you the information you need to complete the installation. It will also provide you with instructions for printing the manual, *HP WordServices Administrator's Guide*.

HP Word/3000

To install HP Word/3000, perform the following steps.

1. Log on:

```
:HELLO MANAGER.SYS
```

2. The American version is installed automatically by AUTOINST as the default. To install the British version, an additional job must be streamed, as follows:

```
:STREAM INWORD2.HP32120.HPPL85 ** British Version **
```

3. If disk space is limited and the default language interface only is required, enter the following to delete unnecessary files:

```
:STREAM INWORD4.HP32120.HPPL85
```

4. If disk space is limited, HPWORD may be reduced in two ways:

- If the self-paced training course is not required, enter:

```
:PURGEACCT HPWORD
```

- If an HP2680 or HP2688 laser printer will not be used, purge environment files by entering:

```
:STREAM INWORD3.HP32120.HPPL85
```

5. To create a new user for the self-paced training course, log on and enter:

```
:HELLO MGR.HPWORD  
:NEWPUPIL name
```

The user *name* with the home group of *name* will be created in the HPWORD account. The training files, in PUB.HPWORD, will be copied to the *name* group.

6. If this is a new installation, create a configuration file. Log on and enter:

```
:HELLO WP.HPOFFICE,WP  
:GETRIN WORDRIN  
RIN nn  
:RUN HPWORD.PUB.SYS,WORDUTIL
```

Respond to the dialog as follows:

```
HP32120A.05.04 HPWORD (C) Hewlett-Packard Co. 1986
```

```
Select task: CONF
```

```
File name (WORDCONF.WP.HPOFFICE) <RETURN>
```

```
WORDCONF.WP.HPOFFICE does not exist or cannot be accessed.  
You are now creating a new configuration.
```

```
HPWORD RIN: nn ** 2-digit RIN obtained in the GETRIN command **
```

```
>S
```

```
File Name (WORDCONF.WP.HPOFFICE) <RETURN>
```

```
Configuration file saved.
```

```
Any new queue files needed, have been created.
```

```
>E
```

```
Select task: EXIT
```

```
END OF PROGRAM
```

```
:
```

7. Refer to the *HPWORD Administration Manual* (P/N 32120-90061) for other product configuration details.

HP File/Library

To install HP File/Library, perform the following steps.

1. Log on and enter:

```
:HELLO MGR.HPOFFICE  
:SETCATALOG LIBUDCS.MAILLIB.HPOFFICE, otherudcs, ...
```

Include all other UDC files to be enabled.

2. To complete the installation, log on and enter:

```
:HELLO MANAGER.SYS  
:SETCATALOG LIBUDCS.MAILLIB.HPOFFICE, otherudcs, ...
```

Include all other UDC files to be enabled.

Install or Update HP DeskManager

The HP DeskManager software is now installed on your system, however before attempting to use the product, there are some steps that must be completed.

- If you are installing HP DeskManager for the first time you must create and configure your databases. Refer to chapters 8 and 9 of the *HP DeskManager Administration* manual (P/N 36570-90134) for details on how to do this.
- The following UDC files are supplied with HP DeskManager:

```
OPERUDC.MAILLIB.HPOFFICE - this holds the operator commands  
MAILUDC.MAILLIB.HPOFFICE - this holds the user commands
```

The level at which these UDCs are set depends upon the guidelines followed at your site; however, Hewlett-Packard recommends setting the operator commands at the user level for the user MGR.HPOFFICE. To do this, enter the following commands:

```
:HELLO MGR.HPOFFICE,MAILDB  
:SETCATALOG OPERUDC.MAILLIB.HPOFFICE
```

Remember to include all other UDCs that are to be set at the same level in the SETCATALOG command.

The following three items may apply to your system. Please read them and follow the instructions, if they are applicable.

- The American version of the product is supplied as default, however, if a British version is to be installed, enter the command:

```
:STREAM UKDICT.MAILJOB.HPOFFICE
```

- If you are running HP DeskManager on a *standalone* system and Distributed Systems (DS) or Network Services (NS) are NOT installed, enter the command:

```
:STREAM DSNSSEGS.MAILJOB.HPOFFICE
```

- If you are upgrading an existing version of HP DeskManager, the old HP DeskManager job stream files will be overwritten during the installation process. If you have customized

any of these job stream files, you must re-apply your changes to the new files. DO NOT overwrite the new files with your old files. For a complete list of these job stream files, please refer to chapter 22 of the *HP DeskManager Administration* manual (P/N 36570-90134).

HP Telex II

To install HP Telex II, perform the following steps. If you are updating from an MPE version prior to G.02.00, one database TELBAS.HPTELEX.HPOFFICE must be converted from Image to TurboIMAGE. Refer to the *TurboIMAGE Reference Manual* (P/N 32215-90050) for details.

1. Log on:

:HELLO FIELD.HPPL85,HP36572

2. The American version of HP Telex will be installed automatically. British users must stream an additional job, as follows:

:STREAM INTELEX1

A message will be displayed indicating completion of the job.

3. Enable UDCs for HP Telex II users as follows:

:HELLO MGR.HPOFFICE,HPTELEX
:SETCATALOG TELUDC,otherudcs,...

4. Refer to the *Administrator's Guide to HP Telex II* (P/N 36572-90013) for configuration instructions.

HPOffice Connect to PROFS

To install HPOffice Connect to PROFS, perform the following steps.

1. Log on and enter:

:HELLO MGR.HPOFFICE,HPPROFS
:SETCATALOG PROFSUDC,otherudcs,...

2. Refer to the *Administrator's Guide to HPOFFICE Connect to PROFS* (P/N 27521-90001) for configuration instructions.

HPOffice Connect to DISOSS

If you are installing HP OfficeConnect to DISOSS on a GATEWAY system (an HP 3000 physically connected to an IBM mainframe), perform the following steps:

1. Log on:

:HELLO MGR.HPOFFICE

Set the UDCs with the following command:

:SETCATALOG DIAUDC.DIALIB.HPOFFICE, otherudcs;ACCOUNT

2. If you have renamed your SYSSTART.PUB.SYS file during system preparation, modify the renamed file by adding the following line:

:ALLOW @.@;COMMANDS=LOG

After the original, renamed SYSSTART file has been modified, purge the new SYSSTART file which DISOSS created.

Note Do not purge the SYSSTART file if:

- The original SYSSTART file was not renamed.
- There was no original SYSSTART file on the system.

-
3. Refer to the *Administrator's Guide to HPOFFICE Connect to DISOSS* (P/N 27515-90001) for any configuration changes.

New DS Databases

X.25/3000 requires a new version of a network configurator database. If your database is old (or if a database does not exist), you need to create a new version by following the steps in this section.

Verify Database Version

To determine if your database is an old or new version, follow these steps:

1. Logon:

:HELLO MANAGER.SYS

2. Check to see if a network configurator database exists:

:LISTF NET@.PUB.SYS,2

3. If the files NETCON, NETCON01, NETCON02, etc. appear, the database exists. Check the following table to determine the database version:

File Name	EOF Old Version	EOF New Version
NETCON	5	6 (IMAGE) 9 (TurboIMAGE)
NETCON04	137	187
NETCON05	16	85

4. If your database is new, you are all done. If your database is an old version, or if it does not exist, create a new version as explained on the following page.

Create New Database

To create a new database, continue as follows:

Note To transfer the database contents from the old to the new version, make sure you have a DBSTORE tape.

1. Purge the old database:

```
:RUN DBUTIL.PUB.SYS  
>>PURGE NETCON  
>>EXIT
```

2. Create the new version:

```
:FILE DBSTEXT=K20K131A.HP30131.HPPL87  
:RUN DBSCHEMA.PUB.SYS;PARM=1  
:RUN DBUTIL.PUB.SYS  
>>CREATE NETCON/NETDBMGR  
>>EXIT
```

Note Do not transfer the NETCON files to another system. These files are system dependent.

HP Predictive Support

If you are updating HP Predictive Support from a version earlier than A.02.03 (A.01.00 through A.02.02) the installation must be performed by your Hewlett-Packard customer engineer. You can determine the version of HP Predictive Support currently installed on your system by looking at the heading of a recent Action Summary Report.

If you are updating from A.02.03 or a later version, enter the following:

```
:HELLO MGR.TELESUP,HP51467  
:RUN PSCONFIG.HP51467.TELESUP
```

to confirm the configuration of HP Predictive for your system. Make any necessary changes.

```
:STREAM FIRSTRUN.HP51467.TELESUP
```

If you have NetAssure coverage, you must also order and install NetWork Predictive (P/N HP51468B).

Refer to the *Predictive Support User's Guide* (P/N 51467-90001) for further information on the configuration and use of HP Predictive Support.

HP Resource Sharing

To install Resource Sharing enter the following:

```
:STREAM JPDINSTL.PPC.SYS
```

Please refer to the *Resource Sharing for MPE V Manual* (P/N 32597-90079) for detailed instructions on configuring Resource Sharing.

Note Resource Sharing is not fully configured until the job CONFJOB.NET.SYS has completed successfully. Do not stream this job now. Stream CONFJOB when requested to do so in the chapter titled "Bring the System Up."

HP Information Access Server

To install Information Access Server enter the following:

```
:STREAM JINSTHDP.PPCUTIL.HPOFFICE
```

Please refer to the *Information Access Server: System Management Manual* (P/N B1716-90018) for detailed instructions on installing and configuring Information Access Server.

Note Information Access Server is not fully configured until the job CONFJOB.NET.SYS has successfully completed. Do not stream this job now. Stream CONFJOB when requested to do so in the chapter titled "Bring the System Up."





The DUS and Coldload Tapes

Restart AUTOINST

1. When all products listed in INSTWARN #1 have been manually installed, re-enter the passwords and re-enable the UDCs recorded on the worksheet.

2. Disable your UDC directory as follows:

```
:RENAME COMMAND.PUB.SYS,COMMOLD.PUB.SYS
:BUILD COMMAND.PUB.SYS
:HELLO MANAGER.SYS;HIPRI
```

3. Run AUTOINST again to resume execution.

```
:RUN AUTOINST
```

AUTOINST will create a coldload tape used to incorporate products that are stored in the system library.

Create the DUS Tape

The CE Diagnostics (DUS) tape needs to be created before the coldload tape process begins.

1. For a dual-density drive, the following message will be displayed:

```
THE CE DIAGNOSTICS AND COLD LOAD TAPES WILL
NOW BE CREATED. SHOULD THE TAPE DRIVE DEFAULT
DENSITY <nnnn> BE USED TO CREATE THESE TAPES (Y/N)?
```

If N, supply the appropriate density at the prompt.

2. Mount the tape as requested, using a 1200' tape, and place the drive online.

```
TO CREATE A CE DIAGNOSTICS TAPE, ENSURE THAT
WRITE IS ENABLED ON A BLANK TAPE. MOUNT THE
TAPE AND PUT THE TAPE DRIVE ON LINE.
```

3. When the DUS tape is created, follow the instructions given for tape labeling in the message displayed:

THE CE DIAGNOSTICS TAPE HAS BEEN SUCCESSFULLY CREATED.
LABEL THIS TAPE "DUS TAPE <V.UU.FF>". REFER TO
THE FOS TAPE LABEL FOR THE <V.UU.FF>.
ENSURE THAT WRITE IS NOW DISABLED.

Create the Coldload Tape

The coldload process takes approximately two hours. However, it can take as little as 15 minutes, depending on the number of products on the SUBSYS. The tape drive will appear to be inactive during the process of compiling the data to be written to tape. When the compilation is complete, the tape drive will become active. As the data is written to tape, progress messages will be displayed, indicating the percentage of the store operation completed.

To create the coldload tape, follow the steps below:

1. Mount a blank write-enabled tape when prompted as follows:

TO CREATE A COLD LOAD TAPE, ENSURE THAT WRITE IS
ENABLED ON A BLANK TAPE. MOUNT THE TAPE AND PUT
THE TAPE DRIVE ONLINE.

The coldload tape creation process can take up to three hours before the tape drive becomes active. This inactive period is dependent on the subsystems purchased.

2. When the coldload tape has been created, the following message will be displayed. Label the tape as specified.

THE SYSTEM COLD LOAD TAPE HAS BEEN SUCCESSFULLY CREATED.
LABEL THIS TAPE "COLD LOAD <V.UU.FF>". REFER TO
THE FOS TAPE LABEL FOR THE <V.UU.FF>. ENSURE THAT
WRITE IS NOW DISABLED.

3. The spoolfiles from the creation of the coldload tape will be lost when you perform the coldstart. Allow them to complete printing, or store them off to tape with the SPOOK utility and purge them.

Note If spoolfiles are not purged from the system, the space they occupy will not be reallocated to free space.

Coldstart the System

Update the system from the coldload tape by performing the following steps.

1. Halt the system and load the new coldload tape, as specified below.
2. Enter:

```
(CONTROL) A
=SHUTDOWN
```

The system will halt with the following message:

```
SESSION ABORTED BY SYSTEM MANAGEMENT
SHUT
```

3. If the system does not halt within 60 seconds, manually halt the machine, as follows:

```
(CONTROL) B
->HALT
```

4. Remount the coldload tape (write-protected) and place the tape drive online. Enter:

```
->LOAD
```

Respond to the prompts as shown:

```
WHICH OPTION (COLDSTART/RELOAD/UPDATE)? COLDSTART
ANY CHANGES? N
```

5. Do not interrupt processing until you are prompted for the date and time. The coldstart will take approximately 15 minutes.

```
**WARNING** AFTER THIS POINT DO NOT INTERRUPT THE STARTUP
PROCESS UNTIL AFTER THE MESSAGE "WELCOME" APPEARS
```

```
DIRECTORY MAINTENANCE COMPLETED
LOADING OF SYSTEM FILES IN PROGRESS
LOADING OF SYSTEM FILES COMPLETED
PART 1 OF 6 COMPLETED - MEMORY RESIDENT TABLES SET UP
PART 2 OF 6 COMPLETED - SL BINDING
PART 3 OF 6 COMPLETED - SYSTEM I/O PROCESS CREATION
PART 4 OF 6 COMPLETED - DRIVER LOADING
PART 5 OF 6 COMPLETED - DISC RESIDENT TABLES SET UP
PART 6 OF 6 COMPLETED - SYSTEM PROCESS CREATION
```

```
BANK 0 DEPENDENT MEMORY USED - xxxx
```


Respond to the date prompt as requested.

```
DATE (M,D,Y)? mm/dd/yy
TIME (H:M)? hh:mm      ** 24 hour format **
```

Confirm the date and time as prompted.

6. If you are installing LAN Link, the following message may appear:

```
UNABLE TO OPEN SOCKET LOGGING; NM ERROR=nn
SOCKETS 702
```

This message is normal following the installation of LAN Link software if the product configuration is not complete. (The NM configuration will be performed later.)

7. The system will be up and running. Log on:

```
:HELLO MANAGER.SYS
```

Bring the System Up

All files have been restored and the system is operational. Certain products require additional procedures to make the software functional. The system can then be brought up for normal production.

Create 64/68/70 Diagnostics

If you are running a Series 64, 68, or 70 machine, refer to appendix C, "Series 64/68/70 Diagnostics" at this time to create the Fault Locating Diagnostics (FLD).

Convert IMAGE Databases

If updating from a version prior to G.02.0n, all existing databases, including HPMAIL and DICTIONARY, must be converted to TurboIMAGE format before they are operational. Refer to appendix D, "Image Database Conversion" and the *TurboIMAGE Database Management System Reference Manual* (P/N 32215-90050) (appendix H) for conversion instructions.

Install NS/3000 & OFFICESHARE LAN/3000

To install NS/3000 and OFFICESHARE LAN/3000, follow these steps:

1. Log on:

```
:HELLO MANAGER.SYS
```

2. Enable the streams device and build the configuration file, as follows:

```
:STREAMS 10
```

```
:STREAM CONFJOB.NET.SYS
```

After two or three minutes a completion notice is displayed:

```
CONFIGURATION CREATION SUCCESSFUL
```

Configure Special Products

If you have special products (flagged by INSTWARN #10) listed on the worksheet, consult the applicable manual in the table below.

If you are installing any of these products for the first time, you **MUST** make the necessary configuration changes before the product is fully operational.

If you are updating any of these products, you **MAY** need to make configuration changes before the product is fully operational.

Products Requiring Configuration Changes

PRODUCT	PRODUCT #	MANUAL & CUSTOMER ORDER NUMBER
SNA NRJE	HP30245	SNA Link Services Reference Manual (30246-90003)
SNA LINK	HP 30246	SNA Link Services Reference Manual (30246-90003)
SNA IMF	HP 30247	SNA Link Services Reference Manual (30246-90003)
MRJE/3000	HP30249	MRJE/3000 User/Programmer's Reference Manual (30249-90001)
IMF/3000	HP30250	DSN/IMF Interactive Mainframe Facility Reference Manual (32229-90001)
LU6.2 BASE	HP30252	SNA Link Services Reference Manual (30246-90003)
LU 6.2 API	HP30253	SNA Link Services Reference Manual (30246-90003)
HP ADVANCENET DMI	HP30264	Digital Multiplexed Interface (DMI) Reference Manual (30288-90001)
MTS/3000	HP32025	DSN/MTS Multipoint Terminal Software Reference Manual (32193-90002)
DS NETWORK SERVICES	HP32185	DS/3000 HP 3000 to HP 3000 User/Programmer Reference Manual (32185-90001)
DS/X.25 NETWORK LINK	HP32187	X.25/Link for the HP 3000 Reference Manual (32187-90001)

Products Requiring Configuration Changes (continued)

PRODUCT	PRODUCT #	MANUAL & CUSTOMER ORDER NUMBER
NS/3000 Services	HP32344	Vol 1: NS/3000 Network Manager Reference Manual (32344-90002)
INFORMATION ACCESS	B1726B	Information Access Server: System Management (B1716-90018)
RESOURCE SHARING	HPB1727A	Resource Sharing for MPE/V (32597-90079)
NS Point-to-Point Link ASYNC Serial Network Link OfficeShare LAN LINK NS X.25 LINK	HP30284 HP30285 HP32003 HP30240 HP24405	Vol 1: NS3000/V Network Manager Reference Manual (32344-90002) Vol 2: NS3000/V Network Manager Reference Manual (32344-90012)
NetDelivery/V	HP32346	NetDelivery/V Configuration Planning Guide (32346-90005)
NLS/3000	HP32414	Native Language Support Reference Manual (32414-90001)
PREDICTIVE SUPPORT	HP 51467	HP Predictive User's Guide (51467-90001)

System Startup

Perform the following steps (on the system console):

1. Log on:

:HELLO MANAGER.SYS

2. Purge the group CREATOR.SYS. It contains Hewlett-Packard maintenance files which are no longer needed.

:PURGEGROUP CREATOR

3. If you have Security Monitor, re-enable your security configuration as follows:

:RUN SECCONF

The program will display the MAIN MENU. Select option 0 (zero), "EXIT". You will see:

Your security configuration changes will now take effect.

Thank you for using the Security Configurator.

END OF PROGRAM

:

4. If you have Security Monitor, add the `USERPASS=REQ` option to any `USERS` which have had the option removed (refer to the worksheet). Do so by entering the following:

```
:ALTUSER username;USERPASS=REQ
```

5. Replace passwords, if any, that were changed by `AUTOINST`. Refer to `AUTOHIST.PUB.SYS` to determine which passwords were changed.
6. Reinstate the original filename of `SYSSTART` (check the name you recorded on the worksheet), as follows:

```
:PURGE SYSSTART  
:RENAME filename,SYSSTART
```

Note The commands in your `SYSSTART` file will only be executed when you `START` (Warm or Cool) or `LOAD` (Update, Coldload or Reload) your system.

7. Restart logging processes, if you terminated them in chapter 3.
8. Re-enable your UDC directory as follows:

```
:PURGE COMMAND.PUB.SYS  
:RENAME COMMOLD.PUB.SYS,COMMAND.PUB.SYS  
:HELLO MANAGER.SYS;HIPRI
```

9. Hewlett-Packard recommends that you set passwords for the following accounts and users. These accounts and users are currently created or modified during the update process, regardless of the type of products on the `SUBSYS` tape. You may find that some of these accounts do not contain files after you complete the update.

- CONV
- HPOFFICE
- HPPL85
- HPPL87
- HPPL96
- HPPL89
- ITF3000
- RJE
- SUPPORT
- TELESUP

The following users are created or modified to have `OP` and/or `PM` capabilities. We recommend that you set passwords for these users.

- MGR.HPOFFICE
- FIELD.HPPL85
- MGR.TELESUP

Record the passwords and keep them in a secure place.

10. If any modifications were made to the old `CATALOG.PUB.SYS` file, re-enter the modifications in the new file.
11. If any user `SL` segments resided in `SL.PUB.SYS` before the installation, replace them. A new coldload tape should be made.

12. If you have any data communication products, the configuration files may need to be updated. To update the configuration file, RUN NMMGRVER.PUB.SYS.

Sample Conversion Syntax to the NMMGRVER program

The screens in this section are examples of user input to the NMMGRVER program.

The following example screen indicates no conversion is necessary.

```
:RUN NMMGRVER
.
.
Fileset to be scanned? C.NET
OK to convert NSCONFX.NET.SYS? Y
No need to convert (NMMGRVERMSG 1)

END OF PROGRAM
:RUN NMMGRVER
Fileset to be scanned? C.PUB
OK to convert NMCONFIG.PUB.SYS? Y
No need to convert (NMMGRVERMSG 1)
```

The following example screen shows a conversion is necessary.

```
:RUN NMMGRVER
.
.
Fileset to be scanned? C.NET
OK to convert NSCONFX.NET.SYS? Y
CONVERSION completed successfully. (NMMGRVERMSG 0)

END OF PROGRAM
:RUN NMMGRVER
Fileset to be scanned? C.PUB
OK to convert NMCONFIG.PUB.SYS? Y
CONVERSION completed successfully. (NMMGRVERMSG 0)
```

Note

The above screens show examples of user input to the NMMGRVER program. The actual fileset you will need NMMGRVER to scan will depend on where your configuration files are located.

Further assistance with this utility program can be found in the *NS/3000/V Network Reference Manual, Vol. 1* (P/N 32344-90002), appendix C, "Converting Configuration Files".

13. Open the applicable communication lines as follows:

```
:LIMIT n,nn ** n=jobs, nn=sessions **  
:STREAMS 10  
:DSCONTROL ldev;OPEN  
:MRJECONTROL SIGNON  
:MPLINE ldev,OPEN  
:SNACONTROL START;NODE=nodename  
:IMFCONTROL START imfconfigfile  
:NRJECONTROL START;WSID=wsidname  
:NETCONTROL START  
:NSCONTROL START  
:OUTFENCE n  
:JOBFENCE n
```

14. Enable disc caching, if applicable:

```
:STARTCACHE ldev#
```

15. Record the installation in the system logbook.

Note If you have any patches that need to be applied, please refer to your Patch installation instructions and install them at this time.

Series 64/68/70 Diagnostics

This appendix provides instructions for creating the Fault Locating Diagnostics (FLD) on the Series 6X and 70 machines.

The procedures for creating the FLD differ, depending on which terminal you are using as the system console, the HP 2647F, or the HP 150. The disk formatting instructions have been separated from FLDCOPY program dialog for each type of terminal. Follow the instructions for your system console.

Creating Diagnostics on the HP 2647F

Before you run the FLDCOPY program, you must format the disk, as follows:

Format the Disk

1. Ensure the disk is write-enabled and insert it in the drive.
2. When the red light stops flashing on the drive, press the command key on the console keyboard.
3. Press **(f8)**, **(f1)**, and **(f3)** in sequence. The following message will be displayed:

```
FORMAT VOLUME ON DISC#
```

4. Enter:

```
1
```

5. Two messages will be displayed (the second in inverse video):

```
** Disc FORMAT in progress **
```

```
** Disc VERIFY in progress **
```

6. When the * prompt is displayed, press the COMMAND key to terminate the process.

Run FLDCOPY

1. Log on and enter:

:HELLO FIELD.SUPPORT,HP32342

:RUN FLDCOPY

FLDCOPY

This utility program is intended to make copies of Fault Locating Diagnostics (binary) to HP9164-0128 flexible disc media by using the HP2642A 3000/64 System Console.

Successful operation of this utility requires that the MPE Console (ldev#20) be temporarily moved to another appropriately configured terminal. Perform the following operations:

1. Press: "BREAK" key
2. Type: "CONSOLE <ldev#>" to move System Console
3. Type: "RESUME"
4. Type: "GO" to continue

The console will be switched back to ldev#20 programmatically upon successful completion of the program.

TYPE "GO" TO CONTINUE **GO**

Pressing control Y will transfer control to a trap procedure, which switches the Console back to device 20, sets terminal echo on, and terminates the program. It should be used to abort the program whenever possible. However, during binary data transfer, control Y is regarded as data by the system. If it is necessary to abort the program during binary read or write, and control Y seems to be ignored, do the following instead:

1. press "BREAK" key
 2. press "ESC" & ":" keys (turn on terminal echo)
 3. type "ABORT", CR
 4. type "RUN CBON", CR (enable control B)
 5. type "CONSOLE 20", CR (switch System Console back)
- .
- .
- .

Do you have a permanent file (saved from previous execution of this program) you want to copy the discs from? YES

What is the name of the permanent file? S64FLDS

Do you want instructions to prepare the T0 disc for copying? YES

To prepare the T0 disc for copying, do the following:

1. Make sure the disc media is not write protected and then insert the disc into the unit and close the door.
2. Push the COMMAND key.

NOTE: Steps 3-7 require usage of the System Console soft keys. They are preprogrammed and should be pushed in the sequence stated.

3. SHOW VOLUME (Press F3,F2,<CR>)

VOLUME NAME		HP-IB ADDRESS		
Local	Disc	Start of	Space	Write
Volume	Type#Unit	Free Space	Left	Protect
-----	-----	-----	-----	-----
<i>name</i>	<i>type#</i>	<i>###</i>	<i>###</i>	<i>NO</i>

4. If volume name is "nonsif" or "nonfmat" then go to Step 6.
5. PURGE VOLUME <volume name> (press F8,F4,F5, type volume name to be purged, <CR>)
6. CREATE VOLUME <volume name> ON DISC#1 (press F8,F5,F6, type in a volume name, press F2, type "1", <CR>)
7. VERIFY ENABLE (press F1 twice, F4 twice, <CR>)
8. Press COMMAND key, <CR>.

Press RETURN when disc is ready and inserted

Do not enter anything on the keyboard until you see "Do you want to make another copy?" The values given in the example below may differ from those on your display.

BEGIN WRITE (approximately 15 minutes)

3 RECORDS RECORDED, FILE 1
7 RECORDS RECORDED, FILE 2
16 RECORDS RECORDED, FILE 3
15 RECORDS RECORDED, FILE 4
14 RECORDS RECORDED, FILE 5
6 RECORDS RECORDED, FILE 6
3 RECORDS RECORDED, FILE 7
90 RECORDS RECORDED, FILE 8
121 RECORDS RECORDED, FILE 9
97 RECORDS RECORDED, FILE 10
65 RECORDS RECORDED, FILE 11
146 RECORDS RECORDED, FILE 12
10 RECORDS RECORDED, FILE 13
170 RECORDS RECORDED, FILE 14
14 FILES COPIED.

WRITE COMPLETED

Do you want to make another copy?

2. To make another copy, reply YES. You will be prompted: "Do you want the instructions to prepare the T0 disc for copying?"

If N, the following message will be displayed, and the program will terminate.

```
CONSOLE HAS BEEN SWITCHED FROM LDEV 21 TO LDEV 20 .  
END OF PROGRAM  
:
```

3. Remove the disk from the drive and label it with "FLD", the date, and the v.uu.ff number.

Creating Diagnostics on the HP 150

Before you run the FLDCOPY program, you must format the disk as follows:

Format the Disk

1. Select the **FORMAT** option on the Personal Applications Manager (PAM) menu. Press **RETURN**.
2. A menu will prompt you to select Drive A or B. Type B, and press **RETURN**.
3. You will be prompted to supply **DISC LABEL**. If you wish, you can type a name (perhaps for archiving purposes). This is optional, and won't interfere with creating the diagnostics. If you do not need a label, simply press **RETURN**.
4. Notice the function keys now show a new set of options. Select the **START FORMAT** option. A message is displayed when the disk format is complete.
5. The disk is now ready to store the diagnostics. Leave the disk in Drive B, and run FLDCOPY as described below.

Run FLDCOPY

You may want to read through the dialog of the FLDCOPY program shown below. The dialog gives specific instructions. The appropriate responses are shown, underlined in a boldfaced type.

1. To run the program, log on, and enter the following:

```
:HELLO FIELD.SUPPORT,HP32342  
:RUN FLDCOPY
```

2. Go through the dialog as shown:

run fldcopy

FLDCOPY - ver 13.0 - ver 13.0

Terminal= 150B, Ldev= 21, MPE Console Ldev= 20

This utility program is intended to make copies of Fault Locating Diagnostics (binary) to HP92190A flexible disc media by using the HP2647F or to HP92192A micro flexible disc media by using an HP150 running the HP3000 S68 DCU to HP150 Communication Program.

TYPE 'GO' TO CONTINUE

go

Pressing <CTRL> and <Y> will transfer control to a trap procedure, which sets terminal echo ON and terminates the program.

The CTRL-Y trap should be used to abort the program whenever possible. However, during binary data transfer, CTRL-Y is regarded as data by the system. If it is necessary to abort the program during binary read or write, and CTRL-Y seems to be ignored, do the following instead:

1. press <BREAK> {break to MPE}
2. type <ESC> ':' {turn on terminal echo}
3. type 'ABORT' <Return> {abort FLDCOPY}

Do you have a permanent file (saved from previous execution of this program) you want to copy the discs from? yes

What is the name of the permanent file? s64flds

Do you want the instructions to prepare the T0 disc for copying? yes

To prepare the T0 disc for copying on the HP150:

1. Make sure the HP150 is running the HP3000 S68 DCU to HP150 Communication Program.
2. Make sure the micro floppy disc is not write-protected and insert the disc into drive B.
3. Press <Shift> and <User/System> at the same time to display the communication program application softkeys.
4. Press <disc (f6) > to access the 'disc' menu keys.
5. Press <FORMAT FLOPPY (f1) > to format the disc in drive B.
6. Wait for the format warning message and type 'Y' to continue the floppy format process.
7. Wait for the 'FORMAT DONE!' message.

Press <Return> when disc is ready and inserted.

Do not enter anything on the keyboard until you see "Do you want to make another copy?" (The values given in the example below may differ from those on your display.)

```
BEGIN WRITE (approximately 15 minutes)
```

```
3 RECORDS RECORDED, FILE 1
7 RECORDS RECORDED, FILE 2
16 RECORDS RECORDED, FILE 3
15 RECORDS RECORDED, FILE 4
14 RECORDS RECORDED, FILE 5
6 RECORDS RECORDED, FILE 6
3 RECORDS RECORDED, FILE 7
90 RECORDS RECORDED, FILE 8
121 RECORDS RECORDED, FILE 9
97 RECORDS RECORDED, FILE 10
65 RECORDS RECORDED, FILE 11
146 RECORDS RECORDED, FILE 12
10 RECORDS RECORDED, FILE 13
170 RECORDS RECORDED, FILE 14
14 FILES COPIED.
WRITE COMPLETED
Do you want to make another copy?
```

3. To make another copy, reply YES. You will be prompted: "Do you want the instructions to prepare the T0 disc for copying?"

If N, the following message will be displayed, and the program will terminate.

```
CONSOLE HAS BEEN SWITCHED FROM LDEV 21 TO LDEV 20 .
END OF PROGRAM
:
```

4. Remove the disk from the drive and label it with "FLD", the date, and the v.uu.ff number.



Error Messages and Warnings

AUTOINST error messages, and their appropriate resolutions, are provided in this appendix. Also provided are three potential system error messages. Any other programmed messages can be found in the appropriate MPE manual or applicable utility manual.

AUTOINST Messages

AUTOINST error messages and warnings are listed in numerical order. Resolutions are provided for each message. If you encounter an AUTOINST error message that is not listed below, please contact your Response Center for assistance.

Error Messages

#1

INSTALLATION CAN ONLY BE PERFORMED BY MANAGER.SYS,PUB. (INSTERR #1)
--

Log on as follows, and run AUTOINST again.

:HELLO MANAGER.SYS,PUB

#2

*WARNING -- THIS SYSTEM DOES NOT HAVE ENOUGH
DISC SPACE ON LDEV 1. (INSTERR #2)

Run FREE5.PUB.SYS to determine the amount of disk space that must be released. Use one of the options below to free your disk space:

- (recommended) Store off to tape, then purge files until you have enough free space.
- Use the :VINIT command with the >COND 1 option.
- Perform a COOLSTART, answering Y to the "RECOVER LOST DISC SPACE" step. It takes approximately 10 minutes for every 1,000 files to recover the disk space. After the COOLSTART, use the :VINIT command with the >COND 1 option.

When you have successfully reserved 17,000 contiguous sectors of disk space, run AUTOINST again.

#3

UNRECOGNIZABLE PARAMETER ENTERED. (INSTERR #3)

Please enter the appropriate info parameter.

#4

CREATION OF THE ACCOUNTING STRUCTURE HAS
FAILED. (INSTERR #4)

This message may have appeared if:

- Other jobs or sessions are logged on to the system. If so, abort these jobs/sessions, and all deferred jobs, and run AUTOINST again using the same "INFO=" parameter.
- Some UDCs were not disabled at the system, account, or user levels. If so, disable them at this time. Abort all deferred jobs, and run AUTOINST again using the same "INFO=" parameter.
- Use SPOOK5.PUB.SYS to inspect the spoolfiles generated by AUTOINST for the accounting structure jobs. If necessary, take the appropriate corrective actions and run AUTOINST again using appropriate info parameters. If you cannot resolve the problem, or if AUTOINST fails again, please contact your Response Center for assistance.

If none of the above conditions caused the creation of the accounting structure to fail, contact your Response Center.

#5

THE FILES FROM THE FOS TAPE WERE NOT SUCCESSFULLY
RESTORED. (INSTERR #5)

Use an editor to inspect the file FOSLIST.PUB.SYS. The error messages in this file indicate problems encountered in restoring files from the FOS tape. Take appropriate corrective measures and run AUTOINST again using appropriate info parameters. If unsuccessful a second time, please contact your Response Center for assistance.

#6

THE SUBSYS TAPE HAS NOT BEEN SUCCESSFULLY RESTORED.
(INSTERR #6)

Use an editor to inspect the file SUBSLIST.PUB.SYS. The error messages in this file indicate problems encountered in restoring files from the SUBSYS tape. Take appropriate corrective measures and run AUTOINST again using appropriate info parameters. If unsuccessful a second time, contact your Response Center.

#7

COULD NOT PURGE THE FILE FILELIST.PUB.SYS (INSTERR #7)

If a file FILELIST.PUB.SYS already exists, and you need to keep it, rename it using the :RENAME command. Otherwise, purge the file and run AUTOINST again using appropriate info parameters.

#8

THE COLD LOAD TAPE WAS NOT SUCCESSFULLY CREATED. (INSTERR #8)

Use the utility SPOOK5.PUB.SYS to inspect the spoolfiles generated by AUTOINST for the job DUMP.PUB.SYS. If necessary, take appropriate corrective measures and run AUTOINST again using appropriate info parameters. If you cannot resolve the problem or AUTOINST fails again, please contact your Response Center for assistance.



#9

FOUND INVALID COLD LOAD LOGICAL DEVICE NUMBER. (INSTERR #9)

The LDEV number found by AUTOINST was invalid (i.e. less than 0 or greater than 999). Check your system configuration, enter the correct value, and run AUTOINST again using appropriate info parameters. If this error occurs a second time, please contact your Response Center for assistance.

#11

DLGINFO HAS BEEN PURGED FROM THE SYSTEM. (INSTERR #11)

Restore DLGINFO.PUB.SYS from the FOS tape, and run AUTOINST again using appropriate info parameters. Be sure to use the appropriate FOS tape.

#12

PROGRAM FILE INSTALL.PUB.SYS NOT FOUND. (INSTERR #12)

Restore INSTALL.PUB.SYS from the FOS tape and run AUTOINST again using appropriate info parameters. Be sure to use the appropriate FOS tape.

#13

THE PROGRAM INSTALL.PUB.SYS WAS NOT SUCCESSFUL. (INSTERR #13)

This message will appear in conjunction with INSTERR #8. Please refer to the instructions given for INSTERR #8 for the appropriate action.

#18

TEMPLATE HAS BEEN PURGED FROM THE SYSTEM. (INSTERR #18)

Restore TEMPLATE.PUB.SYS from the FOS tape, and run AUTOINST again using appropriate info parameters. Be sure to use the appropriate FOS tape.

#19

SUPACCT HAS BEEN PURGED FROM SYSTEM. (INSTERR #19)

Restore SUPACCT.PUB.SYS from the FOS tape and run AUTOINST again using appropriate info parameters. Be sure to use the appropriate FOS tape.

#20

CYCLIC JOB CALL ENCOUNTERED. JOB PROCESSING *ifilename*
(INSTERR #20)

Type LISTF I???????.USL.SYS.

- If the file INDIRECT exists, purge it, and run AUTOINST again using the appropriate parameters.
- If the LISTF lists the *ifilename* identified in the error message, inspect that file for valid job commands. If this inspection shows that the file is not a valid job, either purge the file, or remove it from the group/account USL.SYS.
- If the LISTF lists the *ifilename* identified in the error message, and inspection of the file shows that the file is a valid job, the file may be corrupted. Purge the file, and restore it again from the SUBSYS tape. Run AUTOINST again using the appropriate parameters.

If AUTOINST fails again with this error, please contact your Response Center for assistance.

#21

INVALID JOB ENCOUNTERED. JOB PROCESSING: *ifilename*
(INSTERR #21)

Please follow the instructions given for INSTERR #20.

#22

AN INSTALLATION JOB STREAM HAS FAILED. JOB STREAMING: *ifilename*
(INSTERR #22)

Use SPOOK5 to determine why the job failed. (Text the file in SPOOK5, and read the JCL.) If you need the job number, use an editor to text HPINSTFL. The job numbers are listed at the end of HPINSTFL.

#28

```
INSTALLATION FILE CALLED BY JOB.  JOB PROCESSING: ifilename
(INSTERR #28)
```

Please follow the instructions given for INSTERR #20.

#29

```
UNABLE TO RECOVER INSTALLATION FILE PROCESSING.
(INSTERR #29)
```

A required installation file has been purged from the system. Restore I?????????.USL.SYS from the SUBSYS tape, and run AUTOINST again using the appropriate parameters. Be sure to use the appropriate SUBSYS tape.

#30

```
AUTOINST DOES NOT SUPPORT STREAMING EXTERNAL JOBS
FROM WITHIN INSTALLATION FILE.
JOB PROCESSING: |filename
(INSTERR #30)
```

Please follow the instructions given for INSTERR #20.

#35

```
DLGPATCH HAS BEEN PURGED FROM THE SYSTEM
(INSTERR #35)
```

Restore DLGPATCH.PUB.SYS from the PowerPatch tape and run AUTOINST;INFO="PATCH" again.

#36

ADD-ON CANNOT BE COMPLETED WITHOUT AN ADD-ON
SUBSYS TAPE.
(INSTERR #36)

Your ADD-ON installation package is incomplete if it does not include an ADD-ON SUBSYS tape. Contact your Response Center.

#37

PATCH CANNOT BE COMPLETED WITHOUT A PATCH TAPE.
(INSTERR #37)

Your PATCH installation package is incomplete if it does not include a PATCH tape. Contact your Response Center.

#38

THE ADD-ON TAPE HAS NOT BEEN SUCCESSFULLY RESTORED.
(INSTERR #38)

Please follow the instructions given for INSTERR #6.

#39

THE PATCH TAPE HAS NOT BEEN SUCCESSFULLY RESTORED.
(INSTERR #39)

Please follow the instructions given for INSTERR #6.

#40

ERROR TRYING RUN STORE.PUB.SYS (INSTERR #40)
COULD NOT CREATE STORE/RESTORE PROCESS. CREATE PROCESS ERROR:n

The call to the intrinsic CREATEPROCESS has failed. Consult your *MPE V/E Intrinsic Reference Manual* (P/N 32033-90007) to determine error. If error cannot be resolved, contact your Response Center.

#41

```
UNABLE TO OBTAIN CONSOLE LDEV#  
(INSTERR #41)
```

Please contact your Response Center for assistance.

#42

```
UNABLE TO OBTAIN USER LOGON LDEV#  
(INSTERR #42)
```

Please contact your Response Center for assistance.

#43

```
INSTALLATION CAN ONLY BE PERFORMED FROM CONSOLE  
(INSTERR #43)
```

Log on to the console and run AUTOINST again.

Warning Messages

#1

```
*WARNING -- THIS PROGRAM CANNOT INSTALL THE PRODUCTS  
LISTED BELOW. IF YOU WANT TO CONTINUE WITH AUTOINST  
THE COLD LOAD TAPE WILL NOT INCLUDE THESE PRODUCTS.  
(INSTWARN #1)
```

The SUBSYS tape has non-AUTOINSTallable products. Install all of these products before creating the coldload tape. If you do not, you will need to create another coldload tape.

#2

THE CE DIAGNOSTICS TAPE WAS NOT SUCCESSFULLY CREATED.
HOWEVER, THIS WILL NOT AFFECT THE INSTALLATION.
(INSTWARN #2)

When AUTOINST has completed, mount a blank (write-enabled) tape. Put the tape drive online, and enter the following:

:HELLO FIELD.SUPPORT,HP32231
:RUN COPYDUS

Label the tape with the date and date code.

#3

LOGICAL DEVICE *nn* IS AN INVALID COLD LOAD MEDIA DEVICE.
(INSTWARN #3)
PLEASE ENTER ANOTHER LOGICAL DEVICE NUMBER FOR
CREATION OF THE COLD LOAD TAPE.
>>

Please enter the valid logical device number of your tape drive.

#4

CANNOT CREATE DUS TAPE BECAUSE OF INVALID LDEV TYPE.
(INSTWARN #4)

Please follow the actions described for INSTWARN #2.

#5

COULD NOT CREATE DUS PROCESS.
(INSTWARN #5)
CREATEPROCESS ERROR: *nn*

Please follow the actions described for INSTWARN #2.

#6

```
AN INVALID LOGICAL DEVICE NUMBER WAS ENTERED.  
(INSTWARN #6)  
PLEASE ENTER ANOTHER LOGICAL DEVICE NUMBER FOR  
CREATION OF THE COLD LOAD TAPE.  
>>
```

Please enter the valid logical device number of your tape drive.

#7

```
INVALID DENSITY SPECIFIED.  
(INSTWARN #7)
```

Please enter a valid tape density.

#8

```
EXPECTED "YES" OR "NO".
```

The input to the prompt was invalid. Please enter "YES" or "NO" at the prompt.

#9

```
INVALID INPUT.  
(INSTWARN #9)
```

Please respond to the prompt as directed.

#10

```
*WARNING -- THE FOLLOWING PRODUCTS MAY REQUIRE  
CONFIGURATION CHANGES. HOWEVER, THIS WILL NOT AFFECT  
THE SOFTWARE INSTALLATION FOR THESE PRODUCTS. THE  
CONFIGURATION CHANGES MAY BE DONE AFTER COMPLETION  
OF THE INSTALLATION. (INSTWARN #10)
```

Data communication products exist on the system that may require changes to the configuration. Please consult the appropriate reference manual after installation of the product is complete.

System Errors

System-generated error messages, particular to the functioning of AUTOINST, and their resolutions are described below. Any other system errors are referenced in the appropriate MPE manual.

Out of Disk Space on LDEV1

If you received the message:

ERROR #326 OUT OF DISC SPACE ON LDEV1

Enter the following commands:

On a Series 37, MICRO 3000, or MICRO 3000/XE:

Ensure the keyswitch is in position 2. Enter:

```
(CONTROL) B  
H for HELP->START
```

Respond Y to abort the system.

On all other systems:

Enter:

```
(CONTROL) B  
>HALT
```

Perform a COOLSTART. When prompted "RECOVER LOST DISC SPACE?", respond Y and default everything else. It will require approximately ten minutes per 1000 files to recover the disk space. When the COOLSTART has completed, use the MPE VINIT command with the >COND 1 option.

Should the COOLSTART fail, perform a RELOAD from your backup tapes.

Out of Memory or Out of BANK 0

If you received the message:

ERROR #350 OUT OF MEMORY

or

ERROR #351 OUT OF BANK 0

Enter the following commands:

On a Series 37, MICRO 3000, or MICRO 3000/XE:

Ensure the keyswitch is in position 2. Enter:

CONTROL B
H for HELP->START

Respond Y to abort the system.

On all other systems:

Enter:

CONTROL B
>HALT

Perform a COOLSTART using one or more of the following options:

- If your system table sizes are too large, reconfigure them. Refer to Section VII of the *MPE System Operation and Resource Management Reference Manual* (32033-90005).
- If there are gaps in the logical device numbers which exceed the current number of spoolfiles, reconfigure the devices without gaps.
- If the new CST expansion firmware board is not installed on your system, decrease the system table sizes. Refer to Section 7 of the *MPE System Operations and Resource Management Reference Manual* (32033-90005).

If the COOLSTART fails, perform a RELOAD/SPREAD from the backup tapes.

Worksheets

Release V.UU.FF number: _____

SYSSTART.PUB.SYS renamed to _____

Log File Numbers _____

Manually installed products requiring I/O Configuration Changes (INSTWARN #1):

Special products requiring I/O Configuration Changes (INSTWARN #10):

DESTROY THIS WORKSHEET WHEN THE INSTALLATION IS COMPLETE

SYSDUMP \$NULL Configuration Values

DRT # for logical device 1	
LDEV # for the coldload device	
Device class for the coldload device	
LDEV # of the streams device	
Driver Name and LDEV # of any device with the same device name as the streams output device.	
EXTENDED CST	
PCB	
DISC REQUEST TABLE (QUEUE)	
SWAP TABLE	
PRIMARY MESSAGE TABLE	
SECONDARY MESSAGE TABLE	
MAX # OF CONCURRENT RUNNING PROGRAMS	
MAX CODE SEG SIZE	
MAX # OF CODES SEGMENTS/PROCESS	
MAX STACK SIZE	
MAX EXTRA DATA SEG(MENT) SIZE	
MAX # OF EXTRA DATA SEGMENTS/PROCESS	

DESTROY THIS WORKSHEET WHEN THE INSTALLATION IS COMPLETE

Passwords and UDCs

User	User Password	Account	Account Password	Group	Group Password	UDC Filename(s)
MANAGER _____		SYS _____	HPTELEX _____	PUB _____		U) _____
						A) _____
						*S) _____
MGR _____		TELESUP _____		HP35136A _____		U) _____
						A) _____
FIELD _____		SUPPORT _____		PUB _____		U) _____
						A) _____

Passwords and UDCs for HPOFFICE

User	User Password	Account	Account Password	Group	Group Password	UDC Filename(s)
MGR _____ WP _____		HPOFFICE _____		PUB _____		U) _____
				HPPROFS _____		U) _____
				HPTELEX _____		A) _____
				WP _____		
				MAILLIB _____		
MGR _____		HPWORD _____		PUB _____		U) _____
						A) _____

* If you have installed COBOLII/V, be sure to add COBUDC.PUB.SYS to your SYSTEM UDC list.

HP 3000 MPE V INSTALLATION CHECKLIST

Following is a checklist of activities needed to update your system. If you want additional information on performing an activity, please consult the appropriate section in the manual. This checklist is for an INSTALLATION only. Do not use it for any other procedure.

Caution If you are a beginning user, we recommend that you follow the instructions in the manual. This checklist is designed for those users who are experienced in installing systems on HP 3000 MPE V systems.

ACTION	REFERENCE
Verify System Version (Section 2)	
<input type="checkbox"/> Back up system	
<input type="checkbox"/> Log on	: <u>HELLO MANAGER.SYS,PUB</u> : <u>ALTUSER MANAGER;HOME=PUB</u>
<input type="checkbox"/> Verify and record current version (<i>v.uu.ff</i>) of the system	: <u>SHOWME</u> See worksheet
Installation Preparation (Chapter 3)	
<input type="checkbox"/> Set system console, limits, jobfence	: <u>CONSOLE 20</u> : <u>LIMIT 1,1</u> : <u>JOBFENCE 7</u> : <u>SHOWJOB</u>
<input type="checkbox"/> Warn users to log off	: <u>WARN@ log off message</u>
<input type="checkbox"/> Abort jobs and sessions	: <u>ABORTJOB #Jnnn</u> : <u>ABORTJOB #Snnn</u>
<input type="checkbox"/> Store to tape and purge the group USL	: <u>PURGEGROUP USL</u>
<input type="checkbox"/> Rename SYSSTART	: <u>RENAME SYSSTART, filename</u>
<input type="checkbox"/> Record new name	See worksheet

ACTION

- Terminate logging processes, if any
- Print or store to tape any system logfiles and purge them from PUB.SYS
- Print or store to tape and purge spoolfiles
- Disable data communication products, as applicable

- Disable UDC directory

- Check system configuration

Update Existing Operating System (Chapter 4)

- Build and purge a dummy file for AUTOINST
- Shut down the system
- Update from the FOS tape
"WHICH OPTION ... ?"
"SYSTEM DISC DRT"
"ANY CHANGES?"
- Set time and date

REFERENCE

:SHOWLOGSTATUS
:LOG *logid*,STOP

:LISTF LOG#*q*
:LISTF NML?#*q*

:SHOWOUT SP

:DSCONTROL *ldev*;SHUT
:MRJECONTROL SIGNOFF;*hostid*
:MPLINE *ldev*;SHUT,NOW
:IMFCONTROL STOP *imfconfigfile*
:NRJECONTROL STOP;WSID=*wsidname*
:SNACONTROL STOP;NODE=*nodename*
;TYPE=*stoptype*
:NSCONTROL STOP
:NETCONTROL STOP

:RENAME COMMAND.PUB.SYS,COMMOLD.PUB.SYS
:BUILD COMMAND.PUB.SYS
:HELLO MANAGER.SYS;HIPRI

:SYSDUMP \$NULL (See page 3-3)

:BUILD TAKESPAC;DEV=1;DISC=35000,1,1
:PURGE TAKESPAC

See page 4-2

> LOAD
UPDATE

N

See page 4-4

ACTION

Restore the Files (Chapter 5)

- | | |
|---|--|
| <input type="checkbox"/> Start AUTOINST | <u>:RUN AUTOINST</u> |
| <input type="checkbox"/> Mount the FOS tape | |
| <input type="checkbox"/> "Has a SUBSYS tape been included ... ?" | <u>Y/N</u> |
| <input type="checkbox"/> Mount the SUBSYS tape | |
| <input type="checkbox"/> Accounting structure created by AUTOINST | |
| <input type="checkbox"/> Installation jobs streamed by AUTOINST | |
| <input type="checkbox"/> Record products that need manual installation | See worksheet |
| <input type="checkbox"/> "DO YOU WANT TO INSTALL THESE PRODUCTS NOW ... ?" | <u>Y</u> |
| <input type="checkbox"/> Record products that may need additional configuration | See worksheet |
| <input type="checkbox"/> Record and remove passwords, if applicable | Use LISTDIR5 (See worksheet) |
| <input type="checkbox"/> Re-enable UDC directory | <u>:PURGE COMMAND.PUB.SYS</u>
<u>:RENAME COMMOLD.PUB.SYS,COMMAND.PUB.SYS</u>
<u>:HELLO MANAGER.SYS;HIPRI</u> |
| <input type="checkbox"/> Re-enable UDCs, if applicable | See worksheet |
| <input type="checkbox"/> Install manually installed products | See Chapter 6 |

The DUS and Coldload Tapes (Chapter 7)

- | | |
|---|--|
| <input type="checkbox"/> Disable UDC directory | <u>:RENAME COMMAND.PUB.SYS,COMMOLD.PUB.SYS</u>
<u>:BUILD COMMAND.PUB.SYS</u>
<u>:HELLO MANAGER.PUB.SYS</u> |
| <input type="checkbox"/> Restart AUTOINST | <u>:RUN AUTOINST</u> |
| <input type="checkbox"/> DUS tape created by AUTOINST
Respond to dual-density drive message, if applicable | |

REFERENCE

ACTION

- Coldload tape created by AUTOINST
- Shut down the system

- Coldstart the system from the Coldload tape.
"WHICH OPTION ... ?"
"ANY CHANGES?"
- Set time and date
- Log on

Bring the System Up (Chapter 8)

- Create 64/68/70 diagnostics, if applicable
- Install NS/3000 and Officeshare Lan/3000,
if applicable

- Configure special products flagged by
INSTWARN #10
- Log on
- Purge group CREATOR.SYS
- Re-enable your UDC directory

- Set the passwords
- Reinstate the original filename for SYSSTART
- Re-enter any modifications to
CATALOG.PUB.SYS
- Add any new SL segments and make a new
coldload tape, if necessary

REFERENCE

CONTROL A
=SHUTDOWN

> LOAD
COLDSTART
N
-

mm/dd/yy
hh/mm

:HELLO MANAGER.SYS

See page 8-1

:HELLO MANAGER.SYS
:STREAMS 10
:STREAM CONFJOB.NET.SYS

See page 8-2

:HELLO MANAGER.SYS
:PURGEGROUP CREATOR
:PURGE COMMAND.PUB.SYS
:RENAME COMMOLD.PUB.SYS,COMMAND.PUB.SYS
:HELLO MANAGER.SYS;HIPRI

See worksheet

:RENAME filename,SYSSTART

See page 8-4



ACTION

- Update configuration file, if necessary
 - "Fileset to be scanned?"
 - "OK to convert NSCONFX.NET.SYS?"
- Re-enable data communication products, as applicable

- Enable disc caching, if applicable
- Record the installation in the system logbook

REFERENCE

:RUN NMMGRVER
@.NET
Y

:LIMIT *n,nn*
:STREAMS 10
:DSCONTROL *ldev*;OPEN
:MRJECONTROL SIGNON
:MPLINE *ldev*,OPEN
:SNACONTROL START;NODE=*nodename*
:IMFCONTROL START *imfconfigfile*
:NRJECONTROL START;WSID=*wsidname*
:NETCONTROL START
:NSCONTROL START
:OUTFENCE *n*
:JOBFENCE *n*
:STARTCACHE *ldev#*

Running SYSDUMP

Introduction

Run SYSDUMP to change the configuration and create a coldload tape. The lines of the dialog with an asterisk beside them (*) are displayed only if you have data communication products configured on your system.

Running SYSDUMP

1. Mount a blank tape, write-enabled.
2. Enter the following commands and proceed through the dialog. Change the values as required.

```
:FILE T;DEV=devclass   ** Refer to worksheet **  
:FILE SYSDLIST;DEV=LP  
:SYSDUMP *T
```

If for some reason you want to abort the SYSDUMP program type:

```
:RETURN
```

ANY CHANGES? Y

SYSTEM ID = HP32033G.00.00.?

MEMORY SIZE = 3072.?

I/O CONFIGURATION CHANGES? Y

LIST I/O DEVICES? Y

LOG DEV #	DRT #	U N	C H	T Y	SUB TYPE	REC WIDTH	OUTPUT DEV	MODE	DRIVER NAME	DEVICE CLASSES		
		I A	P T	N E	TYPE SPEED							
1	nn	0	0	0	9	128	0		HIOMDSC1	DISC SYSDISC SPOOL		
6	33	0	0	32	4	66	0	S	HIOLPRTO	LP LP2608		
7	17	0	0	24	0	128	0		HIOTAPE0	TAPE DDUMP		
10	17	3	0	24	0	128	LP	JA	HIOTAPE0	JOBTAPE		
	20	8	0	0	16 0 10	960	40	20	JAID	HIOTERM1	TERM CONSOLE	
21	8	1	0	16	0	10	960	40	21	JAID	HIOTERM1	TERM
22	8	2	0	16	0	10	960	40	22	JAID	HIOTERM1	TERM
23	8	3	0	16	0	10	960	40	23	JAID	HIOTERM1	TERM

```

* LIST CS DEVICES?
LIST DEVICE DEFAULTS?
HIGHEST DRT = 327.?
LOGICAL DEVICE #?
MAX # OF OPEN SPOOLFILES = 50.?
LIST I/O DEVICES?
* LIST CS DEVICES?
TERMINAL TYPE CHANGES?
CLASS CHANGES?
LIST I/O DEVICES?
* ADDITIONAL DRIVER CHANGES?
I/O CONFIGURATION CHANGES?
SYSTEM TABLE CHANGES? Y
CST = 192.?
EXTENDED CST = nnnn.?
DST = 768.?
PCB = nnn.?.?
I/O QUEUE = 128.?
DISC REQUEST TABLE = nnn.?.?
TERMINAL BUFFERS PER PORT = 3.?
SYSTEM BUFFERS = 64.?
SWAP TABLE = nnnn.?.?
PRIMARY MESSAGE TABLE = nnn.?.?
SECONDARY MESSAGE TABLE = nn.?.?
SPECIAL REQUEST TABLE = 20.?
ICS = 1500.?
LOADER SEGMENT TABLE = 16384.?
UCOP REQUEST QUEUE = 50.?
TIMER REQUEST LIST = 255.?
BREAKPOINT TABLE = 30.?
MAX NUMBER OF USER LOGGING PROCESSES = 2.?
MAX NUMBER OF USERS PER LOGGING PROCESS = 3.?
MISC CONFIGURATION CHANGES?
LOGGING CHANGES?
DISC ALLOCATION CHANGES?
SCHEDULING CHANGES?
SEGMENT LIMIT CHANGES? Y
MAX # OF CONCURRENT RUNNING PROGRAMS = nn.?.?
MAX CODE SEGMENT SIZE = nnnnn.?.?
MAX # OF SEGMENTS/PROCESS = nn.?.?
MAX STACK SIZE = nnnnn.?.?
MAX EXTRA DATA SEG SIZE = nnnnn.?.?
MAX # OF EXTRA DATA SEGMENTS/PROCESS = nnn.?.?
STD STACK SIZE = 1200.?
SYSTEM PROGRAM CHANGES?
SYSTEM SL CHANGES?
ENTER DUMP DATE?
** Must = 32764 **

```

3. A request for the device class of the drive being used (see worksheet entry) will be displayed:

```
?time/job/pin/ldev# FOR "T" on devclass (NUM)?
```

or

```
?/job/pin/ldev# FOR "T" on devclass (NUM),WRITE RING? (Y/N)
```

Respond with:

```
(CONTROL) A  
=REPLY pin,ldev    ** Add ,Y if responding to the second message **
```

4. The following message will appear when the tape has been created.

```
END OF SUBSYSTEM  
:
```

5. Enter the following command to shutdown the system:

```
(CONTROL) A  
=SHUTDOWN
```

The system will halt with the following message:

```
SESSION ABORTED BY SYSTEM MANAGEMENT  
SHUT  
HALT 15
```

6. If the system does not halt within 60 seconds, manually halt the machine, as follows:

On a Series 37, MICRO 3000, or MICRO 3000/XE:

Turn the keyswitch to position 2 and enter (CONTROL) B. Return the keyswitch to position 1.

On all other systems:

```
(CONTROL) B  
->HALT
```

7. Write-protect the tape and remount it. Enter:

->LOAD

Follow the dialog below:

```
WHICH OPTION (COLDSTART/RELOAD/UPDATE)? COLDSTART
ANY CHANGES? N
```

Do not interrupt processing until you are prompted for the date and time. The procedure will take approximately 15 minutes to complete. If you are on G.0n.0n, the following will be displayed.

```
**WARNING** AFTER THIS POINT DO NOT INTERRUPT THE STARTUP
PROCESS UNTIL AFTER THE MESSAGE "WELCOME" APPEARS
```

```
DIRECTORY MAINTENANCE COMPLETED
LOADING OF SYSTEM FILES IN PROGRESS
LOADING OF SYSTEM FILES COMPLETED
PART 1 OF 6 COMPLETED - MEMORY RESIDENT TABLES SET UP
PART 2 OF 6 COMPLETED - SL BINDING
PART 3 OF 6 COMPLETED - SYSTEM I/O PROCESS CREATION
PART 4 OF 6 COMPLETED - DRIVER LOADING
PART 5 OF 6 COMPLETED - DISC RESIDENT TABLES SET UP
PART 6 OF 6 COMPLETED - SYSTEM PROCESS CREATION
```

```
BANK 0 DEPENDENT MEMORY USED - xxxx
```

On a Series 37 MICRO 3000, or MICRO 3000/XE:

Respond to the date prompt as requested.

```
day,date,time? (Y/N)
```

If N, respond to the prompts as indicated (use 24 hour format).

On all other systems:

Respond to the date prompt as requested.

```
DATE (M/D/Y)? mm/dd/yy
TIME (H:M)? hh/mm    ** 24 hour format **
```


Confirm the date and time as prompted.
The system will be up and running. Logon:
:HELLO MANAGER.SYS

Customer Comment Card

HP 3000 Software Installation Manual

HP Part No.: 32033-90039

R3419

We welcome your evaluation of this manual. Your comments and suggestions will help us improve our publications. Attach additional pages if necessary.

Please circle the following Yes or No:

- | | | |
|--|-----|----|
| ■ Is this manual well organized? | Yes | No |
| ■ Is the information technically accurate? | Yes | No |
| ■ Are instructions complete? | Yes | No |
| ■ Are concepts and wording easy to understand? | Yes | No |
| ■ Are the examples and pictures helpful? | Yes | No |
| ■ Are there enough examples and pictures? | Yes | No |

Additional Comments: _____

Please provide:

Name: _____ Title: _____

Company: _____ Address: _____

City: _____ State: _____ Zip Code/Country _____

Please send to:



Thank you for your assistance.

No postage is required. Just remove this card, fold so that the pre-addressed label is on the outside, secure and mail.

Tape closed

PLEASE DO NOT STAPLE

Tape closed

.....Fold here.....Fold here.....



NO POSTAGE
NECESSARY
IF MAILED
IN THE
UNITED STATES

BUSINESS REPLY MAIL
FIRST CLASS MAIL PERMIT No. 256 ROSEVILLE CA

- POSTAGE WILL BE PAID BY ADDRESSEE -
LEARNING PRODUCTS MANAGER
HEWLETT-PACKARD COMPANY R5YA
SST/SOFTWARE SERVICES AND TECHNOLOGY
8000 FOOTHILLS BOULEVARD
ROSEVILLE CA USA 95747-9987



.....Fold here.....Fold here.....

Fold here

Fold here

Detach or fold here ->

Customer Comment Card

HP 3000 Software Installation Manual

HP Part No.: 32033-90039

R3419

We welcome your evaluation of this manual. Your comments and suggestions will help us improve our publications. Attach additional pages if necessary.

Please circle the following Yes or No:

- | | | |
|--|-----|----|
| ■ Is this manual well organized? | Yes | No |
| ■ Is the information technically accurate? | Yes | No |
| ■ Are instructions complete? | Yes | No |
| ■ Are concepts and wording easy to understand? | Yes | No |
| ■ Are the examples and pictures helpful? | Yes | No |
| ■ Are there enough examples and pictures? | Yes | No |

Additional Comments: _____

Please provide:

Name: _____ Title: _____

Company: _____ Address: _____

City: _____ State: _____ Zip Code/Country _____

Please send to:



No postage is required. Just remove this card, fold so that the pre-addressed label is on the outside, secure and mail.

Thank you for your assistance.

Tape closed

PLEASE DO NOT STAPLE

Tape closed

...Fold here.....

.....Fold here....

**AIR MAIL
PAR AVION**

IBRS/CCRI No. 256



NE PAS AFFRANCHIR
NO POSTAGE
NECESSARY
IF MAILED
TO THE
UNITED STATES

INTERNATIONAL BUSINESS REPLY MAIL/REPOSE PAYEE

PERMIT No. 256

ROSEVILLE CA

- POSTAGE WILL BE PAID BY ADDRESSEE -

LEARNING PRODUCTS MANAGER R5YA

HEWLETT-PACKARD COMPANY

SST/SOFTWARE SERVICES AND TECHNOLOGY

8000 FOOTHILLS BOULEVARD

ROSEVILLE CA USA 95747-9985



.....
Fold here

.....
Fold here

If mailed from countries other than those listed, please affix postage:

- | | | | |
|-----------|---------------|--------------------|----------------------|
| Argentina | Egypt | Ireland | Portugal |
| Australia | Fiji | Northern Ireland | Spain |
| Belgium | Finland | Israel | Sweden |
| Bermuda | France | Japan | Switzerland |
| Brazil | Germany | Korea, Republic of | (incl Liechtenstein) |
| China | Great Britain | Luxembourg | Taiwan |
| Cyprus | Greece | Netherlands | Uganda |
| Denmark | Iceland | New Zealand | United Arab Emirates |
| | | Norway | |

Detach or fold here ->





Customer Order No.
32033-90039

Copyright © 1994
Hewlett-Packard Company
Printed in USA May 1994

Manufacturing Part No.
32033-90299

