

HP 3000 Commercial Systems

HP 3000 SOFTWARE UPDATE MANUAL

MPE V Platform Release 2P (Version G.2P.00)



8000 FOOTHILLS BOULEVARD, ROSEVILLE, CALIFORNIA 95747-6588

NOTICE

The information contained in this document is subject to change without notice.

HEWLETT-PACKARD MAKES NO WARRANTY OF ANY KIND WITH REGARD TO THIS MATERIAL, INCLUDING, BUT NOT LIMITED TO, THE IMPLIED WARRANTIES OF MERCHANTABILITY AND FITNESS FOR A PARTICULAR PURPOSE. Hewlett-Packard shall not be liable for errors contained herein or for incidental or consequential damages in connection with the furnishing, performance or use of this material.

Hewlett-Packard assumes no responsibility for the use or reliability of its software on equipment that is not furnished by Hewlett-Packard.

This document contains proprietary information which is protected by copyright. All rights are reserved. No part of this document may be photocopied, reproduced or translated to another language without the prior written consent of Hewlett-Packard Company.

CONVENTIONS USED IN THIS MANUAL

NOTATION

DESCRIPTION

nonitalics

Words in syntax statements which are not in italics must be entered exactly as shown. Punctuation characters other than brackets, braces and ellipses must also be entered exactly as shown. For example:

EXIT;

italics

Words in syntax statements which are in italics denote a parameter which must be replaced by a user-supplied variable. For example:

CLCSE *filename*

[]

An element inside brackets in a syntax statement is optional. Several elements stacked inside brackets means the user may select any one or none of these elements. For example:

$\left[\begin{array}{l} A \\ B \end{array} \right]$ User *may* select A or B or neither.

{ }

When several elements are stacked within braces in a syntax statement, the user must select one of those elements. For example:

$\left\{ \begin{array}{l} A \\ B \\ C \end{array} \right\}$ User *must* select A or B or C.

...

A horizontal ellipsis in a syntax statement indicates that a previous element may be repeated. For example:

[, *itemname*]...;

In addition, vertical and horizontal ellipses may be used in examples to indicate that portions of the example have been omitted.

A shaded delimiter preceding a parameter in a syntax statement indicates that the delimiter *must* be supplied whenever (a) that parameter is included or (b) that parameter is omitted and any *other* parameter which follows is included. For example:

itema [*itemb*] [*itemc*]

means that the following are allowed:

itema
itema, itemb
itema, itemb, itemc
itema, , itemc

HP Computer Museum
www.hpmuseum.net

For research and education purposes only.

CONVENTIONS (continued)

Δ When necessary for clarity, the symbol Δ may be used in a syntax statement to indicate a required blank or an exact number of blanks. For example:

```
SET[(modifier)] $\Delta$ (variable);
```

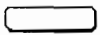
underlining When necessary for clarity in an example, user input may be underlined. For example:

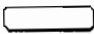
```
NEW NAME? ALPHA
```

In addition, brackets, braces or ellipses appearing in syntax or format statements which must be entered as shown will be underlined. For example:

```
LET var[[subscript]] = value
```

shading Shading represents inverse video on the terminal's screen. In addition, it is used to emphasize key portions of an example.



The symbol  may be used to indicate a key on the terminal's keyboard. For example, RETURN indicates the carriage return key.

CONTROL *char*

Control characters are indicated by CONTROL followed by the character. For example, CONTROLY means the user presses the control key and the character Y simultaneously.

CONTENTS

Section 1

INTRODUCTION

1.1 Update Process Overview	1-2
---------------------------------------	-----

Section 2

VERIFY THE SYSTEM VERSION	2-1
-------------------------------------	-----

Section 3

UPDATE PREPARATION

3.1 System Setup	3-1
3.2 Encrypted Passwords	3-2
3.3 Disable UDCs	3-3
3.4 HP Security Monitor and Preparation	3-3
3.6 System Configuration	3-8

Section 4

UPDATE EXISTING OPERATING SYSTEM

4.1 Check for MPE V/E Conversion	4-1
4.2 Ensure Free Space on System Disk	4-1
4.3 MPE V/E Shutdown	4-1
4.4 Update from the FOS Tape	4-2

Section 5

RESTORE THE FILES

5.1 Start AUTOINST	5-1
5.2 Restore the FOS Tape	5-1
5.3 Restore the SUBSYS Tape	5-2
5.4 Create the Accounting Structure	5-3
5.5 Stream Installation Files	5-3

CONTENTS (continued)

Section 6

INSTALL/UPDATE NON-AUTOINSTALLED PRODUCTS

6.1 HP WORDSERVICES.	6-1
6.2 HP WORD/3000	6-1
6.3 HP FILE/LIBRARY	6-2
6.4 INSTALL OR UPDATE HP DESKMANAGER	6-3
6.5 HP TELEX II.	6-4
6.6 HPOFFICE CONNECT to PROFS.	6-4
6.7 HPOFFICE CONNECT to DISOSS.	6-4
6.8 NEW DS DATABASES.	6-5
6.8.1 Verify Database Version	6-5
6.8.2 Create New Database	6-6
6.9 HP PREDICTIVE SUPPORT	6-7
6.10 HP RESOURCE SHARING.	6-7
6.11 HP INFORMATION ACCESS SERVER.	6-7

Section 7

THE DUS AND COLDLOAD TAPES

7.1 Restart AUTOINST	7-1
7.2 Create the DUS Tape	7-1
7.3 Create the Coldload Tape.	7-2
7.4 Coldstart the System.	7-3

Section 8

BRING THE SYSTEM UP

8.1 Create 64/68/70 Diagnostics	8-1
8.2 Convert IMAGE Databases.	8-1
8.3 Install NS/3000 & OFFICESHARE LAN/3000	8-1
8.4 Configure Special Products.	8-2
8.5 System Startup	8-3

Appendix A

RUNNING SYSDUMP	A-1
---------------------------	-----

Appendix B

RUNNING PCONVERT.	B-1
---------------------------	-----

CONTENTS (continued)

Appendix C SERIES 64/68/70 DIAGNOSTICS

C.1 Creating Diagnostics on the HP 2647F	C-1
C.1.1 Format the Disk	C-1
C.1.2 Run FLDCOPY.	C-2
C.2 Creating Diagnostics on the HP 150.	C-4
C.2.1 Format the Disk	C-4
C.2.2 Run FLDCOPY.	C-5

Appendix D IMAGE DATABASE CONVERSION

D.1 From IMAGE to TurboIMAGE.	D-1
D.1.1 Manual Method	D-1
D.1.2 Streaming Method.	D-2
D.2 From TurboIMAGE to IMAGE.	D-3
D.2.1 Manual Method	D-3
D.2.2 Streaming Method.	D-4

Appendix E ERROR MESSAGES AND WARNINGS

E.1 AUTOINST Messages	E-1
E.1.1 Error Messages	E-1
E.1.2 Warning Messages	E-10
E.2 System Errors	E-13
E.2.1 Out of Disk Space on LDEV1	E-13
E.2.2 Out of Memory or Out of BANK 0	E-14

Appendix F WORKSHEET

Worksheets	F-1
HP 3000 MPE V/E Update Checklist.	F-5

CONTENTS (continued)

Appendix G

APPENDICE FRANCAIS

G. 1 SURVOL DU PROCESSUS DE MISE A JOUR.	G-3
UTILISATION DE PCONVERT APPENDIX B	G-5
CONVERSION DES BASES IMAGE APPENDIX D	G-7
G. 2 D'IMAGE A TURBOIMAGE.	G-7
G. 2. 1 Methode par Stream.	G-8
G. 3 DE TURBOIMAGE A IMAGE.	G-9
G. 3. 1 Methode par Stream.	G-9
MESSAGES D'ERREUR ET D'ALERTE APPENDIX E.	G-10
G. 4 MESSAGES AUTOINST.	G-10
G. 4. 1 Messages d'Erreur	G-10
G. 4. 2 Messages d'Alerte	G-16
G. 5 ERREURS SYSTEME	G-19
G. 5. 1 Out of Disk Space on LDEV1.	G-19
G. 5. 2 Out of Memory or Out of BANK O.	G-20

INTRODUCTION

SECTION

1

This document provides the steps necessary to update the current Fundamental Operating System (FOS) and to update or install any purchased software subsystems (SUBSYS). Please read this document thoroughly to familiarize yourself with the process.

Before beginning the update, you will first perform a full backup and verify that your backup tapes are valid. The update will take from four to six hours to complete, depending on how many SUBSYS products have been purchased, and what type of computer and peripherals are being used. Additional time may be needed to configure new data communications products or to convert any IMAGE databases to TurboIMAGE.

NOTE

The length of time specified for any procedural step is an estimate.

The following storage media will be necessary:

- A Fundamental Operating System (FOS) tape or cartridge, supplied by Hewlett-Packard.
- An optional software subsystem (SUBSYS) tape or cartridge, supplied by Hewlett-Packard.
- One blank 2400-foot tape for the coldload (additional tapes may be necessary).
- One blank tape for the Diagnostic Utility System (DUS) tape (Do not reuse a current DUS tape).
- One blank 2400-foot tape for an extra coldload if SYSDUMP needs to be run prior to beginning the update.
- An optional floppy disk and blank tape to create the Fault Locating Diagnostics (FLD), if using a Series 64/68/70.

The Fundamental Operating System (FOS) and the optionally purchased subsystems (SUBSYS) tapes contain software that is shipped from the factory.

The FOS tape contains all software supplied as a standard part of an HP 3000 computer system. This includes the MPE operating system, system utilities, online diagnostics, and various data handling subsystems (for example, TurboIMAGE, KSAM, QUERY).

The SUBSYS tape contains the optional HP software products you have purchased.

NOTE

If running a multi-volume cartridge tape operation on a Series 37, use either the same size cartridge tapes throughout the installation, or a 600-foot cartridge before you use a 150-foot cartridge.

There are several products which are not fully installable by AUTOINST. Directions for installing these products are found in Section 6, "Install/Update Non-AUTOINSTall Products" or Section 8.4, "Configure Special Products".

If you are installing HPWord/3000, HP DeskManager, HP TELEX II, please contact your Software Engineer or Response Center before beginning the installation. The engineer will assist you with database and system configurations needs.

1.1 UPDATE PROCESS OVERVIEW

Before starting the update you must determine if your system configuration meets the requirements of the purchased products. A Subsystem Configuration Table on page 3-11 lists the required values. By running SYSDUMP \$NULL and comparing the values from the table with your system configuration you can determine if any changes are needed.

If system configuration changes are needed you'll run the SYSDUMP program, make the necessary changes, create a coldload tape and coldstart the system. Note that any devices configured on the system must be physically connected to the CPU. The system is now ready for the update.

The update process requires shutting down the system in order to bring in the new version of the Fundamental Operating System (FOS). After the update is done, you're ready to run AUTOINST. AUTOINST restores system files from the FOS tape. This takes about 25 minutes. When the restore of the system files is complete, AUTOINST asks you to whether you have a SUBSYS tape in your update package.

If you do not have a SUBSYS tape, AUTOINST streams the necessary jobstreams and creates the accounting structure. Upon completion of these jobstreams, your installation is complete. The system is now ready to come up.

If you do have a SUBSYS tape included in your package, you will respond Y to the SUBSYS tape prompt. AUTOINST will then automatically restore the contents of your SUBSYS tape and stream the necessary jobstreams to create the accounting structure. When the accounting structure is created, AUTOINST streams the installation file jobs to complete the installation of most products on the SUBSYS tape. A few products require manual steps during the installation. AUTOINST flags these non-AUTOINSTallable products and prints a list to the screen. There are two types of non-AUTOINSTallable products. The first type of product is flagged by INSTWARN #1. Products flagged by INSTWARN #1 require some manual installation before proceeding with AUTOINST. However, you can plan an installation of these products at a more convenient time. Section 6 gives instructions for the installation of these products. AUTOINST will still prompt you to stop execution of the program to manually install these products. If you do install these products later you **MUST** create a second coldload tape.

The second type of product is flagged by INSTWARN #10. These products may require product-specific configuration steps be performed following the update. You are instructed to list these products on the worksheet in Appendix A for later reference (Please refer to section 8.4, "Configure Special Products").

When you have performed the manual steps required by the special products, you are instructed to restart AUTOINST. You will be prompted to mount a tape to create the CE Diagnostics Stand-Alone (DUS) tape. This tape contains information required by your HP Customer Engineer to troubleshoot any hardware problems associated with this update. AUTOINST displays a message advising you that the DUS tape has been created. You will then remove the write ring, label the DUS tape with the date and v.uu.ff, and archive the tape.

When the DUS tape has been created, AUTOINST prompts you to mount a blank tape for the new coldload.

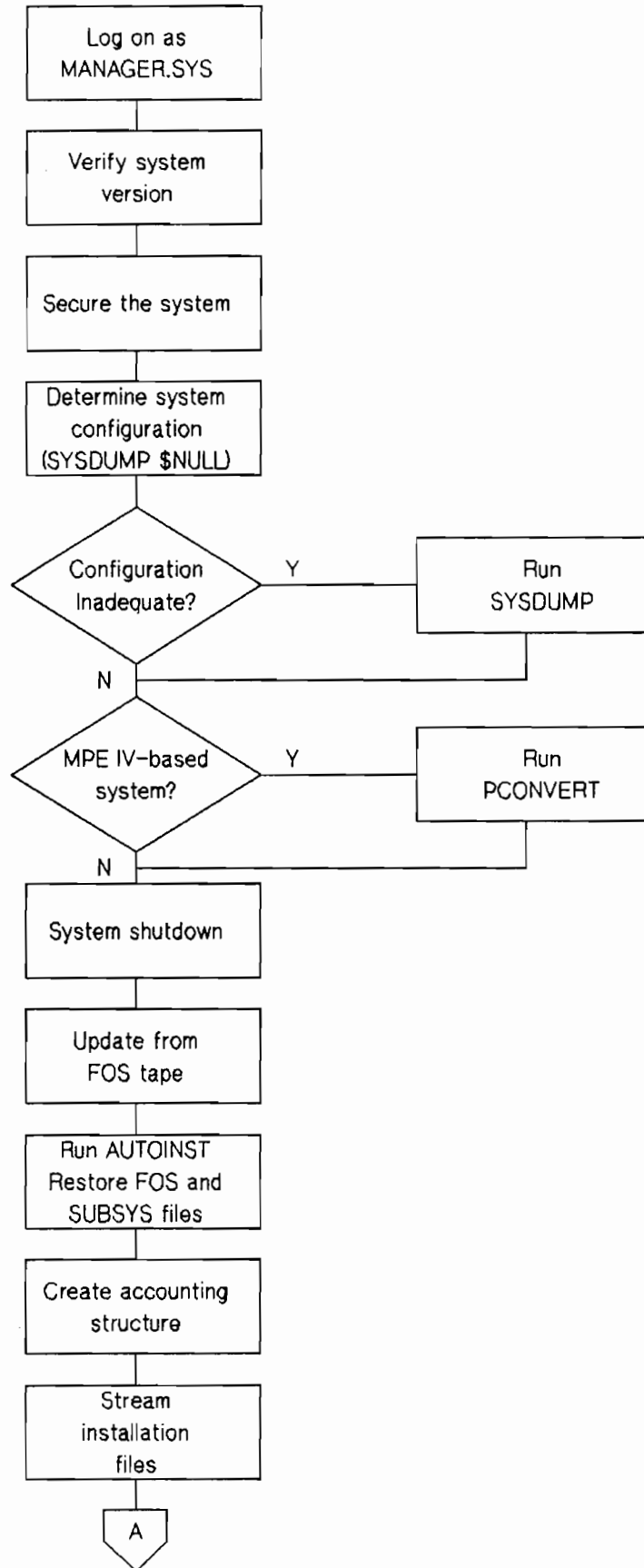
AUTOINST now invokes the SYSDUMP program. SYSDUMP compiles data from the update and incorporates segments of the USLs into the system segmented library (system SL). These calculations can take up to two hours. The tape drive will not become active until the coldload calculations are complete. When the data is compiled, SYSDUMP creates a coldload tape. AUTOINST displays a message advising you the coldload is complete. Label the coldload tape with the date and v.uu.ff and remove the write ring.

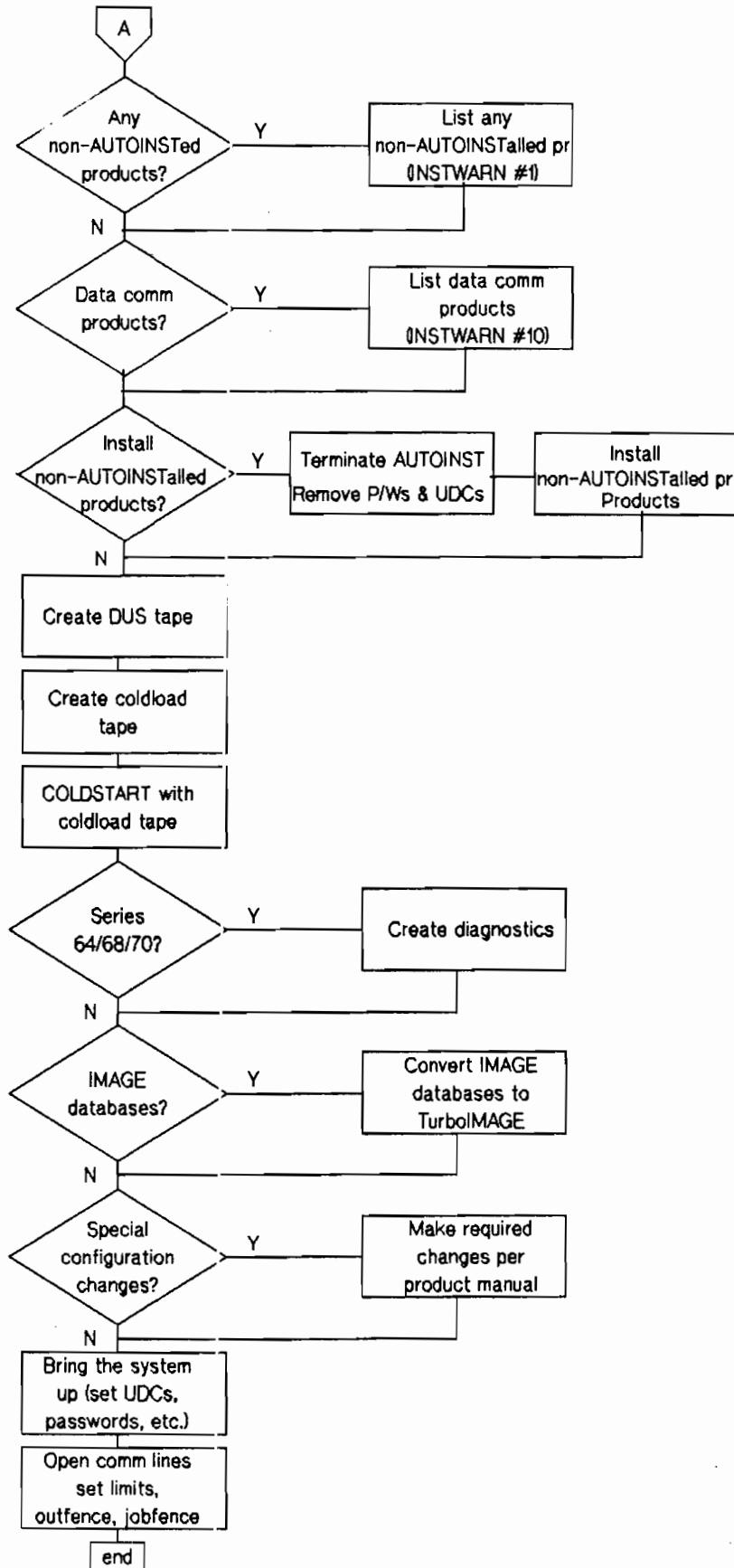
To complete the update, you will shut down the system and mount the newly-created coldload tape. Coldstart the system (using the COLD or LOAD options). The system will read the updated operating system from the coldload tape. Finally, archive the coldload tape.

At this point, the update is complete. You need only perform the "System Startup" procedures in Section 8, "Bring the System Up".

When the installation is complete, AUTOINST renames HPINSTFL.PUB.SYS to AUTOHIST.PUB.SYS. This file contains the history of the most recent installation. You may want to print this file, for archiving purposes.

The flow diagram on the following pages provides a step-by-step description of this process.







1
2



1
2



VERIFY THE SYSTEM VERSION

SECTION

2

This manual provides procedures for update or install your system with new HP 3000 software. Error messages and resolutions (Appendix F, "Error Messages and Warnings"), and a tear-out worksheet (Appendix F, "Worksheet") are provided in the appendices. Variations for procedures or displays for the Series 37 computer have been specified.

NOTE

When installing HPWORD, HP DeskManager, or HP TELEX II for the first time, it is recommended that you contact your HP Software Engineer for assistance with database configurations.

1. Ensure that the system has been properly backed up before continuing.
2. Log on and enter:

```
:HELLO MANAGER.SYS,PUB  
:ALTUSER MANAGER;HOME=PUB
```

3. Use the SHOWME command to verify the current version of the operating system:

```
:SHOWME
```

The system will display a message similar to the following:

```
USER: #S1,MANAGER.SYS,PUB (NOT IN BREAK)  
MPE VERSION: HP32033a:nn.nn. (BASE x.nn.nn)  
CURRENT: FRI, JUL 21, 1989, 7:25 AM  
LOGON: FRI, JUL 21, 1989, 6:10 AM  
CPU SECONDS: 9 CONNECT MINUTES: 75  
$STDIN LDEV: 20 $STDLIST LDEV: 20
```

4. Record the release version number (x.nn.nn) on the worksheet.



UPDATE PREPARATION

SECTION

3

Advise users in advance of the planned system down time. If you have not done a full system backup and tape verification as indicated in Section 1, "Introduction", do so now. The installation will take from two to four hours to complete, depending on the number of SUBSYS products purchased and the type of computer and peripherals being used.

WARNING

If the system segmented library (system SL) contains non-HP software the update process will remove it from the system. Please be sure you have the ability to reinstall the non-HP software after the system update.

3.1 SYSTEM SETUP

1. From the console log on and enter:

```
:HELLO MANAGER.SYS,PUB  
:CONSOLE 20  
:LIMIT 1,1  
:JOBFENCE 7  
:SHOWJOB
```

2. Issue a warning using the WARN@ command, asking users to log off. MANAGER.SYS should be the only session logged on the system. Abort any jobs or sessions still executing.

```
:WARN@ PLEASE LOG OFF  
:ABORTJOB #Jnnn ** for jobs **  
:ABORTJOB #Snnn ** for sessions **
```

3. AUTOINST requires the file FILELIST.PUB.SYS be purged. If present, purge the file:

```
:PURGE FILELIST
```

4. AUTOINST requires that the group USL be purged prior to beginning the update. Store them to tape and keep for archival purposes, then purge the group as follows:

```
:PURGEGROUP USL
```

5. If SYSSTART.PUB.SYS exists on the system, rename the file and record the new name on the worksheet.

```
:RENAME SYSSTART, filename
```

Update Preparation

6. Enter the following command to determine if user logging processes are running:

```
:SHOWLOGSTATUS
```

7. Terminate logging processes, as follows:

```
:LOG logid,STOP
```

8. Print out or record system logfile #s in PUB.SYS on the worksheet for future reference, then purge files from system. This frees up disk space that may be needed for the installation. Enter the following commands to locate the logfiles:

```
:LISTF LOG#@  
:LISTF NML?#@
```

9. Enter the following to determine if spoolfiles are present:

```
:SHOWOUT SP
```

Print or store to tape any existing spoolfiles, and purge them from the system.

NOTE

If spoolfiles are not purged from the system, the space they occupy will not be reallocated to free space.

10. Disable data communication products as applicable:

```
:DSCONTROL ldev;SHUT  
:MRJECONTROL SIGNOFF;hostid  
:MPLINE ldev,SHUT,NOW  
:IMFCONTROL STOP imfconfigfile  
:NRJECONTROL STOP;WSID=wsidname  
:SNACONTROL STOP;NODE=nodename;TYPE=stoptype  
:NSCONTROL STOP  
:NETCONTROL STOP
```

3.2 ENCRYPTED PASSWORDS

AUTOINST cannot determine passwords that have been encrypted. If AUTOINST detects an encrypted password during the installation process, AUTOINST will prompt you for the correct password. If you do not supply the correct password in three tries, AUTOINST will change the password to stream the job(s).

The user, group and account containing changed passwords will be written to the file AUTOHIST.PUB.SYS. At the end of the installation, you can refer to AUTOHIST to determine which user, group, and account passwords were changed. You will need to supply a new password for these users, groups, and accounts during "System Startup".

3.3 DISABLE UDCS

1. COMMAND.PUB.SYS contains the directory of all UDCs set on your system. If you have any UDCs set, you must disable them before running AUTOINST. To disable your UDCs, save your command file and build an empty command file as follows:

```
:RENAME COMMAND.PUB.SYS,COMMOLD.PUB.SYS  
:BUILD COMMAND.PUB.SYS
```

A system warning will appear on the screen. Ignore the message. Later in the installation process, you will be reminded to reenable your UDCs.

2. AUTOINST creates a logfile called HPINSTFL. If this file exists on your system, it means that AUTOINST did not complete during a previous update or add-on. In order to start AUTOINST at the beginning, purge the HPINSTFL file as follows:

```
:PURGE HPINSTFL.PUB.SYS
```

After purging the HPINSTFL file follow the steps described in 3.5 "System Configuration" of this section if you do not have the HP Security Monitor product, otherwise continue as follows.

3.4 HP SECURITY MONITOR AND PREPARATION

If you have the HP Security Monitor product on your system, follow steps 1 and 2 to set the global options and steps 3 and 4 to suspend command disabling.

1. If the USERPASS=REQ option has been used on any of the USERS shown on the worksheet, you must change it to OPT. Do this by entering the following command:

```
:ALTUSER username;USERPASS=OPT
```

Be sure to note on the worksheet which USERS have had the REQ option removed.

2. If the HP Security Monitor is installed, ensure the following settings are correct before running AUTOINST.

```
:RUN SECCONF.PUB.SYS
```

3. Respond to the prompts in the dialog as shown:

HP SECURITY MONITOR HP 30392A.nn.nn (C) HEWLETT-PACKARD CO., 1986

MAIN MENU

- 0. Exit
- 1. Global Security Options
- 2. Device Logging and Access
- 3. Command Logging and Access

Please enter your choice (0-3) 1

GLOBAL SECURITY OPTIONS

- 0. Exit to Main Menu
- 1. Password Encryption
- 2. Minimum Length for Passwords
- 3. Maximum Invalid Logons per Device
- 4. Mandatory Password Prompt
- 5. Idle Session Timeout
- 6. Generic Logon Message Option
- 7. UDC Failure Termination Option
- 8. File Open Logging Option
- 9. Global User Password Expiration
- 10. Batch Submission Security Options
- 11. Assurance of Auditability Option
- 12. File Maximum Protection Option

Please enter your choice (0-12) 10

STREAM MENU

- 0. Exit to Global Security Menu
- 1. Embedded Password Disallowed Option
- 2. Cross Streaming Restriction Option
- 3. Stream Privilege Option

Please enter your choice (0-3) 1

You have just selected the function to configure whether embedded passwords in job card are allowable. When this option is ON, MPE will reject any !JOB command with password(s) embedded in it.

EMBEDDED PASSWORD DISALLOWED is currently OFF (disabled).

Please specify your new choice (ON/OFF): OFF
EMBEDDED PASSWORD DISALLOWED is now DISABLED

STREAM MENU

- 0. Exit to Global Security
- 1. Embedded Password Disallowed Option
- 2. Cross Streaming Restriction Option
- 3. Stream Privilege Option

Please enter your choice (0-3): 2

You have just selected the function to configure whether streaming of other people's jobs is allowable. When this option is ON, a person will not be allowed to stream another person's job, unless specifically authorized.

Cross Streaming Restriction is currently OFF (i.e., cross stream allowed).

Please specify your new choice (ON/OFF): OFF
CROSS STREAM RESTRICTION is now DISABLED

STREAM MENU

- 0. Exit to Global Security Menu
- 1. Embedded Password Disallowed Option
- 2. Cross Streaming Restriction Option
- 3. Stream Privilege Option

Please enter your choice (0-3): 0

GLOBAL SECURITY OPTIONS

0. Exit to Main Menu
1. Password Encryption
2. Minimum Length for Passwords
3. Maximum Invalid Logons per Device
4. Mandatory Password Prompt
5. Idle Session Timeout
6. Generic Logon Message Option
7. UDC Failure Termination Option
8. File Open Logging Option
9. Global User Password Expiration
10. Batch Submission Security Options
11. Assurance of Auditability Option
12. File Maximum Protection Option

Please enter your choice (0-12): 12

You have just selected the function to configure whether a newly created file is to be maximally protected. When this option is ON, the default access for new files will be set as: (R,W,X,L,A: CR) only.

MAXIMUM PROTECTION is currently OFF (disabled).

Please specify your new choice (ON/OFF): OFF

MAXIMUM PROTECTION is now DISABLED

GLOBAL SECURITY OPTIONS

0. Exit to Main Menu
1. Password Encryption
2. Minimum Length for Passwords
3. Maximum Invalid Logons per Device
4. Mandatory Password Prompt
5. Idle Session Timeout
6. Generic Logon Message Option
7. UDC Failure Termination Option
8. File Open Logging Option
9. Global User Password Expiration
10. Batch Submission Security Options
11. Assurance of Auditability Option
12. File Maximum Protection Option

Please enter your choice (0-12): 0

MAIN MENU

- 0. Exit
- 1. Global Security Options
- 2. Device Logging and Access
- 3. Command Logging and Access

Please enter your choice (0-3) 0

Your security configuration changes will now take effect.

Thank you for using the Security Configurator.

4. Run SECCONF to display the RESET menu for HP Security Monitor:

:RUN SECCONF,RESET

5. Respond to the prompts in the dialog as shown:

HP SECURITY MONITOR HP30392A.nn.nn (C) HEWLETT-PACKARD CO., 1986

RESET MENU

- 0. Exit
- 1. Hard Reset
- 2. Soft Reset - Reset Global Options
- 3. Soft Reset - Reset Command Options
- 4. Soft Reset - Reset Device Passwords
- 5. Suspend - Suspend Command Disabling

Please enter your choice (0-5): 5

WARNING -- This option will temporarily suspend the command disabling feature.
To re-enable the function either RUN SECCONF again or restart the system.

Proceed with the SUSPEND (YES/NO)? YES

Suspend - Command Disabling now Suspended.

Your security configuration changes will now take effect.

Thank you for using the Security Configurator.

END OF PROGRAM

It is not necessary to re-enable the command disabling function at the end of the installation. HP

Security Monitor is automatically enabled following startup of the system.

3.5 SYSTEM CONFIGURATION

The system configuration may need to be changed to accommodate certain purchased products. Determine the current configuration by running SYSDUMP \$NULL.

- The following depicts the console dialog of SYSDUMP \$NULL. Necessary responses are highlighted. Other prompts require only a RETURN. SYSDUMP \$ NULL configuration values are also highlighted. Record all SYSDUMP \$ NULL configuration values on the worksheet located in Appendix F. Dialog lines marked with an asterisk (*) are displayed only if you have data communications products configured on your system.

:SYSDUMP \$NULL

```

ANY CHANGES? Y
SYSTEM ID = HP32033G.00.00.?
MEMORY SIZE = 3072.?
I/O CONFIGURATION CHANGES? Y
LIST I/O DEVICES? Y
    
```

LOG DEV #	DRT #	U N	C H	T Y	SUB TYPE	TERMINAL TYPE	SPEED	REC WIDTH	OUTPUT DEV	MODE	DRIVER NAME	DEVICE CLASSES
1	nn	0	0	0	9			128	0		HIOMDSC1	DEVICE SYSDISC SPOOL
6	33	0	0	32	4			66	0	S	HIOLPRT0	LP LP2608
7	17	0	0	24	0			128	0		HIOTAPE0	TAPE DDUMP
10	17	3	0	24	0			128	LP	JA	HIOTAPE0	JOBTAPE
20	8	0	0	16	0	10	960	40	20	JAID	HIOTERM1	TERM CONSOLE
21	8	1	0	16	0	10	960	40	21	JAID	HIOTERM1	TERM
22	8	2	0	16	0	10	960	40	22	JAID	HIOTERM1	TERM
23	8	3	0	16	0	10	960	40	23	JAID	HIOTERM1	TERM

•
•
•

```

* LIST CS DEVICES?
LIST DEVICE DEFAULTS?
HIGHEST DRT = 327.?
LOGICAL DEVICE #?
MAX # OF OPEN SPOOLFILES = 50.?
LIST I/O DEVICES?
* LIST CS DEVICES?
TERMINAL TYPE CHANGES?
CLASS CHANGES?
LIST I/O DEVICES?
* ADDITIONAL DRIVER CHANGES?
I/O CONFIGURATION CHANGES?
SYSTEM TABLE CHANGES? Y
CST = 192.?
EXTENDED CST = nnnn.?
DST = 768.?
PCB = nnn.?
I/O QUEUE = 128.?
DISC REQUEST QUEUE = nnn.?
TERMINAL BUFFERS PER PORT = 3.?
SYSTEM BUFFERS = 64.?
SWAP TABLE = nnnn.?          ** must be >=8 X PCB **
PRIMARY MESSAGE TABLE = nnn.?
SECONDARY MESSAGE TABLE = nn.?
SPECIAL REQUEST TABLE = 20.?
ICS = 1500.?
LOADER SEGMENT TABLE = 16334.?
UCOP REQUEST QUEUE = 50.?
TIMER REQUEST QUEUE = 255.?
BREAKPOINT TABLE = 30.?
MAX NUMBER OF USER LOGGING PROCESSES = 2.?
MAX NUMBER OF USERS PER LOGGING PROCESS = 3.?
MISC CONFIGURATION CHANGES?
LOGGING CHANGES?
DISC ALLOCATION CHANGES?
SCHEDULING CHANGES?
SEGMENT LIMIT CHANGES? Y
MAX # OF CONCURRENT RUNNING PROGRAMS = nn.?
MAX CODE SEGMENT SIZE = nnnnn.?
MAX # OF CODE SEGMENTS/PROCESS = nn.?
MAX STACK SIZE = nnnnn.?
MAX EXTRA DATA SEGMENT SIZE = nnnnn.?          ** Must = 32764 **
MAX # OF EXTRA DATA SEGMENTS/PROCESS = nnn.?
STD STACK SIZE = 1200.?
SYSTEM PROGRAM CHANGES?
SYSTEM SL CHANGES?
ENTER DUMP DATE?
ILLEGAL TAPE FILE OPEN PARAMETERS          ** Normal SYSDUMP $NULL **
                                           ** Termination      **

ABORT :SYSDUMP.PUB.SYS.%5.%174
PROGRAM ERROR #18 :PROCESS QUIT

PROGRAM TERMINATED IN AN ERROR STATE. (CIERR 976)

```

Update Preparation

1. Compare your current system configuration recorded on the worksheet, against the following values. If your configuration does not meet these requirements you need to run SYSDUMP \$ NULL to make the configuration changes. Note the necessary values on the worksheet.

- The configured values for the PRIMARY MESSAGE TABLE and SECONDARY MESSAGE TABLE should be greater than or equal to the number of entries in the PCB table.
- The purchased subsystems listed below require these specific values:

Subsystem Configuration Specifications Table

Subsystems	Specific Subsystem Requirements						
	>=255	>=8xPCB					
DISC CACHE/3000	>=255	>=8xPCB					
HPDRAW/3000 HPMAP DSG/3000 HPEASYCHART/3000 HP GRAPHICS CURATOR/3000			>=16384	>=30			
Figure files for HPWORD or TDP/3000			>=16384	>=63			
VISICALC/3000			>=16384				
HP FORTRAN 77/3000			>=16384	>=5			
HP Business BASIC/3000			>=16384	>=5			
HP DESK PLUS			>=16384	>=30			
HP Business Report Writer/V			>=16384	>=64			
DB Change			>=16384				
HP Easytime					>=70	>=20	>=240
<p>DISC REQUEST TABLE = nnn.? _____ ↑</p> <p>SWAP TABLE = nnnn.? _____ ↑</p> <p>MAX CODE SEG SIZE = nnnnn.? _____ ↑</p> <p>MAX # OF EXTRA DATA SEGMENTS/PROCESS = nnn.? _____ ↑</p> <p>PCB = nnn.? _____ ↑</p> <p>MAX # OF CONCURRENT RUNNING PROGRAMS = nn.? _____ ↑</p> <p>EXTENDED CST = nnnn.? _____ ↑</p>							

2. If your system configuration does not satisfy these requirements, run the SYSDUMP \$ NULL program in Appendix A and make the necessary configuration changes. Create a coldload tape and coldstart the system.



4.1 CHECK FOR MPE V CONVERSION

If you are updating from an MPE version where the *v* in the *v.uu.ff* is C, D, E, or F, the present operating system must be converted to accommodate the new format. Refer to Appendix B, "Running PCONVERT" for the conversion and system shutdown.

If you are running a version prior to C.n1.00 or D.n1.00, contact your Response Center.

If you are running version G.0n.0n, do NOT run PCONVERT. Running PCONVERT, will force you into a reload.

4.2 ENSURE FREE SPACE ON THE SYSTEM DISK

AUTOINST requires a minimum of 17,000 sectors of free space on the system disk to bring in the system files from the FOS tape. Follow the steps below to ensure this free space.

1. Build a dummy file of 17,000 sectors, as follows:

:BUILD TAKESPAC;DEV=1;DISC=17000,1,1

If there is not enough free space on the system disk, store files to tape and purge them. Other alternatives are presented in Appendix E, "Error Messages and Warnings."

2. Purge the dummy file:

:PURGE TAKESPAC

CAUTION

If you do not ensure the 17,000 sectors of free disk space, AUTOINST will fail and you may be forced into a RELOAD.

4.3 MPE V SHUTDOWN

1. Shut down the system:

CONTROL A
=SHUTDOWN

If the system does not halt within 60 seconds, manually halt the system as follows:

On a Series 37, MICRO 3000, or MICRO 3000/XE:

To shut down the system, enter:

CONTROL B

On all other systems:

To shut down the system, enter:

CONTROL B
->HALT

4.4 UPDATE FROM THE FOS TAPE

For all versions of MPE, update the operating system as follows:

1. Mount the FOS tape and put the tape drive online.
2. Enter:

->LOAD

3. Respond to the dialog as shown below. (If the DRT number given by the system for LDEV 1 differs from the worksheet entry, use the value from the worksheet.)

WHICH OPTION (COLDSTART/RELOAD/UPDATE)? UPDATE

SYSTEM DISC DRT = ~~xxx~~(MIN=8, MAX=127)? ** S/39, 4X, 58 **

OR

SYSTEM DISC DRT = ~~xxx~~(MIN=8, MAX=511)? ** S/37, 6X, 70 **

ANY CHANGES? N

****WARNING**** AFTER THIS POINT DO NOT INTERRUPT THE STARTUP
PROCESS UNTIL AFTER THE MESSAGE " WELCOME " APPEARS

DIRECTORY MAINTENANCE COMPLETED
LOADING OF SYSTEM FILES IN PROGRESS
LOADING OF SYSTEM FILES COMPLETED
PART 1 OF 6 COMPLETED - MEMORY RESIDENT TABLES SET UP
PART 2 OF 6 COMPLETED - SL BINDING
PART 3 OF 6 COMPLETED - SYSTEM I/O PROCESS CREATION
PART 4 OF 6 COMPLETED - DRIVER LOADING
PART 5 OF 6 COMPLETED - DISC RESIDENT TABLES SET UP
PART 6 OF 6 COMPLETED - SYSTEM PROCESS CREATION

BANK 0 DEPENDENT MEMORY USED -~~xxxxxxx~~

Update Existing Operating System

On a Series 37, MICRO 3000, or MICRO 3000/XE:

Respond to the date prompt as requested. (If you do not respond Y or N within 60 seconds, the system by default, assumes the displayed time and date to be correct.)

```
day,date,time? (Y/N)
```

If N, respond to the prompts as indicated (use 24 hour time).

On all other systems:

Respond to the date prompt as requested.

```
DATE (M,D,Y)? mm/dd/yy  
TIME (H:M)? hh:mm ** 24 hour format **
```

Confirm the date and time as prompted.

4. The system will be up and running and will display the following message:

```
THE MPE OPERATING SYSTEM HAS JUST BEEN INSTALLED.  
TO BEGIN THE INSTALLATION OF HP-SUPPORTED SOFTWARE,  
ENTER:  
  
:RUN AUTOINST.PUB.SYS
```

Please continue with Section 5, "Restore the Files".

RESTORE THE FILES

SECTION

5

The AUTOINST program sets up the environment necessary for the installation and will install most HP-purchased software products.

5.1 START AUTOINST

1. Enter:

```
:RUN AUTOINST
```

5.2 RESTORE THE FOS TAPE

1. Mount the FOS tape as requested:

```
MOUNT THE FOS TAPE AND PUT THE TAPE DRIVE ONLINE.  
THE FILES FROM THE FOS TAPE WILL NOW BE RESTORED.
```

```
***** PLEASE STAND BY *****
```

```
THE FOS TAPE FILES ARE BEING RESTORED.
```

2. The tape drive will be active, then inactive for about fifteen minutes while the restore file is being verified. When the tape drive becomes active and the files have been restored, the following message will be displayed:

```
THE FILES FROM THE FOS TAPE WERE SUCCESSFULLY RESTORED.
```

3. Dismount the FOS tape.

5.3 RESTORE THE SUBSYS TAPE

When the restore of the FOS files is complete, AUTOINST prompts you, as follows:

```
HAS A SUBSYS TAPE BEEN INCLUDED IN YOUR  
INSTALLATION PACKAGE (Y/N)?  
>>
```

If you do not have a SUBSYS tape included in your package, and you respond N, AUTOINST will continue, automatically, to create the accounting structure (please see 5.4, "Create the Accounting Structure").

1. If you have a SUBSYS tape in your package, respond Y and mount it as requested:

```
MOUNT THE SUBSYS TAPE AND PUT THE TAPE  
DRIVE ONLINE. THE HP-SUPPORTED SOFTWARE  
FILES WILL BE RESTORED.  
  
**** PLEASE STAND BY ****  
THE HP-SUPPORTED SOFTWARE FILES ARE BEING RESTORED.  
  
THE SUBSYS HAS BEEN SUCCESSFULLY RESTORED.
```

The time required to restore the SUBSYS tape is dependent on the number of products purchased, and may take up to 30 minutes (per 2400-foot reel).

5.4 CREATE THE ACCOUNTING STRUCTURE

1. AUTOINST automatically creates the accounting structure. MPE displays logon, logoff, and TELLOP messages of the accounting structure jobs during this (approximately) fifteen-minute process.

```

BEGIN PROCESSING ACCOUNTING STRUCTURE JOB.
THE ACCOUNTING STRUCTURE JOB WILL NOW BE STREAMED.
.
.
.
SUCCESSFUL COMPLETION OF SUPACCT!
.
.
.
THE ACCOUNTING STRUCTURE HAS BEEN SUCCESSFULLY CREATED.

```

5.5 STREAM INSTALLATION FILES

AUTOINST automatically streams installation jobs which complete the installation of most products. AUTOINST displays the following message. Progress messages are displayed, indicating completion of each job.

```

BEGIN PROCESSING INSTALLATION FILES.
PROCESSING n INSTALLATION FILES.
. . .      ** where number of dots equals value of 'n' **
THE INSTALLATION JOBS WILL NOW BE STREAMED.

```

When all installation jobs are complete, AUTOINST displays a verification message, as follows:

```

ALL PRODUCT INSTALLATION JOBS HAVE BEEN STREAMED SUCCESSFULLY.

```

Restore the Files

1. If you have purchased any software which requires manual installation, a warning message (INSTWARN #1) listing those products will be displayed. Record these products on the worksheet.

NOTE

If the warning message, INSTWARN #1, does not appear, follow the steps described in "Create the DUS Tape" of Section 7, "The DUS and Coldload Tapes", otherwise proceed as outlined below.

```
*WARNING--THIS PROGRAM CANNOT INSTALL THE PRODUCTS
LISTED BELOW.  IF YOU WANT TO CONTINUE WITH AUTOINST,
THE COLDLOAD TAPE WILL NOT INCLUDE THESE PRODUCTS.
(INSTWARN #1)
.
.
.
DO YOU WANT TO INSTALL THESE PRODUCTS NOW AND CONTINUE
WITH AUTOINST AFTER INSTALLING THESE PRODUCTS (Y/N)?
>>
```

CAUTION

Be sure to install **all** of the products which require manual steps now, or install **all** of these products after installation. You can not install a few now and a few later.

If you choose to install these products after completing this installation, you will then need to create a second coldload tape.

To install these products now, reply Y. If you do not wish to install these products now reply N and follow the steps described in Section 7, "The DUS and Coldload Tapes".

2. A second warning message (INSTWARN #10) will list any special products which need further attention. Record these products on the worksheet. You will be reminded to make the necessary configuration changes at the end of the installation.

```
*WARNING--THE FOLLOWING PRODUCTS MAY REQUIRE
CONFIGURATION CHANGES. HOWEVER, THIS WILL NOT AFFECT
THE SOFTWARE INSTALLATION FOR THESE PRODUCTS. THE
CONFIGURATION CHANGES MAY BE DONE AFTER COMPLETION OF
THE INSTALLATION.
(INSTWARN #10)
```

3. If you have replied **Y**, AUTOINST will stop to allow for the installation of manually installed products after displaying the following message:

```
PLEASE CONTINUE WITH "MANUALLY INSTALLED PRODUCTS"
IN THE INSTALLATION MANUAL.
```

```
END OF PROGRAM
```

4. Some passwords must be removed before you install the non-AUTOINSTALLED products. Remove the passwords from the user, group, and accounts listed on the worksheet. Use the LISTDIR5 utility to determine the passwords. The syntax is provided on the worksheet with space to record the passwords. If you need assistance with LISTDIR5, refer to the *MPE V Utilities Reference Manual* (P/N 32033-90008).
5. Re-enable your UDC directory as follows:

```
:PURGE COMMAND.PUB.SYS
:RENAME COMMOLD.PUB.SYS,COMMAND.PUB.SYS
```

6. Even though you have re-enabled your UDC directory, some UDCs must be disabled before you install the manually installed/updated products. Be sure to disable the UDCs **BEFORE** attempting to install any of the products listed on the INSTWARN #1 message.

Use the SHOWCATALOG command to determine the UDC filenames for the users, groups, and accounts listed on the worksheet. If any UDCs are enabled, disabled them and record the UDC filename in the space provided. The syntax for disabling the UDCs is provided on the worksheet.

Remember to re-enable the UDCs before you run AUTOINST again.



The following subsections provide installation procedures for the products listed in INSTWARN #1. Install all of the products listed on the worksheet.

6.1 HP WORDSERVICES

HP WordServices is basically auto-installable. However, there are some commands that must be processed before the product is fully functional.

Log on to the system (use any convenient account). Use an editing program to print out the file `README.JFPS.HPOFFICE`. This file will give you the information you need to complete the installation. It will also provide you with instructions for printing the manual, *HP WordServices Administrator's Guide*.

6.2 HP WORD/3000

To install HP Word/3000, perform the following steps.

1. Log on:

`:HELLO MANAGER.SYS`

2. The American version is installed automatically by AUTOINST as the default. To install the British version, an additional job must be streamed, as follows:

`:STREAM INWORD2.HP32120.HPPL85 ** British Version **`

3. If disk space is limited and the default language interface only is required, enter the following to delete unnecessary files:

`:STREAM INWORD4.HP32120.HPPL85`

4. If disk space is limited, HPWORD may be reduced in two ways:

- If the self-paced training course is not required, enter:

`:PURGEACCT HPWORD`

- If an HP2680 or HP2688 laser printer will not be used, purge environment files by entering:

`:STREAM INWORD3.HP32120.HPPL85`

Install/Update Non-AUTOINSTALLED Products

5. To create a new user for the self-paced training course, log on and enter:

```
:HELLO MGR.HPWORD  
:NEWPUPIL name
```

The user *name* with the home group of *name* will be created in the HPWORD account. The training files, in PUB.HPWORD, will be copied to the *name* group.

6. If this is a new installation, create a configuration file. Log on and enter:

```
:HELLO WP.HPOFFICE,WP  
:GETRIN WORDRIN  
RIN nn  
:RUN HPWORD.PUB.SYS,WORDUTIL
```

Respond to the dialog as follows:

```
HP32120A.05.04 HPWORD (C) Hewlett-Packard Co. 1986  
Select task: CONF  
File name (WORDCONF.WP.HPOFFICE) RETURN  
  
WORDCONF.WP.HPOFFICE does not exist or cannot be accessed.  
You are now creating a new configuration.  
  
HPWORD RIN: nn ** 2-digit RIN obtained in the GETRIN command **  
>S  
File Name (WORDCONF.WP.HPOFFICE) RETURN  
Configuration file saved.  
Any new queue files needed, have been created.  
>E  
Select task: EXIT  
  
END OF PROGRAM  
:
```

7. Refer to the *HPWORD Administration Manual* (P/N 32120-90061) for other product configuration details.

6.3 HP FILE/LIBRARY

To install HP File/Library, perform the following steps.

1. Log on and enter:

```
:HELLO MGR.HPOFFICE  
:SETCATALOG LIBUDCS.MAILLIB.HPOFFICE,otherudcs,...
```

Include all other UDC files to be enabled.

2. To complete the installation, log on and enter:

```
:HELLO MANAGER.SYS  
:SETCATALOG LIBUDCS.MAILLIB.HPOFFICE,otheruds...
```

Include all other UDC files to be enabled.

6.4 INSTALL OR UPDATE HP DESKMANAGER

The HP DeskManager software is now installed on your system, however before attempting to use the product, there are some steps that must be completed.

- If you are installing HP DeskManager for the first time you must create and configure your databases. Refer to Chapters 8 and 9 of the *HP DeskManager Administration* manual (P/N 36570-90134) for details on how to do this.
- The following UDC files are supplied with HP DeskManager:

```
OPERUDC.MAILLIB.HPOFFICE - this holds the operator commands  
MAILUDC.MAILLIB.HPOFFICE - this holds the user commands
```

The level at which these UDCs are set depends upon the guidelines followed at your site; however, Hewlett-Packard recommends setting the operator commands at the user level for the user MGR.HPOFFICE. To do this, enter the following commands:

```
:HELLO MGR.HPOFFICE,MAILEB  
:SETCATALOG OPERUDC.MAILLIB.HPOFFICE
```

Remember to include all other UDCs that are to be set at the same level in the SETCATALOG command.

The following three items may apply to your system. Please read them and follow the instructions, if they are applicable.

- The American version of the product is supplied as default, however, if a British version is to be installed, enter the command:

```
:STREAM UKDICT.MAILJOB.HPOFFICE
```

- If you are running HP DeskManager on a **standalone** system and Distributed Systems (DS) or Network Services (NS) are NOT installed, enter the command:

```
:STREAM DSNSEGS.MAILJOB.HPOFFICE
```

- If you are upgrading an existing version of HP DeskManager, the old HP DeskManager job stream files will be overwritten during the installation process. If you have customized any of these job stream files, you must re-apply your changes to the new files. **DO NOT** overwrite the new files with your old files. For a complete list of these job stream files, please refer to Chapter 22 of the *HP DeskManager Administration* manual (P/N 36570-90134).

6.5 HP TELEX II

To install HP Telex II, perform the following steps. If you are updating from an MPE version prior to G.02.00, one database TELBAS.HPTELEX.HPOFFICE must be converted from Image to TurboIMAGE. Refer to the *TurboIMAGE Reference Manual* (P/N 32215-90050) for details.

1. Log on:

```
:HELLO FIELD.HPPL85,HP36572
```

2. The American version of HP Telex will be installed automatically. British users must stream an additional job, as follows:

```
:STREAM INTELEX1
```

A message will be displayed indicating completion of the job.

3. Enable UDCs for HP Telex II users as follows:

```
:HELLO MGR.HPOFFICE,HPTELEX  
:SETCATALOG TELUDC,otherudcs...
```

4. Refer to the *Administrator's Guide to HP Telex II* (P/N 36572-90013) for configuration instructions.

6.6 HPOFFICE CONNECT TO PROFS

To install HPOffice Connect to PROFS, perform the following steps.

1. Log on and enter:

```
:HELLO MGR.HPOFFICE,HPPROFS  
:SETCATALOG PROFSUDC,otherudcs...
```

2. Refer to the *Administrator's Guide to HPOFFICE Connect to PROFS* (P/N 27521-90001) for configuration instructions.

6.7 HPOFFICE CONNECT TO DISOSS

If you are installing HP OfficeConnect to DISOSS on a GATEWAY system (an HP 3000 physically connected to an IBM mainframe), perform the following steps:

1. Log on:

```
:HELLO MGR.HPOFFICE
```

Set the UDCs with the following command:

:SETCATALOG DIAUDC.DIALIB.HPOFFICE,otherudcs;ACCOUNT

2. If you have renamed your SYSSTART.PUB.SYS file during system preparation, modify the renamed file by adding the following line:

:ALLOW @.@;COMMANDS=L(XG

After the original, renamed SYSSTART file has been modified, purge the new SYSSTART file which DISOSS created.

NOTE

Do not purge the SYSSTART file if:

- * The original SYSSTART file was not renamed.
- * There was no original SYSSTART file on the system.

3. Refer to the *Administrator's Guide to HPOFFICE Connect to DISOSS* (P/N 27515-90001) for any configuration changes.

6.8 NEW DS DATABASES

X.25/3000 requires a new version of a network configurator database. If your database is old (or if a database does not exist), you need to create a new version by following the steps in this section.

6.8.1 Verify Database Version

To determine if your database is an old or new version, follow these steps:

1. Logon:

:HELLO MANAGER.SYS

2. Check to see if a network configurator database exists:

:LISTF NET@.PUB.SYS,2

3. If the files NETCON, NETCON01, NETCON02, etc. appear, the database exists. Check the following table to determine the database version:

File Name	EOF Old Version	EOF New Version
NETCON	5	6 (IMAGE) 9 (TurboIMAGE)
NETCON04	137	187
NETCON05	16	85

4. If your database is new, you are all done. If your database is an old version, or if it does not exist, create a new version as explained on the following page.

6.8.2 Create New Database

To create a new database, continue as follows:

NOTE

To transfer the database contents from the old to the new version, make sure you have a DBSTORE tape.

1. Purge the old database:

```
: RUN DBUTIL.PUB.SYS  
>>PURGE NETCON  
>>EXIT
```

2. Create the new version:

```
: FILE DBSTEXT=K20K131A.HP30131.HPPL87  
: RUN DBSCHEMA.PUB.SYS; PARM=1  
: RUN DBUTIL.PUB.SYS  
>>CREATE NETCON/NETDBMGR  
>>EXIT
```

NOTE

Do not transfer the NETCON files to another system. These files are system dependent.

6.9 HP PREDICTIVE SUPPORT

If you are **NOT** updating HP Predictive Support from A.02.03 to A.02.04, the installation must be performed by your Hewlett-Packard Customer Engineer.

If you **ARE** updating from A.02.03 to A.02.04, enter the following:

```
:HELLO MGR.TELESUP,HP51467  
:RUN PSCONFIG.HP51467.TELESUP
```

to confirm the configuration of HP Predictive for your system. Make any necessary changes.

```
:STREAM FIRSTRUN.HP51467.TELESUP
```

If you have NetAssure coverage, you must also order and install NetWork Predictive (P/N HP51468B).

Refer to the *Predictive Support User's Guide* (P/N 51467-90001) for further information on the configuration and use of HP Predictive Support.

6.10 HP RESOURCE SHARING

To install Resource Sharing enter the following:

```
:STREAM JPDINSTL.PPC.SYS
```

Please refer to the *Resource Sharing for MPE V Manual* (P/N 32597-90079) for detailed instructions on configuring Resource Sharing.

NOTE

Resource Sharing is not fully configured until the job CONFJOB.NET.SYS has completed successfully. Do not stream this job now. Stream CONFJOB when requested to do so in section 8.

6.11 HP INFORMATION ACCESS SERVER

To install Information Access Server enter the following:

```
:STREAM JINSTHDP.PPCUTIL.HPOFFICE
```

Please refer to the *Information Access Server: System Management Manual* (P/N B1716-90018) for detailed instructions on installing and configuring Information Access Server.

NOTE

Information Access Server is not fully configured until the job CONFJOB.NET.SYS has successfully completed. Do not stream this job now. Stream CONFJOB when requested to do so in section 8.

AUTOINST now creates the DUS and coldload tapes. This process is automatic. You need only to mount the tapes.

The DUS tape contains diagnostic utility programs used in the event of hardware malfunctions. (Your HP Customer Engineer would assist you in such a case.)

The coldload tape incorporates USL segments from the SUBSYS tape products into the system library.

7.1 RESTART AUTOINST

NOTE

If you responded Y in Section 5.5 to "DO YOU WANT TO INSTALL THESE PRO NOW AND CONTINUE WITH AUTOINST AFTER INSTALLING THESE PRODUCTS" then begin with step 1 below. If you responded N then begin with step 3 below.

1. When all products listed in INSTWARN #1 have been manually installed, re-enter the passwords and re-enable the UDCs recorded on the worksheet.
2. Disable your UDC directory as follows:

```
:RENAME COMMAND.PUB.SYS,COMMOLD.PUB.SYS  
:BUILD COMMAND.PUB.SYS  
:HELLO MANAGER.SYS;HIPRI
```

3. Run AUTOINST again to resume execution.

```
:RUN AUTOINST
```

7.2 CREATE THE DUS TAPE

The CE Diagnostics (DUS) tape is created before the coldload tape process begins.

1. For a dual-density drive, the following message will be displayed:

```
THE CE DIAGNOSTICS AND COLD LOAD TAPES WILL  
NOW BE CREATED. SHOULD THE TAPE DRIVE DEFAULT  
DENSITY <nnnn> BE USED TO CREATE THESE TAPES (Y/N)?
```

If N, supply the appropriate density at the prompt.

2. Mount the tape as requested, using a 1200' tape, and place the drive online.

```
TO CREATE A CE DIAGNOSTICS TAPE, ENSURE THAT  
WRITE IS ENABLED ON A BLANK TAPE. MOUNT THE  
TAPE AND PUT THE TAPE DRIVE ON LINE.
```

3. When the DUS tape is created, follow the instructions given for tape labeling in the message displayed:

```
THE CE DIAGNOSTICS TAPE HAS BEEN SUCCESSFULLY CREATED.  
LABEL THIS TAPE "DUS TAPE <V.UU.FF>". REFER TO  
THE FOS TAPE LABEL FOR THE <V.UU.FF>.  
ENSURE THAT WRITE IS NOW DISABLED.
```

7.3 CREATE THE COLDLOAD TAPE

The coldload tape process takes approximately two hours and forty-five minutes. However, it can take as little time as 15 minutes, depending on the number of products on the SUBSYS. The tape drive is inactive during the process of compiling the data to be written to tape. When the compilation is complete, the tape drive becomes active. As the data is written to tape, progress messages are displayed, indicating the percentage of the store operation completed.

To create the coldload tape, follow the steps below:

1. Mount a blank write-enabled tape when prompted as follows:

```
TO CREATE A COLD LOAD TAPE, ENSURE THAT WRITE IS
ENABLED ON A BLANK TAPE. MOUNT THE TAPE AND PUT
THE TAPE DRIVE ONLINE.
```

The coldload tape creation process can take up to three hours before the tape drive becomes active. This inactive period is dependent on the subsystems purchased.

2. When the coldload tape has been created, the following message will be displayed. Label the tape as specified.

```
THE SYSTEM COLD LOAD TAPE HAS BEEN SUCCESSFULLY CREATED.
LABEL THIS TAPE "COLD LOAD <V.UU.FF>". REFER TO
THE FOS TAPE LABEL FOR THE <V.UU.FF>. ENSURE THAT
WRITE IS NOW DISABLED.
```

3. The spoolfiles from the installation will be lost when you perform the coldstart. Allow them to complete printing, or store them off to tape with the SPOOK5 utility and purge them.

NOTE

If spoolfiles are not purged from the system, the space they occupy will not be reallocated to free space.

7.4 COLDSTART THE SYSTEM

Update the system from the coldload tape by performing the following steps.

For Series 37, MICRO 3000, or MICRO 3000/XE follow the steps below. For all other systems follow the steps in "On all other systems" on the next page.

1. Halt the system and load the new coldload tape, as specified below.

```
THE SYSTEM MUST NOW BE SHUTDOWN TO COMPLETE THE
INSTALLATION: ENTER A CONTROL-A SHUTDOWN (=SHUTDOWN)
NEXT, MOUNT THE COLD LOAD TAPE AND PUT THE TAPE DRIVE
ONLINE AND ENTER CONTROL-B COLD (>COLD).
```

Enter:

```
CONTROL A
=SHUTDOWN
```

The system will halt with the following message:

```
SESSION ABORTED BY SYSTEM MANAGEMENT
SHUT
HALT 15

H for help->
```

If the system does not halt within 60 seconds, manually halt the machine, as follows:

```
CONTROL B
```

Remount the coldload tape (write-protected) and place the tape drive online. Enter:

```
-> COLD
```

On all other systems:

```
THE SYSTEM MUST NOW BE SHUTDOWN TO COMPLETE THE
INSTALLATION: ENTER A CONTROL-A SHUTDOWN (=SHUTDOWN).
NEXT, MOUNT THE COLD LOAD TAPE AND PUT THE TAPE DRIVE
ONLINE AND ENTER LOAD (COLDSTART).
```

Enter:

```
(CONTROL) A
=SHUTDOWN
```



The system will halt with the following message:

```
SESSION ABORTED BY SYSTEM MANAGEMENT
SHUT
HALT 15
```

If the system does not halt within 60 seconds, manually halt the machine, as follows:

```
(CONTROL) B
->HALT
```

Remount the coldload tape (write-protected) and place the tape drive online. Enter:

```
->LOAD
```

Respond to the prompts as shown:

```
WHICH OPTION (COLDSTART/RELOAD/UPDATE)? COLDSTART
ANY CHANGES? N
```

2. Do not interrupt processing until you are prompted for the date and time. The coldstart will take approximately 15 minutes.

```
***WARNING*** AFTER THIS POINT DO NOT INTERRUPT THE STARTUP  
PROCESS UNTIL AFTER THE MESSAGE "WELCOME" APPEARS
```

```
DIRECTORY MAINTENANCE COMPLETED  
LOADING OF SYSTEM FILES IN PROGRESS  
LOADING OF SYSTEM FILES COMPLETED  
PART 1 OF 6 COMPLETED - MEMORY RESIDENT TABLES SET UP  
PART 2 OF 6 COMPLETED - SL BINDING  
PART 3 OF 6 COMPLETED - SYSTEM I/O PROCESS CREATION  
PART 4 OF 6 COMPLETED - DRIVER LOADING  
PART 5 OF 6 COMPLETED - DISC RESIDENT TABLES SET UP  
PART 6 OF 6 COMPLETED - SYSTEM PROCESS CREATION  
  
BANK 0 DEPENDENT MEMORY USED - xxxx
```

On a Series 37, MICRO 3000, or MICRO 3000/XE:

Respond to the date prompt as requested. (If you do not respond Y or N within 60 seconds, the system, by default, assumes the date and time displayed to be correct.)

```
day,date,time? (Y/N)
```

If N, respond to the prompt as indicated (use 24 hour time).

On all other systems:

Respond to the date prompt as requested.

```
DATE (M,D,Y)? mm/dd/yy  
TIME (H:M)? hh:mm ** 24 hour format **
```

Confirm the date and time as prompted.

3. If you are installing LAN Link, the following message may appear:

```
UNABLE TO OPEN SOCKET LOGGING; NM ERROR=nn  
SOCKETS 702
```

This message is normal following the installation of LAN Link software, if the product configuration is not complete. (The NM configuration will be performed later.)

4. The system will be up and running. Log on:

```
:HELLO MANAGER.SYS
```



All files have been restored and the system is operational. Certain products require additional procedures to make the software functional. The system can then be brought up for normal production.

8.1 CREATE 64/68/70 DIAGNOSTICS

If you are running a Series 64, 68, or 70 machine, refer to appendix C, "Series 64/68/70 Diagnostics" at this time to create the Fault Locating Diagnostics (FLD).

8.2 CONVERT IMAGE DATABASES

If updating from a version prior to G.02.0n, all existing databases, including HPMail and DICTIONARY, must be converted to TurboIMAGE format before they are operational. Refer to appendix D, "Image Database Conversion" and the *TurboIMAGE Database Management System Reference Manual* (P/N 32215-90050) (appendix H) for conversion instructions.

8.3 INSTALL NS/3000 & OFFICESHARE LAN/3000

To install NS/3000 and OFFICESHARE LAN/3000, follow these steps:

1. Log on:

```
:HELLO MANAGER.SYS
```

2. Enable the streams device and build the configuration file, as follows:

```
:STREAMS 10  
:STREAM CONFJOB.NET.SYS
```

After two or three minutes a completion notice is displayed:

```
CONFIGURATION CREATION SUCCESSFUL
```

8.4 CONFIGURE SPECIAL PRODUCTS

If you have special products (flagged by INSTWARN #10) listed on the worksheet, consult the applicable manual in the table below.

If you are installing any of these products for the first time, you **MUST** make the necessary configuration changes before the product is fully operational.

If you are updating any of these products, you **MAY** need to make configuration changes before the product is fully operational.

Products Requiring Configuration Changes

PRODUCT	PRODUCT #	MANUAL & CUSTOMER ORDER NUMBER
SNA NRJE	HP30245	SNA Link Services Reference Manual (30246-90003)
SNA LINK	HP30246	SNA Link Services Reference Manual (30246-90003)
SNA IMF	HP30247	SNA Link Services Reference Manual (30246-90003)
MRJE/3000	HP30249	MRJE/3000 User/Programmer's Reference Manual (30249-90001)
IMF/3000	HP30250	DSN/IMF Interactive Mainframe Facility Reference Manual (32229-90001)
LU 6.2 BASE	HP30252	SNA Link Services Reference Manual (30246-90003)
LU 6.2 API	HP30253	SNA Link Services Reference Manual (30246-90003)
HP ADVANCENET DMI	HP30264	Digital Multiplexed Interface (DMI) Reference Manual (30288-90001)
MTS/3000	HP32025	DSN/MTS Multipoint Terminal Software Reference Manual (32193-90002)
DS NETWORK SERVICES	HP32185	DS/3000 HP 3000 to HP 3000 User/Programmer Reference Manual (32185-90001)
DS/X.25 NETWORK LINK	HP32187	X.25/Link for the HP 3000 Reference Manual (32187-90001)

Products Requiring Configuration Changes (Continued)

PRODUCT	PRODUCT #	MANUAL & NUMBER
NS/3000 Services	HP32344	Vol 1: NS/3000 Network Manager Reference Manual (32344-90002)
INFORMATION ACCESS	B1726B	Information Access Server: System Management (B1716-90018)
RESOURCE SHARING	HPB1727A	Resource Sharing for MPE/V (32597-90079)
NS Point-to-Point Link ASYNC Serial Network Link OfficeShare LAN LINK NS X.25 LINK	HP30284 HP30285 HP32003 HP30240 HP24405	Vol 1: NS3000/V Network Manager Reference Manual (32344-90002) Vol 2: NS3000/V Network Manager Reference Manual (32344-90012)
NetDelivery/V	HP32346	NetDelivery/V Configuration Planning Guide (32346-90005)
NLS/3000	HP32414	Native Language Support Reference Manual (32414-90001)
PREDICTIVE SUPPORT	HP 51467	HP Predictive User's Guide (51467-90001)

8.5 SYSTEM STARTUP

Perform the following steps (on the system console):

1. Log on:

:HELLO MANAGER.SYS

2. Purge the group CREATOR.SYS. It contains Hewlett-Packard maintenance files which are no longer needed.

:PURGEGROUP CREATOR

3. If you have Security Monitor, re-enable your security configuration as follows:

:RUN SECCONF

The program will display the **MAIN MENU**. Select option 0 (zero), "EXIT". You will see:

Bring the System Up

Your security configuration changes will now take effect.

Thank you for using the Security Configurator.
END OF PROGRAM

4. If you have Security Monitor, add the USERPASS=REQ option to any USERS which have had the option removed (refer to the worksheet). Do so by entering the following:

```
:ALTUSER username;USERPASS=REQ
```

5. Replace passwords, if any, that were changed by AUTOINST. Refer to AUTOHIST.PUB.SYS to determine which passwords were changed.
6. Reinstall the original filename of SYSSTART (check the name you recorded on the worksheet), as follows:

```
:PURGE SYSSTART  
:RENAME filename,SYSSTART
```

NOTE

The commands in your SYSSTART file will only be executed when you START (Warm or Cool) or LOAD (Update, Coldload or Reload) your system.

- 7 Restart logging processes, if you terminated them in section 3.
8. Re-enable your UDC directory as follows:

```
:PURGE COMMAND.PUB.SYS  
:RENAME COMMOLD.PUB.SYS,COMMAND.PUB.SYS  
:HELLO MANAGER.SYS;HIPRI
```

9. Hewlett-Packard recommends that you set passwords for the following accounts and users. These accounts and users are currently created or modified during the update process, regardless of the type of products on the SUBSYS tape. You may find that some of these accounts do not contain files after you complete the update.

- CONV
- HPOFFICE
- HPPL85
- HPPL87
- HPPL96
- HPPL89

- ITF3000
- RJE
- SUPPORT
- TELESUP

The following users are created or modified to have OP and/or PM capabilities. We recommend that you set passwords for these users.

- MGR.HPOFFICE
- FIELD.HPPL85
- MGR.TELESUP

Record the passwords and keep them in a secure place.

10. If any modifications were made to the old CATALOG.PUB.SYS file, re-enter the modifications in the new file.
11. If any user SL segments resided in SL.PUB.SYS before the installation, replace them. A new coldload tape should be made.
12. If you have any Data Communication products, the configuration file may need to be updated. To update the configuration file, RUN NMMGRVER as follows.

Sample Conversion Syntax:

The screen below indicates that no conversion is necessary.

```

:RUN NMMGRVER
.
.
.
Fileset to be scanned? @.NET
OK to convert NSCONF.NE.SYS? Y
No need to convert (NMMGRVERMSG 1)

END OF PROGRAM
:

```

If conversion is necessary, you will see the following message.

```

:RUN NMMGRVER
.
.
.
Fileset to be scanned? @.NET
OK to convert NSCONF.NE.SYS? Y
CONVERSION completed successfully. (NMMGRVERMSG 0)

END OF PROGRAM
:

```

Bring the System Up

13. Open the applicable communication lines as follows:

```
:LIMIT n,nn    ** n=jobs, nn=sessions **  
:STREAMS 10  
:DSCONTROL ldev;OPEN  
:MRJECONTROL SIGNON  
:MPLINE ldev,OPEN  
:SNACONTROL START;NODE=nodename  
:IMFCONTROL START imfconfigfile  
:NRJECONTROL START;WSID=wsidname  
:NETCONTROL START  
:NSCONTROL START  
:OUTFENCE n  
:JOBFENCE n
```

NOTE

Further assistance with this utility program can be found in the *NS/3000/V Network Reference Manual, Vol. 1* (P/N 32344-90002), appendix C, "Converting Configuration Files". A generic error message is shown below.

Sample Error Message

```
:NETCONTROL START  
.  
.  
.  
*NETXPORT Control Process:IRRECOVERABLE ERROR: Bad CONFIG file version*
```

14. Enable disc caching, if applicable:

```
:STARTCACHE ldev#
```

15. Record the installation in the system logbook.

NOTE

If you have any patches that need to be applied, please refer to your Patch installation instructions and install them at this time.

RUNNING SYSDUMP

Run SYSDUMP to change the configuration and create a coldload tape. The lines of the dialog with an asterisk beside them (*) are displayed only if you have data communication products configured on your system.

1. Mount a blank tape, write-enabled.
2. Enter the following commands and proceed through the dialog. Change the values as required.

```
:FILE T;DEV=devclass ** Refer to worksheet **
:FILE SYSDLIST;DEV=LP
:SYSDUMP *T
```

If for some reason you want to abort the SYSDUMP program type:

```
:RETURN
```

```
ANY CHANGES? Y
SYSTEM ID = HP32033G.00.00.?
MEMORY SIZE = 3072.?
I/O CONFIGURATION CHANGES? Y
LIST I/O DEVICES? Y
```

LOG DEV #	DRT #	U N	C I	T A	SUB P	TYPE	TERMINAL TYPE	RECS WIDTH	OUTPUT DEV	MODE	DRIVER NAME	DEVICE CLASSES	
1	nm	0	0	0	0	9		128	0		HIOMDSC1	DISC SYSDISC SPOOL	
6	33	0	0	32	4			66	0	S	HIOLPRT0	LP LP2608	
7	17	0	0	24	0			128	0		HIOTAPE0	TAPE DDUMP	
10	17	3	0	24	0			128	LP	JA	HIOTAPE0	JOBTAPE	
	20	8	0	0	16	0	10	960	40	20	JAID	HIOTERM1	TERM CONSOLE
21	8	1	0	16	0		10	960	40	21	JAID	HIOTERM1	TERM
22	8	2	0	16	0		10	960	40	22	JAID	HIOTERM1	TERM
23	8	3	0	16	0		10	960	40	23	JAID	HIOTERM1	TERM

```
* LIST CS DEVICES?
LIST DEVICE DEFAULTS?
HIGHEST DRT = 327.?
LOGICAL DEVICE #?
MAX # OF OPEN SPOOLFILES = 50.?
LIST I/O DEVICES?
* LIST CS DEVICES?
TERMINAL TYPE CHANGES?
CLASS CHANGES?
LIST I/O DEVICES?
* ADDITIONAL DRIVER CHANGES?
I/O CONFIGURATION CHANGES?
SYSTEM TABLE CHANGES? Y
CST = 192.?
EXTENDED CST = nnnn.?
DST = 768.?
PCB = nnn.?
I/O QUEUE = 128.?
DISC REQUEST TABLE = nnn.?
TERMINAL BUFFERS PER PORT = 3.?
SYSTEM BUFFERS = 64.?
SWAP TABLE = nnnn.?
PRIMARY MESSAGE TABLE = nnn.?
SECONDARY MESSAGE TABLE = nn.?
SPECIAL REQUEST TABLE = 20.?
ICS = 1500.?
LOADER SEGMENT TABLE = 16384.?
UCOP REQUEST QUEUE = 50.?
TIMER REQUEST LIST = 255.?
BREAKPOINT TABLE = 30.?
MAX NUMBER OF USER LOGGING PROCESSES = 2.?
MAX NUMBER OF USERS PER LOGGING PROCESS = 3.?
MISC CONFIGURATION CHANGES?
LOGGING CHANGES?
DISC ALLOCATION CHANGES?
SCHEDULING CHANGES?
SEGMENT LIMIT CHANGES? Y
MAX # OF CONCURRENT RUNNING PROGRAMS = nn.?
MAX CODE SEGMENT SIZE = nnnnn.?
MAX # OF SEGMENTS/PROCESS = nn.?
MAX STACK SIZE = nnnnn.?
MAX EXTRA DATA SEG SIZE = nnnnn.?          ** Must = 32764 **
MAX # OF EXTRA DATA SEGMENTS/PROCESS = nnn.?
STD STACK SIZE = 1200.?
SYSTEM PROGRAM CHANGES?
SYSTEM SL CHANGES?
ENTER DUMP DATE?
```

3. A request for the device class of the drive being used (see worksheet entry) will be displayed:

```
?time/job/pin/ldev# FOR "T" on devclass (NUM)?
```

or

```
?time/job/pin/ldev# FOR "T" on devclass (NUM),WRITE RING? (Y/N)
```

Respond with:

```
(CONTROL) A  
=REPLY pin,ldev ** Add ,Y if responding to the second message **
```

4. The following message will appear when the tape has been created.

```
END OF SUBSYSTEM  
:
```

5. Enter the following command to shutdown the system:

```
(CONTROL) A  
=SHUTDOWN
```

The system will halt with the following message:

```
SESSION ABORTED BY SYSTEM MANAGEMENT  
SHUT  
HALT 15
```

6. If the system does not halt within 60 seconds, manually halt the machine, as follows:

On a Series 37, MICRO 3000, or MICRO 3000/XE:

Turn the keyswitch to position 2 and enter (CONTROL) B. Return the keyswitch to position 1.

On all other systems:

```
(CONTROL) B  
->HALT
```

7. Write-protect the tape and remount it. Enter:

```
->LOAD
```

Follow the dialog below:

```
WHICH OPTION (COLDSTART/RELOAD/UPDATE)? COLDSTART  
ANY CHANGES? N
```

Running SYSDUMP

Do not interrupt processing until you are prompted for the date and time. The procedure will take approximately 15 minutes to complete. If you are on G.0n.0n, the following will be displayed.

```
***WARNING** AFTER THIS POINT DO NOT INTERRUPT THE STARTUP
PROCESS UNTIL AFTER THE MESSAGE "WELCOME" APPEARS

DIRECTORY MAINTENANCE COMPLETED
LOADING OF SYSTEM FILES IN PROGRESS
LOADING OF SYSTEM FILES COMPLETED
PART 1 OF 6 COMPLETED - MEMORY RESIDENT TABLES SET UP
PART 2 OF 6 COMPLETED - SL BINDING
PART 3 OF 6 COMPLETED - SYSTEM I/O PROCESS CREATION
PART 4 OF 6 COMPLETED - DRIVER LOADING
PART 5 OF 6 COMPLETED - DISC RESIDENT TABLES SET UP
PART 6 OF 6 COMPLETED - SYSTEM PROCESS CREATION

BANK 0 DEPENDENT MEMORY USED - xxxxxx
```

On a Series 37 MICRO 3000, or MICRO 3000/XE:

Respond to the date prompt as requested.

```
day,date,time? (Y/N)
```

If N, respond to the prompts as indicated (use 24 hour format).

On all other systems:

Respond to the date prompt as requested.

```
DATE (M/D/Y)? mm/dd/yy
TIME (H:M)? hh/mm ** 24 hour format **
```

Confirm the date and time as prompted.

8. The system will be up and running. Logon:

```
:HELLO MANAGER.SYS
```

RUNNING PCONVERT

APPENDIX

B

PCONVERT is a conversion program which purges all MPE IV- and MPE V/P-based utilities. This procedure is necessary if you are updating from an MPE version where the v in the v.uu.ff is C, D, E, or F.

CAUTION

Do not follow this procedure if you are updating from MPE version G.0n.0n or later. If you attempt to do so, you will be forced into a reload.

If an MPE IV- or MPE V/P-based utility does not reside in PUB.SYS, it will not be purged. An attempt to run one of these utilities on an MPE V/E-based system will result in system hangs or failures.

The program PCONVERT.PUB.SYS requires 4,000 sectors of virtual memory on LDEV1. A SYSDUMP \$NULL will show the virtual memory allocation in the DISC ALLOCATION CHANGES section. If there are less than 4,000 sectors allocated, contact your Response Center.

1. Three areas of contiguous space (14,000, 2,000, and 1,000 sectors) are necessary to run PCONVERT. If there is not enough contiguous free space, copy files to tape and purge them from the disk. (Other alternatives are presented in Appendix E, "Error Messages and Warnings".) Enter the following commands to make space available.

```
: BUILD TAKESPC1; DEV=1; DISC=14000, 1, 1  
: BUILD TAKESPC2; DEV=1; DISC=2000, 1, 1  
: BUILD TAKESPC3; DEV=1; DISC=1000, 1, 1
```

2. Purge the dummy files.

```
: PURGE TAKESPC1  
: PURGE TAKESPC2  
: PURGE TAKESPC3
```

3. Shut down the system.

```
CONTROL A  
=SHUTDOWN
```

If the system does not halt within 60 seconds, manually halt the machine as follows:

```
CONTROL B  
->HALT
```

4. COOLSTART the system.

```
->START
```


Running PCONVERT

- MPE will display the system ID and begin an interactive dialog.

```
WHICH OPTION (WARMSTART/COOLSTART)? COOLSTART  
ANY CHANGES? N
```

After approximately 5 minutes, the following will be displayed:

```
DATE (M/D/Y)? mm/dd/yy  
TIME (H:M)? hh:mm ** 24 hour format **
```

The system will be up and running.

- Log on:

```
:HELLO MANAGER.SYS  
:LIMIT 1,1
```

- Mount the FOS tape on the coldload device and enter the following. Refer to the worksheet for the device class of the coldload device.

```
:FILE T;DEV=devclass  
:RESTORE *T;PCONVERT;SHOW
```

- Reply to the tape request. Refer to the worksheet for the LDEV# of the coldload device.

```
?time/job/pin/LDEV# FOR "T" ON devclass (NUM)?
```

```
CONTROL A  
=REPLY pin,ldev
```

- When the file has been restored, enter the following.

```
:RUN PCONVERT
```

Confirm that PCONVERT is to be run by responding Y at the prompt. The system will halt after five seconds.

```
OK TO PROCEED (Y/N)? Y
```

This appendix provides instructions for creating the Fault Locating Diagnostics (FLD) on the Series 6X and 70 machines.

The procedures for creating the FLD differ, depending on which terminal you are using as the system console: The HP 2647F, or the HP 150. The disk formatting instructions have been separated from FLDCOPY program dialog for each type of terminal. Follow the instructions for your system console.

C.1 CREATING DIAGNOSTICS ON THE HP 2647F

Before you run the FLDCOPY program, you must format the disk, as follows:

C.1.1 Format the Disk

1. Ensure the disk is write-enabled and insert it in the drive.
2. When the red light stops flashing on the drive, press the command key on the console keyboard.
3. Press **f8**, **f1**, and **f3** in sequence. The following message will be displayed:

```
FORMAT VOLUME ON DISC#
```

4. Enter:

```
1
```

5. Two messages will be displayed (the second in inverse video):

```
** Disc FORMAT in progress **  
** Disc VERIFY in progress **
```

6. When the * prompt is displayed, press the COMMAND key to terminate the process.

C.1.2 Run FLDCOPY

1. Log on and enter:

```
:HELLO FIELD.SUPPORT,HP32342  
:RUN FLDCOPY
```

FLDCOPY

This utility program is intended to make copies of Fault Locating Diagnostics (binary) to HP9164-0128 flexible disc media by using the HP2642A 3000/64 System Console.

Successful operation of this utility requires that the MPE Console (ldev#20) be temporarily moved to another appropriately configured terminal. Perform the following operations:

1. Press: "BREAK" key
2. Type: "CONSOLE <ldev#>" to move System Console
3. Type: "RESUME"
4. Type: "GO" to continue

The console will be switched back to ldev#20 programmatically upon successful completion of the program.

TYPE "GO" TO CONTINUE GO

Pressing control Y will transfer control to a trap procedure, which switches the Console back to device 20, sets terminal echo on, and terminates the program. It should be used to abort the program whenever possible. However, during binary data transfer, control Y is regarded as data by the system. If it is necessary to abort the program during binary read or write, and control Y seems to be ignored, do the following instead:

1. press "BREAK" key
2. press "ESC" & ":" keys (turn on terminal echo)
3. type "ABORT", CR
4. type "RUN CBON", CR (enable control B)
5. type "CONSOLE 20", CR (switch System Console back)

Do you have a permanent file (saved from previous execution of this program) you want to copy the discs from? YES

What is the name of the permanent file? S64FLDS

Do you want instructions to prepare the TO disc for copying? YES

To prepare the TO disc for copying, do the following:

1. Make sure the disc media is not write protected and then insert the disc into the unit and close the door.
2. Push the COMMAND key.

NOTE: Steps 3-7 require usage of the System Console soft keys. They are preprogrammed and should be pushed in the sequence stated.

3. SHOW VOLUME (Press F3,F2,<CR>)

VOLUME NAME		HP-IB ADDRESS		
Local	Disc	Start of	Space	Write
Volume	Type#Unit	Free Space	Left	Protect
<i>name</i>	<i>type#</i>	<i>###</i>	<i>###</i>	NO

4. If volume name is "nonsif" or "nonfmat" then go to Step 6.
5. PURGE VOLUME <volume name> (press F8,F4,F5, type volume name to be purged, <CR>)
6. CREATE VOLUME <volume name> ON DISC#1 (press F8,F5,F6, type in a volume name, press F2, type "1", <CR>)
7. VERIFY ENABLE (press F1 twice, F4 twice, <CR>)
8. Press COMMAND key, <CR>.

Press RETURN when disc is ready and inserted

Do not enter anything on the keyboard until you see "Do you want to make another copy?" (The values given in the example below may differ from those on your display.)

```
BEGIN WRITE (approximately 15 minutes)

3 RECORDS RECORDED, FILE 1
7 RECORDS RECORDED, FILE 2
16 RECORDS RECORDED, FILE 3
15 RECORDS RECORDED, FILE 4
14 RECORDS RECORDED, FILE 5
6 RECORDS RECORDED, FILE 6
3 RECORDS RECORDED, FILE 7
90 RECORDS RECORDED, FILE 8
121 RECORDS RECORDED, FILE 9
97 RECORDS RECORDED, FILE 10
65 RECORDS RECORDED, FILE 11
146 RECORDS RECORDED, FILE 12
10 RECORDS RECORDED, FILE 13
170 RECORDS RECORDED, FILE 14
14 FILES COPIED.
WRITE COMPLETED
Do you want to make another copy?
```

2. To make another copy, reply YES. You will be prompted: "Do you want the instructions to prepare the TO disc for copying?"

If N, the following message will be displayed, and the program will terminate.

```
CONSOLE HAS BEEN SWITCHED FROM LDEV 21 TO LDEV 20 .
END OF PROGRAM
:
```

3. Remove the disk from the drive and label it with "FLD", the date, and the v.uu.ff number.

C.2 CREATING DIAGNOSTICS ON THE HP 150

Before you run the FLDCOPY program, you must format the disk as follows:

C.2.1 Format the Disk

1. Select the FORMAT option on the Personal Applications Manager (PAM) menu. Press **RETURN**.
2. A menu will prompt you to select Drive A or B. Type B, and press **RETURN**.

3. You will be prompted to supply DISC LABEL. If you wish, you can type a name (perhaps for archiving purposes). This is optional, and won't interfere with creating the diagnostics. If you do not need a label, simply press **RETURN**.
4. Notice the function keys now show a new set of options. Select the START FORMAT option. A message is displayed when the disk format is complete.
5. The disk is now ready to store the diagnostics. Leave the disk in Drive B, and run FLDCOPY as described below.

C.2.2 Run FLDCOPY

You may want to read through the dialog of the FLDCOPY program shown below. The dialog gives specific instructions. The appropriate responses are shown, underlined in a boldfaced type.

1. To run the program, log on, and enter the following:

```
:HELLO FIELD.SUPPORT,HP32342  
:RUN FLDCOPY
```

2. Go through the dialog as shown:

```
run fldcopy  
  
FLDCOPY - ver 13.0 -- ver 13.0  
  
Terminal= 150B, Ldev= 21, MPE Console Ldev= 20  
  
This utility program is intended to make copies of Fault Locating  
Diagnostics (binary) to HP92190A flexible disc media by using the  
HP2647F or to HP92192A micro flexible disc media by using an HP150  
running the HP3000 S68 DCU to HP150 Communication Program.  
  
TYPE 'GO' TO CONTINUE:  
go  
  
Pressing <CTRL> and <Y> will transfer control to a trap procedure,  
which sets terminal echo ON and terminates the program.  
  
The CTRL-Y trap should be used to abort the program whenever pos-  
sible. However, during binary data transfer, CTRL-Y is regarded  
as data by the system. If it is necessary to abort the program  
during binary read or write, and CTRL-Y seems to be ignored, do  
the following instead:  
1. press <BREAK> {break to MPE}  
2. type <ESC> ':' {turn on terminal echo}  
3. type 'ABORT' <Return> {abort FLDCOPY}  
  
Do you have a permanent file (saved from previous execution of this  
program) you want to copy the discs from? yes
```

What is the name of the permanent file? s64flds

Do you want the instructions to prepare the T0 disc for copying? yes

To prepare the T0 disc for copying on the HP150:

1. Make sure the HP150 is running the HP3000 S68 DCU to HP150 Communication Program.
2. Make sure the micro floppy disc is not write-protected and insert the disc into drive B.
3. Press <Shift> and <User/System> at the same time to display the communication program application softkeys.
4. Press <disc (f6) > to access the 'disc' menu keys.
5. Press <FORMAT FLOPPY (f1) > to format the disc in drive B.
6. Wait for the format warning message and type 'Y' to continue the floppy format process.
7. Wait for the 'FORMAT DONE!' message.

Press <Return> when disc is ready and inserted.

Do not enter anything on the keyboard until you see "Do you want to make another copy?" (The values given in the example below may differ from those on your display.)

BEGIN WRITE (approximately 15 minutes)

3 RECORDS RECORDED, FILE 1
7 RECORDS RECORDED, FILE 2
16 RECORDS RECORDED, FILE 3
15 RECORDS RECORDED, FILE 4
14 RECORDS RECORDED, FILE 5
6 RECORDS RECORDED, FILE 6
3 RECORDS RECORDED, FILE 7
90 RECORDS RECORDED, FILE 8
121 RECORDS RECORDED, FILE 9
97 RECORDS RECORDED, FILE 10
65 RECORDS RECORDED, FILE 11
146 RECORDS RECORDED, FILE 12
10 RECORDS RECORDED, FILE 13
170 RECORDS RECORDED, FILE 14
14 FILES COPIED.
WRITE COMPLETED
Do you want to make another copy?

3. To make another copy, reply YES. You will be prompted: "Do you want the instructions to prepare the TO disc for copying?"

If N, the following message will be displayed, and the program will terminate.

```
CONSOLE HAS BEEN SWITCHED FROM LDEV 21 TO LDEV 20 .  
END OF PROGRAM
```

4. Remove the disk from the drive and label it with "FLD", the date, and the v.uu.ff number.



If you're operating from a T-based MIT, you'll need to convert your databases from IMAGE to TurboIMAGE using the DBCONV utility. This utility restructures the root file and master data sets, but leaves automatic data sets, detail data sets and stand-alone masters unchanged.

D.1 FROM IMAGE TO TURBOIMAGE

There are two ways of converting from IMAGE/3000 to TurboIMAGE/3000: manually or streaming. To perform this conversion, follow the steps in either Section D. 1. 1 or D. 1. 2.

NOTE

Before you begin, make a DBSTORE of each database.

D.1.1 Manual Method



1. Logon to the database account:

```
:HELLO MANAGER.accountname,groupname
```

2. To determine

- the total extra disk space required by the converted database
- the temporary disk space required by DBCONV
- inconsistencies in the data set definitions,

enter:

```
:RUN DBCONV.PUB.SYS,VERIFY
```

```
Database Name? database
```

```
Starting conversion disc space analysis and verification  
for database DATABASENAME
```

```
Total extra disc space required for converted database: XX sectors
```

```
The temporary disc space required: XX sectors
```

```
Inconsistency is not detected in the root file.
```

```
Conversion disc space analysis and verification is done!!!
```

```
END OF PROGRAM
```

3. Disable ILR:

```
:RUN DBUTILB.PUB.SYS  
>>DISABLE databasename FOR ILR  
>>EXIT
```

4. Convert the database:

```
:RUN DBCONV.PUB.SYS
```

```
HP32215C.00 TurboIMAGE/3000: DBCONV (C) COPYRIGHT HEWLETT-PACKARD CO. 1984  
DATABASE NAME?databasename  
DATABASE has not been modified since last DBSTORE.  
Continue (YES/NO)? YES  
DATABASE01 has been converted.  
DATABASE02 has been converted.  
DATABASE03 has been converted.  
.  
.  
.  
Conversion is done !!!!
```

5. Repeat steps 1 through 4 for each of your databases.

D.1.2 Streaming Method

Rather than converting each database individually, you can use the editor file MASTUSE to convert these databases in a job stream.

1. Logon:

```
:HELLO MANAGER.SYS,CONVALL
```

2. Enable the UDC:

```
:SETCATALOG CONVUDC
```

3. Start MASTUSE:

```
:EDITOR  
/USE MASTUSE
```

4. Respond to the prompts issued by MASTUSE. When you are prompted for the MANAGER NAME, enter MANAGER, not MANAGER.SYS.

NOTE

Databases are not converted until you stream JSTREAMS. Please note that MASTUSE will create many job streams. When the last job stream completes, type:

:STREAM JSTREAMS.CONVALL.SYS

D.2 FROM TURBOIMAGE TO IMAGE

If you're changing from a U-based to a T-based MIT, you'll need to convert your databases from TurboIMAGE to IMAGE.

There are two methods for converting from TurboIMAGE/3000 to IMAGE/3000: manually or streaming. To proceed with this conversion, follow the steps in either D. 2. 1 or D. 2. 2.

D.2.1 Manual Method

1. Logon to the database account:

:HELLO MANAGER.accountname,groupname

2. Disable ILR:

:RUN DBUTILB.PUB.SYS
>>DISABLE databasename FOR ILR
>>EXIT

3. Convert the database:

:RUN DBCONV.PUB.SYS, BACKWARD

```
DATABASE NAME? databasename
DATABASE has not been modified since last DBSTORE.
Continue (YES/NO)? YES
DATABASE01 has been converted back.
```

4. Repeat steps 1 through 3 for each of your databases.

D.2.2 Streaming Method

If you do not want to convert each database individually, you can stream the conversion from TurboIMAGE to IMAGE by following these steps:

1. Log on:

:HELLO MANAGER.SYS, CONVALL

2. Enable the UDC:

:SETCATALOG CONVUDC

3. Modify the TMPCONV3 file as follows:

Change RUN DBUTILB.PUB.SYS to RUN DBUTIL.PUB.SYS
and
Change RUN DBCONV.PUB.SYS to RUN DBCONV.PUB.SYS, BACKWARD

4. Start MASTUSE:

:EDITOR
/USE MASTUSE

5. Respond to the prompts issued by MASTUSE. When you are prompted for the MANAGER NAME, enter MANAGER NOT MANAGER.SYS.

NOTE

The databases are not converted until you stream JSTREAMS. Please note that MASTUSE will create many job streams. When the last job stream completes, type:

:STREAM JSTREAMS.CONVALL.SYS



-
-



AUTOINST error messages, and their appropriate resolutions, are provided in this appendix. Also provided are three potential system error messages. Any other programmed messages can be found in the appropriate MPE Manual or applicable utility manual.

E.1 AUTOINST MESSAGES

AUTOINST error messages and warnings are listed in numerical order. Resolutions are provided for each message. If you encounter an AUTOINST error message that is not listed below, please contact your Response Center for assistance.

E.1.1 Error Messages

#1 ERROR MESSAGE

```
INSTALLATION CAN ONLY BE PERFORMED BY MANAGER.SYS,PUB.  
(INSTERR #1)
```

ACTION

Log on as follows, and run AUTOINST again.

```
:HELLO MANAGER.SYS,PUB
```

#2 ERROR MESSAGE

```
*WARNING -- THIS SYSTEM DOES NOT HAVE ENOUGH  
DISC SPACE ON LDEV 1. (INSTERR #2)
```

ACTION

Run FREE5.PUB.SYS to determine the amount of disk space that must be released. Use one of the options below to free your disk space:

- (recommended) Store off to tape, then purge files until you have enough free space.
- Use the :VINIT command with the >COND 1 option.
- Perform a COOLSTART, answering Y to the "RECOVER LOST DISC SPACE" step. It takes approximately 10 minutes for every 1,000 files to recover the disk space. After the COOLSTART, use the :VINIT command with the >COND 1 option.

When you have successfully reserved 17,000 contiguous sectors of disk space, run AUTOINST again.

#3 ERROR MESSAGE

```
UNRECOGNIZABLE PARAMETER ENTERED. (INSTERR #3)
```

ACTION

Please enter the appropriate info parameter.

#4 ERROR MESSAGE

```
CREATION OF THE ACCOUNTING STRUCTURE HAS  
FAILED. (INSTERR #4)
```

ACTION

This message may have appeared if:

- Other jobs or sessions are logged on to the system. If so, abort these jobs/sessions, and all deferred jobs, and run AUTOINST again using the appropriate info parameters.
- Some UDCs were not disabled at the system, account, or user levels. If so, disable them at this time. Abort all deferred jobs, and run AUTOINST again using appropriate info parameters.
- Use SPOOK5.PUB.SYS to inspect the spoolfiles generated by AUTOINST for the accounting structure jobs. If necessary, take the appropriate corrective actions and run AUTOINST again using appropriate info parameters. If you cannot resolve the problem, or if AUTOINST fails again, please contact your Response Center for assistance.

If none of the above conditions caused the creation of the accounting structure to fail, contact your Response Center.

#5 ERROR MESSAGE

```
THE FILES FROM THE FOS TAPE WERE NOT SUCCESSFULLY  
RESTORED. (INSTERR #5)
```

ACTION

Use an editor to inspect the file FOSLIST.PUB.SYS. The error messages in this file indicate problems encountered in restoring files from the FOS tape. Take appropriate corrective measures and run AUTOINST again using appropriate info parameters. If unsuccessful a second time, please contact your Response Center for assistance.

#6 ERROR MESSAGE

```
THE SUBSYS TAPE HAS NOT BEEN SUCCESSFULLY RESTORED.  
(INSTERR #6)
```

ACTION

Use an editor to inspect the file SUBSLIST.PUB.SYS. The error messages in this file indicate problems encountered in restoring files from the SUBSYS tape. Take appropriate corrective measures and run AUTOINST again using appropriate info parameters. If unsuccessful a second time, contact your Response Center.

#7 ERROR MESSAGE

```
COULD NOT PURGE THE FILE FILELIST.PUB.SYS (INSTERR #7)
```

ACTION

If a file FILELIST.PUB.SYS already exists, and you need to keep it, rename it using the :RENAME command. Otherwise, purge the file and run AUTOINST again using appropriate info parameters.

#8 ERROR MESSAGE

```
THE COLD LOAD TAPE WAS NOT SUCCESSFULLY CREATED. (INSTERR #8)
```

ACTION

Use the utility SPOOK5.PUB.SYS to inspect the spoolfiles generated by AUTOINST for the job DUMP.PUB.SYS. If necessary, take appropriate corrective measures and run AUTOINST again using appropriate info parameters. If you cannot resolve the problem or AUTOINST fails again, please contact your Response Center for assistance.

#9 ERROR MESSAGE

```
FOUND INVALID COLD LOAD LOGICAL DEVICE NUMBER. (INSTERR #9)
```

ACTION

The LDEV number found by AUTOINST was invalid (i.e. less than 0 or greater than 999). Check your system configuration, enter the correct value, and run AUTOINST again using appropriate info parameters. If this error occurs a second time, please contact your Response Center for assistance.

#11 ERROR MESSAGE

DLGINFO HAS BEEN PURGED FROM THE SYSTEM. (INSTERR #11)

ACTION

Restore DLGINFO.PUB.SYS from the FOS tape, and run AUTOINST again using appropriate info parameters. Be sure to use the appropriate FOS tape.

#12 ERROR MESSAGE

PROGRAM FILE INSTALL.PUB.SYS NOT FOUND. (INSTERR #12)

ACTION

Restore INSTALL.PUB.SYS from the FOS tape and run AUTOINST again using appropriate info parameters. Be sure to use the appropriate FOS tape.

#13 ERROR MESSAGE

THE PROGRAM INSTALL.PUB.SYS WAS NOT SUCCESSFUL. (INSTERR #13)

ACTION

This message will appear in conjunction with INSTERR #8. Please refer to the instructions given for INSTERR #8 for the appropriate action.

#18 ERROR MESSAGE

TEMPLATE HAS BEEN PURGED FROM THE SYSTEM. (INSTERR #18)

ACTION

Restore TEMPLATE.PUB.SYS from the FOS tape, and run AUTOINST again using appropriate info parameters. Be sure to use the appropriate FOS tape.

#19 ERROR MESSAGE

```
SUPACCT HAS BEEN PURGED FROM SYSTEM. (INSTERR #19)
```

ACTION

Restore SUPACCT.PUB.SYS from the FOS tape and run AUTOINST again using appropriate info parameters. Be sure to use the appropriate FOS tape.

#20 ERROR MESSAGE

```
CYCLIC JOB CALL ENCOUNTERED. JOB PROCESSING ifilename  
(INSTERR #20)
```

ACTION

Type LISTF I???????.USL.SYS.

- If the file INDIRECT exists, purge it, and run AUTOINST again using the appropriate parameters.
- If the LISTF lists the *ifilename* identified in the error message, inspect that file for valid job commands. If this inspection shows that the file is not a valid job, either purge the file, or remove it from the group/account USL.SYS.
- If the LISTF lists the *ifilename* identified in the error message, and inspection of the file shows that the file is a valid job, the file may be corrupted. Purge the file, and restore it again from the SUBSYS tape. Run AUTOINST again using the appropriate parameters.

If AUTOINST fails again with this error, please contact your Response Center for assistance.

#21 ERROR MESSAGE

```
INVALID JOB ENCOJNTERED. JOB PROCESSING: ifilename  
(INSTERR #21)
```

ACTION

Please follow the instructions given for INSTERR #20.

#22 ERROR MESSAGE

```
AN INSTALLATION JOB STREAM HAS FAILED.  JOB STREAMING: ifilename
(INSTERR #22)
```

ACTION

Use SPOOK5 to determine why the job failed. (Text the file in SPOOK5, and read the JCL.) If you need the job number, use an editor to text HPINSTFL. The job numbers are listed at the end of HPINSTFL.

#28 ERROR MESSAGE

```
INSTALLATION FILE CALLED BY JOB.  JOB PROCESSING: ifilename
(INSTERR #28)
```

ACTION

Please follow the instructions given for INSTERR #20.

#29 ERROR MESSAGE

```
UNABLE TO RECOVER INSTALLATION FILE PROCESSING.
(INSTERR #29)
```

ACTION

A required installation file has been purged from the system. Restore I?????????.USL.SYS from the SUBSYS tape, and run AUTOINST again using the appropriate parameters. Be sure to use the appropriate SUBSYS tape.

#30 ERROR MESSAGE

```
AUTOINST DOES NOT SUPPORT STREAMING EXTERNAL JOBS
FROM WITHIN INSTALLATION FILE.
JOB PROCESSING: ifilename
(INSTERR #30)
```

ACTION

Please follow the instructions given for INSTERR #20.

#35 ERROR MESSAGE

DLGPATCH HAS BEEN PURGED FROM THE SYSTEM
(INSTERR #35)

ACTION

Restore DLGPATCH.PUB.SYS from the PowerPatch tape and run AUTOINST;INFO="PATCH" again.

#36 ERROR MESSAGE

ADD-ON CANNOT BE COMPLETED WITHOUT AN ADD-ON
SUBSYS TAPE.
(INSTERR #36)

ACTION

Your ADD-ON installation package is incomplete if it does not include an ADD-ON SUBSYS tape. Contact your Response Center.

#37 ERROR MESSAGE

PATCH CANNOT BE COMPLETED WITHOUT A PATCH TAPE.
(INSTERR #37)

ACTION

Your PATCH installation package is incomplete if it does not include a PATCH tape. Contact your Response Center.

#38 ERROR MESSAGE

THE ADD-ON TAPE HAS NOT BEEN SUCCESSFULLY RESTORED.
(INSTERR #38)

ACTION

Please follow the instructions given for INSTERR #6.

#39 ERROR MESSAGE

THE PATCH TAPE HAS NOT BEEN SUCCESSFULLY RESTORED.
(INSTERR #39)

ACTION

Please follow the instructions given for INSTERR #6.

#40 ERROR MESSAGE

ERROR TRYING RUN STORE.PUB.SYS (INSTERR #40)
COULD NOT CREATE STORE/RESTORE PROCESS. CREATE PROCESS ERROR:n

ACTION

The call to the intrinsic CREATEPROCESS has failed. Consult your *MPE V/E Intrinsic Reference Manual* (P/N 32033-90007) to determine error. If error cannot be resolved, contact your Response Center.

#41 ERROR MESSAGE

UNABLE TO OBTAIN CONSOLE LDEV#
(INSTERR #41)

ACTION

Please contact your Response Center for assistance.

#42 ERROR MESSAGE

UNABLE TO OBTAIN USER LOGON LDEV#
(INSTERR #42)

ACTION

Please contact your Response Center for assistance.

#43 ERROR MESSAGE

INSTALLATION CAN ONLY BE PERFORMED FROM CONSOLE
(INSTERR #43)

ACTION

Log on to the console and run AUTOINST again.

E.1.2 Warning Messages

#1 WARNING MESSAGE

```
*WARNING -- THIS PROGRAM CANNOT INSTALL THE PRODUCTS
LISTED BELOW. IF YOU WANT TO CONTINUE WITH AUTOINST
THE COLD LOAD TAPE WILL NOT INCLUDE THESE PRODUCTS.
(INSTWARN #1)
```

ACTION

The SUBSYS tape has non-AUTOINSTallable products. Install all of these products before creating the coldload tape. If you do not, you will need to create another coldload tape.

#2 WARNING MESSAGE

```
THE CE DIAGNOSTICS TAPE WAS NOT SUCCESSFULLY CREATED.
HOWEVER, THIS WILL NOT AFFECT THE INSTALLATION.
(INSTWARN #2)
```

ACTION

When AUTOINST has completed, mount a blank (write-enabled) tape. Put the tape drive online, and enter the following:

```
:HELLO FIELD.SUPPORT,HP32231
:RUN COPYDUS
```

Label the tape with the date and date code.

#3 WARNING MESSAGE

```
LOGICAL DEVICE nn IS AN INVALID COLD LOAD MEDIA DEVICE.
(INSTWARN #3)
PLEASE ENTER ANOTHER LOGICAL DEVICE NUMBER FOR
CREATION OF THE COLD LOAD TAPE.
>>
```

ACTION

Please enter the valid logical device number of your tape drive.

#4 WARNING MESSAGE

```
CANNOT CREATE DUS TAPE BECAUSE OF INVALID LDEV TYPE.  
(INSTWARN #4)
```

ACTION

Please follow the actions described for INSTWARN #2.



#5 WARNING MESSAGE

```
COULD NOT CREATE DUS PROCESS.  
(INSTWARN #5)  
CREATEPROCESS ERROR: nn
```

ACTION

Please follow the actions described for INSTWARN #2.

#6 WARNING MESSAGE

```
AN INVALID LOGICAL DEVICE NUMBER WAS ENTERED.  
(INSTWARN #6)  
PLEASE ENTER ANOTHER LOGICAL DEVICE NUMBER FOR  
CREATION OF THE COLD LOAD TAPE.  
>>
```

ACTION

Please enter the valid logical device number of your tape drive.

#7 WARNING MESSAGE

```
INVALID DENSITY SPECIFIED.  
(INSTWARN #7)
```

ACTION

Please enter a valid tape density.

#8 WARNING MESSAGE

EXPECTED "YES" OR "NO".

ACTION

The input to the prompt was invalid. Please enter "YES" or "NO" at the prompt.

#9 WARNING MESSAGE

INVALID INPUT.
(INSTWARN #9)

ACTION

Please respond to the prompt as directed.

#10 WARNING MESSAGE

*WARNING -- THE FOLLOWING PRODUCTS MAY REQUIRE
CONFIGURATION CHANGES. HOWEVER, THIS WILL NOT AFFECT
THE SOFTWARE INSTALLATION FOR THESE PRODUCTS. THE
THE CONFIGURATION CHANGES MAY BE DONE AFTER COMPLETION OF
OF THE INSTALLATION. (INSTWARN #10)

ACTION

Data communication products exist on the system that may require changes to the configuration.
Please consult the appropriate reference manual after installation of the product is complete.

E.2 SYSTEM ERRORS

System-generated error messages, particular to the functioning of AUTOINST, and their resolutions are described below. Any other system errors are referenced in the appropriate MPE manual.

E.2.1 Out of Disk Space on LDEV1

If you received the message:

```
ERROR #326 OUT OF DISC SPACE ON LDEV1
```

Enter the following commands:

On a Series 37, MICRO 3000, or MICRO 3000/XE:

Ensure the keyswitch is in position 2. Enter:

```
CONTROL B  
H for HELP->START
```

Respond Y to abort the system.

On all other systems:

Enter:

```
CONTROL B  
>HALT
```

Perform a COOLSTART. When prompted "RECOVER LOST DISC SPACE?", respond Y and default everything else. It will require approximately ten minutes per 1000 files to recover the disk space. When the COOLSTART has completed, use the MPE VINIT command with the >COND 1 option.

Should the COOLSTART fail, perform a RELOAD from your backup tapes.

E.2.2 Out of Memory or Out of BANK 0

If you received the message:

```
ERROR #350 OUT OF MEMORY
or
ERROR #351 OUT OF BANK 0
```

Enter the following commands:

On a Series 37, MICRO 3000, or MICRO 3000/XE:

Ensure the keyswitch is in position 2. Enter:

```
CONTROL B
H for HELP->START
```

Respond Y to abort the system.

On all other systems:

Enter:

```
CONTROL B
>HALT
```

Perform a COOLSTART using one or more of the following options:

- If your system table sizes are too large, reconfigure them. Refer to Section VII of the MPE System Operation and Resource Management Reference Manual (32033-90005).
- If there are gaps in the logical device numbers which exceed the current number of spoolfiles, reconfigure the devices without gaps.
- If the new CST expansion firmware board is not installed on your system, decrease the system table sizes. Refer to Section 7 of the MPE System Operations and Resource Management Reference Manual (32033-90005).

If the COOLSTART fails, perform a RELOAD/SPREAD from the backup tapes.

WORKSHEET

APPENDIX

F

Release V.UU.FF number:

SYSSTART.PUB.SYS renamed to _____

Log File Numbers:

Manually installed products requiring I/O Configuration Changes (INSTWARN #1):

Special products requiring I/O Configuration Changes (INSTWARN #10):

SYSDUMP SNULL Configuration Values

DRT # for logical device 1	
LDEV # for the coldload device	
Device class for the coldload device	
LDEV # of the streams device	
Driver Name and LDEV # of any device with the same device name as the streams output device.	
EXTENDED CST	
PCB	
DISC REQUEST TABLE (QUEUE)	
SWAP TABLE	
PRIMARY MESSAGE TABLE	
SECONDARY MESSAGE TABLE	
MAX # OF CONCURRENT RUNNING PROGRAMS	
MAX CODE SEG SIZE	
MAX # OF CODES SEGMENTS/PROCESS	
MAX STACK SIZE	
MAX EXTRA DATA SEG(MENT) SIZE	
MAX # OF EXTRA DATA SEGMENTS/PROCESS	

Passwords and UDCs

User	User Password	Account	Account Password	Group	Group Password	UDC Filename(s)
MANAGER	_____	SYS	_____	PUB	_____	U) _____ A) _____ *S) _____
MGR	_____	TELESUP	_____	HP35136A	_____	U) _____ A) _____
FIELD	_____	SUPPCRT	_____	PUB	_____	U) _____ A) _____

Passwords and UDCs for HPOFFICE

User	User Password	Account	Account Password	Group	Group Password	UDC Filename(s)
MGR	_____	HPOFFICE	_____	PUB	_____	U) _____
WP	_____			HPPROFS	_____	U) _____
				HPTELEX	_____	A) _____
				WP	_____	
				MAILLIB	_____	
MGR	_____	HPWORD	_____	PUB	_____	U) _____ A) _____

* If you have installed COBOLII/V, be sure to add COBUDC.PUB.SYS to your SYSTEM UDC list.



HP 3000 MPE V/E UPDATE CHECKLIST

Following is a checklist of activities needed to update your system. If you want additional information on performing an activity, please consult the appropriate section in the manual. This checklist is for an UPDATE only. Do not use it for any other procedure.

CAUTION

If you are a beginning user, we recommend that you follow the instructions in the manual. This checklist is designed for those users who are experienced in performing updates to the HP 3000 MPE V/E systems.

ACTION

REFERENCE

Verify System Version (Section 2)

Back up system

Log on

Verify and record current version (*v.uu.ff*) of the system

: HELLO MANAGER.SYS,PUB
: ALTUSER MANAGER;HOME=PUB

: SHOWME
See worksheet

Update Preparation (Section 3)

Set system console, limits, jobfence

Warn users to log off

Abort jobs and sessions

Purge FILELIST.PUB.SYS

Store to tape and purge the group USL

Rename SYSSTART

Record new name

: CONSOLE 20
: LIMIT 1,1
: JOBFENCE 7
: SHOWJOB

: WARN@ log off message

: ABORTJOB #Jnnn
: ABORTJOB #Snnn

: PURGE FILELIST

: PURGEGROUP USL

: RENAME SYSSTART, filename

See worksheet

ACTION

- Terminate logging processes, if any
- Print or store to tape any system logfiles and purge them from PUB.SYS
- Print or store to tape and purge spoolfiles
- Disable data communication products, as applicable

- Encrypted passwords
- Disable UDC directory

- Security Monitor: suspend command disabling
If USERPASS=REQ has been used
"Please enter your choice"
"Proceed with the SUSPEND"

- Set global options
- Check system configuration

Update Existing Operating System (Section 4)

- If the *v* in your system *v.uu.ff* is C,D,E, or F, run PCONVERT
- Build and purge a dummy file for AUTOINST
- Shut down the system
- Update from the FOS tape
"WHICH OPTION...?"
"SYSTEM DISC DRT"
"ANY CHANGES?"
- Set time and date

REFERENCE

:SHOWLOGSTATUS
:LOG *logid*,STOP

:LISTF LOG#@
:LISTF NML?#@

:SHOWOUT SP

:DSCONTROL *ldev*;SHUT
:MRJECONTROL SIGNOFF;*hostid*
:MPLINE *ldev*;SHUT,NOW
:IMFCONTROL STOP *imfconfigfile*
:NRJECONTROL STOP;WSID=*wsidname*
:SNACONTROL STOP;NODE=*nodename*;
TYPE=*stoptype*
:NSCONTROL STOP
:NETCONTROL STOP

See Section 3.2

:RENAME
COMMAND.PUB.SYS,COMMOLD.PUB.SYS
:BUILD COMMAND.PUB.SYS
:HELLO MANAGER.SYS;HIPRI

:ALTUSER *username* USERPASS=REQ
:RUN SECCONF,RESET
5
YES

:RUN SECCONF.PUB.SYS

:SYSDUMP \$NULL (See page 3-3)

See Appendix B

:BUILD TAKESPAC;DEV=1;DISC=17000,1,1
:PURGE TAKESPAC

See page 4-2

>LOAD
UPDATE

N

See page 4-4

ACTION

REFERENCE

Restore the Files (Section 5)

- | | |
|---|--|
| <input type="checkbox"/> Start AUTOINST | <u>:RUN AUTOINST</u> |
| <input type="checkbox"/> Mount the FOS tape | |
| <input type="checkbox"/> "Has a SUBSYS tape been included ...?" | <u>Y/N</u> |
| <input type="checkbox"/> Mount the SUBSYS tape | |
| <input type="checkbox"/> Accounting structure created by AUTOINST | |
| <input type="checkbox"/> Installation jobs streamed by AUTOINST | |
| <input type="checkbox"/> Record products that need manual installation | See worksheet |
| <input type="checkbox"/> "DO YOU WANT TO INSTALL THESE PRODUCTS NOW...?" | <u>Y</u> |
| <input type="checkbox"/> Record products that may need additional configuration | See worksheet |
| <input type="checkbox"/> Record and remove passwords, if applicable | Use LISTDIR5 (See worksheet) |
| <input type="checkbox"/> Re-enable UDC directory | <u>:PURGE COMMAND.PUB.SYS</u>
<u>:RENAME</u>
<u>COMMOLD.PUB.SYS,COMMAND.PUB.SYS</u>
<u>:HELLO MANAGER.SYS;HIPRI</u> |
| <input type="checkbox"/> Re-enable UDCs, if applicable | See worksheet |
| <input type="checkbox"/> Install manually installed products: | See Section 6 |

The DUS and Coldload Tapes (Section 7)

- | | |
|---|--|
| <input type="checkbox"/> Re-enable passwords and UDCs | See worksheet |
| <input type="checkbox"/> Disable your UDC directory | <u>:RENAME</u>
<u>COMMAND.PUB.SYS,COMMOLD.PUB.SYS</u>
<u>:BUILD COMMAND.PUB.SYS</u>
<u>:HELLO MANAGER.PUB.SYS</u> |
| <input type="checkbox"/> Restart AUTOINST | <u>:RUN AUTOINST</u> |
| <input type="checkbox"/> DUS tape created by AUTOINST
Respond to dual-density drive message, if applicable | |

ACTION

- Coldload tape created by AUTOINST
- Coldstart the system from the Coldload tape.
- Set time and date
- Log on

Bring the System Up (Section 8)

- Create 64/68/70 diagnostics, if applicable
- Convert image databases, if applicable
- Install NS/3000 and Officeshare Lan/3000, if applicable
- Configure special products flagged by INSTWARN #10
- Log on
- Purge group CREATOR.SYS
- Re-enable security configuration
- USERPASS=REQ option?
- Replace passwords, if applicable
- Reinstate the original filename for SYSSTART
- Re-enable your UDC directory
- Re-enter any modifications to CATALOG.PUB.SYS
- Add any new SL segments and make a new coldload tape, if necessary

REFERENCE

See pages 7-3 to 7-5

See page 7-5

:HELLO MANAGER.SYS

See page 8-1

See page 8-1

:HELLO MANAGER.SYS
:STREAMS 10
:STREAM CONFJOB.NET.SYS

See page 8-2

:HELLO MANAGER.SYS

:PURGEGROUP CREATOR

:RUN SECCONF

:ALTUSER *username*;USERPASS=REQ

Use AUTOHIST.PUB.SYS

:RENAME *filename*,SYSSTART

:PURGE COMMAND.PUB.SYS

:RENAME

:COMMOLD.PUB.SYS,COMMAND.PUB.SYS

:HELLO MANAGER.SYS;HIPRI

See page 8-4

ACTION

- Update configuration file, if necessary
"Fileset to be scanned?"
"OK to convert NSCONF.NET.SYS?"

- Re-enable data communication products, as applicable

- Enable disc caching, if applicable

- Record the installation in the system logbook

REFERENCE

:RUN NMMGRVER
@.NET
Y

:LIMIT n,nn
:STREAMS 10
:DSCONTROL ldev;OPEN
:MRJECONTROL SIGNON
:MPLINE ldev,OPEN
:SNACONTROL START;NODE=nodename
:IMFCONTROL START imfconfigfile
:NRJECONTROL START;WSID=wsidname
:NETCONTROL START
:NSCONTROL START
:OUTFENCE n
:JOBFENCE n

:STARTCACHE ldev#



APPENDICE FRANÇAIS

Pour vous aider à effectuer au mieux la mise à jour de votre Système, le Centre de Support Technique a entrepris de traduire certaines parties essentielles des procédures d'installation.

Les parties traduites sont constituées d'un chapitre et de trois annexes de la documentation d'origine :

- Section 1 : Ce chapitre présente de manière générale les procédures d'installation de la nouvelle version de logiciel.
- Appendix B : Cette annexe montre l'utilisation, lorsqu'elle s'avère nécessaire, du programme PCONVERT.
- Appendix D : Cette annexe indique comment convertir les bases de données IMAGE au format TurboIMAGE.
- Appendix E : Cette annexe explique les messages d'erreurs ou d'alerte que vous pourrez éventuellement rencontrer lors de l'installation.

Nous vous invitons à faire part de vos remarques et commentaires en écrivant à :

HEWLETT-PACKARD FRANCE
Centre de Support Technique
à l'attention de José PEREZ
Z.A. de COURTABOEUF
1, Avenue du CANADA
91947 Les Ulis Cedex

INTRODUCTION SECTION 1

Ce document explique les étapes nécessaires pour mettre à jour le Système d'Exploitation de Base (FOS : Fundamental Operating System) actuel, et pour mettre à jour ou installer tous les sous-systèmes logiciels (SUBSYS) que vous avez acquis. Veuillez lire ce document avec attention pour vous familiariser avec le processus.

Une sauvegarde complète du Système est impérative avant de débiter la mise à jour. Cette mise à jour va durer de quatre à six heures, en fonction du nombre de produits SUBSYS acquis, et du type de Système et des périphériques utilisés. Il sera nécessaire de prévoir du temps supplémentaire s'il y a lieu de configurer de nouveaux produits de transmissions de données ou pour convertir des bases de données d'IMAGE en TurboIMAGE.

Note



Toute période de temps indiquée lors d'une étape d'installation n'est qu'une estimation.

Les moyens de stockage suivants seront nécessaires :

- Une bande ou une cartouche contenant le Système d'Exploitation de Base (FOS), fournie par Hewlett-Packard.
- Une bande ou une cartouche contenant les sous-systèmes logiciels acquis (SUBSYS), fournie par Hewlett-Packard.
- Une bande vierge de 2400 pieds ou une cartouche vierge de 600 pieds pour utiliser lors du "COLDLOAD". (D'autres bandes ou cartouches supplémentaires seront peut-être nécessaires.)
- Une bande vierge comme bande d'Utilitaires de Diagnostics du Système (DUS : Diagnostic Utility System). Ne pas réutiliser la bande ou cartouche DUS actuelle.
- Une disquette et une bande vierge pour créer les outils de Diagnostics de Localisation des Défauts (FLD : Fault Locating Diagnostics), si vous utilisez des Séries 64/68/70.
- Une bande vierge de 2400 pieds ou une cartouche vierge de 600 pieds comme support de "COLDLOAD" supplémentaire, s'il est nécessaire d'exécuter un SYSDUMP avant le début de la mise à jour.

Note



Si vous possédez un lecteur de cartouches multi-volumes sur un série 37, utilisez soit des cartouches de même dimension pendant toute l'installation, soit une cartouche de 600 pieds avant une cartouche de 150 pieds.

Plusieurs produits ne peuvent être totalement installés par AUTOINST. Ces produits demandent des étapes supplémentaires à accomplir. Ces étapes sont décrites dans la Section 6 "Manually Installed Products".

Avant de commencer la mise à jour de votre Système, nous vous conseillons de contacter votre Ingénieur de Support Logiciel HP pour étudier avec lui les contraintes particulières relatives aux bases de données et aux configurations de système nécessaires aux produits HPWORD/3000, HPDESKMANAGER/3000, HPTELEX II, ainsi qu'aux produits de transmissions de données.

Note

HPDESKMANAGER/3000 peut prendre jusqu'à une demi-journée pour effectuer une nouvelle installation, et jusqu'à deux jours pour une mise à jour.

SURVOL DU PROCESSUS DE MISE A JOUR

Les bandes de Système d'Exploitation de Base (FOS) et des sous-systèmes optionnels acquis (SUBSYS) contiennent du logiciel qui est expédié depuis l'usine.

La bande FOS contient tout le logiciel fourni de manière standard par HP sur tout Système HP3000. Cela inclut le système d'exploitation MPE, les utilitaires du système, les utilitaires de diagnostic ONLINE, et divers sous-systèmes de gestions de données (ex : TurboIMAGE, KSAM, QUERY).

La bande SUBSYS contient les produits logiciels HP optionnels que vous avez acquis.

Vous devez premièrement vérifier que la configuration de base de votre Système satisfait les exigences spécifiques des produits que vous avez acquis. (Le tableau de la page 3-6 fournit les valeurs nécessaires.) Pour déterminer si vous devez changer la configuration du Système afin de satisfaire les exigences liées à vos produits, on vous demandera d'effectuer un SYSDUMP \$NULL. Veuillez noter que tout périphérique configuré dans le Système de base doit être physiquement connecté au CPU.

Si votre configuration de base actuelle ne satisfait pas les exigences des logiciels que vous avez acquis, vous aurez besoin de faire tourner le programme SYSDUMP, de faire une bande "COLDLOAD", et de redémarrer le Système en "COLDSTART" avec celle-ci.

Dans tous les cas, vous arrêterez ensuite le système par un "SHUTDOWN", afin de charger la nouvelle version du système d'exploitation.

Après l'UPDATE, vous êtes prêt à faire tourner AUTOINST. Le programme AUTOINST redescend les fichiers système de la bande FOS. Ce processus prend à peu près 25 minutes. Quand les fichiers de la bande FOS seront redescendus sur votre Système, AUTOINST vous demandera si vous avez une bande SUBSYS parmi le jeu de bandes que vous avez reçu pour votre mise à jour.

Si vous n'avez pas de bande SUBSYS, AUTOINST lance les "STREAMS" nécessaires à la création de la structure comptable. A la fin de ces "STREAMS", votre installation sera terminée, et le Système deviendra opérationnel.

Si vous avez une bande SUBSYS dans votre jeu de bandes de mise à jour, le fait de répondre Y à la demande de la bande SUBSYS fera qu'AUTOINST redescendra automatiquement sur votre Système le contenu de la bande SUBSYS, puis lancera les "STREAMS" nécessaires pour créer la structure comptable. Quand la structure comptable sera créée, AUTOINST exécutera les fichiers de commandes d'installation de la majorité des produits se trouvant sur la bande SUBSYS. Certains produits demandent que vous accomplissiez quelques étapes manuelles pour achever leur installation (ex : activation d'UDCs, conversion de bases de données). AUTOINST marque ces produits, et imprime leur liste à l'écran. Ces produits sont divisés en 2 catégories.

L'une est indiquée par INSTWARN #1. Ces produits doivent être installés maintenant, en suivant les instructions données en Section 6 "Manually Installed Products". (Si vous n'installez pas ces produits maintenant, une deuxième bande de "COLDLOAD" sera nécessaire ultérieurement.)

La deuxième catégorie est indiquée par INSTWARN #10. Ces produits peuvent nécessiter, après la mise à jour du Système, des étapes de configuration spécifiques. Il sera bon de cataloguer ces produits sur la feuille de travail, pour une référence ultérieure. (Veuillez vous référer à la Section 8.4. "Special Products".)

AUTOINST vous demande à arrêter son exécution, pour permettre une installation manuelle des produits catalogués dans INSTWARN #1.

Quand vous aurez accompli les étapes manuelles exigées pour installer ces produits particuliers, vous devrez relancer AUTOINST. On vous demandera de monter une bande pour créer la bande de diagnostics (DUS) utilisable par les ingénieurs du Service Après-Vente HP. AUTOINST affiche un message vous informant que la bande DUS a été créée. Retirez l'anneau d'écriture, étiquetez la bande DUS avec la date et la V.UU.FF, et archivez la bande. Cette bande contient des informations nécessaires à votre Ingénieur Après-Vente HP pour diagnostiquer et identifier un problème matériel survenant sur votre Système après la mise à jour.

Quand la bande DUS aura été créée, AUTOINST vous demandera de monter la bande nécessaire pour le "COLDLOAD".

AUTOINST, à ce moment, appelle le programme SYSDUMP, qui traite les données relatives à la mise à jour, et incorpore des segments d'USLs (selon le besoin) dans la SL. Ces traitements peuvent prendre jusqu'à deux heures. Le dérouleur de bandes ne deviendra actif qu'à la fin de ceux-ci. Quand les données sont traitées, SYSDUMP les écrit sur la bande. AUTOINST affiche un message vous indiquant que la bande de "COLDLOAD" est prête. Etiquetez cette bande avec la date et la V.UU.FF. Retirez l'anneau d'écriture, et archivez la bande.

Pour terminer la mise à jour de votre Système, vous devez arrêter la machine par un "SHUTDOWN" et monter la bande de "COLDLOAD" récemment créée. Redémarrez le Système (en utilisant les options COLD ou LOAD). Le Système sera alors mis à jour à partir de cette bande.

A ce moment, la mise à jour est terminée. Il ne vous rest plus qu'à accomplir les procédures de "Démarrage du Système" ("System Startup"), telles que décrites dans la Section 8 ("Bring the system Up").

Quand l'installation est terminée, AUTOINST change le nom de HPINSTFL.PUB.SYS en AUTOHIST.PUB.SYS. Ce fichier contient l'historique de l'installation la plus récente. Vous voudrez peut-être imprimer ce fichier, dans un but d'archivage.

Les tableaux des pages 1-4 et 1-5 de la Section 1 fournissent une description étape par étape de ce processus de mise à jour du Système.

UTILISATION DE PCONVERT

APPENDIX B

PCONVERT est un programme de conversion qui purge tous les utilitaires propres aux versions MPE IV et MPE V/P. Cette procédure est nécessaire si vous effectuez une mise à jour à partir d'une version MPE C/D (MPE IV) ou E/F (MPE V/P).

Note



Si un utilitaire propre à MPE IV ou MPE V/P ne réside pas dans PUB.SYS, il ne sera pas purgé. Toute tentative pour exécuter l'un de ces utilitaires sur un système en MPE V/E pourra engendrer des "hang system" ou des "system failure".

Ne suivez pas cette procédure si vous effectuez votre mise à jour depuis une version MPE G.On.On ou ultérieure. Si vous tentez de le faire, vous serez contraint d'effectuer un RELOAD.

Le programme PCONVERT. PUB.SYS exige 4000 secteurs de mémoire virtuelle sur le LDEV

1. Un SYSDUMP \$NULL indiquera l'allocation de mémoire virtuelle dans la section DISC ALLOCATION CHANGES. Si vous avez moins de 4000 secteurs alloués, veuillez contacter dans le cadre de votre contrat le Centre de Support Technique.

1. Trois espaces disque contigus de 14.000, 2.000, et 1.000 secteurs sont nécessaires à l'exécution de PCONVERT. Si vous n'avez pas suffisamment d'espace disque libre contigu, sauvegardez quelques fichiers sur bande magnétique, et purgez les (d'autres alternatives sont présentées dans l'appendice "Error Messages and Warnings"). Effectuez les commandes suivantes pour réserver l'espace disque nécessaire :

```
: BUILD TAKESPC1;DEV=1;DISC=14000,1,1  
: BUILD TAKESPC2;DEV=1;DISC=2000,1,1  
: BUILD TAKESPC3;DEV=1;DISC=1000,1,1
```

2. Purgez ces fichiers.

```
: PURGE TAKESPC1  
: PURGE TAKESPC2  
: PURGE TAKESPC3
```

3. Arrêtez le système.

```
CONTROL A  
=SHUTDOWN
```

Si le système ne s'arrête pas dans la minute suivante, arrêtez manuellement la machine :

```
CONTROL B  
=>HALT
```

- démarrez le système en COOLSTART.

=>START

- MPE affichera la version du système et initialisera un dialogue interactif.

```
WHICH OPTION (WARMSTART/COOLSTART)? COOLSTART
ANY CHANGES? N
```

Après environ 5 minutes, vous verrez s'afficher :

```
DATE (N/D/Y)? mm/dd/yy
TIME (H:M)? hh:mm ** 24 hour format **
```

Le système sera opérationnel.

- Connectez vous :

```
:HELLO MANAGER.SYS
:LIMIT 1,1
```

- Montez la bande FOS sur le périphérique de COLDLOAD et effectuez les commandes suivantes. Reportez vous à la feuille de travail pour déterminer le DEVICECLASS du périphérique de COLDLOAD.

```
:FILE T;DEV=devclass
:RESTORE #T;PCONVERT;SHOW
```

- Répondez à la requête d'accès à la bande. Reportez vous à la feuille de travail pour déterminer le LDEV # du périphérique de COLDLOAD.

```
?time/job/pin/LDEV# FOR "T" ON devclass (NUM)?
```

```
CONTROL A
=REPLY pin, ldev
```

- Dès que le fichier est redescendu sur le Système, effectuez :

```
:RUN PCONVERT
```

Confirmez que PCONVERT doit effectivement s'exécuter en répondant Y à la question. Le système s'arrêtera après cinq secondes.

```
OK TO PROCEED (Y/N)? Y
```

CONVERSION DES BASES IMAGE

APPENDIX D

Si, avant d'effectuer la mise à jour de votre Système, celui-ci se trouvait dans une version de logiciel de base antérieure à la U-MIT (MPE V/P, MPE V/E, T-MITs, ...), vous aurez besoin de convertir vos bases de données d'IMAGE en TurboIMAGE en utilisant le programme DBCONV. Cet utilitaire restructure le fichier racine et les fichiers maîtres manuels, mais laisse les fichiers maîtres automatiques, les fichiers détails et les fichiers maîtres indépendants inchangés.

D'IMAGE A TURBOIMAGE

Pour convertir d'IMAGE/3000 en TurboIMAGE/3000 suivez les étapes suivantes :

Note Avant de commencer, effectuez un DBSTORE de chaque base de données.



1. Connectez vous dans le compte de la base de données :

:HELLO MANAGER.accountname,groupname



2. Pour déterminer

- L'espace disque supplémentaire total requis par la base de données à convertir
- l'espace disque temporaire requis par DBCONV
- s'il existe des incohérences dans la définition des fichiers de la base

tapez :

:RUN DBCONV.PUB.SYS.VERIFY

Database Name? *database*

Starting conversion disc space analysis and verification for database
DATABASENAME

Total extra disc space required for converted database: XX sectors

The temporary disc space required: XX sectors

Inconsistency is not detected in the root file.

Conversion disc space analysis and verification is done!

END OF PROGRAM

3. Désactivez l'ILR :

```
:RUN DBUTILB.PUB.SYS  
>>DISABLE databasename FOR ILR  
>>EXIT
```

4. Convertissez la base de données :

```
:RUN DBCONV.PUB.SYS
```

```
HP32215C.00 TurboIMAGE/3000:  DBCONV (C) COPYRIGHT HEWLETT-PACKARD CO.  
1984
```

```
DATABASE NAME? databasename
```

```
DATABASE has not been modified since last DBSTORE.  
Continue (YES/NO)? Yes
```

```
DATABASE01 has been converted.  
DATABASE02 has been converted.  
DATABASE03 has been converted.
```

```
.  
. .  
. .
```

```
Conversion is done !
```

5. Répétez les étapes 1 à 4 pour chacune de vos base de données.

Methode par Stream

Plutôt que de convertir chaque base de données individuellement, vous pouvez utiliser le fichier MASTUSE de format "EDITOR" pour convertir toutes vos bases de données par un traitement différé.

1. Connectez vous :

```
:HELLO MANAGER.SYS.CONVALL
```

2. Activez l'UDC:

```
:SETCATALOG CONVUDC
```

3. Utilisez MASTUSE :

```
:EDITOR  
/USE MASTUSE
```

4. Répondez aux questions générées par MASTUSE. Quand on vous demande le MANAGER NAME, tapez MANAGER, et non pas MANAGER.SYS.

DE TURBOIMAGE A IMAGE

Si vous remettez à jour votre Système dans une version de logiciel de base antérieure à la U-MIT (T-MIT par exemple), vous devrez reconverter vos bases de données de TurboIMAGE en IMAGE comme suit :

1. Connectez vous dans le compte de la base de données :

```
:HELLO MANAGER.accountname,groupname
```

2. Désactivez l'ILR :

```
:RUN DBUTILB.PUB.SYS  
>>DISABLE databasename FOR ILR  
>>EXIT
```

3. Convertissez la base de données :

```
:RUN DBCONV.PUB.SYS,BACKWARD
```

```
DATABASE NAME? databasename  
  
DATABASE has not been modified since last DBSTORE.  
Continue (YES/NO)? YES  
  
DATABASE01 has been converted back.
```

4. Répétez les étapes 1 à 3 pour chacune de vos bases de données.

Methode par Stream

Si vous ne voulez pas convertir chaque base de données individuellement, vous pouvez lancer la conversion de TurboIMAGE en IMAGE par "Stream" en suivant ces étapes :

1. Connectez vous :

```
:HELLO MANAGER.SYS.CONVALL
```

2. Modifiez le fichier TMPCONV3 comme suit :

```
*Changez RUN DBUTILB.PUB.SYS en RUN DBUTIL.PUB.SYS aux lignes 88 and 122.  
*Changez RUN DBCONV.PUB.SYS en RUN DBCONV.PUB.SYS, BACKWARD en ligne 131.
```

3. Lancez le traitement :

```
:STREAM TMPCONV3
```

MESSAGES D'ERREUR ET D'ALERTE

APPENDIX E

Les messages d'erreur d'AUTOINST, et leurs solutions appropriées, sont fournis dans cet appendice. Trois messages d'erreur système classiques sont également fournis. Tout autre message système peut être trouvé dans le manuel MPE ou dans le manuel du Sous-Système utilisé.

MESSAGES AUTOINST

Les messages d'erreur et les avertissements d'AUTOINST sont imprimés en ordre numérique croissant. Des solutions sont fournies avec chaque message. Si vous rencontrez un message d'erreur d'AUTOINST qui n'est pas référencé ci-dessous, contactez dans le cadre de votre contrat le Centre de Support Technique.

Messages d'Erreur

#1

```
INSTALLATION CAN ONLY BE PERFORMED BY MANAGER.SYS.PUB.  
(INSTERR #1)
```

Connectez vous comme suit, et relancez AUTOINST.

```
:HELLO MANAGER.SYS,PUB
```

#2

```
*WARNING -- THIS SYSTEM DOES NOT HAVE ENOUGH  
DISC SPACE ON LDEV 1. (INSTERR #2)
```

Exécutez FREE5.PUB.SYS pour déterminer l'espace disque à libérer. Utilisez l'une des options ci-dessous pour récupérer de l'espace disque :

- (recommandée) Sauvegardez et purgez quelques fichiers jusqu'à obtention de place disque libre suffisante.
- Utilisez la commande : VINIT avec l'option >COND 1.
- Effectuez un COOLSTART, en répondant Y à la question "RECOVER LOST DISC SPACE". Ceci requiert approximativement 10 minutes pour 1000 fichiers. Après le COOLSTART, utilisez la commande : VINIT avec l'option >COND 1.

Dès que vous avez libéré avec succès 17.000 secteurs contigus d'espace disque, relancez AUTOINST.

#3

UNRECONIZABLE PARAMETER ENTERED. (INSTERR #3)

Entrez le paramètre info, comme indiqué lors de l'exécution d'une installation de logiciels additionnels.

#4

CREATION OF THE ACCOUNTING STRUCTURE HAS
FAILED. (INSTERR #4)

Ce message peut apparaître si :

- D'autres jobs ou sessions sont connectés sur le système. Si tel est le cas, déconnectez ces jobs/sessions, ainsi que tous les jobs différés, puis relancez AUTOINST.
- Certaines UDCs n'ont pas été désactivées au niveau système, compte, ou utilisateur. Si tel est le cas, désactivez les. (Se référer au tableau des Syntaxes de la feuille de travail pour la syntaxe correcte.) Déconnectez tous les jobs différés, et relancez AUTOINST.
- Utilisez SPOOK (4/5).PUB.SYS pour contrôler les comptes rendus des jobs de structure comptable d'AUTOINST. Si nécessaire, prenez les mesures correctives appropriées puis relancez AUTOINST. Si vous ne pouvez résoudre le problème, ou si AUTOINST échoue à nouveau, veuillez contacter dans le cadre de votre contrat le Centre de Support Technique.

Si l'échec de la création de la structure comptable n'a été causé par aucune des conditions référencées ci-dessus, veuillez contacter dans le cadre de votre contrat le Centre de Support Technique.

#5

THE FILES FROM THE FOS TAPE WERE NOT SUCCESSFULLY
RESTORED. (INSTERR #5)

Utilisez votre éditeur de texte pour contrôler le fichier FOSLIST.PUB.SYS. Les messages d'erreurs contenus dans ce fichier indiquent les problèmes rencontrés lors de la restauration des fichiers de la bande FOS. Effectuez les corrections appropriées puis relancez AUTOINST. Si vous échouez une seconde fois, veuillez contacter dans le cadre de votre contrat le Centre de Support Technique.

#6

THE SUBSYS TAPE HAS NOT BEEN SUCCESSFULLY RESTORED.
(INSTERR #6)

Utilisez votre éditeur de texte pour contrôler le fichier SUBLIST.PUB.SYS. Les messages d'erreur contenus dans ce fichier indiquent les problèmes rencontrés lors de la restauration des fichiers de la bande SUBSYS. Prenez les mesures correctives appropriées et relancez AUTOINST. Si vous échouez une seconde fois, veuillez contacter dans le cadre de votre contrat le Centre de Support Technique.

#7

COULD NOT PURGE THE FILE FILELIST.PUB.SYS (INSTERR #7)

Si le fichier FILELIST.PUB.SYS existe déjà, et si vous avez besoin de le garder, donnez lui un nouveau nom en utilisant la commande : RENAME. Sinon, purgez le et relancez AUTOINST.

#8

THE COLD LOAD TAPE WAS NOT SUCCESSFULLY CREATED. (INSTERR #8)

Utilisez l'utilitaire SPOOK (4/5).PUB.SYS pour inspecter les fichiers spool générés par AUTOINST pour le job DUMP.PUB.SYS. Prenez si nécessaire les mesures correctives appropriées et relancez AUTOINST. Si vous ne pouvez résoudre le problème, ou si AUTOINST échoue à nouveau, veuillez contacter dans le cadre de votre contrat le Centre de Support Technique.

#9

FOUND INVALID COLD LOAD LOGICAL DEVICE NUMBER. (INSTERR #9)

Le numéro de périphérique trouvé par AUTOINST n'est pas valide (ex: inférieur à 0 ou supérieur à 999). Vérifiez votre configuration système, entrez la valeur correcte et relancez AUTOINST. Si cette erreur persiste, veuillez contacter dans le cadre de votre contrat le Centre de Support Technique.

#11

DLGINFO HAS BEEN PURGED FROM THE SYSTEM. (INSTERR #11)

Restaurez DLGINFO.PUB.SYS de la bande FOS, et relancez AUTOINST. Assurez vous que vous utilisez la bande FOS appropriée.

#12

PROGRAM FILE INSTALL.PUB.SYS NOT FOUND. (INSTERR #12)

Restaurez INSTALL.PUB.SYS de la bande FOS et relancez AUTOINST. Assurez vous que vous utilisez la bande FOS appropriée.

#13

THE PROGRAM INSTALL.PUB.SYS WAS NOT SUCCESSFUL. (INSTERR #13)

Ce message apparait en même temps que INSTERR #8. Reportez vous pour les mesures appropriées aux instructions données concernant l'INSTERR #8.

#18

TEMPLATE HAS BEEN PURGED FROM THE SYSTEM. (INSTERR #18)

Restaurez TEMPLATE.PUB.SYS de la bande FOS, et relancez AUTOINST. Assurez vous que vous utilisez la bande FOS appropriée.

#19

SUPACCT HAS BEEN PURGED FROM SYSTEM. (INSTERR #19)

Restaurez SUPACCT.PUB.SYS de la bande FOS et relancez AUTOINST. Assurez vous que vous utilisez la bande FOS appropriée.

#20

```
CYCLIC JOB CALL ENCOUNTERED.  JOB PROCESSING ifilename
(INSTERR #20)
```

Entrez LISTF I???????.USL.SYS au clavier.

- Si le fichier INDIRECT existe, purgez le, et relancez AUTOINST.
- Si le LISTF affiche le *ifilename* identifié dans le message d'erreur, vérifiez que ce fichier contient des commandes MPE valides. Si tel n'est pas le cas, purgez ce fichier ou déplacez le hors du groupe/compte USL.SYS.
- Si le LISTF affiche le *ifilename* identifié dans le message d'erreur, et si la vérification du fichier révèle qu'il contient des commandes MPE valides, alors ce fichier peut être corrompu. Purgez le, et restaurez le à partir de la bandes SUBSYS. Relancez AUTOINST.

Si AUTOINST échoue encore avec cette erreur, veuillez contacter dans le cadre de votre contrat le Centre de Support Technique.

#21

```
INVALID JOB ENCOUNTERED.  JOB PROCESSING: ifilename
(INSTERR #21)
```

Suivez les instructions données pour l'erreur INSTERR #20.

#22

```
AN INSTALLATION JOB STREAM HAS FAILED.  JOB STREAMING: ifilename
(INSTERR #22)
```

Utilisez SPOOKS pour déterminer la cause de l'échec du JOB. (TEXT du fichier spool sous SPOOK puis lecture du fichier.) Si vous avez besoin du numéro de JOB utilisez EDITOR pour faire un TEXT de HPINSTFL. Les numéros de JOB apparaissent à la fin du fichier HPINSTFL.

#28

```
INSTALLATION FILE CALLED BY JOB.  JOB PROCESSING: ifilename
(INSTERR #28)
```

Suivez les instructions données pour l'erreur INSTERR #20.

#29

```
UNABLE TO RECOVER INSTALLATION FILE PROCESSING.  
(INSTERR #29)
```

Un fichier d'installation nécessaire a été purgé. Restaurez I??????.USL.SYS de la bande SUBSYS, et relancez AUTOINST. Assurez vous que vous utilisez la bande SUBSYS appropriée.

#30

```
AUTOINST DOES NOT SUPPORT STREAMING EXTERNAL JOBS  
FROM WITHIN INSTALLATION FILE.  
JOB PROCESSING: ifilename  
(INSTERR #30)
```

Suivez les instructions données pour l'erreur INSTERR #20.

Messages d'Alerte

#1

```
WARNING -- THIS PROGRAM CANNOT INSTALL THE PRODUCTS  
LISTED BELOW. IF YOU WANT TO CONTINUE WITH AUTOINST  
THE COLD LOAD TAPE WILL NOT INCLUDE THESE PRODUCTS.  
(INSTWARN #1)
```

La bande SUBSYS contient des produits qui ne sont pas directement installables par AUTOINST. Installez vous-même ces produits avant de créer la bande de coldload. Si vous ne le faites pas, vous devrez créer une bande de coldload en plus de celle générée par AUTOINST.

#2

```
THE CE DIAGNOSTICS TAPE WAS NOT SUCCESSFULLY CREATED  
HOWEVER, THIS WILL NOT AFFECT THE INSTALLATION.  
(INSTWARN #2)
```

Quand AUTOINST a fini de s'exécuter, montez une bande vierge (avec anneau d'écriture) sur le dérouleur. Mettez le dérouleur "on-line" et exécutez les commandes suivantes:

```
:HELLO FIELD.SUPPORT,HP32331  
:RUN COPYDUS
```

Labellez cette bande : "DUS" suivi de la date et de la révision MPE (V.UU.FF).

#3

```
LOGICAL DEVICE nn IS AN INVALID COLD LOAD MEDIA DEVICE.  
(INSTWARN #3)  
PLEASE ENTER ANOTHER LOGICAL DEVICE NUMBER FOR  
CREATION OF THE COLD LOAD TAPE.  
>>
```

Entrez un numéro valide de périphérique logique.

#4

```
CANNOT CREATE DUS TAPE BECAUSE OF INVALID LDEV TYPE  
(INSTWARN #4)
```

Suivez les actions décrites pour l'erreur INSTWARN #2.

#5

```
COULD NOT CREATE DUS PROCESS.  
(INSTWARN #5)  
CREATEPROCESS ERROR: nn
```

Suivez les actions décrites pour l'erreur INSTWARN #2.

#6

```
AN INVALID LOGICAL DEVICE NUMBER WAS ENTERED.  
(INSTWARN #6)  
PLEASE ENTER ANOTHER LOGICAL DEVICE NUMBER FOR  
CREATION OF THE COLD LOAD TAPE.  
>>
```

Entrez un numéro valide de périphérique logique.

#7

INVALID DENSITY SPECIFIED.
(INSTWARN #7)

Entrez une densité de bande valide.

#8

EXPECTED "YES" OR "NO".

Votre réponse est invalide. Répondez par "YES" ou "NO" à la question.

#9

INVALID INPUT.
(INSTWARN #9)

Répondez à la question comme indiqué.

#10

*WARNING -- THE FOLLOWING PRODUCTS MAY REQUIRE
CONFIGURATION CHANGES. HOWEVER, THIS WILL NOT AFFECT
THE SOFTWARE INSTALLATION FOR THESE PRODUCTS. THE
CONFIGURATION CHANGES MAY BE DONE AFTER COMPLETION OF
THE INSTALLATION. (INSTWARN #10)

Des logiciels de transmissions de données présents sur le système peuvent exiger des changements dans la configuration. Consultez les manuels de référence appropriés dès la fin de l'installation de ces produits.



3
.



r
.



READER COMMENT SHEET

We welcome your evaluation of this manual. Your responses and comments help us to improve our publications for you. Please answer the following questions and return it to us at your earliest convenience.

1. Which of the following most accurately describes your job responsibilities?

System Manager Operations Supervisor Operator Other: _____

2. Which HP 3000 machine(s) are you running?

Series 37/MICRO 3000 Series 4X Series 5X Series 6X/70

3. How many times have you performed an Installation/Update/Add-On?

1 2 to 3 4 to 6 7 or more

4. How would you rate the ease of use/clarity of this manual on a scale from 1 to 4?

(Good) 1 -- 2 -- 3 -- 4 (Poor)

Comment: _____

5. How would you rate the quantity of information in this manual, excluding manually installed products, on a scale from 1 to 4?

(Too much) 1 -- 2 -- 3 -- 4 (Not enough)

Comment: _____

6. If you installed any manually installed products (e.g. HPWORD, HPDeskManager, etc.), how would you rate the quantity of information for these products on a scale from 1 to 4?

(Too much) 1 -- 2 -- 3 -- 4 (Not enough)

Products installed: _____

7. What changes can we make to this Manual to make it more useful for you and your organization?

FROM: _____ Date: _____

Name _____

Company _____

Address _____

Part No. 32033-90036
Printed in U.S.A. 9/92
R3237





Customer Order Number

32033-90036

Printed in USA

**** For HP Internal Reference Only ****

Manufacturing Part Number

32033-90272

