

HP 3000 Computer Systems



Index to MPE Documents



5303 STEVENS CREEK BLVD., SANTA CLARA, CALIFORNIA 95050

NOTICE

The information contained in this document is subject to change without notice.

HEWLETT-PACKARD MAKES NO WARRANTY OF ANY KIND WITH REGARD TO THIS MATERIAL, INCLUDING, BUT NOT LIMITED TO, THE IMPLIED WARRANTIES OF MERCHANTABILITY AND FITNESS FOR A PARTICULAR PURPOSE. Hewlett-Packard shall not be liable for errors contained herein or for incidental or consequential damages in connection with the furnishing, performance or use of this material.

Hewlett-Packard assumes no responsibility for the use or reliability of its software on equipment that is not furnished by Hewlett-Packard.

This document contains proprietary information which is protected by copyright. All rights are reserved. No part of this document may be photocopied, reproduced or translated to another program language without the prior written consent of Hewlett-Packard Company.

LIST OF EFFECTIVE PAGES

The List of Effective Pages gives the date of the current edition and of any pages changed in updates to that edition. Within the manual, any page changed since the last edition is indicated by printing the date the changes were made on the bottom of the page. Changes are marked with a vertical bar in the margin. If an update is incorporated when an edition is reprinted, these bars are removed but the dates remain. No information is incorporated into a reprinting unless it appears as a prior update.

Third Edition August 1978

PRINTING HISTORY

New editions are complete revisions of the manual. Update packages, which are issued between editions, contain additional and replacement pages to be merged into the manual by the customer. The date on the title page and back cover of the manual changes only when a new edition is published. When an edition is reprinted, all the prior updates to the edition are incorporated. No information is incorporated into a reprinting unless it appears as a prior update. The edition does not change.

The software product part number printed alongside the date indicates the version and update level of the software product at the time the manual edition or update was issued. Many product updates and fixes do not require manual changes, and conversely, manual corrections may be done without accompanying product changes. Therefore, do not expect a one to one correspondence between product updates and manual updates.

First Edition	June 1976	32002A.00
Second Edition	Dec 1977	32002A.00
Third Edition	August 1978	32002B.00

For the second and third editions, the index was revised to reflect new manuals and changes in updated manuals.

HP Computer Museum
www.hpmuseum.net

For research and education purposes only.

This manual is one of the set of manuals that document the Multiprogramming Executive-III (MPE-III) Operating System, and is a master index of the MPE-III documents.

The manual plan on the next page indicates the position of this manual (shaded block) in the overall set.

Preface to the Third Edition

The MPE Manuals Master Index has been revised to reflect the updated versions of the MPE manuals. Several new manuals have been added to the list in the Introduction. These include the *DS/3000 to DS/1000 Reference Manual for HP 3000 Users*, *MTS/3000 Reference Manual*, *MRJE/3000 Reference Manual*, *Using Cobol*, and *Communications Pocket Guide*.

In addition, the following communications manuals have been added to the list in the introduction:

HP 30032B Asynchronous Terminal Controller, Installation and Service Manual

HP 30037A Asynchronous Repeater, Installation and Service Manual

HP 30055A Synchronous Single-Line Controller, Installation and Service Manual

HP 3055A Synchronous Single-Line Controller, Stand-Alone Diagnostics Manual

Hardwired Serial Interface Installation and Service Manual

Hardwired Serial Interface Stand-Alone Diagnostic Manual

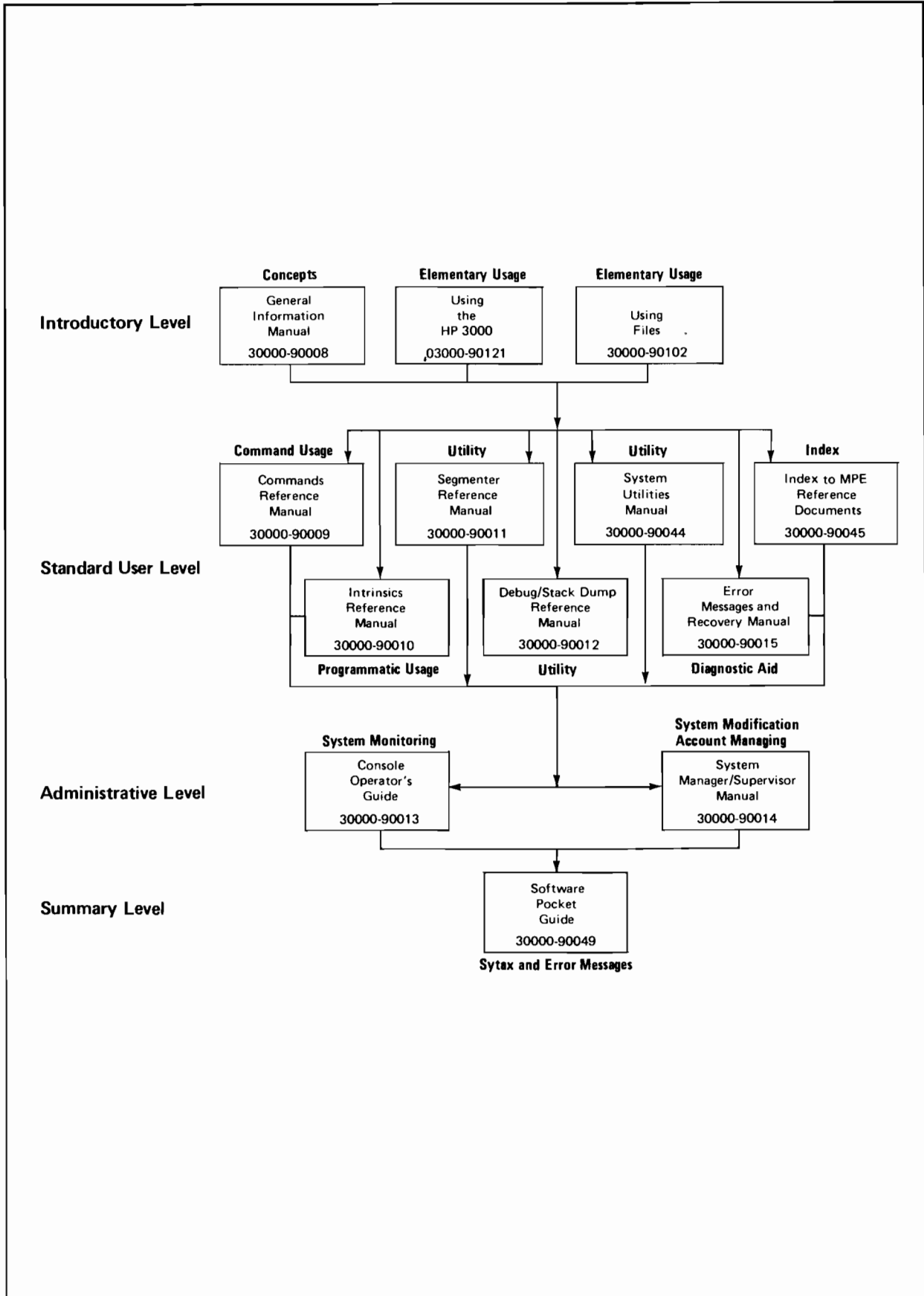
DS/3000 Modem Link Site Preparation and Installation Manual

DS/3000 Hardwired Link Site Preparation and Installation Manual

MTS/3000 Site Preparation and Installation Manual

HP 30032B Terminal Data Interface Diagnostic Manual

MANUAL PLAN



CONVENTIONS USED IN THIS MANUAL

The index contained in this manual is organized in the following manner:

Topic
Name of manual (abbreviated)
Page(s) in the manual where the topic is discussed.

For example,

DRT ENTRY NUMBER SUPR 6-16

If a topic is discussed in more than one manual, the entry is as follows:

DS SUBQUEUE INTR 9-7
 SUPR 6-30

CONTENTS

Title	Page
Introduction	1
HP 3000 Series III User Manuals	1
MPE Manuals Master Index	12

ILLUSTRATIONS

Title	Page
HP 3000 Series III Manuals	3

INTRODUCTION

This manual provides a master index of the Multiprogramming Executive (MPE III) Operating System manuals for the HP 3000. In addition, a listing of the complete set of user manuals for HP 3000 Computer Systems operating under MPE III, and a brief description of the contents of each, is provided.

MP 3000 (MPE III) USER MANUALS

The set of all HP 3000 (MPE III) user manuals is shown in figure 1. Brief descriptions of the contents of each manual are presented in the following paragraphs.

MPE Commands Reference Manual (Part No. 30000-90009)

Describes how to communicate with MPE using operating system commands entered through an interactive terminal or as part of a batch job stream.

MPE Intrinsic Reference Manual (Part No. 30000-90010)

Describes how to communicate with MPE programmatically using intrinsic (system procedure) calls. This manual also describes the capabilities that are available to users who have been assigned special attributes by the System Manager/System Supervisor.

MPE Segmenter Reference Manual (Part No. 30000-90011)

Describes how to manage User Subprogram Library (USL) files, build and manage Segmented Library (SL) files, and alter the segmentation of a program using the MPE Segmenter.

MPE Debug/Stack Dump Reference Manual (Part No. 30000-90012)

Describes how to debug programs using the debug and stack dump features of MPE.

MPE System Utilities Manual (Part No. 30000-90044)

Describes how to use MPE system utilities which perform such functions as copying disc files to magnetic tape for later retrieval, printing analytical listings of main memory dumps, modifying and listing the content of disc files, and displaying or modifying the content of Segmented Library (SL) files.

MPE Index

System Manager/System Supervisor Manual (Part No. 30000-90014)

Describes the commands and capabilities available to the system administrators (System Manager, System Supervisor, and Account Manager) of an HP 3000 Computer System operating under MPE III.

Console Operator's Guide (Part No. 30000-90013)

Describes the commands and functional capabilities available to the Console Operator of an HP 3000 operating under MPE III. This manual also describes the operating instructions for the machine-resident microdiagnostic programs.

Error Messages and Recovery Manual (Part No. 30000-90015)

Summarizes the probable causes and recommended recovery actions for operating system and subsystem error messages.

HP 3000CX to HP 3000 Series II Program Conversion Guide (Part No. 30000-90046)

Describes how to convert programs and data files created on an HP 3000CX so that they can be used on an HP 3000 (MPE III). This manual covers MPE, FORTRAN, BASIC, SPL, and IMAGE.

Communications Pocket Guide (Part No. 32902-90005)

Describes HP 3000 data communications subsystems and related data communications hardware.

DS/3000 to DS/1000 Reference Manual for HP 3000 Users (Part No. 32190-90005)

Describes how a HP 3000 user can communicate with HP 1000 computer systems using the HP Distributed Systems Network.

MTS/3000 Reference Manual (Part No. 32193-90002)

Describes the Multipoint Terminal Software.

MRJE/3000 Reference Manual (Part No. 32192-90001)

Reference manual for the Multileaving Remote Job Entry Subsystem.

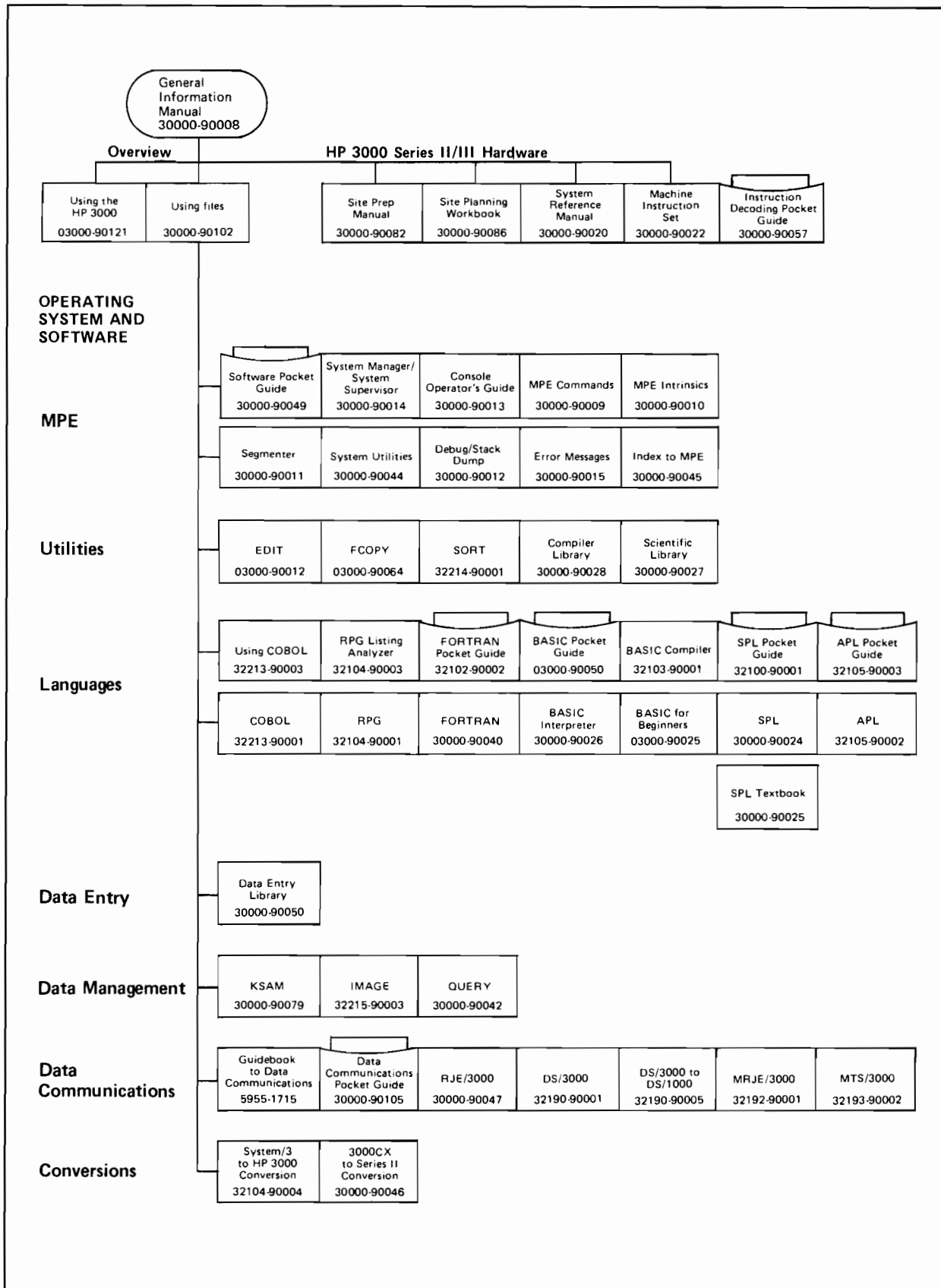


Figure 1. HP 3000 Manuals (MPE III)

MPE Index

HP 3000 MPE III Software Pocket Guide (Part No. 30000-90049)

Summarizes all MPE commands, intrinsics (system procedures), and File System error messages; all Text Editor, File Copier, Sort/Merge, and 2780/3780 Emulator commands; and all language compiler subsystem commands. Also summarizes the ASCII character set and collating sequence, the HP 3000 machine instruction set, the condition codes and status register, and the interrupt/trap segments and parameters.

IBM SYSTEM/3 TO HP 3000 Conversion Guide (Part No. 32104-90004)

Describes how to convert programs and data files created on an IBM System/3 so that they can be used on an HP 3000 operating under MPE III.

Site Preparation Manual (Part No. 30000-90082)

Site Planning Workbook (Part No. 30000-90086)

These two manuals help you prepare your site for the installation of an HP 3000 Series II/III Computer System.

System Reference Manual (Part No. 30000-90020)

Provides a detailed technical description of the architecture and principles of operation of the HP 3000 Series II/III Computer System.

Machine Instruction Set Reference Manual (Part No. 30000-90022)

Describes all of the machine instructions of the HP 3000 Series II Computer System.

COBOL/3000 Reference Manual (Part No. 32213-90001)

Describes the constructs and use of the COBOL/3000 language.

Using Cobol: A Guide for New Users of HP 3000 Computer Systems (Part No. 32213-90003)

Guides new users step-by-step through developing a COBOL program on the HP 3000.

RPG/3000 Compiler Reference and Application Manual (Part No. 32104-90001)

Describes the constructs and use of the RPG/3000 language.

RPG Listing Analyzer (Part No. 32104-90003)

A column and field template which makes it easier to read RPG listings.

FORTTRAN/3000 Reference Manual (Part No. 30000-90040)

Describes the constructs and use of the FORTRAN/3000 language.

BASIC/3000 Interpreter Reference Manual (Part No. 30000-90026)

Describes the constructs and use of the BASIC/3000 language.

BASIC/3000 Compiler Reference Manual (Part No. 32103-90001)

Describes how to compile a BASIC/3000 program.

BASIC for Beginners (Part No. 03000-90025)

Describes the following five functional elements of BASIC/3000:

Calculating values.

Transferring control.

Looping.

Functions and subroutines.

Strings and files.

BASIC/3000 Interpreter Pocket Guide (Part No. 03000-90050)

Summarizes the constructs of BASIC/3000.

SPL Reference Manual (Part No. 30000-90024)

Describes the constructs and use of the HP 3000 Systems Programming Language (SPL).

MPE Index

SPL Textbook (Part No. 30000-90025)

Describes the constructs and use of SPL in a tutorial manner. Designed for self study, each chapter concludes with an examination.

Cross Assembler for HP 2100 Computers Reference and Application Manual (Part No. 03000-90047)

Describes how to assemble HP 2100 Assembler Language programs on an HP 3000.

EDIT/3000 Reference Manual (part No. 03000-90012)

Describes the constructs and use of the HP 3000 Text Editor.

FCOPY Reference Manual (part No. 03000-90064)

Describes the constructs and use of the HP 3000 File Copier.

SORT/3000 Reference Manual (Part No. 32214-90001)

Describes the constructs and use of the HP 3000 Sort/Merge program.

HP 3000 Compiler Library Reference Manual (Part No. 30000-90028)

Describes what each input/output formatting, mathematical, and utility procedure in the HP 3000 Compiler Library does and how to call them.

HP 3000 Scientific Library Reference Manual (Part No. 30000-90027)

Describes what each mathematical, statistical, and utility procedure in the HP 3000 Scientific Library does and how to call them.

TRACE/3000 Reference Manual (Part No. 03000-90015)

Describes how to debug programs using the HP 3000 Symbol Trace program.

IMAGE Data Base Management Reference Manual (Part No. 32215-90003)

Describes how to create, maintain, and use an IMAGE data base.

QUERY Reference Manual (Part No. 30000-90042)

Describes how to access an IMAGE data base from an interactive terminal using the QUERY program.

2780/3780 Emulator Subsystem Reference Manual (Part No. 30000-90047)

Describes how to transfer data between an HP 3000 and a variety of remote processors in a full microprogramming environment over the public telephone (switched) network, or on a private leased line, using the HP 30130 2780/3780 Emulator subsystem. The Emulator makes the HP 3000 appear to the remote processor as either an IBM 2780 or IBM 3780 data transmission terminal.

Using the HP 3000: A guide for the Terminal User (Part No. 03000-90121)

An introduction to the use of the HP 3000. Covers terminal characteristics, initiating and terminating an interactive session, some MPE File System commands, the HP 3000 Text Editor, FORTRAN/3000, COBOL/3000, the BASIC/3000 Interpreter, and RPG/3000.

Data Entry Library for HP 2640/2644 Terminals Reference Manual (Part No. 30000-90050)

Describes how to perform the following using the HP 3000 Data Entry Library (DEL/3000):

Create forms interactively from an HP 2640/2644 terminal and store them in the system.

Display, modify, and delete forms interactively from an HP 2640/2644 terminal.

Call DEL/3000 procedures from within user programs to display the forms on a terminal and allow anyone running these user programs to enter data on the form images, edit the data, and store it in data files in the formats established by the user programs.

Student Information System Reference Manual (Part No. 32900-90001)

Describes how to implement an information system using the three SIS/3000 subsystems (Attendance Accounting, Mark Reporting, and Family Information Reporting).

Student Information System - Technical Manual (Part No. 32900-90005)

Describes the internal maintenance specifications for the HP-supplied SIS/3000 software. This manual is necessary only if your application requires that HP-supplied software be modified. Note that modified HP software is not covered by the warranty.

Student Assignment System Reference Manual (Part No. 32901-90001)

Describes how to implement a class scheduling system for educational institutions using the Student Assignment System (SAS/3000).

Student Assignment System - Technical Manual (Part No. 32901-90005)

Describes the internal specifications for the HP-supplied SAS/3000 software. This manual is necessary only if your application requires that HP-supplied software be modified. Note that modified HP software is not covered by the warranty.

General Information Manual (Part No. 30000-90008)

Introduces the major concepts of the HP 3000 Computer System and provides an introduction to the use of the system.

Instruction Decoding Pocket Guide (Part No. 30000-90057)

Contains Memory Reference, Status Register, Code Segment Table, Interrupts/Traps, 02 Moves/Immediates, 01 Shifts/Branches, 00 stack ops, and 03 I/O Linkage, Control.

Using Files: A Guide for New Users of HP 3000 Computer Systems (Part No. 30000-90102)

Shows the commands, subsystems, and utility programs that are used to manipulate files on HP 3000 Computer Systems. Defines basic file terminology and explains the concept of device-files, the general structure of files, and group and account file security.

APL/3000 Reference Manual (Part No. 32105-90002)

Describes the high-level programming language developed for use on the HP 3000 (MPE III) Computer System.

APL/3000 Pocket Guide (Part No. 32105-90003)

Summarizes the APL/3000 Language Specifications. Describes the various Operators, Functions, System Commands, System Variables, File System, Editor Instructions, APLGOL Statements and the APL/3000 Character Set.

Fortran Pocket Guide (Part No. 32102-90002)

Summarizes the various Statements, Format Rules, Designators, Data Types, Expressions, Compiler Commands, Intrinsic Functions, Basic External and Generic Functions, Files, MPE Commands, Trap Handling, and Unitcontrol Procedure.

HP 2894A Card Reader Punch Operating Manual (Part No. 30119-90009)

Provides operating and programming information for the HP 2894A Card Reader Punch. Describes the use of the card reader punch in local (off-line) mode for keypunching activities. Also describes the use of the device on-line in the MPE environment.

SPL Pocket Guide (Part No. 32100-90001)

Contains the Type Transfer Functions, Logical and Arithmetic Expressions, Declarations, Arrays, Statements, Parameters, Assemble, Instruction Mnemonics and Format Numbers, Stack Ops, Shifts/Branches, Moves/Immediates, I/O, Linkage, Control, Memory Reference, Status Register, MPE/3000 Commands, Compiler Commands, and Reserved Words/INDEX REG.

DS/3000 Reference Manual (Part No. 32190-90001)

Documents the HP Distributed Systems Network for the HP 3000 Computer System. Explains how an HP 3000 user can communicate with several HP 3000 computer systems by establishing a DS/3000 communications link.

Line Printer Operating and Programming Manual (Part No. 30209-90008)

Provides operating and programming information for the line printer subsystems available with the MPE 3000 Computer.

KSAM/3000 Reference Manual (Part No. 30000-90079)

Provides a method of accessing files indexed by keys and is called Keyed Sequential Access Method. It operates on the HP 3000 Computer System operating under MPE III.

MPE Index

HP 30032B Asynchronous Terminal Controller, Installation and Service Manual (Part No. 30032-90004)

This manual provides information about the HP 30032B Asynchronous Terminal Controller, including equipment, operating parameters, theory of operation, and maintenance procedures.

HP 30037A Asynchronous Repeater, Installation and Service Manual (Part No. 30037-90003)

This manual contains installation and service information about the HP 30037A Asynchronous Repeater, including modes of operation, installation and service techniques, and theory of operation.

HP 30055A Synchronous Single-Line Controller, Installation and Service Manual (Part No. 30055-90001)

This manual documents installation and service techniques for the HP 30055A Synchronous Single-Line Controller, including installation and service and programming information and examples.

HP 30055A Synchronous Single-Line Controller, Stand-Alone Diagnostics Manual (Part No. 30055-90008)

This manual documents how to run the special program D434 to verify the operation of a HP 30055A Synchronous Single-Line Controller.

Hardwired Serial Interface Installation and Service Manual (Part No. 30360-90001)

This manual explains how to install and service a HP 30360A Hardwired Serial Interface.

Hardwired Serial Interface Stand-Alone Diagnostic Manual (Part No. 30360-90007)

This manual documents how to run the HSI diagnostic, D434, to verify whether the interface is functioning properly.

DS/3000 Modem Link Site Preparation and Installation Manual (Part No. 32190-90003)

This manual is designed primarily for HP support personnel. It describes site preparation and installation of the equipment required to operate DS/3000 in a remote communications environment.

DS/3000 Hardwired Link Site Preparation and Installation Manual
(Part No. 32190-90004)

This manual is designed primarily for HP support personnel. It describes site preparation and installation of the equipment required to operate DS/3000 in a local environment.

MTS/3000 Site Preparation and Installation Manual (Part No. 32193-90002)

This manual describes how to plan for MTS/3000 installation and how to install the equipment required for MTS/3000 operation.

HP 30032B Terminal Data Interface Diagnostic Manual (Part No. 30032-90011)

This manual provides instructions for running the diagnostic program which determines whether or not the HP 30032B Terminal Data Interface equipment is operating properly.

MPE MANUALS MASTER INDEX

The following pages contain a master index of the topics discussed in the MPE manuals. The MPE manuals covered in the index, their part numbers, and the manual abbreviations (used in the index to conserve space) are as follows:

<u>TITLE</u>	<u>PART NO.</u>	<u>ABBREVIATION</u>
MPE Commands Reference Manual	(30000-90009)	CMND
MPE Intrinsic Reference Manual	(30000-90010)	INTR
MPE Segmenter Reference Manual	(30000-90011)	SEGM
MPE Debug/Stack Dump Reference Manual	(30000-90012)	DEBUG
MPE System Utilities Reference Manual	(30000-90044)	UTIL
HP 3000CX to HP 3000 Series II Program Conversion Guide	(30000-90046)	CONV
Console Operator's Guide	(30000-90013)	OPER
System Manager/System Supervisor Manual	(30000-90014)	SUPR

MPE Index

! (with user-defined command)	CMND 9-12
A	
A command	
definition	DEBUG 2-5
use	DEBUG 3-28
A prefix	
= command	DEBUG 2-27
D command	DEBUG 2-12
M command	DEBUG 2-20
Abort command	
example	CMND 2-9
text discussion	CMND 3-17
usage	CMND 2-9
Abort during break	CMND 3-16
Abort messages	CMND 10-35
Abort stack analysis	DEBUG 2-31, 4-1
ABORT?, text discussion	CMND 3-15
Aborting a process	INTR 4-20
Aborting a program	CMND 2-19, 3-17
	INTR 4-20
Aborting an operation	CMND 2-9
=ABORTIO command	OPER 1-7, 3-3
=ABORTJOB command	OPER 1-7, 3-5
Absolute code	
breakpoints in	DEBUG 2-6, 3-28
clear break in	DEBUG 2-9
display	DEBUG 2-11, 3-29
segment index (CST)	DEBUG
segment index (CST) display	DEBUG 2-13, 3-30
Absolute DB relative (DX)	
display base	DEBUG 2-11
modify base	DEBUG 2-19
Absolute modify	DEBUG 2-19, 3-29
Absolute relative (A)	
display base	DEBUG 2-11
modify base	DEBUG 2-19
=ACCEPT command	OPER 1-7, 3-7
ACCEPT intrinsic	INTR 2-4
Access mode	CMND 6-25, 6-27
Access, FILE command parameters	CMND 2-50
Access-Mode Abbreviations	UTIL 8-8
Access-mode options for files	INTR 3-89
Accessing APL subsystem	CMND 2-12
Accessing files	INTR 3-7, 3-15
Accessing files already in use	INTR 3-10
Account Librarian (AL)	
attribute	SUPR 3-2
creation	SUPR 5-8
Account limits	CMND 5-6, 5-7
Account Manager (AM)	SUPR 3-2
Account Manager (AM) definition and function	SUPR 3-2, 5-1, 5-2
Account name, at logon	CMND 3-5

Account name, in a JOB command	CMND 4-5
Account password, at logon	CMND 3-6
Account Reports	SUPR 5-9
Account segmented library	
break in	DEBUG 2-6, 23
clear break in	DEBUG 2-9
display location of	DEBUG 2-25
Accounting Information	SUPR 3-9, 5-9
Accounting information, displaying	CMND 2-100
Accounting Structure	SUPR 6-53
Accounts	
assigning CV and UV capabilities	SUPR 1-16
Attributes, altering	SUPR 5-4
creation and structure of	SUPR 5-4
definition of	SUPR 3-6, 3-8
level security	SUPR 3-11, 3-12
list of	SUPR 4-4
name of	SUPR 3-6
ACCOUNTS option	SUPR 6-66
ACCOUNTS option (RELOAD)	OPER 5-14
Accounts Purging	SUPR 4-8
Accounts Resetting	SUPR 4-7
Acquiring global RIN's	INTR 6-2
ACTIVATE errors	INTR 10-12
ACTIVATE intrinsic	INTR 2-4
specifications	INTR 2-5
usage	INTR 8-10
Activating an extra data segment	INTR 8-10
Activating processes	INTR 7-3
ACTIVE file state	CMND 3-19, 4-16, 4-17, 4-18
Actual file designator	CMND 6-7
	INTR 3-7
Adding new private volume discs	OPER 4-19
Adding new system disc	OPER 4-19
Adding standard I/O devices	OPER 5-20
Address in expression	DEBUG 2-2
Addressing	
array	DEBUG 3-13
byte	DEBUG 3-13
common	DEBUG 3-14
indirect	DEBUG 2-2, 2-12, 2-19, 3-12
ADDRL segmenter command	SEGM 1-5, 2-4
	SEGM 1-5, 2-5
ADJUSTUSL intrinsic	SEGM 1-5, 2-6, 2-7
ADJUSTUSLF intrinsic	INTR 2-7
AL attribute	SUPR 3-2
ALLOCATE	SUPR 2-3, 6-108
Allocating a terminal	INTR 5-24
Allocating drives to domain	OPER 4-19
Allocating programs and procedures	SUPR 6-108
Allocation of devices	INTR 3-24
ALTACCT	SUPR 2-4, 4-5
ALTDSEG intrinsic	
specifications	INTR 2-9
usage	INTR 8-15



MPE Index

ALTER Function	UTIL 11-5,11-6
ALTFILE command	OPER 1-7, 3-8
ALTJOB command	OPER 1-7, 3-9
ALTSEC command	
example	CMND 2-11
parameters	CMND 2-10
text discussion	CMND 6-70
usage	CMND 2-11
ALTUSER	SUPR 2-11, 5-4
ALTVSET	SUPR 2-14
AM attribute	SUPR 3-2
aoptions	
bit summary	INTR 2-51
description	INTR 2-61
APL command, example	CMND 2-12
APL command, usage	CMND 2-12
Arithmetic traps	INTR 4-30
ARITRAP intrinsic	
specifications	INTR 2-11
usage	INTR 4-30
Array addressing	DEBUG 3-13
AS subqueue	INTR 9-7
	SUPR 6-79
	CONV 3-7
ASCII Files	
ASCII mode	
display	DEBUG 2-11
expression result	DEBUG 2-27
modify	DEBUG 2-19
ASCII parameter	DEBUG 2-34
ASSEMBLE Statements	CONV 3-4
ATTACHIO Procedure	CONV 2-6
ATTIO Procedure	CONV 2-6
Attribute (AL)	SUPR 3-2, 5-8
Attribute (OP)	SUPR 3-2
Attributes	UTIL 8-1
Account Manager (AM)	SUPR 3-2
Batch Access (BA)	SUPR 3-5
Capability Class	SUPR 3-3
Diagnostician (DI)	SUPR 3-3
Ex (DS)	SUPR 3-4
File Access	SUPR 3-3
Grcup Librarian (GL)	SUPR 3-3, 5-8
Interactive Access (IA)	SUPR 3-5
Local	SUPR 3-5
Multiple RINS (MR)	SUPR 3-4
Non- (ND)	SUPR 3-3
Permanent Files (SF)	SUPR 3-3
Private disc volumes (UV)	SUPR 3-3
Privilege Mode (PM)	SUPR 3-4
Process-handling (PH)	SUPR 3-5
Program	SUPR 3-3
System Manager (SM)	SUPR 3-1
User	SUPR 3-1
	INTR 4-10
AUXSL segmenter command	SEGM 1-5,2-8

Available file table	INTR 3-14
Avoiding deadlocks	INTR 7-13
B	
B command	
definition	DEBUG 2-6
use	DEBUG 2-6
use in privileged mode	DEBUG 3-28
Back referencing files	CMND 6-15
	INTR 3-8
Backing up disc files	SUPR 5-9, 6-50, 6-97
Bank number absolute (EA)	
display	DEBUG 2-13, 3-30
extended absolute address base	DEBUG 2-11, 3-29
BASIC	CONV 3-7
BASIC command	
example	CMND 2-14
parameters	CMND 2-13
text discussion	CMND 7-13
usage	CMND 2-13
BASIC compiler	CMND 7-15
BASIC Files	CONV 3-7
BASIC Interpreter	CMND 7-15
	CONV 3-7
BASIC programs	
compiling	CMND 2-15, 2-16
executing	CMND 2-15
interpreting	CMND 2-13
preparing	CMND 2-15, 2-18
BASICGO command	
example	CMND 2-15
parameters	CMND 2-15
text discussion	CMND 7-8
usage	CMND 2-15
BASICOMP command	
example	CMND 2-17
parameters	CMND 2-16
text discussion	CMND 7-4, 7-15
usage	CMND 2-16
BASICPREP command	
example	CMND 2-19
parameters	CMND 2-18
text discussion	CMND 7-6
usage	CMND 2-18
Batch Access (BA) attribute	SUPR 3-5
Batch job	
initiation	CMND 2-70
spooling	CMND 2-160
submitting	CMND 4-1
using SETDUMP in	DEBUG 4-6
Batch processing	OPER 1-1
BATTERY STATUS	OPER 2-2
BCONVERT Conversion Program	CONV 3-8

MPE Index

BCONVERT Error Messages	CONV 3-9
Binary File I/O	CONV 3-3
BINARY intrinsic	
specifications	INTR 2-14
usage	INTR 4-13
Bit field extract	DEBUG 2-2
Block factor	CMND 6-22
	INTR 2-65, 3-3
Block mode	CMND 3-28
Block size	INTR 3-4
Block transfers	INTR 5-22
Blocks	INTR 3-2
Bounds check	INTR 1-11
Break function, system and subsystem	CMND 3-23
BREAK key	
for interrupting commands	CMND 3-13
for suppressing messages	CMND 3-13
for suspending program execution	CMND 3-16
BREAKJOB command	OPER 1-7,3-11
Breakpoint	
clear	DEBUG 2-9, 3-8
conditional	DEBUG 2-6, 3-7
definition	DEBUG 3-6
display	DEBUG 2-7, 3-7
establish	DEBUG 2-6, 3-6
establish in privileged mode	DEBUG 3-28
permanent	DEBUG 2-6, 3-7
private	DEBUG 2-5, 3-28
repeated	DEBUG 2-7, 3-7
system global	DEBUG 2-5, 3-28
Breakpoint Table, size of	SUPR 3-5
BS subqueue	INTR 9-7
	SUPR 6-105
Buffering	INTR 3-6
Buffers, text discussion	CMND 6-23
BUILD Command	CONV 2-5
example	CMND 2-22
for new file on a private volume	CMND 6-4
parameters	CMND 2-20
text discussion	CMND 6-3, 6-49
usage	CMND 2-22
BUILDRL segmenter command	SEGM 1-5,2-9
BUILDSDL segmenter command	SEGM 1-5,2-10
BYE command	
example	CMND 2-23
text discussion	CMND 3-11
usage	CMND 2-23
Byte addressing	DEBUG 3-13
C	
C command	
definition	DEBUG 2-9
use	DEBUG 3-8

Calculating disc space	INTR 3-2
CALENDAR	CONV 2-2
Calendar date	INTR 4-44
CALENDAR intrinsic	
specifications	INTR 2-15
usage	INTR 4-44
Calling intrinsics from other languages	INTR 1-10
Calling intrinsics from SPL	INTR 1-2
Capability sets	SUPR 3-1
Capability-Class Attributes	SUPR 3-3
Capability-Set Abbreviations	UTIL 8-8
Card reader	INTR 5-3
	OPER 5-3
Carriage control	CMND 6-28
byte	INTR 2-70
characters	INTR 5-1
codes	INTR 5-7
directives	INTR 2-89, 5-7
summary	INTR 2-90
Carriage-return characters	INTR 5-2
CATALOG	SUPR G-1
CAUSEBREAK intrinsic	
specifications	INTR 2-16
usage	INTR 4-19
CEASE segmenter command	SEGM 1-5, 2-12
Central processor run-time	INTR 4-44
Changing DL to DB area size	INTR 4-22
Changing forms on a line printer	OPER 5-17
Changing input echo facility	INTR 5-11
Changing size of an extra data segment	INTR 8-15
Changing terminal characters	INTR 5-10
Changing Z to DB area size	INTR 4-27
Channel number	
definition	SUPR 6-5
specifying for a device	SUPR 6-20, 6-68
CHANNEL Prompt	CONV 2-6
Character mode	CMND 3-28
CHECKDEV	CONV 2-2
CHRONOS	CONV 2-2
CICAT program	SUPR G-2
CIERR messages	CMND 10-2
CIR Contents	UTIL 3-2
Circular subqueue	SUPR 6-106, 6-107
	INTR 9-5
CIWARN messages	CMND 10-2
Classification of devices	INTR 3-23
Classname, device	CMND 6-20
CLOCK	CONV 2-2
CLOCK intrinsic	
specifications	INTR 2-17
usage	INTR 4-44
Closing a new file as a permanent file	INTR 3-39
Closing a new file as a temporary file	INTR 3-37
Closing files	INTR 3-36
Closing magnetic tape files	INTR 3-71

MPE Index

COBOL command	
compiling	CMND 2-24
example	CMND 2-25
parameters	CMND 2-24
text discussion	CMND 7-4
usage	CMND 2-25
COBOL programs	
compiling	CMND 2-26, 2-28
executing	CMND 2-26
preparing	CMND 2-26, 2-28
COBOLGO command	
example	CMND 2-27
parameters	CMND 2-26
text discussion	CMND 7-8
usage	CMND 2-26
COBOLPREP command	
example	CMND 2-29
parameters	CMND 2-28
text discussion	CMND 7-6
usage	CMND 2-29
Code segment relative (CO)	
display base	DEBUG 2-11, 3-29, 31
freeze	DEBUG 2-17, 3-30
unfreeze	DEBUG 2-16, 3-30
Code Segment Table (CST)	SUPR 6-10
changing size of	SUPR 6-10, 6-35, 6-44
definition of	SUPR 6-108
format	SUPR 6-109
Code Segments	CONV 2-3
changes to limits	INTR 8-1
changing maximum size of	SUPR 6-13, 6-43
Cold Dump procedure	SUPR 6-10, 6-35, 6-44
Cold load error messages	OPER 5-27
Cold load halts	OPER A-1 - A-8
Cold Loading SADUTIL	SUPR 6-92, 6-94
Cold-Load Procedure	OPER A-1
COLDSTART	UTIL 1-6
Collecting mail	CONV 2-6
Colon	OPER 4-15, 5-8
COMMAND intrinsic	SUPR 6-54, 6-65
specifications	INTR 7-12
usage	SEGM 2-1
Command	
ADDRL	INTR 2-18
ADDSL	INTR 4-9
AUXUSL	SEGM 1-5, 2-4
BUILDRL	SEGM 1-5, 2-5
BUILDSL	SEGM 1-5, 2-8
BUILDSL	SEGM 1-5, 2-9
BUILDSL	SEGM 1-5, 2-10
BUILDSL	SEGM 1-5, 2-11
BUILDSL	SEGM 1-5, 2-12
CEASE	SEGM 1-5, 2-13
Copy	SUPR 2-1
definitions of	

Elements	SUPR 1-1
correcting entry of	CMND 2-92
errors	CMND 1-4
Errors	SUPR 1-4
execution at logon	CMND 1-5
execution from a program	CMND 1-5
EXIT	SEGM 1-5,2-14
HIDE	SEGM 1-5,2-17
How to enter	SUPR 1-1
	CMND 1-2
identifier, in job input	CMND 4-13
identifier, in STREAM command	CMND 4-13, 4-15
interpreter messages	CMND 10-2
interrupting execution of	CMND 3-15
LISTRL	SEGM 1-5,2-20
LISTSL	SEGM 1-5,2-21
LISTUSL	SEGM 1-5,2-22
logon, APL command	CMND 3-12
logon, example	CMND 2-8
logon, parameters	CMND 2-5
logon, usage	CMND 2-7
name	SUPR 1-3, 1-4
NEWSEG	SEGM 1-5,2-23
parameters, formatting	INTR 4-44
parameter list	CMND 1-2
PREPARE	SEGM 1-5,2-24,2-25
PURGERBM	SEGM 1-5,2-26
PURGERL	SEGM 1-5,2-27
PURGESL	SEGM 1-5,2-28
REVEAL	SEGM 1-5,2-29
RL	SEGM 1-5,2-30
sequence numbers	CMND 1-5
SL	SEGM 1-5,2-32
stream	CMND 4-1
USE	SEGM 1-5,2-33
user-defined	CMND 9-11
user-defined, nested	CMND 9-21
USL	SEGM 1-5,2-34
Commands	
:ALLOCATE	SUPR 2-3, 6-108
:ALTACCT	SUPR 2-4, 4-5
:ALTGROUP	SUPR 2-7, 5-2
:ALTUSER	SUPR 2-11, 5-4
:ALTVSET	SUPR 2-14, 4-12, 1-5
:DEALLOCATE	SUPR 2-16, 6-108
:DISMOUNT	SUPR 1-25
:DSTAT	SUPR 1-27
:JOBPRI	SUPR 2-17
:LISTACCT	SUPR 2-18, 4-4
:LISTGROUP	SUPR 2-20, 4-4
:LISTUSER	SUPR 2-22, 4-4
:LISTVS	SUPR 1-26
:MOUNT	SUPR 1-24
:NEWACCT	SUPR 2-24, 5-4
:NEWGROUP	SUPR 2-28, 5-3

MPE Index

:NEWUSER	SUPR 2-31, 5-4
:NEWVSET	SUPR 2-34, 4-11, 1-4
:PURGEACCT	SUPR 2-36, 4-8
:PURGEGROUP	SUPR 2-38, 5-7
:PURGEUSER	SUPR 2-40, 5-8
:PURGEVSET	SUPR 2-41, 4-12, 1-6
:QUANTUM	SUPR 2-42, 6-107
:REPORT	SUPR 2-44, 4-6
:RESETACCT	SUPR 2-46, 4-7
:RESTORE	SUPR 2-47, 6-102
:RESUMELOG	SUPR 2-51, 6-114
:SEGMENTER	SEGM 1-5, 2-31
:SHOWLOG	SUPR 2-52, 6-114
:SHOWQ	SUPR 2-53, D-10
:STORE	SUPR 2-55, 4-7, 6-98
:SWITCHLOG	SUPR 2-58, 6-114
:SYSDUMP	SUPR 2-59, 6-97
:VSUSER	SUPR 1-26
=ABORTIO	OPER 3-3
=ABORTJOB	OPER 3-5
=ACCEPT	OPER 3-7
=ALTFILE	OPER 3-8
=ALTJOB	OPER 3-9
=BREAKJOB	OPER 3-11
=DELETE	OPER 3-12
=DISMOUNT	OPER 3-13
=DOWN	OPER 3-14
=DSLIN	OPER 3-15
=DSTAT	OPER 3-18
=GIVE	OPER 3-20
=HEADOFF	OPER 3-21
=HEADON	OPER 3-22
=JOBFENCE	OPER 3-23
=LIMIT	OPER 3-24
=LOGOFF	OPER 3-25
=LOGON	OPER 3-26
=MOUNT	OPER 3-27
=MPLINE	OPER 3-29
=MRJE	OPER 3-31
=OUTFENCE	OPER 3-33
=RECALL	OPER 3-34
=REFUSE	OPER 3-35
=REPLY	OPER 3-36
=RESUMEJOB	OPER 3-38
=SESSION	OPER 3-39
=SHOWDEV	OPER 3-40
=SHOWIN	OPER 3-42
=SHOWJOB	OPER 3-45
=SHOWOUT	OPER 3-48
=SHOWQ	OPER 3-51
=SHOWTIME	OPER 3-53
=SHUTDOWN	OPER 3-54
=SPOOL	OPER 3-55
=STREAMS	OPER 3-62
=TAKE	OPER 3-63

=TELL	OPER 3-64
=UP	OPER 3-66
=VMOUNT	OPER 3-67
=VSUSER	OPER 3-69
=WARN	OPER 3-70
=WELCOME	OPER 3-71
breakable	CMND 3-14
DEBUG	DEBUG 2-2
functional list	CMND 2-2
MPE	DEBUG 2-2
MPE	SEGM 1-5,2-1,2-31
non-breakable	CMND 3-14
privileged mode summary	DEBUG 3-27
program	CMND 3-14
Segmenter	SEGM 1-5,2-2
Segmenter	SEGM 2-4- 2-34
specification	DEBUG 2-1
summary	DEBUG 2-4
COMMENT command	
example	CMND 2-30
text discussion	CMND 4-15
usage	CMND 2-30
Commercial instruction traps	INTR 4-31
Common addressing	DEBUG 3-14
COMMON Statement	CONV 3-2
Communication	
inter-process	INTR 4-44, 7-10
process-to-process	INTR 7-2
COMPACT option	SUPR 6-65
COMPACT option (RELOAD)	OPER 5-14
Compiling BASIC programs	CMND 2-16, 2-18
Compiling COBOL programs	CMND 2-26
COND command VINIT	SUPR 3-1
COND Function	UTIL 1-11
Condense disc facility	SUPR J-1
Condition codes	
definitions	INTR 1-10
file system	INTR 3-10
CONF Function	UTIL 1-13
Configuration of system devices	OPER 5-20, 5-21.
Configuration of system devices	OPER F-1, F-2
Configurator/Initiator Changes	CONV 2-4
Configurator/User dialogue	SUPR 6-16, 6-49, B-1
Console command summary	OPER 1-6
Console commands	OPER 1-5, 1-7, 3-1, 3-2
Console messages	OPER 6-1
Console Operator	INTR 4-18
commands, private volumes	SUPR 6-16, 6-49, B-1
tasks	OPER 1-4,5-1,
Console Output	
Echoing	OPER 1-6
Non-echoing	OPER 1-6
Continuation character	CMND 1-4
	SUPR 1-4
CONTINUE command, example	CMND 2-31

MPE Index

text discussion	CMND 4-19
usage	CMND 2-31
Control characters	CMND 3-26
Control characters, carriage	CMND 6-28
Control Panel	OPER 2-2
Control-Y traps	INTR 4-38
Controlling Processes	SUPR 6-105
Conversion Summary	CONV 3-1
Converting characters from ASCII to EBCDIC	INTR 4-13
Converting characters from EBCDIC to ASCII	INTR 4-13
Converting numbers	
from ASCII to binary	INTR 4-13
from ASCII to EBCDIC	INTR 4-13
from binary to ASCII	INTR 4-10
from EBCDIC to ASCII	INTR 4-13
Converting private volumes disc to system disc	OPER 4-20
Converting system disc to private volume disc	OPER 4-20
COOLSTART	OPER 4-15, 5-7
Coolstart	SUPR 6-54, 6-64
COPY command, VINIT	SUPR 1-10
COPY segmenter command	SEGM 1-5, 2-13
Corresponding Output device	SUPR 6-7
CPU register test	OPER C-1, C-4
CPU RESET switch	OPER 2-1
CPU time limits	CMND 5-6, 5-7
CREATE errors	INTR 10-12
CREATE intrinsic	
specifications	INTR 2-19
usage	INTR 7-3
Creating an extra data segment	INTR 8-2
Creating files on a private volume	CMND 6-3
Creating processes	INTR 7-3
CRT terminal	OPER 1-5
CS capability	SUPR 2-4, 2-25
CS subqueue	INTR 9-7
changing priority of	SUPR 6-43
definition of	SUPR 6-79
CS/3000 Intrinsic (system failures)	OPER B-14
CST register display	DEBUG 2-13, 2-25, 3-30
CTranslate intrinsic	
specifications	INTR 2-24
usage	INTR 4-13
CURRENT INSTRUCTION REGISTER	OPER 2-2, 5-32
Current time	INTR 4-44
CV (create volume) capability	SUPR 2-4, 2-25, 2-31
	CMND 6-2
CV (create volume) capability assign to account	SUPR 1-16
D	
D command	
definition	DEBUG 2-11
use	DEBUG 3-11, 3-18
use in privileged mode	DEBUG 3-29

DASCII intrinsic	
specifications	INTR 2-26
usage	INTR 4-13
DATA command	
example	CMND 2-33
parameters	CMND 2-32
text discussion	CMND 3-18, 6-71, 8-5
usage	CMND 2-32
Data Communications	SUPR 6-14
Data from a device option (A)	
definition of	SUPR 6-6
specifying	SUPR 6-72, B-1-B-10
Data information	INTR 4-42
Data Mis-Alignment	
COMMON OR EQUIVALENCE Statements	CONV 3-2
Resulting from Intrinsic Calls	CONV 3-3
Through Binary File I/O	CONV 3-3
Data segment index, extra (DST), display	DEBUG 2-13, 3-30
Data segment relative (DA)	
display base	DEBUG 2-11, 3-29, 31
freeze	DEBUG 2-17, 3-30
modify	DEBUG 2-19, 3-29
unfreeze	DEBUG 2-26, 3-30
Data Segment Table (DST)	SUPR 6-10, 6-35, 6-44
Data segments	INTR 8-1
changes to limits	SUPR 6-13, 6-44
changing maximum size of	SUPR 6-44
changing the size	INTR 8-15
deleting	INTR 8-15
table (DST)	SUPR 6-10
transferring to and from	INTR 8-15
Data stack	DEBUG
Data stack finding value in	DEBUG 3-11 thru 3-15
Data	
delimiting	CMND 3-18
reading from a session	CMND 3-18
reading from standard input device	CMND 4-10
spooling	CMND 2-160
submitting from magnetic tape	CMND 6-23
how to display	CMND 2-148
	CMND 9-10
	INTR 2-28
DATELINE intrinsic	
DB	
absolute address	DEBUG 2-11, 19
parameter	DEBUG 2-34
pointer	INTR 9-5
register display absolute value of	DEBUG 2-13
relative addressing	CONV 2-6
	DEBUG 3-12
DBINARY intrinsic	
specifications	INTR 2-29
usage	INTR 4-13
DDIV Instruction	CONV 3-6
Deadlocks	INTR 7-13
DEALLOCATE	SUPR 2-16, 6-108

MPE Index

DEBUG command, usage	CMND 2-34
DEBUG facility	CONV 2-6
capabilities	DEBUG 1-1
command specifications	DEBUG 2-2
command summary	DEBUG 2-4
execution with	DEBUG 3-5
function	UTIL 11-7
intrinsic	INTR 2-30
intrinsic definition	DEBUG 2-29
intrinsic use	DEBUG 3-21
invoking	CMND 2-34
preparing to use	DEBUG 3-1
privileged mode capability	DEBUG 3-26
standard capability	DEBUG 3-5
Decimal mode	
display	DEBUG 2-11
expression result	DEBUG 2-27
modify	DEBUG 2-19
Decimal value in expression	DEBUG 2-2
Declaring access-mode options for files	INTR 3-89
DECOMP program	
example	DEBUG A-1
use	DEBUG 3-1
Defective disc track table	OPER E-1
Defective Track Table	SUPR 6-81
	UTIL 1-17
DEFERRED state	CMND 5-1
Defining line-term. charac. for terminal input	INTR 5-20
=DELETE command	OPER 1-7, 3-12
Deleting	
a character	OPER 1-5
a line	OPER 1-5
an extra data segment	INTR 8-15
I/O devices	OPER 5-21
processes	INTR 7-8
Delimiters, parameter	CMND 1-2
Designators, file	CMND 6-6, 6-7
Determining father process	INTR 7-14
Determining interactive and dup. file pairs	INTR 3-90
Determining process priority and state	INTR 7-15
Determining son processes	INTR 7-15
Determining source of process activation	INTR 7-14
Device	
access	INTR 3-4
allocation	CMND 8-5
	INTR 3-24
characteristics	INTR 5-1
Classes	
definition of	SUPR 6-7
specifying	SUPR 6-29, 6-74
classname	CMND 6-20
files	CMND 6-20
ownership	CMND 2-133,8-1
ownership, SHOWDEV command	CMND 5-6
recognition	OPER 4-1

Reference Table (DRT)	SUPR 6-4, 6-19
states, how to display	CMND 8-1
status	CMND 2-132
sub-type	
specifying for	SUPR 6-20, 6-69,
	SUPR A-1-A-3
	SUPR B-1-B-10
type, specifying for	SUPR 6-20, 6-69
	SUPR A-1-A-3
	SUPR B-1-B-10
spooled input	CMND 8-6
spooled output	CMND 8-12
Device-dependent restrictions on files	INTR 3-22
Devicefile management	OPER 4-2,4-3
Devicefileid	CMND 8-4
Devicefiles	
Data	OPER 4-4
definition	OPER 4-3
displaying information for	CMND 8-8, 8-12
displaying status of	CMND 5-6
Input	OPER 4-4
input, how to access	CMND 8-5
Job/Session input	OPER 4-4
Job/Session list	OPER 4-6
Operator involvement with input	OPER 4-4
Operator involvement with output	OPER 4-6
Operator-assigned	OPER 4-5
Output	OPER 4-6
output, how to access	CMND 8-11
spooled	CMND 6-21
text discussion	CMND 8-4
Devices	INTR 3-6
Devices and devicefiles, text discussion	CMND 8-1
Devices, classification of	INTR 3-23
Diagnostician Attribute (DI)	SUPR 3-3
Direct-access file reading	INTR 3-48, 3-50
Directory Block Size,changing on a USL file	SEGM 3-23
Directory, changing size of	SUPR 6-41
Disabling traps	INTR 4-29
Disc	
adding volumes	SUPR 6-42, 6-81
allocation, changing	SUPR 6-2, 6-41, 6-81
condense facility	SUPR J-1
deleting volumes	SUPR 6-42, 6-81
domains	OPER 4-16, 4-17
	SUPR 4-9
drive status	CMND 2-38
drives, how to display status of	CMND 8-15
file security, how to suspend and restore	CMND 6-71
file, how to copy	CMND 6-59
files, modifying and listing	UTIL 6-1
files, recreating	UTIL 2-1
files, retrieving and copying	UTIL 1-25
files, text discussion	CMND 6-30
fixed-head	SUPR 6-56

MPE Index

listing volumes	SUPR 6-41, 6-42
listing volumes	SUPR 6-80, 6-81
moving-head	SUPR 6-56
organization	SUPR 6-56
pack formatting	SUPR H-1
Private Volumes	SUPR 4-9
removable	SUPR 4-9
sector	DEBUG
sector display	DEBUG 2-15, 3-29
space	INTR 3-2
space utilized by system	SUPR E-1
volume conditioning	OPER 4-22
volume labels	SUPR F-4
volumes	CMND 6-61
volumes, text discussion	CMND 6-1
DISKED2	UTIL 6-1- 6-3
DISKED2 Error Messages	UTIL 6-3
DISMOUNT command	OPER 1-7, 3-13
parameters	SUPR 1-25
text discussion	CMND 2-35
usage	CMND 6-5
Dismounting disc packs	CMND 2-35
Dismounting volume sets	OPER 4-20
Display	CMND 6-4
base	DEBUG 2-11, 3-30
code	DEBUG 2-11, 3-18
privileged mode	DEBUG 2-11, 3-29
register	DEBUG 2-13, 3-16
stack marker	DEBUG 2-25, 3-20
value	DEBUG 2-11, 3-12
Displaying Accounting information	
Account Manager	SUPR 5-9
System Manager	SUPR 4-5
DL register	
assign value	DEBUG 2-28, 3-17
display	DEBUG 2-14
modify	DEBUG 2-21, 3-16
DLSIZE intrinsic	
specifications	INTR 2-31
usage	INTR 8-15
DMOVOUT intrinsic	
specifications	INTR 2-35
usage	INTR 8-15
DMUL Instruction	CONV 3-6
Domains, disc	SUPR 4-9
Domains, file	INTR 3-6
DONE state	CMND 5-1
=DOWN command	OPER 1-7, 3-13
DPAN2	UTIL 3-1- 3-3
DR command	
definition	DEBUG 2-13
use	DEBUG 3-16
use in privileged mode	DEBUG 3-30
Driver configuration	OPER E-1 - E-10

Driver Names	
definition of	SUPR 6-7
specifying	SUPR 6-28, 6-78
	SUPR A-1-A-3
	SUPR B-1-B-10
DRT entry number	
specifying for a device	SUPR 6-19, 6-68
specifying highest allowed	SUPR 6-19, 6-68
DS attribute	SUPR 3-4
DS subqueue	INTR 9-7
changing priority of	SUPR 6-43
definition of	SUPR 6-107
DS/3000	SUPR 6-14
DS/3000 (System failures)	OPER B-14
DS/3000 subsystem, closing a line	CMND 2-36
DS/3000 subsystem, opening a line	CMND 2-36
DS/3000 subsystem, remote hello	CMND 2-97
DSERR messages	CMND 10-41
DSLIME command	OPER 1-7, 3-15
example	CMND 2-37
parameters	CMND 2-36
DST register display	DEBUG 2-13, 3-30
DSTAT command	OPER 1-7, 3-18
	SUPR 1-27
	SUPR 1-28
example	CMND 2-38
parameters	CMND 2-38
text discussion	CMND 8-15
usage	CMND 2-38
VINIT	SUPR 1-15
DTRACK command, VINIT	SUPR 1-15
Dump procedure	OPER 5-27
Dump stack	DEBUG 2-35, 4-8
Dumping Files offline	SUPR 6-98
Duplex mode	INTR 5-11
Duplicative file pairs	INTR 3-90
Duplicative option (D)	
definition of	SUPR 6-6
specifying	SUPR 6-27, 6-73
	SUPR B-1-B-10
DV command	
definition	DEBUG 2-15
use	DEBUG 3-29
DX register display	DEBUG 2-13, 3-30
Dynamic load and unload of library procedures	INTR 4-2
E	
E command	
definition	DEBUG 2-16
use	DEBUG 3-9
EA register display	DEBUG 2-13, 3-30
Echo facility, text discussion	CMND 3-23, 3-24
Echo, off at logon	CMND 3-6

MPE Index

EDIT Function	UTIL 1-15
Editing commands	CMND 2-92
EDITOR command	
example	CMND 2-40
parameters	CMND 2-39
usage	CMND 2-39
Editor subsystem, using	CMND 3-3
ELSE command	
example	CMND 2-41
text discussion	CMND 4-21
usage	CMND 2-41
Emulator, 2780/3780	SUPR 6-15
Enable and disable	
binary transfers	INTR 5-21
line deletion echo suppress	INTR 5-23
parity checking	INTR 5-14
subsystem break function	INTR 5-14
system break function	INTR 5-14
tape-mode option	INTR 5-15
terminal input timer	INTR 5-16
user block transfers	INTR 5-22
ENABLE switch	OPER 2-2
Enabling traps	INTR 4-29
End-of-data	CMND 2-43
End-of-data, delimiting in a session	CMND 3-18
End-of-file	CMND 2-44
Checking	CONV 2-3
indication	INTR 5-6
indicators	CMND 6-74
marks on magnetic tape	INTR 3-70
End-of-job	CMND 2-45
ENDIF command, example	CMND 2-42
ENDIF command, text discussion	CMND 4-21
ENDIF command, usage	CMND 2-42
Entering non-privileged mode	INTR 9-5
Entering privileged mode	INTR 9-3
Entry Points	
activating	SEGM 3-8
deactivating	SEGM 3-10
deleting from a RL	SEGM 3-13,3-15,3-16
deleting from a SL	SEGM 3-19
EOD command	
example	CMND 2-43
text discussion	CMND 3-18, 4-10
usage	CMND 2-43
with a source program	CMND 3-19, 4-10
EOF command	
example	CMND 2-44
text discussion	CMND 3-20
usage	CMND 2-44
EOF Mark	UTIL 1-26
EOJ command	
example	CMND 2-45
text discussion	CMND 4-4, 4-10
usage	CMND 2-45

EQUIVALENCE Statement	CONV 3-2
Error analysis	OPER B-3
Error codes	OPER 6-21
Error handling	
during a session	CMND 3-21
during job entry	CMND 4-9
in a batch job	CMND 4-9, 4-18
in a session	CMND 3-21
Error messages	DEBUG 5-1
command interpreter	CMND 10-2
file system	CMND 10-36
help subsystem	CMND 10-49
loader	CMND 10-43
private volumes	CMND 10-46
RESTORE command	CMND 6-68
run-time (abort)	CMND 10-35
serial disc	CMND 10-50
STORE command	CMND 6-66
Segmenter	SEGM 4-1- 4-5
Error-check procedure	INTR 3-44
Errors	
ACTIVATE errors	INTR 10-11
command	CMND 1-4
condition code	INTR 1-10, 3-10
CREATE errors	INTR 10-11
file information display	INTR 10-14
in user-defined commands	CMND 9-23
intrinsic errors	INTR 10-6
loader errors	INTR 10-9
LOCKGLORIN errors	INTR 10-12
MYCOMMAND errors	INTR 10-12
obtaining file error information	INTR 3-67
program errors	INTR 10-5
recovery from	SUPR 6-56
run-time errors	INTR 10-7
SUSPEND errors	INTR 10-12
system messages	INTR 10-13
user messages	INTR 10-12
writing an error-check procedure	INTR 3-44
ES subqueue	INTR 9-7
	SUPR 6-107
ESPANDUSLF intrinsic	INTR 2-37
Exclusive access, file	CMND 6-37
EXEC state, jobs and sessions	CMND 5-1
Executing a compiled program	CMND 2-85
Executing a prepared program	CMND 2-118
Executing MPE commands programmatically	INTR 4-9
Execution priority	CMND 3-8, 4-7
EXIT Function	UTIL 11-9
EXIT segmenter command	SEGM 1-5, 2-14
EXPANDUSLF intrinsic	SEGM 1-5, 2-15, 2-16
Explicit Addressing	CONV 3-4
Expressions	
calculation of	DEBUG 2-27, 3-17
use in DEBUG commands	DEBUG 2-2

MPE Index

Extended absolute relative (EA)	
display base	DEBUG 2-11, 3-29
modify base	DEBUG 2-19
Extended precision floating-point traps	INTR 4-31
Extents	INTR 3-2
	CMND 6-32, 6-33
Extra bit field in expression	DEBUG 2-2
Extra data segment	INTR 8-2
Extra Data Segment (DS) Attribute	SUPR 3-3
Extra data segment index (DST) display	DEBUG 2-13, 3-30
F	
F command	
definition	DEBUG 2-17
use	DEBUG 3-30
FATHER intrinsic	INTR 2-39
specifications	INTR 2-39
usage	INTR 7-14
Father process	INTR 7-3
FCARD intrinsic	
specifications	INTR 2-40
usage	INTR 3-67
FCLOSE intrinsic	
specifications	INTR 2-49
usage	INTR 3-77, 5-1
FCLOSE with magnetic tape files	INTR 3-71
FCONTROL intrinsic	
options	CONV 2-5
specifications	INTR 2-52
usage	INTR 3-77, 5-1
FERRMSG intrinsic	INTR 2-56
FGETINFO intrinsic	
specifications	INTR 2-57
usage	INTR 3-65
Field, sequence	CMND 4-4
canceling	CONV 2-5
example	CMND 2-103
how to cancel	CMND 2-52
implicit, for subsystems	CMND 6-48
implied	CMND 7-20
lockout	CMND 6-48
parameters	CMND 6-11
relationship to FOPEN	CMND 2-46
summary of execution rules	CMND 6-39
text discussion	CMND 6-10
usage	CMND 6-6
usage	CMND 2-52
File-device relationships	INTR 3-6
Files	
\$NEWPASS	INTR 3-8
\$NULL	INTR 3-8
\$OLDPASS	INTR 3-9
\$OLDPASS opening	INTR 3-25

\$STDIN	INTR 3-21
\$STDINX	INTR 3-8
\$STLIST	INTR 3-8
access attributes	SUPR 3-3
access information	INTR 3-65
access parameters	CMND 2-50
access sharing restrictions	CMND 6-35
accessing	INTR 3-7,3-15
actual designator	CMND 6-7
altering security on	CMND 2-10
and system back-up operation	OPER 5-22
arbitrary formal designator	CMND 6-8
attributes, how to specify	CMND 2-46
back referencing	INTR 3-8
back referencing	CMND 6-15
back-up of	SUPR 6-50, 6-97
block factor	INTR 3-3
block size	INTR 3-4
blocks	INTR 3-2
buffered	INTR 2-63
buffering	CMND 6-23
characteristics	INTR 3-2
closing	INTR 3-35
condition codes	INTR 3-10
codes	CMND 2-21
control	INTR 3-88
creating	CMND 2-20
creating on a private volume	CMND 6-3
declaring access-mode options	INTR 3-89
deleting	CMND 2-90
designator, generic name	CMND 6-16
designator summary	CMND 6-10
designator, system-defined	CMND 6-15
designator, user-defined	CMND 6-11
designators	INTR 3-7
device	CMND 6-20
device relationships	INTR 3-6
directory	CMND 6-2
disc	INTR 3-2
disc, text discussion	CMND 6-30
domains	INTR 3-6
duplicative pairs	INTR 3-90
dumping off-line	SUPR 6-98
error information	INTR 3-67
error-check procedure	INTR 3-44
exclusive access	CMND 6-37
extents	INTR 3-2
file information display	INTR 10-14
file management system	INTR 3-1
fixed-length records	INTR 3-3
formal designator	CMND 6-6
hierarchy	CMND 6-10
how to change specification	CMND 6-7, 6-10
how to define	CMND 6-12
how to dump	CMND 6-59

MPE Index

how to pass	CMND 6-14
how to restore	CMND 6-66
how to use	INTR 3-14
information display	INTR 10-17
information, how to display	CMND 6-51
interactive pairs	INTR 3-90
label	INTR 3-7
level security	SUPR 3-14
list description of	CMND 2-73
listing of	SUPR 4-8
locking and unlocking	INTR 3-53
lockword, text discussion	CMND 6-13
logical records	INTR 3-2
magnetic tape	INTR 3-67
Management System	CONV 2-5,2-6
management system	INTR 3-1
marks on magnetic tape	INTR 3-70
Modifying and Listing Disc Files	UTIL 6-1
multiple access	INTR 3-11
	CMND 6-37
\$NEWPASS	CMND 6-14
no-wait I/Q	INTR 3-58
non-sharables devices	INTR 3-13
numbers	INTR 3-10
\$OLDPASS	CMND 6-14
on non-sharable devices	INTR 3-13
permanent	INTR 3-6
physical records	INTR 3-2
pointer	INTR 3-89
pre-defined	CMND 6-15
Program Files	UTIL 9-1
reading	INTR 3-44, 3-48
record formats	INTR 3-3
record pointer location	CMND 6-26
records	INTR 3-2
Recreating Disc Files	UTIL 2-1
reference format	CMND 6-12
renaming	INTR 3-41
renaming	CMND 2-98
resetting the formal designator	CMND 2-103
restoring security to	CMND 2-123
restoring to system	CMND 2-105
restricting access to	CMND 6-25
Retrieving and Copying Disc Files	UTIL 1-25
retrieving dumped	SUPR 6-102
saving on disc	CMND 2-121
sectors	INTR 3-2
security	SUPR 3-10, 3-11
	CMND 2-10
security, suspending	CMND 2-94
Segmented Library(SL) Files	UTIL 10-1
share access	CMND 6-37
shared, special considerations	INTR 3-14
simultaneous access	CMND 6-34
size, how to determine	CMND 6-30

space allocation	CMND 6-32
spooling	INTR 3-21
storing	SUPR 4-7,6-2
storing	CMND 2-157
system defined	INTR 3-7
system (system failures)	OPER B-11
system condition codes	INTR 3-10
system errors	INTR 10-8
system messages	CMND 10-36
temporary	INTR 3-6
transfers	CMND 6-56
types	INTR 3-7
UDC	CMND 9-15
undefined-length records	INTR 3-3
unlocking	INTR 3-53
updating	INTR 3-55
user labels	INTR 3-60
using	INTR 3-14
variable-length records	INTR 3-3
writing	INTR 3-47, 3-50
FIND Function	UTIL 11-11,11-12
FINDJCW intrinsic	
specifications	INTR 2-65
usage	INTR 4-47
Fixed-head disc	SUPR 6-56
Fixed-length records	INTR 3-3
FLOCK intrinsic	
specifications	INTR 2-66
usage	INTR 3-53
FMTCALENDAR intrinsic	
specifications	INTR 2-68
usage	INTR 4-45
FMTCLOCK intrinsic	
specifications	INTR 2-69
usage	INTR 4-45
FMTDATE intrinsic	
specifications	INTR 2-70
usage	INTR 4-45
FOPEN Intrinsic	CONV 2-3,2-5,3-4
specifications	INTR 2-71
usage	INTR 3-25
foptions	
bit summary	INTR 2-49
description	INTR 2-58
Formal file designator	CMND 6-6
used by commands	INTR 3-7
used by subsystems	CMND 7-24
FORMAT command, VINIT	CMND 7-22
Formatting Calendar date and time	SUPR 1-9
Formatting command parameters	INTR 4-45
Formatting disc packs	INTR 4-4
	OPER 5-18
	SUPR H-1
Forms message	OPER 4-14
FORTGO command	

MPE Index

example	CMND 2-54
parameters	CMND 2-53
text discussion	CMND 7-8
usage	CMND 2-53
FORTPREP command	
example	CMND 2-56
parameters	CMND 2-55
text discussion	CMND 7-6
usage	CMND 2-56
FORTTRAN	CONV 3-2
FORTTRAN command	
example	CMND 2-58
parameters	CMND 2-57
text discussion	CMND 7-4
usage	CMND 2-58
FORTTRAN programs	
compiling	CMND 2-53,2-55,2-57
executing	CMND 2-53
preparing	CMND 2-53, 2-55
FPOINT intrinsic	
specifications	INTR 2-83
usage	INTR 3-89
FREAD and FWRITE for \$STDIN and \$STDLIST	INTR 3-33
FREAD for magnetic tape files	INTR 3-69
FREAD intrinsic	
specifications	INTR 2-84
usage	INTR 3-44
FREADDIR intrinsic	
specifications	INTR 2-86
usage	INTR 3-48
FREADLABLE intrinsic	
specifications	INTR 2-88
usage	INTR 3-60
FREADSEEK intrinsic	
specifications	INTR 2-89
usage	INTR 3-50
Free-Space Table	UTIL 7-1
FREE2	UTIL 7-1,7-2
FREEDSEG intrinsic	
specifications	INTR 2-90
usage	INTR 3-50
Freeing local RIN's	INTR 6-9
FREELOCRIN intrinsic	
specifications	INTR 2-91
usage	INTR 6-9
FREERIN command	
example	CMND 2-59
text discussion	CMND 9-9
usage	CMND 2-59
Freezing segments	DEBUG 2-17, 3-30
FRELATE intrinsic	
specifications	INTR 2-94
usage	INTR 3-90
FRENAME intrinsic	
specifications	INTR 2-94

usage	INTR 3-41
FSERR messages	CMND 10-36
FSETMODE intrinsic	
specifications	INTR 2-96
usage	INTR 3-89
FPSACE intrinsic	
specifications	INTR 2-98
usage	INTR 3-87
Full-duplex	CMND 3-24
Functional return	INTR 2-2
Functions, keyboard	CMND 3-26
FUNLOCK intrinsic	
specifications	INTR 2-99
usage	INTR 3-53
FUPDATE intrinsic	
specifications	INTR 2-99
usage	INTR 3-55
FWRITE and FREAD for \$STDLIST and \$STDIN	INTR 3-33
FWRITE for magnetic tape files	INTR 3-69
FWRITE intrinsic	
specifications	INTR 2-101
usage	INTR 3-50
FWRITEDIR intrinsic	
specifications	INTR 2-106
usage	INTR 3-50
FWRITELABEL intrinsic	
specifications	INTR 2-108
usage	INTR 3-60



G

Generic file names	CMND 6-16
GENMESSAGE intrinsic	
specifications	INTR 2-109
usage	INTR 4-50
GET intrinsic	INTR 2-122
GETDSEG intrinsic	
specifications	INTR 2-113
usage	INTR 8-6
GETJCW intrinsic	
specifications	INTR 2-115
usage	INTR 4-46
GETLOCRIN intrinsic	
specifications	INTR 2-116
usage	INTR 6-8
GETORIGIN intrinsic	
specifications	INTR 2-117
usage	INTR 7-14
GETPRIORITY intrinsic	
specifications	INTR 2-118
usage	INTR 7-13
GETPRIVMODE intrinsic	
specifications	INTR 2-120
usage	INTR 9-3

MPE Index

GETPROCID intrinsic	
specifications	INTR 2-122
usage	INTR 9-3
GETRIN command	INTR 6-2
example	CMND 2-60
text discussion	CMND 9-9
usage	CMND 2-60
GETUSERMODE intrinsic	
specifications	INTR 2-124
usage	INTR 9-5
GIVE command	OPER 1-7, 3-20
Global breakpoint	DEBUG 2-5, 3-28
Global RIN	CMND 9-9
changing number available	INTR 6-2
deleting	SUPR 6-11, 6-36
how to free	SUPR 6-37
listing of	CMND 9-10
Global Variables	SUPR 6-37
Group	SEGM 1-4
assigning private volume set	SUPR 1-17
attributes	SUPR 3-2, 5-9
definition of	SUPR 3-6, 5-3, 5-4
deleting from private volume set	SUPR 5-7
level security	SUPR 3-13
limits	CMND 5-6, 5-7
moving to private volume set	SUPR 1-20
name	SUPR 3-6
name, at logon	CMND 3-6
name, in a JOB command	CMND 4-6
Librarian (GL)	SUPR 3-3
Librarian (GL) attribute	SUPR 5-8
Librarian (GL) creation of	SUPR 5-7, 5-8
Purging	SUPR 5-9
Reports	SUPR 5-9
segmented library break in	DEBUG 2-6, 23
segmented library clear break in	DEBUG 2-9
segmented library display location of	DEBUG 2-25
H	
Half-duplex	CMND 3-24
Halt Instructions (System failures)	OPER B-1
Hand-shaking arrangement	INTR 6-1
Hardcopy terminals	OPER 1-5
Hardware Configuration	CONV 2-7
Hardware halts	OPER A-5, A-6
Header records, how to enable/disable	CMND 8-11
HEADOFF commands	OPER 1-7, 3-21
HEADON command	OPER 1-7, 3-22
HELLO command	
before logging off	CMND 3-11
example	CMND 2-63
parameters	CMND 2-61

text discussion	CMND 3-5
usage	CMND 2-62
HELP command	
example	CMND 2-67
parameters	CMND 2-64
text discussion	CMND 7-16
usage	CMND 2-66
HELP Function	UTIL 11-12a
Help keywords	CMND 7-18
HELP option (UDC declaration)	CMND 9-20
Help subsystem	CMND 7-16
accessing	CMND 2-64
Catalog	SUPR G-2
messages	CMND 10-49
HERR messages	CMND 10-49
HIDE segmenter command	SEGM 1-5,2-17
HIPRI	CMND 3-10, 4-8
Home group	SUPR 3-6
Home group, at logon	CMND 3-6
Home volume set	CMND 6-2
	SUPR 4-10, I-2
Home volume set, mounting	CMND 2-80
HP 2780/3780 Emulator subsystem	CMND 2-110
HP 3000 System Control Panel	OPER 2-1

I

I prefix	
= command	DEBUG 2-27
D command	DEBUG 2-12
M command	DEBUG 2-20
I/O messages	OPER 6-2
I/O system (system failure)	OPER B-9
I/O test	OPER C-4, C-5
IBM 2741 Terminals	CONV 2-4
IF block termination	CMND 2-42
IF command	
example	CMND 2-69
parameters	CMND 2-68
text discussion	CMND 4-21
usage	CMND 2-68
IF statement alternative (ELSE)	CMND 2-41
IMAGE	CONV 3-10
Indirect addressing	DEBUG 3-12
Information Block Size, changing on a USL file	SEGM 3-23
INIT command, VINIT	SUPR 1-8
Initialization, serial disc	SUPR J-1
Initiator/User dialogue	SUPR 6-62, 6-63
INITUSLF intrinsic	INTR 2-125
	SEGM 1-5,2-18,2-19
Input devicefile, text discussion	CMND 8-4
Input devicefiles	OPER 4-4
Input devicefiles, status	CMND 2-135
Input echo facility	INTR 5-11

MPE Index

Input files, spooled	CMND 4-16, 4-17
Input files, state after WARMSTART	CMND 4-17
INPUT Function	UTIL 11-13, 11-14
Input spooling	OPER 4-7, 4-8
control	OPER 4-9 - 4-11
from sessions	CMND 3-19
text discussion	CMND 8-6
Input stream, end-of-data	CMND 2-43
Input stream, end-of-file	CMND 2-44
Input/output devices	INTR 4-16
changing configuration of	SUPR 6-4, 6-16, 6-55
definition of	SUPR 6-16, 6-55
displaying status	CMND 5-6
listing of	SUPR 6-17, 6-67
Input/output efficiency	CMND 6-22
Input/output files	INTR 3-9
Input/Output Queue (IOQ)	SUPR 6-10, 6-35
INPUT/OUTPUT System	CONV 2-5, 2-6
Input/output, buffering	CMND 6-24
Inter-job level RIN's	INTR 6-2
Inter-process communication	INTR 4-46, 7-10
Inter-process level RIN's	INTR 6-6
Inter-record gap	INTR 3-74
Interactive Access (IA) Attribute	SUPR 3-5
Interactive Control Stack (ICS)	SUPR 6-11
Interactive file pairs	INTR 3-90
Interactive option (I)	
definition of	SUPR 6-6
specifying	SUPR 6-27, 6-73
specifying	SUPR B-1-B-10
Interactive processing	OPER 1-1
Interactive session using SETDUMP in	DEBUG 4-3
Internal Flags, setting RBM	SEGM 3-19, 3-22
Internal operations for file accessing	INTR 3-14
Interpreting BASIC programs	CMND 2-13
Intrinsic	
ADJUSTUSLF	SEGM 1-5, 2-6, 2-7
Calls	CONV 3-3
errors	INTR 10-6
EXPANDUSLF	SEGM 1-5, 2-15, 2-16
INITUSLF	SEGM 1-5, 2-18, 2-19
Options, FCONTROL	CONV 2-5
FOPEN	CONV 2-3, 2-5, 3-4
PRINT	CONV 2-2
Intrinsics	SEGM 1-5, 2-2, 2-6, 2-7
	SEGM 2-15, 2-16, 2-18
	SEGM 2-19
	INTR 2-4
	INTR 2-5, 8-10
	INTR 2-7
	INTR 2-9, 8-16
	INTR 2-11, 4-30
	INTR 2-12, 4-10
	INTR 2-14, 4-13
	INTR 2-15, 4-44
ACCEPT	
ACTIVATE	
ADJUSTUSLF	
ALTDSEG	
ARITRAP	
ASCII	
BINARY	
CALENDAR	

calling from other languages	INTR 1-10
calling from SPL	INTR 1-2
CAUSEBREAK	INTR 2-16, 4-44
CLOCK	INTR 2-17, 4-44
COMMAND	INTR 2-18, 4-9
CTranslate	INTR 2-24, 4-13
DASCI I	INTR 2-26, 4-13
DATELINE	INTR 2-28
DBINARY	INTR 2-29, 4-13
DEBUG	INTR 2-30
declaration	INTR 1-2
definition	INTR 1-1
Deleted	CONV 2-2
DLSIZE	INTR 2-31, 4-22
DMOVIN	INTR 2-33, 8-15
error definitions	INTR 1-10
error messages	INTR 10-1
EXPANDUSLF	INTR 2-37
FATHER	INTR 2-39, 7-14
FCARD	INTR 2-40, 5-28
FCHECK	INTR 2-44, 3-67
FCONTROL	INTR 2-52, 3-77, 5-1
FERRMSG	INTR 2-56, 3-65
FGETINFO	INTR 2-57, 3-63
FINDJCW	INTR 2-65, 4-47
FLOCK	INTR 2-66, 3-53
FMTCALNDAR	INTR 2-68, 4-45
FMTCLOCK	INTR 2-69, 4-45
FMTDATE	INTR 2-70, 4-45
FOPEN	INTR 2-71, 3-25
FPOINT	INTR 2-83, 3-89
FREADDIR	INTR 2-86, 3-48
FREADLABEL	INTR 2-88, 3-60
FREADSEEK	INTR 2-89, 3-50
FREEDSEG	INTR 2-90, 8-15
FREELOCRIN	INTR 2-91, 6-9
FRELATE	INTR 2-92, 3-90
FRENAME	INTR 2-94, 3-41
FSETMODE	INTR 2-96, 3-89
FSPACE	INTR 2-98, 3-87
FUNLOCK	INTR 2-99, 3-53
FUPDATE	INTR 2-100, 3-55
FWRITE	INTR 2-101, 3-47
FWRITEDIR	INTR 2-106, 3-50
FWRITELABEL	INTR 2-108, 3-60
GENMESSAGE	INTR 2-109, 4-50
GET	INTR 2-112
GETDSEG	INTR 2-113, 8-6
GETJCW	INTR 2-115, 4-46
GETLOCRIN	INTR 2-116, 6-8
GETORIGIN	INTR 2-117, 7-14
GETPRIORITY	INTR 2-118, 7-13
GETPRIVMODE	INTR 2-120, 9-3
GETPROCID	INTR 2-121, 7-15
GETUSERMODE	INTR 2-124, 9-5

MPE Index

INITUSLF	INTR 2-125
IODONTWAIT	INTR 2-126, 3-60
IOWAIT	INTR 2-128, 3-58
KILL	INTR 2-130, 7-8
LOADPROC	INTR 2-131, 4-2
LOCKGLORIN	INTR 2-132, 6-3
LOCKLOCRIN	INTR 2-134, 6-8
MAIL	INTR 2-136, 7-10
MYCOMMAND	INTR 2-138, 4-4
New	CONV 2-2
PAUSE	INTR 2-141, 4-19
PCHECK	INTR 2-142
PCLOSE	INTR 2-143
PCONTROL	INTR 2-144
POPEN	INTR 2-145
PREAD	INTR 2-146
PRINT	INTR 2-147, 4-16
PRINTFILEINFO	INTR 2-148, 3-44
PRINTOP	INTR 2-149, 4-18
PRINTOPREPLY	INTR 2-150, 4-18
PROCTIME	INTR 2-152, 4-44
PTAPE	INTR 2-153, 5-27
purposes	INTR 1-1
PUTJCW	INTR 2-154, 4-47
PWRITE	INTR 2-155
QUIT	INTR 2-156, 4-20
QUITPROG	INTR 2-157, 4-22
READ	INTR 2-158, 4-16
READX	INTR 2-159, 4-16
RECEIVEMAIL	INTR 2-160, 7-12
REJECT	INTR 2-162
RESETCONTROL	INTR 2-163, 4-40
RESETDUMP	INTR 2-164
SEARCH	INTR 2-165, 4-3
SENDMAIL	INTR 2-166, 7-11
SETDUMP	INTR 2-168
SETJCW	INTR 2-169, 4-46
specification of	DEBUG 2-3
STACKDUMP	INTR 2-170
summary	DEBUG 2-30
summary	INTR 1-3
SUSPEND	INTR 2-172, 7-8
SWITCHDB	INTR 2-173, 9-5
TERMINATE	INTR 2-174, 4-20
TIMER	INTR 2-175, 4-42
types	INTR 2-2
UNLOADPROC	INTR 2-176, 4-3
UNLOCKGLORIN	INTR 2-177, 6-3
WHO	INTR 2-179, 4-10
XARITRAP	INTR 2-182, 4-32
XCONTRAP	INTR 2-184, 4-41
XLIBTRAP	INTR 2-185, 4-35
XSYSTRAP	INTR 2-186, 4-36
ZSIZE	INTR 2-187, 4-27
INTRO state	CMND 5-1

Invoking commands programmatically	SUPR 1-4
IODONTWAIT intrinsic	
specification	INTR 2-126
usage	INTR 3-60
IOWAIT	CONV 2-6
IOWAIT intrinsic	
specification	INTR
usage	INTR 3-58
Irrecoverable communication error codes	OPER 6-21
Issue FREAD & FWRITE calls for \$STDIN & \$STDLIST	INTR 3-35

J

JCW, displaying current state	CMND 2-138
Job	
after WARMSTART	CMND 4-8
changing default CPU time-limit for	SUPR 6-38
changing max. no. of concurrent allowed	SUPR 6-38
command, example	CMND 2-72
command, parameters	CMND 2-70
command, text discussion	CMND 4-4
command, usage	CMND 2-72
displaying status of	CMND 4-12
errors, overriding	CMND 2-31
initiating	CMND 4-4
initiation, batch	CMND 2-70
input file, specifications	CMND 4-14
limit	CMND 5-1
main process	INTR 7-1
name, in JOB command	CMND 4-6
number, assigned by MPE	CMND 4-5
or session file domains	INTR 3-6
output, controlling	CMND 4-8
scheduler	OPER 4-1
states, text discussion	CMND 5-1
status	CMND 5-2, 5-8
status, displaying	CMND 2-139, 2-142
streaming	CMND 4-12
submitting from a session	CMND 4-12
submitting from magnetic tape	CMND 6-23
temporary file directory	INTR 3-18
termination and suspension	CMND 4-8, 4-18
time limit	CMND 4-7
using SETDUMP in	DEBUG 4-6
Job control words	INTR 4-47
current state	CMND 2-138
displaying status of	CMND 4-20
set to a value	CMND 4-20
setting the value of	CMND 2-128
Job/Session evolution	OPER 4-1
Job/session input/output devices	INTR 4-16
Job/Session priority request	SUPR 4-8, 6-111
Jobfence	CMND 3-9, 4-7, 5-1
=JOBFENCE command	OPER 1-7, 3-23

MPE Index

JOBPRI	SUPR 2-17
Julian calendar	INTR 8-8
K	
Keyboard functions	CMND 3-26
Keys, terminal	INTR 5-9
Keyword parameters	CMND 1-4, 2-4
Keywords, help subsystem	CMND 7-18
KILL Function	UTIL 11-14a
KILL intrinsic	
specifications	INTR 2-130
usage	INTR 7-8
L	
L command	
definition	DEBUG 2-18
use	DEBUG 3-9
use in privileged mode	DEBUG 3-28
Label map	DEBUG 3-2
LABEL parameter	
listing	DEBUG 3-2
use	DEBUG 3-1
Label, disc file	CMND 6-52
Labeled magnetic tapefile	
opening	INTR 3-79
reading	INTR 3-85
writing	INTR 3-86
LCST register	
display	DEBUG 2-13, 2-25
stack analysis	DEBUG 4-1, 4-2
Leading colon	SUPR 1-2
LIB parameter	SEGM 1-3
Library	
Group	SEGM 1-3, 1-3
procedures	INTR 4-2
Public	SEGM 1-2, 1-3
Relocatable	SEGM 1-1, 3-10- 3-16
Segmented	SEGM 1-2, 3-16- 3-19
System	SEGM 1-2, 1-3
traps	INTR 4-34
=LIMIT command	OPER 1-7, 3-24
Limits, system resources	CMND 5-6, 5-7
Line deletion echo suppression	INTR 5-23
Line printer	INTR 5-3
Line printer and terminal carriage-control codes	INTR 5-6
Line printer display to	DEBUG 2-18, 3-9, 3-28
Line printer special forms	CMND 8-11
Line terminator	CMND 3-24
Line-termination characters for terminal input	INTR 5-20
Linear subqueue	INTR 9-5
	SUPR 6-105

LIST Function	UTIL 11-15,11-16
LIST option (UDC declaration)	CMND 9-14, 9-18
LISTACCT	SUPR 2-18, 4-4
LISTACCT format	SUPR D-4
LISTDIR2	UTIL 8-1- 8-10
LISTDIR2 Command Examples	UTIL 8-5
LISTEQ2	UTIL 5-1
LISTF command	
example	CMND 2-76
parameters	CMND 2-73
text discussion	CMND 6-50
usage	CMND 2-75
LISTGROUP	SUPR 2-20, 4-4
LISTGROUP format	SUPR D-4
Listing formats	SUPR D-1
LISTLOG2	UTIL 4-1
LISTRL segmenter command	SEGM 1-5,2-20
	SEGM 1-5,2-21
	SUPR 2-22, 4-4
	SUPR D-7
	SEGM 1-5,2-22
	SUPR I-26
	CMND 2-79
	CMND 2-77
	CMND 6-5
	CMND 2-78
	CMND 7-10
	CMND 10-43
	SUPR 6-67, 6-92
	OPER 2-2
	INTR 10-11
	CMND 10-43
	INTR 4-2
	INTR
	INTR 2-131
	INTR 4-2
	SUPR 3-5
	INTR 6-6
	INTR 10-12
	INTR
	INTR 2-132
	INTR 6-3
	INTR 3-53
	INTR 6-3
	INTR 6-8
	INTR 2-134
	INTR 6-8
	CMND 6-13
	CMND 6-55
Log File	
changing elements being written to	SUPR 6-12
changing size of	SUPR 6-12, 6-40
changing size of records	SUPR 6-12, 6-40
commands	SUPR 6-114
LISTUSER	
format	
LISTUSL segmenter command	
LISTVS command	
example	
parameters	
text discussion	
usage	
LMAP keyword parameter, text discussion	
LOAD ERR messages	
Load Map	
LOAD/DUMP switch	
Loader errors	
Loader messages	
Loading library procedures	
LOADPROC intrinsic	
specifications	
usage	
Local attributes	
Local RIN's	
LOCKGLORIN errors	
LOCKGLORIN intrinsic	
LOCKGLORIN intrinsic specifications	
LOCKGLORIN intrinsic usage	
Locking and unlocking files	
Locking and unlocking global RIN's	
Locking and unlocking local RIN's	
LOCKLOCRIN intrinsic	
specifications	
usage	
Lockword, file, text discussion	
Lockword, how to add, remove, change	

MPE Index

configurable characteristics	SUPR 6-114
definition of	SUPR 6-112
errors	SUPR 6-114, 6-135
format	SUPR 6-112
messages	SUPR 6-134
records	SUPR 6-115
security	SUPR 6-114
Log Records	
error	SUPR 6-117
file close	SUPR 6-123
format	SUPR 6-116
head	SUPR 6-118
job initiation	SUPR 6-119
job termination	SUPR 6-121
process termination	SUPR 6-122
types of	SUPR 6-115
Log-on group	CMND 3-6
Logging	OPER 1-3, 5-25
changing status of	SUPR 6-39
device number	SUPR 6-4, 6-19, 6-76
device number	SUPR 6-82
listing status of	SUPR 6-39
memory error	SUPR 6-111
off the system	CMND 3-11
on the system	CMND 3-4
system	SUPR 6-111
Logical code segment index (LCST)	
display	DEBUG 2-13, 25
stack analysis	DEBUG 4-2
Logical device, display to	DEBUG 2-18, 3-28
Logical index number	INTR 8-2
Logical mount/dismount record	SUPR 6-131
Logical number of seconds allowed	SUPR 6-38
Logical records	INTR 3-2
LOGLIST	UTIL 4-1
=LOGOFF command	OPER 1-7, 3-25
=LOGON command	OPER 1-7, 3-26
LOGON option (UDC declaration)	CMND 9-14, 9-20

M

M command	
definition	DEBUG 2-19
use	DEBUG 3-16
use in privileged mode	DEBUG 3-29
Machine Instructions	CONV 3-6
Magnetic tape	
considerations for files	INTR 3-67
files	CMND 6-23
format	CMND 6-61
format	SUPR 6-98
labels	CMND 6-43
labels	INTR D-1
unit	INTR 5-3

with unknown content	CMND 6-22
MAIL intrinsic	
specifications	INTR 2-136
usage	INTR 7-10
Mailbox	INTR 7-10
Main Memory, changing size of	SUPR 6-3, 6-16, 6-56
	SUPR 6-67
MAKECAT program	INTR 4-50
	SUPR G-1
MANAGER SYS	UTIL 4-1- 4-3
MAP parameter	
listing	DEBUG 3-2
use	DEBUG 3-1
Master queue	INTR 9-5
Master subqueue	SUPR 6-105
Master volume	CMND 6-2
	SUPR 4-10, I-2
	UTIL 3-2
MDUMP.PUB.SYS	
MEMLOGAN	
Error Messages	UTIL 12-5
Memory-Logging Operations	UTIL 12-1
Output	UTIL 12-2
Running	UTIL 12-1
Memory Dump	UTIL 3-1
Memory error logging	SUPR 6-111
Memory location in expressions	DEBUG 2-2
Memory logging	OPER 1-4
Memory management (system failure)	OPER B-7
Memory Management Table (MTAB), changing size of	SUPR 6-10, 6-36
Memory test	OPER C-1, C-4
Memory, Virtual	SUPR 6-41
Memory-Dump Procedure	CONV 2-6
MENTIMER	UTIL 13-1,13-2
Message Catalog	
contents of	SUPR 6-11
creation of	SUPR 6-39, G-1
format	SUPR G-3
layout	SUPR G-2
listing of	SUPR 6-39
name of	SUPR 6-39
table	SUPR G-1
Message system	INTR 4-48
	SUPR G-1
MAKECAT program	INTR 4-49
message catalog	INTR 4-48
Message, sending to console operator	CMND 2-164
Message, sending to job or session	CMND 2-162
Messages	
cold-load error	OPER A-1 - A-8
console	OPER 6-2
error	CMND 3-21
forms	OPER 4-14, 5-4
from console operator	CMND 9-4
how to reject	CMND 9-3
how to send	CMND 9-1, 9-3

MPE Index

OFF or ON
operator
run-time
Segmenter Error
suppressing logon and log-off
system
System failure
user
warning, during a session
Micro-programmed diagnostics
MODE Function
Mode
block
character
file access
MR
Modify
base
code
privileged mode
register
value
MOUNT command

example
parameters
text discussion
usage
Mount/dismount record
Mounting disc packs
Mounting volume sets
Moving the DB pointer
Moving-head disc
MPE
MPE commands
specification
use in DEBUG
MPLINE command
MPYD Instruction
MR command
definition
use
use in privileged mode
MR mode
MRJE
MRJE command
example
usage
MRJE/3000 subsystem, accessing
MTS/3000
Multi-access
Multi-access, file
Multi-record mode
Multiple access of files

CMND 2-130
INTR 10-13
INTR 10-2
SEGM 4-1- 4-5
CMND 3-13
INTR 10-13
OPER B-1 - B-5
INTR 10-12
CMND 3-23
OPER C-1
UTIL 11-17

CMND 3-28
CMND 3-28
CMND 6-25, 6-27
CMND 6-25

DEBUG 2-19
DEBUG 2-11, 3-18
DEBUG 2-19, 3-29
DEBUG 2-21, 3-16
DEBUG 2-19, 3-16
OPER 1-7, 3-27
SUPR I-24
SUPR I-28
CMND 2-80
CMND 2-80
CMND 6-4
CMND 2-80
SUPR 6-130, 6-131
OPER 4-20
CMND 6-4
INTR 9-5
SUPR 6-56
CONV 2-1
SEGM 1-5, 2-1, 2-31
DEBUG 2-2
DEBUG 4-3, 4-6, 4-7
OPER 1-7, 3-29
CONV 3-6

DEBUG 2-21
DEBUG 3-16
DEBUG 3-30
CMND 6-25
SUPR 6-15
OPER 1-7, 3-31
CMND 2-81
CMND 2-81
CMND 2-81
SUPR 6-15
INTR 3-6
CMND 6-37
CMND 6-25
INTR 3-11

Multiple RIN optional capability	INTR 6-1
Multiple RINS (MR) Attribute	SUPR 3-4
Multiprogramming	OPER 1-1
MYCOMMAND errors	INTR 10-12
MYCOMMAND intrinsic specifications	INTR 2-138
usage	INTR 4-4
N	
Name	
account	SUPR 3-6
group	SUPR 3-6
Intrinsic	SEGM 2-2
MPE command	SEGM 2-1
Segmenter command	SEGM 2-23
user	SUPR 3-6
Nested commands, user-defined	CMND 9-21
New files	INTR 3-8
New segment names, assigning to RBM's	SEGM 3-10
NEWACCT	SUPR 2-24, 4-4
NEWGROUP	SUPR 2-28, 5-3
\$NEWPASS	CMND 6-14, 7-4, 7-6, 7-10
	INTR 3-8
NEWSEG segmenter command	SEGM 2-23
NEWUSER	SUPR 2-31, 5-4
NEWVSET	SUPR 2-34
No-wait I/O	INTR 3-58
NOBREAK option (UDC declaration)	CMND 9-14, 9-18
NOBUF input/output	CMND 6-24
NOHELP option (UDC declaration)	CMND 9-14, 9-20
Non-sharable Device (ND) Attribute	SUPR 3-3
Non-sharable device access	INTR 3-6
Non-sharable devices	INTR 3-13
Non-system domain devices	SUPR 4-9, I-1, I-3
NOWAIT	CONV 2-6
NOWAIT input/output	CMND 6-24, 6-29
\$NULL	CMND 6-17, 6-18
	INTR 3-8
NULL option	SUPR 6-66
NULL option (RELOAD)	OPER 5-14
Numbers, octal, in commands	CMND 1-3
O	
O prefix	
= command	DEBUG 2-27
D command	DEBUG 2-12
M command	DEBUG 2-20
Obtaining file access information	INTR 3-65
Obtaining file error information	INTR 3-67
Obtaining process run time	INTR 4-44
Obtaining system timer information	INTR 4-42



MPE Index

Obtaining terminal output speed	INTR 5-26
Obtaining terminal type information	INTR 5-25
Obtaining the calendar date	INTR 4-44
Obtaining the current time	INTR 4-44
Octal mode	
display	DEBUG 2-11
expression result	DEBUG 2-27
modify	DEBUG 2-19
Octal numbers, in commands	CMND 1-3
Octal value in expression	DEBUG 2-2
Offset	
display base	DEBUG 2-12
modify base	DEBUG 2-19
Old files	INTR 3-9
\$OLDPASS	CMND 6-14,7-4,7-6,7-10
	INTR 3-9
OP attribute	SUPR 3-2
OPENED, file state	CMND 3-19,4-16- 4-18
Opening	
\$STDIN	INTR 3-33
\$STDLIST	INTR 3-35
a file on a device other than disc	INT 3-30
a new disc file	INTR 3-25
an old disc file	INTR 3-28
files	INTR 3-25
Operator involvement with input devicefiles	OPER 4-5, 4-6
Operator messages	INTR 10-15
Operator's Console	INTR 4-18
Optical Mark Reader	INTR 5-28
OPTION VARIABLE	CONV 3-3
Option variable	INTR 1-7, 2-1
Optional capabilities	
data segment management	INTR 8-1
definitions	INTR 1-12
multiple resource	INTR 6-1
privileged mode	INTR 7-1
process handling	INTR 7-1
Optional parameters	CMND 2-4
	INTR 1-7
Organization of user processes	INTR 7-1
Outfence	CMND 4-17,6-21
=OUTFENCE command	OPER 1-7, 3-33
OUTM Function	UTIL 1-17
Output devicefile	CMND 8-10
	OPER 4-6
status	CMND 2-144
Output files, spooled	CMND 4-16, 4-18
Output files, state after WARMSTART	CMND 4-18
OUTPUT Function	UTIL 11-19,11-20
Output spooling	OPER 4-11
Output spooling control	OPER 4-12 - 4-14
Output spooling, text discussion	CMND 8-12
Output, headers and trailers	CMND 6-41
Output, to special forms	CMND 8-11
Ownership of devices, text discussion	CMND 8-1

P

P register	
assign value	DEBUG 2-18, 3-17
display	DEBUG 2-13, 2-25
modify	DEBUG 2-21, 3-16
stack analysis	DEBUG 3-20, 4-2
P-relative addressing	DEBUG 2-11, 3-18
Padding	CMND 6-23
PANEL DSBL-ENBL switch	OPER 2-1
Paper tape punch	INTR 5-3
Paper tape reader	INTR 5-1
Paper tape, reading without X-OFF	CMND 2-88
Paper tapes	INTR 5-21
how to read	CMND 9-8, 9-9
X-OFF and X-ON	CMND 9-5
Parameter File (SF) Attribute	SUPR 3-3
Parameter settings	SUPR C-1
Parameter, delimiters	CMND 1-2
Parameter, keyword	CMND 1-4
Parameter, positional	CMND 1-3
Parameters	
DEBUG commands	DEBUG 2-2
DEBUG intrinsics	DEBUG 2-3
definition	INTR 1-7
definition of	SUPR 1-2
Intrinsic	SEGM 2-3
keyword	SUPR 1-2, 1-3
list of	SUPR 1-3
MPE command	SEGM 2-2
MPE commands	DEBUG 2-3
option variable	INTR 1-7
	CMND 2-4
optional	INTR 1-7
passing by value	INTR 1-7
positional	INTR 1-7
positional	SUPR 1-2
required	INTR 1-8
Segmenter command	SEGM 2-2
using numeric values	INTR 1-8
Parity, checking	CMND 3-23
	INTR 5-14
	INTR 5-23
Parity, setting	CMND 6-14
Passing files	INTR 1-7
Passing parameters	CMND 3-6
Password, at logon	CMND 4-6
Password, in a JOB command	CMND 9-9
Password, RIN	UTIL 8-10
Passwords	UTIL 9-1- 9-3
PATCH	UTIL 9-3
PATCH Error Numbers	
PAUSE intrinsic	
specifications	INTR 2-141
usage	INTR 4-19
PB-relative addressing	DEBUG 2-11, 3-18

MPE Index

PCB register display	DEBUG 2-13, 3-13
PCHECK intrinsic	INTR 2-142
PDEFN command, VINIT	SUPR 1-12
PDSK Function	UTIL 1-19
PDTT Function	UTIL 1-21
Perform Cold dump operation	OPER 5-32
Permanent files	INTR 3-6
Permanently privileged programs	INTR 9-1
PF/ARS DSBL-ENBL switch	OPER 2-1
PFIL Function	UTIL 1-23
PFRE Function	UTIL 1-25
PFSPACE command, VINIT	SUPR 1-14
Physical mount/dismount record	SUPR 6-130
Physical records	INTR 3-2
PIN	INTR 7-1
PL-relative addressing	DEBUG 2-11, 3-20
PLABEL command, VINIT	SUPR 6-13
PM (privileged mode)	CMND 7-3
PMP keyword parameter, text discussion	CMND 7-9
PMP parameter	
listing	DEBUG 3-4
use	DEBUG 3-1
POPEN intrinsic	INTR 2-145
Positional parameters	CMND 1-2, 2-4
	INTR 1-7
Power down system	OPER 5-12
Power failure	CMND 3-21, 4-8, 4-19
and Input spooling	OPER 4-11
Power up system	OPER 5-11
Pre-defined files	CMND 6-15
	INTR 3-8
	INTR 2-146
PREAD intrinsic	
PREP command	CMND 2-84
example	CMND 2-82
parameters	CMND 7-9
text discussion	CMND 2-83
usage	SEGM 1-5, 2-24, 2-25
PREPARE segmenter command	CMND 2-82, 2-85
Preparing a compiled program	
PREPRUN command	CMND 2-87
example	CMND 2-85
parameters	CMND 7-10
text discussion	CMND 2-87
usage	CONV 3-6
Primary Storage Space Overflow	CONV 2-2
PRINT Intrinsic	INTR 2-147
specifications	INTR 4-16
usage	
PRINTFILINFO intrinsic	INTR 2-148
specifications	INTR 3-44
usage	INTR 5-3
Printing reader/punch	
PRINTOP intrinsic	INTR 2-149
specifications	INTR 4-18
usage	

Priority	
BS	CMND 3-8, 3-9
circular	CMND 3-8
CS	CMND 3-9, 4-7
default	CMND 3-8, 4-7
DS	CMND 3-9, 4-7
ES	CMND 3-9
HIPRI	CMND 3-10, 4-8
in STREAM command	CMND 4-14
input	CMND 3-9, 4-7
job	CMND 3-8, 4-7
linear	CMND 3-8
maximum	CMND 3-9
output	CMND 4-9
output	CMND 6-21
session	CMND 3-8
Private breakpoints	DEBUG 2-5, 3-28
Private data area	INTR 7-1
Private disc volumes	OPER 1-2, 4-17 - 4-24
Private disc volumes (UV) attribute	SUPR 3-3
Private volume conditioning	OPER 4-22
Private volumes	CMND 6-1
	SUPR 4-9, I-1
	UTIL 8-2a
applications	SUPR I-31
assigning set to group	SUPR I-17
definition	CMND 6-1
errors	INTR 10-13
messages	CMND 10-46
moving existing group to	SUPR I-20
subsystem	INTR 3-14
text discussion	CMND 6-1- 6-5
using	SUPR I-3
Privilege Mode (PM) Attribute	SUPR 3-4
Privileged Mode	CONV 2-5
Privileged mode capability	CMND 7-3
	INTR 9-1
Privileged Mode command summary	DEBUG 3-27
Privileged Mode use with DEBUG	DEBUG 3-26
Privileged mode, warning	CMND 2-34
Procedure type	INTR 2-2
Procedures	INTR 1-1
Process activation	INTR 7-14
Process and user related (system failure)	OPER B-10
Process break	INTR 4-19
Process control block (PCB) display	DEBUG 2-13, 3-30
Process Control Block (PCB) Table change size of	SUPR 6-10, 6-35
Process control block extension	INTR 3-14
Process identification number	INTR 7-1
Process priorities	INTR 7-15
Process run time	INTR 4-44
Process states	INTR 7-15
Process substates	INTR 7-2
Process-handling (PH) Attribute	SUPR 3-5
Process-handling capability	INTR 7-1

MPE Index

Process-to-process communication	INTR 7-2
Processes	
aborting	INTR 4-20
activating	INTR 7-3
avoiding deadlocks	INTR 7-13
breaking	INTR 4-19
creating	INTR 7-3
deleting	INTR 7-8
description	INTR 7-1
father	INTR 7-3
identification number	INTR 7-1
inter-process communication	INTR 4-44
mail	INTR 7-10
organization	INTR 7-2
process-handling capability	INTR 7-1
rescheduling	INTR 7-13
run time	INTR 4-44
scheduling	INTR 9-5
son	INTR 7-3
state	INTR 7-15
substate	INTR 7-2
suspending	INTR 4-19, 7-8
terminating	INTR 4-20
PROCTIME intrinsic	
specifications	INTR 2-152
usage	INTR 4-44
Program	
allocation/execution	CMND 7-3, 7-8, 7-10, 7-13
attributes	SUPR 3-3
Capability Sets	SUPR 3-1
commands, a list of	CMND 3-14
compilation	CMND 7-1, 7-4, 7-6, 7-8
errors	INTR 10-5
execution after break	CMND 2-109
Files	UTIL 9-1
Files, preparing	SEGM 3-9
how to abort	CMND 2-9, 3-17
label	INTR 7-1
preparation	CMND 7-3, 7-6, 7-8, 7-9
prepared, execution of	CMND 2-118
reading from standard input device	CMND 4-10
Programmatic execution of MPE commands	INTR 4-9
PTAPE command	
example	CMND 2-89
text discussion	CMND 9-5
usage	CMND 2-88
PTAPE intrinsic	
specifications	INTR 2-154
usage	INTR 5-27
Punching paper tapes	CMND 9-5
PURGE command	
example	CMND 2-91
parameters	CMND 2-90
text discussion	CMND 6-57
usage	CMND 2-90

PURGE Function	UTIL 11-21
PURGEACCT	SUPR 2-36, 4-8
PURGEGROUP	SUPR 2-38, 5-7
PURGERBM segmenter command	SEGM 1-5,2-26
PURGERL segmenter command	SEGM 1-5,2-27
PURGESL segmenter command	SEGM 1-5,2-28
PURCEUSER	SUPR 2-40, 5-8
PURGEVSET	SUPR 2-41
PUTJCW intrinsic	INTR 2-154
specifications	INTR 4-47
usage	CMND 0-46
PVERR messages	UTIL 1-27
PVOL Function	INTR 2-155
PWRITE intrinsic	
Q	
Q register	
assign value	DEBUG 2-28, 3-17
displacement from	DEBUG 2-25, 4-2
display	DEBUG 2-13, 3-16
modify	DEBUG 2-21, 3-16
stack analysis	DEBUG 3-20, 4-2
Q-relative addressing	DEBUG 3-11,3-12
QASL Instruction	CONV 3-6
QASR Instruction	CONV 3-6
QS parameter	DEBUG 2-34
QUANTUM	SUPR 2-42, 6-107
QUANTUM Command	CONV 2-6
Queues	INTR 9-5
Quiet mode (SETMSG OFF)	CMND 2-130
Quiet mode, text discussion	CMND 9-3
QUIET, in SHOWJOB listing	CMND 5-6
QUIT Function	UTIL 11-22a
QUIT intrinsic	
specifications	INTR 2-156
usage	INTR 4-20
QUITPROG intrinsic	
specifications	INTR 2-157
usage	INTR 4-22
R	
R command	
definition	DEBUG 2-23
use	DEBUG 3-9
use in privileged mode	DEBUG 3-28
RBM (relocatable binary module)	CMND 7-3
deleting	SEGM 3-10
Entry Points	SEGM 2-3
Internal Flags, setting	SEGM 3-19,3-22
listing of	SEGM 3-7
transferring	SEGM 3-9

MPE Index

READ intrinsic	
specifications	INTR 2-158
usage	INTR 4-16
Reading	
a file in direct-access mode	INTR 3-48
a file in sequential order	INTR 3-44
cards with colons in column one	OPER 5-16
data	CMND 3-18, 4-10
input from \$STDIN and \$STDINX	INTR 4-16
magnetic tape files	INTR 3-70
paper tapes without X-OFF control	INTR 5-27
the terminal input timer	INTR 5-19
user file labels	INTR 3-60
READX intrinsic	
specifications	INTR 2-159
usage	INTR 4-16
Ready list	CMND 3-8
READY, file state	CMND 3-19, 4-16- 4-18
=RECALL command	OPER 1-7, 3-34
RECEIVEMAIL intrinsic	
specifications	INTR 2-160
usage	INTR 7-12
Receiving mail	INTR 7-12
Record formats	INTR 3-3
Record padding	CMND 6-23
Record width	SUPR 6-72, A-1- A-3
	SUPR B-1- B-10
Records	INTR 3-2
RECOVER2	UTIL 2-1, 2-2
REDO command	
example	CMND 2-93
text discussion	CMND 3-22
usage	CMND 2-92
Reference specifications	SUPR 1-4
=REFUSE command	OPER 1-7, 3-35
Registers	
assign value	DEBUG 2-28, 3-17
display	DEBUG 2-13, 3-16
modify	DEBUG 2-21, 3-16
REJECT intrinsic	INTR 2-162
RELEASE command	
example	CMND 2-94
parameters	CMND 2-94
text discussion	CMND 6-56, 6-71
usage	CMND 2-94
Releasing global RIN's	INTR 6-3
RELOAD	OPER 4-15, 5-12
Reload	SUPR 6-55, 6-65
RELOAD options	OPER 5-13
Relocatable binary module	CMND 7-3
Relocatable Libraries (RL's)	
adding procedure to	SEGM 3-11, 3-12
creating	SEGM 3-10, 3-12
definition of	SEGM 1-1
design for management of	SEGM 3-13

listing of	SEGM 3-11, 3-12
REMOTE HELLO command, parameters	CMND 2-95
REMOTE HELLO command, usage	CMND 2-96
Removable discs	SUPR 4-9
RENAME command	
example	CMND 2-99
parameters	CMND 2-98
text discussion	CMND 6-55
usage	CMND 2-98
Renaming a file	INTR 3-41
=REPLY command	OPER 1-7, 3-36
REPORT	SUPR 2-44, 4-6
REPORT command	
example	CMND 2-102
parameters	CMND 2-100
text discussion	CMND 5-7
usage	CMND 2-101
Report, job session status	CMND 5-3
Requesting a process break	INTR 4-17
Requesting a reply from the Operator's Console	INTR 4-18
Required parameters	INTR 1-8
Rescheduling processes	INTR 7-13
RESET command	
example	CMND 2-103
text discussion	CMND 6-48
usage	CMND 2-103
RESET DUMP intrinsic	INTR 2-164
RESETACCT	SUPR 2-46, 4-7
RESETCONTROL intrinsic	
specifications	INTR 2-163
usage	INTR 4-40
RESETDUMP command	
definition	DEBUG 2-32
example	CMND 2-104
usage	CMND 2-104
use	DEBUG 4-7
RESETDUMP intrinsic	
definition	DEBUG 2-31
use	DEBUG 4-7
Resetting the logical record pointer	INTR 3-89
Resource accounting	CMND 5-7
Resource Identification number (RIN)	CMND 9-9
acquiring	INTR 6-1
releasing	CMND 2-60
Resource management	CMND 2-59
Resource, display usage	INTR 6-1
Resource, limits	CMND 5-7
Resources	CMND 5-6, 5-7
RESTORE	INTR 6-1
RESTORE Command	SUPR 2-47, 6-102
error messages	CONV 2-5
example	CMND 6-68
parameters	CMND 2-108
text discussion	CMND 2-105
	CMND 6-57, 6-59, 6-66

MPE Index

usage	CMND 2-107
RESTORE option	SUPR 6-66
RESTORE option (RELOAD)	OPER 5-14
Restoring user files from sysdump tape or disc	OPER 5-24
RESUME command	
example	CMND 2-109
text discussion	CMND 3-16
usage	CMND 2-109
=RESUMEJOB command	OPER 1-7, 3-38
RESUMELOG	SUPR 2-51, 6-114
Resuming execution	
with E command	DEBUG 2-16, 3-9
with R command	DEBUG 2-23, 3-9
Retrieving Dumped Files	SUPR 6-102
Returns, intrinsic	INTR 2-2
REVEAL segmenter command	SEGM 1-5,2-30
RIN (Resource Identification Number)	INTR 6-1
acquiring	CMND 2-60
changing values regarding	SUPR 6-11
ownership	CMND 9-10
password	CMND 9-9
text discussion	CMND 9-9
releasing	CMND 2-59
RINS, Global	SUPR 6-11, 6-36, 6-37
RJE command	
example	CMND 2-111
parameters	CMND 2-110
usage	CMND 2-111
RJE/3000 subsystem command	CMND 2-110
RPG command	
example	CMND 2-113
parameters	CMND 2-112
text discussion	CMND 7-4
usage	CMND 2-113
RPG program	
compiling	CMND 2-112,2-114,2-117
executing	CMND 2-115
preparing	CMND 2-114,2-115,2-117
RPGGO command	
example	CMND 2-115
parameters	CMND 2-114
text discussion	CMND 7-8
usage	CMND 2-114
RPGPREP command	
example	CMND 2-117
parameters	CMND 2-116
text discussion	CMND 7-6
usage	CMND 2-116
RUN command	
example	CMND 2-120
parameters	CMND 2-118
text discussion	CMND 7-13
usage	CMND 2-119
RUN Function	UTIL 11-22c
RUN indicator	OPER 2-2

Run-time errors	INTR 10-7
Run-time messages	INTR 10-2
RUN/HALT switch	OPER 2-3
S	
S register	
assign value	DEBUG 2-28, 3-17
display	DEBUG 2-13, 3-16
modify	DEBUG 2-21, 3-16
stack analysis	DEBUG 4-2
SADUTIL	UTIL 1-1
Creating a Cold-Load Tape	UTIL 1-2- 1-5
Dialog With Operator	UTIL 1-7
Error Messages	UTIL 1-34,1-35
SAVE command	
example	CMND 2-122
parameters	CMND 2-121
text discussion	CMND 6-58
usage	CMND 2-121
SAVE Function	UTIL 1-29
Scheduling Processes	CONV 2-4,2-6
	INTR 9-5
Scheduling Queue , changing	SUPR 6-12, 6-43
SCRATCH command, VINIT	SUPR I-10
SDERR messages	CMND 10-50
SEARCH intrinsic	
specifications	INTR 2-165
usage	INTR 4-3
Searching arrays	INTR 4-3
Sector display	DEBUG 2-15, 3-29
Sectors	INTR 3-2
SECURE command	
example	CMND 2-123
text discussion	CMND 6-57, 6-71
usage	CMND 2-123
Security	
Account-level	SUPR 3-11
File	SUPR 3-10
file, suspending	CMND 2-94
Group-level	SUPR 3-13
on files	CMND 2-10
Restrictions	UTIL 8-9
restoring to a file	CMND 2-123
Segment Names, New, assigning to RBM's	SEGM 3-10
Segment number	
B command	DEBUG 2-7
location	DEBUG 3-6
R command	DEBUG 2-23
Segmented Libraries	
adding a procedure to	SEGM 3-16,3-18
creating	SEGM 3-16,3-17
definition of	SEGM 1-2
deleting an entry point from	SEGM 3-19

MPE Index

designating for mgt. of	SEGM 3-19
listing of	SEGM 3-16, 3-18
Segmented Library(SL) Files	UTIL 10-1
SEGMENTER command	SEGM 1-5, 2-31
example	CMND 2-124
usage	CMND 2-124
Segmenter	SEGM 3-1
accessing and exiting	SEGM 1-5, 2-2
Commands	SEGM 2-4- 2-34
	INTR 7-6
driver	SEGM 4-1- 4-5
Error Messages	INTR 7-6
subsystem	
Segments	
activating	INTR 8-10
changing size of extra data segment	INTR 8-15
code segments	INTR 8-1
creating an extra data segment	INTR 8-2
data segment management capability	INTR 8-1
data segments	INTR 8-1
deleting	INTR 8-15
description	INTR 8-1
freezing	DEBUG 2-17, 3-30
logical index number	INTR 8-2
stack segment	INTR 8-1
trans. data from extra data seg to stk.	INTR 8-15
trans. data from stk to extra data seg.	INTR 8-15
unfreezing	DEBUG 2-26, 3-30
Sending mail	INTR 7-11
SENDMAIL intrinsic	
specifications	INTR 2-166
usage	INTR 7-11
Sequence field, in commands	CMND 1-5
Sequence number, in STREAM file	CMND 1-5
Sequence numbers, in commands	CMND 4-4
Sequential access file reading	INTR 3-44
Sequential access file writing	INTR 3-47
SERIAL command, VINIT	SUPR 1-10
Serial disc	SUPR 4-9
backup to	SUPR 6-97
defined	SUPR 6-2
initialization	SUPR J-1
messages	CMND 10-50
specifying class	SUPR 6-33, 6-77
volumes	OPER 1-2
volumes, for STORE and RESTORE	CMND 6-61
=SESSION command	OPER 1-7, 3-39
Session	OPER 1-1
identity, fully-qualified	CMND 3-5
initiating	CMND 2-61
main process	INTR 7-1
name, at logon	CMND 3-7
states, text discussion	CMND 5-1
status	CMND 5-8
status, displaying	CMND 2-139, 2-142

termination (BYE command)	CMND 2-23
termination and suspension	CMND 3-20
time limit	CMND 3-8
using SETDUMP in	DEBUG 4-3
Sessions, changing max.no. of concurrent allowed	SUPR 6-38
Sessions, command logon	CMND 3-12
SETCATALOG command	
example	CMND 2-125
text discussion	CMND 9-17
	CMND 2-125
SETDUMP command	
definition	DEBUG 2-34
example	CMND 2-127
parameters	CMND 2-127
usage	CMND 2-127
use in job	DEBUG 4-6
use in session	DEBUG 4-3
SETDUMP intrinsic	INTR 2-168
definition	DEBUG 2-33
use in job	DEBUG 4-6
use in session	DEBUG 4-5
SETJCW command	
example	CMND 2-129
parameters	CMND 2-128
text discussion	CMND 4-20
usage	CMND 2-128
SETJCW intrinsic	
specifications	INTR 2-169
usage	INTR 4-46
SETMSG command	
example	CMND 2-130
text discussion	CMND 9-3
usage	CMND 2-130
Setting parity	INTR 5-23
Setting terminal type	INTR 5-25
Setting unedited terminal mode	INTR 5-26
SF attribute	SUPR 3-3
Share access, file	CMND 6-37
Shared files	INTR 3-14
Shift Instruction Differences	CONV 3-6
SHOW Function	UTIL 11-23- 11-25
SHOWCATALOG command	
example	CMND 2-131
text discussion	CMND 9-17
usage	CMND 2-131
=SHOWDEV command	OPER 1-7, 3-40
SHOWDEV command	
example	CMND 2-134
parameters	CMND 2-132
text discussion	CMND 8-1
usage	CMND 2-132
SHOWIN command	OPER 1-8, 3-42
example	CMND 2-137
parameters	CMND 2-135
text discussion	CMND 8-8

MPE Index

usage	CMND 2-136
SHOWJCW command	
example	CMND 2-138
text discussion	CMND 4-20
usage	CMND 2-138
SHOWJOB command	OPER 1-8, 3-45
example	CMND 2-141
parameters	CMND 2-139
text discussion	CMND 5-2
usage	CMND 2-140
SHOWLOG	SUPR 2-52, 6-114
SHOWME command	
example	CMND 2-143
text discussion	CMND 5-8
usage	CMND 2-142
SHOWOUT command	OPER 1-8, 3-48
example	CMND 2-147
parameters	CMND 2-144
text discussion	CMND 8-12
usage	CMND 2-145
SHOWQ	SUPR 2-53, D-10
SHOWQ Command	CONV 2-6
=SHOWQ command	OPER 1-8, 3-51
SHOWTIME command	OPER 1-8, 3-53
example	CMND 2-148
text discussion	CMND 9-10
usage	CMND 2-148
=SHUTDOWN command	OPER 1-8, 3-54
Shutdown procedure	OPER 5-26
SL segmenter command	SEGM 1-5, 2-32
SLPATCH	UTIL 10-1- 10-3
SM attribute	SUPR 3-1
Son process	INTR 7-3
Source of file characteristics	INTR 3-18
Source of process activation	INTR 7-14
SPACE utilization by system disc	SUPR E-1
Spacing on disc or tape files	INTR 3-89
Special Characters	DEBUG
# prefix	DEBUG 2-2
\$ command	DEBUG
\$ command definition	DEBUG 2-28
\$ command use	DEBUG 3-17
% prefix	DEBUG 2-2
= command definition	DEBUG 2-27
= command use	DEBUG 3-17
Special forms output	CMND 6-42, 8-11
Special terminal keys	INTR 5-8
SPEED command	
example	CMND 2-150
parameters	CMND 2-149
text discussion	CMND 9-4
usage	CMND 2-149
SPL	CONV 3-4
calling intrinsics from	INTR 1-2
command	

command, example	CMND 2-152
command, parameters	CMND 2-151
command, text discussion	CMND 7-4
command, usage	CMND 2-152
description	INTR 1-1
program	
program, compiling	CMND 2-151, 2-153, 2-1
program, executing	CMND 2-153
program, preparing	CMND 2-153, 2-155
SPLGO command	
example	CMND 2-154
parameters	CMND 2-153
text discussion	CMND 7-8
usage	CMND 2-153
Split stack	INTR 1-11, 2-3
SPLPREP command	
example	CMND 2-156
parameters	CMND 2-155
text discussion	CMND 7-6
usage	CMND 2-155
SPOOK	
Command Entry	UTIL 11-3
Commands	UTIL 11-5- 11-29
Error Messages	UTIL 11-31
Operations	UTIL 11-1, 11-2
Running	UTIL 11-3
=SPOOL command	OPER 1-8, 3-55
Spooled devicefile	CMND 3-19, 6-21
ACTIVE state	CMND 3-19
after power failure	CMND 3-21
after WARMSTART	CMND 3-20
displaying states	CMND 3-20
OPENED state	CMND 3-19
priority	CMND 3-19
READY state	CMND 3-19
Spooled input file, state of	CMND 8-6
Spooled input files	CMND 4-16, 4-17
Spooled output	CMND 4-9
Spooled output file, state of	CMND 8-12
Spooled output files	CMND 4-16, 4-18
Spooler, text discussion	CMND 8-6
Spoolfiles	
change maximum number of opened	SUPR 6-30, 6-75
change size of	SUPR 6-42
Spooling	INTR 3-21
definition	OPER 1-1
effect on jobs	CMND 4-16
effect on sessions	CMND 3-19
Facility	CONV 2-7
Input	OPER 4-7
Input control	OPER 4-9
option (S)	SUPR
option (S) definition of	SUPR 6-7
option (S) designate	SUPR 6-27, 6-73
option (S) designate	SUPR B-1-B-10

MPE Index

Output	OPER 4-9
Output control	OPER 4-11
SPREAD option	SUPR 6-65
SPREAD option (RELOAD)	OPER 5-13
ST parameter	DEBUG 2-34
ST register	
assign value	DEBUG 2-28, 3-17
display	DEBUG 2-14, 3-16
modify	DEBUG 2-21, 3-16
Stack	
changes to limits	SUPR 6-44
changing size	INTR 4-2
delete values from	DEBUG 2-16, 4-5
dump	DEBUG
dump analysis	DEBUG 4-10
Dump facility	DEBUG
Dump facility capabilities	DEBUG 1-2
Dump facility specifications	DEBUG 2-30
Dump facility use	DEBUG 4-1
markers	DEBUG
markers display	DEBUG 2-25, 3-20, 4-1
Requirements	CONV 2-3,3-2
segment	INTR 8-1
segment index (STAK)	DEBUG
segment index (STAK) display	DEBUG 2-13, 3-30
sizes	INTR 4-22
split stack	INTR 1-11, 2-3
trace and analysis	DEBUG 4-1
Stackdump facility, disabling	CMND 2-104
Stackdump facility, enabling after abort	CMND 2-127
STACKDUMP intrinsic	INTR 2-170
definition	DEBUG 2-35
use	DEBUG 4-8
STAK register	DEBUG
STAK register display	DEBUG 2-13, 3-30
Standard instructions (System Startup)	OPER 5-15
Standard traps	INTR 4-31
Standard User	SUPR 3-3
Startup	SUPR 6-53
Startup procedure	OPER 4-22, 5-13, 5-24
State of spooled input file	CMND 8-6
State of spooled output file	CMND 8-12
States and status, text discussion	CMND 5-1
Status (ST) messages	OPER 6-2
Status report	CMND 5-3
Status	
disc drive	CMND 2-38
disc drives, displaying	CMND 8-15
input devicefiles	CMND 2-135
input/output device	CMND 2-132
job and sessions	CMND 2-139, 2-142, 5-8
output devicefiles	CMND 2-144
volume set	CMND 6-5
\$STDIN	CMND 6-17, 6-18
	INTR 3-7

\$STDINX	CMND 6-17, 6-18
	INTR 3-8
\$STDLIST	CMND 6-17, 6-18
	INTR 3-8
\$STDLIST, job/session listing devicefile	CMND 8-10
STOP Function	UTIL 1-33
Storage devices (care & handling)	OPER G-1
STORE	SUPR 2-55, 4-7, 6-98
STORE command	
error messages	CMND 6-66
example	CMND 2-159
parameters	CMND 2-157
text discussion	CMND 6-57, 6-59, 6-61
usage	CMND 2-158
STORE tape format	CMND 6-62
	SUPR F-1
	SUPR 4-7
Storing Files	
STREAM command	
example	CMND 2-161
parameters	CMND 2-160
text discussion	CMND 4-12
usage	CMND 2-160
STREAM file sequence numbers	CMND 1-5
Stream, of commands	CMND 4-1
=STREAMS command	OPER 1-8, 3-62
Sub-type	SUPR 6-20, 6-69,
	SUPR A-1-A-3
	SUPR B-1-B-10
Subqueues	INTR 9-5
Substates	INTR 7-2
Subsystem break function	INTR 5-14
Subsystem execution	CMND 7-16
Subsystems	CONV 3-1
SUPPORT Account	SUPR 4-1
SUSP	OPER 3-11, 3-33, 3-34
SUSP state	CMND 5-1
SUSPEND errors	INTR 10-12
SUSPEND intrinsic	
specifications	INTR 2-172
usage	INTR 7-8
Suspending processes	INTR 7-8
Suspending the calling process	INTR 4-19
SWITCHDB intrinsic	
specifications	INTR 2-173
usage	INTR 9-5
SWITCHLOG	SUPR 2-58, 6-114
Symbol map	DEBUG 3-2
SYS Account	SUPR 4-1
SYSDUMP	OPER 5-22
	SUPR 2-59, 6-14, 6-97
	SUPR F-3
SYSDUMP tape format	SUPR 6-50
System Back-up only	SUPR 6-50, 6-97
System Back-up with files	SUPR 6-50, 6-97
System break function	INTR 5-13
System Buffers	SUPR 6-11, 6-36

MPE Index

System changes	SUPR 6-2
System Configurator	SUPR 6-16, 6-49
System Console	CONV 2-6
System DC power switch	OPER 5-4, 5-5
System defined files	INTR 3-7
System domain discs	SUPR 4-9, I-1
System dump magnetic tape format	OPER D-1
System failure list	
CS/3000 Intrinsic	OPER B-14
DS/3000 User related problem	OPER B-14
File system	OPER B-11
Halt instructions	OPER B-1
I/O system	OPER B-9
Memory management	OPER B-7
Process and user related	OPER B-10
Serial disc	OPER B-14
System internals	OPER B-5
User interface	OPER B-13
System failures	OPER B-1, B-10
System file domain	INTR 3-6
System global breakpoints	DEBUG 2-5, 3-28
System global relative (SY)	
display base	DEBUG 2-11, 3-29
modify base	DEBUG 2-19
SYSTEM HALT indicator	OPER 2-2
System internals (system failure)	OPER B-5
System Library segments	
adding	SUPR 6-46
changing	SUPR 6-13, 6-45
deleting	SUPR 6-45
listing	SUPR 6-45, 6-47
replacing	SUPR 6-46
System logging	OPER 1-3
	SUPR 6-111
System Manager (SM)	
altering volume set/class	SUPR 4-12
attribute	SUPR 3-1
create and modify accounts	SUPR 3-6
defining volume set/class	SUPR 4-11
definition and functions	SUPR 3-1, 4-1
Displaying Accounting information	SUPR 4-5
System messages and monitoring	OPER 1-2
System Modification	SUPR 6-16
System power-down	OPER 5-4
System power-up	OPER 5-5
System procedures	INTR 1-1
System Programs, changing	SUPR 6-13, 6-45
System prompts and messages	OPER 1-4
System segmented library	DEBUG
System segmented library break in	DEBUG 2-6, 2-23
System segmented library clear break in	DEBUG 2-9
System segmented library display location of	DEBUG 2-25
System shutdown	OPER 5-3
System Startup	SUPR 6-53
COLDSTART	OPER 4-16, 5-8

COOLSTART	OPER 4-15, 5-7
RELOAD	OPER 4-16, 5-12
UPDATE	OPER 4-15, 5-10
WARMSTART	OPER 4-15, 5-6
System Supervisor (OP)	
attribute	SUPR 3-2
definition and function of	SUPR 3-2, 6-1
SYSTEM SWITCH REGISTER	OPER 2-2
System termination	CMND 3-21, 4-17
	CMND 3-21, 4-8, 4-19
System timer	INTR 4-42
System traps	INTR 4-35
System volume conditioning	OPER 4-22
System-defined file designators	CMND 6-15
Systems Programming Language, call intrin. from	INTR 1-2
SYSVS, System volume set	CMND 6-2
	SUPR 4-10
T	
T command	
definition	DEBUG 2-25
use	DEBUG 3-30
TAKE command	OPER 1-8, 3-63
Tape files	CMND 6-44, 6-47
Tape labels	CMND 6-43
how to write	CMND 6-47
MPE	INTR 3-73
writing	INTR 3-82
Tape mode	CMND 3-23
Tape volumes	OPER 1-3
Tape-mode option	INTR 5-15
TASL Instruction	CONV 3-6
TASR Instruction	CONV 3-6
=TELL command	OPER 1-8, 3-64
TELL command	
during break	CMND 3-16
example	CMND 2-163
parameters	CMND 2-162
text discussion	CMND 9-1
usage	CMND 2-162
TELLOP command	
example	CMND 2-164
usage	CMND 2-164
Temporarily privileged programs	INTR 9-2
Temporary files	INTR 3-6
Temporary registers	
assign value	DEBUG 2-28, 3-17
display	DEBUG 2-13, 3-16
modify	DEBUG 2-21, 3-16
Terminal and line printer carriage-control codes	INTR 5-6
Terminal Buffers	SUPR 6-10, 6-35
Terminal input timer	INTR 5-16
Terminal, keyboard functions	CMND 3-26

MPE Index

Terminal, logon characteristics	CMND 3-23
Terminal, special types	CMND 3-28
Terminal speed	INTR 5-10
changing	CMND 2-149
how to change	CMND 9-4
sensing at logon	CMND 3-23
Terminal type	
specifying	
at logon	SUPR 6-21, 6-69,
	SUPR B-1-B-10
Terminals	CMND 3-7
Terminals, IBM 2741	INTR 5-8, 5-9
Terminals supported by MPE	CONV 2-4
Terminate execution	CMND A-1
TERMINATE intrinsic	DEBUG 2-16, 3-9
specifications	
usage	INTR 2-174
Terminating a process	INTR 4-20
Termtyp 10	INTR 4-20
Termtyp 11	CONV 2-5
Testing mailbox status	CONV 2-5
TEXT Function	INTR 7-10
Time and data intrinsics	UTIL 11-27
Time limit, CPU	INTR 4-42
Time limit, logon	CMND 3-8, 3-10, 4-7
Time limit, TIME= parameter	CMND 3-10
Time Quantum, changing	CMND 3-10, 4-7
Time, how to display	SUPR 6-43
TIMER intrinsic	CMND 2-148, 9-10
specifications	
usage	INTR 2-175
Timer Request List (TRL)	INTR 4-42
TNSL Instruction	SUPR 6-11, 6-36
TOS Instruction	CONV 3-6
Trace stack markers	CONV 3-6
Trailer records, how to enable/disable	DEBUG 2-25, 3-20
Transferring data from an extra data seg.to stk.	CMND 8-11
Transferring data from stk.to an extra data seg.	INTR 8-15
Translating characters from ASCII to EBCDIC	INTR 8-15
Translating characters from EBCDIC to ASCII	INTR 4-13
Transmission mode, text discussion	INTR 4-13
Transmission speed, how to change	CMND 3-23, 3-24
Transmitting program I/O from job/sess. I/O dev.	CMND 9-4
Traps	INTR 4-16
arithmetic	INTR 4-30
commercial instruction	INTR 4-32
Control-Y	INTR 4-38
enabling and disabling	INTR 4-29
extended precision floating-point	INTR 4-31
library	INTR 4-34
standard	INTR 4-31
system	INTR 4-35
Turning logging on and off	OPER 5-25
Types of files	INTR 3-7
Types of procedures	INTR 2-2

U

U command	
definition	DEBUG 2-26
use	DEBUG 3-30
UDC (user-defined command)	CMND 9-11
UDC file, generating a list of	CMND 9-17
UDC file, how to catalog	CMND 9-17
UDC file, using Editor to create	CMND 9-15
UDC files, how to list	CMND 2-131
Undefined-length records	INTR 3-3
Unfreezing segments	DEBUG 2-26, 3-30
Unidentified failures	OPER B-2
Unit numbers	
definition	SUPR 6-5
specifying for	SUPR 6-19, 6-68
Unlabeled magnetic tape file	INTR 3-75
Unloading library procedures	INTR 4-2
UNLOADPROC intrinsic	
specifications	INTR 2-176
usage	INTR 4-3
UNLOCKGLORIN intrinsic	
specifications	INTR 2-177
usage	INTR 6-3
Unlocking files	INTR 3-53
Unlocking global RIN's	INTR 6-3
Unlocking local RIN's	INTR 6-8
UNLOCKLOCRIN intrinsic	
specifications	INTR 2-178
usage	INTR 6-8
UP command	OPER 1-8, 3-66
UPDATE	OPER 4-15, 5-10
Update	SUPR 6-54, 6-65
Updating a file	INTR 3-55
Updating magnetic tape files	INTR 3-73
US capability	SUPR 2-25, 2-31
USE segmenter command	SEGM 1-5, 2-33
User block transfers	INTR 5-22
User Controller Process (UCOP), request queue	SUPR 6-10, 6-36
User interface (system failure)	OPER B-13
User messages	INTR 10-15
User name	CMND 3-5
at logon	CMND 3-5
in a JOB command	CMND 4-5
User pre-defined files	INTR 3-8
User processes	INTR 7-2
User subprogram library	CMND 7-3
User's access mode	INTR 4-10
User's attributes	INTR 4-10
User's stack segment	INTR 8-1
User-defined command (UDC)	CMND 9-11
User-defined command (UDC) file, listing	CMND 2-131
User-defined command errors	CMND 9-23
User-defined command, directory entry	CMND 2-125
User-defined file designator	CMND 6-11

MPE Index

User-defined job control words	INTR 4-47
User-Type Abbreviations	UTIL 8-9
Users	
attributes	SUPR 3-1, 5-9
definition of	SUPR 3-6, 5-4
name of	SUPR 3-6
Purging	SUPR 5-7, 5-8
standard	SUPR 3-3
Using disc space efficiently	INTR 3-4
Using numeric values as parameters	INTR 1-8
USL (user subprogram library)	CMND 7-3
USL File	
changing information block size on	SEGM 3-23
changing size of	SEGM 3-23
changing the directory block size on	SEGM 3-23
creating	SEGM 3-8
designating	SEGM 3-1
initializing buffers for	SEGM 3-23
using intrinsics to manipulate	SEGM 3-22
Utilities	CONV 2-1
Utility functions of intrinsics	INTR 4-1
UV attribute	SUPR 3-3
UV capability assigning to account	SUPR I-16
V	
Variable-length records	INTR 3-3
VINIT	OPER F-1 - F-9
VINIT subsystem	SUPR 6-2, I-6, J-1
VINIT subsystem using	SUPR I-15
Virtual device directory	INTR 3-13
Virtual Memory, changing size of	SUPR 6-41
VISTVS command, example	CMND 2-79
VISTVS command, usage	CMND 2-78
VMOUNT command	OPER 1-8, 3-67
Volume class	SUPR I-27
	CMND 6-2
	OPER 4-21
creating definition	SUPR 4-10, I-2
definition	SUPR I-4
Volume header format	CMND 6-2
Volume set	CMND 6-47
	CMND 6-2
	OPER 4-21, 4-22
creating definition	SUPR 4-10, 5-7, I-1, I-3
definition	SUPR I-4
dismount	CMND 6-2
dismounting	CMND 2-35
list of current users	CMND 6-4
list of users	CMND 2-165
listing information	CMND 6-5
move to another system	CMND 2-77
mounting	SUPR I-23
	CMND 2-80

mounting	CMND 6-4
Volume set/class, creating	CMND 6-3
Volume, master	CMND 6-2
Volumes, disc	
adding	SUPR 6-42, 6-81
deleting	SUPR 6-42, 6-81
labels	SUPR F-4
list	SUPR 6-80
listing	SUPR 6-41, 6-42, 6-80
organization of	SUPR 6-56
private	SUPR 4-9
table	SUPR 4-9
VSUSER command	OPER 1-8, 3-69
example	SUPR I-26, I-28
text discussion	CMND 2-165
usage	CMND 6-5
	CMND 2-165

W

WAIT state	CMND 5-1
WARMSTART	OPER 4-14, 5-6
Warmstart	SUPR 6-54, 6-64
=WARN command	OPER 1-8, 3-70
WELCOME command	OPER 1-8, 3-71
WHO intrinsic	
specifications	INTR 2-179
usage	INTR 4-10
Writing	
a file system error-check procedure	INTR 3-44
on a magnetic tape file	INTR 3-86
output to \$STDLIST	INTR 4-18
output to the Operator's Console	INTR 4-18
records into a file in sequential order	INTR 3-47
records into file in direct-access mode	INTR 3-50
to magnetic tape files	INTR 3-67
user file labels	INTR 3-60

X

X register	
assign value	DEBUG 2-28, 3-17
display	DEBUG 2-13, 3-16
modify	DEBUG 2-21, 3-16
X-OFF	CMND 2-88, 9-5
X-OFF control	INTR 5-21
XARITRAP intrinsic	
specifications	INTR 2-182
usage	INTR 4-32
Xc, after power failure	CMND 3-21, 4-19
XCONTRAP intrinsic	
specifications	INTR 2-184
usage	INTR 4-41

MPE Index

XLIBTRAP intrinsic	
specifications	INTR 2-185
usage	INTR 4-35
XPLAIN Function	UTIL 11-29
XSYSTRAP intrinsic	
specifications	INTR 2-186
usage	INTR 4-36
Z	
Z register	
assign value	DEBUG 2-28, 3-17
display	DEBUG 2-13, 3-16
modify	DEBUG 2-21, 28, 3-16
Z to DB area	INTR 4-27
ZSIZE intrinsic	
specifications	INTR 2-187
usage	INTR 4-27

READER COMMENT SHEET

We welcome your evaluation of this manual. Your comments and suggestions help us improve our publications. Please use additional pages if necessary.

Is this manual technically accurate? Yes No (If no, explain under Comments, below.)

Are the concepts and wording easy to understand? Yes No (If no, explain under Comments, below.)

Is the format of this manual convenient in size, arrangement, and readability? Yes No (If no, explain or suggest improvements under Comments, below.)

Comments:



FROM:

Name _____

Company _____

Address _____

FOLD

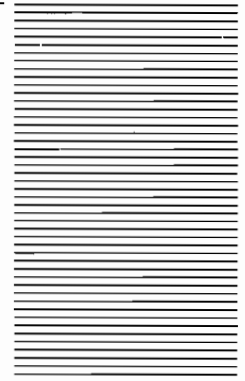
FOLD

FIRST CLASS
PERMIT NO. 1020
SANTA CLARA
CALIFORNIA

BUSINESS REPLY MAIL

No Postage Necessary if Mailed in the United States. Postage will be paid by

**Publications Manager
Hewlett-Packard Company
General Systems Division
5303 Stevens Creek Boulevard
Santa Clara, California 95050**



FOLD

FOLD