

2895B Punched Tape Output

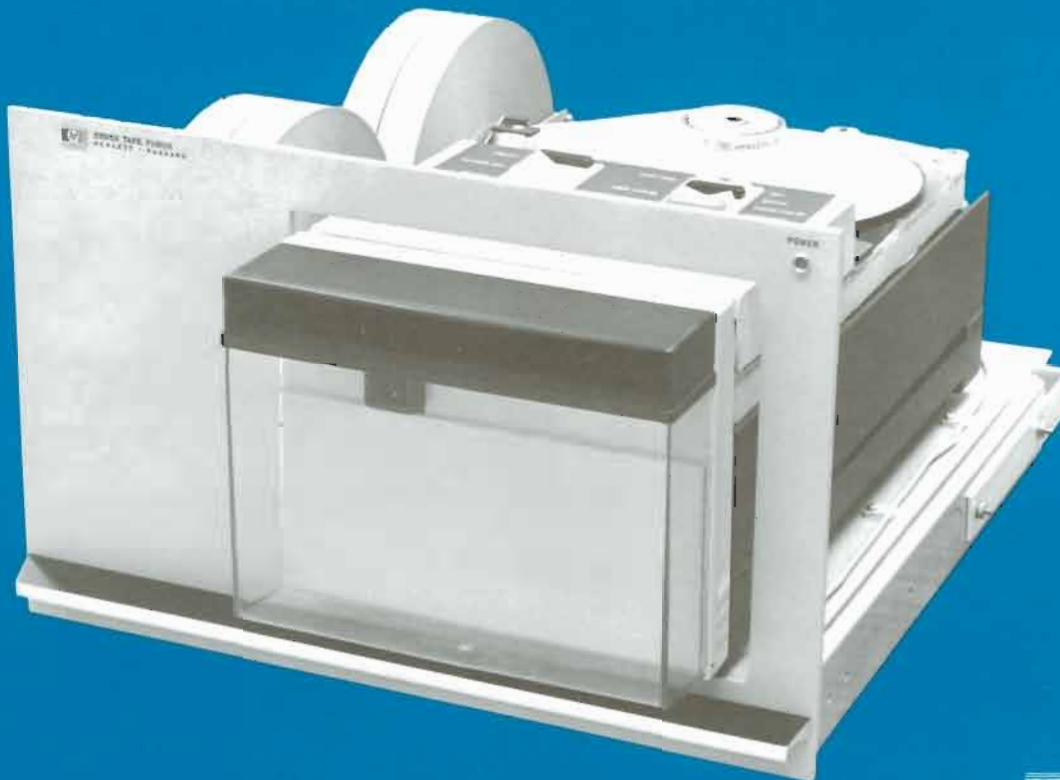
Features

- Compact and quiet-running
- Punches tape at 75 Characters-per-second
- Software supplied for HP Assembly, FORTRAN and ALGOL programming
- Punches both paper tape and mylar tape
- Easily installed with all HP computers

The HP 2895B combines reliability and compactness into a small, self-contained unit. By punching your tapes at 75 characters-per-second, the 2895B provides significant

advantages when compared with ASR-33/35 punching speeds. Intermediate assembly and compilation tapes can be punched and loaded much faster, permitting greatly improved system throughput rates. All necessary hardware and software is supplied with the 2895B.

You can easily add the convenience of 2895B medium-speed punched tape to your HP computer system. Simply rack mount the unit, plug one interface card into the computer and connect the interface cable. The software provided with the interface kit may then be loaded into the computer and the tape punch is ready for immediate use.



HEWLETT  PACKARD

Specifications

PUNCH SPEED

75 characters-per-second, asynchronous

TAPE TYPE

Paper, Mylar or plastic

TAPE WIDTH

Standard 5 level (11/16 inch) and 8 level (1 inch)

TAPE THICKNESS

Paper: 0.003 inch to 0.005 inch (0,08 to 0,13mm)
oiled or dry

Mylar: 0.003 inch to 0.004 inch (0,08 to 0,10mm)

Plastic: 0.003 inch to 0.0045 inch (0,08 to 0,11mm)

POWER REQUIREMENTS

Voltage: 115, 127, 220 or 240 volts (selected by switch)

Frequency: 47.5 to 100Hz

Power Consumption: maximum, 300VA

OPERATING CONTROLS

POWER ON: applies primary ac power

DC ON: applies dc power to internal circuits

TAPE FEED: feeds blank tape through unit

EXT: manually signals computer to request data

FEED HOLES: punches only feed holes as tape passes through unit

CODE HOLES: feeds tape (punches 8-level code and feed hole)

Tape Winding Direction switch: position 1 winds counter-clockwise position 2 winds clockwise

Tape Winding Motor switch: position 1 is On position 2 is Off

ENVIRONMENTAL CONDITIONS

Operating Temperature: 10° to 40°C (50° to 104°F)

Relative Humidity: up to 80% at 40°C (104°F) with no condensation

PHYSICAL DIMENSIONS

10½ inch (266,7mm) panel height, 21-3/16 inches (538,2mm) deep, 16¾ inches (425,5mm) wide

WEIGHT

35 pounds (15,9 kg) including drawer

ORDERING INFORMATION

2100-Based Systems

2895B Tape Punch includes AC Power Cable, Paper Tape (1000 feet per roll), Cardboard take-up bobbins (2 each), Chad box, Chad hose and fittings, and Rack mounting assembly

12597A-005 Interface Kit consisting of: Tape Punch Interface Card, Interconnecting Cable, Test Connector, BCS Tape Punch Driver, SIO Tape Punch Driver Tape and Tape Punch Test (Binary Tape).

Interface Current for Operation with 2100-Series Computers

0.05A (12V); 0.02A (-12V); 0.05A (-2V); 0.75A(4.5V)

HP 3000 Computer System

30105A Punched Tape Subsystem; consists of 75 cps paper tape punch, interface card, interface cable, and all necessary software.

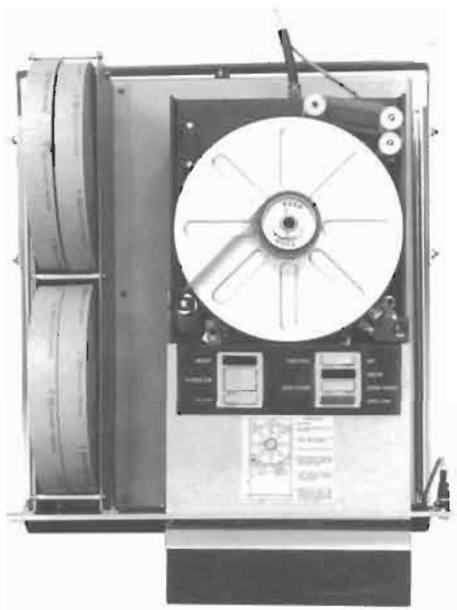
OPERATING SUPPLIES AVAILABLE

Extra Tape (Order by Part No.; appropriate discount for large quantities).

One-inch Paper Tape, 1000 foot roll,

HP Part No. 9280-0063

Mylar Tape, 1-inch, 500 foot roll, HP Part No. 0460-0747



For more information, call your local HP Sales Office or East (201) 265-5000; Midwest (312) 677-0400; South (404) 436-6181; West (213) 877-1282.

Or write: Hewlett-Packard, 1501 Page Mill Road, Palo Alto, California 94304.

In Europe: Post Office Box 85, CH-1217 Meyrin 2, Geneva, Switzerland.

In Japan: YHP, 1-59-1, Yoyogi, Shibuya-Ku, Tokyo, 151.

Printed in U.S.A. 9 '72 5952-4400(22)