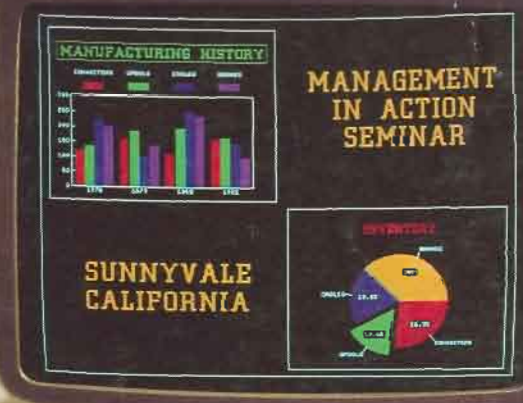


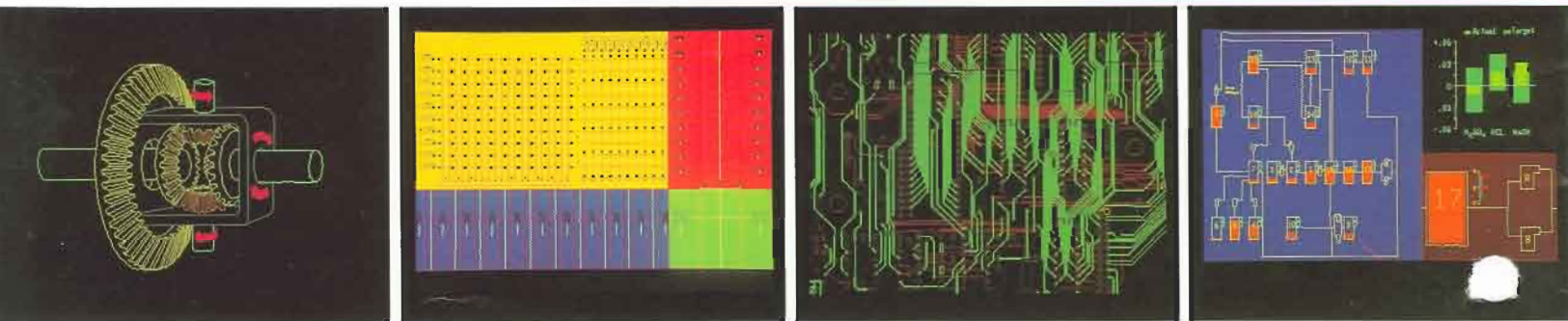
# The HP 2700 Series

 HEWLETT  
PACKARD

High Performance Color Graphics Terminals. . .



# For Your Technical And Business Applications



The HP 2700 is a series of high performance graphics terminals, optimized for Presentation Graphics Design, Computer Aided Engineering and Decision Support Graphics. Four powerful HP 2700 models are available.

- HP 2700 Model 50 High Performance Color Graphics Terminal
- HP 2700 Model 55 Technical Design Terminal
- HP 2700 Model 60 Decision Support Workstation
- HP 2700 Model 65 Presentation Graphics Workstation

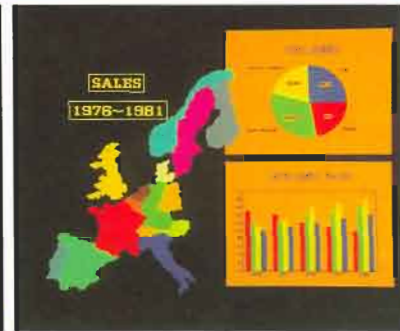
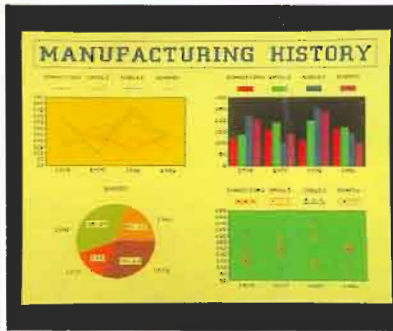
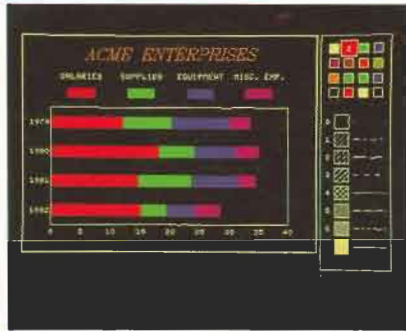
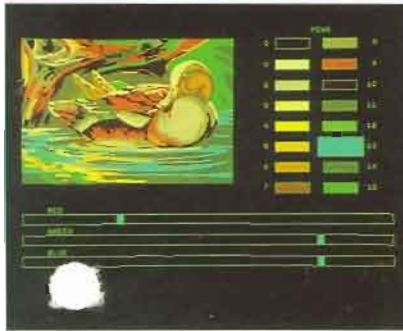
A wide assortment of options, accessories, and peripheral devices ensures a configuration to meet your specific needs.

## A DISTRIBUTED GRAPHICS PROCESSING INNOVATION

The HP 2700 solves the "data-comm bottleneck" associated with a wide range of graphics applications which may require you to interact with the image. Since the terminal performs translations, rotations, and scaling, you can see the modifications taking place as they are done. The HP 2700 removes the image recalculation burden from the computer, and provides you with immediate results.

Another powerful capability of the HP 2700 is that of local object storage. In an engineering application, for example, you may wish to define and store commonly used graphics objects such as electronic symbols or components. Once stored, you merely specify the name of the object and where it is to be placed. Costs associated with the CPU calculating and retransmitting all the vectors associated with each occurrence of the object are significantly reduced.





### COMPLEX PICTURE STORAGE

With  $32767 \times 32767$  addressable points, the HP 2700 can be used to store more complex pictures than can be viewed in detail at one time. Local power allows you to interactively zoom and pan on any portion of this large addressable space, looking at the entire space at low resolution or small portions of it at high resolution.

Several areas of this large addressable space may be viewed simultaneously. For example, in a chemical process control application, you may wish to focus on a particular chemical tank while still keeping an eye on the entire process. The HP 2700 can do this with only a few simple commands sent from the host computer.

### HIGH QUALITY COLOR DISPLAY

Color selection is easy with the HP 2700. There are more than 4000 colors to choose from and any palette of 16 colors can be displayed at once. Convenient thumbwheels allow you to mix various amounts of red, blue, and green right on the screen to create the palette that best suits your application. The HP 2700 can store 255 palettes in memory. Once stored, any palette can be quickly recalled for use or modification by a few simple keystrokes.

### LOCAL SOFTWARE FOR EASY PRESENTATION GRAPHICS

Two local software packages are available for use with the HP 2700 series terminals, providing presentation graphics design capability independent of host computer control.

AUTO PLOT/2700 software brings new meaning to the term ease-of-use. In addition to the HP pioneered "menu-driven" approach to business graphics, a truly interactive user interface is provided. For instance, to change the color of a bar, the location of a label, the font of a character, or the shade of a pie, simply point with the graphics cursor to the object to be modified. Then point to the new choice of color, location, font, or shade and the change happens immediately.

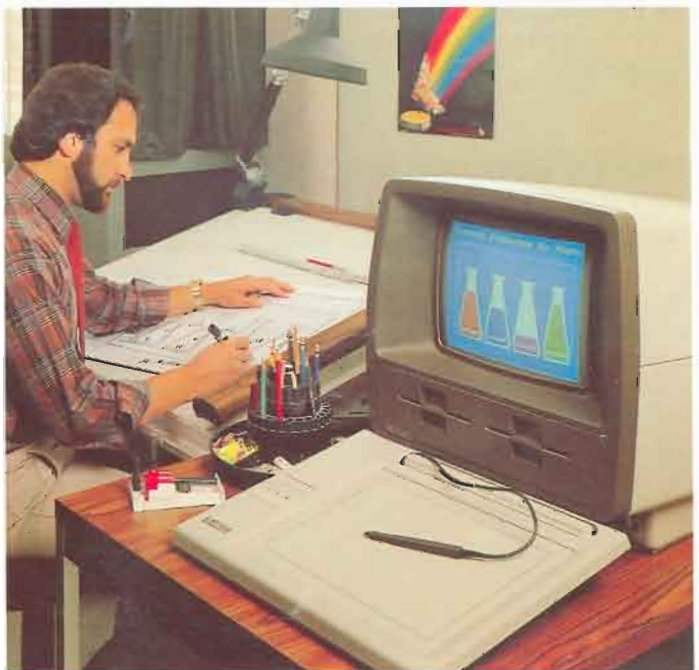
Chart data can be entered from the keyboard or downloaded from a computer data base. By having only one data menu for all chart types the same data can be viewed in pie, bar or line chart form, making it easy to find the chart type that best presents the data.

Scattergrams, combined line and bar charts, log charts, text slides, chart scaling and the ability to combine multiple charts on a page are just a few of the many capabilities AUTO PLOT/2700 provides.

PAINTBRUSH/2700 software does for the chart-maker what word processing has done for the typist. With the aid of the 13273T Data Tablet, PAINTBRUSH/2700 provides for freehand sketching, aided drawing, and picture editing. Once an object (such as a company logo) has been created, it can be translated, scaled, rotated and stored for use again. Libraries of objects can be developed so that every chart you make can have a customized, standard, and professional look.

## CONFIGURABLE TO YOUR APPLICATION

In addition to the four HP 2700 series models, the HP 2700's modular architecture and wide range of options and peripherals make it configurable to many applications. Standard features include RS232 compatible (RS423) or RS422 host communications, RS232 printer or plotter communications, 32K bytes of vector memory, and one set of raster planes. Optional features include integrated dual mini-disc drives, additional peripheral interfaces (for plotters, printers, cameras, and tablet), local application software, additional vector and application memory, and a second set of raster planes.



Corporate Headquarters:  
Hewlett-Packard  
3000 Hanover Street  
Palo Alto, CA 94304 USA

European Headquarters:  
Hewlett-Packard S.A.  
7 rue du Bois-du-Lan  
P.O. Box  
CH-1217 MEYRIN 2  
Geneva, Switzerland

Intercontinental Headquarters:  
Hewlett-Packard  
3495 Deer Creek Rd.  
Palo Alto, CA 94304 USA

