

The HP 2635A is a dot matrix hard copy terminal featuring high throughput and a wide range of user-definable printing functions. Utilizing Hewlett-Packard's advanced SOS microprocessor technology, the HP 2635A can serve either as the HP 3000 system console or as an optional terminal.

**Features**

- High throughput
- High resolution dot matrix characters
- 128 USASCII character set
- Long life print head
- Cartridge ribbon
- Single or multipart forms
- 8 channel fixed VFC
- Special user features
  - variable horizontal pitch
  - variable vertical pitch
  - horizontal tabulation
  - display functions
  - self test
  - paper out detection
  - auto line feed
  - auto-underline
  - selectable view mode
- Typewriter style keyboard
- Numeric keypad
- RS232C interface

**High throughput**

The HP 2635A has a print speed of 180 characters per second. Print speed, however, is only one of several factors which affect throughput. The HP 2635A optimizes throughput by printing bi-directionally, suppressing leading and trailing blanks, skipping over embedded blanks, and returning the carriage at high speed. The HP 2635A utilizes the newly developed HP CMOS/SOS micro-processor to optimize printing functions,

data manipulation, and other control functions.

**High resolution dot matrix**

The HP 2635A utilizes a high resolution seven column by nine row dot matrix character cell for crisp, clear character formation. The nine high matrix allows true descenders, commas, semi-colons, and underlining. Dot matrix is especially well suited for multipart forms; since each dot is formed with equal intensity, the sixth copy has surprisingly good character resolution.

**128 USASCII character set**

Most terminals will print the 64 USASCII set (upper case alphabet, numbers and symbols), a few will print the 96 USASCII set (upper and lower case alphabet, numbers and symbols), but the HP 2635A is unique in allowing the user to print the entire 128 USASCII character set (upper and lower case alphabet, numbers, symbols, and control codes).

**Long life print head**

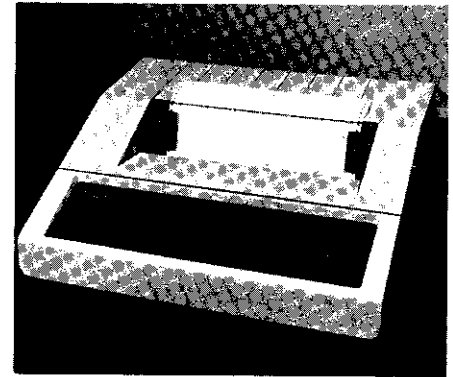
The nine-wire print head is rated at 130 million characters, making replacement an infrequent task. When replacement is required, this self-aligning head is easily replaced using the hex key supplied with the terminal.

**Cartridge ribbon**

The cartridge ribbon has a long life of more than 10 million characters (about 3 months of normal use). This is made possible by an internal mobius loop design that permits the use of the entire ribbon area. When a ribbon change is necessary, it is a quick, simple and clean task.

**Single or multipart forms**

Up to 6 part forms (up to 43mm thick) may be accepted by the HP 2635A. Due



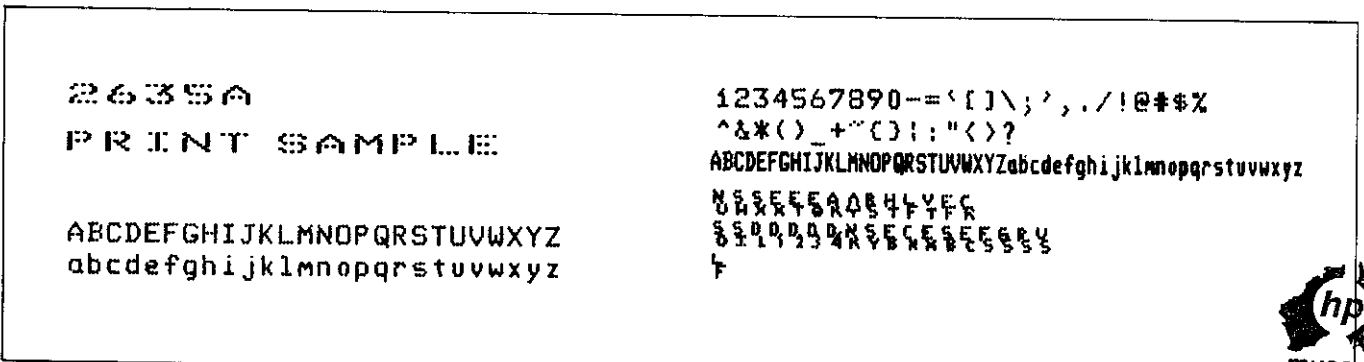
to a unique head design, adjustment for forms thickness variations between .08mm (.003") and 43mm (.017") is usually not required. A lever adjustment on the print head carriage is provided to allow optimization of print quality on various forms.

**8 Channel fixed VFC**

Vertical forms control is provided through an eight channel fixed electronic VFC. There is no paper tape or paper tape reader to worry about, the VFC is located in read only memory (ROM). The eight channels provide the following forms advance capability:

	Line # @ 6 LPI
• Channel 1	top of next page 0
• Channel 2	bottom of current page 59
• Channel 3	single space 0, 1, 2, ... 59
• Channel 4	next double space 0, 2, 4, ... 58
• Channel 5	next triple space 0, 3, 6, ... 57
• Channel 6	next half page 0, 30
• Channel 7	next quarter page 0, 15, 30, 45
• Channel 8	next tenth space 0, 10, 20, ... 50

Note: "Page" is defined to be 11 inches. "Space" is defined to be 1/6 inch, unless 8 lpi mode is being used, in which case "space" is defined as 1/8 inch.



### Special user features

By entering at the keyboard specific keystrokes of control sequences or embedding these sequences in the data stream, the user can customize 2635A output.

- Horizontal printing in any of three modes: compressed (16.7 characters per inch); normal (10 cpi); expanded (5 cpi).  
Normal mode is the standard on most terminals and will provide 136 characters per line on 14-7/8 inch wide paper or saving paper (132 characters per line on 8-1/2 inch wide paper). Expanded mode creates characters which are useful for titles and headings. The three different modes may be intermixed on a single line.
- Auto-underlining in all print modes provides emphasis to key words and phrases in your output.
- Vertical spacing is variable at vertical pitches of 1, 2, 3, 4, 6, 8, or 12 lines per inch.
- A view mode allows the user to see the last character printed by moving the print head to the right after a keyboard entry.
- In addition to control sequence operation, certain special features may also be triggered by setting buttons or switches on the 2635A.
- Horizontal tabs may be set, cleared, and accessed in any of 227 print positions.

- In display functions mode, embedded control sequences are printed rather than executed. Carriage return (control M), on-line (escape M), off-line (escape O), and display functions off (escape Z) are exceptions; they are displayed and executed.

### Specifications

#### Reliability

An extensive reliability testing program was implemented on the 2630 family, in which 330 million characters were printed on each of 35 machines, for a total of 11.5 billion characters. The preliminary results of this test show that the mean number of printed characters between failures, (MCBF) excluding print head and ribbons, exceeds 250 million.

The 2635A is recommended for 1 million characters per day, resulting in a Mean Time Between Failures (MTBF) of approximately 1 year. Basic monthly maintenance charges are based on this level of usage.

#### RS232C interface

The standard interface is an EIA standard RS232C asynchronous interface for use with 103 type modems. The user may optionally add 202 type modem control to the RS232C interface.  
Data Rate: 110, 150, 300, 1200, 2400 baud and external; switch selectable; (110 selects two stop bits; external allows baud rates to 9600.)

Transmission Mode: full duplex  
Parity: odd, even, or none; switch selectable  
Connector: 25 position, similar to Cinch DBM (D subminiature socket)

#### Power requirements

Input voltage: 100, 120, 220, 240 volts  
AC (+10% to 12%) selectable from rear panel  
48-62 Hz  
Power consumption: 140 VA max non-printing  
265 VA max printing

#### Environmental conditions

Temperature, free space ambient:  
-40° to 75°C (-40° to 167°F) non-operating  
0° to 55°C (32° to 131°F) operating  
Humidity: 5% to 95% RH (non-condensing) excluding media

#### Vibration and shock

Vibration: .38mm (.015") pp. 5-55Hz, 3 axes  
Shock: 30G, 11ms, 1/2 sine shock pulse.  
Also type tested to qualify for normal shipping and handling in original shipping container.

#### Physical specifications

595mm (23.1")D x 640mm (25.2")W x 215mm (8.5")H  
23.5 kg (56 lb) net weight (without pedestal)  
31 kg (72 lb) ship. weight (without pedestal)