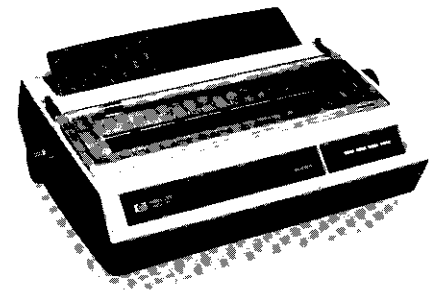


# HP 2602A Daisywheel Printer

 HEWLETT  
PACKARD



Hewlett-Packard offers a range of word processing printers and accessories with excellent print quality and numerous user-convenience features. You may choose the 25-cps HP 2602A for single-user or low-volume printing applications. The 40-cps HP 2601A fits shared printing or higher volume printing applications. Both deliver attractive, accurate letters, memoranda, multipart forms, and reports.

## Printing Versatility

Whether used as a general-purpose letter-quality printer for an HP personal computer or as a word processing printer in an HP 3000 Integrated Office, the HP 2602A Daisywheel Printer produces high-quality printing on all your printed material. You can print on single sheets or, with the optional forms tractors, on continuous forms of widths up to 15.2 inches.

When used with HP word processing software, the HP 2602A allows you to use print enhancements like bold, shadow, underlining, and proportional spacing. A comprehensive selection of printwheels in many languages and typescripts assures that you obtain output as you require. The result is customized printing that is unachievable by most electric typewriters.

## Easy to Use

Set up is easy. Its drop-in printwheels and convenient cartridge ribbons make day-to-day usage a breeze. To change the printwheel, you simply drop the printwheel into an envelope-like enclosure. The wheel is automatically aligned, and encoded language and pitch information is automatically transferred from the printwheel to the printer.

### Features:

- 25-cps letter-quality output
- Comprehensive selection of printwheels
- Print enhancements like proportional spacing, bold, shadow, and underlining
- Drop-in printwheels
- Tractor feed accessory
- RS-232 standard interface with optional HP-IB interface

### Benefits and Advantages:

You get attractive, accurate letters, memoranda, multipart forms, and reports.

Assures you obtain output as you require in a variety of typescripts and languages, in 10- and 12-pitch and proportional spacing.

Allows you to highlight and customize your printed matter.

Allows you to make changes in typescripts and print size without removing the ribbon. In seconds, you can resume printing.

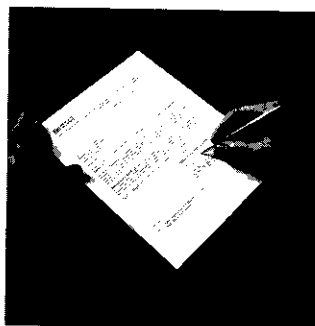
Adds the flexibility of continuous and multipart forms as needed.

Easy connection with many HP systems.

### Applications

- The HP 2602A is ideal for personal and small business computer systems that require a low-to-moderate volume of high quality printing. It is well suited for word processing applications and general purpose printing as a single-user workstation printer.

### Software Support



Because of its fine print quality and accurate print head positioning, your HP daisywheel printer allows you to perform several printing enhancements. You can do bold and shadow print, proportional spacing, right justification, and underlining through your word processing or text editing software packages.

The HP 2602A is supported on these popular software packages:

WORD80 on the HP86 and HP87, WORDSTAR™ for Series 100, Context™ MBA on the Model 16 of the Series 200, and HPWORD on the HP3000.

## Specifications

### PRINT SPEED

25 characters per second (peak speed)  
Bidirectional, optimized path

### CHARACTER STRUCTURE

Full font, 98-character daisywheels

### PRINTING FORMAT

Print pitch (characters per inch)

12.0—Compressed

10.0—Normal

Proportional Spacing

Line length (characters per line)

158—Compressed

132—Normal

Print line: 335.3 mm (13.2 inches)

Spacing

1/120 inch horizontal character spacing (minimum)

Programmable vertical line spacing

(1/48" minimum)

### PAPER HANDLING

Friction feed platen, standard

Continuous forms tractor accessory

### FORMS REQUIREMENTS

Paper widths

Friction platen: 387.4 mm (15.2 inches)

Forms tractor maximum full width: 387.4 mm (15.2 inches), 374.7 mm (14.75 inches) between holes

Forms tractor minimum width: 82.55 mm (3.25 inches), 69.85 mm (2.75 inches) between holes

### Paper Thickness

Up to .61 mm (.024 inch) maximum overall thickness, typically 5 parts

### CONTROLS AND INDICATORS

External Control Panel:

Reset

Pause

Line Feed

Form Feed

Power-on Indicator

Under Cover Mode Switches:

Single Strike Ribbon Mode

Page Size

Self Test

DCI/DC3

Parity

Baud Rate

In the HP-IB version, the DCI/DC3, parity, and baud rate switches are used for HP-IB addressing.

### POWER REQUIREMENTS

Input voltage 120VAC ( $\pm 10\%$ ), or 220VAC

( $+12\%/ -10\%$ ), or 240VAC ( $+12\%/ -10\%$ ). All

voltages 49.5-61 Hz

Power consumption 90W average, 120W maximum

### INTERFACES

RS-232C (standard)

Operates at speeds of 110, 300, and 1200 baud

with data flow maintained by X-on/X-off, ENQ/ACK,

or printer busy line protocol.

### ENVIRONMENTAL CONDITIONS

Temperature

+7°C to +41°C (+45°F to +105°F) operating

-29°C to +57°C (-20°F to +135°F) storage

Humidity

10% to 80% non-condensing, operating; 9% to 90%, storage

Multipart forms and card stock should be tested for satisfactory feeding, registration, and print quality. If the printer is to be operated under conditions approaching the extremes of the humidity specification, all media should be tested to insure proper handling and stacking.

### PHYSICAL SPECIFICATIONS

451 mm (17.75") D x 616 mm (24.25") W x 235 mm

(9.25") H

23 kg (50 lbs.) net weight including shipping container

### PRODUCT CERTIFICATIONS

Meets UL, CSA and VDE 0730, FCC Level B, VDE 0871

Level B and VDE 0804 requirements.

Any questions concerning regulatory agency compliance should be directed to your local HP sales office.

### PRINTING DUTY CYCLE

Printer usage should not exceed 50 pages per day.

MTBF: 4000 hours

## Ordering Information

### HP 2602A DAISYWHEEL PRINTER

(120V, 49.5-61 Hz standard)

Standard unit includes:

RS-232C interface, power cord, one 10-pitch 98-character plastic daisywheel, multistrike mylar ribbon cartridge, operator's manual.

Options

-015 220V, 49.5-61 Hz

-017 240V, 49.5-61 Hz

-046 HP-IB interface

### OPTION AND CABLE INFORMATION

All cables must be ordered separately.

SYSTEM	INTERFACE	CABLE
HP 3000, ATC or ADCC	Standard	13242N
HP 250	Standard	13242N
HP Series 200 Model 16 (HP 9816)	HP-IB	10833
HP Series 100 Models 120, 125, 150	Standard	13242G
HP Series 80	HP-IB	10833
HP 262X Terminals	Standard	13242G
HP 2647F	HP-IB	10833

## Supplies and Accessories

Most supplies can be ordered via the HP Computer Users Catalog. For immediate price and availability information, in the U.S. dial, toll free, 800-538-8787. In California, Alaska, and Hawaii, call 408-738-4133; West Germany, 07031-142829 or 223133; the United Kingdom, 0734-792868 or 792959; The Netherlands 020-470639.

### Starter Kits

Each kit includes 13 multistrike ribbons, four printwheels, and one printwheel album.

92265A USASCII

92265B United Kingdom

92265C German

92265D French

### Supplies and Accessories

26020A Continuous Forms Tractors

92151H Box of 12 Multistrike Ribbon Cartridges

92167V Printwheel Storage Album

92177A Sound Absorbing pad

92177D Sound Enclosure

		ITF (HP 150) Keyboard Compatible	Older Style Keyboard (HP 262X, 264X, 120, 125) Compatible
<b>98-Character Plastic Printwheels</b>			
92262A	USASCII Courier 10	x	x
92262B	USASCII Prestige Pica 10	x	x
92262D	USASCII Courier 12	x	x
92262E	USASCII Prestige Elite 2	x	x
92262F	USASCII Letter Gothic 12	x	x
92262G	USASCII Bold PS†	x	x
92263A	UK Courier 10	x	x
92263B	UK Prestige Pica 10	x	x
92263C	UK Prestige Elite 12	x	x
92263D	UK Courier 12	x	x
92263E	UK Bold PS†	x	x
92263F	German Pica 10	x	x
92263G	German Letter Gothic 12	x	x
92263H	German Square PS†	x	x
92263J	French Courier 10	x	x
92263K	French Prestige Elite 12	x	x
92263L	French Bold PS†	x	x
92263M	Swedish/Finnish Courier 10	x	x
92263N	Swedish/Finnish Bold PS†	x	x
92263P	Norsk Courier 10	x	x
92263Q	Norsk Bold PS†	x	x
92263R	Spanish Courier 10	x	x
92263S	Spanish Bold PS	x	x
92263T	Italian Courier 10	x	x
92263U	Italian Bold PS†	x	x
92264A*	French Canadian Courier 10	x	
92264B*	Danish Courier 10	x	
92264C*	Norwegian Courier 10	x	
92264E*	Swiss Courier 10	x	
92264F*	European Spanish Courier 10	x	
92264G*	Latin Spanish Courier 10	x	
92264H*	Dutch Courier 10	x	

†Proportional spaced printwheels are designed for use with HPWORD only.

\*New offering, check HP Computer Supplies for availability.

For more information, call your local HP Sales Office or Regional Office: East (301) 948-6370 • Midwest (312) 255-9800 • South (404) 955-1500 • West (213) 877-1281. Or write to Hewlett-Packard: U.S.A. — 1820 Embarcadero Road, Palo Alto, CA 94303. Europe: P.O. Box 999, 1180 AZ Amstelveen, The Netherlands. Canada: 6877 Goreway Drive, Mississauga, L4V 1M8, Ontario, Japan: YHP Ltd., Ohashi 29-21 Takaido-Higashi 3-chome, Suginami-ku, Tokyo 168.