

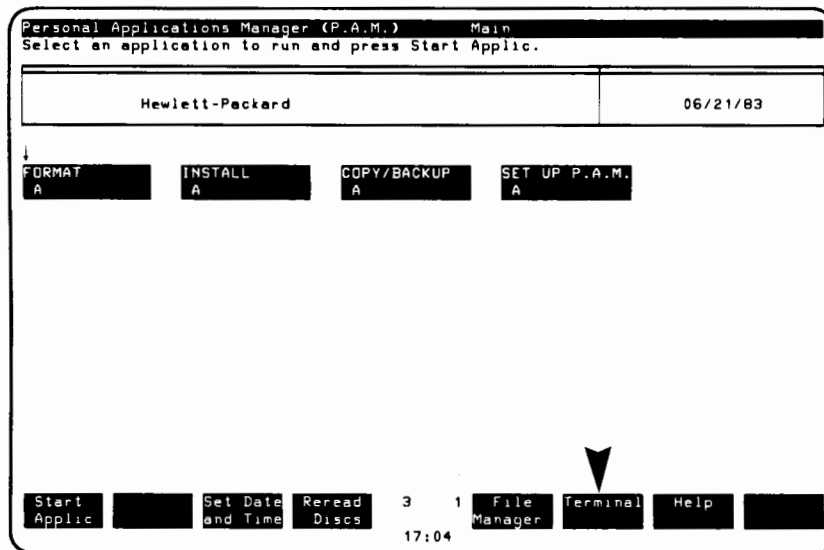
APPLICATION NOTE

Using the HP2225A Printer with the HP150/9133

An HP150/9133 system using 2333 or 2343 series ROMs may randomly experience system loading failures when used with the HP2225A printer. This problem is easily solved by reconfiguring the HP150.

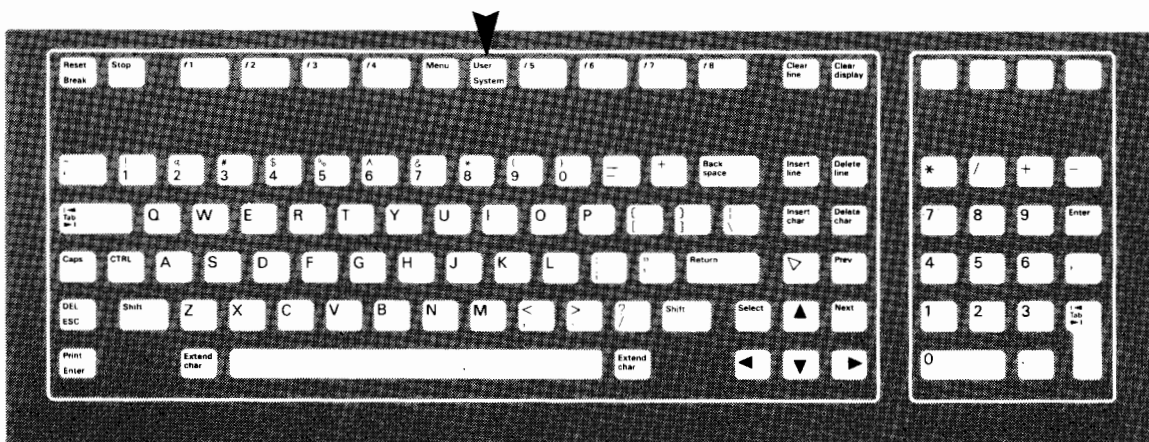
The first step toward solving this problem is to find out if your HP150 is using 2333 or 2343 series ROMs:

1. Install the operating system as instructed in the HP150 Owner's Guide. The P.A.M. (Personal Applications Manager) screen will appear.
2. Touch "Terminal" on the screen.



Note: Don't be alarmed if your screen format is different.

3. Press the USER SYSTEM key on the keyboard.



HP Computer Museum
www.hpmuseum.net

For research and education purposes only.

4. Touch "service keys" on the screen.



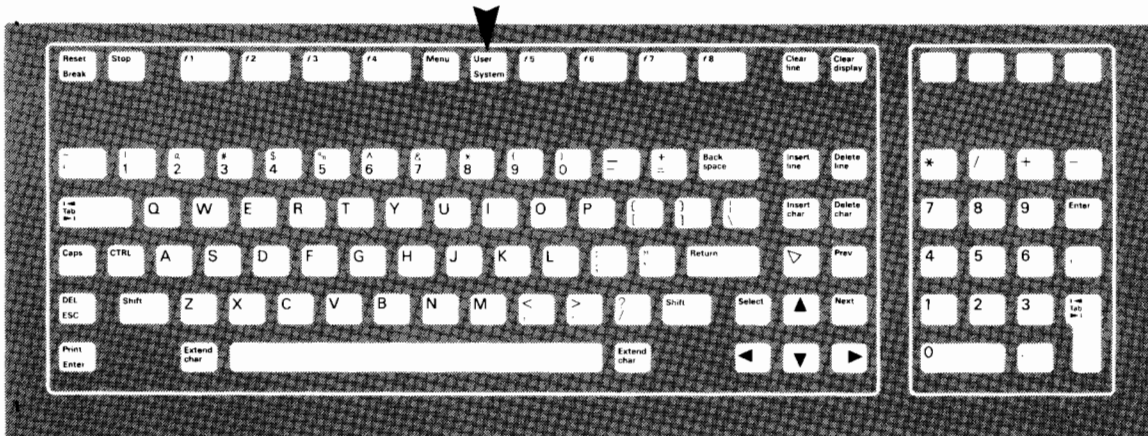
5. Touch IDENTIFY ROMS. A series of numbers will appear on the screen.



If any of these number-series end in 2333 or 2343, the HP150/9133 system must be reconfigured.

Reconfiguring the HP150:

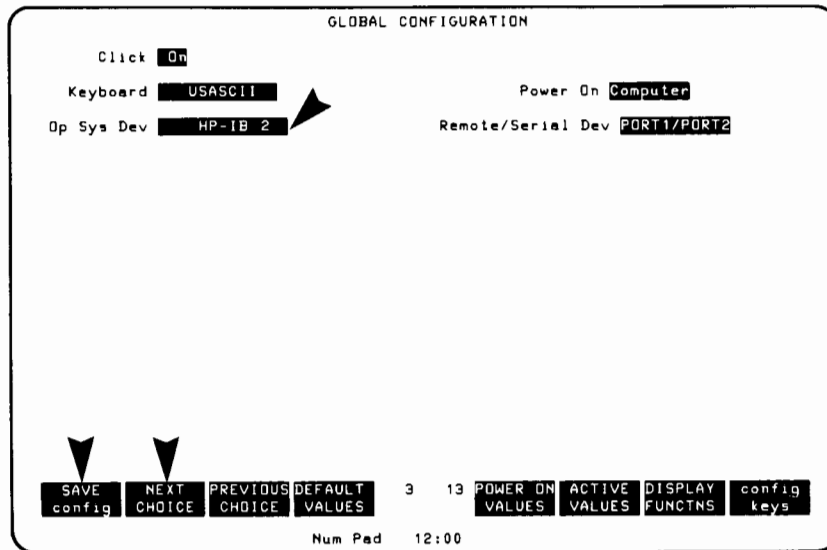
1. Press the USER SYSTEM key.



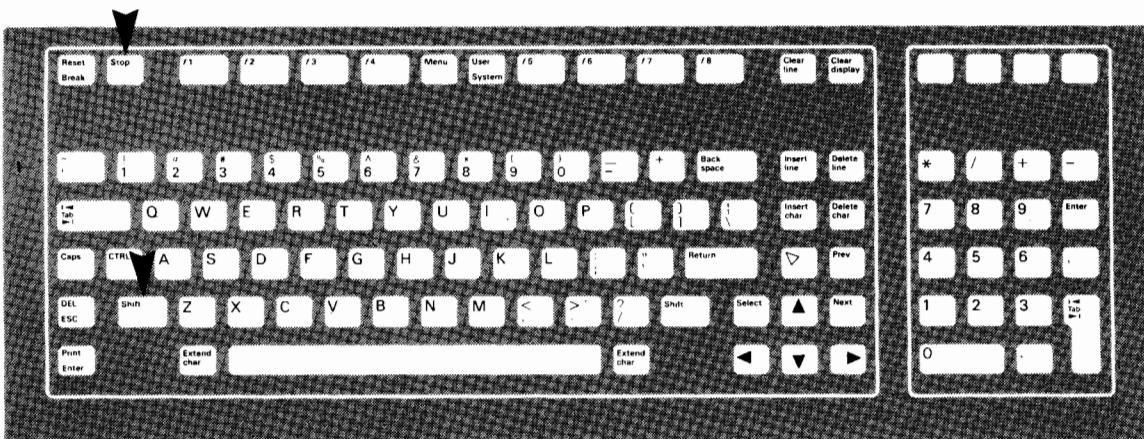
2. Touch "config keys", then "global config" when it appears. The GLOBAL CONFIGURATION menu will appear.



3. Locate "Op Sys Dev" on the left side of the GLOBAL CONFIGURATION menu, and touch the highlighted "HP-IB" field. A blinking cursor will appear within the HP-IB field. Touch NEXT CHOICE until "2" appears to the right of the highlighted "HP-IB", then touch SAVE config.

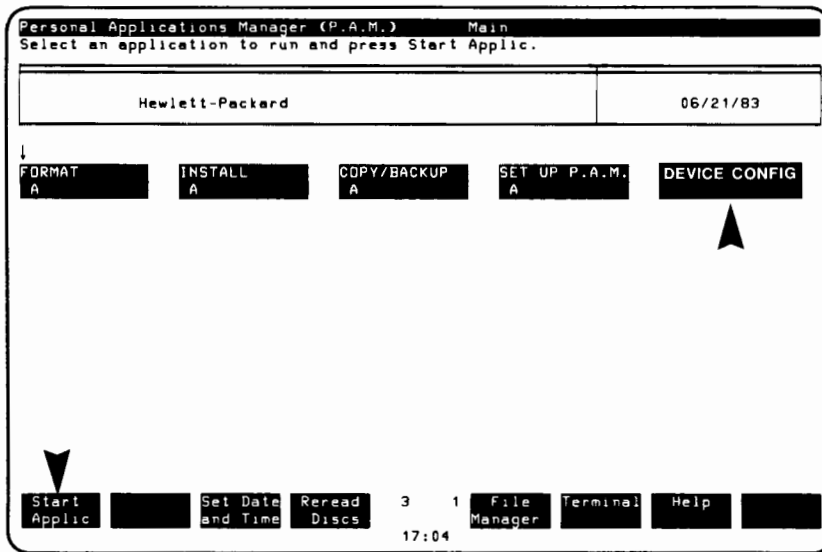


Next, press the SHIFT and STOP KEYS ON THE KEYBOARD SIMULTANEOUSLY! You have exited the terminal mode.



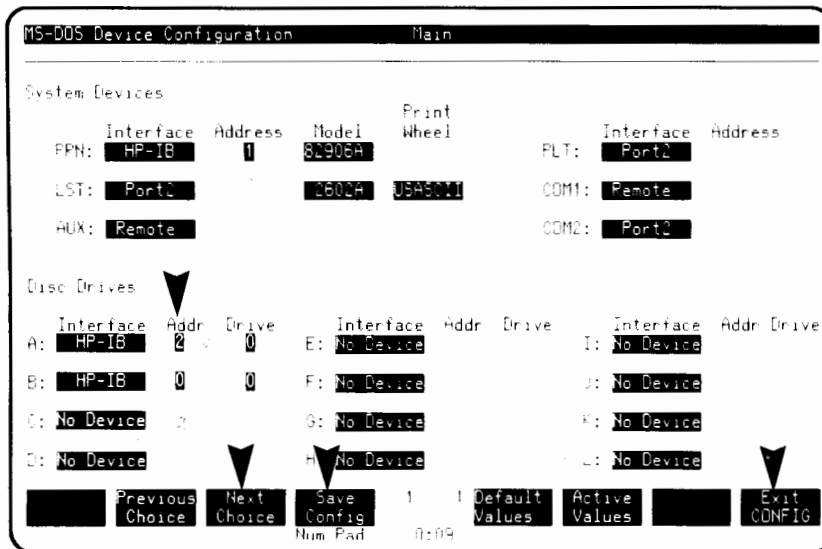
NOTE: IF "NEXT CHOICE" IS NOT PRECISELY TOUCHED, A CURSOR WILL APPEAR ABOVE IT AND FURTHER ATTEMPTS TO ACTIVATE THE "NEXT CHOICE" FIELD WILL FAIL. REPEAT STEP #2 ABOVE, RELOCATING THE CURSOR WITHIN THE HIGHLIGHTED HP-IB FIELD, THEN CAREFULLY TOUCH NEXT CHOICE AGAIN.

- A new P.A.M. screen will appear. Run the device configuration application by touching the "DEVICE CONFIG ___" field, then "Start Applic".



Note: Don't be alarmed if your screen format is different.

- When the Device Configuration menu appears, under the DISC DRIVES heading and to the right of "A:" touch the highlighted box directly under "Addr". Touch **Next Choice** until "2" appears in the box. Next, locate and touch the highlighted box under "Addr" to the right of "B:" Touch **Next Choice** until "0" appears in the box. Touch "Save Config", then "Exit CONFIG".

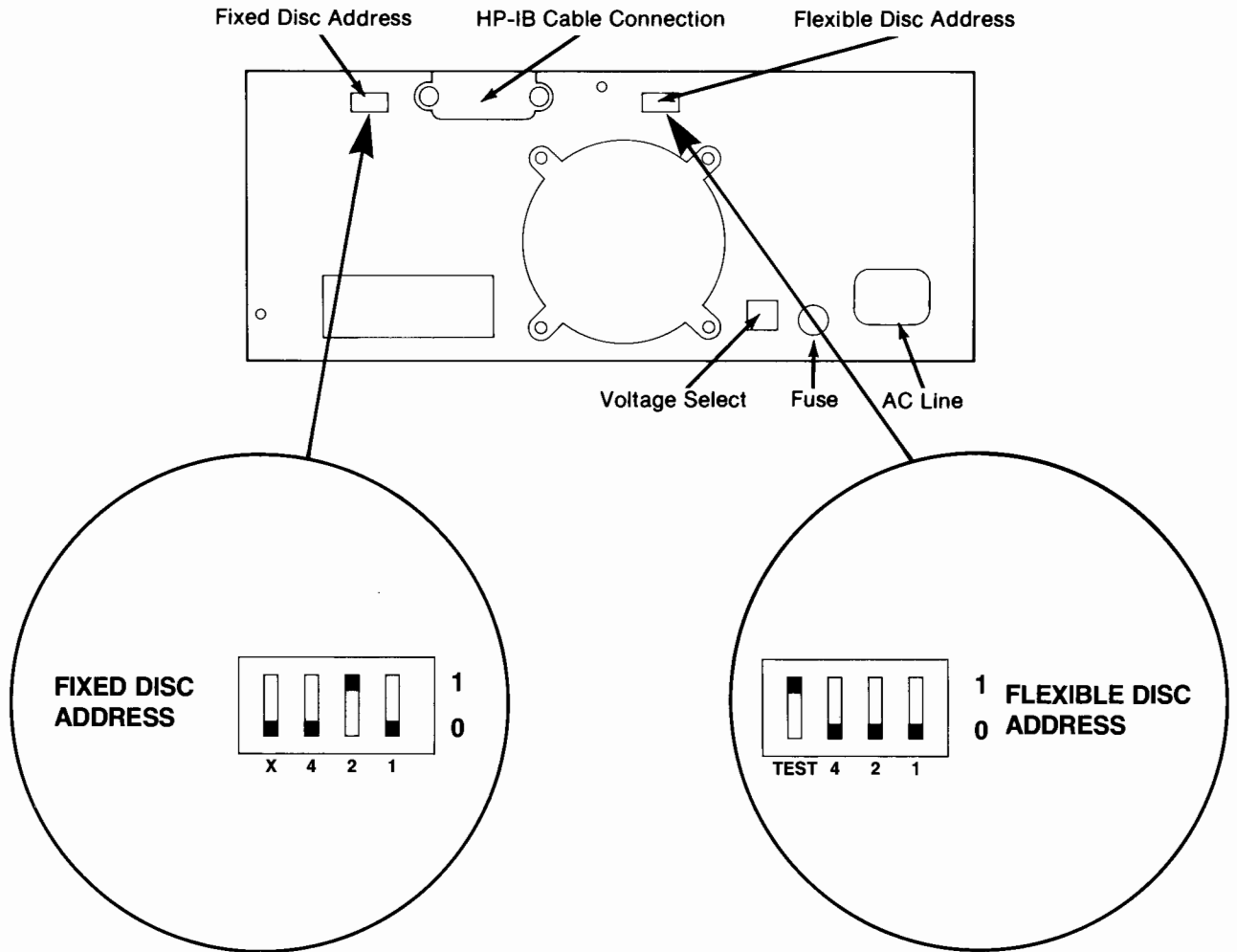


Next, switches on your disk drive must be reset.



9133XV:

1. Turn off your system.
2. Set the address switches on the back of the 9133 as follows: Fixed Disk Address = 2; Flexible Disk address = 0.



YOU ARE NOW READY TO USE THE HP150 WITH 9133 DISC DRIVE AND HP 2225A PRINTER TOGETHER!

