

HP 9000 Series 200 Software . . . Solutions Waiting to Happen

Introduction

Powerful computers plus powerful software equals powerful results.

Nowhere is this "equation" more true than with the Series 200 engineering workstations from Hewlett-Packard. Based on the MC68000 microprocessor from Motorola, the Series 200 computers convey all the power and resourcefulness of 16-bit computing while keeping size to a minimum — in fact, the Model 216 takes up little more space than an in-basket.

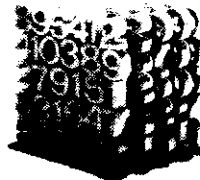
To this powerful hardware, HP adds Series 200 software. The result is a full range of solutions to your technical and management problems. Whether you're considering writing memos, interacting with an array of instruments or designing complex electronic circuits, HP Series 200 software can help you achieve your goals with a minimum of effort and duplication; the full experience of others, both within HP and outside, is at your disposal.

Not only will HP's Series 200 software run "stand-alone", but all will operate on the Shared Resource Management system, a network of Series 200 and other HP computers designed to share disc files, plotters and printers, thus making communications easier and resulting in tremendous cost savings.

In addition, our HP PLUS program is working with over 100 independent software suppliers to bring you even more solutions for the Series 200: word processing, spreadsheet planning aids, data base management, data communications, graphics, utilities, languages and much more.

Additional information on configuration and other technical matters can be obtained from your local HP sales representative.

Computation and Analysis



HP Numerical Analysis Library (HP 98821A)

This software package contains a large number of numerical analysis techniques written in the form of subroutines which may be added to application programs. Simple drivers for the subroutines are also included so that they may be used as stand-alone programs. Routines include: root finders, integration, ordinary differential equations, linear algebraic systems, Eigen Analysis, interpolation, and Fourier Analysis.

HP Statistics Library/200 (HP 98820A)

The HP Statistics Library/200 is an economical set of routines for data exploration, analysis and graphical display. It features a unified data base and easy-to-use graphics. HP Statistics Library/200 is a multiple pack containing:

Basic Statistics and Data Manipulation — provides comprehensive summary statistics as well as routines for entering, editing, naming, recoding, sorting, storing, transforming, and listing data for statistical analysis by other programs.

General Statistics — contains parametric and non-parametric tests for single sample, paired sample, two independent sample and multiple sample data.

Statistical Graphics — contains nine routines for plotting statistical data: time plot, histogram, probability plots, x-y scatter plot, semi-log plot, log-log plot, xyz plot, and Andrews plot.



Regression Analysis — performs multiple linear regression, variable selection methods using stepwise, forward, backward or manual procedures, polynomial regression and residual analysis. It uses Marquardt's Method to fit non-linear models using up to ten parameters, and allows residual analysis.

Monte Carlo Simulation — includes advanced random number generators, random deviate generators for various statistical distributions and a series of tests which aid in the evaluation of simulation studies.

Analysis of Variance — a collection of routines for the analysis of statistically designed experiments. This pack includes procedures for factorial (up to four factors), nested, split-plot, one-way, two-way unbalanced and one-way covariate designs.

Principal Components and Factor Analysis — has routines for multivariate analysis, including principal components, factor extraction (principal axes or maximum likelihood method), factor rotations (orthogonal or oblique), and plots of case scores.

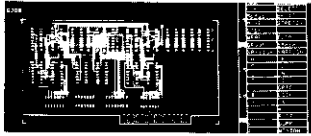
HP Statistics Library/200, Part I (HP 98820B)

A basic library of general statistics, Part I consists of Basic Statistics and Data Manipulation, General Statistics, Statistical Graphics and Regression Analysis.

HP Statistics Library/200, Part II (HP 98820C)

An advanced library of general statistics, Part II consists of Monte Carlo Simulation, Analysis of Variance, and Principal Components and Factor Analysis. Requires Part I to run.

Computer-Aided Engineering (CAE)



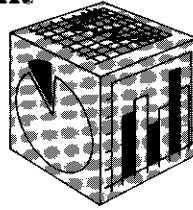
HP EGS/200 (HP 98305A)*

HP Engineering Graphics System/200 (HP EGS/200) is designed for the Series 200 computers and peripherals to comprise a complete engineering drawing system. It is ideal for those who have little knowledge of computers, but can also be customized for the more experienced user. HP EGS/200 allows you to process many commonly-used engineering drawings, making it a perfect tool for design teams with diverse drawing needs.

HP EGS/200 uses a central Graphics Editor plus four distinct 'personalities' geared to particular types of drawings. These personalities are General Drawing, for the novice user in preparing artwork; Technical Drawing, for generating 2-D mechanical drawings; Electrical Schematic, for drawing circuit schematics; and Printed Circuit Board, for preparing artwork for printed circuit boards. The HP EGS/200 system can also output material or connection lists from a drawing.

* Will not run on Models 217 and 237.

Management



HP Graphics Presentations/200 (HP 98815A)

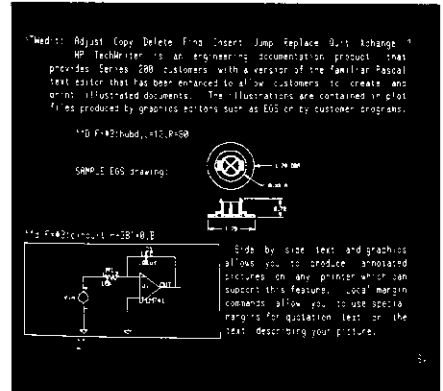
Overhead slides of bar charts, pie charts, line charts and text material can now be created easily and quickly using a Series 200 computer, the HP graphics plotter, and the HP Graphics Presentations/200 software. This versatile pack allows you to create — on acetate or paper — professional quality presentation materials that will impress your audience and help hold their attention. You'll want to use this pack for all your customer presentations, management meetings, sales meetings, management reports and much more.

HP Project Management/200 (HP 98817A)

One of the most important phases of any project is the planning and organization of many interrelated activities. Network analysis is the method

most often used to plan project management. Besides helping formulate the basic plan, network analysis permits following the project closely, anticipating problem areas, evaluating alternate plans, and achieving the economic and timing objectives of the project. The HP Project Management/200 software incorporates these network methods: PERT — Program Evaluation and Review Technique; CPM — Critical Path Method; MPM — Metra Potential Method; and GANTT Chart — Graphic presentation of the results of network calculations.

Technical Documentation



HP TechWriter (HP 98819A)†

HP TechWriter is a low-cost document editor for the Series 200 that eliminates the need for technical professionals to manually "cut and paste" pictures into memos and documents. Using HP TechWriter will save you many critical hours when you need to document your software and engineering tasks.

One of the key features of HP TechWriter is its ability to accept pictures from any graphics program capable of producing plot files. With HP TechWriter you can reference plot files from a document, view both text and pictures on a screen as they should appear in the document, and produce a printed copy of the document.

When you need to include pictures in your reports, take advantage of HP's graphics software — HP EGS/200, HP Statistics Library/200, HP Project Management/200, and HP Graphics Presentations/200. And then combine the pictures with your words for a total document editing solution.

† Will not run on Model 237.

Order Today

To order these software products (except HP EGS/200) in the U.S., call toll-free 800-538-8787; in California, Alaska, and Hawaii, call collect 408-738-4133. To order HP EGS/200, if you are outside the U.S., or for more information, contact your local HP sales representative.